

Talk about
good coffee!

Miss Muggins
Coffee and
Fresh Donuts



CHAPLEAU EXPRESS

Vol. 9, Issue 12, November 21, 2004

PIZZA HUT & KFC
There's a Reason
We're Number 1
864-0911



Community compost site being considered Many benefits says proponent of idea

By Jim Prince

A proposal to generate compost from municipal waste is being considered by the Township of Chapleau.

In submitting her proposal for a community compost site, Mary Lynne Ivey, who operates the firm Aboveground Gardening, said it's an idea which would benefit the community at little or no cost. Ivey pointed out she has conducted thorough research in the composting process and similar community projects.

The total cost for the initial year of operation, if approved by the council are estimated at \$1,050.00. Costs would be reduced in future years and the

sale of compost could even cover the cost of the operation.

In a brief to council before it referred the proposal to its public works committee, Ivey outlined a number of benefits resulting from a community compost site.

The dual aim of the project is to provide an affordable source of high quality sterile compost for use on municipal, commercial, and private properties, while reducing wastage of recyclable materials in the landfill.

It would divert compostable materials from the existing landfill site and provide free, a



sustainable source of sterile compost for use by the municipality. It would also promote an environmentally responsible attitude in the community and encourage improvement of local properties.

"Because most of the soil in our area is sandy and of poor nutrient value, a local source of compost available in bulk would be well received," said Ivey in a letter to council. "The

benefits of the proposed compost site would soon outweigh the small initial investment of time and money," she adds.

While there are some gardeners in Chapleau already using small compost bins which can be purchased at the Township offices, they can be ineffective in the area's cold climate.

However, Ivey said a small community can provide enough material to maintain a compost site that would remain active year round, producing mature compost within one year.

The Public Works Committee is expected to consider the proposal this week.



Graffiti vandalism causes concern

By Jim Prince

It defaces public property, embarrasses persons who can't avoid seeing it, and it's frustrating for municipal officials who have to send out crews to clean it up.

And once more, vandals, sometime last week, scribbled graffiti on the walls of the railway overpass.

It's just the latest incident in a series which have left many public properties damaged with the graffiti, which sometimes is very rude and offensive.

"Frustrated," said Mayor Earle J. Freeborn when asked about the latest incident. "You just can't get the message to them. They are destroying their own property, which is property their parents have paid their share towards."

The Ontario Provincial Police in Chapleau have been notified and are continuing their investigation.

Four legged vandals hit Peace Park



By Jim Prince

They may be an icon of Canadian history and the reason for bringing the early traders to this area, but now many have opposite views on their usefulness.

Beavers have proliferated so successfully, they are causing damage and distress to anyone with property near water. The latest invasion has left its scars on the Peace Park, one of this

community's beauty spots along the back river.

Louis Dubé has spent countless volunteer hours providing residents and visitors landscaping the area with flowering gardens and shrubs, but now the beavers are slowly working to destroy a thicket of aspen, their favourite food.

After the problem was brought to Township Council by

Deputy Mayor Bud Swanson, the Township's Leisure and Culture Services workers have wrapped some of the trees with wire mesh in hopes of discouraging the four legged vandals.

The Beavers may be the reason for another visitor attraction, the Chapleau Crown Game Preserve where they remain protected under the original intent of the Preserve which promoters here hope will serve to attract tourists from all parts of the world, but in the meantime residents wish the pesky animals would leave some trees at the Peace Park standing. The move by the Township hopes to put an end to the destruction.

New funding for local infrastructure to be studied How much left in the pot for small communities

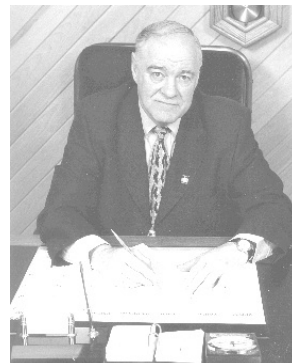
By Jim Prince

Chapleau officials will wait and see the fine print before getting their hopes too high on the announcement last week the senior levels of government have put \$596 million into a program for infrastructure projects.

The money, in the form of low interest rate loans, are designated under the Canada-Ontario Municipal Rural Infrastructure Fund and will be available to municipalities of 250,000 people or less.

Mayor Earle J. Freeborn who said Chapleau is looking at an application, noted there has been no word on just how the money

will be doled out. Noting the population criteria of 250,000 residents, Mayor Freeborn said that's almost every municipality in Ontario except Toronto. "We're hoping it's not a per



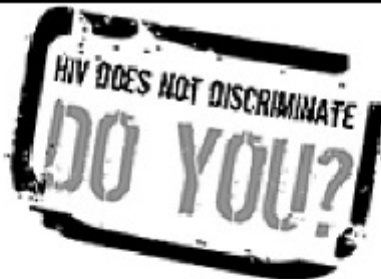
capita fund," he said.

Chapleau is anticipating such funding would go towards its share of a \$3 million program it envisages to improve

local infrastructure. The municipality would proceed under terms of the Ontario Strategic Infrastructure Financing Authority (OSIFA).

Chapleau has already been told it qualifies to be eligible for low-cost longer term loans under OSIFA.

The local program would include infrastructure upgrading along Maple, King, Queen, Devonshire and Elgin Streets, the Water Plant Road and Aberdeen Street. The largest single work under the proposal is improvements to the Monk Street Bridge, the railroad over pass, and its approaches.




**HIV is caused by a virus.
Discrimination is caused by
fear and ignorance.**

Both can kill.

Contact the Sudbury & District Health Unit
for services and information.

(705) 864-1610
www.sdh.u.com



**Dr. L. R. Simpson
VETERINARIAN**

Will be at the Moose Hall
Monday, November 29, 2004
FOR APPOINTMENTS CALL
Nadene McEachren at 864-1055

The Chapleau Express is published every Sunday.
Box 457
Chapleau (Ont.)
P0M 1K0

Telephone - Fax : 705-864-2579
e-mail : jprince@ontera.net

Deadline for receiving ads is Wednesday at 4 p.m.

The Chapleau Express is delivered free of charge to every household each Sunday. If you have any comments, please feel free to contact us.
Canadian Publications Products Sales Agreement #130183799


**CHAPLEAU REAL ESTATE
LIMITED** BROKER



125 Mill Road
Acreage, acreage, acreage! 2000+ square feet of potential sited on 50+ acres. Three bedroom log faced bungalow with 1 car attached garage, built-in refrigerator, stove and Jenn-Air stove top. New great price!
\$105,900.00



103 Pine Street West
3 unit apartment building sited on a 60' x 50' lot. Two one bedroom units and One three bedroom unit. Potential Gross Income of \$15,900 per year. Live in one unit and let the other two units pay all expenses.
\$53,900.00



89 Monk Street
Large, semi-detached home with 1618 square feet of living space, 3 bedrooms, dining room, new rear porch, newer shingles, new furnace & oil tank in 2003. Own for less than \$400.00/month Principal Interest & Taxes. Call us for your private viewing today!
\$59,900.00



109 Queen Street South
Three bedroom, brick faced, back split. Oversized oak kitchen with open concept dining room. Large rec room in basement and abundance of storage space. Four & two piece bath. 24' x 18' detached garage, covered carport, with concrete driveway.
\$89,900.00

To View More of Our Exclusive Listings
Visit our display window at 106 Birch Street or log on to
chapleurealestate.com

Dean J. Landry, Broker **Lisa A. Landry, Sales**
Phone: 864-1115

Peer Pressure, It's an uphill battle

By Brian Edwards

What is peer pressure? When our friends or the group we hang with begins to force their views and decisions on us, that's peer pressure. When it comes to using drugs, we have a lot of influences to contend with. Movies, music, popular sport figures and companies who spend billions of dollars each year promoting their substances (remember, alcohol and tobacco are drugs too) can be difficult to resist. Add all of this to our friends trying to entice us and we are faced with an

uphill battle, but we are not defenseless.

What can we do?

- By being secure in the knowledge that we know who we are and can make up our own minds, we empower ourselves to address the pressures we may be faced with. How do we do this?
- Choose your friends wisely and surround yourself with people who have made the same decisions as you and choose not to use drugs. The old adage of strength in numbers is of a benefit to you in this situation.
- Decide in advance, how you will handle

yourself in a situation that involves being pressured to use drugs. Mentally play out the scene then stick to your choice should the situation come up. Being prepared before hand will make it easier to stand your ground.

- Avoid places where you know drugs will be present. This may mean not going to certain parties or homes.
- Get help from a trusted adult or older peer to gain more information about how to resist using drugs.

Many people will do or participate in activities such as using drugs against their better judgment in order to fit in with a certain social group.

By gaining knowledge about drugs and different ways to resist using drugs, a person can be confident that they have decided to make decisions based on what is best for them, not their friends. Real friends won't hassle or pressure you to do something you don't want to do. Real friends will respect and support your decisions.

For more information regarding drugs and peer pressure please contact Brian Edwards, Substance Abuse Counsellor, at the Turning Point Clinic at 864-1919 or come to the clinic located at 8 Lorne Street South, Chapleau. All inquiries are confidential.

**CHAPLEAU CHILD CARE CENTRE
DE GARDE D'ENFANTS**



**ANNUAL CHRISTMAS SHOPPING PARTY
FÊTE ANNUELLE DE COURSES DE NOËL**

Sunday, November 28 from 1:00 to 4:00 p.m.
Le samedi, 28 novembre de 13h00 à 16h00

Silent Auction, Craft Tables,
Bake Sale, Touch & Take and so much more....


Vente aux enchères silencieuse, table d'artisans, vente de pâtisseries, table "touche et emporte" et beaucoup d'autres activités.....

PLAN TO ATTEND!! / PLANIFIEZ DE VOUS Y RENDRE!!

LETTERS TO THE EDITOR

To the editor,

Sunday morning, I took my big plastic snowman out, as I had him in the cellar all summer. Monday, I went out to see him. He was gone. I ask the culprit to please bring him back to me. A reward if you know who took him. Please call 864-0673 or bring it to 12 Lorne South. Thank you for your assistance.



Beatrice Morin

**NORTH WEST TRANSPORT INC.
TRANSPORT NORD-OUEST INC.**

MINE SERVICE & TRANSPORTATION
TRANSPORT DE MINÉRAI



CHAUFFEUR(E) DE CAMION-REMORQUE

Transport Nord-Ouest est actuellement à la recherche de plusieurs chauffeurs(es) de camion-remorque pour sa succursale à Timmins, Ontario, afin de combler les besoins d'un contrat de transport d'une durée minimum de 7 ans.

Qualifications:

- Expérience minimum de 3 ans comme chauffeur avec permis Classe 1 Québec (ou Classe A, Ontario)
- Bon dossier de conduite (dossier de conduite à fournir)
- Prêt à s'établir à Timmins
- Connaissance de l'anglais parlé serait un atout, mais pas obligatoire.

CHEF MÉCANICIEN

Qualifications:

- Expérience minimum de 5 ans comme mécanicien
- Bilingue.

Les positions sont ouvertes également aux femmes et aux hommes.

Les personnes intéressées doivent faire parvenir leur c.v. ou demande d'emploi (avec record de conduite) à :

North West Transport inc./Transport Nord-Ouest inc.
Télécopieur : 705-235-3327
Téléphone : 705-235-2828

**Chapleau Midget
Hockey Schedule**

The games here in Town are as follow:

Sunday November, 21st, 2004 @ 9:00a.m.

Saturday December, 4th, 2004 @ 2:00p.m. vs Wawa Travellers (Exhibition game) \$2.00 fee

Saturday December, 18th, 2004 @ 4:00p.m. vs Timmins Pizza Preditors

Sunday December, 19th, 2004 @ 9:00a.m.

Saturday January 8th, 2005 @ 4:00p.m. vs Kirkland Lake

Sunday January 9th, 2005 @ 9:00a.m.

Saturday February 12th, 2005 @ 4:00p.m. vs Hearst

Sunday February 13th, 2005 @ 9:00a.m.

Chapleau was granted the Grand Finale for the N.E.O.H.A. - The week-end of February 26th, 2005.



**12ième édition
12th Annual
Bal des chasseurs
Hunters' Ball**

**samedi 27 novembre
Saturday, November 27th
Moose Hall - 8:00 p.m.**

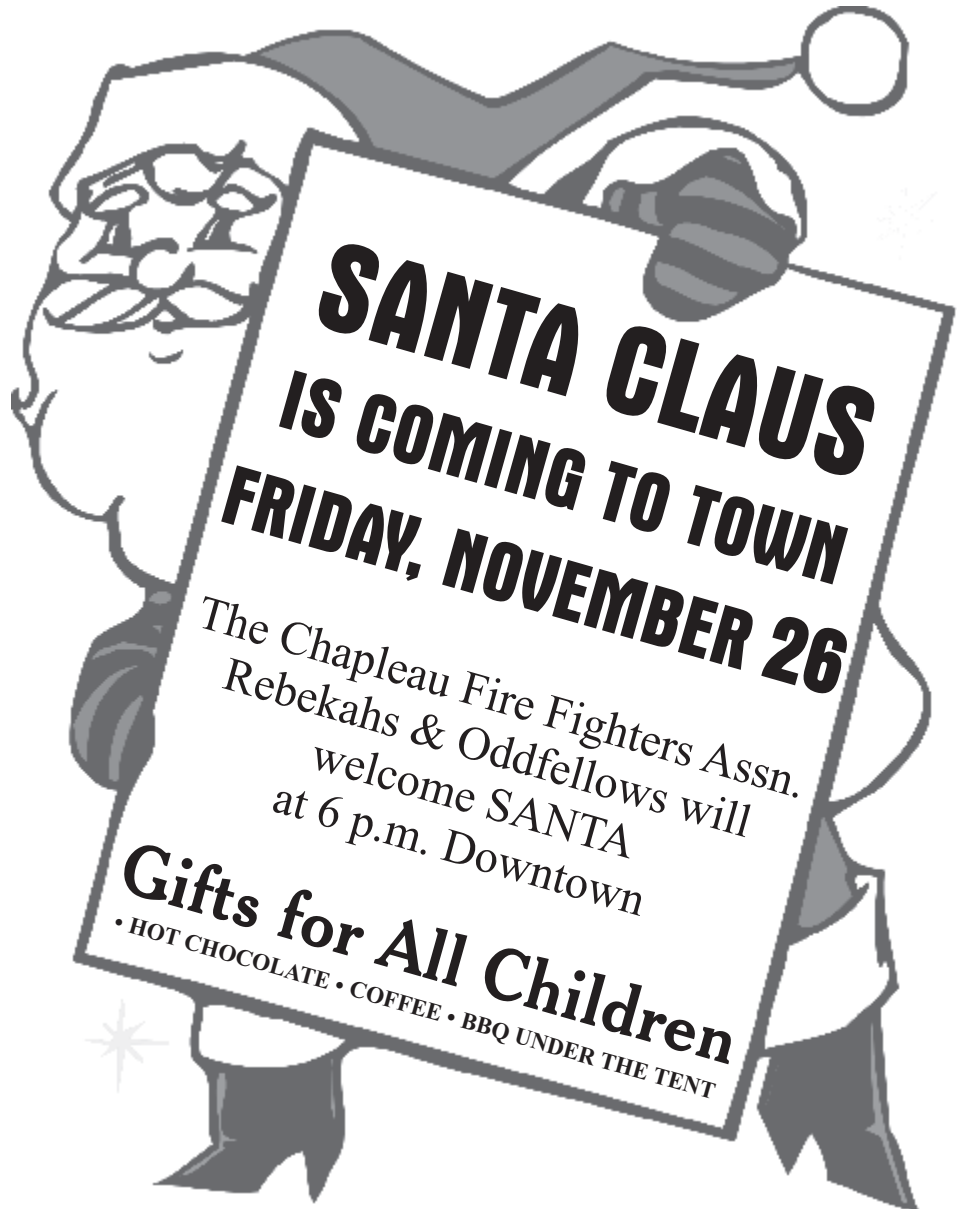
**Membre-\$6.00 Non member-\$8.00
GRATUIT AUX PARTICIPANTS DU CONCOURS
FREE TO THE MOOSE CONTEST PARTICIPANTS**

**Billet à l'avance au Centre
Advance ticket at the Centre**

**Musique avec/Music by Gabe Taylor
Buffet**

Prix à gagner et du plaisir à volonté!
Lots of prizes to win and lots of fun!

**Présenté par / presented by
Centre culturel Louis-Hémon
864-1126**



**SANTA CLAUS
IS COMING TO TOWN
FRIDAY, NOVEMBER 26**
The Chapleau Fire Fighters Assn.
Rebekahs & Oddfellows will
welcome SANTA
at 6 p.m. Downtown
Gifts for All Children
• HOT CHOCOLATE • COFFEE • BBQ UNDER THE TENT

SENIOR CHRISTMAS TEA

Saturday, December 4
2 - 4 p.m.
Cedar Groves Lodge
Baking and Crafts
Admission \$2.00

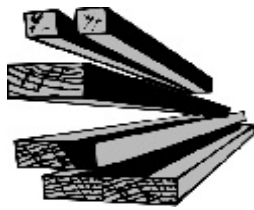
**For a wedding
announcement,
birthday wish,
graduation...
Call Diane 864-1126,
or drop it off at the
Cultural Centre.**



**Start Thinking
About Winter
Renovations
Projects NOW!**

Renovations • Rec. Rooms
All Flooring • All Painting

Only qualified workers
on the job sites



All the protection you
as a customer need

**Leo Santerre & Son Construction
864-1071**



Collins Art Gallery
(69 Birch St)

and
the Coin du livre
(40 Birch St - basement of post office)

welcome you to
Xmas Wonderland

On Friday, November 26, from 7 to 9 p.m.

Come and browse at the Art Gallery. Find
beautiful crafts & much more... And
browse at the Coin du livre with a huge
selection of books, dictionaries and videos.

Refreshments will be served
at both locations!



Nouvelles de l'ergothérapeute de Chapleau



Par Dean Arnold

J'espère que vous avez tous passé une merveilleuse Action de grâces. Ma famille et moi avons passé la fin de semaine à Espanola avec des membres de la famille. Nous sommes heureux d'être de retour au Canada et de pouvoir passer les fêtes avec nos êtres chers.

Nous avons bien hâte à Noël. Il est parfois difficile de choisir un cadeau pour vos personnes âgées préférées. Elles disent souvent qu'elles n'ont besoin de rien ou elles vivent maintenant en appartement et ne souhaitent pas accumuler d'autres objets.

Voici quelques idées de cadeaux suggérés par des ergothérapeutes qui peuvent être utiles à votre être cher au cours de ses activités quotidiennes.

Lumière de nuit s'activant au moyen d'un détecteur de mouvement: Très utile pour prévenir les chutes des personnes qui se lèvent la nuit et qui n'aiment pas dormir avec une source de lumière quelconque.

Le protecteur de hanche Safehip, un nouveau produit sur le marché, peut réduire les risques de fractures de la hanche lors d'une chute. Fait de coton, de lycra et de coquilles internes rembourrées, ce sous-

vêtement (ou culotte) se dissimule sous les vêtements.

Adaptations pour le téléphone: Le photophone Ameriphone permet d'insérer sur le téléphone neuf photos de membres de la famille et d'amis. Les numéros de téléphone sont programmés et l'utilisateur n'a qu'à appuyer sur la photo de la personne à qui il souhaite téléphoner. Voilà une bonne solution pour les personnes ayant des problèmes de mémoire, des troubles visuels ou des problèmes de motricité fine. Communiquez avec Hall Telecommunications au 1 (800) 265-2667.

Un amplificateur pour téléphone portatif, facile à mettre ou à enlever, aidera l'utilisateur à entendre son interlocuteur.

Les côtés de lit pouvant être ajoutés à presque tous les types de lits comportent un levier qui glisse sous le matelas. Ils sont très pratiques pour les personnes qui ont

de la difficulté à s'étendre dans le lit ou à sortir du lit.

Aides techniques pour le bain: Les éponges à manche long sont très utiles pour prendre un bain ou une douche. Elles coûtent aussi peu que 15 \$ et permettent d'atteindre plus facilement le dos et les pieds. Des barres d'appui convenablement installées sur le mur de la douche aideront la personne à entrer et à sortir de la baignoire et permettront de réduire les chutes.

Pics à glace pour les cannes: Pratiques lorsque les routes et les trottoirs sont glacés et glissants, les pics à glace s'attachent tout simplement à la canne et se trouvent dans la plupart des pharmacies où l'on vend des cannes.

Accessoires pour la marchette: Pour quelques dollars, vous pouvez acheter un porte-tasse qui s'adapte à la marchette et qui permet à la personne de transporter une boisson pendant qu'elle se déplace avec sa marchette. Optez pour les

porte-tasses qui se fixent solidement sur la marchette. Un sac fourre-tout ou un sac à provisions est très pratique pour transporter des livres, des lunettes, etc.

Dispositif d'alerte pour la cuisinière: Même s'il faut faire appel à un électricien pour l'installer, ce dispositif peut valoir la peine pour une personne ayant des troubles de mémoire. Ce gadget sonne automatiquement lorsqu'on allume le four ou les feux de cuisson et continue d'émettre une sonnerie à intervalles réguliers jusqu'à ce qu'on éteigne le four ou les feux. Un micro-ondes muni de cadrans faciles à lire peut permettre de réchauffer la nourriture en toute sécurité.

Un livre de recettes se préparant dans un seul plat et pouvant se cuisiner au micro-ondes. Optez pour les livres à gros caractères, dont le langage est simple.

Des ustensiles de cuisine à gros manches

sont disponibles dans tous les magasins à rayons. Les gros manches flexibles de ces ustensiles permettent de peler les légumes, de trancher le fromage et même de presser des citrons plus facilement.

Une sacoche de ceinture ou un sac à dos laissent les bras libres lorsqu'on magasine.

Un oreiller moulé pour le cou permet à la personne de dormir dans une position qui prévient les maux de cou. Un tel oreiller peut améliorer le sommeil et réduire la douleur au cou pendant le jour des personnes qui souffrent d'arthrite.

Je suis très heureux d'avoir l'occasion de travailler avec les gens de Chapleau. Si vous avez des questions au sujet de l'ergothérapie, n'hésitez pas à m'appeler au 864-3078. Mon prochain article portera sur les modifications du domicile en vue d'améliorer la sécurité.

Sans emploi? Destination carrières est prêt à vous aider.

- Consultation individuelle
- Testage
- Appui à la recherche d'emploi

Financé par **Canada**

destination ► carrières
services d'emploi



career link ► centre
employment services

- Programmes de retour à l'emploi
- Ateliers

■■■■► **Résultats**

À Chapleau, composez le 1-800-361-6673 poste 4010 pour faire un rendez-vous.

Are you unemployed? Career Link Centre can help you.

- One on one career counselling
- Testing
- Job search support

Funded by **Canada**

destination ► carrières
services d'emploi



career link ► centre
employment services

- Return to work programs
- Workshops

■■■■► **Results**

To schedule an appointment in Chapleau, please call 1-800-361-6673 ext 4010

It has sometimes been the custom for a newspaper or a magazine to present a story in serial form, similar to television mini-series. Therefore we are introducing this story, the work of a Northern Ontario author, whose pen-name is L. Martin. The story relates to our area. Enjoy.

NO, NO, NOT THE BUSH!

Chapter Seven

While foraging for food in the bush, Marc and Julie have been interrupted by bears.

The two cousins looked wildly around for any sign of the mother bear. They headed toward a screen of alder bushes, hoping they could slip through and remain unseen. But the bushes began to rustle as they approached. Loud whuffing and snapping sounds came from something hidden among them.

"Oops! Not that way, I think," said Julie, swiftly turning in another direction, "That's Mama!"

"Should we climb a tree?" asked Marc.

"She can climb faster," replied Julie. "Let's just walk away, and keep talking loudly. Then she'll know we're leaving." Moving at a pace just short of panic, the two worked their way through the undergrowth. Julie kept up a constant stream of talk, about bear behaviour, the threat display they had just heard, and the fact that the greatest threat to bear cubs was adult male bears.

"Fascinating!" replied Marc breathlessly. Inside he was wondering whether his hair was actually standing on end. It certainly felt that way. They plowed on through the bush for a seemingly endless time. Finally Julie slowed down and stopped.

"I guess we're okay now," she sighed. "Mama's not coming after us. Let's eat!" The cattail

roots were a little fuzzy from being in her pocket but the youngsters wolfed them down gratefully. Afterward they considered their next move. Where were they in relation to the road? Both had a feeling it lay to their right. Now that the sky had cleared they knew that meant South. Keeping the morning sun on their left, they travelled on for about half an hour. A glimpse of sky between tree trunks ahead hinted at a clearing. Pushing through a particularly thick clump of spruces, Julie and Marc stepped out onto a road. It was extremely narrow, just two ruts through crushed vegetation. They wondered whether this was the road their kidnappers had brought them in on. There were no tire tracks visible.

"That could be because of the rain the night we came," mused Marc. "Now the question is which way to turn. That way," he said, pointing right, "probably leads to the cabin. Unless we have wandered in a really big circle..."

"Then let's try going left," replied Julie. "It will feel so good not to have to break trail through the bush!" As they walked, they searched for any sign of tire tracks. There were none. There were, however, many moose tracks, and large dog-like prints that Julie said were made by wolves. The road was almost overgrown in places by raspberry or alder bushes. "I'll bet that screeching sound when we drove in was made by branches like this scraping along the sides of the van." At one point they found a culvert with a tiny stream

trickling through it. Refreshed by a drink, they plodded on.

"Look! Another road!" Marc said, pointing ahead. They had arrived at a wider road, sandy-surfaced. "Maybe there will be traffic, or signs!"

"Or maybe not," sighed Julie wearily. "There are hundreds of abandoned roads in the bush." She examined the angle at which the tiny, rutted track joined the larger road. Drawing a diagram in the sand, she explained to Marc how it is sometimes possible to tell directions on a bush road which way leads back to a major road or highway, and which leads further into the bush. "We'll turn left again," she decided. "If we find another little road turning off this one at the same angle, we'll know for sure we're headed back toward a main road." After twenty minutes or so, they came to another overgrown track, turning off just the way Julie had predicted. Marc was impressed.

"Where did you learn all this bush stuff?" he asked.

"From my Dad," she answered, "and from Uncle Rob." Marc fell silent for a while as they walked on.

"I never went out on a bush trip with Rob," he said finally. "I never even asked him about his prospecting work."

"Why do you call him Rob?" asked Julie shyly. "Why not 'Dad'?"

"I dunno," mumbled Marc. "My own father died when I was a baby so it's not like I'd be insulting his memory. I guess it's because I've always felt like a fifth

wheel."

"What do you mean?" asked his cousin. "What's a fifth wheel?"

"Something you don't need," Marc answered bitterly. "He fell in love with my Mom, so he married her and had to take me as well. Then she died less than two years later. Now he's stuck with me and we're still practically strangers!"

"Well," said Julie kindly, "That's something you can work on when you get back home."

"That's IF we get " began Marc. Julie interrupted him.

"You're doing it again! Being negative! Just " She turned around suddenly. "What's that sound? It's a car! We'll flag it down!" she cried excitedly.

"Quiet!" hissed Marc, as he froze in place for an instant, listening. Seizing Julie, he bundled her off the road and into the bushes. "Get down!" he ordered, pushing her head and shoulders downward. "I recognize the sound of that engine!" They flattened themselves beneath some drooping spruce branches. The vehicle, approaching slowly, was hidden by a curve in the road. Julie and Marc held their breath.

The white van appeared. Baldy was driving. Blue-Eyes, in the passenger seat, held a pair of binoculars. The van crept past at a walking speed, both men leaning out the windows, watching for their prey.

...*TO BE CONTINUED*



Royal Canadian Legion
Harry Searle Branch No. 5
Chapleau, Ontario

The Royal Canadian Legion would like to thank everyone who purchased wreaths and poppies for the November 11, 2004 ceremonies at the Cenotaph.

Our apologies to those who may have been missed.

We would like to thank Cassandra Demers, and Vincent Ladouceur for their excellent reciting of "In Flanders Field" by John McCrea, and thank you to Daniel Lee for the playing of "The Last Post".

Also, a big thank you to all the volunteers who worked so hard in honour of our Veterans.

**FLU SHOT CLINICS
Dr. Shapiro's Office**

**18 Birch Street
(Rear Entrance)**

**Monday, November 24, 2004
3:30 p.m. To 5:30 p.m.**

**No appointments
required. You must
provide a current and
valid health card number.**

**ABOVEGROUND
GARDENING**

**For all your gardening
and landscaping needs**

**Call Mary Lynne Ivey
864-0909**



**NEW AT THE
CHAPLEAU PUBLIC LIBRARY**

The Cripple and His Talismans - Anosh Irani
The Nine Planets - Edward Riche
The Society - Michael Palmer
Bait - Karen Robards
Dune: The Battle of Corrin - Brian Herbert
White Hot - Sandra Brown

Help us, Help heal Aidez-nous à aider les autres



Please give generously
to your hospital this
holiday season.



Nous vous demandons
de donner
généreusement à
votre hôpital en cette
période des fêtes.

**CMHA Bingo held every
Sunday night starting
with the Early Birds at
6:45 p.m.
New Bigger Jackpot - full
card \$800.00
guaranteed
Free draws every week
from now until
Christmas**

FOR RENT

**Newly Renovated 3 Bedroom
Home (Very Clean)**

Garage, fenced-in yard,
downtown area, close to schools,
\$600/month + utilities
Available as of December 1st
Call 864-1071 after 4 p.m.

Collins Art Gallery showcasing a family art exhibition



By Jim Prince

A show of
paintings by a family
with connections to
Chapleau is winding
down.

Judging by
comments in the guest
book at the Louis

Hénon Culturel
Centre, Collins Art
Gallery, local residents
have been impressed
by the works of the
Riopel family.

Of 13 family
members 7 are artists
and while most
produce oil paintings,
some work in acrylics
and there is also a
sculptor.

Doris met her
husband Guy in
Quebec, and followed
him to Chapleau where
he was employed for
38 years at the J.E.
Martel lumber mill as a
saw filer.

Doris is the
lone weaver in the
family. She is well
known in the Chapleau
community for her
various creations.

Let Us Know How Tembec Is Doing on the Superior Forest

The SmartWood Program of the Rainforest Alliance will conduct a forest management assessment of the Tembec forestry operations on the Superior Forest in the Chapleau area in December of 2004.

From December 6-10, 2004, four third-party auditors from the SmartWood Program of the Rainforest Alliance will be on-site at the Superior Forest to evaluate Tembec's forest management practices relative to the Forest Stewardship Council (FSC) National Boreal Standard. Your input is welcome through the entire assessment period from November 6, 2004 to January 13, 2005.

FSC is an international organization created in 1993 by representatives from environmental and social groups, Aboriginal organizations, industry, and certification bodies from around the world. Certification allows companies to demonstrate their compliance to FSC's strict principles for responsible forest management which include: environmental protection, Aboriginal rights, forest management planning, community development and employee relations.

Public input is an important part of this certification process. Individuals and organizations can provide comment about Tembec's forest management practices by:

- **Providing comments** about operations on the Superior Forest to SmartWood Assessment Team leader Nick Baggs, by e-mail to nbaggs@sympatico.ca, by fax to (613) 634-9775, or by phone at (613) 634-9002; or
- **Talking or meeting with the assessors** during the audit period to provide information. This can be arranged by contacting Riki Burkhardt, team member by e-mail at rburkhardt@sympatico.ca or by phone at 416-203-6286.

For more information on the National Boreal Standard for Canada see the FSC Canada website at www.fsccanada.org

Further information about SmartWood can be obtained at www.smartwood.org or by contacting Richard Donovan at 802-434-5491 or by e-mail at rzd@smartwood.org.



KENWORTH

Heavy Duty Mechanic Required

Timmins Kenworth Ltd. is
looking for a Heavy Duty
Mechanic. Truck & Coach
license required. If interested,
please call Dwight Michaud at
268-7800 for an appointment.

FREE "Small Business Start-up Seminar"

November 22nd, 7:00 - 8:30PM
Aux Trois Moulins Motel Conference Room

To register call: 1-800-565-4507

www.ecssm.com



The flu shot. It's free. Now, it's easier.

We've all seen how serious infectious diseases can be. Getting your free flu shot is a good way to protect yourself, protect your family and protect the people around you. Many local pharmacies are making it easier for you to get your free flu shot by holding flu shot clinics. So get your shot while you shop.

Pharmacy Flu Shot Clinics Nov. 15 - 30

Call for a clinic near you.

1-866-FLU-'N-YOU TTY 1-800-387-5559 www.health.gov.on.ca

Let's Beat the Flu!

Protecting your health. 

Local High School Student Encourages Others



exceptionally well during his highschool career. This includes being representative, treasurer, and president of Student's Council, a member of the drama club for two years, a player for the highschool soccer team, and even being a part of the Math Club.

James has also made the honour roll

and has also kept his overall average between the 80s and 90s.

From July 4th to the 27th, this past summer, James went to the Shad Valley program in Ottawa to devote more time to learning new things.

During this time, his Shad Valley campus actually won

best overall and best business plan among other awards. James has been a great role model for students at Chapleau High School, and has proved that school is more than just work.

His advice to the students coming to highschool next year is to join as many extracurricular activi-

ties as possible and get involved in clubs at school to make the best of the time there.

Over the years, James has definitely accomplished a great deal. He has set many goals for the future and hopefully he will continue to set a good example for others to follow.

Ladies, Please read this Special Invitation

A Special Invitation

Two Special Nights At Chapleau Village Shops

Wednesday, Nov. 24th, 6:30 to 9:30

Chapleau Village Shops wants to pamper you for the evening.

*We are inviting the ladies of Chapleau to meet our Sears Beauty Advisors on Wednesday for a Free Make-over**

Everyone attending this Special Evening will get free Samples of Cosmetics/Fragrances.

Cosmetics and Fragrances will be available for purchase.

** Drop into The Village Shops on Monday Nov. 22nd to fill out a ballot to enter.*

10 entries will be picked and notified Monday evening.

Each of our Make-overs will receive a free gift.

There will be NO TAX on all Clothing, Gold & Silver Jewellery, Giftware, & Footwear. PLUS in store Specials throughout the store.

Hot apple cider & shortbread served, Bring the family

Friday, Nov. 26th, 6:30 to 8:30

Olde Fashioned Christmas

In store Specials - Hourly Specials - Prizes Spend the evening in Downtown Chapleau and Kick off the Christmas season with us.

To all our contestants in our Prize Contest.

Clip this Invitation and present it to the Contest Desk for 50,000 prize points each day, If you have not registered for our prizes, Please do so on these two evenings.

Chapleau Village Shops 8 Birch St. E., Chapleau

By Ashley Larocque

It has always been said that hard work and determination lead to great accomplishments. This definitely hold true to 17-year-old highschool student, James Petrosky.

James is the son of John and Cathy Petrosky and has lived here in Chapleau his entire life.

Since grade 9, James has been involved in numerous extracurricular activities and has done

CN and CPR announce new network

(CNW)- CN and CP Railway have reached agreement on three new network initiatives that will improve railway transit times and asset utilization in British Columbia, Alberta and Ontario.

The Ontario initiatives include the corridor between Waterfall, near Sudbury, and Parry Sound. The two railways will operate eastbound trains over the CN line and westbound trains over CPR's line, improving network fluidity in this corridor; a haulage arrangement, with CN freight moving over about 300 miles of CPR track in Ontario between Thunder Bay

and a junction with CN at Franz using CPR's route north of Lake Superior.

This arrangement will permit the rationalization of about 200 miles of CN secondary track in Ontario between Thunder Bay and Longlac. CN will maintain transportation service to affected shippers.

Robert Ritchie, CPR's president and chief executive officer, said: "These initiatives are the product of an extensive review that showed opportunities in eastern and western Canada for quick improvements in the utilization of railway infrastructure."

"COFFRE-FUN"

**J'APPRENDS
TOUT EN M'AMUSANT!**



Venez emprunter, *gratuitement*, pour trois semaines, une variété de jeux, de livres et d'activités à faire en famille! Le "coffre-fun" a été conçu pour des enfants âgés de 5 à 10 ans.

**Venez au 40, rue Birch E
(sous-sol du bureau de poste)
ou composez le 864-2763.**

Camille Robitaille Services

27 Beech Street, Chapleau,
864-0739

The season to go sledding is just around the corner!! And at Camille Robitaille Services, we have all the PARTS, OIL & accessories in stock to get you back on those trails! Hey SHOPPERS, check out these great GIFT IDEAS... CKX GLOVES, LEATHER MITTS, a HUGE SELECTION OF HELMETS, just to name a few. So come to the store where you always get MORE... MORE SERVICE, MORE SELECTION, MORE SATISFACTION!



The DOCTOR says: "Let's GO SLEDDING!!"

It's time to service your sled at the Doctor Over 25 years of experience

At Camille's, we have the largest inventory of genuine replacement parts to service your snowblower. We are your local authorized dealer for SERVICE & WARRANTY... MTD, Noma-Murray, SEARS, Briggs & Stratton, and Tecumseh.



Caper & Son Plumbing & Heating

Has moved to 41 Elgin Street. We are sorry for any inconvenience or confusion this may have caused.

We are still going strong with our own line of home heating products. Includes furnaces, fire places, boilers and electric forced air units. Caper & Son is a proud sponsor of Chapleau and its great people.

For all your home renovations & repairs, call
864-1825

Galerie d'art Collins
(69, rue Birch)
et
le Coin du livre
(40, rue Birch - sous-sol du bureau de poste)

vous souhaitez la bienvenue au
Noël de rêves
ce vendredi 26 novembre : 19h-21h.

Venez admirer le bel artisanat et autres à notre Galerie d'art et venez découvrir, au Coin du livre, la nouvelle sélection de livres, vidéos, jeux...

Nous servirons du café et du chocolat chaud aux deux endroits.

Formation Plus

Chapleau High School Annual Tree of Lights

The Chapleau High School Students' Council will be having a Christmas "Tree of Lights." This tree will give everyone an opportunity to remember their loved ones (deceased and living) as well as friends and family members in a special way during this Christmas season.

This 2004 tree is being donated by Students' Council in honour of and in memory of war veterans. This tree will act as a symbol of unity between Chapleau High School and the community it supports, wishing everyone Christmas peace, joy, and lasting happiness. The proceeds will be split between the CHS Students' Council and Chapleau General Hospital Courtyard Project at the local hospital. Lights may be purchased for \$5.00 each from members of the Chapleau High School Students' Council.

All of the lights on the tree are new this year. Chapleau High School Students' Council would like to take this opportunity to thank Chapleau Public Utilities Corporation and the employees who helped us with the lights.

The entire tree will be lit on December 7, 2004 at 7:00 p.m. at the High School. Area residents are invited to join in the celebrations. Christmas carols will be sung and hot chocolate and cookies will be served.

Donation forms are available at CHS. You may also fill out the attached form and return it to Chapleau High School with your cash, cheque, or money order.

I, _____

Would like to purchase _____ bulb(s) at \$5.00 each in honour/memory of _____

Cash _____ Cheque _____ Money Order _____ for \$ _____ is enclosed.

Return to: C.H.S. "Tree of Lights" P.O. Box 880, Chapleau, ON P0M 1K0

For more information contact Chapleau High School at 864-1452.

Pimii Kamik Gas Bar & Gift Shop

Located on the Chapleau Cree First Nation

Beginning Monday September 12, our WINTER HOURS will be from 7a.m. - 9p.m., 7 days a week

Drop by and check out our line of Authentic Native Crafts, Unique Gift Ideas, Jewellery, and Gift Certificates TOO!

We also carry road trip snacks, which includes Subs, Chips, Pop, plus a whole lot more.

Your Propane Refilling Station

FREE SMALL BUSINESS START-UP SEMINAR

Are you interested in opening a small business? Enterprise Centre Sault Ste. Marie and the Superior East Community Futures Development Corporation are pleased to offer a free Business Start-Up Seminar, Monday, November 22, 2004, 7:00 p.m. - 8:30 p.m., Aux Trois Moulins Motel Conference Room.

The seminar is an opportunity to learn about the steps required to start a business, the attributes of successful business people, the importance of business

planning, as well as financial considerations.

Jennifer Dimma, Small Business Advisor for Enterprise Centre Sault Ste. Marie states "this is an excellent seminar for those looking to start a business, but are unsure of the steps involved or those who have general start-up questions".

Enterprise Centre Sault Ste. Marie, the small business arm of the SSMEDC, is responsible for providing support to entrepreneurs across the Algoma District by offering free services,

programs, and informational resources. ECSSM is funded through the Province, Municipality and other private partners, and is one of 44 Enterprise Centres in Ontario.

For additional information about the programs and services offered by Enterprise Centre Sault Ste. Marie please visit our website www.ecssm.com.

To register contact the Enterprise Centre at 1-800-565-4507.

News from Chapleau's Occupational Therapist

Have a Safe and Warm Winter



By Dean Arnold

The kids in the neighbourhood were out in full force this week, getting together with the other kids and enjoying the new fallen snow. They were a little more bundled up, but were outside enjoying the outdoors just the same.

Not so for some of our seniors in the community. Snow and ice pose some dangers as the risk of falls increases. Some of our residents are already looking forward to springtime where they will be able to enjoy the outdoors again.

Here are some tips that might make ventures outside a little safer and hopefully prevent falls and the injuries that go with them.

1. Obtain ice picks that fit on the bottom of canes. This will provide some stability in the snow and ice. Remember as you enter buildings and stores to flip back the pick. The picks can be slippery on hard floors.
2. Consider hip protectors. These are essentially underwear with padding over the hip bones to provide cushioning should you have a fall. They reduce the risk of a fractured hip.
3. Use ice-melt or salt at the entrance and sidewalks of your home. This will help keep ice and snow from accumulating on your walkways and is much safer than swinging a shovel.

And to the kids in the neighbourhood, take a few minutes between snowballs to clear your elderly neighbour's sidewalk and driveway. That good deed will hopefully be repaid when you grow old and wish you could be outside, bundled up, seeing your breath and having to move the net to let a car go by. Have a safe winter!

Please contact me at 864-3078 for information on obtaining the products above.

*Count on the
Chapleau Express.
864-2579*

★ ★ **THE BARGAIN! SHOP** ★ ★

MOONLIGHT MADNESS

...make a donation to the food bank

and get

10% OFF

your purchases

during our **MOONLIGHT MADNESS EVENT**

enter to win a

\$100 shopping spree!



CAREER FAIR

SALON DES CARRIÈRES

Looking for a job? Trying to choose a career?

The Chapleau Labour Adjustment Committee and the Far Northeast Training Board cordially invites all residents to a Career Fair.

Take this opportunity to introduce yourself to potential employers, meet local entrepreneurs, speak to representatives from educational institutions and employment services, learn about the skills required by the labor market and attend free related workshops. (résumé writing, job search techniques, preparing for an interview)

The Far Northeast Training Board will be showcasing, "Hats Off To Trades", a regional awareness campaign aimed at promoting the skilled trades.

Date: Tuesday, November 23rd
Time: 1-6 pm
Place: Chapleau High School

For further information, please call Joanne Mione at the Action Centre at 864-0178.

Êtes-vous à la quête d'emploi ou d'un choix de carrière?

Le Comité d'adaptation de la main d'œuvre de Chapleau et la Commission de Formation du Nord-Est vous invitent au Salon des carrières.

Prenez cette occasion pour vous présenter à d'éventuels employeurs, pour rencontrer des entrepreneurs et les représentants des organismes de formation et des services d'aide à l'emploi. Informez-vous sur les compétences et les exigences requises sur le marché du travail et assistez aux ateliers gratuits. (Le curriculum vitae, technique de recherche d'emploi et la préparation à l'entrevue)

La Commission de formation du nord-est fera la promotion de «Chapeau aux métiers», une campagne régionale ayant comme but la promotion des métiers spécialisés.

Date: le mardi 23 novembre 2004
Heure: 13 h à 18 h
Endroit: Chapleau High School

Pour plus amples renseignements, veuillez communiquer avec Joanne Mione au Centre d'action au 864-0178.

Here is the schedule for the presentations.

- 16h - 16:30h atelier - Curriculum vitae et lettre d'accompagnement efficaces (en français)
 - 5-5:30 pm presentation - Dynamite cover letter and resume (in English)
 - 16:30- 17h - atelier - techniques d'entrevue et recherche d'emploi (en français)
 - 5:30-6 pm - presentation- job search and interview techniques (English)
- The Opening Ceremony will be at 1:00 pm



- Education**
 - Canadore College (Apprenticeships and Aboriginal Unit)
 - Chapleau Learning Centre
 - Collège Boréal (Kap & Hearst campus)
 - Collège Boréal (Timmins campus) Programme d'Esthétique
 - Fifth Wheel Training Institute
 - Formation Plus
 - Northern College
 - Northern Academy of Transportation (Manitoulin Transport)
- Employment Services**
 - Career Link
 - Job Connect
 - Métis Employment and Training Services
 - SSM Enterprise Centre
- Health**
 - Chapleau Health Services/ Turning Point
 - Kathleen Johnston- Massage Therapy
 - Manitoulin Sudbury EMS (ambulance)
- Forestry Industry**
 - Domtar
 - Ministry of Natural Resources

- Railroad**
 - CPR
- Tourism**
 - Camille Robitaille Services/Four Seasons
 - Guiding
 - Kathy's Kitchen at the Golden Route
 - The Wilderness Group (Wilderness Helicopters, Wilderness GIS/Vegetation Management and Pest Control, Wilderness reforestation and Fire)
- Trades (apprenticeships)**
 - Chapleau Child Care Centre de Garde D'Enfants
 - D.A. Rioux Construction Electrical
- Other**
 - Canadian Armed Forces
 - Far Northeast Training Board
 - Ministry of Northern Development & Mines
 - OPP
 - Township of Chapleau



La Commission de formation du nord-est est subventionnée par Ressources humaines et développement des compétences Canada et le ministère de la Formation et des Collèges et Universités de l'Ontario.

Le Comité d'adaptation de la main-d'oeuvre est subventionné par le ministère de la Formation et des Collèges et Universités de l'Ontario et est parrainé localement par le canton de Chapleau.

The Far Northeast Training Board is funded by Human Resources Skills Development Canada and the Ontario Ministry of Training, Colleges and Universities.

The Chapleau Labour Adjustment Committee is funded by the Ontario Ministry of Training, Colleges and Universities and sponsored by the Township of Chapleau.

THE LOCAL MARKET PLACE

THE LOCAL MARKET PLACE

ALL ADS ARE ACCEPTED AT Louis-Hémond Cultural Centre (69 Birch Street)

DEADLINE FOR RECEIVING ADS IS WEDNESDAY 4:00 p.m.

CLASSIFIED ADVERTISING RATES Regular Classified Ads
 First 25 words or less \$6.00
 Each additional word \$0.15+GST

APART'S FOR RENT
 You need a decent apartment, with one or two bedrooms, semi-furnished or not, dryer and washer hook-up, outdoor balcony, storage shed, private parking. Central location. Call Quality Rental at 864-9075 J2+8-RA

HOUSE FOR Sale/Rent
 (32 Lansdowne Street S.)
 4 bedroom brick home, close to downtown. Call 864-1574 or 0290 D5

APARTMENT FOR RENT
 2 bedroom, fridge & stove. Winter plugin c/o laundry. Call 864-0138 AW

HOUSE FOR SALE
 2 bedroom house, finished basement, rear deck, wood-electric heating. Excellent condition. Overlooking River at 37 Grey St. South. Call 864-2433 or 864-1574. N21

FOR RENT
 1, 2 & 3 bedroom & bachelor apartments, fridge and stove inc., centrally located. Call 1148 or 2454 D26

FOR SALE
 2001 Yamaha 7005XR, 2,800 kms w/numerous accessories. \$6,000 or best offer. Call 864-1309 N21

FOR SALE
 1997 Ford Explorer XL, V6 4X4, 4-door, auto, air, cruise, P/W, P/L, \$7,700 cert. O.b.o. Call 864-1562 N21

HOUSE FOR SALE
 2 bedroom house, finished basement, rear deck, wood-electric heating. Excellent condition. Overlooking River at 37 Grey St. South. Call 864-2433 or 864-1574. N21

HOUSE FOR RENT
 5 bedrooms, oil heat, first & last month required. Call 864-2282 N28

HOUSE FOR RENT
 5 bedrooms, oil heat, first & last month required. Call 864-2282 N28

FOR SALE
 1996 Yamaha V-Max 600XT. Good running condition, asking \$2,500 or best offer. Call 864-2189 N28

FOR SALE
 1998 Ford Windstar Van with remote start, runs great, asking \$3,500 (as is). Call 864-2189 N28

FOR RENT
 Large 1 bedroom, large living room, large bathroom! Fridge and stove included. Parking space. Available immediately. To view, call 864-0677, if no answer please leave a message D12

HOUSE FOR SALE/RENT
 (37 King Street)
 4 bedroom duplex, newly renovated, 1 1/2 bath, fridge, stove, washer, dryer incl. Double garage. To view, call 864-0926 D05

FOR RENT
 Cozy 2 bedroom house, newly renovated, downtown location, W/D hookup. Call 864-2667

You can always count on our ADVERTISING to bring results.
jprince@ontera.net
864-2579

ALCOHOLICS ANONYMOUS
 Offers help to anyone who desires to stop drinking. Open discussion meetings: Wednesday 7:30 p.m. & Sunday 2:00 p.m. Trinity United Church basement. Telephone contacts: 864-2321 and 864-1827
 Ladies call 864-0138

ALCOOLQUES ANONYMES
 Offre de l'aide à celui ou celle qui désire arrêter de boire. Les rencontres ont lieu tous les mardi soirs à 19h (7:00 p.m.) Au sous-sol de l'église Sacré-Coeur. Téléphonez au 864-2786
 Les femmes 864-0138

Charette Cleaning Systems
 Ray will be in Chapleau the week of Nov. 29 - Dec. 3
 To book an appointment, please call 1-800-827-4490

Dr. Allan MacIvor OPTOMETRIST
 Chapleau Medical Clinic, Broomhead Rd.
Tuesday, November 23, 2004
 10:00 a.m. To 8:15 p.m.
 FOR APPOINTMENTS CALL
 Toll Free 1-800-461-2883
 CALL 864-2340

CHADWIC HOME, FAMILY RESOURCE CENTRE
 Offers shelter, emotional support, and information for women and their children who are in crisis situations. We have a Toll Free Crisis Line which is staffed 24 hours a day. We can arrange for free transportation to the Centre for women who live in the Algoma/Chapleau area. We also offer support to women who live in the communities of Chapleau, White River, Dubreuilville, and Hornepayne through our Outreach Program. Our Outreach Worker travels to those communities to meet with women who need emotional support as well as information about their rights and options. If you need to speak with the Outreach Worker when she is in your community, you can call the Centre at any time to set up an appointment. You do not need to be a resident of the Centre in order to use our services. If you need someone to talk to or if you just need someone to listen, call our Toll Free Crisis ligne at 1-800-461-2242 or you can drop in at the Centre. We are here for you.

FOR RENT
 1 Bedroom Apartment. Fridge & Stove included, laundry facilities, secured storage, parking & outdoor plug-in included. Utilities extra. Contact: Bertrand Apartments (705) 864-0230 D19

SLOMA CLEANERS
 Now in Chapleau on Tuesday & Thursday

BERRY'S FREIGHT SERVICES
 TIMMINS - CHAPLEAU - TIMMINS
 MONDAY TO FRIDAY
 1lb. to 10,000 lbs.
 FOR QUALITY SERVICES AT INEXPENSIVE PRICES GIVE US A CALL AT
 1-705-264-4334

LAMON MOTORS LIMITED
 24 HOUR TOWING
 CHEVROLET - OLDSMOBILE - PONTIAC - BUICK - GEO
TRAVIS GENDRON
 Sales Consultant
 P.O. Box 710 Wawa, Ontario P0S 1K0
 FAX: (705) 856-4290
 BUS: (705) 856-2394
 RES: (705) 856-1185

Northern Lights Ford Sales
 Andrew G. McKenzie
 11 Years of Service

 Highway 17, North
 P.O. Box 1033
 Wawa ON. P0S 1K0
 Bus: 705.856.2775
 Fax: 705.856.4862
sales@northernlightsford.ca

BRUNSWICK HOUSE RECREATION BINGO

EVERY THURSDAY
START TIME - 7:15 p.m.
 Under New Management

BINGO
 CENTRE CULTUREL LOUIS-HÉMON
 Where: **Loyal Order of the Moose**

SUPER JACKPOT CHAQUE MERCREDI à/at 7:15 P.M. EVERY WEDNESDAY

Super Jackpot in 58 numbers or less

101 GAS STATION & CONVENIENCE STORE
 OPEN 24 HOURS
 BRUNSWICK HOUSE FIRST NATION - HWY 101
 REGULAR & PREMIUM GAS
 DIESEL ALSO AT A LOWER PRICE
 WE SELL A VARIETY OF SNOWMOBILE PRODUCTS
 SPARK PLUGS - SNOWMOBILE OIL - OCTANE BOOST BELTS & ACCESSORIES
 AUTOMOBILE PRODUCTS
 MOTOR OIL - GAS LINE ANTIFREEZE & CONDITIONER - BRAKE FLUID - ANTIFREEZE - WINDSHIELD WASHER FLUID - ETC.
 NAME BRAND & NATIVE BRAND TOBACCO PRODUCTS
 CALL 864-0330

NEED APPLIANCE PARTS?
 We sell parts for all makes and models of Major Household Appliances.
 Free shipping on all parts orders over \$50.00 before taxes. (Within the Chapleau Area)
 We also provide service in Chapleau on a weekly basis.

CALL COLLINGS APPLIANCE SERVICE
 1-705-264-1708
 Or e-mail us at: lancec@ntl.sympatico.ca
FOR ALL YOUR APPLIANCE NEEDS

GOING TO CHURCH

Catholic Church SACRED-HEART OF JESUS PARISH PAROISSE SACRÉ-COEUR DE JÉSUS
 26 Lorne Street North -OFFICE-
 21 Lansdowne Street N. 864-0747
 Saturday/samedi 7 p.m. (Alternating French and English)
 Sunday/dimanche 10 a.m. (Alternating French and English)
 Fr. Gilles Grandmont

CHAPLEAU PENTECOSTAL CHURCH
 9 Elm Street (P.A.O.C.) 864-0828
 Sunday School 9:45 a.m.
 Sunday Services 11 a.m. & 7 p.m.
 Family Night (ages 1-109) Wednesday 7 - 8:15 p.m.
 Pastor Dan Lee

TRINITY UNITED CHURCH
 Corner of Beech and Lorne - 864-1221
 Sunday Worship 11 a.m.
 Sunday School Kindergarten to Grade 8
 Nursery
 Pastor Rolly MacLean

OUR LADY OF SEVEN SORROWS PARISH PAROISSE NOTRE-DAME-DES-SEPT-DOULEURS (Foleyet)
 Liturgy of the World Sundays 11 a.m.
 Liturgie de la Parole Dimanche 11h
 Mass every 4th Saturday at 7 p.m.
 Mess le 4e Samedi 19h

COMMUNITY BIBLE CHAPEL
 Corner of King and Maple 864-0470
 Communion Service 9:30
 Family Bible Hour 11 a.m.
 Including Sunday School Evening Bible Study and Ladies Bible Study during the week
 Transportation available
 Al Tremblay

ST. JEAN DE BRÉBEUF (Sultan)
 Liturgy of the Word Liturgie de la parole
 Sunday/dimanche 11 a.m.
 Bilingual Mass every 3rd Sunday of the month at Noon
 PERMANENT DEACON
 Mr. Ted Castilloux
 MANDATED
 Mrs. Marguerite Castilloux

Diocese of Moosonee Anglican Church of Canada
 ST. JOHN'S CHURCH
 4 Pine Street West 864-1604
 Sunday Service 10:30 a.m.
 Rev. Bruce Roberts

ST. MARY'S ANGLICAN CATHOLIC CHURCH
 78 Devonshire Street 864-0909
 Sunday Service 10 a.m.
 Rev. William P. Ivey

**BUY
FROM
THE**

BEST

Prices
Warranty
Selection
Financing
Service
Guarantee

BUY WITH CONFIDENCE

Over the years we have earned a reputation of looking after our customers. Remember, at Lawson Motors, used vehicles are not part of our business - IT IS our BUSINESS.

Two locations: BLIND RIVER and ELLIOT LAKE

<p>2002 SATURN VUE</p> <p>AWD, 4dr, Auto, Air, CD, 48k, Balance of Factory Warranty</p>  <p>\$17,900</p>	<p>2001 DODGE DAKOTA SLT</p> <p>Ext. Cab, 4X4, Loaded, V8, Auto, Tire Package, 61k, Tonneau Cover, Immaculate Shape, Balance of Factory Warranty</p>  <p>\$19,900</p>	<p>2001 GMC SIERRA SLE</p> <p>Ext. Cab, 4X4, V8, 4dr, Loaded, Certified With Warranty</p>  <p>\$18,500</p>	<p>2001 F150 XLT LARIAT</p> <p>Super Crew, 4X4, V8, Auto, 4dr, Loaded, Leather, Heated Seats, Must be seen, Certified With Warranty</p>  <p>\$23,700</p>
<p>1997 GMC SUBURBAN</p> <p>Extended, 4X4, V8, 5dr, Loaded, 8 Passenger, Front/Rear Heat, Spotless, Certified With Warranty</p>  <p>\$12,900</p>	<p>2001 DODGE CARAVAN SE</p> <p>V6, 4dr, Loaded, 54k, Balance of Factory Warranty</p>  <p>\$11,900 \$279/mo</p>	<p>2004 CHRYSLER SEBRING TOURING</p> <p>V6, 4dr, Loaded, 32k, Balance of Factory Warranty *Four in stock*</p>  <p>\$14,900 \$349/mo</p>	<p>2002 CHRYSLER INTREPID ES</p> <p>V6, 4dr, Loaded, Alloys, 72k, Balance of Factory Warranty</p>  <p>\$11,900 \$279/mo</p>
<p>2002 GRANDPRIX GT</p> <p>V6, 4dr, Loaded, Balance of GM Warranty</p>  <p>only \$13,500 \$316/mo</p>	<p>2002 OLDSMOBILE ALERO</p> <p>4dr, Auto, Loaded, 37k, Balance of Factory Warranty</p>  <p>\$11,500 \$270/mo</p>	<p>2001 JEEP TJ</p> <p>4X4, 6 cyl, 5 sp, Air, CD, Hard & Soft Top, Mint Shape, Balance of Factory Warranty</p>  <p>\$15,900 \$372/mo</p>	<p>2001 GMC JIMMY SLE</p> <p>4X4, V6, 4dr, Loaded, 62k, Certified With Warranty</p>  <p>\$16,900 \$395/mo</p>
<p>2002 CHRYSLER SEBRING</p> <p>4dr, Alloys, Auto, Loaded, Balance of Factory Warranty</p>  <p>\$9,900 \$239/mo</p>	<p>2001 CHEVROLET MALIBU</p> <p>V6, 4dr, Loaded, 72k, Certified With Warranty</p>  <p>\$9,900 \$239/mo</p>	<p>2000 CHRYSLER INTREPID ES</p> <p>V6, 4dr, Loaded, 65k, Certified With Warranty</p>  <p>\$10,500 \$253/mo</p>	<p>2004 OLDSMOBILE ALERO</p> <p>V6, 4dr, Loaded, Auto, 39k, Balance of Factory Warranty</p>  <p>\$14,500 \$340/mo</p>
<p>2002 CHEVROLET IMPALA</p> <p>V6, 4dr, Loaded, 51k, Balance of Factory Warranty</p>  <p>\$13,900 \$326/mo</p>	<p>2003 JEEP LIBERTY SPORT</p> <p>4X4, V6, 4dr, Auto, Loaded, Alloys, 69k, Balance of Factory Warranty</p>  <p>\$21,500</p>	<p>2000 JEEP GRAND CHEROKEE LOREDO</p> <p>4X4, 6cyl, 4dr, Loaded, Certified With Warranty</p>  <p>\$15,900 \$372/mo</p>	<p>2002 GMC SIERRA SLE</p> <p>Ext. Cab, 4X4, V8, Auto, 4dr, Loaded, 73k, Certified With Warranty</p>  <p>\$22,500</p>

We use Scotia Bank, Anishnabek First Nation Credit Union + many more lenders.

ALL PAYMENTS INCLUDE TAXES.
\$0 Down. From 7.59%. 60 Months
OAC - Good or Poor Past Credit
ALL VEHICLES CERTIFIED
WITH WARRANTY

LAWSON MOTORS LTD.

1-800-250-6646

Elliot Lake - 1 Timber Road 705-848-1705
 Blind River - Hwy 17 West 705-356-2974