

Talk about good coffee!

Miss Muggins Coffee and Fresh Donuts



# CHAPLEAU EXPRESS

Vol. 13, Issue 36, May 23, 2009

PIZZA HUT & KFC  
There's a Reason We're Number 1  
"0 TRANS FAT"  
864-0911



## 2009 Soccer season in jeopardy

By Staff

The Chapleau Soccer season may be jeopardized due to a lack of volunteers. Last year, longtime volunteers, Rolf Fuchs and Margaret Kanala retired after many years of service with the Chapleau Soccer Association.

Unfortunately no one has stepped forward to fill in their shoes. As of press time, soccer is in limbo in our community.

Up to 160 kids were involved in

soccer last year. Being one of the most affordable sports, it seems unthinkable not to have it played in our community and to use our modern facilities, the "Earle J. Freeborn Field of Dreams" to it's fullest potential.

"What started out as a labour of love ended up as labour" says Rolf Fuchs. "We were even having problems getting parents to volunteers for BBQ's." he adds.

Mr. Fuchs went above and beyond in volun-

teering as repairs and seeding to the field were done by himself and a few other volunteers. It is disheartening to have put so much time in a sport over the years and to have it disintegrate with the retirement of two individuals.

Although not for everyone volunteering is needed and is a must to build a more cohesive community to live in.

If 160 kids were involved in the sport last year, there

is a possibility of at least 300 responsible adult individuals available for helping out in one way or another.

It is far easier to complain about the lack of activities for our youth than it is to volunteer to make things happen.

Chapleauites always come thru with flying colors so this situation just may be a wake up call for many talented individuals waiting to step forward and be the White Knight.



Long time soccer league volunteer Rolf Fuchs retired at the end of last year. Mr. Fuchs also volunteered in other associations including Chapleau Minor Hockey.

## More good news for local business incentives:

## New entrepreneur program to create jobs across the North

McGuinty Government Initiatives Drive Business Growth

A new Northern Ontario Entrepreneur Program (NOEP) will fuel the entrepreneurial spirit that drives innovation, creates jobs and promotes economic growth throughout Northern Ontario. The latest Northern Ontario Heritage Fund

Corporation (NOHFC) program will encourage northern entrepreneurs and community builders to put their ideas for new business into action by providing up to \$125,000 in conditional grant funding. Additionally, the criteria of the NOHFC's existing Enterprises North Job Creation Program and the Private Sector Emerging Technology Program are being significantly enhanced to better assist northern businesses. In the case of these two programs, up to 50 per

cent of NOHFC funding may now be in the form of a conditional grant.

"We are pleased to support entrepreneurs and the private sector in creating the enterprises and jobs

that will promote economic development." says Monique Smith, MPP for Nipissing. "By further expanding the NOHFC's support for private sector job creation, we can drive

business growth across Northern Ontario." adds Michael Gravelle, Minister of Northern Development and Mines and Chair of the Northern Ontario Heritage Fund

Corporation. Next week seminars will be held at Aux Trois Moulins Motels in both french and english. Dreaming of owning your own business? Attend! (See P.6)

## Downtown Day planned for June 6th

Downtown Day, Saturday, June 6, 2009 will be celebrated in Chapleau on Birch (Main) Street by a Car and Trailer Show, sidewalk sales, BBQ, refreshments and Mrs. Servent's delicious cotton candy.

It will be a

chance to check out the great car deals that are available this year, as well as outstanding bargains being offered by local merchants, including Chapleau Trailer Sales and Service. The participating car dealers include Mission Motors of Wawa and KIA of

Timmins.

Downtown Day is being organized by the Rotary Club of Chapleau, whose members will be cooking up gourmet sausages, hamburgers, cheeseburgers, and hot dogs in an effort to raise money for its local and international

projects.

This downtown celebration, June 6th, will be a fun day for families to mingle on Birch(Main) Street between the hours of 10 a.m. and 4 p.m., to look for good buys, to greet friends who have been hibernating all winter, and to enjoy a fine BBQ meal.

**Long Term Forecast**

**Friday**  
High 15  
Low 7


**Saturday**  
High 15  
Low 6

**Sunday**  
High 17  
Low 2

**Monday**  
High 17  
Low 8

**Tuesday**  
High 16  
Low 9

**Wednesday**  
High 19  
Low 6



**RACINE LAKE CAMPGROUND NOW OPEN!!**

BOOK NOW FOR YOUR SUMMER CAMPING TRIP BY CALLING 864-4318

SHOWER AND LAUNDRY FACILITIES; GENERAL STORE; GAS AND PROPANE ON SITE!

**KABOOM FIREWORKS FOR SALE!**

PREPACKAGED ASSORTMENTS OF FAMILY FIREWORKS. VARIETY OF PRICE RANGES.

TAKE THE DRIVE UP AND PICK UP YOUR FIREWORKS! FOLLOW THE SIGNS 25KMS INTO THE CHAPLEAU GAME PRESERVE. WEEKEND STORE HOURS 10AM TO 6PM.



## LETTERS TO THE EDITOR

Recently I was made aware that the Canadian Cancer Society supports research using human embryonic stem cells, that is cells derived from living human embryos which are systematically destroyed for research purposes. After checking myself I found this to be true: See ([http://www.cancer.ca/Canadawide/Cancer%20research/Funding%20cancer%20research/Research%20policies.aspx?sc\\_lang=en](http://www.cancer.ca/Canadawide/Cancer%20research/Funding%20cancer%20research/Research%20policies.aspx?sc_lang=en))

The irony is that there is an alternative to using embryonic stem cells for research purposes: adult stem cells which are non life-threatening to the donor. There have been successes in fighting certain diseases using adult stem cells.

In light of this I contacted the Canadian Cancer Society by e-mail and informed them I could no longer support their organization while this policy is in force. Only God gives a life, only He has the right to take a life.

Yours truly,

Hélène Pineau

## TRIBUNE LIBRE

Récemment j'ai pris connaissance que la Société canadienne du cancer subventionnait des recherches qui utilisent des cellules souches embryonnaires, c'est à dire des cellules extraites d'embryons humains avortés et donnés aux fins de recherches. Voulant vérifier si cette allégation était vraie, je me rendis au site de la Société elle-même et c'est bel et bien ce qui est affirmé : ([http://www.cancer.ca/Canadawide/Cancer%20research/Funding%20cancer%20research/Research%20policies.aspx?sc\\_lang=en](http://www.cancer.ca/Canadawide/Cancer%20research/Funding%20cancer%20research/Research%20policies.aspx?sc_lang=en))

L'ironie est qu'il y a déjà des recherches qui ont porté fruit en utilisant les cellules souches adultes, extraites sans menacer la vie du donateur. Et même s'il n'y avait aucun autre procédé de rechange, cette pratique va à l'encontre du respect à la vie et à la dignité qui revient à tout être humain.

Compte-tenu de cette révélation, je contactai la Société canadienne du cancer pour leur dire qu'elle n'obtiendrait plus de soutien de ma part tant et aussi longtemps que cette politique sera mise en application. C'est Dieu qui donne la vie, il n'y a que Dieu qui puisse la reprendre.

Hélène Pineau

**The Chapleau Express**  
P.O. Box 457  
Chapleau (Ont.) P0M 1K0  
Telephone - Fax : 705-864-2579  
e-mail : [chaexpress@sympatico.ca](mailto:chaexpress@sympatico.ca)  
**Published every Saturday/Sunday**  
**Deadline for receiving ads is Wednesday at 4 p.m.**  
The Chapleau Express is delivered free of charge to every household each Saturday. If you have any comments, please feel free to contact us. Subscriptions: **\$70.00 per year (Canada) \$150.00 U.S per year (U.S.A)** Canadian Publications Products Sales Agreement #30183799

Ads and advertisements can be dropped off at the Chapleau Innovation Centre Monday to Friday 9:00 a.m. to 4:00 p.m.

### Formation PLUS

Centre de formation francophone pour adultes

tiendra sa 18e Assemblée générale annuelle  
le lundi 25 mai 2009 à 19h30  
au cafétorium de l'É.S.C. Trillium

L'AGA sera suivi d'un vin et fromage!



**In Memory of**  
Léandre Lamontagne  
Who Passed Away,  
June 10th, 2007

*Just two years ago today  
Since our sad sorrows fell  
But in our hearts we mourn the loss  
Of him we loved so well  
The world may change  
From year to year  
And our friends from day to day  
But never shall the one we lost  
From our memory fade away  
I miss you so much*

*Sadly missed by your  
Wife Theresa & Family*



### Fern Gauthier is retiring!

All friends and colleagues are welcome to join us to celebrate his retirement on Saturday May 23rd at the Royal Canadian Legion at 8:00pm.

**Fernand Gauthier prend sa retraite!**  
Amis et collègues de travail sont cordialement invités à se joindre à nous pour souligné cette heureux évènement, samedi le 23 mai à la Légion royale canadienne à compter de 20h00.

### Dr. L. R. Simpson VETERINARIAN

Will be at the Trinity United Church  
**Monday, June 1st, 2009**  
FOR APPOINTMENTS CALL  
Nadene McEachren at 864-1055

### OBITUARY Memegos Joseph



At the Chapleau Health Centre on Monday May 11, 2009. Joseph, loving father of Joanne Memegos (Gerald), Anita Stephens (Peter), Joseph Picody, Fabian Picody, Bradley Picody (Beverley), Connie Corston (John) and Judy Fletcher (James). Loved grandfather of

Stephen, Theresa, Joshua, Rebecca, Leonard, Emily, Darwin, Kaneesha, Brittany, Sabe, Isaiah, Marcus, Sarah, Matthew, Nathan and great great-grand-children Alexander, Xavier, Vanessa and Anisah. Predeceased by his brothers Adam, Baptiste and William Memegos, his parents Ignace and Margaret Memegos and his grand-daughter Sierra. A Funeral Celebration was held at Sacred Heart Church on Thursday May 14, 2009 at 10:00 a.m. Interment Chapleau Municipal Cemetery. For those who wish, memorial donations to the Chapleau Health Centre Long Term Care Unit would be appreciated by the family. Arrangements entrusted to the Gilmartin Funeral Home, Wawa.

### OBITUARY

#### Burns Leo Thomas

(Retired Railway Conductor after 43 years of service with the C.P.R.)



At the Chapleau Health Centre on Monday May 18, 2009. Leo, dear husband of the late Blanche Brunette, loving father of Jane Ritchie (Darryl) and Ted (Rochelle) of Chapleau. Beloved grandfather of Megan, Matthew and Ben.

Dear brother of Leona McCrae and the late Loretta McAdam, Fr. Lawrence Burns, Marjorie Pullen, Pat Burns, Dorothy Turner, Eileen Morin and John Burns. Leo will be sadly missed by his many nieces and nephews. For those who wish, in lieu of flowers and food trays, memorial donations to the Bignucolo Wing of the Chapleau Health Centre would be appreciated by the family. Arrangements entrusted to the Gilmartin Funeral Home Wawa. The family would like to express their sincere appreciation and thank the nurses, staff and Dr. Marquardt for their care and compassion.

### GOING TO CHURCH

Catholic Church  
**SACRED-HEART OF JESUS PARISH**  
**PAROISSE SACRÉ-COEUR DE JÉSUS**  
26 Lorne Street North  
OFFICE- 21 Lansdowne St.N.  
864-0747  
Sunday/dimanche  
9:30 a.m. English  
11:00 a.m. Français  
Weekdays Mon-Sat  
en semaine Lun-Sam  
**Fr. Jacques Fortin**

#### ST. JEAN DE BRÉBEUF (Sultan)

Liturgy of the Word  
Liturgie de la parole Every 3rd  
Saturday 7 p.m. Bilingual  
Tous les 3e samedis 19h  
Bilingue  
Permanent Deacon Ted  
Castilloux

#### Diocese of Moosonee

**Anglican Church of Canada**  
**ST. JOHN'S CHURCH**  
4 Pine Street West  
864-1604  
Sunday Service  
10:30 a.m.  
Rev. Bruce Roberts

#### ST. MARY'S ANGLICAN CATHOLIC CHURCH

78 Devonshire Street  
864-0909  
Sunday Service 10 a.m.  
Rev. William P. Ivey

#### CHAPLEAU PENTECOSTAL CHURCH

9 Elm Street (P.A.O.C.)  
864-0828  
Sunday School 9:45 a.m.  
Sunday Services  
11 a.m. & 7 p.m.  
Family Night (ages 1-109)  
Wednesday 7 - 8:15 p.m.  
Pastor Dan Lee

#### TRINITY UNITED CHURCH

Corner of Beech and Lorne  
864-1221 Sunday Service and  
Sunday School 11:00 a.m.  
Anna Chikoski  
Soup Kettle every 2nd Wednesday  
of the month  
[www.angelfire.com/on/trinityuc](http://www.angelfire.com/on/trinityuc)

#### OUR LADY OF SEVEN SORROWS PARISH PAROISSE NOTRE-DAME-DES-SEPT-DOULEURS (Foleyet)

Liturgy of the World Sundays  
11 a.m.  
Liturgie de la Parole  
Dimanche 11h  
Mass every 2nd & 4th Sunday  
at 4:00 p.m.  
Messe sùx 2e et 4e dimanche  
à 16h

#### COMMUNITY BIBLE CHAPEL

Corner of King and Maple  
864-0470  
Communion Service 9:30  
Family Bible Hour 11 a.m.  
Including Sunday School  
Evening Bible Study and  
Ladies Bible Study  
during the week  
Transportation available  
Al Tremblay

# Sarissa poised to strengthen Canada's niobium position



by Jennifer S. Getsinger, PhD, P.Geo

Sarissa Resources, Inc. [SRSR-OTC Pink Sheets], reports significant new niobium-tantalum results and further development for its 100%-owned (subject to NSR) Nemegosenda Carbonatite Project, northern Ontario. According to President/CEO, Scott Keevil, Sarissa recognized the property's potential four years ago through the geological knowledge of director Cam Cheriton (PhD, Economic Geology). The property, on the eastern shore of Nemegosenda Lake 50 kilometres east of Chapleau, was explored by Dominion Gulf in the 1950s and written up by the Ontario Geological Survey. In the 1980s, reassessment of earlier results confirmed the possibility of a niobium-bearing ore body.

"There was no doubt there was an orebody - it just needed to be brought into NI 43-101 compliance," says

Keevil. "And with the growth in the developing world, increasing the demand for high strength low alloy (HSLA) stainless steel, the demand for niobium products has grown markedly."

Sarissa director Alan Hawke (BSc, MSc, Geology) aims to confirm historical estimates of at least 20 million tons of 0.47% Nb<sub>2</sub>O<sub>5</sub> by applying his expertise to a synthesis of known geological data and recent drilling results, which include averages of 0.44% Nb<sub>2</sub>O<sub>5</sub> over 240 metres (including 45 metres of 0.77% Nb<sub>2</sub>O<sub>5</sub>) and 129 metres of 0.56% Nb<sub>2</sub>O<sub>5</sub>, in two holes reported in April 2009.

Hawke says, "Results from past work, plus our own drilling, indicate this property contains not only one, but two world-class deposits of niobium mineralization." A comprehensive geological report compliant with NI 43-101 guidelines is expected soon.

At Nemegosenda Lake, Precam-

brian metamorphosed carbonatite (igneous carbonate rock associated with alkaline intrusive complexes) hosts the niobium-bearing mineral pyrochlore, a rare earth oxide with a high percentage of Nb<sub>2</sub>O<sub>5</sub>. Although its name means green fire, pyrochlore is commonly reddish brown like garnet, but looks like spinel with its octahedral shape and characteristic triangular facets. Most field geologists find pyrochlore and its host carbonatite rocks difficult to distinguish from mineralized limestone or marble.

Dozens of carbonatites in Ontario were first identified using airborne geophysical surveys. Recognizing pyrochlore in drill core was made easier for clever geologists at Sarissa Resources when they noticed a correlation between scintillometer readings and Nb<sub>2</sub>O<sub>5</sub> concentration, due to a small amount of included radioactive elements such as thorium and uranium

in pyrochlore and/or in its associated mineral assemblage (for instance, zircon).

Because of niobium's unique properties, such as heat resistance, high thermal conductivity, elasticity, corrosion resistance, ability to form stable adhesive layer of oxide, higher superconducting temperature than other metals and light weight in alloys, it is used in many high technology applications, from cell phones to bridges. Where strength-to-weight ratio or strength at high temperature are important, niobium is a preferred choice for steel alloys. For instance, the HSLA steel used to build the Millau Viaduct in France, an engineering marvel taller than the Eiffel Tower, contains alloyed niobium, and the International Linear Collider in Switzerland consumed some 500 tonnes of niobium in its 20,000 superconducting radio-frequency cavities.

Most world niobium comes from

Brazil or Canada, with more than 100,000 tonnes of Nb<sub>2</sub>O<sub>5</sub> coming from Brazil and just over 4,000 tonnes from Canada (2007 data from USGS). Increased niobium demand in the BRIC nations (Brazil, Russia, India and China) may affect supply to Europe and the U.S.A., which lack niobium production of their own, so Canada's role in providing niobium and other strategic metals is critical.

Canada's largest producer of niobium is the Niobec Mine in Quebec (IAM GOLD). Several other Canadian niobium prospects include niobium-tantalum carbonatite holdings of Commerce Resources Corp. [CCE-TSXV] near Blue River, BC, and others. Although the Nemegosenda property shows a lower overall Nb<sub>2</sub>O<sub>5</sub> grade than Niobec (historical estimate 0.47% at Nemegosenda, 0.6% at Niobec), Nemegosenda might be amenable to bulk mining in an open pit operation, a definite

cost advantage. As well as the main D Zone where past estimates were calculated, Nemegosenda carbonatite mineralization extends to a significant zone in the southeastern area of the property, where further definition drilling is planned.

According to Keevil, "This is definitely a world-class deposit in a safe and secure part of the world. If all we had was our D Zone we would be ecstatic, but we also have the much larger SE Zone that looks like it could host a further 170,000,000 tons of material."

Sarissa recently farmed out a 50% interest in its O'Connor Asquith gold prospect, Northern Ontario, to Converge Global Inc. [CVRG-Pink Sheets]. Converse must pay Sarissa \$25,000; 515,000 annually for the next three years; spend \$120,000 over 18 months on exploration and issue Sarissa 3,000,000 shares. Sarissa will be operator.

## Instructor Therapists

### Intensive Behaviour Intervention

• Chapleau area (one-year term, part-time, 25 hours per week)

You will be joining an exciting team to administer one-on-one and group applied behavioural analysis programs to children with autism and pervasive developmental disorders. An active member of a multi-disciplinary team, you will also participate in training activities and treatment planning as well as monitor progress and liaise with families. Your diploma or degree in social services, psychology or a related field is complemented by strong communication skills, a valid driver's licence, and knowledge of and experience with children who have autism and pervasive developmental disorders. Preference will be given to graduates of an Autism Behavioural Science certificate program. The ability to communicate in both official languages is essential.

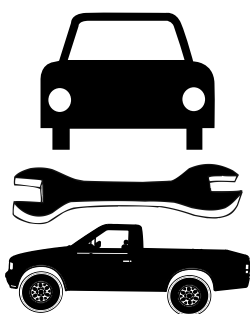
**Rate-of-pay: \$18.28 - \$21.51 per hour**



Please apply in writing by Friday, May 29th to:  
**Human Resources Department,  
 Child Care Resources  
 662 Falconbridge Road, Sudbury, ON P3A 4S4  
 e-mail: [humanresources@childcare.on.ca](mailto:humanresources@childcare.on.ca)  
 fax: (705) 525-0068**

MS Word or WordPerfect only, please. We thank all applicants for their interest; however, only those selected for an interview will be contacted.

 Ontario  
 Licenced  
 Motor Vehicle  
 Inspection Station



**Chapleau  
 Cree Auto/Truck**  
 Monday - Friday  
 8:30 a.m - 4:30 p.m.  
 "Preventive Maintenance keeps you on the road"  
 FOX LAKE RESERVE

**CALL  
 864-9090  
 for an  
 appointment**

# Thank you Chapleau for helping raise over \$1 million for our local healthcare!

Since 2001, the Chapleau General Hospital Foundation has been able to give over \$1 million to Services de santé de Chapleau Health Services to improve the quality of our patient care services right here in Chapleau. All of the money raised has gone directly towards acquiring medical equipment, hospital construction,

administration of patient care, and the teaching and delivery of hospital services in the Chapleau area. That's over one million dollars raised locally and utilized locally – something we can all be proud of!

As the fund-raising agency for SSCHS, the Chapleau General Hospital Foundation assists in the acquisition of medical services and

equipment that wouldn't otherwise be available to the members of this community. Having a financially sound hospital foundation gives SSCHS the ability to address our community's specific health needs as they arise.

So far, your support for the Chapleau General Hospital Foundation and SSCHS has given everyone in the Chapleau area access to the best quality emergency and outpatient services, acute care, mental health and long-term care services in North Eastern Ontario. But some of our patients health needs have still not been met because we do not have the medical technology they require.

The SSCHS, its staff and its patients are in vital need of an ECG Unit, an LTV Ventilator, a Patient

Lift Track system, MTS Gel and Quality Control System, a Nurse Phone System and an Ultrasound Machine. That is why we urge your continued support for the foundation as we prepare to launch our new "Together we will grow!" campaign.

This new 3-year campaign to raise \$263,000 is specifically geared towards providing our patients and their caregivers

with the life saving equipment that they so desperately need.

Residents of Chapleau have always shown a unique commitment towards their community and its resources. Such ongoing community dedication will ensure that the members of Chapleau have sustained access to exceptional healthcare for years to come. Imagine what we can do for our healthcare

and our community by continuing to work together.

Thank you for your unyielding support over the years, Chapleau!

"Together we will grow!"



North East LHIN

## Notice of Public Meetings

The North East Local Health Integration Network (NE LHIN) works with North East Ontario citizens, health service providers and partners to determine the health care priorities and services for our region.

A crown agency of the Ministry of Health and Long-Term Care, the NE LHIN plans, integrates and funds health care services for more than 560,000 people across an estimated 400,000 square kilometers.

You are welcome to attend the open Board of Directors meeting taking place on **Friday, May 29, 2009** from 9:00 a.m. in North Bay.

**Audit Committee Meeting – via teleconference**  
**Tuesday, May 26, 2009 - 9:00 a.m.**  
**Toll-free Teleconference: 1-866-299-8690**

**Board of Directors Meeting**  
**Friday, May 29, 2009 - 9:00 a.m.**  
**NE LHIN offices, Algonquin Boardroom**  
**555 Oak Street East, 3rd Floor, North Bay**  
**Toll-free Teleconference: 1-866-299-8690**

RSVP is required due to limited space. Please contact Lise Boucher, Corporate Executive Assistant at 1-866-906-5446, ext. 211 or [lise.boucher@lhins.on.ca](mailto:lise.boucher@lhins.on.ca).

For more information on how to stay informed and get involved in North East Ontario health care, please visit [www.nelhin.on.ca](http://www.nelhin.on.ca)

*Health and Wellness for all ... through an innovative, sustainable and accountable system.*

### HELP WANTED!

**Waitress/  
chambermaid**

**20 hours per week,  
working every other  
weekend, room &  
board available  
during your shift.**

**Please apply in  
person with resume  
or  
call 864-1670 to  
arrange an  
interview.**

**Kathy's Kitchen at the  
Golden Route Lodge  
705-864-1670**

## NOTICE OF HERBICIDE APPLICATION

**Notice is hereby given that Hydro One Networks Inc. – Forestry Services will be commencing Forestry Herbicide Application for brush control in your vicinity.** The work will include the selective treatment of undesirable vegetation that would, if left alone, grow into the conductors. Every effort will be made to leave compatible low growing vegetation, which will assist in reducing future maintenance requirements.

**Location of work: T61S Circuit - Timmins TS to Weston Lake DS.**

**Townships of Tisdale, Mountjoy, Ogden, Bristol, Carscallen, Denton, Keefer, Hillary & Sewell**

**Date of application: June 4 - July 3, 2009**

**Pesticide trade name: Garlon Ultra**

**PCP Act registration number: 28434**

**Name of pest: Undesirable Vegetation  
(Brush and sucker growth from stumps)**

**If you have any questions or concerns, please contact Hydro One Forestry at 1-866-898-5310**

**ALL PROPERTY OWNERS AFFECTED WILL BE CONTACTED**

## The Chapleau Child Care Centre

**would like to assist you**  
**to take care of your children while you work, attend school or enjoy that much-needed break.**

We offer a variety of early learning and care programs for children from birth to twelve years of age. Services are available in French and English from 7:30 a.m. to 5:30 p.m. Monday to Friday each week. We also offer different user options, family rates and subsidy.

**Stop by the Centre at 28 Golf Road or call 864-1886 for more information!!**  
**Let us be a part of your child's learning experience!**

# Merci Chapleau d'avoir aidé à recueillir plus d'un million de dollars pour les soins de santé locaux!

Depuis 2001, la Fondation de l'Hôpital Général de Chapleau a versé plus d'un million de dollars aux Services de santé de Chapleau Health Services (SSCHS) afin d'améliorer la qualité des soins aux patients, ici même à Chapleau. Ces fonds ont été consacrés à l'achat d'équipement médical, à la construction de l'hôpital, à l'administration des soins ainsi qu'à l'enseignement et à la prestation de services hospitaliers dans la région. Tout cet argent a été recueilli et sert dans la région, ce

dont nous pouvons tous être fiers!

La Fondation de l'Hôpital Général de Chapleau est l'organisme de financement des SSCHS. À ce titre, elle a financé l'achat de services et d'équipement médical qui, autrement, ne seraient pas disponibles à Chapleau. Une fondation hospitalière jouissant d'une bonne santé financière permet de répondre aux besoins de santé particuliers de la communauté au fur et à mesure qu'ils se font

sentir.

Jusqu'à maintenant, votre appui à la Fondation de l'Hôpital Général de Chapleau et aux SSCHS a permis à toute la population d'avoir accès aux meilleurs soins du Nord-Est de l'Ontario dans les domaines suivants : urgence, consultations externes, soins actifs, santé mentale et soins de longue durée. Cependant, on n'a pas pu répondre aux besoins de certaines personnes puisque nous ne disposons pas de la technologie

médicale nécessaire dans la région.

Les SSCHS, son personnel et ses patients ont absolument besoin d'un électro-cardiographe, d'un ventilateur LTV, d'un lève-patients sur rail, d'un système MTS et de contrôle de la qualité, d'un système téléphonique pour le personnel infirmier, et enfin, d'un appareil d'échographie. C'est pourquoi nous sollicitons votre appui soutenu pour la Fondation puisque nous lancerons bientôt notre campagne, « Ensemble pour un avenir prometteur! ».

Cette nouvelle campagne échelonnée sur trois ans a pour objectif de recueillir 263 000 \$. Par l'entremise de celle-ci, on veut particulièrement mettre à la disposition des patients et des fournisseurs de soins l'équipement permettant de sauver des vies dont ils ont absolument besoin.


Les résidents

de Chapleau ont toujours appuyé grandement leur communauté et ses organismes. Grâce à un tel dévouement soutenu, on s'assurera que la population aura accès à des soins de santé exceptionnels pendant bien des années. Ensemble,

imaginez ce qu'on peut faire sur le plan des soins de santé pour notre communauté.

À la communauté de Chapleau : merci de votre appui inconditionnel au fil des ans!

Ensemble pour un avenir prometteur!



**INVITATION AUX MEMBRES**

**ASSEMBLÉE GÉNÉRALE ANNUELLE**

du Centre culturel Louis-Hémon de Chapleau inc.

le lundi 25 mai 2009 à 19h30

au cafétorium de l'École secondaire Trillium  
9, chemin Broomhead

L'A.G.A. sera suivi d'un goûter

Pour être membre en règle vous devez avoir votre carte de  
membre 2009-2010.

Les cartes de membre seront en vente à la porte.



**YARD SALE**  
**VENTE D'OBJETS USAGÉS**

Thursday/jeudi  
Friday/vendredi  
**May 28-29 mai**

**Cedar Grove Lodge**  
Dining room/Salle à manger  
Between Friends Coffee and Thrift Shop  
Entre Amis, coin café et boutique d'occasion

**9:00 a.m. to 3:30 p.m.**  
**9 h 00 à 15 h 30**

Organized by the  
Supported Independent Living Program  
Donations can be dropped off  
at Cedar Grove  
or call **Élise at 864-1860** for pick up.

Organisé par le Programme  
d'aide à la vie autonome  
Nous acceptons les dons à Cedar Grove et  
nous pouvons aller chercher vos dons à  
domicile.

Veuillez **contacter Élise au 864-1860.**

*“We Want To Be **YOUR** New Car Dealer”*












**KIA SOUL**



**\$14,495.00**

1-800-661-6907

We'll see you in Chapleau on Downtown Day, June 6th, 2009



KIA MOTORS

The Power to Surprise™

Kia of Timmins

1285 Riverside Drive • 267-8291



www.kiaoftimmins.net

# West Nile Virus surveillance program update

Starting in 2009, the Sudbury & District Health Unit, and all health units across Ontario, will stop collecting dead birds to monitor West Nile virus activity. The purpose of collecting birds was to track WNV activity throughout Ontario. The presence of West Nile virus has been established; therefore, collecting birds is no longer

required. Mosquito trapping will continue, and the Sudbury & District Health Unit will begin trapping in June. The purpose of trapping is to identify what mosquito species are prevalent in the Sudbury and Manitoulin districts and to calculate WNV infection rates in the mosquito specimens that are collected. The

Health Unit uses this information to estimate the risk of transmission of the West Nile virus to humans. In Ontario, WNV has been found in birds, mosquitoes, horses and humans. Last year, the province reported four cases of WNV in humans. The Sudbury & District Health Unit reported its first and only case of human WNV in 2006.

To protect yourself and your family, take the following precautions:  
·Use an insect repellent.  
·Consider staying indoors from dusk to dawn when mosquitoes are most active.  
·Wear light-coloured clothing, including long sleeves, long pants, socks and a hat whenever you are outdoors (even when you are in your back

yard), especially from dusk to dawn.  
·Check all window and door screens in your home to ensure that there are no tears or holes for mosquitoes to get through.  
Remove standing water around your home. Change or remove standing water once a week from the following areas:  
·Bird baths, old tires, unused containers like

barrels, flower pot saucers, swimming pool covers, wading pools, clogged gutters and eavestroughs, clogged drainage ditches, small containers like cans or bottle tops, unused children's toys or vehicles.  
For information about West Nile virus visit [www.sdhu.com](http://www.sdhu.com).

## Point sur le programme de surveillance du virus du Nil occidental

À compter de 2009, le Service de santé publique de Sudbury et du district et tous les bureaux de santé de l'Ontario cesseront de recueillir des oiseaux morts pour surveiller l'activité du virus du Nil occidental (VNO). La collecte d'oiseaux avait pour objet de suivre l'activité du virus dans tout l'Ontario. La présence du virus a été établie; il n'est donc plus nécessaire de recueillir des oiseaux. Le piégeage

des moustiques se poursuivra, et le Service de santé publique de Sudbury et du district le commencera au mois de juin. Il a pour but de déterminer quelles sont les espèces de moustique répandues dans les districts de Sudbury et de Manitoulin et de calculer les taux d'infection au VNO chez les spécimens recueillis. Le Service de santé publique se sert de ces données pour évaluer le risque

de transmission du virus aux humains. En Ontario, le VNO a été décelé chez des oiseaux, des moustiques, des chevaux et des humains. L'an dernier, la province a signalé quatre cas de VNO chez des humains. Le Service de santé publique de Sudbury et du district a signalé son premier et seul cas de VNO chez l'être humain en 2006. Afin de vous protéger, vous et votre famille, prenez les

précautions suivantes: utilisez un insectifuge; songez à rester à l'intérieur du crépuscule à l'aube, période où les moustiques sont les plus actifs; portez des vêtements clairs, y compris des manches longues, un pantalon, des chaussettes et un chapeau, quand vous allez dehors (même dans votre arrière-cour), en particulier du crépuscule à l'aube; vérifiez toutes les

moustiquaires de fenêtre et de porte pour vous assurer qu'elles ne sont pas déchirées ou trouées et que les moustiques ne peuvent ainsi les traverser. Enlevez l'eau stagnante autour de votre résidence. Changez-la ou enlevez-la une fois par semaine dans les endroits suivants: les cuvettes pour oiseaux, les vieux pneus, les contenants

inutilisés comme les barils, les soucoupes de pot à fleurs, les couvertures de piscine, les pataugeoires, les gouttières engorgées, les fossés de drainage bouchés, les petits contenants comme les canettes et les bouchons de bouteille, les jouets ou véhicules d'enfants inutilisés. Afin de vous renseigner sur le VNO, visitez le [www.sdhu.com](http://www.sdhu.com).

P.O. Box 400 ♦ Fox Lake Reserve ♦ Chapleau, Ontario ♦ P0M 1K0  
Ph (705) 864-0784 ♦ Fax (705) 864-1760  
[mukesofn@bellnet.ca](mailto:mukesofn@bellnet.ca)



**Full-time Contract Employment Opportunity**  
**Public Works Garage Maintenance Position**

The Chapleau Cree First Nation is seeking a highly motivated, multi-skilled and experienced person to maintain, repair and perform general upkeep on all property and assets owned and operated by the First Nation.

The incumbent must have a valid DZ driver's license, experience operating heavy equipment (loader, dump truck) and be able to provide a clear driver abstract. The work demands are mainly out of doors and in all weather conditions with an emphasis on manual labour (brush clearing, shovel work etc.). Skills in prioritizing workload, following maintenance plans, and work schedules are essential.

This position is managed by the Public Works Garage Lead Hand. The scope of this position requires the incumbent to have a minimum of 3 years experience in the maintenance of a similar operation. Requirements of employment include but may not be limited to a clear CPIC.

Detailed position description available at the Chapleau Cree First Nation Band Office. All person interested in this position are encouraged to apply. Please provide a covering letter with résumé on or before May 29, 2009 to:

**Chapleau Cree First Nation**  
**P.O. Box 400**  
**828 Fox Lake Road**  
**Fox Lake Reserve**  
**Chapleau, ON P0M 1K0**  
**Att: Band Administrator**

We thank all applicants in advance. Only those selected for an interview will be contacted.

**Get a Grant to Start Your Business**

The province has just announced a funding program to help people establish new businesses.

**This may be the chance you've been waiting for!**  
Come and hear what it's all about and what you need to do to access this grant.

Two **FREE** public information sessions will be held at Aux Trois Moulins Motel:

**Tuesday, May 26 @ 7:00 p.m. (English)**  
**Wednesday, May 27, @ 7:00 p.m. (French)**

For any further details on this funding program, please contact Denis Rochon,  
Ministry of Northern Development and Mines, 864-1519.

**Obtenez une subvention pour établir votre commerce**

La province de l'Ontario vient tout juste d'annoncer un programme d'aide pour la création de nouvelles entreprises.

**Voilà votre chance!**  
Venez vous renseigner sur le programme et sur la démarche pour avoir accès à cette aide financière.

Deux sessions d'information gratuites auront lieu au motel Aux Trois Moulins:

**Mardi 26 mai, dès 19h00 (Anglais)**  
**Mercredi 27 mai, dès 19h00 (Français)**

Pour plus de détails sur ce nouveau programme de subvention, veuillez communiquer avec Denis Rochon, Ministère du Développement du Nord et des Mines, 864-1519.

# Sell your home in a buyer's market

You've decided to sell your home. How can you help to recession-proof its value and ensure the top sale price – especially in an economic downturn?

“Do some big-picture thinking before you put your home on the market,” says Chartered

Accountant Robin Taub, Founder, Robin Taub Financial Coaching in Toronto.

“With more homes for sale than buyers, as well as tight credit conditions, make sure that selling now is the right move for you. While this may be a good time to move up to a more expensive neighbourhood, the current credit crunch also calls for different financing and marketing strategies.”

Taub advises developing a plan based on the following factors: Budgeting and Financing

Prepare a budget and ask key questions. Is your job secure? Can you afford to move? Do you qualify for a mortgage? How much

equity do you have? How much financing will you need?

With financial institutions more reluctant to lend, you may need a higher down payment to qualify for a mortgage.

Be creative with your financing. Consider negotiating a vendor take-back mortgage (VTB) to fill the gap between the equity you have and what financial institutions are prepared to lend.

Be Realistic

The market determines the selling price – base your expectations on the comparative value of homes in your neighbourhood, not on how much you paid or

spent on improvements.

- To determine value, check current listings, recent sales, number of days on the market and expired listings (to gain a sense of over-priced or poorly marketed homes).

- Gauge the return-on-investment of key renovations: bathrooms and kitchens return 75 to 100 per cent, while interior and exterior painting returns 50 to 100 per cent of the cost.

- Remember - “location, location, location” – the proximity to transit, schools, parks and shopping boosts selling price in any market.

Dealing with a Real Estate Agent

- Make sure you like and

can work with the agent, on your schedule.

- Ensure the agent specializes in your neighbourhood and deals in your price range.

- Interview three agents and check their references.

- Ask how your home will be marketed.

- Review the agent's commission and listing agreement before you sign it.

Staging your Home

- Remember that first impressions count.

- Look through a buyer's eyes and detach yourself emotionally.

- Depersonalize your home by removing family photographs and eclectic décor.

- “Brighten and lighten”

- determine what needs to be cleaned, organized, repaired, painted (inside and out), and de-cluttered. This can add thousands of dollars to the sale price.

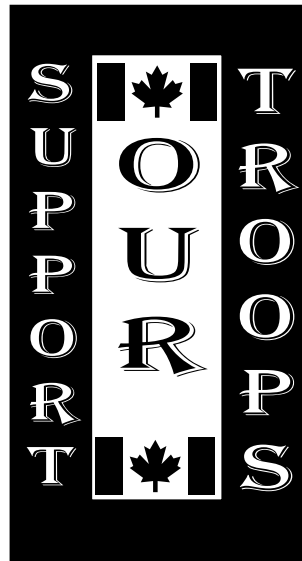
- Choose neutral colours if you are repainting.

- Create a welcoming atmosphere with fresh flowers, a fire in the fireplace, or cookies baking in the oven.

- Think curb appeal – clean up your yard, trim bushes, and shovel the walk in winter.

- Consider hiring a professional stager, especially if your home is empty.

Brought to you by The Institute of Chartered Accountants of Ontario



**RLISS Nord Est**

## Avis de réunions publiques

Le Réseau local d'intégration des services de santé (RLISS) du Nord-Est travaille avec les citoyens, les fournisseurs de services de santé et ses partenaires du Nord-Est de l'Ontario pour déterminer les priorités et les services de santé de notre région.

Organisme de la Couronne relevant du ministère de la Santé et des Soins de longue durée, le RLISS du Nord-Est planifie, intègre et finance les services de santé pour plus de 560 000 personnes dans une région dont la superficie est estimée à 400 000 kilomètres carrés.

Vous êtes cordialement invité à assister à la réunion ouverte du conseil d'administration le **vendredi 29 mai** dès 9 h 00 à North Bay.

**Réunion du Comité de vérification**  
– par téléconférence  
**Le mardi 26 mai 2009, 9 h 00**  
Téléconférence sans frais : 1 866 299-8690

**Réunion du Conseil d'administration**  
**Le vendredi 29 mai 2009, 9 h 00**  
Bureau du RLISS du N-E  
Salle de réunion Algonquin  
555, rue Oak Est, 3<sup>ème</sup> étage, North Bay  
Téléconférence sans frais : 1 866 299-8690

Le nombre de places étant limité, veuillez confirmer votre participation auprès de Lise Boucher, adjointe de direction au 1 866 906-5446, poste 211 ou par courriel [lise.boucher@lhins.on.ca](mailto:lise.boucher@lhins.on.ca).

Pour savoir comment vous tenir au courant et participer au système de santé du Nord-Est de l'Ontario, prière de consulter notre site Web, [www.nelhin.on.ca](http://www.nelhin.on.ca).

*Santé et bien-être pour tous...  
grâce à un système de soins de santé innovateur,  
viable et responsable.*

## GRANDE OUVERTURE

Le Chapleau Child Care Centre  
de Garde d'Enfants  
invite cordialement la communauté  
de nous rendre visite à la nouvelle garderie francophone  
situé au 14 rue Strathcona  
(École Sacré-Coeur)

Pendant la semaine du 25 au 29 mai nous vous  
accueillerons à un événement porte ouverte de 9h à 12h  
où chaque jour les visiteurs pourront faire une tournée  
du centre

Jeudi le 28 mai nous célébrerons notre grande ouverture  
à 11h afin de commémorer l'ouverture officielle de ce  
nouveau programme

S.V.P planifiez de venir visiter notre programme et  
profiter des rafraichissements!!

# Seniors – time for a second career?

The fact that you get the seniors' rate at the movies doesn't mean that you are too old to start a new business. If that's where your passion lies what is the first step on the road to becoming a business owner?

According to Chartered Accountant Greg Clarke, Partner, SB Partners LLP in Burlington, seniors living on fixed income should guard against unnecessary risks.

“Risk is involved in any business, so weigh the pros and cons, and get professional advice.”

Chartered Accountant Rob Wormald, Wormald & Company Chartered Accountants in Mississauga, advises prospective business owners on tax strategies and how to organize the business.

### Why Now?

Determine why you want to start a business at this stage

of your life and be prepared for a big learning curve.

As Clarke explains, starting a business was a popular move for seniors before the economic crisis hit. “Retirement is different now and, even after a long career, some people want to stay involved and do a little dabbling, perhaps as consultants. Others are interested in taking a long-standing interest or hobby and building it into a business. Today, however, some are returning to work to increase income and build financial security until the markets bounce back.

“Whatever your reason, you need to understand the compliance requirements and risks involved in small business so that you can properly structure your operations.”

### Get Information

“Before consulting a professional, do your own research,” continues Clarke. “This will lead to a more efficient

meeting at less cost, which can be important if you have a fixed income.”

Check the

websites of the Canada Revenue Agency (www.cra-arc.gc.ca) and Department of Finance Canada

(www.fin.gc.ca/fin-eng.asp), as well as the small business centres operated by many regional governments.

## Chapleau Public Utilities preparing for upcoming construction



A power outage last Sunday was necessary for the Chapleau Public Utilities to move hydro poles to facilitate the re-routing of traffic for the upcoming Monk Street repair beginning later this month.

### Algonquin Blvd. Animal Hospital

will be holding a Vaccination/Examination Clinic

**Date:** Saturday June 6th, 2009

**Time:** 10:00 am - 4:00 pm

**Place:** Chapleau Community Hall  
Minimum booking of 20

Registration deadline June 2nd, 2009

To book an appointment please call  
705-264-6400

\*\*\*\*\*

Une clinique vétérinaire est offerte  
par l'Algonquin Blvd. Animal Hospital

**Date:** samedi, le 6 juin, 2009

**Heure:** 10h à 14h

**Endroit:** Salle communautaire de Chapleau  
Réservation minimum de 20  
date-limite d'enregistrement le 2 juin 2009

Pour prendre un rendez-vous  
appelez au 705-264-6400

## East Fire Region - Forest fire advisory

May 20, 2009

There have been no new fires reported in the East Fire Region.

The forest fire hazard is low across the northern portions of the East Fire Region as the result of rain and cooler temperatures. The hazard is moderate along HWY 17 between Sudbury and Sault Ste. Marie and high to extreme in southern Ontario.

Traditionally in the spring, people do clean up around their rural homes and cottages and use brush pile fires and grass fires to remove dead grass and brush, or ignite woody debris in burning barrels. These types of fires always carry the risk of spreading into wildfires if not properly managed.

Please make sure you follow safe burning guidelines:

- The fire is ignited no sooner than two hours before sunset and extinguished no later than two hours after sunrise.
- Only a single pile is burned at any one time.
- The pile is not more than two metres in diameter and less than two metres high.
- The fire is at least two metres from any flammable materials.
- You have tools or water adequate to contain the fire to the fire site.
- A responsible person tends the fire until it is extinguished.

If it's windy – don't light!

If you live within a municipality, please contact your local municipal office or fire department BEFORE burning.



P.O. Box 400 ♦ Fox Lake Reserve ♦ Chapleau, Ontario ♦ P0M 1K0  
Ph (705) 864-0784 ♦ Fax (705) 864-1760  
mukesofn@bellnet.ca

## Full Time Employment Opportunity

The Chapleau Cree First Nation is seeking a reliable and experienced person to provide customer service and administrative support for the:

### Chapleau Cree Auto Truck Shop

This successful incumbent should possess the following skill set:

1. Pleasant and courteous disposition working with customers
2. Office duties (filing, maintain appointment book etc.)
3. Basic knowledge and practical use of accepted accounting procedures
4. Practical application of various computer programs
5. Valid Class G drivers license
6. Bondable
7. Knowledge of automotive repair business would be an asset
8. Any other related tasks as deemed necessary

This is a full time position (40 hours per week) with a mandatory three month probationary period. Candidates are encouraged to apply as soon as possible. We thank all applicants in advance but only those selected for an interview will be contacted.

Please forward your interest to:

**Band Administrator  
Chapleau Cree First Nation  
Fox Lake Reserve  
P.O. Box 400  
Chapleau, ON P0M 1K0  
Re: CCA/T Admin**



# Rotary's annual highway clean-up



**No Bugs! No Bears!** During a perfect afternoon this week, the members of the Rotary Club of Chapleau, and their spouses and children, cleaned-up part of HWY 101 East. This is an annual Rotary Club service project aimed at keeping this approach to our town looking its best for visitors and residents alike. And, unlike previous years, bugs and bears stayed away!



(CHAPLEAU) – Breach of Probation – On May 15, 2009 at 11:06 pm The OPP investigated a report of a group of youths kicking a fence on Lorne Street. A patrol was made and as a result one young person was arrested for being intoxicated in a public place and charged with Breach of Probation under The Youth Criminal Justice Act.

(CHAPLEAU) – Motor Vehicle Collision – On May 16, 2009 at 3:54 am The OPP investigated a motor vehicle collision involving a 1993 Chrysler Intrepid and a moose. The collision occurred on Highway 101 in Cochrane Township and resulted in minor injuries to the female driver and moderate damage to the vehicle. The moose ran into the bush.

(WHITE RIVER) – Stunt Driving – On May 16, 2009 at 10:30 am officers patrolling Highway 17 in Vasiloff Township had occasion to stop a southbound Toyota Matrix travelling in excess of 50 kilometres over the posted speed limit. This resulted in Burim DUKAJ, age 35 of Richmond Hill being charged with operating a motor vehicle while performing a stunt. The vehicle was impounded and the accused's driver's licence was suspended for seven days. He will appear in Traffic Court at a later date to answer to the charge.

La coalition Cœur en santé de Chapleau Northwood vous invite à

## Une marche communautaire des poussettes

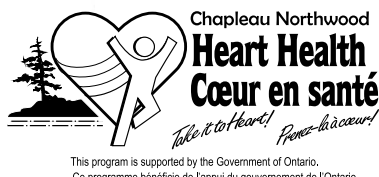
**Le 26 mai**

**à 9 h 30**

Venez nous rejoindre à l'occasion d'une marche qui partira du Centre de garderie de Chapleau (Petite enfance) et y reviendra.

**Marchez avec nous, puis faites une pause avec rafraîchissements et prix à gagner!**

Pour d'autres renseignements, communiquez avec le Service de santé publique de Sudbury et du district, (705) 864-1610.



This program is supported by the Government of Ontario. Ce programme bénéficie de l'appui du gouvernement de l'Ontario.

Chapleau Northwood Heart Health Coalition invites you to the

## Community Stroller Walk

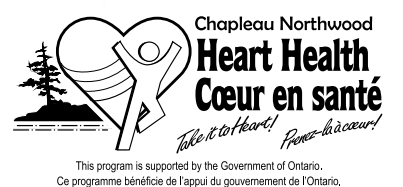
**Tuesday, May 26**

**9:30 a.m.**

You are welcome to join us for a walk from the Chapleau Child Care Centre (Early Years) and back again.

**Take a stroll with us, then stay for refreshments and prizes!**

For more information, call the Sudbury & District Health Unit at (705) 864-1610.



This program is supported by the Government of Ontario. Ce programme bénéficie de l'appui du gouvernement de l'Ontario.

# Planning for a 'possible' Pandemic

According to health authorities in this country and around the world, the H1N1 strain of influenza (Swine Flu) continues to pose a threat to public health and safety. For its part, the Canadian Federation of Independent Business (CFIB) has been pulling out the stops to provide information to small business owners in an effort to assist them in dealing with a pandemic in a worst-case scenario. CFIB realizes that more than just the bottom line, the safety of employees -- often family and friends -- is the priority of entrepreneurs. Planning and preparedness are therefore the key to meeting these priorities. The following are some of

the basic guidelines for business owners to help improve the chances of weathering a flu pandemic, if and when such a health crisis should occur:

- Plan for the impact of a pandemic on your business – Identify which elements of your business are essential to the maintenance of operations. Estimate the potential impact of personnel, supply and distribution disruptions resulting from a pandemic. Establish an emergency communications plan.
- Hold drills to practice your plan – This is the best way to know if the plans you have in place actually work. Also, it is the way to teach your employees what to do in case of an emergency.
- Plan for the impact of a pandemic on your

employees and colleagues – Forecast and allow for employee absences due to personal illness, family member illness, community containment and quarantine measures, school and business closures and public transportation closures. Improve employee access to insurance and social services. Establish ways, if at all possible, to limit face-to-face contact between employees and customers.

- Implement policies to be enacted during a pandemic – Develop leave, return-to-work and travel policies unique to a pandemic. Staggering shifts and using technology can limit person-to-person spread of disease within your workplace.

- Allocate resources to protect your employees and customers during a pandemic – Provide supplies such as sanitizers, antibacterial soaps, tissues and waste receptacles. Double check that ventilation systems are running properly. Establish the availability of medical consultation. If you rent office space try to have your landlord gear up cleaning procedures for the premises. If you are your own landlord, do this yourself.
- Communicate to and educate your employees – Provide updated, accurate materials covering basic pandemic flu facts and response strategies. Encourage good hygiene and coughing/sneezing etiquette. Educate employees about your pandemic flu plan. Provide home-care information to employees and family members.
- Coordinate with external organizations and help your community – Make firm arrangements with banks concerning lines of credit, etc. Exchange best practices with other businesses. Understand your community's capabilities

and offer your business' services.

- Utilize technology and all of the information at your disposal – The many media, especially the internet, provide a wealth of information which is being constantly updated. It's never too early to inform yourself. Thanks to advances in technology, more than ever persons in the workplace can now do their jobs outside the office. Use this option

to advantage if and when necessary.

In the event of a pandemic, there is a great deal which lies outside the bounds of human control. As business owners, adequate planning and preparation can ensure that you optimize what you are able to control. That way, we can do our best to safeguard the safety of our employees and keep our businesses up and running.

## NOTICE OF HERBICIDE APPLICATION

Notice is hereby given that Hydro One Networks Inc. – Forestry Services will be commencing Forestry Herbicide Application for brush control in your vicinity. The work will include the selective treatment of undesirable vegetation that would, if left alone, grow into the conductors. Every effort will be made to leave compatible low growing vegetation, which will assist in reducing future maintenance requirements.

- Location of work:** T61S Circuit - Timmins TS to Weston Lake DS.
- Townships of** Tisdale, Mountjoy, Ogden, Bristol, Carscallen, Denton, Keefer, Hillary & Sewell
- Date of application:** June 1 - June 30, 2009
- Pesticide trade name:** Tordon 101 and Sylgard 309
- PCP Act registration number:** 9007, 34737
- Name of pest:** Undesirable Vegetation (Brush and sucker growth from stumps)

If you have any questions or concerns, please contact Hydro One Forestry at 1-866-898-5310

**ALL PROPERTY OWNERS AFFECTED WILL BE CONTACTED**



### ATTENTION ALL RESIDENTS OF CHAPLEAU

We are proud to announce our **GRAND OPENING** of Chapleau Lodge Bar & Grill **Friday May 29th, 2009**



Everyone is welcome to come enjoy great meals during the day and also make reservation if you would like to have a taste of our fine Cuisine during dinner time.

**The Lodge is now under New Ownership!**

So please swing by and we would be delighted to meet you all. Due to new changes, our kitchen is now open to the public with new meals on the menu.

Therefore, don't miss out on **OUR GRAND OPENING**

We will be expecting you!  
*Sincerely,*  
**George Wilson (owner)**

OFFICIAL STATEMENT  
From the Desk of Ryan Saari,  
President Mission Motors of Wawa



To Whom It May Concern:

Please release the following statement.

"To all of our loyal customers; please be advised that we, Mission Motors, are pleased to announce that General Motors of Canada has selected us among the dealerships who will continue to provide you with the GM products and services you have come to know and trust. We look forward to a continued relationship with you."

Thank you,

Ryan Saari,  
President

**THE LOCAL MARKET PLACE**

**CHADWIC HOME, FAMILY RESOURCE CENTRE**

Offers shelter, emotional support, and information for women and their children who are in crisis situations. We have a Toll Free Crisis Line which is staffed 24 hours a day. We can arrange for free transportation to the Centre for women who live in the Algoma/Chapleau area. We also offer support to women who live in the communities of Chapleau, White River, Dubreuilville, and Hornepayne through our Outreach Program. Our Outreach Worker travels to those communities to meet with women who need emotional support as well as information about their rights and options. If you need to speak with the Outreach Worker when she is in your community, you can call the Centre at any time to set up an appointment. You do not need to be a resident of the Centre in order to use our services. If you need someone to talk to or if you just need someone to listen, call our Toll Free Crisis line at 1-800-461-2242 or you can drop in at the Centre. We are here for you.

**ALCOHOLICS ANONYMOUS**  
Offers help to anyone who desires to stop drinking. Open discussion meeting on Sundays at 2:00 p.m. Trinity United Church basement. Telephone contacts: 864-2786

**ALCOOLQUES ANONYMES**  
Offre de l'aide à celui ou celle qui désire arrêter de boire. Les rencontres ont lieu tous les mercredis soirs à 19h (7:00 p.m.) Au sous-sol de l'église Sacré-Coeur. Téléphonnez au 864-2786

**Narcotics Anonymous** offers help to anyone who desires to stop using drugs. Meeting every Thursday 7:30 p.m. basement Sacred Heart Church. Telephone contact 864-2786.

**Société Alzheimer Society** meetings will be held at the Chapleau Hospital every 1st Monday of each month starting from 7:00 p.m. to 9:00 p.m.

**APARTMENTS FOR RENT**

1-2 and 3 bedroom apts. and bachelor. For more information call 864-1148 or 864-4071(cell)<sup>Aug 29</sup>

**You need a decent apartment** with 1, 2 or 3 bedrooms, fully or semi-furnished, or not, dryer and washer hookups, outdoor balcony, storage shed, private parking. Central location. Call Quality Rental at 864-9075 and leave message. <sup>Aug 8</sup>

**CABINS FOR RENT**

Cabin for rent in Esher. Hydro included & fridge and stove. Call 864-2471 <sup>May 23</sup>

**FOR SALE**

2001 Viking Tent trailer. Sleeps 6. Very Good condition. For more info call 864-2189 <sup>May 23</sup>

**Pool Table, Washer and Dryer, 1992 Chrysler Eagle Talon Car** as is. 2007 Ford Explorer certified. Call 864-0977 for information.

**HOUSE FOR RENT**

**2 bdrm bungalow**, recently rebuilt and like new. Located on large quiet lot at 175 Cherry St. Available June 15 at \$575.00 per month. Call Con Schmidt at 864-0617. <sup>June 6</sup>

**OPEN HOUSE**

**House for sale by Owner.** Open House, May 30, 2009. 2 p.m. to 4 p.m.. 168 Devon Siding Rd.. For more information call 705-864-9007. <sup>May 30</sup>

**ADVERTISE: IT PAYS  
HAVE A GOOD  
WEEKEND!  
From  
Chapleau Express**



**WOOD STOVES**

For Sale, New Blaze King Wood Stoves, shipped direct to Chapleau. For the best prices on Blaze King wood stoves call Rick Geroux: 705-779-3304. <sup>cta</sup>

**Classified ads  
WORK**

**FOR MY LOVING WIFE**  
for being here for me through good times and bad for not expecting more when i've given all i've had for being patient and listening to what i have to say for being my hero and taking me away for being strong when i was weak for understanding when i could not speak for not judging me or putting me down for always being here when i need you around i hope i can give you what you've given to me thank you for being you and for being with me i am grateful to have you and i wanted to say have the most wonderful day happy birthday my love from your loving husband norm

**J L Baits**  
Now Open  
Live bait, minnows, worms and a growing stock of tackle! Located at the end of the Bridgeview Motel at 16 Birch St.  
Bulk orders available.  
After hours services: 705-542-8678

**CHAPLEAU COMMUNITY LIVING**  
**ANNUAL GENERAL MEETING**  
Thursday June 4th, 2009  
7:00 P.M.  
At 92 Lorne Street  
(Common room)  
Learn more about Community Living and how you can become involved.  
Everyone Welcome

**NEW AT THE CHAPLEAU PUBLIC LIBRARY**  
**NEW BOOKS**  
Dashing Through the Snow - Mary & Carol Higgins Clark  
Hitman - David Foster  
Breaking Lorca - Giles Blunt  
Jane Brody's Guide to the Great Beyond - Jane Brody  
**NEW DVDs - NOUVEAU DVD**  
Cats & Dogs - Comme Chiens et Chats  
Wall Street - Wall Street  
Mamma Mia! The Movie - Mamma Mia! Le Film  
Rush Hour - Heure Limite

**SLOMA CLEANERS**  
Drop off at **Between Friends (Cedar Grove)**  
Mon. Fri. 8.30 to 4.30

**BERRY'S FREIGHT SERVICES**  
TIMMINS - CHAPLEAU - TIMMINS  
MONDAY TO FRIDAY  
1lb. to 10,000 lbs.  
FOR QUALITY SERVICES AT INEXPENSIVE PRICES  
GIVE US A CALL AT  
1-705-264-4334

**ALL ADS ARE ACCEPTED AT THE CHAPLEAU INNOVATION CENTRE**  
DEADLINE FOR RECEIVING ADS IS WEDNESDAY 4:00 p.m.  
**CLASSIFIED ADVERTISING RATES**  
Regular Classified Ads  
First 25 words or less \$6.00  
Each additional word \$0.15+GST  
**No refunds on cancelled classified ads.**

**I.D. Photos**  
FAC - PAL  
**864-1870**

**Travis Gendron**  
Sales Manager  
61 Mission Road  
Wawa, Ontario, P0S 1K0  
Tel: 705-856-2394  
Cell: 705-856-5595  
Fax: 705-856-4290  
travisgendron@missionmotors.com

**MISSION MOTORS of WAWA**

NEW & PRE OWNED VEHICLE SALES  
GM Goodwrench SERVICE CENTER  
MISSION MOTORS 24hr TOWING  
PONTIAC, GM Canada, GMC, CHEVROLET

**ALLEMANO & FITZGERALD**  
Barristers and Solicitors  
**MICHAEL G. ALLEMANO, B.A., L.L.B.**  
Certified by the Law Society as a Specialist in Real Estate Law  
P.O. Box 10, 369 Queen St. E. Suite 103, Sault Ste. Marie, Ontario P6A 1Z4  
Phone (705) 942-0142 Fax (705) 942-7188  
P.O. Box 1700, 55 Broadway Avenue, Wawa, Ontario P0S 1K0  
Phone (705) 856-4970 Fax (705) 856-2713

**Northern Lights Ford Sales**  
Andrew G. McKenzie  
11 Years of Service  
Highway 17, North  
P.O. Box 1033  
Wawa ON. P0S 1K0  
Bus: 705.856.2775  
Fax: 705.856.4862  
sales@northernlightsford.ca

**BODYLINES BY CRACK LTD.**  
-5 Licensed Bodymen  
-Insurance Claims  
-Windshield Repairs and Replacement  
-Radiator Repairs  
-State of the Art Frame Machine  
**ALL WORK GUARANTEED**  
PLEASE CALL 705-856-1406

**LVP** LABERGE VENNE & PARTNERS  
PROFESSIONAL CORPORATION  
CHARTERED ACCOUNTANTS and CONSULTANTS  
COMPTABLES AGRÉÉS et CONSULTANTS

Professional Services to Northern Ontario for 25 years  
Financial Statements for Small Business & Corporations  
Tax Returns - Personal, Corporate and Trust/Estate  
Personal, Retirement, Estate Financial and Tax Planning Strategies  
Business Projections, Plans and Financial Proposals  
Computer Consulting  
ACCPAC and Quickbooks  
1970 Paris Street, Sudbury, Ontario P3E 3C8  
(705) 523.0272 (800) 581.7510 www.lvpartners.ca

**LVP** LABERGE VENNE & PARTNERS  
PROFESSIONAL CORPORATION  
CHARTERED ACCOUNTANTS and CONSULTANTS  
COMPTABLES AGRÉÉS et CONSULTANTS

25 ans de service professionnels pour les entreprises du Nord de l'Ontario  
États financiers pour petites et moyennes entreprises et corporations  
Rapports d'impôts personnel, de compagnie et de fiducie  
Planification financière et fiscale personnelle et de compagnie  
Projections financières, plans d'affaires et propositions de financement  
Consultation en informatique  
ACCPAC et Quickbooks  
1970 rue Paris, Sudbury, Ontario P3E 3C8  
(705) 523.0272 (800) 581.7510 www.lvpartners.ca

## Small business 101 with CFIB: Flexibility in working arrangements

In today's economy, the Canadian Federation of Independent Business (CFIB) knows that small- and medium-sized businesses are having to adopt flexible working arrangements to accommodate employees looking to integrate their work with the rest of their life in a balance way. Whether it is students, people involved in extra-curricular sports or the arts, people with family responsibilities, or people with health issues, flexibility for employees provides the possibility of combining work with other aspects of their lives, instead of having to choose between them.

While employees have some ability to choose, negotiate or request specific work arrangements, so to do employers. From the employer's

perspective, the benefits of choosing to offer flexibility are: getting and keeping the right staff, getting the best from staff, getting flexibility in return, and an enhanced reputation in the eyes of prospective employees.

In order to truly make it a win-win situation, CFIB recommends the following key principles for employers seeking the successful management of flexible working arrangements: Be real - know your constraints, and then look for the possibilities for being flexible. It's about give and take - There has to be clear expectations from the beginning that this is about give and take by both the employer and employee. 'Win/Win' for the business, the team and the indivi-

dual - Arrangements that do not work for all three will not be sustainable in the long term.

You can't always treat people the same - It is important to think about people as individuals with different needs that will change over time. Instead of creating an environment where there is only one way of doing things, where possible, create one that is flexible enough for all employees to contribute fully.

Share the responsibility - Involve staff in solving problems and finding better ways to do things. Be up front about work pressures and demands. Encourage them to sort out amongst themselves, as much as possible, any work problems or competing demands before turning to you or their manager.

Communicate - Flexibility works well if there is good communication between you and the individual concerned, and you and the full team. In particular it is important for everyone to understand who makes what decisions.

Keep an eye on things - Most of the time things will go smoothly. But when it doesn't, it is much easier to intervene early, rather than when

problems have grown.

Don't set it all in stone - Business needs change. Individual's needs change. You will need to be able to respond to both. Often it is useful to start with a trial program that can be extended, adapted or halted, depending on how well it works.

Keep it legal - Make sure you know what your rights and responsibilities are under employment legislation, and what

you have agreed to in your employment agreements. When necessary, get specialist advice.

CFIB is Canada's largest association of small and medium sized businesses.

Encouraging the development of good public policy at the federal, provincial and municipal levels, CFIB represents more than 105,000 business owners.

### Pimii Kamik Gas Bar & Gift Shop

Located on the Chapleau Cree First Nation

#### WINTER HOURS

will be from 7 a.m. - 9 p.m., 7 days a week

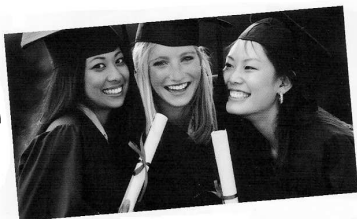
Drop by and check out our line of Authentic Native Crafts, Unique Gift Ideas, Jewellery, and Gift Certificates TOO!

We also carry road trip snacks, which includes Subs, Chips, Pop, plus a whole lot more.

Your Propane Refilling Station

### ROOTS WATCHES

"CLASS OF 2009"  
"CLASSE DE 2009"



**\$115.00 & \$130.00**

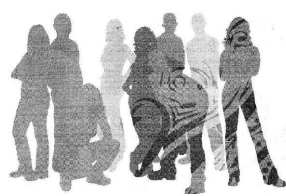
Win 1 of 5 \$1000 ROOTS Scholarships  
Gagner 1 de 5 1,000\$ ROOTS Bourse d'Étude

#### The Silhouette Collection



REMEMBER THE FRIENDS, THE STUFF YOU LEAVED... THE PLACES YOU WENT... REMEMBER THE GREAT THINGS WITH A SCHOOL RING. CREATE A RING THAT IS REALLY YOU. WE'VE MADE IT EASY - NOW YOU MAKE IT UNIQUE. IT'LL BE WITH YOU FOREVER!

Get a real choice.  
SCHOOL RINGS TO REMEMBER.



Available in Gold or Silver  
ORDER TODAY

COMPARE - We Won't be Undersold  
**Chapleau Village Shops**

WORKWEAR • FASHIONS • JEWELRY • GIFTWARE

864-1114

**864-1114**

Sears

Catalogue & Appliance Centre 864-1852

## Grumpy's Chipstand

### WEEKLY SPECIALS

**MONDAY**  
Indian Tacos  
**\$6.75**

**TUESDAY**  
Hamburg & Fries  
**\$7.50**

**WEDNESDAY**  
Shrimp & Fries  
**\$8.50**

**THURSDAY**  
Beef on a Bun & Fries  
**\$8.00**

**FRIDAY**  
Pickerel Dinner  
**\$14.75**

**SATURDAY**  
Chicken Wraps & Fries  
**\$8.50**

### ALL LUNCH SPECIALS FRIES AND POP

<b>SMALL</b>	<b>MED</b>	<b>LARGE</b>
<b>\$3.50</b>	<b>\$4.00</b>	<b>\$4.50</b>

**FOR TAKE OUT  
CALL 864-0581**

**SUNDAY**  
Coneydogs & Fries  
**\$6.50**

