

Talk about good coffee!

Miss Muggins Coffee and Fresh Donuts

# CHAPLEAU EXPRESS

Vol. 14, Issue 28, March 27, 2010

PIZZA HUT & KFC  
There's a Reason We're Number 1  
"0 TRANS FAT"  
864-0911



## Chapleau mourns the loss of a community pillar



Chapleau mourns the loss of one of its prominent citizens, Reverend William Ivey, after his untimely death on Monday, March 22, 2010. Bill was held in high esteem by many for his expertise in the business and engineering fields as a successful local entrepreneur, but also

for his pastoral and ministerial work as shepherd to the local Anglican Catholic congregation as well as the community at large.

William was born in Winnipeg on August 9, 1945 to William Nelson Ivey and wife Edna Boone. He has two brothers, Jeffrey and Clifford. He attended the University of Manitoba's School of Engineering, graduating as a Bachelor of Science in Electrical Engineering. During that time, he met and fell in love with Bonnie Stack, whom he married on November 17, 1967. The couple had four

children, Christopher, Michael, Daniel and Mary Lynne.

After a few years of employment in Manitoba, the couple moved to Thunder Bay in 1969, where William gained employment with Ontario Hydro. At that point, William decided to pursue his desire to be ordained in the Church, and entered London Ontario's Huron College in 1971. He graduated in 1974 with a Masters Degree in Divinity. He was ordained Deacon in 1974 and Priest in 1975, taking his first post for the Anglican Church of Canada at St. John's Church in Chapleau. In 1983, William was sent to take a new post in Parry Sound, Ontario, where he remained until 1986.

In 1986 he returned to Chapleau to help with the establishment of Chapleau Co-Generation Limited, Canada's pioneer wood-fired cogeneration plant.

That same year on February 28, William was licensed as Priest-in-Charge of the mission in Chapleau by the Anglican Catholic Church of Canada. The name of St. Mary's Church was given to the Chapleau congregation. As part

of his church ministry, he held the office of Archpriest, where he assisted the Bishop by acting as advisor to other pastors and providing mentorship to the recently ordained. He continued his ministry at St. Mary's Church while pursuing his professional career in the power industry.

William was an electrical engineer with experience in research and development, electrical equipment manufacturing, and the electric utility industry.

As President of Chapleau Co-Generation Limited, he was a pioneer in the independent power industry in Ontario. Chapleau Co-Generation, a 7-megawatt waste wood-fired cogeneration plant in the heart of the mid-northern Ontario lumber producing country, was Canada's first independent cogeneration facility. He proposed and helped to establish the Non-Utility Generation Advisory Council, a tripartite committee with representation from the independent power industry, Ontario Hydro and the Government of Ontario. This body served an important role in advising the Government and

Ontario Hydro with respect to policies affecting the fledgling industry during a critical phase of its development.

Well-known throughout the industry in Ontario and across Canada, William has been a frequent speaker at industry conferences and was actively involved in the transition to an open, competitive electricity market in Ontario.

In 1998, he went into partnership with Primary Power Management and Development Inc. (now known as Primary Power International). As President of Primary Power of Canada and related Canadian companies, William was heavily involved in development and acquisitions for many years, acquiring and operating three wood burning power projects in Canada: White River Biomeg in White River, Ontario; Valley Power in Drayton Valley, Alberta; and Dapp Power in Dapp, Alberta. With his partners, William owned and operated a wood waste recycling facility, Copeaux des Bois Secure, in Montreal, Quebec.

William retired as an owner/manager in 2006, but retained his involvement in the

biomass energy and bio-products field as a consultant. Recently, he was providing services to Innovation Initiatives Ontario North (IION) and the Sault Ste. Marie Innovation Centre as a Bioproducts Commercialization Specialist; and to the Township of Chapleau as the community's Economic Development Specialist.

As an expert in the newly emerging bio-economy, his main focus in the past six months was to help steer Chapleau in that direction, and help create a more stable industrial base to ensure stability and increase of employment opportunities in the community.

William was a devoted family man who cherished his wife, children, and grandchildren. He also loved the bush, spending many summers with Bonnie at their camp enjoying the quietude and beauty of the northern wilderness. He had an infectious sense of humour and loved to sing. William was also a man of God who was gifted as an orator and teacher. He will be remembered not only for his contributions to the business community, but as a servant of Christ.

**Long Term Forecast**

<b>Friday</b>	High -2 Low -21	
<b>Saturday</b>	High 3 Low -8	
<b>Sunday</b>	High 3 Low -6	
<b>Monday</b>	High 6 Low -11	
<b>Tuesday</b>	High 7 Low -2	
<b>Wednesday</b>	High 9 Low 0	



*For all your automotive needs, trust in Northern Haul Contracting!*

**We carry KalTire tires and studding is available.**

*Need sand and gravel? Septic system installation and pumping  
Camp road grading.*

*Give us a shout, great rates and excellent service!*

**It is our pleasure to serve you.**

**PLEASE CALL 705-864-1095 TO BOOK AN APPOINTMENT**

**VISIT OUR WEBSITE WWW.NORTHERNHAUL.COM FOR A COMPLETE LIST OF OUR SERVICES.**

# April 2010 Annual door to Door Campaign

The students from Chapleau Public School, École Sacré Coeur and Our Lady of Fatima School will be once again be creating posters to help the Canadian Cancer Society advertise its annual April door to door campaign.

by these children provide the awareness that is crucial to the success of our efforts and they are to be congratulated for their contribution.

The generosity of the citizens of Chapleau has been notable in the past and we are hoping to repeat our success.

The works created

Even during the difficult economic times of last year donations were virtually equal to those of previous years.

The funds generated by this annual event are used for many things such as: support programs for cancer patients and their families, research initiatives, transportation to and from treatment centres and much more.

We are once again counting on you to be as generous as possible when one of our many,

dedicated volunteer canvassers knocks on your door.

If you won't be available during the month of April or are missed by the canvasser and wish to donate—call Kathryn Crichton at 864-0771.

You may also see us at the Trade Show April 30th where the Northern Credit Union has once again invited us to share their booth and we would like to thank them for their kind consideration.

## Chapleau Education and Training Coalition Inc.

La Coalition pour l'éducation et la formation de Chapleau Inc.

### Firearm Possession and Acquisition Licence Course

Date: April 16, 17 and 18

Cost : Course: \$75.00

Manual: \$5.00

Exam: \$30.00

Instructor: André Byham

### Boating Safety Course

Receive the Pleasure Craft Operator Card

Dates to choose from:

March 25, April 8, 15, 22, 29, May 13 & 20

Cost: \$30

Time: 6:00 PM to 9:00 PM

### Standard First Aid including CPR

Date: April 10<sup>th</sup> and 11<sup>th</sup>

Duration: 15 hours

Cost: \$125

Registration Deadline: April 6

Instructor: Mr. Jacques Tremblay

### WHMIS

Date: April 9th

Duration: 4 hours

6:00 PM to 10: PM

Cost: \$50

Registration Deadline: April 6

Instructor: Mr. Jacques Tremblay

To register contact Linda:

By Phone: 864-9434

Chapleau Innovation Centre, 12 Birch Street

## Chapleau Figure Skating Club



Proudly Presents  
Our 2010  
Annual Skating Review

"SO YOU THINK YOU  
CAN SKATE CHAPLEAU"

ON  
Sunday March 28th, 2010

at

3:00 p.m.

at the

Chapleau Moore Arena

Entry Fee: By Donations

COME AND SUPPORT OUR  
LOCAL YOUTH

## CHAPLEAU MINOR HOCKEY ASSOCIATION Annual Meeting

Tuesday April 27, 2010 at 7pm  
Curling Rink Lounge

Amendments to the Constitution stating the section to be changed and the amended version, must be submitted by April 13 to CMHA, P.O. Box 1021.

Anyone interested in a Head Coach position must submit a letter of qualifications with 5 signatures of parents or current executive at the meeting.

Election of Executive positions – President, 1st & 2nd Vice Presidents, Treasurer, Secretary, Equipment Convenor & Public Relations Director are open for election. Nominations accepted at the meeting.

Minor Hockey needs your support.  
Please plan to attend!

The Chapleau Express

P.O. Box 457

Chapleau (Ont.) P0M 1K0

Telephone - Fax : 705-864-2579

e-mail : chaexpress@sympatico.ca

Published every Saturday/Sunday

Deadline for receiving ads is Wednesday at 4 p.m.

The Chapleau Express is delivered free of charge to every household each Saturday. If you have any comments, please feel free to contact us.

Subscriptions: \$75.00 per year (Canada) \$150.00 U.S per year (U.S.A)

Canadian Publications Products Sales Agreement #30183799

## TRINITY UNITED EASTER SERVICES

Friday April 2, 2010 - Good Friday Ecumenical Service "The Way of the Cross" at 10.30 a.m. starting from inside St. John's Anglican Church, then to Sacred Heart Roman Catholic Church and Trinity United Church. Lunch will be served after the Worship Service in Trinity Hall.

Sunday, April 4, 2010 - 8 a.m. "Sunrise Service" at the Peace Park with breakfast to follow in Trinity United Hall. 11 a.m. Holy Communion and Worship. Please join us for Worship and Fellowship.

All are Welcome

## GOING TO CHURCH

Catholic Church  
SACRED-HEART OF JESUS  
PARISH  
PAROISSE SACRÉ-COEUR  
DE JÉSUS

26 Lorne Street North  
OFFICE- 21 Lansdowne St.N.  
864-0747

New Schedule Effective Nov. 7/09  
Nouvel horaire à compter du  
7 nov/09

Sat/sam 7 p.m. (E or F)

Sun/dim 9:30 a.m. (F or E)

Weekdays/Semaine lun-ven  
9:30 a.m.

Wed/Mer (Hosp) 11:30 a.m.

Fr. Sébastien Groleau

CHAPLEAU PENTECOSTAL  
CHURCH

9 Elm Street (P.A.O.C.)

864-0828

Sunday 10:30 a.m. & 7 p.m.

Wed. Family Night 7-8 p.m.

Fri. Story Hour

3:30-4:30 p.m.

Pastor Dan Lee

TRINITY UNITED CHURCH

Corner of Beech and Lorne

864-1221 Sunday Service and

Sunday School 11:00 a.m.

Anna Chikoski

Soup Kettle every 2nd Wednesday

of the month

www.angelfire.com/on/trinityuc

ST. JEAN DE BRÉBEUF  
(Sultan)

Liturgy of the Word

Liturgie de la parole

Mass 3rd Sunday

Messe 3e dim 12:00 Noon (B)

Permanent Deacon

Diacon Permanent

Ted Castilloux

Diocese of Moosonee

Anglican Church of Canada

ST. JOHN'S CHURCH

4 Pine Street West

864-1604

Sunday Service

10:30 a.m.

Rev. Bruce Roberts

ST. MARY'S ANGLICAN  
CATHOLIC CHURCH

78 Devonshire Street

864-0909

Sunday Service 10 a.m.

Rev. William P. Ivey

OUR LADY OF SEVEN  
SORROWS PARISH  
PAROISSE NOTRE-DAME-  
DES-SEPT-DOULEURS  
(Foleyet)

Liturgy of the Word

Liturgie de la Parole

Mass 2nd-4th Sunday/  
Messe 2e-4e dim 12:00

Noon (B)

COMMUNITY BIBLE CHAPEL

Corner of King and Maple

864-0470

Communion Service 9:30

Family Bible Hour 11 a.m.

Including Sunday School

Evening Bible Study and

Ladies Bible Study

during the week

Transportation available

Al Tremblay

# Lose the salt without losing the taste.

Call a Registered Dietitian for free healthy eating tips.

EatRight Ontario 1-877-510-510-2

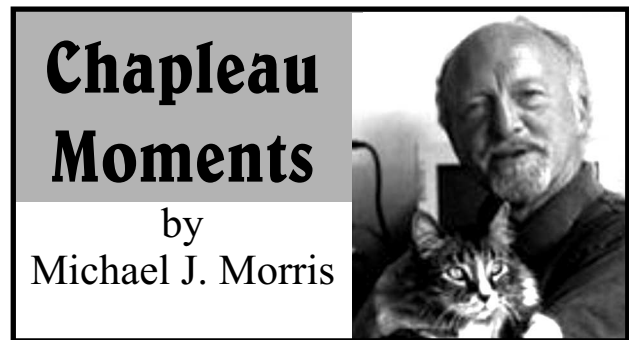


ontario.ca/eatright



Paid for by the Government of Ontario

# Louis Fortin on summers working on CPR ice gangs, Ken Schroeder on playing for Teen Town and Michel Hammond on growing up in Chapleau



When I asked Louis Fortin, one of my great Chapleau buddies from years ago to share his memories of working on the Canadian Pacific Railway ice gang, he replied, "Going that far back in the archives of my grey matter may be problematic however, I will give it a shot."

Louis noted that working on the ice gang was a great summer job for high schoolers. "My first stint was at age 15 (told a white lie) and continued over several summers until I moved over to the diesel shop and then hired on as a trainman in 1962. The summer ice gang consisted mostly of high school students and a few elderly transient types.

"The ice house was located approximately 500 yards from the railway station. At the time we provided icing service for Numbers 7 & 8 (the Dominion) and a host of extra trains that were initiated for the tourist season. The extras would come thru Chapleau at all hours of the day and night and we had to be available.

"Our first job was to literally chop, saw, chisel the large blocks from the ice

house and load the large steel carts in preparation for train arrival. The original blocks were approximately 3 feet high by 2'feet. We sawed the blocks in half and with the use of steel chutes sent the ice down to the platform level where it was loaded in the steel carts. At train time we met the train, opened the bunkers on the side of the passenger cars into which we loaded these blocks of ice each weighing approx. 100 lbs. This function was performed manually. We had to literally bend down below the bunker doors and slide the ice into the bunker. It goes without saying that the ice was necessary for air conditioning purposes."

"The Canadian(#s 1 & 2) was air conditioned electrically and we were not involved in icing those trains.

"The winter ice gang consisted mostly of laid off trainman and fireman as well as part time workers from the area. They took the ice off of the Chapleau river and loaded into the ice house. I did not work on the winter gang but I can imagine that is was a wee bit breezy on the river. If my memory serves me

right we were paid .70 cents/hr. We did accumulate a lot of overtime but at straight rates. Nevertheless a great summer job while having a lot of fun."

Thanks Louis for setting the scene for next week's Chapleau Moments when Dr. William R. "Bill" Pellow will share his memories from having worked cutting the ice during the winter months. Dr. Pellow, like Louis, is a member of one of Chapleau's pioneer families. He is the editor and publisher of 'Chapleau Trails' and author of 'From Overalls to Scrubs.'

### KEN SCHROEDER ON THE CHS ORCHESTRA

Ken Schroeder, another old friend and member of one of Chapleau's founding families was in touch to provide more details on the Chapleau High School Orchestra of the Fifties.

Ken said that it started with the school with Margaret Rose Fortin and Mary Serre and Harry "Boo Boo Hong" as supporters and coaches and then teen town became the movers behind it. However, because of shortages of members and instruments it evolved into a mix of seasoned players like Wilf Simpson on sax and piano, Greg Lucas on clarinet and Robert Lemieux on trumpet and Jim Ennis or Rita Morin or Eunice Michaud on piano and Kay McFarlane



**Popular Chapleau Orchestra in the Fifties** Back are Harry 'Boo' Hong (manager), Ken Schroeder (drums), Gordon Bolduc (accordion), Rita Morin (piano). Front are Robert Lemieux (trumpet), Wilf Simpson (saxophone) and unidentified organ player from Sudbury in town for winter carnival. Photo provided by Ken Schroeder.

singing and Ken on drums. Gordon Bolduc played accordion while Joey Steen played guitar.

"We would do the Legion Hall or Town Hall basement on certain occasions for teen town "Saturday Night Live". One year we had a big gig and hit the bright lights of Renabie Mines for New Year's Eve. This was before roads went that way. Train only and no Budd. Wonderful, fun times. Nobody could do "Stardust" like we could. "Beer Barrel Polka" was another special of ours."

After receiving Ken's comments out of the mothballs of memory came the thought that he was so right about 'Stardust' and the 'Beer Barrel Polka.' As dances would come to an end the polka was often

played followed by 'Stardust' as the Home Waltz. For younger readers the Home Waltz was the final number of the evening where you either danced with your date, or tried to get the girl you would like to walk or drive home to dance with you.

### MICHEL HAMMOND ON GROWING UP IN CHAPLEAU

Michel Hammond, who was born in Chapleau but moved away in 1965 when his father was transferred to southern Ontario by the CPR., sent me a email in which he shared some of his memories of growing up in the community.

"I have fond memories of Chapleau, picking blueberries, my Father hunting partridge and living on Queen

Street. I remember the Horseshoe Bridge and what a walk that was especially as children we were forbidden to cross the tracks. I remember my Father working at Smith & Chapple as a second job in order to feed the six of us.

"The snow piles and my Father having to wake up at early dawn to make a path for us to simply leave the house and walk to School. I attended Sacred Heart Elementary School which is no longer standing." (Cedar Grove Lodge is now on the site of the school.)

"I remember the five and dime and the Fox Theatre, where .35 cents would gain me access to the show, .25 cents, and a dime for a Humpty Dumpty

**Con't on P.4**

## Chapleau Cree Auto/Truck

**Monday - Friday**  
**8:30 a.m - 4:30 p.m.**

"Preventive Maintenance keeps you on the road"

**FOX LAKE RESERVE**

**CALL**  
**864-9090**  
for an  
**appointment**

# Chapleau Bantam Chicks win in rematch!



**Back Row – Marianne Leach, Manager; Juhani Paulaharju, Trainer; Karine Carriere; Ceilidh O'Hearn; Christiane Morin-Domingue; Holli Canning; Lauren Hamill; Kyle St.Amand, Coach; Middle Row: Meagan Jean; Madison Bignucolo; Erica Bouchard; Front Row: Kassie Friend; Ashley Leach; Krista Leach; Maggie St.Amand.**

After losing in a shoot out at the semi-finals to the Hearst Pink Ladies at the Sudbury Snowflake Challenge in February the Chapleau Bantam Chicks were ready for a rematch. So on

Saturday March 13, the Chicks and the Pink Ladies met in the newly renovated arena in Dubrieville to play again. Missing a few of their players due to the March break, including their

Captain, the Chicks brought three of the Peewee players along for the rematch.

The Pink Ladies started off the first game scoring in the first period, but the Chapleau Chicks

brought it back in the next two periods with Holli Canning and Ashley Leach both scoring in the second period. Then Lauren Hamill finished it with their third goal in the last period. With our goalie and defense holding the line, the Pink Ladies were not able to score again, and the Chapleau Bantam Chicks won 3:1 in game 1.

Our Chicks started the second game strong with the first goal by Holli Canning, assisted by Megan Jean. But with 21 seconds left in the first period the Pink Ladies tied it up. The Chapleau Chicks were not walking away without a win. Holli Canning and Karine Carriere both scored in the second period. Although the Pink

Ladies fought back hard scoring in the third period they were not able to overcome the Chapleau Chicks

winning 3:2. The Chapleau Bantam Chicks will be travelling to Hearst on April 24 & 25th for their final tournament of the year.

**SUBMIT YOUR FAVORITES RECIPES TO**  
[recipes@chapleauexpress.com](mailto:recipes@chapleauexpress.com)

**THANK YOU**  
 From the Chapleau Minor hockey Novice & Atom teams: Many thanks to all who helped make our tournament a success. Baz's Coins & collectibles, Bargain Shop, Between Friends Coffee Shop, Centre culturel Louis-Hémon, Formation Plus, Home Hardware & Furniture, Mel's Hairsalon, Le Salon, Kathleen Bouchard, Aux Trois Moulins Corner Store, Avon (Rolanda Holmes), Simple Scents Candles, Chapleau Village Shop, Chapleau Valu Mart, Sylvestre Transport, Mme Thérèse Gauthier, Mrs et Mme Sylvestre, MNR, Township of Chapleau, Chapleau Child Care Centre, Sylvie Sylvestre, Clara Lauzière & Steve Sullivan, Kevin Morris, Curling Club and J&N Signs. Big Thank you to all the parents that helped throughout the week end.

**Winners of the penny sale were:**  
 Hockey basket: McCaulay Piche Plourde  
 Mom basket: Lise Jewett  
 Girls basket: Annabelle Sylvestre  
 Coffee basket: Camille McNulty  
 Candy basket: Amy McAdam  
 Steve Sullivan hockey stick: Natasha Orton

## Chapleau Moments

**Cont'd from P.3**  
 Chip, 0.5 cents and a Roman Nougat Candy Bar .05 cents. The big hill at the end of Queen Street, does not seem so big now... Behind the hill was the Hospital where I was born, Lady Minto Hospital.

"I remember that Chinese restaurant at the foot of the bridge in town (the Boston Cafe, now Hongers) where they seemed to have the best Boston Cream Pie around."

Michel also advised that his father was a member of the Knights of Columbus and his mother was active in the Catholic

Women's League. Thanks Michel for the memories.

**CONGRATS TO GUS AND HELEN KATSEKOS**

Congratulations to Gus and Helen on the occasion of their 40th wedding anniversary! I extend my personal "cheers and applause" to you from out here in British Columbia, and a big hello to Nikki. I have such fond memories of hours spent in the restaurant and your awesome hospitality.

**THE REVEREND WILLIAM IVEY**

I extend my most sincere sympathy to Bonnie and all

the members of the Ivey family on the death of William. On a personal basis, William was my pastor when he was Rector of St. John's Anglican Church, and was always there when needed. During the years that I was Reeve of Chapleau, he was a great contributor to community activities, and was always willing to lend a helping hand. Rest in peace my friend. I have written more about William at [www.michaeljmorrisreports.blogspot.com](http://www.michaeljmorrisreports.blogspot.com). Michael J Morris <http://michaeljmorrisreports.blogspot.com>

## CENTRE D'ACTION CHAPLEAU ACTION CENTRE


### AZ Truck Driving Course in Chapleau

Are you interested in a career in the Transportation Industry? For more information on how you can receive this training locally, contact the Chapleau Action Centre at 864-9434 or drop by and speak with us at 12 Birch St. East. Financial assistance may be available.





This labour adjustment committee was made possible by a grant from the Ministry of Training, Colleges and Universities.



## The Chapleau Child Care Centre

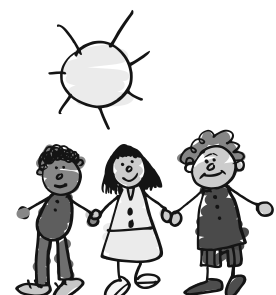
**would like to assist you**

**to take care of your children while you work, attend school or enjoy that much-needed break.**

We offer a variety of early learning and care programs for children from birth to twelve years of age. Services are available in French and English from 7:30 a.m. to 5:30 p.m. Monday to Friday each week. We also offer different user options, family rates and subsidy.

**Stop by the Centre at 28 Golf Road or call 864-1886 for more information!!**

**Let us be a part of your child's learning experience!**



# La francophonie en folie



## LE CARNAVAL OLYMPIEN À SACRÉ-CŒUR

Nous avons décidé de fêter le carnaval en grand cette année. Je crois que l'énergie des Olympiques s'est rendue jusqu'à nous.

La cérémonie d'ouverture du carnaval a eu lieu le mercredi 17 février en après-midi au gymnase. Tous les élèves ont été divisés en groupe. On leur a ensuite désigné un pays et ils ont créé le drapeau de leur pays. Jeudi, les 5e et 6e ont participé au tournoi annuel de ballon-balai organisé par l'école Our Lady of Fatima. Les autres élèves ont participé à des activités extérieures pendant une heure. En outre, ils pouvaient faire de la raquette, jouer au hockey, jouer à la ringuette, glisser ou jouer au ballon volant. Le vendredi 19

février, tous les élèves sont allés patiner à l'arène. Ensuite, nous avons eu la chance de déguster un bon dîner de hot dog et croustilles. Merci aux mamans qui sont venues nous aider. Ensuite, en après-midi les groupes sont retournés dehors faire des activités. Finalement, le carnaval s'est terminé avec la remise des prix...or, argent et bronze. On recherchait l'esprit d'équipe, le travail d'équipe, le leadership, l'enthousiasme, l'harmonie et le parler français... quel succès!

Les gagnants se méritaient entre autres, un laissez-passer pour une soirée sans devoir. Merci à tous ceux qui ont aidé à organiser et surveiller cet événement!

## LA NOUVELLE COUVÉE DE GARDIENS ET GARDIENNES



En arrière: Carter St-George, Ashley Leach, Julie Deschaînes, Emily Pilon, Brianna Fortin, Céline Tessier, Madame Lorraine Lemieux, enseignante bénévole du cours "Garde d'enfants".

En avant: Cassidy Fortin, Brittaney Pilon, Josée Deschaînes, Jonathan Parent, Amy McAdam et Désirée Eisner.

### Atelier « Antidote »

Tu aimerais apprendre à utiliser un logiciel qui t'aide à corriger tes écrits en français et en même temps te montre la raison pour laquelle la correction est faite? Eh bien! FormationPLUS offre un court atelier le mardi 6 avril à l'heure du dîner. Tu dois réserver une des 9 places, alors appelle dès maintenant au 864-2763.

### Site Web du mois Prestations du Canada

[www.prestationsducanada.gc.ca](http://www.prestationsducanada.gc.ca)

Prestations du Canada est votre portail Internet vers des renseignements sur l'ensemble des programmes et des services de prestations destinés aux particuliers au niveau fédéral ainsi qu'au niveau provincial. Prestations du Canada est un site du gouvernement du Canada.

## NOUVEAU PROJET À FORMATIONPLUS

FormationPLUS participe à un projet provincial qui s'intitule « Programme d'intervention en lecture pour adultes ». Le projet est une initiative du Centre FORA de Sudbury. Les buts du projet:

- o Augmenter les compétences en lecture des lecteurs émergents adultes en participant à un programme complet d'intervention en lecture avec une approche de réussite basée sur des conditions gagnantes;

- o Élaborer une méthode d'apprentissage qui développe des habiletés durables en lecture pour les lecteurs émergents adultes et qui, par conséquent, produit une main-d'œuvre plus qualifiée et des citoyens plus confiants dans leur avenir;

- o Développer les capacités et les habiletés des formatrices au Canada français pour assurer la mise en œuvre efficace d'un nouveau programme d'intervention en lecture;

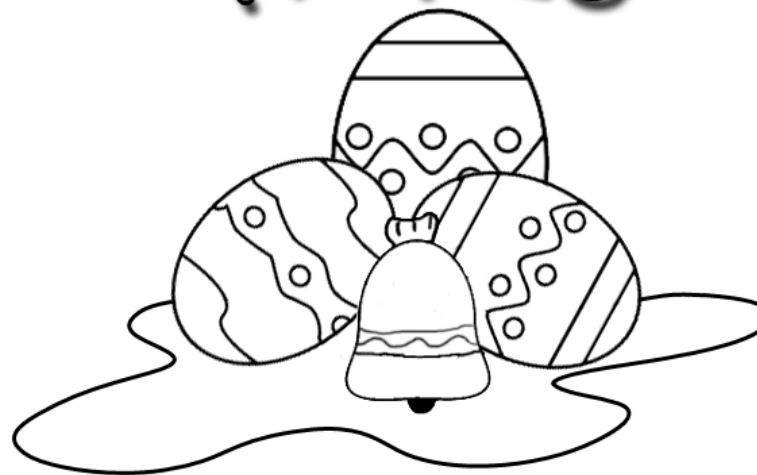
- o Développer la confiance des formatrices au Canada français afin de pouvoir intégrer plus aisément dans les activités de formation, non seulement la compétence en lecture, en rédaction et en communication orale, mais les six autres compétences essentielles.

La tâche principale de FormationPLUS sera de valider les produits créés par le Centre FORA. Au mois prochain, nous serons à la recherche de personnes voulant faire partie du projet.

## SOUPER-CONFÉRENCE DE CHRISTIAN PILON :)



## PAQUES



[jeu.123boutchou.com](http://jeu.123boutchou.com)

**Available locally**

# PRINTING

Envelopes  
Statements NCR  
Invoices NCR  
Receipts NCR  
Business Cards  
Draw Tickets  
Restaurant Place Mats  
Mail Inserts



864-1870  
jnsigns@gmail.com




**Vehicle of the Week**  
**2006 Chevrolet Uplander**  
61 Mission Road, Wawa, ON, P0S 1K0  
Phone (705) 856-2394

Price: \$13,100.00      Body Style:  
Odometer: 65,000 km      Exterior Colour: Blue Granite  
Interior Colour: Grey  
Doors: 5 Door      Engine: V6  
Transmission: Automatic      Fuel: Gasoline  
Drive: Front Wheel Drive      Stock #: 1056U

**WAS 14,900\$! NOW ON SALE**

## DALE'S TAX SERVICES

**OVER 20 YEARS EXPERIENCE  
COME SEE THE TAX LADY AND  
WALK AWAY HAPPY**



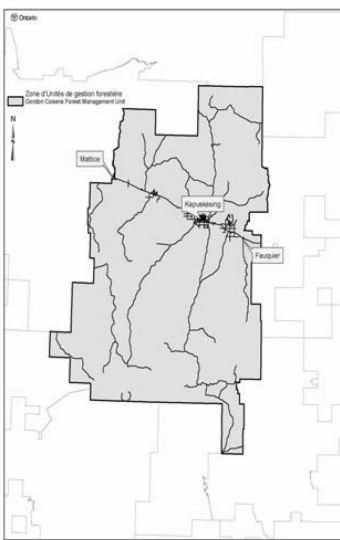
**MAXIMIZE YOUR RETURN  
CALL NOW!  
705-864-2421  
OR STOP BY  
62 Richard Street**



**PERSONAL & CONFIDENTIAL SERVICE  
PERSONAL TAXES  
SMALL BUSINESS TAXES  
(COFFEE, CHAT AND ADVICE FREE)**

### Public inspection of approved Contingency Forest Management Plan for the Gordon Cosens Forest for the period April 1, 2010 to March 31, 2012

The Ontario Ministry of Natural Resources (MNR), Tembec Enterprises Inc. and the Kapuskasing Local Citizens' Committee wish to advise the public that a contingency forest management plan has been prepared to cover forest management activities for the Gordon Cosens Forest for the period April 1, 2010 to March 31, 2012, while implementation of the complete FMP is delayed until April 1, 2012. The Contingency Plan is based on the Long-Term Management Direction (LTMD) for the 2010-2020 FMP which was endorsed by the OMNR's Regional Director. The production schedule for the Contingency Plan has been developed to minimize conflicts with the continued development of the 2010-2020 FMP, and considers the key timelines and workload associated with both projects. The planning team has completed a great deal of work on the 2010-2020 FMP, and the operations for the Contingency Plan are based on those planned operations identified during the development of the LTMD.



The Contingency Plan includes two years of harvest area, pro-rated from the available harvest area (AHA) of the LTMD. Areas have been planned for harvest and access in a manner that is consistent with the endorsed LTMD including:

- Management considerations;
- Management objectives, targets and strategies;
- LTMD outputs including the available harvest area by forest unit (AHA);
- Silvicultural Ground Rules and related silviculture strategies;
- Primary road corridors and use management strategies; and
- Forest landscape pattern (i.e., natural disturbance template).

Appropriate Area of Concern (AoC) prescriptions have been developed and implemented as part of the Contingency Plan, including AoCs for potential archaeological values.

You may inspect the maps of the planned operations as well as the text and other documentations at Tembec Enterprises Inc. office and at the MNR office, at the locations shown below, during normal office hours. They also are available on the Ministry of Natural Resources website at [ontario.ca/forestplans](http://ontario.ca/forestplans). The planning team members, the MNR District Manager and the local citizens committee are available to meet and discuss your interests and any issues or concerns that you may have. For further information, please contact any of the following individuals during normal office hours.

**The public is asked to provide comments within 15 days of the posting by (April 12, 2010)**


A formal issue resolution process, as described in the *Forest Management Planning Manual (2004)*, is available on written request. A summary of all comments collected throughout the planning process is available to the public.

The contingency plan has been prepared in accordance with the *Crown Forest Sustainability Act (1994) (CFSA)*, the *Forest Management Planning Manual for Ontario's Crown Forests (2004)*, and the terms and conditions of the Class Environmental Assessment for the Timber Management on Crown Land in Ontario, as extended and amended by MNR's *Class Environmental Approval for Forest Management on Crown Lands in Ontario (MNR-71)*.

Public comments are collected and documented as part of the public consultation process for forest management planning as required under the *Crown Forest Sustainability Act*. Under the *Freedom of Information and Protection of Privacy Act (1987)* or FIPPA, personal information will remain confidential unless prior consent is obtained. However, this information may be used by the Ministry of Natural Resources as public input for other resource management initiatives. For further information regarding FIPPA, please contact Roger Carrière at (705) 372-2217.

<b>Joshua Breau, RPF</b> Ministry of Natural Resources R.R.#2, Hwy. 11 West Kapuskasing, ON P5N 2X8 Tel: (705) 337-9314 E-Mail: <a href="mailto:joshua.breau@ontario.ca">joshua.breau@ontario.ca</a>	<b>Peter Terris, RPF</b> Tembec 1 Government Rd. Kapuskasing, ON P5N 2Y2 Tel: (705) 337-9776 E-Mail: <a href="mailto:peter.terris@tembec.com">peter.terris@tembec.com</a>	<b>Gilbert Peters</b> Kapuskasing Local Citizen Committee R.R #1, 237 Peninsula Rd. Moonbeam, ON P0L 1V0 Tel: (705) 367-2114 E-Mail: <a href="mailto:Gilpete29@hotmail.com">Gilpete29@hotmail.com</a>
---	--	--

Renseignements en français : Joshua Breau (705) 337-9314



# CLASSIFIED ADS WORK



*Literacy & Basic Skills*  
English, Math, Sciences, Computer Applications, Keyboarding and GED preparation

*Academic Career Entrance*  
Grade twelve equivalency for College, Apprenticeship Programs and Job Readiness

## Chapleau LEARNING CENTRE

**705-864-2323**

## FREE Adult Learning

24 Pine Street  
Chapleau, Ontario

**THE LOCAL MARKET PLACE**

**CHADWIC HOME, FAMILY RESOURCE CENTRE**

Offers shelter, emotional support, and information for women and their children who are in crisis situations. We have a Toll Free Crisis Line which is staffed 24 hours a day. We can arrange for free transportation to the Centre for women who live in the Algoma/Chapleau area. We also offer support to women who live in the communities of Chapleau, White River, Dubreuilville, and Horne-payne through our Outreach Program. Our Outreach Worker travels to those communities to meet with women who need emotional support as well as information about their rights and options. If you need to speak with the Outreach Worker when she is in your community, you can call the Centre at any time to set up an appointment. You do not need to be a resident of the Centre in order to use our services. If you need someone to talk to or if you just need someone to listen, call our Toll Free Crisis line at 1-800-461-2242 or you can drop in at the Centre. We are here for you.

**ALCOHOLICS ANONYMOUS** Offers help to anyone who desires to stop drinking. Open discussion meeting on Sundays at 2:00 p.m. Trinity United Church basement. Telephone contacts: 864-2786

**ALCOOLQUES ANONYMES** Offre de l'aide à celui ou celle qui désire arrêter de boire. Les rencontres ont lieu tous les mercredis soirs à 19h (7:00 p.m.) Au sous-sol de l'église Sacré-Coeur. Téléphonez au 864-2786

**Narcotics Anonymous** offers help to anyone who desires to stop using drugs. Meeting every Thursday 7:30 p.m. Saturday 8:30 p.m. basement Sacred Heart Church. Telephone contact 864-2786.

**Alcoholics Anonymous (A.A.)** Open discussion meeting every Monday evening. Brunswick House First Nation Band office lounge 7pm. **Narcotics Anonymous(N.A.)** every Tuesday same place same time. NNADAP Worker @ 864-0174 info.

**Société Alzheimer Society** meetings will be held at the Chapleau Hospital every 1st Monday of each month starting from 7:00 p.m. to 9:00 p.m.

**APARTMENTS FOR RENT**

**2 bedroom apartment** for rent. Also available a 4 bedroom house. Both available April 1st. Call 864-2282 and leave name and phone number. Mar27

**1-2 bedroom apt.** and bachelor. For more information call 864-1148 or 864-4071(cell)

**HOUSE FOR SALE**

**4 bedroom house,** 25 Queen corner lot. Renovated throughout. Wood stove/Electric heat. Priced to sell/ negotiable due to relocating. Richard 864-0135. Cont'd

**3 bedroom house,** large garage, new roof, new wood & electric furnace, fenced in yard. Can be seen at 77 Devonshire St. For more info call George or Monique at 864-2617 Mar27

**Spacious 1 bedroom apartment** fully furnished. \$450 + hydro per month. Call 864-2080.

**WANTED**

Looking for mature reliable person to clean apartment and house for seniors. Contact Anne Ouellette 864-0669

**SUPPORT GROUPS**

**CRIME STOPPERS**

**1-800-222-TIPS**

Custom Mugs..... Great Gifts!

**864-1870**

**KEBSQUASHESHING GOLF CLUB 2010 MEMBERSHIPS**

**THERE IS NO PRICE INCREASE THIS YEAR**  
Early Bird Prices, on or before May 2nd, 2010.

	Early Bird Prices	After May 2nd
Adult	\$350.00	\$450.00
Couples	\$550.00	\$650.00
Family	\$650.00	\$750.00
Seniors	\$275.00	\$375.00
Senior Couples	\$500.00	\$600.00
Students *see note	\$225.00	\$325.00
Juniors (18 & under)	\$150.00	\$250.00

Seniors are 55 years of age and older. Family rate includes Father, Mother and all children under the age of 18 living at home and still in school. Full time student (Sept to April) with a valid student card.

Early bird memberships may be purchased at Collins Home Hardware (Cash or Cheque) & Aux Trois Moulin Motel. For your convenience Aux Trois Moulin's Motel will accept credit cards. (VISA/MasterCard etc)

**Clean up Day May 1 if rained out  
May 2 at 9 Am  
Everyone welcome!**

The Kepsquasheshing Golf Club executive is looking forward to seeing everyone on the course.

**BRUNEAU'S TAX PREP & EFILE**

**JOHN BRUNEAU**  
864-0404  
101 LANSDOWNE ST. S.

- INSTANT CASH REFUND
- ELECTRONIC FILING
- FAMILY AND SENIOR DISCOUNTS
- FREE PICKUP AND DELIVERY FOR SENIORS
- YEAR ROUND SERVICE

- REMBOURSEMENT INSTANTANÉ
- RAPPORT D'IMPÔT ÉLECTRONIQUE
- RABAIS FAMILIAL ET POUR PERSONNES ÂGÉES
- LIVRAISON GRATUITE POUR PERSONNES ÂGÉES
- SERVICE À L'ANNÉE



**SLOMA CLEANERS**  
Drop off at Between Friends (Cedar Grove)  
Mon. Fri. 8.30 to 4.30

**BERRY'S FREIGHT SERVICES**  
TIMMINS - CHAPLEAU - TIMMINS  
MONDAY TO FRIDAY  
1lb. to 10,000 lbs.  
FOR QUALITY SERVICES AT INEXPENSIVE PRICES  
GIVE US A CALL AT  
1-705-264-4334

**ALL ADS ARE ACCEPTED AT THE CHAPLEAU INNOVATION CENTRE**  
DEADLINE FOR RECEIVING ADS IS WEDNESDAY 4:00 p.m.  
**CLASSIFIED ADVERTISING RATES**  
Regular Classified Ads  
First 25 words or less \$6.25  
Each additional word \$0.16+GST  
**No refunds on cancelled classified ads.**

**Beat the HST!**

**North TECH ROOFING**

**1-866-946-1410**

**MISSION MOTORS of WAWA**

**Travis Gendron**  
Sales Manager  
61 Mission Road  
Wawa, Ontario, P0S 1K0  
Tel: 705-856-2394  
Cell: 705-856-5595  
Fax: 705-856-4290  
travisgendron@missionmotors.com

NEW & PRE OWNED VEHICLE SALES  
GM Goodwrench SERVICE CENTER  
MISSION MOTORS 24hr TOWING

PONTIAC, GM Canada, GMC, CHEVROLET

**ALLEMANO & FITZGERALD**  
Barristers and Solicitors

**MICHAEL G. ALLEMANO, B.A., L.L.B.**  
Certified by the Law Society as a Specialist in Real Estate Law

P.O. Box 10,  
369 Queen St. E. Suite 103  
Sault Ste. Marie, Ontario  
P6A 1Z4  
Phone (705) 942-0142  
Fax (705) 942-7188

P.O. Box 1700,  
55 Broadway Avenue,  
Wawa, Ontario  
P0S 1K0  
Phone (705) 856-4970  
Fax (705) 856-2713

**Northern Lights Ford Sales**  
Andrew G. McKenzie  
11 Years of Service

Highway 17, North  
P.O. Box 1033  
Wawa ON. P0S 1K0  
Bus: 705.856.2775  
Fax: 705.856.4862  
sales@northernlightsford.ca

**LVP LABERGE VENNE & PARTNERS**  
PROFESSIONAL CORPORATION  
CHARTERED ACCOUNTANTS and CONSULTANTS  
COMPTABLES AGRÉÉS et CONSULTANTS

**Professional Services to Northern Ontario for 25 years**  
Financial Statements for Small Business & Corporations  
Tax Returns - Personal, Corporate and Trust/Estate  
Personal, Retirement, Estate Financial and Tax Planning Strategies  
Business Projections, Plans and Financial Proposals  
Computer Consulting  
ACCPAC and Quickbooks

1970 Paris Street, Sudbury, Ontario P3E 3C8  
(705) 523.0272 (800) 581.7510 www.lvpartners.ca

**LVP LABERGE VENNE & PARTNERS**  
PROFESSIONAL CORPORATION  
CHARTERED ACCOUNTANTS and CONSULTANTS  
COMPTABLES AGRÉÉS et CONSULTANTS

**25 ans de service professionnels pour les entreprises du Nord de l'Ontario**  
États financiers pour petites et moyennes entreprises et corporations  
Rapports d'impôts personnel, de compagnie et de fiducie  
Planification financière et fiscale personnelle et de compagnie  
Projections financières, plans d'affaires et propositions de financement  
Consultation en informatique  
ACCPAC et Quickbooks

1970 rue Paris, Sudbury, Ontario P3E 3C8  
(705) 523.0272 (800) 581.7510 www.lvpartners.ca

**GUS' II Family Restaurant**

**2 Daily Specials**

Special Price for School Kids

**NEW AT THE CHAPLEAU PUBLIC LIBRARY**

**BOOKS**  
The Eat-Clean Diet Cookbook - Tosca Reno  
Little Bird of Heaven - Joyce Carol Oates  
True Colors - Kristin Hannah  
Lemon-Aid 2009/2010 Used Cars & Trucks - Phil Edmonston  
Come Back, Como - Steven Winn  
A Mighty Heart - Mariane Pearl  
Fired Up - Jayne Ann Krentz  
The Greatest Show on Earth - Richard Dawkins

**BODYLINES BY CRACK LTD.**

- 5 Licensed Bodymen
- Insurance Claims
- Windshield Repairs and Replacement
- State of the Art Frame Machine

**ALL WORK GUARANTEED**  
PLEASE CALL 705-856-1406

# Happenings at Our Lady of Fatima



Students and staff at Our Lady of Fatima were thrilled on March 10th. They were all waiting to see who would be the winner of the 50" Plasma television raffle.

Students gathered in the hall to watch Mr. Phil Espirat

(Chair-person of Parent Council) draw the winning ticket.

Congratulations go out to Robert Boucher of Chapleau, who had the plasma television delivered to his house the same day. This fundraiser was a tremendous success and we thank

you all, for your ongoing support!

One of our parents, Chantale Parent, surprised the student body with her artistic talent and she delivered an 8x12 painting of different cartoon characters to embellish and refresh our hallway.



## Pimii Kamik Gas Bar & Gift Shop

Located on the Chapleau Cree First Nation

### WINTER HOURS

will be from 7 a.m. - 9 p.m., 7 days a week

Drop by and check out our line of Authentic Native Crafts, Unique Gift Ideas, Jewellery, and Gift Certificates TOO!

We also carry road trip snacks, which includes Subs, Chips, Pop, plus a whole lot more.

Your Propane Refilling Station

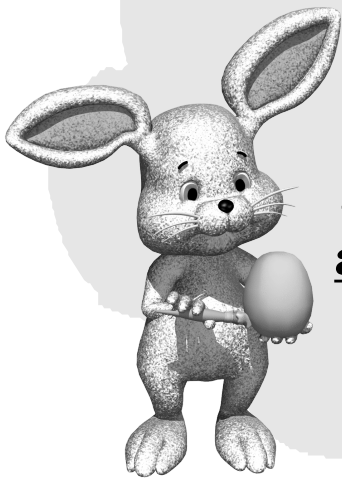


## Fill Your Easter Basket with Something Special

### SCRATCH & SAVE

from  
March 26 - April 3  
on

All new  
Fashions, Giftware  
and Gold and Silver  
Jewellery



Jewellery & Watch Repairs - Gift Certificates - Clothing Alterations - Donation Cards - Gift Wrapping - Helium Balloons - Watch Battery Changes - Engraving - Tuxedo Rentals - Office Supplies from Lyreco



864-1114

**COMPARE - We Won't be Undersold**  
**Chapleau Village Shops**

WORKWEAR • FASHIONS • JEWELLERY • GIFTWARE

864-1114

