

**Talk about good coffee!**  
Miss Muggins  
Coffee and  
Fresh Donuts

# CHAPLEAU EXPRESS

Vol. 17, Issue 28, March 23, 2013

**PIZZA HUT & KFC**  
There's a Reason  
We're Number 1  
"0 TRANS FAT"  
864-0911



## Chapleau Girls' Hockey Receives Boost with \$10,000 OTF Grant *Girl's hockey will get a boost from equipment purchased with the grant*



(L to R) back row: Micheal Mantha MPP, Coach Jeff Hamill, President Chapleau Girl's Hockey Association, Rotarian Dr. James Shearer, Rotarian Lucy Bignucolo, Rotarian Lynne Bignucolo, Mayor André Byham, Rotarian Luc Tessier, Vicki Langelier Fundraiser and Manager PeeWees, Gail Bignucolo, Treasurer Gil's Hockey Association, Rotarian Natalie Tessier and Trillium representative Michael Erksine. Middle row: Holli Canning, Amy McAdam, Sydney Bignucolo, Ashley Leach, Lauren Hamill and Krista Leach. Front kneeling: Sage Rousseau, Brooke Doyon, Tammy Lefebvre, Sara Dipasquale, Olivia Hamill.

**A**lgoma-Manitoulin MPP Micheal Mantha proudly announced news of a \$10,000 Ontario Trillium Foundation investment for the Chapleau Girls' Hockey program with the Rotary Club of Chapleau. Joining MPP Mantha was local

OTF Grant Review Team member Michael Erskine to congratulate volunteers and players on their success.

In partnership with the Rotary Club of Chapleau, the

Chapleau Girls' Hockey Association has purchased goalie equipment and training aids in order to make hockey more accessible for local girls and help the teams become

more competitive by building on hockey skills.

"As a hockey enthusiast I was pleased to see that the Ontario Trillium Foundation has

granted over \$10,000 to purchase equipment for the Girls Hockey Association of Chapleau. I also want to acknowledge the efforts of the Rotary Club of Chapleau for promoting and supporting this project. I applaud all efforts to support and encourage women's participation in sport." said Michael Mantha MPP/député

"The Rotary Club of Chapleau is pleased to partner with the Chapleau Girls' Hockey Association in order to make hockey more accessible to local girls. By improving accessibility and competitiveness at tournaments, the club hopes to promote active participation, a love for the game and more importantly, the development of self-esteem, cooperation and team play for girls from PeeWee to Midgets. We are pleased to receive the







OTF grant to in support of our work." added Natalie Tessier,

Established in 1951, the Rotary Club of Chapleau has played a vital role in various local and international projects, from partnering with or providing funds to local groups such as the Chapleau Girls' Hockey Association and from contributing to international humanitarian projects such as the eradication of Polio and the distribution of wheelchairs and Shelter Boxes to third world countries.

A leading grant-maker in Canada, the Ontario Trillium Foundation strengthens the capacity of the voluntary sector through investments in community-based initiatives. An agency of the Government of Ontario, OTF builds healthy and vibrant communities.



### Long Term Forecast

<b>Friday</b>	High 0 Low -10	
<b>Saturday</b>	High 0 Low -6	
<b>Sunday</b>	High -1 Low -8	
<b>Monday</b>	High 2 Low -7	
<b>Tuesday</b>	High -3 Low -9	
<b>Wednesday</b>	High -1 Low -6	

## Adam Beach Lends Voice To Chapleau Movie

by Steve Schmidt

**I**t's midnight and I'm sitting with Adam Beach in the lobby of his downtown Sudbury hotel. And though he's clearly tired, he still wants to know more about Chapleau, and our movie, and how long I've been directing. "About 15 minutes," I quip. You can't help feeling like a newcomer when you're

sitting with someone who's stellar career includes work along side such luminaries as Daniel Craig in Cowboys & Aliens, Nicholas Cage in Windtalkers, and Ryan Phillippe in Flags of Our Fathers. And though some know him from Smoke Signals - and I first saw him in Bruce McDonald's Dance Me Outside - you probably know him from his starring role on the hit

CBC series, Arctic Air. He's got a mischievous smile, speaks quietly, listens intently, and soon has you thinking he's just a regular guy. By the time I leave the hotel a half hour later, I'm convinced. Adam Beach is one cool dude. As I drive back to my hotel, I marvel at how this came to pass.

Three months earlier - Christmas in Chapleau. Our feedback screenings for the

locally shot feature film, The Road to Tophet, have been a success! Armed with our audience response cards - we settle in to make the final adjustments to the movie. We're still searching for something that will tie the whole story together. We visit Brian Edwards of Chapleau Cree First Nation to talk about his idea - voice over narration - a Windego

story. By the time I return to Vancouver, he's written it. And it's very good. I record it with fellow Chapleau boy, Dustin Hollings in Vancouver and I start cutting it into the show.

Meanwhile in Sudbury, Axel Green, our irrepressible producer, is now working on the latest Ryan Reynolds film, Queen of the Night - directed by Atom

### SPRING FEVER HAS HIT MISSION MOTORS

Purchase Or Lease A Car Or Crossover  
In The Month Of March and  
**0%** Receive a \$500 Gas Card **72**

and don't forget about  
0% financing up to 72 months on select models

Come In And See The Sales Team At Mission Motors Today



61 Mission Road, Wawa, ON, P0S 1K0  
Phone (705) 856-2394

# Adam Beach Lends Voice To Chapleau Movie



Axel Green, Steve Schmidt, Adam Beach and Brian Edwards

**Cont'd from P.1**  
Egoyan. Axel decides to rent a screening room and do a feedback screening for the cast and crew. Adam Beach, in Sudbury shooting another movie, shows up. And really likes the show. In Vancouver I receive a text message: "Adam Beach wants to do the

narration for The Road to Tophet!" I book a flight, and a few days later, I'm standing in a recording studio in Sudbury with Axel and Brian, getting chills listening to Adam read the Windego story. "I hope it's okay" says Adam. "It's awesome!" I say. The three of us,

Axel, Brian and I, can't stop smiling. In that moment, we're so proud of each other, of our movie, and of the community we come from. Of the way so many folks in Chapleau have pulled together to help make the movie happen. "I can do it again!" says Adam with a big smile. "I can do it better."

As we leave the studio, Adam's only concern is that we got what we needed. Yes, Adam Beach is one cool

dude. And he's given us a great gift by lending us his voice. It'll definitely open some doors for us. So we're well out of the gate but we're still a little ways from the finish line. Our fundraising campaign on [indiegogo.com](http://indiegogo.com) is entering its final days. And we could use your help. Your contribution will help to pay for colour correction, a proper sound mix and original score. If you would like to help, please go [indiegogo.com/TheRoadToTophet](http://indiegogo.com/TheRoadToTophet) and help us finish the movie! The perks are great: a DVD of the show, a T-shirt, even a poster of the movie. You can make a difference - and help us shoot for the stars! A big THANK YOU to our most recent contributors: Gerard & Donna Rooney, Rick Trombley, Lianne Plourde, Stephen Heiti, Sheila Hunter, Claude Lamontagne and Tara O'Hearn St.Amand.

## Letters to the Editor

Re: Chapleau Moments

When Bill Cachagee kindly mailed me a copy of your paper dated Dec. 6th, 2012 in Sudbury, I was really thrilled. He had attached a note pointing to a letter which my father had written to Santa in 1948 on my behalf.

While reading the rest of the paper it brought back so many wonderful memories of my childhood while living in Chapleau. I was always so happy that I had the opportunity to grow up in such a friendly town.

One of my favourite memories goes back to all the dances we attended each weekend. By the way, I used to think Mike Morris was the best dancer in town.

I want to take this time to thank Bill for sending me a copy of the newspaper. It was very thoughtful of him. This copy also showed a picture of his and Doreen's grandson with his hockey team. How time does fly!!

Joanne (Moyle) Davies  
Finlandia Village  
Sudbury, Ontario

## THANK YOU

The family of the late Marcel Morin, wish to express their deep appreciation to those who have offered such kindness, support and messages of sympathy and comfort in our bereavement. We also wish to extend our gratitude to Dr.'s Stephen and Kendra Saari and to the medical staff of the Chapleau Health Services as well as to Father Sebastien for all of your support and compassion during such a difficult time. A special thanks to Valerie Fahrer of P.M. Gilmartin Funeral Home.

Marian Morin & Family

## The Chapleau Express

P.O. Box 457, Chapleau (Ont.) P0M 1K0

Telephone - Fax : 705-864-2579

e-mail : [chaexpress@sympatico.ca](mailto:chaexpress@sympatico.ca)

Published every Saturday/Sunday

Deadline for receiving ads is Wednesday at 4 p.m.

The Chapleau Express is delivered free of charge to every household each Saturday. If you have any comments, please feel free to contact us. Subscriptions: \$80.00 per year (Canada) \$160.00 U.S per year (U.S.A). Canadian Publications Products Sales Agreement #30183799

The publisher or editor of The Chapleau Express reserves the right to edit or withhold from publication any letter for any reason whatsoever. Once received, all letters become the possession of The Chapleau Express. Letters reflect the opinion of the author, not necessarily that of The Chapleau Express or its staff.

## OBITUARY

Mary Rail



A long time resident of Chapleau passed away at the Chapleau Health Services on Sunday March 17, 2013 at the age of 96 years. Mary Rail (nee Lowrie) was born on February 19, 1917 in Gartly, Aberdeenshire, Scotland. She was predeceased by her parents William Lowrie

and Mary-Jane Milton of Huntly, Aberdeenshire, Scotland. Beloved wife of the late Paul Rail of Chapleau. Dear mother of Vanessa Santerre (Claude) of Chapleau, Philip Rail of Wawa, Scott Rail of Mont Laurier, QC, and Frank Rail (Celine) of Chapleau. Loving grandmother of Kenny Rail of LaSarre, QC, Johanne Santerre of Ottawa, Melanie Rail of Chapleau, Paul Rail of North Bay, Natasha Rail of Mississauga, Marco Fluet and Chantal Fluet both of Quebec. Proud great greandmother of 6. Predeceased by her sisters Nellie Michaud of Chapleau and Jeany Milton of Huntly, Aberdeen, Scotland and by her brother Doddie Lowrie of Huntly, Aberdeen, Scotland. Mary will be fondly remembered by her niece Mary-Jane (Michaud) Bujold and by many other nieces and nephews in Canada and Scotland. A Memorial Mass was held at Sacred Heart Church on Thursday March 21, 2013 at 11:00 a.m. with Reverend Sebastien Groleau officiating. Memorial donations made to the Sacred Heart Church or to the charity of your choice would be appreciated by the family. (Funeral arrangements entrusted to the P.M. Gilmartin Funeral Home, Wawa, 1-800-439-4937).

# EMPLOYMENT ONTARIO

Centre d'emploi de  
Chapleau Employment  
Resource Centre

# Ontario

# EMPLOI ONTARIO

Come and see us at  
12 Birch Street E.  
Chapleau

**705-864-0430**

Everyone is welcome

- Skills Training for high demand jobs
- Financial support to go back to school
- Resume's & cover letters
- Incentives for employers
- use of computers, printers, and fax
- Referral to SECOND CAREER

- Formation professionnelle pour un emploi a forte demande
- L'aide financière pour le retour a l'école
- Résumé et lettre de motivation
- Récompense pour employeurs
- Utilise nos ordinateurs, imprimante et Télécopieurs
- Référence a DEUXIEME CARRIERE

Venez nous voir au  
12 rue Birch E.,  
Chapleau

**705-864-0430**

Tous sont bienvenus



Conseil des Services du District de  
**Manitoulin-Sudbury**  
District Services Board

# Canadian Pacific Railway stretched budget in designing efficient, economical buildings such as standard T-1 depots including Chapleau by 1886

## Chapleau Moments

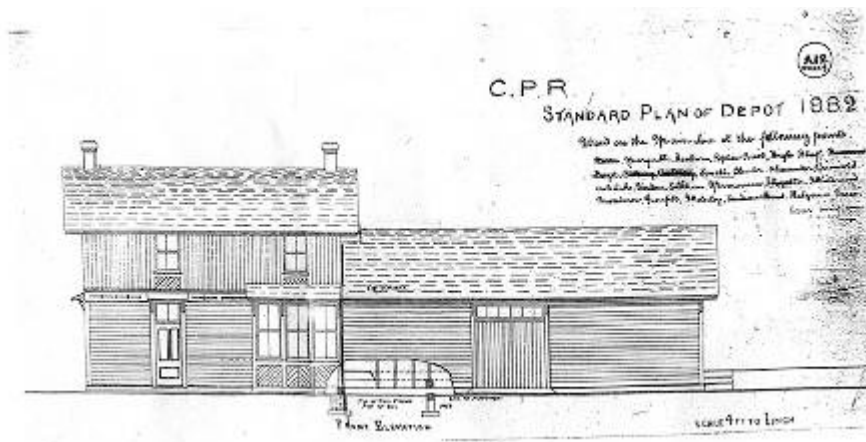
by Michael J. Morris



Ian Macdonald, former Chapleau resident who at one time worked for the Canadian Pacific Railway, and is now retired head of the department of architecture and professor emeritus at the University of Manitoba, shares his research into the CPR's strategy of stretching budget by designing a limited number of efficient and economical building types and duplicate them as many times as necessary. The CPR standard T-1 depot is a good example of this strategy. Here is Ian's story on the T-1 depot. He will share more on Chapleau's railway heritage in a later column. Thanks so much for this insight Ian. MJM

October 1884 where a temporary divisional point was established. The CPR's survey team laying out the route and staking out the town site had reached Chapleau in the fall of 1884. The track laying crews, hard on the heels of the surveyors, arrived at Chapleau in February 1885. In a matter of a few short months, the CPR would have to build a fully operational permanent divisional point and relocate an entire community from Biscotasing to Chapleau. Speed of construction was therefore one of the major factors influencing how things would be built.

Chapleau was one of the last divisional points on the massive railroad project to be built at a time when the finan-



Drawing of T-1 depot (CPR Archives Ian Macdonald collection)



Missinaibi station 1885 (CPR Archives Ian Macdonald collection)

**By Ian Macdonald**  
Chapleau's railway heritage commonly refers to locomotives and rolling stock but also includes the town itself and what makes it unique and distinc-

tive. Chapleau, as a community, actually began 82 miles east of the town's present location at Biscotasing. West-bound track laying crews had proceeded as far as Bisco by early

cial resources of the CPR were close to being exhausted and the Ottawa government was in a state of complete chaos. In those desperate days it was necessary to make one dollar do the work of a hundred. Chapleau's buildings would therefore be no more or no less than what was necessary to do the job. Building solutions had to be innovative, cost effective and functional.

One of the CPR's strategies of stretching budget was to design a limited number of efficient and economical building types and

duplicate them as many times as necessary. The CPR standard T-1 depot is a good example of this strategy. Apparently by 1886 there were sixty-two depots built from the same set of drawings. The T-1 depot type consisted of a 30 ft. x 24 ft. two storey building and a 24ft. x 40ft. single storey baggage room. The first depots at Missinaibi and Biscotasing were examples of this kind of building.

The first depot at Chapleau was similar to the typical T-1 with the exception of a larger single storey  
**Cont'd on P.4**



Restored T-1 depot at Stirling, Ontario (Ian Macdonald collection)

<p>Ontario Licenced Motor Vehicle Inspection Station</p>		<p><b>Chapleau Cree Auto/Truck</b> Monday - Friday 8:30 a.m - 4:30 p.m. "Preventive Maintenance keeps you on the road" <b>FOX LAKE RESERVE</b></p>	<p><b>CALL</b> <b>864-9090</b> for an appointment</p>
--	--	--	---

# Chapleau Moments



CPR surveyors meet native people near Chapleau 1884 (CPR Archives Ian Macdonald collection)

Cont'd from P.3

component, which was fifty feet in length and contained the baggage room, Dominion Express and a restau-

rant. The original Chapleau depot was purchased by G.B.Nicholson in 1910, relocated to Monk Street and

converted to housing. These buildings, still fully functional, are one of the last existing examples of this iconic CPR depot and most certainly the last example of a divisional point depot

It should be noted that the exact system that the CPR used for classifying their early depots is either unknown or not obvious. T-1 which is short for Type-1 is the most commonly used reference for this depot type. They have also been occasionally referred to as "Van Horne stations".

As a matter of interest, one of the only other remaining T-1 depots in existence is located in Stirling, Ontario near Trenton. An enterprising community group, sensitive to the practical value of heritage, acquired and relocated their depot to a new location on a new full basement foundation. The building was completely restored and now provides space for the Stirling

Rotary Club as well as a variety of local community events. One might imagine the possibility of the original Chapleau depot enjoying a third life someday as, say, a convenience store and coffee shop that was part of a Railway Heritage park.

A few years ago, Bill McLeod asked me to write a few pages on Chapleau buildings for his most recent book



Bisco CPR station 1885 (CPR Archives Ian Macdonald collection)

on Chapleau titled Chapleau: Retrospective on Life in an Isolated Northern Community. I thought I could cover the subject in two or three pages and wound up sending him a forty

five page monograph. I was, even at that, just scratching the surface and Michael has graciously provided me the opportunity of writing one additional column on the subject. My email is



Chapleau CPR depot 1900. (CPR Archives Ian Macdonald collection)

## Pimii Kamik Gas Bar & Gift Shop



Located on the Chapleau Cree First Nation

### WINTER HOURS

will be from 7 a.m. - 9 p.m., 7 days a week

Drop by and check out our line of Authentic Native Crafts, Unique Gift Ideas, Jewellery, and Gift Certificates TOO!

We also carry road trip snacks, which includes Subs, Chips, Pop, plus a whole lot more.

Your Propane Refilling Station



**ROCH'S AUTO REPAIR**  
24 hour Emergency Towing serving Chapleau since 1996 with automotive needs: Tires, sales, installation and repair.

Roch would like to take this opportunity to welcome Class A mechanic **Albert Lapierre** to his team. Call and book an appointment today for all your automotive needs.



705-864-1477  
705-919-6915 (cell)

### RATE PAYERS MEETING

APRIL 2, 2013  
6:30 p.m.  
ROYAL CANADIAN LEGION

CALL 705-864-2238 FOR MORE INFORMATION



We are currently seeking qualified candidates for the following position:

### 1 PART-TIME PHLEBOTOMIST

Minimum- Maximum Hourly Rate as per Collective Agreement  
\$25.16 - \$28.41  
Training will be provided

This position reports to the Senior Medical Laboratory Technologist and is responsible for the proper collection and identification of laboratory specimens (blood/urine) following all accepted techniques. Conducting accurate and quality ECG tracings on laboratory patients. Performing clerical and other support duties as assigned.

#### Qualifications:

- Successful completion of Grade 12 or equivalent.
- Excellent organizational and communications skills.
- Ability to demonstrate interpersonal and communication skills in dealing with the public in a courteous manner.
- Must be fluent written and orally in English and French.

Hours: Monday to Friday 8:00am – 12:00pm

Interested applicants may submit résumés by March 29th, 2013 to:

**Human Resources**  
Services de santé de Chapleau Health Services  
6 Broomhead Road, P.O. Box 757  
Chapleau, Ontario  
P0M 1K0  
Tel: (705) 864-3061  
Email: chapleauhr@sschs.ca

We thank all applicants for their interest, but only those selected for an interview will be contacted. All applications received will be held strictly confidential. Cet avis est disponible en français.

# Photography workshop



by Jennifer Ribout

From the end of November 2012 to the end of February 2013, I offered a photography workshop in which people could attend to learn the basics of photography. The lessons included tips on contrast, composition, technical terminology, portraiture, landscape,

angles, etc. They were all presented using Power Point and there were small tasks assigned to ensure that everyone was learning well and efficiently. The group consisted of 15 great people, (group shot of myself and five of the group shown in inset) all willing to learn. There was much improvement from

beginning to end. It was a really great experience and I want to thank everyone who attended.

Now that the basic class on photography is over, I am now offering another workshop on creative photography. In this workshop, I will help people find their inner creative photographer

by exploring the different types of photography and by having them put their creativity to the test. The first session is on Tuesday, March 26th, 2013 at E.S.C Trillium at 7:00 pm and the cost is \$30 for 8 sessions. Hope to see you there!

*Avec l'aide du Centre culturel Louis-Hémon, j'ai offert un atelier de base en photographie. L'atelier a eu lieu de novembre 2012 jusqu'en février. L'atelier consistait à l'utilisation de la caméra, la monture de la caméra, les angles et les contraste, les angles et la composition etc. Après chaque session, afin de m'assurer que tous les gens avaient bien compris, je donnais un petit travail sur la session. Je remercie les 15 personnes qui ont participé à l'atelier, ce fut une*

*expérience extraordinaire.*

*Maintenant que la session de base est terminée, je suis prête à vous offrir l'atelier intitulé <Photographie : l'art>. Dans cet atelier, vous expérimenterez différents types de photogra-*

*phies, vous explorerez l'aspect créatif de la photographie et votre créativité sera mise à l'épreuve. La première session débute le mardi 26 mars à l'École secondaire Trillium à 19h. Le coût de l'atelier est de 30\$ pour 8 sessions. Au plaisir de vous voir!*

## Superior East CFDC Local Initiatives

Throughout the past 12 years the Superior East CFDC has administered the Local Initiatives Fund (LIF) to the communities of Chapleau, Dubreuilville, Wawa, White River and First Nations as part of our Community Economic Development Initia-

tives. Funding for the LIF Program is provided by FedNor.

The LIF program supports regional and locally based community economic initiatives for non for profit organizations. Individual project contributions do not exceed

\$5,000 and are approved on a case-by-case basis by the CFDC Board of Directors.

In 2012, the Superior East CFDC supported a total of 12 community projects contributing a total of \$52,000. The total dollars leveraged with local partners for community projects totals over \$600,000.

The 2012 LIF recipients to this date were:

- The Regional Mayors Group
- The Regional Chiefs' Forum (2)
- Northeast Superior Forest Community
- The EDC of Wawa
- The Algoma Workforce Investment Committee
- Township of Chapleau Municipality of Wawa
- Kebsquasheshing Golf

- Club Township of Dubreuilville
- Michipicoten Golf Club
- Chapleau Northern Pike Ice Fishing Derby

We would like to invite non for profit organizations to submit applications since funding will still be available until the end of 2014. These funds are limited, and remember that this program is on a first come first serve basis.

If you have any questions or if you would like any additional information please feel free to contact our Community Development Officer, Mr. Cris Rouleau at 705-856-1105 ext 223 or 1-800-387-5776 or visit our website at [www.supe rioreast.on.ca](http://www.supe rioreast.on.ca).

**CHAPLEAU MINOR HOCKEY ASSOCIATION Annual Meeting**  
 Tuesday April 23, 2013 at 7:30 pm  
 Curling Rink Lounge

Amendments to the Constitution stating the section to be changed and the amended version, must be submitted by April 9 to CMHA, P.O. Box 1021.

Anyone interested in a Head Coach position must submit a letter of qualifications with 5 signatures of parents or current executive at the meeting. We will be accepting applications for the following teams: Anklebiters, Tykes, Novice House, Novice Rep, Atom House, Atom Rep, Peewee House, Peewee Rep, Bantam House, Bantam Rep and Midgets.

Election of Executive positions – Equipment Convenor, Public Relations, Chairperson & Finance Committee, Initiation Director are open for election. Nominations accepted at the meeting.

**Minor Hockey needs your support. Please plan to attend!**

WORKSHOP – ATELIER  
**Photography: The Art**  
 with Jennifer Ribout

Tuesday March 26th at 7 pm  
 École secondaire Trillium

explore creative aspect of photography - experiment with different types of photography - put your skills to the test exhibit your work to the community during the Gala

**Cost: \$30.00 (8 sessions)**  
 Information and reservations :  
 Centre culturel 705.864.1126  
 email:hemoninc@bellnet.ca

WORKSHOP – ATELIER  
**Photographie: L'Art**  
 avec Jennifer Ribout

le mardi 26 mars à 19h00  
 École secondaire Trillium

explorez l'aspect créatif de la photographie - expérimentez différents types de la photographie - mettez vos compétences à l'épreuve - exposez votre travail à la communauté lors du Gala...

**Coût: 30,00\$ (8 sessions)**  
 Information et reservation :  
 Centre culturel 705.864.1126  
 email:hemoninc@bellnet.ca



**Licensing: Standards, Legislation and Inspections**

In Ontario, anyone who cares for six or more unrelated children under the age of 10 must be licensed by the Ministry of Education. This includes home-based child care and centre-based child care.

Licensed child care programs must meet and maintain specific provincial standards set out in the *Day Nurseries Act*. These standards provide for the health, safety & developmental needs of the children.

At least once a year, staff of the Ministry of Education make unannounced inspections of all licensed child care programs to:

- make sure that provincial standards are being met
- issue and renew licences
- investigate complaints
- monitor operators who are having difficulty meeting licensing standards.

Inspection reports for all licensed child care programs are available on the licensed child care finder.

For more information please call  
**The Chapleau Child Care Centre**  
 at 705-864-1886  
 or stop by the Centre at 28 Golf Road

**NEWS FROM THE PARK BY Mike Mantha**

Provincial Member of Parliament for Algoma-Manitoulin



This break period at the Ontario Legislature is known as constituency week. This is a valuable week for members, as it allows time to travel to constituencies and meet with stakeholders and community members. This time is especially valuable for me as a Northern member, and representative of the vast riding of Algoma-Manitoulin.

In order for me to represent your voice

at Queen's Park, it is necessary to spend time throughout the riding in various communities listening to your concerns, and talking about the issues that matter to you and our communities. I always enjoy traveling the riding, and having the opportunity to meet with members of your communities.

I began the week by participating in a Funders' Forum for Mississauga First Nation, which was an

exciting opportunity to learn about upcoming projects. I had the honour to present two Ontario Trillium Foundation grant awards to deserving organizations that help make our communities a great place to live. I would like to congratulate the Chapleau Rotary Club who with their grant will be able to purchase equipment for the Girls Hockey Association of Chapleau, so that girls can safely participate and enhance their skills throughout the year. I would also like to congratulate the Espanola Ski Club who will be able to train new ski instructors and promote physical fitness in our community with their grant. These grants offer organizations the opportunity to continue building healthy and vibrant communities.

One of the most challenging aspects of representing such a diverse riding with many unique communities is trying to find ways to be everywhere at once. I take each opportunity and always look forward to constituency clinics across the riding. These clinics allow me to meet with constituents, hear your concerns and act on them. The week started in Manitowadge followed by Hornepayne and White River. The next day three clinics were held: one in Dubreuilville, one in Wawa, and finally one in Chapleau. The week finished with constituency clinics in Goulais River, Searchmont, and Prince Township.

At the clinics, we discussed a variety of issues including healthcare, education, municipal taxes, property assessments and ServiceOntario counters. These visits give me a chance to hear directly from community members about what issues are

important in each community. Understanding these issues is crucial to me being able to best represent the needs of Algoma-Manitoulin with I return to Queens Park.

We host constituency clinics in different communities across the riding, a few times each year, but when we are not in your community please do not hesitate to contact our constituency office. You can reach my constituency office by email at [mmantha-co@ndp.on.ca](mailto:mmantha-co@ndp.on.ca) or by phone at 705-461-9710/1-800-831-1899.



**Denise's**  
**Café**  
31 Birch St.  
705-864-2400

**EAT IN OR TAKE OUT**  
We serve breakfast & lunch daily **MON-FRI.**  
6:00 a.m. to 4:00 p.m.

**OPEN ON SATURDAYS FROM 7-12 BREAKFAST ONLY**

**For best selection place your order early for Easter Please order before Wednesday March 27, 2013**

**RATE PAYERS MEETING**

APRIL 2, 2013  
6:30 p.m.

**ROYAL CANADIAN LEGION**

CALL 705-864-2238 FOR MORE INFORMATION



**NOTICE TO TAX PAYERS**

The second instalment of the 2013 Interim Tax Billing is due March 28th, 2013.

A 1.25% penalty is imposed for late payment in addition to 1.25% per month per instalment on overdue accounts.

**AVIS AUX PAYEURS DE TAXE**

Le deuxième versement de la facturation intérim des impôts fonciers de 2013 est dû le 28 mars, 2013.

Une pénalité de 1.25% sera imposée aux paiements en retard en plus de 1.25% d'intérêt par mois au compte qui n'est pas payé à temps.

**L. Jones**  
Treasurer/Tax Collector  
Trésorier/Percepteur



We are currently seeking qualified candidates for the following position:

**1 FULL-TIME CARE COORDINATOR**

Minimum- Maximum Hourly Rate as per Collective Agreement  
\$29.36 - \$42.44

The Care Coordinator completes assessments to determine client eligibility and coordinates ongoing services with service providers to address client needs and ensure the most effective use of resources.

**Qualifications:**

- Registered Nurse in good standing with the College of Nurses of Ontario;
- Relevant experience working in a health care environment or community experience;
- In-depth knowledge of home health care and other community resources in the LHIN;
- Demonstrated case management, assessment, and interviewing skills;
- Good judgement, problem solving and decision making skill and ability;
- Ability to prioritize professional duties, manage multiple clients, and efficiently organize workload;
- Ability to accurately complete required documentation, reports, forms and recommendations;
- Strong communication, conflict resolution and advocacy skills;
- Strong interpersonal and collaboration skills;
- Leadership abilities required;
- Organization and time management skills;
- Ability to communicate information effectively through a variety of means;
- Effective listening, observation, and facilitation skills;
- Good understanding of the roles of other health care professionals affiliated with the NE CCAC;
- Knowledge of funding agencies available to support NE CCAC clients;
- Gerontology course would be an asset;
- Practical knowledge and understanding of relevant legislation, community and its services;
- Comprehensive knowledge of the standards of practice and professional guidelines set forth by the College of Nurses of Ontario;
- Competent in teamwork;
- Strong planning and coordination skills;
- Teaching, presentation, and public speaking skills;
- Must be resourceful, able to generate enthusiasm, take initiative and be willing to work under limited supervision;
- Working knowledge of computer software and Microsoft Office applications;
- Oral proficiency in English and French is required;
- Valid Ontario Driver's License.

**Hours:** Monday – Friday 8:30am-4:30pm

Interested applicants may submit résumés by March 29th, 2013 to:

**Human Resources**  
Services de santé de Chapleau Health Services  
6 Broomhead Road, P.O. Box 757  
Chapleau, Ontario  
P0M 1K0  
Tel: (705) 864-3061  
Email: [chapleauhr@sschs.ca](mailto:chapleauhr@sschs.ca)

We thank all applicants for their interest, but only those selected for an interview will be contacted. All applications received will be held strictly confidential. Cet avis est disponible en français.

# THE LOCAL MARKET PLACE

**CHADWIC HOME, FAMILY RESOURCE CENTRE.** Offers shelter, emotional support, and information for women and their children who are in crisis situations. We have a Toll Free Crisis Line which is staffed 24 hours a day. We can arrange for free transportation to the Centre for women who live in the Algoma/Chapleau area. We also offer support to women who live in the communities of Chapleau, White River, Dubreuilville, and Hornepayne through our Outreach Program. Our Outreach Worker travels to those communities to meet with women who need emotional support as well as information about their rights and options. If you need to speak with the Outreach Worker when she is in your community, you can call the Centre at any time to set up an appointment. You do not need to be a resident of the Centre in order to use our services. If you need someone to talk to or if you just need someone to listen, call our Toll Free Crisis line at 1-800-461-2242 or you can drop in at the Centre. We are here for you.

**ALCOHOLICS ANONYMOUS**  
Offers help to anyone who desires to stop drinking. Open discussion meeting on Sundays at 2:00 p.m. Trinity United Church basement. Telephone contacts: 864-2786

**ALCOHOLICS ANONYMOUS**  
Offers help to anyone who has the desire to stop using drugs/alcohol. Open discussion meeting on Saturday at 7:00 p.m. Pentecostal Church. Call 705-860-9769 for support.

**Alcoholics Anonymous (A.A.)** Open discussion meeting every Monday evening. Brunswick House First Nation Band office lounge 7pm. Narcotics Anonymous (N.A.) every Tuesday same place same time. NNADAP Worker @ 864-0174 info.

Societe Alzheimer Society meetings will be held at the Chapleau Hospital every 1st Monday of each month starting from 7:00 p.m. to 9:00 p.m.

## FOR SALE

**1998 Chevrolet Suburban 4x4, 6.5 l. Diesel 1500 with 2500 undercarriage. AM/FM CD** Recent front diff & transfer case overhaul, new front shocks and wheel bearings, new fuel lines, rim mounted winter tires. Newer fuel tank (4yrs) Needs Engine. 276,000 kms. \$1700.00 obo. As is. Call 705-864-0889.

**2010 Dodge Grand Caravan SE** rear entry converted passenger wheelchair van. Asking \$27,500.00 firm certified+4 mounted winter tires (studs). Worth over \$55,000.00 new. Call 705-864-0889 ask for Mario or leave a message.

## WANTED

To purchase winterized cottage or home with power for year round living near water within 30 km of Chapleau. Call 705-864-1870 and leave message.



**Have a Great Weekend**

**GET INVOLVED VISIT THE "Chapleau Community Engagement Group" ON FACEBOOK AND GIVE US YOUR OPINIONS.**



## Bruneau's INSTANT CASH REFUND REMBOURSEMENT INSTANTANÉ

- INSTANT CASH REFUND  
- ELECTRONIC FILING  
- FAMILY AND SENIOR DISCOUNTS  
- PICKUP AND DELIVERY FOR SENIORS  
- YEAR ROUND SERVICE

- REMBOURSEMENT INSTANTANÉ  
- RAPPORT D'IMPÔT ÉLECTRONIQUE  
- RABAIS FAMILIAL ET LIVRAISON POUR PERSONNES ÂGÉES  
- SERVICE À L'ANNÉE

## Tax Prep and E-File

JOHN BRUNEAU  
101 LANSDOWNE ST. S.

**705-864-0404**

RELIABLE - PROFESSIONAL - CONFIDENTIAL



## IT'S A PARTY

Rick Ruffo Turned 60

All friends and well wishers welcome

Three Mills, March 30th  
8:00 to 1:00  
See you there!



Choice Realty Inc. Brokerage\*  
\*Independently Owned and Operated. Trademarks owned by Century 21 Real Estate LLC used under license or authorized sub-license. © 2012 Century 21 Canada Limited Partnership.

**Lianne Vipond** SALES REPRESENTATIVE

## COMING SOON



Chiropractic Services at the Chapleau General Hospital. Dr. Paul Merlino DC will be providing chiropractic services in the physio therapy department of the Hospital every Friday from 10-7pm and Saturday Morning 8-12pm starting Friday April 5th, 2013.

Please call Dr. Merlino at 705-575-3365 to start booking your appointments.

## BODYLINES BY CRACK LTD.



**5 Licensed Bodymen Insurance Claims Windshield Repairs and Replacement State of the Art Frame**

**ALL WORK GUARANTEED PLEASE CALL 705-856-1406**

## BERRY'S FREIGHT SERVICES

TIMMINS - CHAPLEAU - TIMMINS  
MONDAY TO FRIDAY  
1lb. to 10,000 lbs.

FOR QUALITY SERVICES AT INEXPENSIVE PRICES  
GIVE US A CALL AT  
1-705-264-4334

## SLOMA CLEANERS

Drop off at Between Friends (Cedar Grove)  
Mon to. Fri. 8 am-noon and 1-4 pm

ALL ADS ARE ACCEPTED AT DENISE'S FLOWER SHOP  
DEADLINE FOR RECEIVING ADS IS WEDNESDAY 4:00 p.m.

## CLASSIFIED ADVERTISING RATES

Regular Classified Ads  
First 25 words or less \$6.25  
Each additional word \$0.16+GST  
No refunds on cancelled classified ads.

## NEW AT THE CHAPLEAU PUBLIC LIBRARY NEW BOOKS

Until the End of Time - Danielle Steel  
Next - Gordon Pinsent  
LemonAid - New Cars and Trucks 2013 - Phil Edmonston  
Money Rules - Gail Vaz-Oxlade

New to Chapleau Public Library  
Councilor/Library Board Member Doug Greig has compiled scans of all available newspapers and clippings of the Chapleau area since the late 1800s, over 39,000 pages! This collection is available for viewing at a dedicated computer station in the  
Library Monday - Thursday 12 - 7 and Friday 1 - 5.

## Alain Bouffard

Sales Representative  
61 Mission Road  
Wawa, Ontario, P0S 1K0  
Tel: 705-856-2394  
Fax: 705-856-4290  
alainbouffard@missionmotors.com



NEW & PRE OWNED VEHICLE SALES  
Goodwin Service Center  
WAWA MOTORS 24hr TOWING



## ALLEMANO & FITZGERALD

Barristers and Solicitors

**MICHAEL C. ALLEMANO, B.A., L.L.B.**

Certified by the Law Society as a Specialist in Real Estate Law

P.O. Box 10, 369 Queen St. E. Suite 103, Sault Ste. Marie, Ontario P6A 1Z4  
Phone (705) 942-0142  
Fax (705) 942-7188

P.O. Box 1700, 37 Broadway Avenue, Wawa, Ontario P0S 1K0  
Phone (705) 856-4970  
Fax (705) 856-2713

## Northern Lights Ford Sales

**Andrew G. McKenzie  
Travis Gendron**



Highway 17 North  
P.O. Box 1033  
Wawa, ON. P0S 1K0  
Business 705-856-2775  
Fax 705-856-4862

tgendron@northernlightsford.ca  
sales@northernlightsford.ca



**LABERGE VENNE & PARTNERS**  
PROFESSIONAL CORPORATION  
CHARTERED ACCOUNTANTS and CONSULTANTS  
COMPTABLES AGRÉÉS et CONSULTANTS

## Professional Services to Northern Ontario for 30 years

Financial Statements for Small Business & Corporations  
Tax Returns - Personal, Corporate and Trust/Estate  
Personal, Retirement, Estate Financial and Tax Planning Strategies  
Business Projections, Plans and Financial Proposals  
Computer Consulting  
ACCPAC and Quickbooks

1970 Paris Street, Sudbury, Ontario P3E 3C8  
(705) 523.0272 (800) 581.7510 www.lvpartners.ca



**LABERGE VENNE & PARTNERS**  
PROFESSIONAL CORPORATION  
CHARTERED ACCOUNTANTS and CONSULTANTS  
COMPTABLES AGRÉÉS et CONSULTANTS

## 30 ans de service professionnels pour les entreprises du Nord de l'Ontario

États financiers pour petites et moyennes entreprises et corporations  
Rapports d'impôts personnel, de compagnie et de fiducie  
Planification financière et fiscale personnelle et de compagnie  
Projections financières, plans d'affaires et propositions de financement  
Consultation en informatique  
ACCPAC et Quickbooks

1970 rue Paris, Sudbury, Ontario P3E 3C8  
(705) 523.0272 (800) 581.7510 www.lvpartners.ca



2 Featured Footlongs  
Every Sunday in March  
\$5 Dollars EACH

Your choice of Barbequed Rib or Roasted Chicken

Bring coupon in to enter draw for food prizes  
OFFER GOOD AT Name: \_\_\_\_\_  
Subway Chapleau Tel: \_\_\_\_\_



# Police Report

## Chapleau Spring Soccer League

On March 1, 2013 Superior East OPP in Chapleau were dispatched to a report of a Domestic Assault at a local residence. A female at the residence reported being assaulted by her

former boyfriend and that he had since left the residence. The male had also caused mischief to the residence by punching holes in the wall and breaking the complainant's cell phone. Further investigation into this matter has since revealed that

previous incidents, including common and sexual assaults and mischief had occurred over a period of time. These incidents allegedly occurred involving multiple female victims.

As a result of investigation conducted by Chapleau and South Porcupine officers, a 19 year old Mattagami First Nations male has been arrested and charged with several criminal infractions including:- 4 counts of common assault; 22 counts of Breach of Probation; 3 counts of sexual Assault; 3 counts mischief; 1 count theft under \$5000.00; 1 count fraud under \$5000.00; 1 count possess property obtained by Crime.

The male is presently being held in custody awaiting a Bail Hearing in Timmins. The name of

the accused is not being released to protect the identity of the victims.

If you have any information regarding any criminal activity, call 705-942-7867 or 1-800-222-8477 (TIPS); submit an e-tip from The Crime Stopper's web-site at [www.saultcrimestoppers.com](http://www.saultcrimestoppers.com) or send a text to keyword SSM to the short code number 274637.

The Chapleau Spring 2013 Soccer League would like to announce that the registration deadline is approaching. For your convenience, you can now pick up a Spring Soccer Registration sign up sheet at the Chapleau Village Shops, or at the Chapleau OPP Detachment. The cost is \$40 per player, coaches and volunteers always welcome!! Please drop

off completed Sign-up sheets to the Chapleau OPP Detachment with the respective players health card. The Registration deadline is April 15th, 2013!!!

Please do not hesitate to contact Soccer Coordinators Jason Dias or Laura Matthews at [Jason.dias@ontario.ca](mailto:Jason.dias@ontario.ca) or [laura.matthews@ontario.ca](mailto:laura.matthews@ontario.ca) with any questions or concerns.

**SUPERIOR EAST/SUPÉRIEUR EST**  
Community Futures Development Corporation  
Société d'aide au développement des collectivités

**Attention: Are you a Small Business Owner? Do you require financing? Thinking of starting a business?**  
The staff of the Superior East Community Futures Development Corporation will be in Chapleau on March 28, 2013. The CFDC offers small business loans and counselling to current small business owners or individuals looking at starting a business. **To make an appointment to discuss financing options, please call 1-800-387-5776, ext. 221.**

**Attention: Êtes-vous propriétaire d'une petite entreprise? Êtes-vous en besoin d'aide financière? Vous-voulez vous partir en affaires?**  
Le personnel de la Société d'aide au développement des collectivités Supérieur Est sera à Chapleau le 28 mars, 2013. La SADC offre des prêts financiers et des services-conseils aux propriétaires actuel(le)s de petites entreprises et aux individu(e)s intéressé(e)s à se partir en affaire. **Pour prendre rendez-vous et discuter de vos besoins d'aide financière ou pour obtenir des services-conseils, communiquez avec nous au 1-800-387-5776, poste 221.**

Canada FedNor

**AVIS**

Probe Mines ltée invite les citoyens de Chapleau à une réunion du Conseil municipal de Chapleau, où la Compagnie fournira de l'information sur son projet de prospection d'or au lac Borden. Une brève présentation sera suivie d'une période de questions.

La réunion se tiendra lundi, le 25 mars 2013 à 18 h 30 au Centre récréatif de Chapleau, situé au 4 Maple Street, Chapleau, Ontario.

**NOTICE**

Probe Mines Limited would like to invite the people of Chapleau to a Chapleau Township Council meeting, at which the Company will present information about its gold exploration project at Borden Lake. A brief presentation will be followed by a question and answer period.

The meeting will be held on Monday March 25, 2013 from 6:30 PM-8:30 PM at the Chapleau Recreation Centre at 4 Maple Street, Chapleau, Ontario.

**PROBE**  
MINES LIMITED

**JUST IN TIME FOR EASTER**  
Beautiful Selection of DRESSES  
by LIBRA, SOFTWORKS, MICHAEL TYLER  
ALL MADE IN CANADA  
from \$34.98

For the Chocolate LOVER Assorted Laura Secord

Assorted Napkins for your Easter Table **30% OFF**

Children's Rubber Boots **\$9.98**  
Adult & Children's Winter Boots all at **\$19.98** or **\$39.98**

Point Zero for her Leatherette Jacket orange or yellow from **\$82.98**

Selected Men's Shirts **1/2 PRICE**

An Easter Surprise! Roots Watches **30% OFF**

Bulova Watches **20% OFF**

Selected STANFIELD Briefs & T-Shirts **40% OFF**

**Great Business Opportunity**  
Owners want to retire

**A well established corner store business as well as the Starlite Building.**

**Please see Diane at the corner store for more details**

Other Little Things that we do!  
Jewellery & Watch Repairs - Watch Battery Changes - Clothing Alterations - Helium Balloons - Engraving  
Gift Certificates - Donation Cards - Gift Wrapping - Tuxedo rentals - Office Supplies - Computer Repairs

**Chapleau Village Shops**  
WORKWEAR • FASHIONS • JEWELLERY • GIFTWARE  
**864-1114**

**Sears**  
HOMETOWN STORE 864-1852