

**Talk about good coffee!**  
Miss Muggins Coffee and Fresh Donuts

# CHAPLEAU EXPRESS

Vol. 17, Issue 25, March 2, 2013

**PIZZA HUT & KFC**  
There's a Reason We're Number 1  
"0 TRANS FAT"  
864-0911



## Golden weekend for Chapleau teams



By Vicki Langelier

**T**hey did it again! Congratulations to the Chapleau Pee Wee Chicks, the 2013 Sudbury Snowflake Challenge Champions. The girls faced some stiff competition but refused to lose. They were unbeaten all weekend and won the championship game 7-0 over the Sudbury Bradley Automotive Barracudas. Congratulations girls, we are all so

proud of you."

Left to right Sara Dipasquale, Mark Dipasquale (coach), Jenna Rioux, Brianna Gervais, Sage Rousseau, Molly McKee, Tammy Lefebvre, Lindsey Hawthorne, Stacey Lefebvre, Olivia Hamill, Brooke Doyon, Jenna Gervais, Chuck Orton (assistant coach), Vicki Langelier (Trainer), Emma Orton, Hannah Barlow

## Peewees steal the show at Extravaganza

By Dan Williams

**T**he Chapleau Minor Hockey Pee Wee Huskies stole the show at the Soo Pee Wee Extravaganza Tournament during the week end of February 22nd to 24th. The 18-member team battled through 3 round robin games on Friday and Saturday with wins in

each game and scores of 7-1, 1-0 and 5-0. The determination and 100% commitment from each player during round robin play helped guarantee a place in the Sunday morning semi-finals.

With outstanding net minding from tender Sebastien Sylvestre, the Huskies ended the third period of the semi-final game in a 2-2 tie with the Onaping Falls Huskies. At 1:41 of the overtime period, Tanner Chisholm (center) sniped the back of the net which secured a place in the final game that was set for 3:00 p.m. Victory in this semi-final game also confirmed once and for all that the Chapleau Huskies are

the only true Huskies in the NOHA.

In the final game, our Pee Wees faced-off against the Valley East Renegades who also arrived with four wins in their favour up to that point during the week end. Tough battles through end to end play found our Huskies tied again (0-0) at the end of three periods and into the fourth. Our golden moment occurred at 1:02 of the fifth period when Tammy Lefebvre (Team Captain) back-handed the top corner over the Renegade goalie and sealed the deal for the Pee Wee House League Division Champions.

Congratulations to all players who



Back row (l-r) Sheldon Scott, Rob Noel (coach), Claire Binette, Brittany Moreau, Tanner Chisholm, Tammy Lefebvre, Alex Tremblay, Johnathon Bernier, James Morin, Nigel Neshawabin, Kaleb Vallee, Tyson Noel, Ben Williams, Kendra Schuurman, Dan Williams (manager), JJ Vallee (coach), Michel Sylvestre (Head Coach). Front row - Fred Larocque, Amadeus Neshawabin, Sebastien Sylvestre, Emma Orton and Alex Turcotte

proved that hard work pays off and also to coaching staff (Michel Sylvestre, Rob Noel and JJ Vallee) who mentored and guided

the players to victory during the week end.

Big thanks also to parents and family who show commitment to teams in all

divisions when bringing their players out of town for tournaments and games throughout the year; without you we couldn't succeed.



### Long Term Forecast

Friday	High -10	Low -21	
Saturday	High -10	Low -21	
Sunday	High -9	Low -20	
Monday	High -7	Low -18	
Tuesday	High -7	Low -17	
Wednesday	High -5	Low -15	

We are loving FEBRUARY AT MISSION MOTORS  
This month PURCHASE A TRUCK AND SAVE UP TO

**\$15000.00**

Collect up to 3000 air miles and receive 0% financing or lease on select models.

Deal of the month 2013 **SPORTY** Silverado regular cab short box 4x4 with \$4000 in added accessories for only \$177 biweekly plus taxes O.A.C. with zero down sweet deal for limited time!



61 Mission Road, Wawa, ON, P0S 1K0  
Phone (705) 856-2394

# Letters to the Editor

Dear Editor;

I am writing in connection with some on-going and very interesting and important Chapleau historical research.

L o u i s e (Tremblay) Etter has compiled a list of fifty children who died while attending the St. John's Residential Schools in Chapleau. Her list identifies the children, their ages, their hometowns, their parents, the causes of their deaths and their burial places.

Ms. Etter put

together her list by meticulously combing through death records for the Province of Ontario from 1915 to 1938.

Unfortunately, the research begs more questions than it answers.

For example, the original school was located along the Back River behind the sewage disposal plant in an area that was, in my youth, called "Pellow's Field". It operated from 1907/08 to 1923 when it was sold for use as a private



A tin marker, likely issued by the Department of Indian Affairs, marks the resting place of a student from the St Joseph's Indian residential school in Chapleau, Ont. New research has found at least 3,000 children are now known to have died during attendance at Canada's disgraced Indian residential schools. (Canadian Press)

residence and the "new" school opened across from the old power house. All of the information Louise has gathered must lead one to conclude that there had to be a cemetery or burial ground on or near the location of the first school. One reputable source describes seven deaths at the school in 1908 – one fifth of the total student population. Other than that one reference, nothing has yet been found about deaths that most certainly had to have occurred between 1909 and 1915. I have never heard anyone speak of a cemetery on or near the site of the original school, nor did I ever come across any evidence of one when I played over there with many of the kids with whom I grew up. Louise Etter's research indicates that approximately 20 children died between 1915 and 1923 and it seems unreasonable to conclude that they

were buried on the grounds of the "new" school or in the old Protestant cemetery on Birch Street.

It is well known that there is one cemetery on the grounds of the "new" school which closed in 1948. With some difficulty it can be found along the snow mobile trail near the Provincial Police station. And there is a distinct possibility that there is another long forgotten burial site on the same property. It may be under a residence or in somebody's back yard. There is no way of knowing how many children are buried there, who they are, when they died or the causes of their deaths.

The cemeteries in the death records are, for reasons unknown, variously referred to as "School Cemetery", "Indian Cemetery", "Chapleau", "Chapleau Reserve", "Chapleau Indian

**The Chapleau Express**  
 P.O. Box 457, Chapleau (Ont.) P0M 1K0  
 Telephone - Fax : 705-864-2579  
 e-mail : chaexpress@sympatico.ca  
 Published every Saturday/Sunday  
 Deadline for receiving ads is Wednesday at 4 p.m.  
 The Chapleau Express is delivered free of charge to every household each Saturday. If you have any comments, please feel free to contact us. Subscriptions: \$80.00 per year (Canada) \$160.00 U.S per year (U.S.A). Canadian Publications Products Sales Agreement #30183799  
 The publisher or editor of The Chapleau Express reserves the right to edit or withhold from publication any letter for any reason whatsoever. Once received, all letters become the possession of The Chapleau Express. Letters reflect the opinion of the author, not necessarily that of The Chapleau Express or its staff.

## GOING TO CHURCH

<p><b>Catholic Church</b>                  SACRED-HEART OF JESUS PARISH                  PAROISSE SACRÉ-COEUR DE JÉSUS</p> <p>26 Lorne Street North                  OFFICE- 21 Lansdowne St.N.                  864-0747                  New Schedule Effective Nov. 7/09                  Nouvel horaire à compter du 7 nov/09                  Sat/sam 7 p.m. (E or F)                  Sun/dim 9:30 a.m. (F or E)                  Weekdays/Semaine lun-ven 9:30 a.m.                  Wed/Mer (Hosp) 11:30 a.m.                  Fr. Sébastien Groleau</p> <p><b>ST. JEAN DE BRÉBEUF (Sultan)</b></p> <p>Liturgy of the Word                  Liturgie de la parole                  Mass 3rd Sunday                  Messe 3e dim 12:00 Noon (B)                  Permanent Deacon                  Diacre Permanent                  Ted Castilloux</p> <p><b>Diocese of Moosonee Anglican Church of Canada</b></p> <p><b>ST. JOHN'S CHURCH</b>                  4 Pine Street West                  705-235-5556                  Sunday Service                  10:30 a.m.                  The Rev. Iris Montague</p> <p><b>ST. MARY'S ANGLICAN CATHOLIC CHURCH</b></p> <p>78 Devonshire Street                  864-0909                  Sunday Service 10 a.m.</p>	<p><b>CHAPLEAU PENTECOSTAL CHURCH</b></p> <p>9 Elm Street (P.A.O.C.)                  864-0828                  Sunday 10:30 a.m. &amp; 7 p.m. Wed.                  Family Night 7-8 p.m.                  Fri. Story Hour                  3:30-4:30 p.m.                  Pastor Dan Lee</p> <p><b>TRINITY UNITED CHURCH</b></p> <p>Corner of Beech and Lorne                  864-1221                  Sunday Service and Sunday School 11:00 a.m.                  Anna Chikoski                  Soup Kettle every 2nd Wednesday of the month                  www.angelfire.com/on/trinityuc</p> <p><b>OUR LADY OF SEVEN SORROWS PARISH</b>                  PAROISSE NOTRE-DAME-DES-SEPT-DOULEURS (Foleyet)</p> <p>Liturgy of the Word                  Liturgie de la Parole                  Mass 2nd-4th Sunday/                  Messe 2e-4e dim 12:00 Noon (B)</p> <p><b>COMMUNITY BIBLE CHAPEL</b>                  Corner of King and Maple                  864-0470                  Communion Service 9:30                  Family Bible Hour 11 a.m.                  Including Sunday School Evening Bible Study and Ladies Bible Study during the week                  Transportation available                  Al Tremblay</p>
---	---

**RBC Dominion Securities Inc.**

**Anthony Pucci, B.Comm., FMA, Vice President**

Anthony will be pleased to advise you on a wide variety of investment services:

- Personalized retirement planning
- Tax-minimization strategies
- Investment portfolio analysis
- Stocks, bonds, GICs and mutual funds

 Anthony's next visit to RBC Royal Bank Chapleau Branch will be on **Tuesday, March 5th, 2013**  
 Call 1-800-557-2396 for a complimentary appointment.

*Professional Wealth Management Since 1901*  **RBC Wealth Management Dominion Securities**

RBC Dominion Securities Inc.\* and Royal Bank of Canada are separate corporate entities which are affiliated. \*Member-Canadian Investor Protection Fund. RBC Dominion Securities Inc. is a member company of RBC Wealth Management, a business segment of Royal Bank of Canada. ©Registered trademarks of Royal Bank of Canada. Used under licence. © 2012 Royal Bank of Canada. All rights reserved.

## OBITUARY

### Theresa Landry (nee Gour)

Theresa Landry (nee Gour) was born on September 13, 1930 in St. Charles, Ontario. She died on December 24, 2012 at Chapleau Health Services at the age of 82. A funeral service was held on January 7, 2013 at 1 p.m. at Chapleau Pentecostal Church. Thanks to Gilmartin Funeral Home, the hospital staff who cared for Theresa and friends.

Cemetery", "Indian School Cemetery", "Chapleau Protestant Cemetery" and "Missanabie". Again, other than Missanabie, there seems to be no apparently plausible explanation for the different references. These irregularities may simply be careless reporting or the sloppy record keeping of a local doctor who was a notorious drunk. Surely there were not that many cemeteries. Regardless, I commend this research to your readers. It is very important Chapleau history and it can be found on Louise Etter's Facebook page. Louise and I would both be very happy to hear from anyone with comments, questions or additional information.

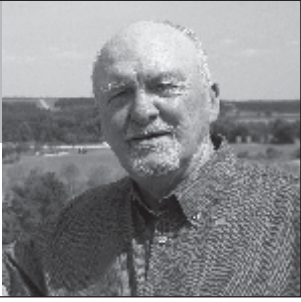
Bill McLeod  
 15 Eden Point Dr.  
 SUDBURY, ON.  
 P3E 4V6

<h1>EMPLOYMENT ONTARIO</h1>	<p>Centre d'emploi de                  Chapleau Employment                  Resource Centre</p> <h1>Ontario</h1>	<h1>EMPLOI ONTARIO</h1>
<p>Come and see us at                  12 Birch Street E.                  Chapleau  <b>705-864-0430</b>                  Everyone is welcome</p>	<ul style="list-style-type: none"> <li>- Skills Training for high demand jobs</li> <li>- Financial support to go back to school</li> <li>- Resume's &amp; cover letters</li> <li>- Incentives for employers</li> <li>- use of computers, printers, and fax</li> <li>- Referral to SECOND CAREER</li> </ul>	<ul style="list-style-type: none"> <li>- Formation professionnelle pour un emploi a forte demande</li> <li>- L'aide financière pour le retour a l'école</li> <li>- Résumé et lettre de motivation</li> <li>- Récompense pour employeurs</li> <li>- Utilise nos ordinateurs, imprimante et Télécopieurs</li> <li>- Référence a DEUXIEME CARRIERE</li> </ul> <p style="text-align: right;">Venez nous voir au                  12 rue Birch E.,                  Chapleau  <b>705-864-0430</b>                  Tous sont bienvenus</p>
<p>Conseil des Services du District de  <b>Manitoulin-Sudbury</b>                  District Services Board</p> 		

# Mileage 615.1 becomes Chapleau as Canadian Pacific Railway construction makes impossible dream a reality

## Chapleau Moments

by  
Michael J. Morris



Just imagine for a moment that you were moving to Chapleau as the Canadian Pacific Railway tracks were nearing Mileage 615.1.

The train stops seven miles east of the fledgling community, and you are told that is the end of the road. Pack up your belongings and children and walk the rest of the way pushing a cart that is provided.

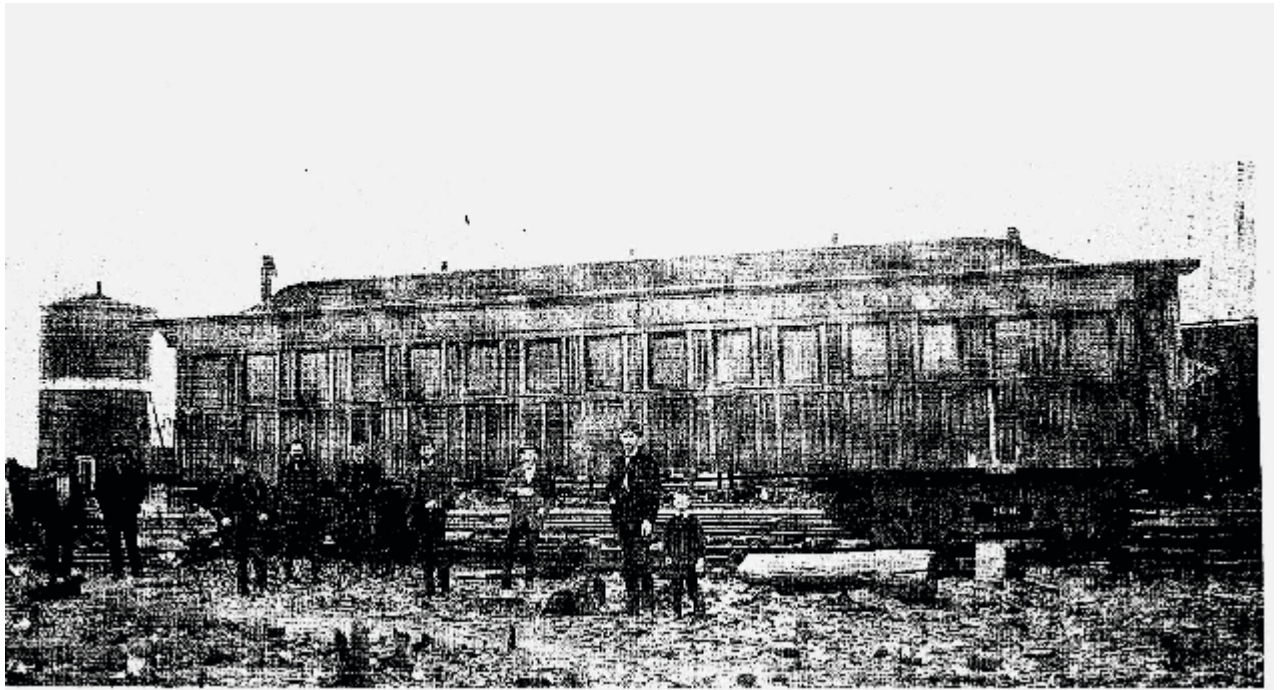
Or, perhaps, you might have enjoyed the experience of walking the entire CPR line from Sudbury to Chapleau, and maybe even as far as Port Arthur, a distance of about 2,000

miles.

Maybe you were coming to Chapleau from James Bay by canoe with some family members walking along the shore as there was only limited room in the small crafts.

Just imagine! You have learned that Sir John A. Macdonald's government had decided to turn the impossible dream into a reality. Across this vast land called Canada, a nation only since 1867, a transcontinental railway was being built to link it from sea to sea.

The Canadian Pacific Railway would stretch from settled



First CPR station at Chapleau 1885. Ian Macdonald collection

sections of the young nation, through the forests, muskeg and rock of Northern Ontario; across the flat lands of the Prairies; through the Rocky Mountains into the valleys of British Columbia to the Pacific Ocean.

Welcome to Chapleau. In 1885,

instructions were given to put a spur for a car to be set out at Mileage 615.1 on the CPR line, which was in the centre of the new community of Chapleau.

This car became the first station, office building and train dispatcher's office. In no time, or so

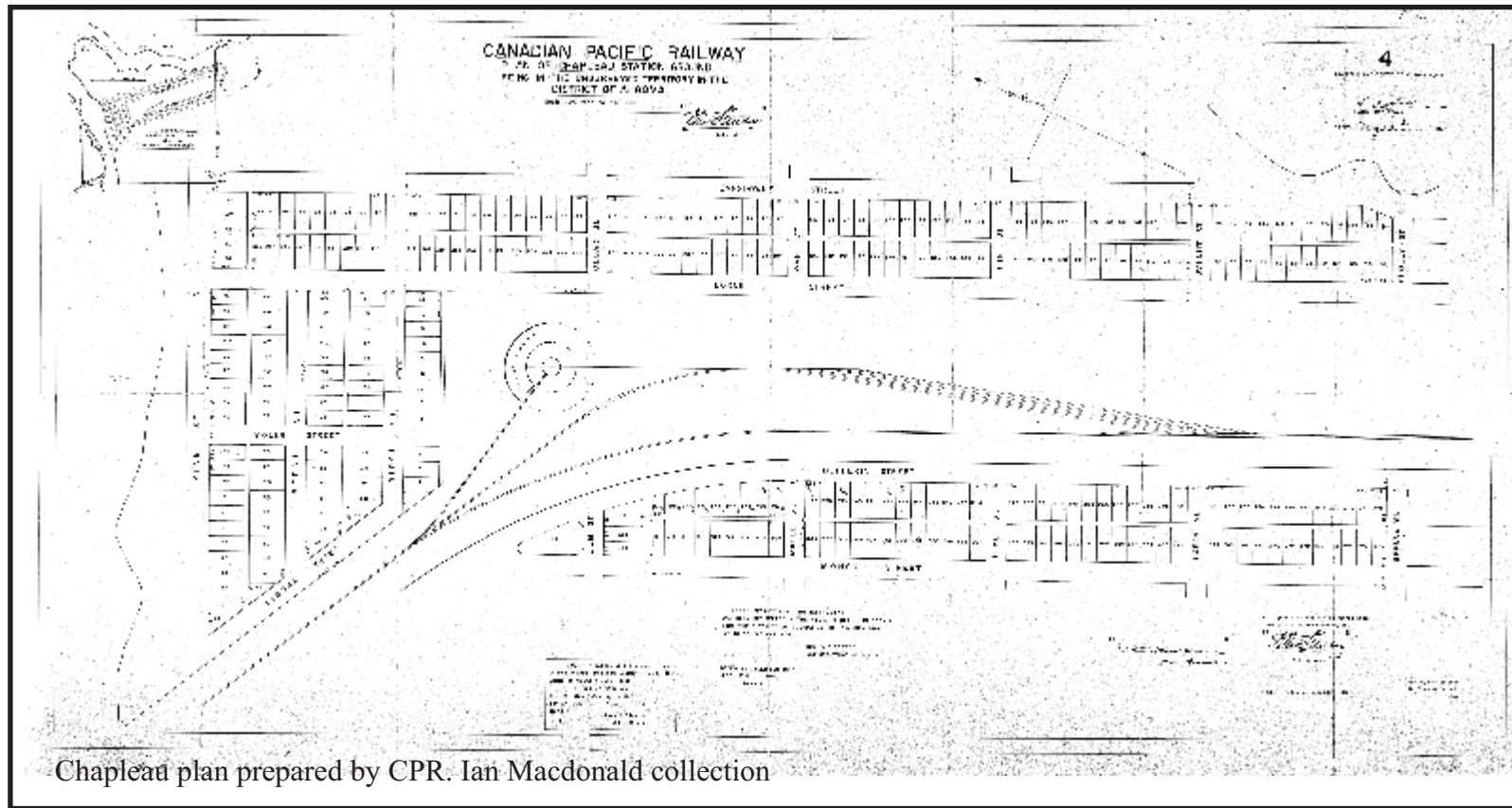
it seemed, a round-house with turntable and water tank had been built.

A station and office building were under construction and Chapleau had become a town made up of surplus boxcars and tents with a population of about 400 people, ninety-five percent of

them men as 1886 began.

Reports from the time indicate that the first winter was very strenuous for the early citizens of the community. That is really an understatement as they had left their old way of life to build a new one far from any comforts they might have known. Apparently it was also one of those bitterly cold winters, to which Chapleau citizens became accustomed, and disease was also rampant.

Lambert Lafrance arrived in Chapleau in 1885 and was joined by his wife Adele Roy and children in 1886. According to a biography of Father Albert Burns, their grandson, the train stopped seven miles east of Chapleau and they had to walk the rest of the way pushing a cart with all their worldly belongings. **Cont'd on P.9**



Chapleau plan prepared by CPR. Ian Macdonald collection



**Ontario**  
Licenced  
Motor Vehicle  
Inspection Station





**Chapleau Cree Auto/Truck**  
Monday - Friday  
8:30 a.m - 4:30 p.m.  
"Preventive Maintenance keeps you on the road"  
FOX LAKE RESERVE

**CALL**  
**864-9090**  
for an  
appointment

# Increased road closures go hand-in-hand with privatization

Today in question period, Timmins-James Bay MPP Gilles Bisson called on Premier Wynne to explain the government decision to further privatize snow removal and road maintenance services.

“Highway conditions in northern Ontario and across this province in winter are atrocious. We’re seeing more and more road closures; we’re

seeing more and more accidents. Why? Because highways are not being maintained to the standard they should,” said Bisson.

“We know that the Conservatives started winter road maintenance privatization; your government accelerated it. And what’s worse is you have even privatized the patrolling of highways as to how we dispatch salt trucks and

plow trucks,” explained Bisson, asking, “Why did the government privatize that section of the work? Because clearly now, we’re not getting the maintenance that we need on our highways.”

Many Ontarians believe that privatized road maintenance has led to

an increase in road closures, particularly in the North. Last winter, NDP MPPs ran a road closure hotline to track closures across the North.

“The fact that the minister is not aware that our highways are in bad condition this winter is quite frankly surprising,” said Bisson,

referring to Minister of Transportation Glen Murray. “It is not as if you have not been without warning. It has been reported in the news for the last number of months, the same thing this year as it was last year.”

Bisson continued to push the Premier, asking, “Why did your government go

ahead and privatize the patrolling of the highways that was done by the MTO? Because without those patrols, we are not dispatching sand, salt and plow trucks in the way that we should, and as a result, our highways are in terrible condition. Why did you privatize it?”

## Les conseils scolaires approuvent le calendrier scolaire 2013-2014

Le Conseil scolaire catholique du Nouvel-Ontario (CSCNO), le Conseil scolaire public du Grand Nord de l'Ontario (CSPGNO), Rainbow District School Board et Sudbury Catholic District School Board ont approuvé le calendrier scolaire 2013-2014.

Les quatre conseils scolaires collaborent depuis longtemps à la création d'un calendrier commun qui facilite la coordination des services, notamment le transport scolaire. Chaque conseil a suivi son propre processus de consultation avant d'adopter le calendrier qui sera désormais acheminé pour approbation au ministère de l'Éducation.

Toutes les écoles francophones et anglophones du Grand Sudbury, d'Española, de l'Île Manitoulin, de Shining Tree et de Sudbury-Est (y compris Warren, Markstay, Noëlville, St-Charles et Killarney) utiliseront le même calendrier scolaire 2013-2014.

Le calendrier s'appliquera également aux écoles du CSCNO et du CSPGNO à Elliot Lake, Blind River, Spanish, Sault-Ste-Marie, Wawa, Chapleau, Dubreuilville et Hornepayne. Les conseils scolaires Huron-Superior Catholic District School Board et Algoma District School Board

ont également procédé à l'approbation du calendrier scolaire 2013-2014 lors d'une récente réunion.

L'année scolaire commencera par une journée pédagogique le mardi 3 septembre 2013, soit la journée qui suivra la Fête du Travail. La première journée de classe pour tous les élèves sera le mercredi 4 septembre 2013. Veuillez noter qu'il n'y aura pas de départ hâtif ce jour-là.

Outre le premier jour d'école, le calendrier comporte les dates des vacances de Noël et du mois de mars, les jours fériés, les dates des examens du palier secondaire et les journées pédagogiques pour 2013-2014.

**Aperçu de l'année scolaire 2013-2014**  
**Écoles élémentaires et secondaires**

Fête du Travail  
Le 2 septembre 2013  
Premier jour d'école des élèves: Le 4 septembre 2013 – aucun départ hâtif ; Action de grâce: Le 14 octobre 2013; Vacances de Noël Du 23 décembre 2013 au 3 janvier 2014; Jour de la Famille Le 17 février 2014; Congé d'hiver Du 10 au 14 mars 2014; Vendredi saint Le 18 avril 2014; Lundi de Pâques Le 21 avril 2014; Fête de la Reine Le 19 mai 2014; Dernier jour d'école des élèves Le 27 juin 2014 – aucun départ hâtif ; Premier semestre (secondaire) Du 3 septembre 2013 au 31 janvier 2014; Deuxième semestre

(secondaire) Du 3 février 2014 au 27 juin 2014; Dates des examens (écoles secondaires); Du 24 au 30 janvier 2014 (5 jours)  
Du 23 au 27 juin 2014 (5 jours).

**Journées pédagogiques**

L'année scolaire 2013-2014 aura six journées pédagogiques dont trois comprendront des activités de perfectionnement professionnel. Les dates de ces journées sont les suivantes :

**Le 3 septembre 2013**  
**Le 11 octobre 2013**  
**Le 20 décembre 2013**  
**Le 31 janvier 2014**  
**Le 7 mars 2014**  
**Le 13 juin 2014**

### CHAPLEAU HIGH SCHOOL



### PARENT'S NIGHT



**Wednesday, March 20, 2013**  
**from 7:00 p.m. to 9:00 p.m.**

Your daughter/son's Progress Report will be given to you at this time.

All parents are welcome to discuss their child's development.

Support your child by attending this important event.

Contact the school at 705-864-1452 to make an appointment.



### Check it Out!!

**The Chapleau Child Care Centre de Garde d'Enfants**

is offering a weekly

**Preschool French Immersion Program**

for children from 2.5 – 5 years of age  
(morning sessions – Tuesdays, Wednesdays and Thursdays)

For more information please call  
705-864-1886

or stop by the Centre at 28 Golf Road

## Great Business Opportunity

Owners want to retire

**A well established corner store business as well as the Starlite Building.**

**Please see Diane at the corner store for more details**

# 2013 Carnival Bonspiel

**By Kevin Lindquist**

Carnival weekend was a busy one for the Chapleau Curling Club. A "hipped" up group of 18 teams took to the ice Friday evening, curling to 11:30 pm! Hearty curlers were back on the ice for 8:00 am

Saturday and continued until the championship games completed at 11:30 pm. Tom O'Shaughnessy's team took the A Event, Patrick Brousseau's team the B Event, and Paul Bernier's rink won the C Event.

The theme for

this year's Carnival bonspiel was Hippies, and the number and variety of costumes didn't disappoint. Prizes were awarded to the best individual costume, Kyle St. Amand, the best team costume, Kevin Lindquist's rink, and the

Spirit award to the team who stayed in costume for the entire spiel, Michel Sylvestre's rink.

There is only one more bonspiel this curling season; the Shamrock spiel on March 15 & 16. Prizes will be awarded for costumes so put on

your best St. Patrick Day colours! You can sign up at the club, or call Kevin Lindquist at 864-1398. The curling club will also be hosting another Friday night Social on March 8th. This is an informal pick-up evening of curling and a great

opportunity for new curlers. Brooms, extenders, and lessons available!

The Chapleau Curling Club wishes to thank Collins Home Hardware for their Home Card donations to our Carnival prizes. Thanks Doug & Josh!



**"A" Event Winners: Bonnie & Tom O'Shaughnessy, Bruce & Nicolle Schuurman.**



**"B" Event Winners: Pat Brousseau, Kevin Monahan, Chantal Servant, Kyle Besnier**



**"C" Event Winners: Chad & Donna Byce, Lisi & Paul Bernier.**



**Best Team Costume: Kevin Lindquist, Brenda Lindquist, Shelly & Pierre Bernier.**



**Spirit Award: Nancy Sylvestre, Dan Williams, Renee Chiasson, Michel Sylvestre.**



**Carnival Hippies 2013.**

# Hot Shots - Photo Contest



First prize winner was Rolf Fuchs. Richard Beaudoin presents a cheque in the amount of \$100 to Lynne Fuchs.

**By Micheal Levesque**

The Chapleau Leisure and Cultural Services Committee is quite pleased with the participation in the First Winter Carnival Photo Contest. We received 37 submis-

sions depicting local winter scenery or winter activities. Photos ranged from frolicking pets to exploring children to a blue snowman to an array of scenic shots.

First place

winner (\$100.00) is Rolf Fuchs and the second place (\$50.00) winner is Nancy Sylvestre. Honourable mentions go to Julie Hayes-Ruffo and Charlsie Rheume. All four participants



Richard Beaudoin presents a cheque of \$50 to second prize winner Nancy Sylvestre.

received a matte-framed reproduction of their prize photo.

A composite display board of all entries was placed both in the arena community hall and the curling club during the carnival. Some expressed disappointment, having missed the display. The Committee is working on a full exhibit of all photos.

The photos are available on youtube at [http://www.youtube.com/watch?feature=player\\_detailpage&v=JzRHc\\_zhKtY](http://www.youtube.com/watch?feature=player_detailpage&v=JzRHc_zhKtY) or search for "2013 Carnival photo Contest entries".

A special thanks to Mario Lafreniere for The Chapleau Express sponsorship of this event, not only for the cash prizes but also for

the extra efforts with the composite display board and the framed matte reproductions. Thanks also to the Chapleau Public Library for its co-operation.

The participa-

tion level and the positive public response have convinced the Leisure Committee that local photography and recognition must be a part of future community celebrations.



# Chapleau Cree holds 19th Kids Fish Derby

By Brian Edwards

On February 17th, the Chapleau Cree First Nation hosted it's 19th Annual Kids Fish Derby as part of the Chapleau Winter Carnival activities. The weather was agreeable and all the kids and parents enjoyed a day in the sun searching for the every elusive winning fish. With over 30 children aged 2 to 15 in attendance we were very confident that fish would be flying out of the lake. Unfortunately the day

proved to be a skunk and although a few bites were reported....no fish were caught. Better luck next year. Again, with the generous donations of our supporters every participant was able to receive a prize. Chi-Miigwetch to all the participants and their parents for taking the time to attend and chaperone. The Fox Lake Reserve is honoured to be host to this annual event and hope to see you all out again next year.



Chapleau Cree First Nation Chief Keeter Corston and Councillor Marjorie Lee with some of the children participating in the 19th Annual Fox Lake Kids Fish Derby.

# ServiceOntario cuts unfairly target North

Algom a - Manitoulin MPP Michael Mantha made the following statement in the legislature yesterday after the government made further cuts to ServiceOntario hours and jobs in the community and throughout the

North. "Northerners who rely on these counters in Manitowadge, Wawa, Chapleau, along the North Shore and on Manitoulin Island will now have their hours of operation cut in half. "This govern-

ment claims that the effected sites were low-volume but of these 22 sites 21 of them are located in Northern Ontario, once again denying Northerners the same access to these services in comparison to the rest of the province. These cuts will

have a negative impact on local businesses, local economy as well as employees who will experience reduced hours or job loss. "ServiceOntario generates \$2.7 billion annually in revenue for the province, on an

operating budget of only \$270 million. With these large revenues, why are Northerners made to suffer yet again. "The government made its intent to privatize Service Ontario clear last

February, something that is cause for great concern. We know all too well what can happen with privatization. "Northerners are not asking for more but will certainly not accept less."

# Free Throw Winner



Lorry Martel, winner of the Knights of Columbus Free Throw competition in the Timmins District. Gagnante du Lancer Libre du district de Timmins des Chevaliers de Colomb.



Dr. Amanda J.  
**FORTIN**  
FRCS(C), MSc

AESTHETIC & RECONSTRUCTIVE PLASTIC SURGEON

## A Feminine Approach to Plastic Surgery

**A**fter training extensively across Canada and abroad, Dr. Amanda Fortin began her career as a surgeon and Assistant Professor in the Division of Plastic Surgery at the University of Western Ontario in 2007. Dr. Fortin returned to her roots in the north in 2011 to open her practice and begin her family. Her office is located on the 1<sup>st</sup> floor of Health Sciences North in Sudbury and **she is the only female plastic surgeon in Northern Ontario.** She has a special interest in breast surgery, encompassing both cosmetic and reconstructive aspects.



- Mommy Makeover
- Breast Surgery
- Body Contouring
- Facial Plastic Surgery
- Botox & Juvederm

Dr. Amanda J. Fortin FRCS(C), MSc  
41 Ramsey Lake Road, Suite 1142,  
(Health Sciences North) Sudbury, Ontario  
Tel. 705.523.7060 | [DrFortin.ca](http://DrFortin.ca)

Call today to book your consultation!

**REPORT from  
OTTAWA  
by  
Carol Hughes**

Federal member of Parliament  
Algoma-Manitoulin-Kapuskasing



A recent letter from Liberal MP's that challenges New Democrats to adopt their plan to fix the Last Post Fund by way of a motion in the House of Commons has been published in many news outlets and weekly papers in Ontario and Quebec. While the issue is solid, the content of the letter has to be taken with a grain of salt. Glossing over the fact that it was a Liberal government who gutted the veterans' funeral and burial program in the first place does not frame a discussion in a transparent fashion.

For the Last Post Fund the prob-

lems began in 1995 when the Liberals reduced the survivor estate exemption from approximately \$24,000 to \$12,000 and not much has been done to reverse that crippling blow to this day. The immediate effect of this draconian measure was that spouses and families of any veteran whose estate is valued at more than \$12,000 are ineligible for support to help with the funeral or burial expense for their loved one. This left many thousands of veterans' families on the outside looking in as they could no longer even apply for funeral or burial assistance.

# Fixing the Last Post Fund

This is truly shameful when coupled with the fact that a \$12,000 estate exemption amount is set well below the poverty level in Canada. A \$13,000 estate could never be accused of being anything more than scrape by on. Sadly, it fits a pattern that has seen consecutive governments nickel and dime individuals who selflessly served their country, in many cases risking life and limb in the process.

New Democrats have consistently pressed Liberal and Conservative governments for improvements to the Last Post Fund. We have challenged the Conservative government to defend decisions that have led to more than 20,000 applica-

tions for this program being rejected – that is a refusal rate that amounts to approximately two of every three applicants. We also continue to ask why no government has increased funding for the program since 2001 and why eligible families receive a paltry \$3,600, which is nowhere near enough to cover today's funeral and burial costs.

My colleagues and I see this as a job that cannot be abandoned and will continue to press for changes to meet the needs of our veterans. We must ensure that our veterans and their families are well cared for, from the moment they sign up to the moment they pass away, a commitment that, in our opinion, includes a dignified

funeral and burial.

As for the substance of the Liberal motion on the Last Post Fund, our caucus will discuss its merits as we do with all items that come before parliament.

With the leadership of Veteran's Affairs critic, Peter Stoffer, I am certain we will arrive at a decision that places the interests of veterans and their families first and foremost.



**Denise's  
Café**  
31 Birch St.  
705-864-2400

**EAT IN OR TAKE OUT**  
We serve breakfast  
& lunch daily **MON-FRI.**  
6:00 a.m. to 4:00 p.m.

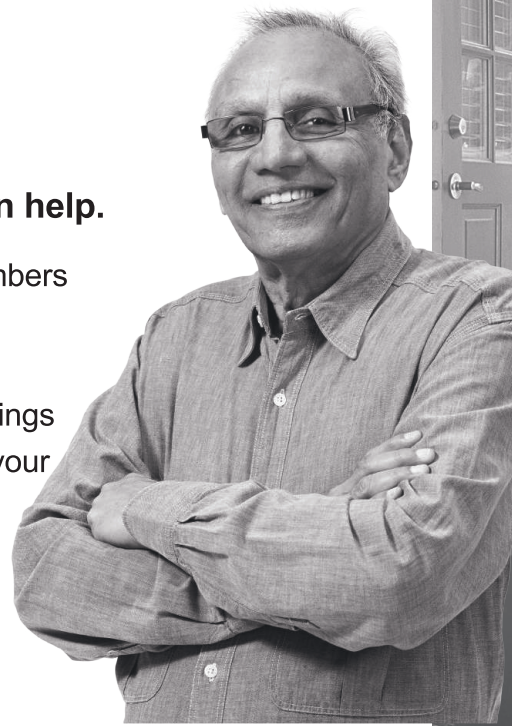
**OPEN ON SATURDAYS  
FROM 7-12  
BREAKFAST ONLY**

**We offer fresh  
flowers daily**

## Find *Freedom* in your home.

**The Healthy Homes Renovation Tax Credit can help.**

Seniors 65 years and older and their live-in family members are eligible for a tax credit of up to \$1,500 on home modifications that improve safety and accessibility — regardless of income. Eligible improvements include things like support bars, ramps or walk-in bathtubs. To claim your credit, keep your receipts for when you file your taxes.



ontario.ca/healthyhomes • 1-866-668-8297 • TTY 1-800-263-7776

Paid for by the Government of Ontario





# Chapleau Moments

**Cont'd from P.3**

ings. Members of the family still live in Chapleau.

Rev. Gowan Gillmor, commonly called 'The Tramp' because apparently on many occasions he walked the railway track from Sudbury to

Chapleau and on one occasion at least to Port Arthur.

Rev. Gillmor, who was in Chapleau in late 1885, conducted a meeting in the partially completed CPR station which resulted in the decision to proceed with the

building of St. John's Anglican Church. The first St. John's was on the old tennis court and was opened and dedicated on July 1, 1886 with Rev. Gillmor in attendance.

As an aside Rev. Gillmor was also instrumental in the establishment of Church of the Epiphany in Sudbury where Thomas Corston was the rector before becoming Bishop of the Anglican Diocese of Moosonee. As many readers will know, Tom was born and raised in Chapleau, the son of Frances (Jardine) and the late Henry 'Chicken' Corston.

Rev. Gillmor provided an insight into his life and the situation along the CPR line. "I ministered to the construction people numbering about 5,000, holding services as I went along in camps, shanties and box cars and sleeping in these overnight; my experiences were the rough-

est. These people were from all parts of America and Europe.

"Typhoid fever was the scourge of railway construction. Hospitals (Note: Not in any sense, a hospital as we would know one today) were filled with the sick and dying. My experiences ... were varied, solemn and awful."

For many years, he literally lived with the railway men, often pushed a handcar from section house to section house, drank tea from the same pan, ate green bacon from the same plate and often slept under the same blanket, according to Archbishop Robert J. Renison.

Although First Nation people had travelled through the Chapleau area, they now began to move to the new community and settle there. Although Rev. John Sanders, perhaps the first aboriginal Anglican priest in Canada, never lived in the community, members of his family have moving from James Bay by canoe. One of his trips after becoming based at Mattagami, was to go to Flying Post and then reach the Loon (Borden) Lake portage to the Chapleau River into Chapleau. He did conduct services at Chapleau.

Although there were a number of Roman Catholic Jesuit priests in Chapleau, Father Louis Cote may have been the first to live in Chapleau, and helped establish Sacred Heart Church.

Notwithstanding the horrendous challenges facing them in the beginning, by the summer of 1886, the tents and shacks which had comprised "Old Chapleau" -- a

term used by the settlers to distinguish it from the "New Chapleau" -- were being replaced with permanent structures.

The thoroughfares of the community were being set out, as land was cleared and replaced the forests. The CPR prepared a diagram including the streets -- north and south after Governors General of Canada and east and west after trees.

Interestingly, and I only discovered it as I was examining a copy of the diagram, provided to me by Ian Macdonald, Chapleau has two streets named after the same Governor General -- Young and Lisgar. John Young became the Earl of Lisgar.

Meanwhile, general stores were established as well as private residences. The CPR had completed its station and office building. It had also built a general store, coaling plant, freight sheds, two boarding houses and residences for local officials.

Life was not easy. For example in 1888 an outbreak of diphtheria struck and several, including young children, died during the epidemic. Fire was also a con-

stant threat.

However, these amazing pioneers, who really did carve a community out of the wilderness, never looked back as they established churches, a school, curling and skating rinks, a town band, sports teams, organizations, businesses, and continued to lay the foundations of their community in so many ways despite the obstacles.

By 1901, with the leadership provided by George Brecken Nicholson, as the first reeve, Chapleau became incorporated as a municipality, and continued to move forward, demonstrating so often that the greatest resource any community has is its people.

Ian Macdonald, who is always so helpful, has kindly agreed to share his research into the building of Chapleau in a future column. Ian who lived in Chapleau and attended Chapleau Public and Chapleau High schools also worked for the CPR. He is retired head of the department of architecture and professor emeritus at the University of Manitoba. My email is [mj.morris@live.ca](mailto:mj.morris@live.ca)

**March Happenings at Chapleau High School**  
**CHARACTER ATTRIBUTE: Courage**

Tuesday, March 5 Pre Grade 10 Literacy Test → 8:45 to 11:20 a.m.  
 Please do not schedule any appointments, trips, etc... on this date. Both Practice Test and the Literacy Test are compulsory.

Monday, March 11 to  
 Friday, March 15 Mid Winter Break

Wednesday, March 20 Parents' Night → 7:00 to 9:00 p.m. – Progress Reports will be distributed to parents at this time.

Thursday, March 28 27th Annual Easter Egg Hunt

Friday, March 29 Good Friday – No School for Students and Staff

Monday, April 1 Easter Monday – No School for Students and Staff

## Rotary Club makes donation



The Rotary Club of Chapleau shows their continued support by generously donating \$1000 towards the purchase of an Wall Information Board for the Bignucolo Residence in memory of Rotarian George Evans. Standing in front of the Information Board from left to right is Gail Bignucolo, Chief Executive Officer of Chapleau Health Services and Rotary Club members, Janet Broomhead, Lucy Bignucolo and Dr. Jim Shearer.

**Full Time Position Available**

- applicant should be committed to customer service
- must be knowledgeable in computers and consumer electronics
- bilingual (French/English) an asset
- will train in all departments

Group Health and Dental Benefits available. This is not a student position as hours will conflict.

Please apply in person with resume to:  
 Lucy Bignucolo  
 Chapleau Village Shops

**NEWS FROM THE PARK BY Mike Mantha**

Provincial Member of Parliament for Algoma-Manitoulin



As many of you know, the Provincial Legislature returned this week for the first time in four months. The new session, as always, began with a speech from the throne. In that speech, Premier Kathleen Wynne made a commitment to the people of Ontario that trust, transparency, change, and cooperation would be at the forefront of her administration.

As a caucus, New Democrats committed to supporting the throne speech, believing that we had a new opportunity to get real results for Ontarians.

Two days later, a disturbing announcement was made by the new Minister of Energy, Bob Chiarelli. He revealed that more documents related to the gas plant cancellations existed. This revelation flew in the

face of ongoing reassurances by the government that all documents had been released.

During the 2011 general election, the Liberal Party of Ontario decided to cancel two gas-fired power stations, one in Oakville and one in Mississauga, in a bid to save two Liberal seats. During the fall of 2012, the legislature forced the government to turn over documents relating to the cancellation so the political motivation the decision and the cost to Ontario taxpayers could be revealed.

Initially the McGuinty government released some 36,000 documents,

claiming they had presented all relevant materials. Weeks later, the government turned over another 20,000 more, which they claimed had accidentally been missed in earlier searches. Now months later we have been informed that even more documents exist.

This political decision will cost taxpayers millions of dollars. First accounts estimated approximately \$230 million. With the release of these new documents, it's clear the total price tag will not be known until the Auditor General finishes examining the cancellations.

It is difficult for people to have trust in their government when they appear to be concealing information from the public. Documents that were provided in the releases were either missing pages or much

of the content was blacked out.

We have been shut out of the legislature for the past four months, preventing us from getting down to work and making important decisions for every day Ontarians. This gas plant scandal is causing further interruption in the legislature.

My NDP colleagues and I believe Ontarians deserve better. They deserve answers, not more cover-ups.

New Democratic Leader Andrea Horwath says an independent public

inquiry is the best way to ensure that all facts around the scandal are made public. According to Andrea, "when people don't believe their government can provide straight answers or honest information we have a serious problem – and that's bad for democracy".

As always, please feel free to contact my office about this issue, or any other provincial matters. You can reach my constituency office by email at [mmanthaco@ndp.on.ca](mailto:mmanthaco@ndp.on.ca) or by phone at 705-461-9710/1-800-831-1899.

# Transform Your Photos Into One Of A Kind Gifts



Mouse Pads



864-1870



Jig Saw Puzzles

Online store coming soon!




I.D. Photos  
FAC - PAL

864-1870

## Thank you to our Supporters!

Chi-Miigwetch to our local and area businesses for their donations to the Chapleau Cree First Nations 19th Annual Kids Fish Derby. Without your generous support and community involvement this event would not be possible. Remember, Shop & Support Locally!

<ul style="list-style-type: none"> <li>- Model Drug Store</li> <li>- Mikes Studs N Nuts</li> <li>- JAM FM</li> <li>- Wyatt Image Solutions</li> <li>- KPMP</li> <li>- Collins Home Hardware</li> <li>- Aux Trois Moulins</li> <li>- Valu-Mart</li> <li>- Village Shops</li> <li>- Ontario Ministry of Natural Resources</li> <li>- APANO</li> <li>- NAPAAuto Parts</li> <li>- Mike Bedard Construction</li> <li>- Royal Bank of Canada</li> </ul>	<ul style="list-style-type: none"> <li>- Pimii Kamik Gas Bar</li> <li>- Miller Paving</li> <li>- CCFN Health</li> <li>- CCFN Education</li> <li>- Valentine Farms</li> <li>- London Life Insurance</li> <li>- J&amp;N Signs</li> <li>- Chapleau Express</li> <li>- Northeast Superior Regional Chiefs Forum</li> <li>- Northern Credit Union</li> <li>- New North Fuels Inc.</li> <li>- Chapleau General Hospital</li> <li>- And all the Volunteers</li> </ul>
---	--



# Police Report

## Stolen Property And Drugs Seized

On February 23, 2013 Ontario Provincial Police (OPP) Wawa Detachment were advised by a local business of several thefts caught on camera. Stolen were 3 GPS units, 2 security cameras and 2 electric shavers. Investigation led the OPP to execute a warrant at a residence on Winston Road in Wawa. Some of the stolen property was recovered at the residence along with over \$1400 worth of narcotics including Ecstasy and Percocet pills were seized.

As a result, 31-year-old Jody CLOUTIER of Wawa was arrested and stands charged with the following offences;

- 1) Possession of Property Obtained by Crime Under \$5,000 – 5 counts
- 2) Possession for the Purpose Schedule I
- 3) Possession for the Purpose Schedule III
- 4) Fail to Comply with Recognizance – 2 counts

The accused remains in custody and will be attending Bail Court in Sault Ste. Marie. Wawa OPP continue to investigate the outstanding stolen items.

## Chapleau Break and Enter

On February 24, 2013 the Ontario Provincial Police (OPP) Chapleau Detachment were advised of a break in to a residence on Richard Street. The break in occurred sometime overnight and investigation revealed that the home had been entered via a basement window.

Over 250 prescribed Oxytocin were stolen from the home and the estimated street value of this narcotic is \$20,000. Collectible coins were also reported stolen and are valued at \$200.

An OPP Scenes of Crime Officer attended the residence and collected evidence for further investigation. Anyone with any information is asked to call the OPP at 1-888-310-1122 or Crime Stoppers.

"If you have any information regarding any criminal activity, call 705-942-7867 or 1-800-222-8477 (TIPS); submit an e-tip from The Crime Stopper's web-site at [www.saultcrimestoppers.com](http://www.saultcrimestoppers.com) or send a text to keyword SSM to the short code number 274637.

## THE LOCAL MARKET PLACE

**CHADWIC HOME, FAMILY RESOURCE CENTRE.** Offers shelter, emotional support, and information for women and their children who are in crisis situations. We have a Toll Free Crisis Line which is staffed 24 hours a day. We can arrange for free transportation to the Centre for women who live in the Algoma/Chapleau area. We also offer support to women who live in the communities of Chapleau, White River, Dubreuilville, and Hornepayne through our Outreach Program. Our Outreach Worker travels to those communities to meet with women who need emotional support as well as information about their rights and options. If you need to speak with the Outreach Worker when she is in your community, you can call the Centre at any time to set up an appointment. You do not need to be a resident of the Centre in order to use our services. If you need someone to talk to or if you just need someone to listen, call our Toll Free Crisis line at 1-800-461-2242 or you can drop in at the Centre. We are here for you.

**ALCOHOLICS ANONYMOUS**  
Offers help to anyone who desires to stop drinking. Open discussion meeting on Sundays at 2:00 p.m. Trinity United Church basement. Telephone contacts: 864-2786

**ALCOHOLICS ANONYMOUS**  
Offers help to anyone who has the desire to stop using drugs/alcohol. Open discussion meeting on Saturday at 7:00 p.m. Pentecostal Church. Call 705-860-9769 for support.

**Alcoholics Anonymous (A.A.)** Open discussion meeting every Monday evening. Brunswick House First Nation Band office lounge 7pm. Narcotics Anonymous (N.A) every Tuesday same place same time. NNADAP Worker @ 864-0174 info.

Societe Alzheimer Society meetings will be held at the Chapleau Hospital every 1st Monday of each month starting from 7:00 p.m. to 9:00 p.m.

### FOR SALE

**1998 Chevrolet Suburban 4x4, 6.5 l. Diesel 1500 with 2500 undercarriage. AM/FM CD** Recent front diff & transfer case overhaul, new front shocks and wheel bearings, new fuel lines, rim mounted winter tires. Newer fuel tank (4yrs) Needs Engine. 276,000 kms. \$1700.00 obo. As is. Call 705-864-0889.

**2010 Dodge Grand Caravan SE** rear entry converted passenger wheelchair van. Asking \$27,500.00 firm certified+4 mounted winter tires (studs). Worth over \$55,000.00 new. Call 705-864-0889 ask for Mario or leave a message.

### WANTED

To purchase winterized cottage or home with power for year round living near water within 30 km of Chapleau. Call 705-864-1870 and leave message.



# Have a Great Week end



## Bruneau's INSTANT CASH REFUND REMBOURSEMENT INSTANTANÉ

- INSTANT CASH REFUND
- ELECTRONIC FILING
- FAMILY AND SENIOR DISCOUNTS
- PICKUP AND DELIVERY FOR SENIORS
- YEAR ROUND SERVICE

- REMBOURSEMENT INSTANTANÉ
- RAPPORT D'IMPÔT ÉLECTRONIQUE
- RABAIS FAMILIAL ET LIVRAISON POUR PERSONNES ÂGÉES
- SERVICE À L'ANNÉE

### Tax Prep and E-File

**JOHN BRUNEAU**  
101 LANSDOWNE ST. S.

**705-864-0404**

RELIABLE - PROFESSIONAL - CONFIDENTIAL

### Employment Opportunity

RBC Chapleau Branch is currently looking for an outgoing Customer Service Representative. The ideal candidate will be customer service orientated, driven to help clients meet their needs or resolve problems.



For full job details and to apply, please visit [rbc.com/careers](http://rbc.com/careers) and search position #\_25643

**Le spectacle de variétés du 6 mars est annulé.**

**ESCT Talent SHOW has been cancelled**

### ESTATE NOTICE

ANY PERSON having claims against the Estate of **RITA BEATRICE MITCHELL** of the Town of Chapleau, in the District of Sudbury, who died on the 22nd day of January, 2013, are required to file them before the 16th day of March, 2013 after which date the Estate will be distributed with regard only to those claims that are received.

Dated at Sault Ste. Marie. Ontario this 13th day of February, 2013.

**MICHAEL C. ALLEMANO**  
**ALLEMANO AND FITZGERALD**  
Barristers and Solicitors  
369 Queen Street East, Suite 103  
Sault Ste. Marie, Ontario P6A 1Z4

Solicitor for the Estate of  
**RITA BEATRICE MITCHELL**

### BODYLINES BY CRACK LTD.

**5 Licensed Bodymen**  
**Insurance Claims**  
**Windshield Repairs**  
**and Replacement**  
**State of the Art Frame**

**ALL WORK GUARANTEED**  
PLEASE CALL 705-856-1406

### BERRY'S FREIGHT SERVICES

TIMMINS - CHAPLEAU - TIMMINS  
MONDAY TO FRIDAY  
1lb. to 10,000 lbs.

FOR QUALITY SERVICES AT INEXPENSIVE PRICES  
GIVE US A CALL AT  
1-705-264-4334

### SLOMA CLEANERS

Drop off at Between Friends (Cedar Grove)  
Mon to. Fri. 8 am-noon and 1-4 pm

ALL ADS ARE ACCEPTED AT DENISE'S FLOWER SHOP  
DEADLINE FOR RECEIVING ADS IS WEDNESDAY 4:00 p.m.

### CLASSIFIED ADVERTISING RATES

Regular Classified Ads  
First 25 words or less \$6.25  
Each additional word \$0.16+GST  
No refunds on cancelled classified ads.

### NEW AT THE CHAPLEAU PUBLIC LIBRARY NEW BOOKS

Inside - Alix Ohlin  
The Age of Hope - David Bergen  
Private Berlin - James Patterson  
Watching the Dark - Peter Robinson

#### ATTENTION

**We require any copies of old Express newspapers. Thank you!**

### Alain Bouffard

Sales Representative  
61 Mission Road  
Wawa, Ontario, P0S 1K0  
Tel: 705-856-2394  
Fax: 705-856-4290  
[alainbouffard@missionmotors.com](mailto:alainbouffard@missionmotors.com)



NEW & PRE OWNED VEHICLE SALES  
GOODWITCH SERVICE CENTER  
24hr TOWING



### ALLEMANO & FITZGERALD

Barristers and Solicitors

**MICHAEL C. ALLEMANO, B.A., L.L.B.**  
Certified by the Law Society as a Specialist in Real Estate

Law  
P.O. Box 10, 369 Queen St. E. Suite 103, Sault Ste. Marie, Ontario P6A 1Z4  
Phone (705) 942-0142  
Fax (705) 942-7188  
P.O. Box 1700, 37 Broadway Avenue, Wawa, Ontario P0S 1K0  
Phone (705) 856-4970  
Fax (705) 856-2713

### Northern Lights Ford Sales

**Andrew G. McKenzie**  
**Travis Gendron**



Highway 17 North  
P.O. Box 1033  
Wawa, ON. P0S 1K0  
Business 705-856-2775  
Fax 705-856-4862

[tgendron@northernlightsford.ca](mailto:tgendron@northernlightsford.ca)  
[sales@northernlightsford.ca](mailto:sales@northernlightsford.ca)



2 Featured Footlongs  
Every Sunday in March  
\$5 Dollars EACH

Your choice of Barbequed Rib or Roasted Chicken

Bring coupon in to enter draw for food prizes  
OFFER GOOD AT Name: \_\_\_\_\_  
Subway Chapleau Tel: \_\_\_\_\_



**LABERGE VENNE & PARTNERS**  
PROFESSIONAL CORPORATION  
CHARTERED ACCOUNTANTS and CONSULTANTS  
COMPTABLES AGRÉÉS et CONSULTANTS

### Professional Services to Northern Ontario for 30 years

Financial Statements for Small Business & Corporations  
Tax Returns - Personal, Corporate and Trust/Estate  
Personal, Retirement, Estate Financial and Tax  
Planning Strategies  
Business Projections, Plans and Financial Proposals  
Computer Consulting  
ACCPAC and Quickbooks

1970 Paris Street, Sudbury, Ontario P3E 3C8  
(705) 523.0272 (800) 581.7510 [www.lvpartners.ca](http://www.lvpartners.ca)



**LABERGE VENNE & PARTNERS**  
PROFESSIONAL CORPORATION  
CHARTERED ACCOUNTANTS and CONSULTANTS  
COMPTABLES AGRÉÉS et CONSULTANTS

### 30 ans de service professionnels pour les entreprises du Nord de l'Ontario

États financiers pour petites et moyennes entreprises et corporations  
Rapports d'impôts personnel, de compagnie et de fiducie  
Planification financière et fiscale personnelle et de compagnie  
Projections financières, plans d'affaires et propositions de financement  
Consultation en informatique  
ACCPAC et Quickbooks

1970 rue Paris, Sudbury, Ontario P3E 3C8  
(705) 523.0272 (800) 581.7510 [www.lvpartners.ca](http://www.lvpartners.ca)

# Antibullying at Fatima



"The Huron Superior Catholic School District Board with headquarters in Sault Ste. Marie, designated February 27 as PINK DAY all across its schools. Staff and students at Our Lady of Fatima School proudly wore pink outfits, or pink accessories to show their support for the Anti-Bullying Campaign that took place. Conversations and activities centered in this serious topic were part of the day, a safe and healthy environment, where children and adults can work at ease is a priority-Principal Salazar said. Supporting an open and constant dialogue with students and parents, information, tolerance and respect for differences are all crucial part of the campaign to eradicate all forms of bullying from schools in Ontario. The message was clear even for the younger students, that will be reminded that all their peers and teachers wore pink to support this worthy cause".

## Feel FAB-U-Less

March 18<sup>th</sup> – April 27<sup>th</sup>

Weight Loss Challenge

Includes:

- 12 Group Training Sessions
- 2 Group Information Sessions
- Meal Planning Guidelines
- 6 Day Passes
- 3 Body Measurements
- 2 Fitness Classes



Challenge Yourself, Improve your Health,

Feel Better!

Registration starts February 8<sup>th</sup> 2013

Full of Fitness

Call 864-2150 or Facebook

## MPP CONSTITUENCY CLINICS

**Wednesday March 13**

**Manitouwadge**  
9:00 – 10:00 am @ Recreation Centre  
**Hornepayne**  
1:00 – 2:00 pm @ Grace United Church  
**White River**  
3:30 – 4:30 pm @ Municipal Office

**Thursday March 14**

**Dubreuilville**  
9:00 – 10:00 am @ Municipal Office  
**Wawa**  
11:00 am – 12:00 pm @ Municipal Office  
**Chapleau**  
2:00 – 3:00 pm @ Municipal Office

**Friday March 15**

**Goulais River**  
9:00 – 10:00 am @ Goulais River Fire Hall  
**Searchmont**  
1:00 – 2:00 pm @ Community Centre  
**Prince Township**  
3:00 – 4:00 pm @ Township Office

Michael Mantha, MPP for Algoma-Manitoulin, is hosting constituency clinics in communities across the northern and western regions of the riding. The public is invited to meet with Mr. Mantha to discuss issues and concerns. For further information please contact the constituency office.



**Michael Mantha**

Algoma-Manitoulin, MPP | Député

Email | Courriel : [mmantha-co@ndp.on.ca](mailto:mmantha-co@ndp.on.ca)

Tel | Tél : 705-461-9710

Fax | Télcop : 705-461-9720

Toll free | Sans frais : 1-800-831-1899