

Talk about good coffee!

Miss Muggins Coffee and Fresh Donuts



CHAPLEAU EXPRESS

PIZZA HUT & KFC
There's a Reason We're Number 1
"0 TRANS FAT"
864-0911



Vol. 12, Issue 28, March 22, 2008

Chapleau Midgets win gold



The Chapleau Midget Huskies take a moment for a group photo moments after winning the N.O.H.A Championship.



Some players had the luxury of having their own fan clubs. Shown above, holding the Championship trophy is Nels Lindquist accompanied by his fan club comprising of Pat Connelly, B.J. Bertrand, Michael White and Dave Tremblay

Chapleau Midget Huskies captured top honors in the N.O.H.A Championships held in Chapleau last weekend.

Teams from Dubreuilville, Englehart, East Nipissing and Powassan centered in on Chapleau, the host for this year's championship.

On Friday Chapleau was opposed

to Dubreuilville in the first game of the tournament. Showing grit and determination, the Dubreuilville team gave the Huskies a run for their money. Chapleau managed to pull off a win with a second left on the clock on a powerplay goal from Jarret Hamel with assists going to Trevor Guthrie and Justin Ruffo.

Chapleau's second matchup of the day was against the East Nipissing Vipers from Astorville.

Although penalty stricken, the game proved to be an offensive exercise for the Chapleau Huskies, winning the game by a score of 8 to 2 with three goals on the powerplay and a hat

trick for Ryan Connelly.

On Saturday morning, Chapleau was to be defeated, 3 to 2, at the hands of the Charlton Englehart Lions, in a closely contested game.

Undeterred from their loss in the previous game, the Chapleau Huskies showed discipline and determination in their next three games.

The Huskies won 4 to 1 against the Powassan Hawks placing them in first place in the round robin.

On Sunday, morning March 16, the final scenario was to be carved out in the semi finals. The first place team was to meet the fourth and the second

place team was to meet the third. The Huskies were to be matched to the

Dubreuilville Bobcats and the East Nipissing Vipers were to be matched to the

Powassan Hawks.

In the first matchup, the Huskies

Con't on P.4

Campaign to bring Doctor Young home

By Jim Prince

The move to bring Doctor Young home to Chapleau is gaining momentum.

The latest development came during a discussion at last Monday's regular meeting of the municipal council and as a result, Mayor Earle J. Freeborn has contacted the Agency of authority with a strong request to have Doctor Young transferred from a senior's facility in Timmins to Chapleau.

That Doctor Young, who devoted a lifetime to the health

and welfare of this community's residents, is now in care at a nursing home in Timmins doesn't sit well with many here, who are circulating a petition and pressuring to have him brought home to be cared for at the long-term care wing at the Chapleau General Hospital.

Apparently the Community Care Access Centre (CCAC), a provincial umbrella agency which is head-quartered in Sudbury, makes the decision on whether Doctor Young is placed in Chapleau.

Council has decided to take its demand to have Doctor Young returned to Chapleau, directly to CCAC and supported the Mayor Earle Freeborn in going that route.

During discussion at last Monday evening's council meeting, the Mayor said he did not like that decisions were being made outside the community.

Mayor Freeborn, as the result of discussions with the Hospital had expected a public statement to

Con't on P.2

Long Term Forecast

Friday
High -4
Low -20

Saturday
High -6
Low -17

Sunday
High -9
Low -21

Monday
High -7
Low -22

Tuesday
High -2
Low -11

Wednesday
High -2
Low -8

Serving Northern Ontario with Distinction since 1996

NHC Northern Haul Contracting

New! Automotive Mechanic Services!
Also, Welding Services, and much more!

Office: (705) 864-1095
Fax: (705) 864-1110

come in with a problem, come out with a smile :)

Visit our website at www.northernhaul.com for a list of our services!

Campaign to bring Doctor Young home

By Jim Prince

The move to bring Doctor Young home to Chapleau is gaining momentum.

The latest development came during a discussion at last Monday's regular meeting of the municipal council and as a result, Mayor Earle J. Freeborn has contacted the Agency of authority with a strong

request to have Doctor Young transferred from a senior's facility in Timmins to Chapleau.

That Doctor Young, who devoted a lifetime to the health and welfare of this community's residents, is now in care at a nursing home in Timmins doesn't sit well with many here, who are circulating a petition and pressuring to have him brought

home to be cared for at the long-term care wing at the Chapleau General Hospital.

Apparently the Community Care Access Centre (CCAC), a provincial umbrella agency which is head-quartered in

Sudbury, makes the decision on whether Doctor Young is placed in Chapleau.

Council has decided to take its demand to have Doctor Young returned to Chapleau, directly to CCAC and supported

OBITUARY

LINKLATER, MERVYN CLAUDE



It is with great sorrow that the family wishes to announce the passing of Mervyn Claude Linklater, 79 years old, on Friday, March 14th 2008 at the Sudbury Regional Hospital, St. Joseph's Health Centre. Born in Chapleau, Ontario, March 21, 1928. Mervyn was a school teacher for many years before becoming a Registered

Nurse, working in Canada and parts of the United States, until retiring. Mervyn was also a long time member of the Loyal Order of the Moose, and a teacher to new Immigrants to Canada. Beloved son of the late Sydney Bernard and the late Annie (nee Kirkness) Linklater. Brother of Kathleen Simard, Norman Linklater, Lila Moreau, Shirley Gherbaz, all predeceased. Sadly missed by his nieces and nephews Edward Simard (wife Joyce), Joan MacGillivray, Betty-Lou (husband William Walker), Linda (husband Marcel Paradis), Gary Simard (wife Suzanne), Barbra Anne (husband Henry Parise), Richard Linklater (wife Charlene), Brenda Linklater, Mary Gail (husband Sydney O'Riley), Marilyn (husband Robert Plourde), Joanne (husband Mike Branchaud), Kathryn (husband Terrance Piche), Anne Marie (husband Donald Barsalou), Cynthia Moreau, Valerie St.Cyr, Shawn Moreau, Douglas Moreau, Wendy (husband Steve Frankow), Debra (husband Alfred Burnham), Glenda Gherbaz-McAuley (predeceased), Richard Gherbaz, Todd Gherbaz (predeceased), Donna (husband Serge Daoust), Kevin Gherbaz, Kenneth Gherbaz and Gregory Gherbaz. Lovingly remembered by his many great nieces, great nephews, relatives and friends. Especially dear to his heart his great nieces Terri-Ann McAuley, Debbie Lynn McAuley, Lisa Marie McAuley, his great nephews Shawn Kirkness O'Riley, Micheal Joseph McAuley and great great nephew Eric Dobratz-McAuley and his little dog Baby & Muffy (predeceased). Known well in the community as "Merv the Nurse", he created and managed a non profit organization from his home, co-ordinating donations that helped many Needy families in the Greater Sudbury Area. Mervyn was an incredibly special person, with so much love to give that he shared his compassionate nature with his family and friends, his love for his animals and plants and his personal commitment to help others. Mervyn brought so much joy and light to everyone's life. *You will be greatly missed. We love you our Bubba.*

Memorial service will be held at the Church of the Epiphany, 85 Larch St., Sudbury, on Wednesday March 19, 2008 at 2 p.m. Cremation at Park Lawn Crematorium. Donations to the Heart & Stroke Foundation would be appreciated by the family. (Friends may call at the church after 1:30 pm Wednesday) Jackson & Barnard Funeral Home, Sudbury entrusted with arrangements.



ATTENTION VETERANS ex-service & still serving men & women and dependants

The Royal Canadian Legion
Service Bureau Officer

Mr. Peter Shields

238 Algonquin Ave.

North Bay, Ontario PIB 4V9

Will be visiting Branches in our area
during the week of April 21st, 2008

Anyone wishing information
or assistance regarding

- Veterans Affairs Canada Disability Pensions
 - Treatment for Entitled Veterans
 - Application for Benevolent Funds
 - War Veterans Allowances, including Widows
 - Appeals against unfavourable V.A.C. Decisions
- is requested to contact the Branch Service Officer or Secretary of the local Branch.**

Gilbert Roy For an appointment
Branch Service Officer Call 705- 864-0484 or 864-0260

**For best results, send your
articles
and photos electronically to
chaexpress@sympatico.ca**



To be held in Chapleau

SP-100 Forest Fire Fighter Training

Week of May 12th to the 16th

Cost: \$820 for the SP-100

Pre-Fit, Chainsaw and First Aid/CPR are
extra \$

**By offering the training in Chapleau,
residents will save money from having to
travel to the usual training locations, as
well as pay for meals and
accommodations, on top of the training
fees. The minimum of 24 registrations will
be required for the SP-100 training to run in
Chapleau. Deadline for registration is
April 14th.**

To Register contact Linda at 864.9434 or
drop in at the Chapleau Innovation Centre.

Full payment of course fees must be made at
the time of registration.

Course Cancellation: Every course/ seminar
must have a minimum enrolment. If any
activity is cancelled due to insufficient
enrolment, students will be notified by phone.

If you cancel your registration you will have to
pay a \$10 administration fee.

The Chapleau Express

P.O. Box 457

Chapleau (Ont.) P0M 1K0

Telephone - Fax : 705-864-2579

e-mail : chaexpress@sympatico.ca

Published every Saturday/Sunday

Deadline for receiving ads is Wednesday at 4 p.m.

The Chapleau Express is delivered free of charge to every household each Saturday. If you have any comments, please feel free to contact us. Subscriptions: **\$70.00 per year (Canada) \$150.00 U.S per year (U.S.A)** Canadian Publications Products Sales Agreement #30183799

WILLS & POWER OF ATTORNEYS

Is your Will and Power of
Attorneys out of date?

For Confidential Services contact:

--Rose Bertrand 705-864-0230--

Q-RAY



AS SEEN ON
TV

Designed to Optimize
Your Bio-Energy

From **\$79.⁹⁸**

Chapleau Village Shops

GOING TO CHURCH

Catholic Church
SACRED-HEART OF JESUS
PARISH
PAROISSE SACRÉ-COEUR
DE JÉSUS

26 Lorne Street North
OFFICE- 21 Lansdowne St.N.

864-0747

Sunday/dimanche

9:30 a.m. English

11:00 a.m. Francais

Weekdays Mon-Sat

en semaine Lun-Sam

Fr. Jacques Fortin

ST. JEAN DE BRÉBEUF

(Sultan)

Liturgy of the Word

Liturgie de la parole Every 3rd

Saturday 7 p.m. Bilingual

Tous les 3e samedis 19h

Bilingue

Permanent Deacon Ted

Castilloux

Diocese of Moosonee

Anglican Church of Canada

ST. JOHN'S CHURCH

4 Pine Street West

864-1604

Sunday Service

10:30 a.m.

Rev. Bruce Roberts

ST. MARY'S ANGLICAN

CATHOLIC CHURCH

78 Devonshire Street

864-0909

Sunday Service 10 a.m.

Rev. William P. Ivey

CHAPLEAU PENTECOSTAL
CHURCH

9 Elm Street (P.A.O.C.)

864-0828

Sunday School 9:45 a.m.

Sunday Services

11 a.m. & 7 p.m.

Family Night (ages 1-109)

Wednesday 7 - 8:15 p.m.

Pastor Dan Lee

TRINITY UNITED CHURCH

Corner of Beech and Lorne -

864-1221

Sunday Service and Sunday

School 11:00 a.m.

Anna Chikoski

Soup Kettle every 2nd

Wednesday of the month

OUR LADY OF SEVEN

SORROWS PARISH

PAROISSE NOTRE-DAME-

DES-SEPT-DOULEURS

(Foleyet)

Liturgy of the World Sundays

11 a.m.

Liturgy de la Parole

Dimanche 11h

Mass every 2nd & 4th Sunday

at 4:00 p.m.

Messe sux 2e et 4e dimanche

à 16h

COMMUNITY BIBLE CHAPEL

Corner of King and Maple

864-0470

Communion Service 9:30

Family Bible Hour 11 a.m.

Including Sunday School

Evening Bible Study and

Ladies Bible Study

during the week

Transportation available

Al Tremblay

Come on out to see Treasa Levasseur mean every word she sings



Broken-heart ballads, barroom blues, gospel style inspirations, raunchy rock... Treasa plays whatever shakes her soul. Her lyrics are smart, poetic, and socially conscious. She has a whole lot to say, and she says it with sincerity and sass, with a powerhouse voice that cannot be ignored or denied.

Influenced by the whole sisterhood of soulful sirens, from Joni Mitchell to Etta

James, Carole King to Dusty Springfield and all the way back to Bessie Smith, Treasa's roots spread far and dig deep. She plays piano, accordion, guitar, mandolin, and anything else she can get her hands on.

Her first full-length album, Not A

Straight Line, is an eclectic collection of carefully crafted and thought-provoking songs, this album is sure to challenge and inspire listeners.

This Wednesday, March 26, 2008, at 7:30 p.m. at the Chapleau High School cafetorium, Treasa

Levasseur will show us her unique and powerful voice which has silenced many rooms from Whitehorse to St. John's NL, and all points between.

Admission by season passport.

Tickets also available at the door, \$25 adults, \$10 youths.

Venez entendre la voix puissante et unique de Treasa Levasseur

Ballades tristes, au rock torride, blues et musique d'inspiration gospel, Treasa joue de tout, du moment que cela touche son âme. Ses paroles sont intelligentes et poétiques, et elles témoignent de sa conscience sociale. Elle en a beaucoup à dire, et elle le dit avec sincérité et aplomb, de sa voix puissante qui ne peut être ignorée ni contestée.

Influencée par toute une lignée de grandes dames de la

musique telles que Joni Mitchell, Etta James, Carole King, Dusty Springfield et Bessie Smith, Treasa a des racines musicales étendues et profondes.

Elle joue du piano, de l'accordéon, de la guitare, de la mandoline et de tout autre instrument qui lui tombe sous la main.

L'album "Not a Straight Line" de Treasa Levasseur est un mélange éclectique de chansons bien écrites et novatrices, qui sauront inspirer et

défier l'audience.

Ce mercredi soir, le 26 mars 2008, à 19 h 30 à la cafétéria du Chapleau High School, Treasa Levasseur nous fera entendre sa voix puissante et unique qui a réduit au silence plusieurs salles de Whitehorse jusqu'à St-Jean, Terre-Neuve. Admission par passeport de saison.

Billet individuel disponible: 25,00 \$ par adulte, et 10,00 \$ par enfant.

Huron-Superior Catholic District School Board



Wishing All A Blessed Easter!



May the promise of the Risen Jesus come to life in your heart this Easter.

John Stadyk
Director of Education

www.hscdsb.on.ca

Marchy Bruni
Chairperson

The Northeast Superior Forest Community Corporation is seeking a

Administrative Assistant

The NSFC is looking for a highly organized individual that will excel in a fast-paced and ever changing environment. This position will provide front line customer service to the public, in person and on the telephone, as well as work directly with staff. The Administrative Assistant will be responsible maintaining files, managing the incoming mail, and processing accounts payables

The NSFC Corporation will be undertaking projects throughout the Northeast Superior Region, which encompasses the communities of Hornepayne, Wawa, White River, Manitouwadge, Dubreuilville and Chapleau.

Skills and Qualifications

- Advanced computer skills
- Experience working for a board or committee
- Ability to work independently and as part of a team
- Above average communications skills (both written and oral)
- Ability to manage multiple tasks
- Experience in an office setting
- Bilingual in French and English

Job Location: Township of Chapleau

Hours of Operation: Monday to Friday 8:30 to 4:30

Remuneration: \$35,000 per annum (4 Year contract)

Competition Closing Date: March 28, 2008

Please send resumés care of

Clara Lauziere, General Manager
Northeast Superior Forest Community
12 Birch Street East (Innovation Centre)
Chapleau, Ontario P0M 1K0

Or email: clauziere@township.chapleau.on.ca

IMPORTANT NOTICE REGARDING BUSINESS HOURS AT NORTHERN CREDIT UNION'S CHAPLEAU BRANCH

Beginning Monday, March 31st the business hours at Northern Credit Union's Chapleau Branch will be changing to:

Monday	10:00am to 4:00pm
Tuesday	10:00am to 4:00pm
Wednesday	10:00am to 4:00pm
Thursday	10:00am to 5:00pm
Friday	10:00am to 4:00pm



**NORTHERN
CREDIT UNION**

natural. human. resources.

Chapleau Midgets win gold

Cont'd from P.1
 blanked Dubreuilville 3 to 0 and East Nipissing defeated Powassan 6 to 5 in a closely fought game.

Chapleau took a two goal lead in the first period. The first goal was notched in by Trevor Guthrie with assists to Darrin White and Patrick Dillon while the second goal went to Ryan Connelly with assists to Louis Fuchs and Ryan Scheer. With 30 seconds left East Nipissing decreased the deficit with a goal from Jean-Michel Paulin and assists

going to Josh Barber and Spencer Garland.

With a little over seven minutes left in the second period Louis Fuchs with the complicity of Ryan Scheer and Jarret Hamel added to Chapleau's lead increasing it by two.

Trevor Guthrie added an empty net goal to seal the outcome with assists to Kyle Besnier and Darrin White.

As the tournament progressed, consistent penalty kill by the likes of Nels Lindquist, Justin Belec and Ryan Turcotte and

the relentless fore-checking by the Huskies led to favourable results.

Discipline was apparent as the tournament progressed and it seemed evident that the players answered the coaching staff's counsel. Penalties were not to be the order of the day during the Championship game. Chapleau was penalized a mere three times while East Nipissing was penalized once.

Emotions were high as teary eyed parents and players celebrated after

accepting their gold medals. The 2008 N.O.H.A. Championship is a bittersweet experience for nine players of this year's edition of the Chapleau Midget Huskies as this is the last year of their Chapleau Minor Hockey "CAREERS".

Kyle Besnier, Patrick Dillon, Perry Canning, Ryan Connelly, Ryan Scheer, Darrin White, Jonathan Champagne, Trevor Guthrie and Justin Belec are the players that will have played in their last N.O.H.A. Championship, on a winning



Accepting the Championship Trophy from N.O.H.A representative Fred Burrows, is team Captain Ryan Scheer accompanied by team manager Joyce Dillon.

McRorie live at the Moose Hall



Imagine if you will, a combination of Jimmy Page, Robert Plant, John Bonham and John Paul Jones rolled into a single body. We're not just talking personas here, but also the talents of each performer combined. Picture this and you've got McRorie in a nutshell.

Billed as a "One Man Live Band" he is a consummate entertainer capable of

capturing any audience, young or old. McRorie's non-stop repertoire moves with practiced ease from soft Beatles ballads to the raucous ranch of AC/DC. It's not everyday you come across an artist who jumps from one end of the musical spectrum to the other and manages to get away with it.

Fully mobile with a multiple FM pack on his back, he is able to take his show into the audience, giving a whole new meaning to the term audience participation.

By using electronic synthesizers and applying innovative technology, McRorie sings and plays each musical style in real time.

Wearing eight

specially designed sensors on various parts of his body, two modified midi keyboards, singing lead vocals, harmonies, and solo instruments with his

voice, McRorie coordinates the multiple parts of a musical composition totally live.

Coming to the Moose Hall on March 27th, 28th and 29th.

HOT DEALS



Snip N Style Tanning Salon

will now be open evenings

BY APPOINTMENT


Monday thru Thursday

Call 864-0581

to make your appointments

Live! Electronic

McRORIE



AT THE MOOSE HALL
 MARCH 27/28/29
 9 P.M TO 2 A.M
COME ONE...COME ALL!
 Thursday: FREE
 Friday and Saturday
 \$5.00 Cover Charge

"We Want To Be YOUR New Car Dealer"



Linda Stewart
Sales Manager



Marty Stewart
Sales Representative



Matt Stewart
Sales Representative



Dan Champagne
Sales Representative



Larry Dubeau
Sales Representative



2008 SPORTAGE
 FINANCING FROM \$0 DOWN
 \$251 PER MONTH
 \$3,250 CASH REBATE
 MSRP \$18,445

1-800-661-6907

Kia of Timmins

1285 Riverside Drive • 267-8291

kiaoftimmins.net

NO CREDIT?
NO PROBLEM!

KIA MOTORS

The Power to Surprise™

WeightWatchers®

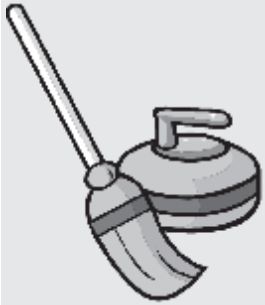
Join the prepaid Community Meeting in
 CHAPLEAU!

Wednesday March 26, 2008
 Registration: 6:00 pm Meeting: 6:30 pm
 Chapleau Civic Centre Council Chambers (downstairs)
 20 Pine St.

For details call: (800) 461-2246

©2007 Weight Watchers International, Inc. All rights reserved.

Curling News



past two weeks the league playoffs have been hitting the sheets.

Coming out on top for Monday night was Robert Jean's team over Tom O'Shaughnessy.

While on the Wednesday night, Tom O'Shaughnessy's team defeated Godfroy Pilote foursome.

The curling season has been fast and furious. During the



Wednesday Night Mixed Champions: Skip-Tom O'Shaughnessy, Vice-Bonnie O'Shaughnessy, Second-Gwen McKnight, Lead-Joanne Mione.



Monday Night Mixed Champions: Skip-Robert Jean, Vice-Kim Jean, Second-Megan Kirkey, Lead-Joanne Mione. Missing from photo alternate second-Christiana McNicol.

Chapleau Public Library News

On March 11th and 12th the Chapleau Public Library held a Cyber Camp for



Kyra Donovan trying out her new computer skills!

children in grades 2 to 6. The camp was designed to teach children how to use the computer and internet safely and properly. The 'Cyber Kids' that attended learned the basics of computers and all the different components a computer includes.

The Cyber Kids were taught the proper finger placement for typing and were able to practice them on a paper keyboard as well as on computer programs. How to use a search engine properly was also taught. Cyber Kids received informational sheets, completed fun work sheets, and used their new knowledge to try new tasks on the computer/internet. The cyber camp totalled 3 hours of fun training. Those who were able to attend both days received a certificate showing their achievement in the course. Way to go cyber kids! Be sure to keep your eyes peeled for any cyber camps in the future which will teach you about computers in a fun and exciting way!

Le Northeast Superior Forest Community Corporation est à la recherche d'un(e)

AGENT(E) DE PROJET

Le NSFC est à la recherche d'une personne dynamique pouvant exceller dans un milieu accéléré et toujours en évolution. Ce poste exige l'ardeur au travail et une fermeté dans son engagement afin de pouvoir améliorer les perspectives économiques de la région du Nord-est Supérieur.

L'agent(e) de projet sera donc responsable du développement et de la gestion de projets dans les domaines des produits forestiers autres que le bois d'oeuvre, la bioénergie, le bois, la politique gouvernementale et la recherche. Ces projets seront mis en oeuvre dans la région du Nord-est Supérieur englobant les collectivités de Hornepayne, Wawa, White River, Manitouwadge, Dubreuilville et Chapleau. En raison de son caractère polyvalent, il se peut que ce poste ait recours à des antécédents professionnels variés.

Compétences exigées

- Connaissance supérieure de l'informatique
- Emploi antérieur au sein d'un conseil ou d'un comité
- Connaissance des processus entourant le développement économique
- Compréhension de la situation actuelle touchant la région du Nord-est Supérieur
- Études postsecondaires
- Capacité de travailler seul(e) ou en équipe
- Aptitudes à communiquer qui soient supérieures à la moyenne (orales et écrites)
- Facilité avec une multiplicité de tâches
- Expérience dans un bureau
- Maîtrise du français et de l'anglais

Lieu de travail: Canton de Chapleau

Heures ouvrables: Lundi au Vendredi de 8h30 à 16h30 (quelques heures prolongées)

Rémunération: 55,000\$ par année (Contrat de 4 ans)

Date limite pour postuler: le 28 mars 2008

Veillez faire parvenir votre c.v. a/s de

Clara Lauziere, directrice-générale

Northeast Superior Forest Community

12, rue Birch est (Centre d'Innovation) Chapleau, Ontario P0M 1K0

Ou par courriel: clauziere@township.chapleau.on.ca



Learn ONLINE! This **NEW** e-Channel learning initiative provides learners with the opportunity to upgrade:

Free

- ✓ Reading
- ✓ Writing
- ✓ Math
- ✓ Pre GED Prep
- ✓ Essential Skills

Online Classes and/or Independent Study format available.

For more information please contact:

Heather Robinet at 519.482.1700

Visit our website www.learninghub.ca



www.thecentreforemploymentandlearning.ca



Call 1-877-510-510-2 and talk to a Registered Dietitian for free.

EatRight Ontario ontario.ca/eatright

Paid for by the Government of Ontario



VIA Rail told to improve Budd Car service

By Jim Prince

VIA Rail's Budd Car service between Sudbury and White River, which has come under some intense criticism lately, is the subject of a petition being circulated in this community.

Shirley Goheen, a local resident who

has spearheaded past efforts to maintain and improve the service, has placed the petition in several places in the community. It asks why the passenger service between Sudbury and White River is not being maintained. Several cancellations in the

past couple of years is not the service northerners were looking for when the service was reinstated on February 25, 1981.

This latest petition comes on the heels of a blistering letter to VIA in which Chapleau resident Mrs. Yvette Joyal

outlined a horror story of events during a recent trip on the Budd Car.

The petition will be in circulation until the end of this month, and Mrs. Goheen is urging residents to sign it so that it will have an impact on VIA not

only for the benefit of residents who rely on the service to get to Sudbury for medical attention, but for those up and down the line who operate summer camps. For many, it is the only overland connection.

In the meantime, Chapleau Mayor and council have thrown their support behind the latest efforts.

In a letter to VIA Rail, Mayor Earle

Freeborn stated action must be taken to ensure that this train receives the attention and servicing/ upgrades "that would enable this train to operate as it should, on schedule, warm and comfortable."

Brent St. Denis, the Liberal MP for Algoma-Manitoulin and Michael Brown, the MPP for the riding are also being asked for support.

Street name to honour War Veterans

By Jim Prince

When Chapleau's citizens gather next to remember those who fought on Canada's behalf in the wars, they will assemble on a street renamed to honour the Veterans.

As a result of a decision by the municipal Council last Monday, Young Street, which is the location of the Royal Canadian Legion Harry Searle Branch number 5, has been re-designated "Young Street-Veteran's Way." The addition to the Young Street sign to honour Canada's War heroes was made at the request of a local citizen and was

approved unanimously by the council at its regular meeting last Monday. It's expected the new street signs will be erected as soon as weather permits.

The move is in line with a long local tradition honouring those residents who voluntarily signed up and defended freedom. History documents many large local gatherings commencing with the First War and continuing to today, with a number of local men and women serving in the Forces.

The Chapleau Branch of the Royal Canadian Legion was the fifth Branch officially designated

at the organisation's founding convention in 1926. It was named in memory of Harry Searle, a C.P. Rail Ticketmaster from Chapleau and a veteran of WWI.

The Branch moved into the Young Street building in 1951.

A brief history printed in a Branch cookbook reveals the Young Street building was constructed in 1919 in memory of Lieutenant Lorne W. Nicholson who gave his life in the First War. His father, George B. Nicholson a local lumber magnate, had the building constructed and donated it to St. John's Anglican

Church. It was used as a Parish Hall where Sunday School and Bible Classes were conducted. The basement was used as fully equipped gymnasium.

In the late 1940's, unable to maintain the building, the premises were vacated and ownership reverted to the Township of Chapleau. In 1951 it was offered to the Legion Branch and was sold by the Township for the nominal sum of \$1.00 on October 26, 1951 and has been a focal point of the community ever since. The Cenotaph is located on the site.

The Northeast Superior Forest Community Corporation is seeking a

Project Officer

The NSFC is looking for a dynamic individual that will excel in a fast-paced and ever changing environment. This position will require hard work and a high level commitment to the improvement of the economic environment of the Northeast Superior Region.

The Project Officer will be responsible for developing and managing projects in the areas of Non-Timber Forest Products, BioEnergy, Wood, Government Policy and Research. These projects will be undertaken in the Northeast Superior Region, which encompasses the communities of Hornepayne, Wawa, White River, Manitouwadge, Dubreuilville and Chapleau. Due to the nature of this position, a variety of backgrounds may be appropriate.

Skills and Qualifications:

- Advanced computer skills
- Experience working for a board or committee
- Understanding of economic development practices
- Understanding of the current issues facing the Northeast Superior Region
- Post secondary education
- Ability to work independently and as part of a team
- Above average communications skills (both written and oral)
- Ability to manage multiple tasks
- Experience in an office setting
- Bilingual in French and English

Job Location:

Township of Chapleau

Hours of Operation:

Monday to Friday 8:30 to 4:30 (some extended hours)

Remuneration:

\$55,000 per annum (4 Year contract)

Competition Closing Date:

March 28, 2008

Please send resumés care of

Clara Lauziere, General Manager
Northeast Superior Forest Community
12 Birch Street East (Innovation Centre)

Chapleau, Ontario P0M 1K0

Or email:

clauziere@township.chapleau.on.ca

LARAMIE ST/SP 3EEE BY KODIAK



- Waterproof pit-stop leather, rubber toe guard
- Goretex lining, Cordura® padded tongue
- Aerospace lining, 200g Thinsulate® insulation, memory foam counter lining.
- Removable tri-density memory foam sock liner with arch support
- Silohwelt construction, flexible PVC welt w/EVA midsole with rubber outsole
- CSA approved Grade 1, ESR

OUR PRICE
\$179.98



Chapleau Village Shops

THE LOCAL MARKET PLACE

CHADWIC HOME, FAMILY RESOURCE CENTRE

Offers shelter, emotional support, and information for women and their children who are in crisis situations. We have a Toll Free Crisis Line which is staffed 24 hours a day. We can arrange for free transportation to the Centre for women who live in the Algoma/Chapleau area. We also offer support to women who live in the communities of Chapleau, White River, Dubreuilville, and Hornepayne through our Outreach Program. Our Outreach Worker travels to those communities to meet with women who need emotional support as well as information about their rights and options. If you need to speak with the Outreach Worker when she is in your community, you can call the Centre at any time to set up an appointment. You do not need to be a resident of the Centre in order to use our services. If you need someone to talk to or if you just need someone to listen, call our Toll Free Crisis line at 1-800-461-2242 or you can drop in at the Centre. We are here for you.

ALCOHOLICS ANONYMOUS
Offers help to anyone who desires to stop drinking. Open discussion meetings: Wednesday 7:30 p.m. & Sunday 2:00 p.m. Trinity United Church basement. Telephone contacts: 864-2321 and 864-1827.

ALCOOLIQUE ANONYMES
Offre de l'aide à celui ou celle qui désire arrêter de boire. Les rencontres ont lieu tous les mercredis soirs à 19h (7:00 p.m.) Au sous-sol de l'église Sacré-Coeur. Téléphonez au 864-2786.

Société Alzheimer Society meetings will be held at the Chapleau Hospital every 1st Monday of each month starting from 7:00 p.m. to 9:00 p.m.

Narcotics Anonymous offers help to anyone who desires to stop using drugs. Meeting every Thursday 7:00 p.m. basement Sacred Heart Church. Telephone contact 864-2786.

APARTMENTS FOR RENT

You need a decent apartment with 1, 2 or 3 bedrooms, fully or semi-furnished, or not, dryer and washer hookups, outdoor balcony, storage shed, private parking. Central location. Call Quality Rental at 864-9075 and leave message. Jun7

1-2 and 3 bedroom apts. and bachelor. For more information call 864-1148 or 864-4071(cell) Sep27

Village Shop Apts. Cozy 2 bedroom apt. for rent. Secured entrance. Fridge & Stove included. Call 864-1114. Mar22+

1 Bedroom Apartment, close to downtown. Fridge & Stove included; laundry facilities; secured storage; parking & outdoor plug-in included. Available immediately. Contact: Bertrand Apartments 705-864-0230. Mar28

1 bdrm apt. with fridge, stove and parking. Close to downtown and available immediately at \$395.00 per month. Call Con Schmidt. 864-0617. Mar29

Apartment, large for rent heated, furnished, parking, hock up, private entrance, downtown. Available immediately. Contact 12 Lorne South. Phone 705-864-0673

Large 1 bedroom apt. centrally located, fridge and stove included, storage, parking & outdoor plug-in. Available May 1st. Call 864-0677. Apr12

For best results, send your articles and photos electronically to chaexpress@sympatico.ca

HOUSES FOR SALE

Mobile home for sale or for rent to own. 4 Maple Leaf Drive. Wood Stove or oil heat. Serious inquiries. Call 864-2092. Mar29

Mobile home for sale at 3 Fontaine Dr. 12x60 addition. Electric furnace and wood stove. 2 sheds. Call 864-1509 after 5:30 p.m. Mar22

HOUSES FOR RENT

4 bedroom house. Downtown location. Wood electric heat. Detached garage. Available May 1. \$575.00 per month plus utilities. Call Twyla at Snip N Style 864-0581 or home 864-1679. Mar22

MAISON A VENDRE

Maison mobile à vendre ou à louer avec option d'achat. 4 Maple Leaf Drive. Chauffage au bois ou à l'huile. Persones interessées. Appelez 864-2092. Mar29

Maison mobile à vendre 3 Fontaine Dr. 12x60 avec addition. Chauffage électrique, poêle à bois. 2 sheds. Tel. 864-1315. Mar22

SERVICES

\$39.99 Telephone Service. \$20.00 Unlimited Long Distance. Transfer current phone number free. \$39.99 New activations. Toll free 1-866-391-2700. A Neighbourhood Connection. Apr26

WOOD STOVES

For Sale, New Blaze King Wood Stoves, shipped direct to Chapleau. For the best prices on Blaze King wood stoves call Rick Geroux: 705-779-3304. ctd

WANTED

House or cottage in Chapleau area. Mature, quiet, clean, professional couple looking to rent starting in April. Contact Rod or Lisa at 705-262-3787 anytime. Mar29

Have a safe weekend



BE WISE! ADVERTISE IN THE CHAPLEAU EXPRESS chaexpress @ sympatico.ca

✓ Tax Returns
✓ Program services

864-1558
Garry Bruneau

✓ Rapports d'impôts
✓ Services de programmes Mar12

SHOP LOCALLY!
WE ALL DEPEND ON IT!

BRUNEAU'S TAX PREP & EFILE

JOHN BRUNEAU
864-0404
101 LANSDOWNE ST. S.

INSTANT CASH REFUND - ELECTRONIC FILING
FAMILY AND SENIOR DISCOUNTS
FREE PICKUP AND DELIVERY FOR SENIORS
YEAR ROUND SERVICE

BRUNEAU'S TAX PREP & EFILE

JOHN BRUNEAU
864-0404
101 LANSDOWNE ST. S.

REMBOURSEMENT INSTANTANÉ - RAPPORT D'IMPÔT ÉLECTRONIQUE - RABAIIS FAMILIAL ET POUR PERSONNES ÂGÉES - LIVRAISON GRATUITE POUR PERSONNES ÂGÉES - SERVICE À L'ANNÉE

Computerized Lettering
Decals
Highway Signs
Custom Signs
Vehicle Graphics

Hours
Monday - Tuesday 9:00 a.m. to 5:00 p.m.
Friday - 9:00 a.m. to 2:00 p.m.

864-1870
jnsigns@gmail.com

SLOMA CLEANERS
Drop off at Between Friends (Cedar Grove)
Mon.-Fri. 8:30 to 12:00 & 1:00 to 4:30

BERRY'S FREIGHT SERVICES
TIMMINS - CHAPLEAU - TIMMINS

MONDAY TO FRIDAY
1lb. to 10,000 lbs.

FOR QUALITY SERVICES AT INEXPENSIVE PRICES GIVE US A CALL AT 1-705-264-4334

ALL ADS ARE ACCEPTED AT THE CHAPLEAU INNOVATION CENTRE
DEADLINE FOR RECEIVING ADS IS WEDNESDAY 4:00 p.m.

CLASSIFIED ADVERTISING RATES
Regular Classified Ads
First 25 words or less \$6.00
Each additional word \$0.15+GST

No refunds on cancelled classified ads.

NEW AT THE CHAPLEAU PUBLIC LIBRARY

New Books
The K Handshape - Maureen Jennings
Hitman - Bret Hart
The Naked Chef - Jamie Oliver
The Joy of Vegan Baking - Colleen Patrick-Goudreau

Travis Gendron
Sales Manager
61 Mission Road
Wawa, Ontario, P0S 1K0
Tel: 705-856-2394
Cell: 705-856-5595
Fax: 705-856-4290
travisgendron@missionmotors.com

MISSION MOTORS WAWA

NEW & PRE OWNED
FINANCE SALES

Goodwrench SERVICE CENTRE
WASHERS & DRYERS
316 TONING

PONTIAC **GM** **GMC** **CHEVROLET**

ALLEMANO & FITZGERALD
Barristers and Solicitors

MICHAEL C. ALLEMANO, B.A., L.L.B.
Certified by the Law Society as a Specialist in Real Estate Law

P.O. Box 10,
369 Queen St. E. Suite 103
Sault Ste. Marie, Ontario
P6A 1Z4
Phone (705) 942-0142
Fax (705) 942-7188

P.O. Box 1700,
55 Broadway Avenue,
Wawa, Ontario
P0S 1K0
Phone (705) 856-4970
Fax (705) 856-2713

Northern Lights Ford Sales
Andrew G. McKenzie
11 Years of Service

Highway 17, North
P.O. Box 1033
Wawa ON. P0S 1K0
Bus: 705.856.2775
Fax: 705.856.4862
sales@northernlightsford.ca

APPLIANCE REPAIRS
COLLINGS APPLIANCE SERVICE

Need appliance parts or repairs
Give us a call
1-705-264-1708

We also pick up old fridges for disposal

LVP **LABERGE VENNE & PARTNERS**
PROFESSIONAL CORPORATION
CHARTERED ACCOUNTANTS and CONSULTANTS
COMPTABLES AGRÉÉS et CONSULTANTS

Professional Services to Northern Ontario for 25 years
Financial Statements for Small Business & Corporations
Tax Returns - Personal, Corporate and Trust/Estate
Personal, Retirement, Estate Financial and Tax Planning Strategies
Business Projections, Plans and Financial Proposals
Computer Consulting
ACCPAC and Quickbooks

1970 Paris Street, Sudbury, Ontario P3E 3C8
(705) 523.0272 (800) 581.7510 www.lvppartners.ca

LVP **LABERGE VENNE & PARTNERS**
PROFESSIONAL CORPORATION
CHARTERED ACCOUNTANTS and CONSULTANTS
COMPTABLES AGRÉÉS et CONSULTANTS

25 ans de service professionnels pour les entreprises du Nord de l'Ontario
États financiers pour petites et moyennes entreprises et corporations
Rapports d'impôts personnel, de compagnie et de fiducie
Planification financière et fiscale personnelle et de compagnie
Projections financières, plans d'affaires et propositions de financement
Consultation en informatique
ACCPAC et Quickbooks

1970 rue Paris, Sudbury, Ontario P3E 3C8
(705) 523.0272 (800) 581.7510 www.lvppartners.ca

Aiming for 100,000 solar roofs

CNW/ - A new task force will help Ontario meet its target of 100,000 solar systems installed in households across the province.

Premier Dalton McGuinty announced last June that Ontario was setting a target of

100,000 installed solar systems, as part of the government's "Go Green" climate change strategy.

Most Ontario households spend about 20 per cent of their overall energy budget on water

heating - that's second only to space heating.

By supplementing existing electric or gas water heaters, solar thermal systems can dramatically reduce these costs. For example, each year a solar thermal system can save: \$325 and 600 kilograms of greenhouse gas emissions for a typical family of four with an electric water heater.

- \$200 and 760 kilograms of greenhouse gas emissions for a typical family of four with a gas water heater.

By comparison, an average-sized car generates about one tonne of greenhouse gas emissions a year.

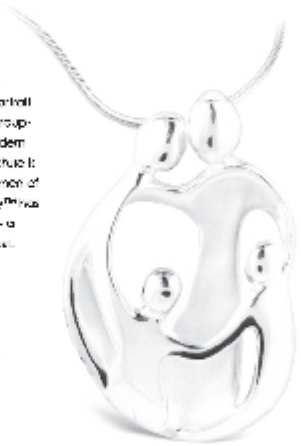
"Residential solar thermal systems can cut household water heating costs by half or more and can play an important role in helping Ontario go green," said Energy Minister Gerry Phillips. "I am very pleased to see this task force begin its work and I look forward to its recommendations."

Chapleau Village Shops NOW AVAILABLE

LOVING FAMILY FROM **\$49.⁹⁸**

...a lasting gift
for every generation.

Loving Family™ is a part of
one of the many unique groupings
that form the modern
family. Each item is a piece of
a personal gift for women of
all ages. Loving Family™ has
a lifetime guarantee - a
cassette return to life.



Precious Metal
- Peridot guaranteed to never tarnish

LOVING FAMILY

Le Northeast Superior Forest Community Corporation est à la recherche d'un(e)

Adjoint(e) administratif(ve)

Le NSFC est à la recherche d'une personne au sens d'organisation très développé pouvant exceller dans un milieu accéléré et toujours en évolution. Ce poste exige un contact direct avec le public en matière de service à la clientèle, que ce soit en personne ou au téléphone, en plus d'une interaction directe avec le personnel cadre. Parmi les autres tâches associées à l'adjoint(e) administratif(ve), mentionnons la tenue de dossiers, la gestion du courrier d'arrivée et le traitement des comptes créditeurs.

Le NSFC lancera des projets dans la région du Nord-est Supérieur englobant les collectivités de Hornepayne, Wawa, White River, Manitouwadge, Dubreuilville et Chapleau.

Compétences exigées

- Connaissance supérieure de l'informatique
- Emploi antérieur au sein d'un conseil ou d'un comité
- Capacité de travailler seul(e) ou en équipe
- Aptitudes à communiquer qui soient supérieures à la moyenne (orales et écrites)
- Facilité avec une multiplicité de tâches
- Expérience dans un bureau
- Maîtrise du français et de l'anglais

Lieu de travail: Canton de Chapleau

Heures ouvrables: Lundi au Vendredi de 8h30 à 16h30

Rémunération: 35,000\$ par année (Contrat de 4 ans)

Date limite pour postuler: le 28 mars 2008

Veillez faire parvenir votre c.v. a/s de

Clara Lauziere, directrice-générale

Northeast Superior Forest Community

12, rue Birch est (Centre d'Innovation) Chapleau, Ontario P0M 1K0

Ou par courriel: clauziere@township.chapleau.on.ca

Easter Weekend SPECIAL

Choose Do Not Pay for 12 months or
12 equal monthly payments with your
homecard on all furniture in store.

SPECIAL OF THE WEEK

2 pc. Living room set in Coco
Microfiber Fabric

Reg. \$2079.98 - Weekend Special \$1629.99

Brown Leather Chair & Ottoman
100% Bi-Cast Leather

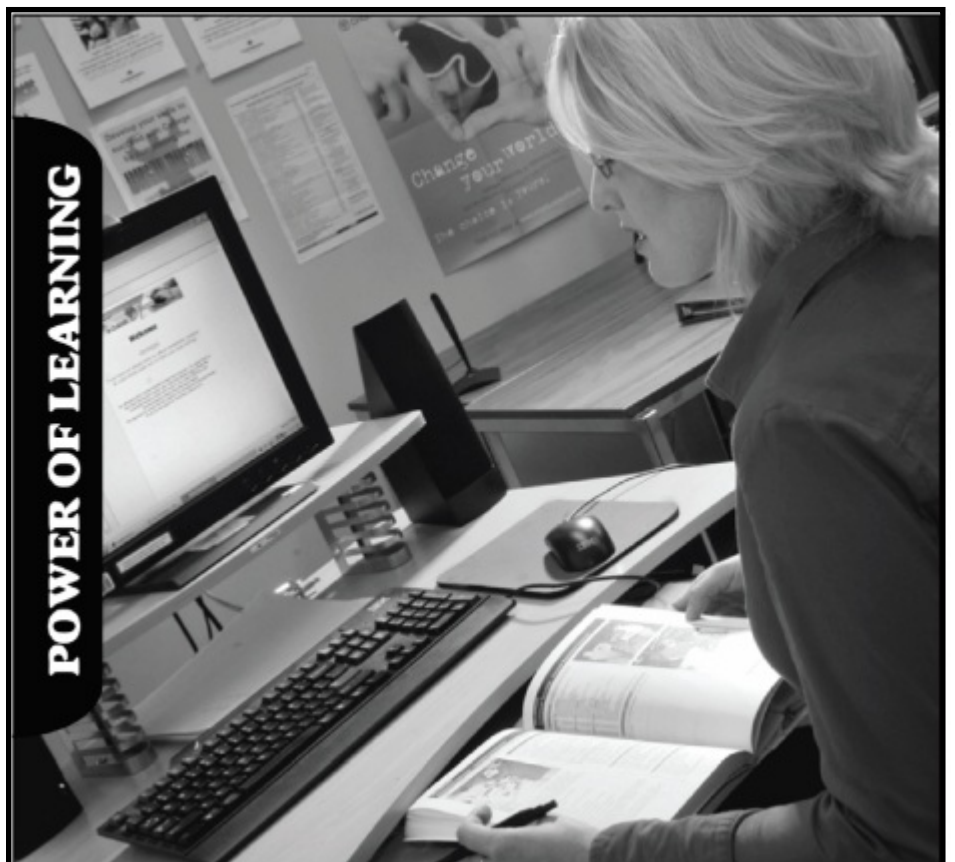
Reg. \$819.99 - Weekend Special \$499.99

1 Only Loveseat Cream Colour
100% Polyester Fabric

Reg. \$599.99 - Easter Special \$449.99



COLLINS HOME HARDWARE
864-1030



Your link to learning!

Contact North — your link to college and university programs and courses in Chapleau. With our communications technologies, you can attend classes and be connected to your instructor and fellow students wherever they may be in Northern Ontario. Our spring/summer course guide, Access, is now available. Inside, you will find a list of the full-time programs offered this fall.
Register now!

Rachel Charron
12 Birch Street East
P.O. Box 309
Chapleau ON P0M 1K0
☎ (705) 864-1410
☎ (705) 864-1404
chapleau@contactnorth.ca
www.contactnorth.ca

