

Talk about good coffee!

Miss Muggins Coffee and Fresh Donuts



# CHAPLEAU EXPRESS

PIZZA HUT & KFC  
There's a Reason We're Number 1  
864-0911



Vol. 10, Issue 35, May 13, 2006

# Legion to celebrate 80 years of service



Royal Canadian Legion Branch #5 building as it now stands

This year the Legion will celebrate 80 years of service to the community of Chapleau.

The Legion was founded in November, 1925 in Winnipeg, Manitoba as the Canadian Legion of the British Empire Services League (BESL) and was incorporated by special Act of Parliament, Charter issued in July 1926.

Mr. Harry Searle of Chapleau was present and Chapleau received its

Charter in 1926 as Branch No. 5 and was later named in his honour and is now known as Harry Searle (Ont. No. 5) Branch of the Royal Canadian Legion.

The principal objectives of the Legion were to provide a strong voice for World War I veterans and advise the government on veterans' issues. These goals were maintained in the years leading up to 1939.

During World War II, the Legion increased efforts to

help veterans and returned service members, provided education support and in-theatre comfort for serving personnel at home and abroad.

On October 14, 1949, The Great War Veterans' Association of Newfoundland amalgamated with the Canadian Legion.

During the Korean War, the Legion again offered support and comfort to troops while continuing efforts at home to improve assistance for veterans. Following the Korean

War, the Legion became increasingly involved in community service. The athletics program for youth, established in the early 1950s, has been one of the Legion's most successful programs. It has produced many top Canadian international track and field contenders and other prominent athletes. Over the years, the Chapleau Legion Branch has assisted the community in such things as veteran's

assistance, local and national charities, hospital, youth and education, poster and public speaking contests, sports and musical instruction.

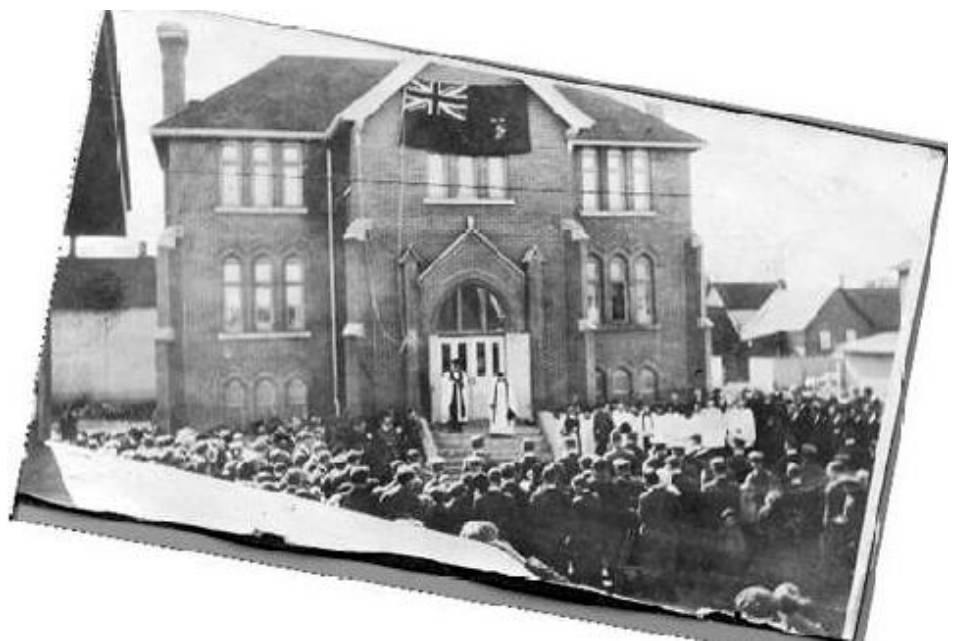
The Legion also launched many other community programs, including the National Unity and Seniors Programs and medical fellowships to promote geriatric and gerontology specialties across the country.

In 1960, the Queen gave consent to

attach the word "Royal" to the Legion's name.

As a charter member, Harry Searle (Ont. No. 5) Branch in Chapleau will join the rest of the Royal Canadian Legion in celebrating its 80th Anniversary with activities planned for the weekend of August 18-20, 2006.

Please watch for more articles and information in the coming weeks and months.



The unveiling of the dedication plaque over the entrance during the original opening of the St. Johns Parish Hall in 1919. (Photo from the George Collins Collection)



80th Anniversary  
August 18<sup>TH</sup> TO the 20<sup>TH</sup>  
2006

**The Chapleau Express**

P.O. Box 457  
Chapleau (Ont.) P0M 1K0  
Telephone - Fax : 705-864-2579  
e-mail : jprince@onTara.net

**Published every Saturday/Sunday**

**Deadline for receiving ads is Wednesday at 4 p.m.**  
The Chapleau Express is delivered free of charge to every household each Sunday. If you have any comments, please feel free to contact us.

**THANK YOU**

Thank you to Luc, Bunny, Orville, Debbie, several teenagers, the Hospital Staff, Joanna and Dr. Shapiro and to Howard for taking such good care of me afterwards

Shirley

**IN LOVING MEMORY  
of Lynda Joly**

**Who passed away May 8, 2002**

Not a day goes by that we do not think of you in some way or another. Today especially we remember just how much we miss your laughter, our chats, your shoulder to lean on and just being "you".

*If tears could build a stairway,  
and memories a lane,  
I'd walk right up to Heaven  
and bring you home again.*

Till we meet again, forever in our hearts.  
André, Shelley, Marilyn, Christine & Families

**LETTERS TO THE EDITOR**

On Wednesday May 3rd, I fell face first on Main Street. Several teenagers were at the Post Office bench. One young man came over and suggested he help me over to the bench where a few of his friends had rushed to get napkins and paper towels to assist in stopping the bleeding.

As I did not know any of them and this happened after 3

p.m., I owe them a big thank you and I would like their parents to know what kind, considerate young men they raised. A special thanks to Luc Servent, Bunny Swanson, Orville Robinson and Debbie Pellow for their assistance.

It's at times like this that a person can be proud of the Chapleau citizens.

Shirley Goheen

Engineering work was undertaken on the Chapleau overpass this week in order to assess the structural quality of the cement underlay of the bridge. Depending on the results, the Township of Chapleau will determine if a resurfacing of the bridge can take place this year, in consideration of the project costs and the availability of funds.

This year's municipal budget is expected shortly. Although last year's closure of the Domtar mill had little impact on the municipality's finances in 2005, it is anticipated that the effects will be felt this year.

The changes in property assessments

may be seen as the main issue for this year, but the increase in operating costs will more likely be the primary cause for concern with the municipal budget. The annual increase in administrative costs, paired with the rise in prices for essential items such as oil and electricity are most certainly forcing our elected officials to be more creative in their budgeting exercise.

The Township of Chapleau budget is slow to come this year (already 5 months into the year), but the Township Council's verdict on this year's tax bill and user fees will likely be released in the next week or two.

**Bridgework and penny pinching...  
an uneasy balancing act for the Township**



**Workers assessing structural quality of cement underlay of the bridge**



**Natural spaces protected through three-way cooperation  
Land Trusts, Province And Landowners Conserve Private Lands And Waters**

TORONTO — A partnership between the Ontario government and members of the Ontario Land Trust Alliance (OLTA) has protected more than 1,200 hectares (3,000

acres) of environmentally sensitive lands across Ontario worth more than \$4.5 million, Natural Resources Minister David Ramsay and Christopher Baines,

Chairperson of the Ontario Land Trust Alliance, announced today.

"I'm proud the province has helped Ontario's land trusts protect important natural areas through

the Ontario Land Trust Assistance Program, and that we will continue to assist them in the future," said Ramsay. "Land trusts, and the landowners who secure their lands, are playing a vital role

in conserving the province's biodiversity, ensuring significant natural features and wildlife habitats are protected for future generations."

The Ontario

Land Trust Alliance represents 34 non-profit, charitable organizations that work with conservation-minded landowners to acquire land in Ontario or

**Con't on P.4**

## Sports dress up day at C.H.S.



Friday, May 05, 2006 was Sports Dress Day. Students, staff dressed in sweaters, jerseys, hats of their favourite sport or team. Participants received treats at the end of the day. Prize winners were, Justin Saunders who was dressed in an Ottawa Senators uniform complete with a hat and flag and Elianne Belair who carried a mini basketball to match her jersey.

## Local man receives award



The Algoma District Elementary Teachers presented Mr. Wayne Black, Head of Carestaff, at Chapleau Public School with a Special Award for his dedication and hard work. Kim Russell, ETFO steward presented the certificate to Mr. Black.

## Character Education at Chapleau Public School



The students and staff of Chapleau Public School held its monthly Character Education Assembly on Friday, May 6. Entertainment was provided by Ms. O'Hearn's Grade One Class.

March Ballot Box Winners:

Raven Agawa, Maggie St. Amand, Mariah Clement, Ulric Larocque, Mike Paquette, Evan Morrison, Tim

Leishman, Sabrina Kanala, Emma Morrison, Sarah Lasante.

April Ballot Box Winners:

Lance Frazer, Megan Mac Gillivray, Melodie Levesque, Ulric Larocque, Kealan Tremblay, Jaime Fortin, Jesse McLaughlin, Cameron Kent, Bryan Law, Alexis Doyle-Evans.

Thank you to our sponsors:

Canadian Airventure,

Paquette's Camps, Superior Machine and Hydraulics, New Horizon Rebekah Lodge #341, Chapleau Village Shop, Model Drugstore, Chapleau Public School Council, Canada Brokerlink, Aux Trois Moulins, Chapleau News Depot.

Parents Next Character Education Assembly: Friday, June 23. All parents, guardians and friends are invited to attend.

## Le CSCNO offre une solution aux factures d'électricité exorbitantes

Le Conseil scolaire catholique du Nouvel-Ontario offre une solution aux taux d'électricité grimpants : Action Conservation!

Avec l'augmentation de 12.5 % annoncée cette semaine, le CSCNO passe à l'action, l'Action Conservation bien sûr! Une trentaine d'enseignantes et d'enseignants ainsi que des parents de la région est du Conseil scolaire et environ 60 élèves ont participé à des ateliers d'Action Conservation les 1er et 2 mai derniers.

Le CSCNO, en partenariat avec Union Gas, est le premier conseil scolaire de langue française en Ontario à participer au programme « Destination Conservation ».

« Action Conservation » est un programme éducatif et pratique qui propose des activités qui font la

promotion de la conservation de l'environnement dans les écoles. Le programme permet non seulement d'associer apprentissage pratique et conservation des ressources, mais il permet aussi au Conseil de réaliser des économies! Le programme vise les directrices et directeurs d'école, les enseignantes et enseignants, le personnel d'entretien, les parents et les élèves.

La conscientisation et la sensibilisation constituent la première étape d'Action Conservation, après quoi viennent les actes tangibles destinés à diminuer la consommation d'eau et d'énergie et la production de déchets. Voici quelques exemples concrets : éteindre les lumières,

fermer les ordinateurs le soir, promouvoir les goûters qui n'entraînent pas la production de déchets ou encore montrer aux élèves comment lire un compteur d'électricité et analyser la consommation quotidienne d'énergie de leur foyer.

Une école type qui met en œuvre le programme « Destination Conservation » peut s'attendre à réduire ses dépenses annuelles en services publics d'au plus 30 p. 100, soit environ 2000 \$.

Un atelier d'Action Conservation, un programme de conservation d'énergie de notre conseil scolaire, sera offert à Chapleau à des élèves des écoles Sacré-Coeur et Trillium, le vendredi 12 mai, de 9h à 12h. L'atelier aura lieu à l'école Sacré-Coeur.



**18<sup>e</sup> GROUPE SCOUT SACRÉ-COEUR**  
Chapleau, Ontario  
P0M 1K0



**À LA RECHERCHE D'ADULTES SÉRIEUX**  
**PRÊT À DONNER DU TEMPS À LA JEUNESSE!**

**EN ANIMATION OU EN GESTION**

pour les groupes d'âge  
7-8 ans - 9-11 ans - 1-14 ans

en moyenne 10 heures par semaine.

**L'INVESTISSEMENT EN VAUT LE RETOUR!**

SVP rejoindre Pierrette Ouellette au 864-1898  
pour renseignements

# Natural spaces protected through three-way cooperation

Land Trusts, Province And Landowners Conserve Private Lands And Waters

Cont'd from P.2

interests in land for the purpose of conservation. The areas protected include wilderness, agricultural, water and wetlands, and areas of ecological significance. Properties or

conservation easements are donated or willed by landowners, or are purchased by the land trusts, which hold the lands or easements in trust.

"The Ontario government has

provided critical support to the growing land conservation movement in Ontario," said Baines.

"This working partnership helps land trusts work with landowners to ensure there is a lasting legacy for future generations. Land trusts are the front-line delivery system that secures the land initially, trains the volunteers and monitors these properties in perpetuity. It's a big task, and the Ministry of Natural Resources has provided big help."

The Ministry of Natural Resources provides funding to the Ontario Land Trust Assistance Program, which gives grants to land trusts for the legal and other costs of

securing donations or purchases of ecologically significant lands or conservation easements. Since 2004, the ministry has contributed \$150,000 to the program, as well as providing funding for the development of best practices for land trusts. The ministry is contributing an additional \$150,000 to the program for the 2006/2007 and 2007/2008 fiscal years.

The ministry also worked with OLTAs when the province proposed changes to the Conservation Land Act and the Planning Act to simplify and clarify the use of conservation easements for land protection.

## Legion Donation



Gilbert Roy and Percy Encil, members of the Royal Canadian Legion (Harry Searle Branch #5), presented Gail Bignucolo, CEO, Chapleau Health Services with a generous donation of \$500 toward the Courtyard Project Campaign

**Looking for ways to give back to your community**

**OR MAYBE YOU NEED VOLUNTEER HOURS FOR SCHOOL!**

**Look no further**

*the Chapleau Nature Festival de la Nature*

**is currently looking for volunteers to help out with this year's festival. Anyone interested in volunteering please contact festival headquarters at 864-1126**

GROUPES DES PRODUITS FORESTIERS  
FOREST PRODUCTS GROUP

**Scierie de Chapleau**

## "Félicitations à tous nos employés"

Le rendement se poursuit avec le système de trois quarts horaire

La division des produits forestiers de Tembec Chapleau tient à féliciter tous ses employés et ses contractants de leur rendement exceptionnel qui ont permis à la scierie de franchir "un nouveau record de production" journalier.

**Scierie Quarts "A-B-C"**  
Lundi le 8 mai 2006

Le département de la scierie a établi un nouveau record pour "la meilleure production" pour trois quart horaire. Ceci représente la meilleure moyenne de production pour 24 heures d'opération consécutive.

631,404 pieds-planche / jour  
ou  
26,309 pieds-planche / hr (nets)

Durant cette même période d'exploitation, la scierie a affiché 41 jours sans signalement d'incident.

"Le système de trois quart horaire est en place depuis plus de treize mois. C'est très encourageant de voir que la scierie continue de produire et de dépasser les attentes budgétaire sois de 120%."

Tembec tient donc à reconnaître et remercier tous ses employé-e-s de leurs efforts et de leur apport, permettant ainsi à la scierie de franchir des nouveaux seuils de production.

"Des gens qui construisent eux-mêmes leur avenir"  
**Félicitations et merci !**

GROUPES DES PRODUITS FORESTIERS  
FOREST PRODUCTS GROUP

**Chapleau Mill**

## "Congratulates all Employees"

Three-Shift operation continues to be \*successful\*

Tembec Forest Products group takes this opportunity to congratulate all Chapleau employees and yard contractors for their outstanding performance and contributions that has now resulted in a new "Daily" production record.

**Sawmill Shifts "A-B-C"**  
Monday May 8, 2006

The Sawmill department achieved a new daily record production volume for a three-shift operating period. This new production record has now been recorded as our "Best" sawing average for a 24-hour consecutive sawing period.

631,404 FBM/day (net)  
or  
26,309 FBM/hr (net)

During this same operating period the entire mill achieved a safety performance level of 41 days without a recordable incident.

"Our three-shift operation has now been in place for over a thirteen month period, it is very encouraging to see that the mill continues to achieve and set new performance levels that are 120% of our budgeted target".

Tembec takes this opportunity to acknowledge and thank all employees for their outstanding contributions and efforts. We are well on our way in exceeding our targets on a permanent basis.

"A Company of People Building their own Future"  
**Congratulations and thank you !**

**Get out and enjoy Ontario's Provincial Parks 2006 Parks Season Opens In May**

TORONTO — Ontario's provincial parks are about to open for another exciting season, Natural Resources Minister David Ramsay announced today.

"With more than 100 operating parks, there are all kinds of ways to experience nature at its best," said Ramsay. "Whether you visit a park to enjoy the scenery, get away from it all or get together with family and friends, you'll be making memories that will last a lifetime."

banding demonstration later this month," Ramsay said. "Ontario's provincial parks are great places for people of all ages to get active," said Minister of Health Promotion Jim Watson. "They let you explore the beauty and diversity of our natural landscape while enjoying favourite outdoor physical activities." Campsite reservations are available up to five months in advance for a non-refundable reservation fee of \$12. Reservations can be made by calling 1-888-ONT-PARK (1-888-668-7275) or booking online at the Ontario Parks website at [www.OntarioParks.com](http://www.OntarioParks.com)

Most provincial parks in southern Ontario open on May 12, and the majority of parks in the north open on May 19.

Seeing the teaching rocks at Petroglyphs, taking in the lighthouse at Presqu'île or retracing voyageur canoe routes at Quetico are great ways to learn about Ontario's history. For opportunities to "get wild", take part in the wolf howls at Algonquin or prowl for owls at Rondeau.

"A number of our provincial parks offer excellent bird watching, including Port Burwell and Long Point, and Wheatley will feature a bird-

calling 1-800-ONTARIO or visiting the Ontario Parks website. Free copies of the 2006 Ontario Parks Guide are available from any provincial park office, tourism agency, government information centre and local chamber of commerce, or by either calling 1-800-ONTARIO or visiting the Ontario Parks website.

**Hometown Sears. Shop Locally.**




<p><b>All reg.-priced CRAFTSMAN™ lawn mowers powered by Honda engines on sale except all Sears 'Value' Programs with prices ending in .97</b></p> <p>FEATURING: <b>\$569.99</b></p> <p>SAVE \$80. CRAFTSMAN 5.5-HP SELF-PROPELLED LAWN MOWER #36577. Sears reg. 649.99. Save \$50 on EZ Walk model. #36545. Sears reg. 549.99. <b>499.99</b> Save \$70 on Blade Brake clutch model. #36555. Sears reg. 719.99. <b>649.99</b></p>	<p><b>1999.99</b></p> <p>SAVE \$400. CRAFTSMAN 23-HP LAWN TRACTOR</p> <ul style="list-style-type: none"> <li>powered by Briggs &amp; Stratton OHV V-twin engine</li> <li>spin-on oil filter</li> </ul> <p>#60593. Sears reg. 2399.99.</p> <p><b>Also, all reg.-priced tractor attachments on sale!</b></p>		
<p><b>299.97</b></p> <p>SEARS MORE VALUE PRICED RIGHT EVERYDAY CRAFTSMAN 6.5-HP GAS PUSH LAWN MOWER</p> <ul style="list-style-type: none"> <li>Complete Start system</li> <li>3-in-1 deck</li> </ul> <p>#36647. Hi-wheel model. #36648. <b>319.97</b></p>	<p><b>369.99</b></p> <p>SAVE \$60. CRAFTSMAN PUSH LAWN MOWER</p> <ul style="list-style-type: none"> <li>powered by Honda engine</li> <li>3-in-1 deck</li> </ul> <p>Sears reg. 429.99. #36544</p>	<p>save \$600</p> <p>CRAFTSMAN 'PREDATOR' 25-HP GARDEN TRACTOR WITH BRIGGS &amp; STRATTON V-TWIN ENGINE</p> <ul style="list-style-type: none"> <li>54" HD mower deck</li> </ul> <p>#60608. Sears reg. 3599.99. <b>2999.99</b></p>	<p><b>1549.97</b></p> <p>SEARS VALUE. PRICED RIGHT EVERYDAY CRAFTSMAN 16.5-HP TRACTOR</p> <ul style="list-style-type: none"> <li>powered by Briggs &amp; Stratton OHV engine. #60515. Auto-transmission model. #60565. <b>1749.97</b></li> </ul>
<p><b>449.97</b></p> <p>SEARS MORE VALUE. PRICED RIGHT EVERYDAY. CRAFTSMAN 6.5-HP SELF-PROPELLED LAWN MOWER</p> <ul style="list-style-type: none"> <li>powered by Briggs &amp; Stratton engine</li> </ul> <p>#36689</p>	<p>save \$500</p> <p>'YORKSHIRE' 13-PC. SLING PATIO SET WITH NON-RUST ALUMINUM FRAMES</p> <p>#98655. Sears reg. 1299.99. <b>799.99</b></p> <p>ONLY 66.67 MONTHLY*</p>	<p>save \$450</p> <p>'HAWAII' 12-PC. CUSHION PATIO SET WITH NON-RUST ALUMINUM FRAMES</p> <p>#98650. Sears reg. 1199.99. <b>749.99</b></p> <p>ONLY 62.50 MONTHLY*</p>	<p>Almost all reg.-priced grills on sale!</p> <p>Excludes all Sears 'Value' Programs with prices ending in .97</p> <p>FEATURING: save \$50 'BLUE EMBER' GAS GRILL BY FIESTA #30644. Sears reg. 649.99. <b>599.99</b></p> <p>ONLY \$50 MONTHLY* Save \$50 on natural gas model. #30654. Sears reg. 699.99. <b>649.99</b></p> <p>ONLY 54.17 MONTHLY*</p>
<p>When you use your Sears Card on all patio sets, gas grills, tractors and lawn mowers, you can choose... <b>Double Sears Club Points</b></p> <p><small>On approved credit. Offer does not apply to taxes, deferral or installment billing transactions, maintenance agreement, delivery or installation charges. For Catalogue and on-line orders, quote bonus offer #9416 22480 to receive your Double Sears Club Points. Excludes items in our Liquidation/Outlet stores. Offer ends Fri., May 19, 2006. Ask for details. Unless otherwise stated, optional financing programs do not qualify for Sears Club Points.</small></p> <p><b>OR 0% financing 'til May 2007*</b></p> <p><small>*Pay in 12 equal monthly installments, interest free, until May 2007. On approved credit, only with your Sears Card. Minimum \$200 purchase. \$55 installment billing fee and all applicable taxes and charges are payable at time of purchase. Monthly installments shown have been rounded up to the nearest cent. When billed, any unpaid portion of your Sears Card Account balance will attract credit charges, commencing on the billing date for such unpaid portion. Offer applies to merchandise in local Sears Dealer stores, Catalogue and on-line purchases. Ask for details. Payment options and plan details may be changed or discontinued at any time without notice. Ask about other payment options. Unless otherwise stated, optional financing programs do not qualify for Sears Club Points.</small></p>		<p>save \$50</p> <p>BROIL KING® 'CROWN' 25S' GAS GRILL #30611. Sears reg. 449.99. <b>399.99</b></p> <p>ONLY 33.34 MONTHLY* Save \$50 on natural gas model. #30621. Sears reg. 499.99. <b>449.99</b></p> <p>ONLY 37.50 MONTHLY*</p> <p>All gas connections should comply with local gas codes</p>	<p>save \$40</p> <p>KENMORE® GAS GRILL • 65,000 total BTU #30607. Sears reg. 389.99. <b>349.99</b></p> <p>ONLY 29.17 MONTHLY* Save \$40 on natural gas model. #30627. Sears reg. 429.99. <b>389.99</b></p> <p>ONLY 32.50 MONTHLY*</p>

Sale prices start Sat., May 6 and end Sun., May 21, or where Sears is closed, Sat., May 20, 2006, while quantities last. Some items may have been on sale during the past week.

**Sears Appliance & Catalogue at Chapleau Village Shops 864-1852**

**Sears**  
Good life. Great price.™

D05190060 © 2006. Sears Canada Inc.



Cancer Surgery | Cardiac Procedures | Cataract Surgery | Hip or Knee Replacement | MRI or CT Scan


**ontariowaittimes.com**

*It's worth knowing.*

If you or someone you know is waiting for one of the above procedures, it's worth knowing there's something you can do right now. Go to our new website for information on hospital wait times right across the province. You'll also find many helpful facts you and your doctor can use to make better decisions about your health care.


For more information call 1-888-779-7767 (TTY 1-800-387-5559) or please visit [www.ontariowaittimes.com](http://www.ontariowaittimes.com)

Paid for by the Government of Ontario.



--- Clip and Save ---  
**Notez les heures changer pour mai et juin**  
 Joujouthèque - Centre de la petite enfance de Chapleau  
**School's Cool** pour les personnes qui sont enregistré  
 -lundi, mercredi et vendredi après -midi  
**Heures d'ouverture aux publiques**  
 lundi 9h30-11h30  
 mardi 9h30-11h30 13h00-15h30 18h30-20h00  
 mercredi 9h30-11h30  
 jeudi 9h30-11h30 13h00-15h30 18h30-20h00  
 vendredi 9h30-11h30  
 samedi 9h30-11h30 13h00-15h00  
 Les après-midi de poupons sont les jeudi après -midi  
 de 13h00- 15h30, c'est aussi pour les mamans prénatal

--- Clip and Save ---  
**Changes to Hours For May and June**  
 at the Chapleau Toy Library/Ontario Early Years Program  
**Schools Cool** for those registered - Mon, Wed & Fri afternoons  
**Open to the Public:**  
 Monday 9:30-11:30a.m.  
 Tuesday 9:30-11:30a.m. 1:00-3:30p.m. 6:30-8:00p.m.  
 Wednesday 9:30-11:30a.m.  
 Thursday 9:30-11:30a.m. 1:00-3:30p.m. 6:30-8:00p.m.  
 Friday 9:30-11:30a.m.  
 Saturday 9:30-11:30a.m. 1:00-3:00p.m.  
**Babies Afternoon** now every Thursday 1:00-3:30 pm.  
 for mothers of infants/or for those expecting

 **NOUVEAUTÉS À LA BIBLIOTHÈQUE MUNICIPALE DE CHAPLEAU**

N'allez pas croire qu'ailleurs  
 l'herbe soit plus verte... - Murielle Levraud  
 Dans le pli des collines - Martine Noël-Maw  
 Les dames de Beauchêne Tome II - Mylène Gilbert-Dumas  
 Les dames de Beauchêne Tome III - Mylène Gilbert-Dumas  
 Le Musée des introuvables - Fabien Ménar  
 Des violettes en août - Jacques P. Ouellet  
 L'homme qui n'avait pas de table - Pierre Fortin  
 Femmes Libres (Biographie) - Aurine Cremieu  
 Terre des Autres - Sylvie Bédard  
 Obsessions - Aurélie Resch  
 L'homme au yeux de loup - Gilles Dubois  
 La vie, sens unique - Jean-François Somain  
 L'agonie des Dieux - Jean Hohsen Fahmy

**INFORMATION NOTICE FROM DR. SHAPIRO'S OFFICE**  
 Please note that the schedule for the Chapleau General Hospital emergency department posted in last week's newspaper does not apply to Dr. Stanley Shapiro's office. The office remains open as usual. To schedule an appointment call 864-1131

**AVIS DU BUREAU DU DR. STANLEY SHAPIRO**  
 L'horaire d'urgence de l'hôpital Général de Chapleau publié dans le journal de la semaine dernière ne concerne pas le bureau du Dr. Stanley Shapiro. Les heures de bureau demeurent les mêmes. Veuillez appeler 864-1131 pour prendre rendez-vous

**Intégration Communautaire Chapleau Community Living**

**ANNUAL GENERAL MEETING**

Refreshments available  
**Monday May 29th, 2006 7:00 p.m.**  
**At 92 Lorne St.(Common Room)**

**Purdy Flowers**  
 will be open for your convenience on  
**Mother's Day Weekend**  
**Saturday May 13 11:00 a.m. - 4:00 p.m.**  
**Sunday May 14 11:00 a.m. - 4:00 p.m.**

 **61 Birch St.**  
**864-1022**

**Dr. Allan MacIvor OPTOMETRIST**  
 Chapleau Medical Clinic, Broomhead Rd.  
**\*Tuesday, May 23rd, 2006\***  
 10:00 a.m. to 8:15 p.m.  
**FOR APPOINTMENTS CALL**  
 Toll Free 1-800-461-2883


Large Format Digital Printing - Sandblasted Signs - Billboards



**Toll free 1-866-546-9499**  
**Local 864-1870**  
**Fax 864-2709**  
**Email: jnsigns@onlink.net**  
 Vehicle Graphics - Printing - Highway signs- Custom signs

**Hours**  
 Monday - Tuesday 9:00 a.m. to 5:00 p.m.  
 Friday 9:00 a.m. to 5:00 p.m.

**BOTTLE DRIVE CUEILLETTE DE BOUTEILLE**  
 The grade 8 students at École Sacré-Coeur will be collecting empty beer bottles and cans from Chapleau residents on the evening of Tuesday May 23rd as a fundraiser for their class trip. If you would like to donate bottles, or cans, but will not be home that evening please place them outside your door.



Les élèves de la 8e année de l'École Sacré-Coeur ramasseront des bouteilles et cannettes de bières vides le mardi 23 mai dans le cadre d'une levée de fonds pour leur voyage en fin d'année. Si vous voulez donner des bouteilles ou cannettes, mais que vous ne serez pas là en soirée, veuillez les placer à l'extérieur de la porte.



**CANADA BROKERLINK (ONTARIO) Inc.**

**INSURANCE**

**Insurance Brokers**  
 Larry Donivan, Office Supervisor, Rosane Connelly, Account Manager, Suzanne Turcotte, Account Manager

No dot.com impersonal answers here.  
**Just great personal service with great rates.**

We will ask all of the right questions to make sure you get the best coverage and service for your needs. Then we will shop around to get the right price.


U Auto U Home U Commercial  
 24 hour claim service  
**PH: 864-1237 FAX: 864-2715**  
 18 Birch Street, Chapleau.  
 E-mail: ldonivan@brokerlink.ca

**EMPLOYMENT OPPORTUNITY**  
 O'Riley investments has an opening for a casual employee to work in the Pizza Hut KFC, Miss Muggins Operations.

The person hired will fill in for sick days and holidays, as well as a year long maternity leave to commence in August.

Please submit you resume to:  
 O'Riley Investments Limited  
 P.O.Box 122,  
 Chapleau, Ontario P0M 1K0

**Chapleau Soccer League annual registration**  
 The Chapleau Soccer League will be holding its annual registration on May 13 & May 27 from 11:00 a.m. to 2:00 p.m. at the Chapleau High School for all age groups. This includes the 14 and up age group for all students attending high school. Registration fees will remain the same as last season and a \$20.00 uniform deposit will be levied again this year. So come on out and participate in Canada's fastest growing sport.



**Registration Fees:**  
 Kinder kickers - \$30.00  
 7 to 9 - \$35.00  
 10 to 13 - \$40.00  
 14 & up - \$45.00

**For further information contact: Margaret Kanala at 864-2710 or Rolf Fuchs at 864-1377**

**Pimii Kamik Gas Bar & Gift Shop**  
**Located on the Chapleau Cree First Nation**  
**SUMMER HOURS**  
 will be from 7 a.m. - 10 p.m., 7 days a week  
**Drop by and check out our line of Authentic Native Crafts, Unique Gift Ideas, Jewellery, and Gift Certificates TOO!**  
 We also carry road trip snacks, which includes Subs, Chips, Pop, plus a whole lot more.  
 Your Propane Refilling Station

# THE LOCAL MARKET PLACE

# THE LOCAL MARKET PLACE

**ALL ADS ARE ACCEPTED AT Centre Culturel Louis-Hémon 69 Birch Street, DEADLINE FOR RECEIVING ADS IS WEDNESDAY 4:00 p.m.**

**CLASSIFIED ADVERTISING RATES**  
**Regular Classified Ads**  
 First 25 words or less \$6.00  
 Each additional word \$0.15+GST

**CHADWIC HOME, FAMILY RESOURCE CENTRE**

Offers shelter, emotional support, and information for women and their children who are in crisis situations. We have a Toll Free Crisis Line which is staffed 24 hours a day. We can arrange for free transportation to the Centre for women who live in the Algoma/Chapleau area. We also offer support to women who live in the communities of Chapleau, White River, Dubreuilville, and Hornepayne through our Outreach Program. Our Outreach Worker travels to those communities to meet with women who need emotional support as well as information about their rights and options. If you need to speak with the Outreach Worker when she is in your community, you can call the Centre at any time to set up an appointment. You do not need to be a resident of the Centre in order to use our services. If you need someone to talk to or if you just need someone to listen, call our Toll Free Crisis line at 1-800-461-2242 or you can drop in at the Centre. We are here for you.

**ALCOOLIQUES ANONYMES**  
 Offre de l'aide à celui ou celle qui désire arrêter de boire. Les rencontres ont lieu tous les mercredis soirs à 19h (7:00 p.m.) Au sous-sol de l'église Sacré-Coeur. Téléphonnez au 864-2786

**ALCOHOLICS ANONYMOUS**  
 Offers help to anyone who desires to stop drinking. Open discussion meetings: Wednesday 7:30 p.m. & Sunday 2:00 p.m. Trinity United Church basement. Telephone contacts: 864-2321 and 864-1827 Ladies call 864-0138

**APARTMENT FOR RENT**  
 You need a decent apartment with 1, 2 or 3 bedrooms, fully or semi-furnished, or not, dryer and washer hookups, outdoor balcony, storage shed, private parking. Central location. Call Quality Rental at 864-9075 and leave message. 030806 J122

**FOR RENT My13+**  
 Pineland Cottages has fully furnished one bedroom cottages available within town limits. Call 864-1396

**FOR RENT Ap29+ VILLAGE SHOP APARTMENTS**  
 Completely Renovated 2 bedroom split-level available June 1, 2006. Cozy 2 bedroom completely renovated available immediately. Call 864-1114 ask for Lucy.

**FOR RENT Jn3**  
 2 1 bedroom apt.. 1 2 bedroom apt. 5 bedroom house. Available immediately. Clean quiet building. Laundry & Parking facilities supplied. More info call 864-2670 after 5:00 p.m. Or leave message.

**FOR RENT Jn17**  
 2 bedroom apt. Winter plugin. Laundry Room on premises. Furnish or unfurnished. Rent start at \$400.00. Call 864-0138 or 864-1367

**FOR RENT**  
 Apt. for rent 1,2,3 bedrooms and a bachelor. For more information call (705)864-1148, 864-2454 or cell 864-4071. AU19

**FOR RENT Jn10**  
 1 bedroom apt, 2 bedroom apt. and 5 bdr. house available May 1. Fridge & stove w/d hookups. Parking with plug in. 864-2282/864-1022.

**FOR SALE BY OWNER**  
 Extremely huge house with apartment. Great starter home. Priced to sell. A must see. 28 Beech St. East. Call 864-1355 My20

**GARAGE SALE**  
 May 13th and 14th 10:00 a.m.. 7 Mile Lake #19. Table of hand knit items.

**FOR SALE My20**  
 1999 Nissan Maxima ES Automatic, V6, loaded, air, tilt, cruise, CD Bose System, power windows and locks, heated seats and mirrors, beige, 126000 km. Can be seen at 33 Grey St.S. 864-0390

**FOR RENT Jn3**  
 2 bedroom apartment available for rent. Semi furnished. Call 864-0966

**FOR SALE-A VENDRE**  
 Septic truck et/and maison mobile/mobile home. 4 Blue Jay Court. Appeler/Call Mario Gervais at/au 864-1473 S.V.P. laissez un message.

**FOR RENT**  
 Upper-floor, one bedroom apt. located just off main street. Fridge, stove, laundry facilities and heat included. Large storage space available. \$350.00 a month. Call 864-0511

**The Chapleau Express**  
 jprince@ontera.net  
 864-2579

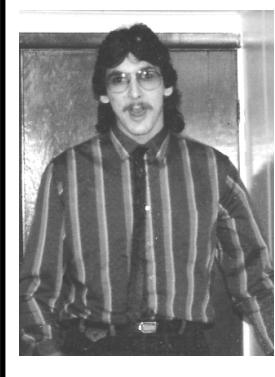
**NOTICE My6**  
 As of February 18, 2006, I, Alain Lavoie will not be held responsible for any debts incurred in my name without my permission.

**SLOMA CLEANERS**  
 Now in Chapleau on Tuesday & Thursday

**BERRY'S FREIGHT SERVICES**

TIMMINS - CHAPLEAU - TIMMINS  
**MONDAY TO FRIDAY**  
 1lb. to 10,000 lbs.  
 FOR QUALITY SERVICES AT INEXPENSIVE PRICES GIVE US A CALL AT 1-705-264-4334

**HAPPY BIRTHDAY DADDY!**



**Tired of shaving or waxing?**

Have a **hairless** summer!

- Permanent solution for hair & vein removal
- Remove hair from all parts of the body
- Safe for all skin type
- Makes you feel better and look younger

We guarantee 90% hair reduction Call for a **FREE** consultation

Until the end of May  
**15% OFF**  
 purchase of gift certificate

**BODY BEAUTIFUL LASER HAIR & VEIN CLINIC**  
 102B-85 Pine Street South • 360-4446

**ATTENTION**  
 CENTRE CULTUREL LOUIS-HÉMON  
 REGULAR BINGO RÉGULIER

**Le mercredi 17 mai, 2006**  
**WEDNESDAY, May 17, 2006**

MOOSE HALL - 7:00 PM  
 Nouveau format New Format

Info: 864-1126

**BIENVENUE À TOUS**  
**WELCOME ALL**

**NOTICE TO ALL CREDITORS.** Any claims to the estate of Céline Cloutier must be made in writing within 15 days, after this time all claims or any debts will be void. Please submit to P.O.Box 203, Chapleau, Ontario POM 1K0 c/o Lionel Cloutier and Frank Cloutier

**Charette Cleaning Systems**

**Ray will be in Chapleau the week of May 15 - 19**

**To book an appointment, please call 1-800-827-4490**

**Northern Lights Ford Sales**  
 Andrew G. McKenzie  
 11 Years of Service

Highway 17, North  
 P.O. Box 1033  
 Wawa ON. P0S 1K0  
 Bus: 705.856.2775  
 Fax: 705.856.4862  
 sales@northernlightsford.ca

**LAMON MOTORS LIMITED**  
 24 HOUR TOWING  
 CHEVROLET - OLDSMOBILE - PONTIAC - BUICK - GEO

**TRAVIS GENDRON**  
 Sales Consultant

P.O. Box 710  
 Wawa, Ontario  
 P0S 1K0

FAX: (705) 856-4290  
 BUS: (705) 856-2394  
 RES: (705) 856-1185

**GOING TO CHURCH**

**CHAPLEAU PENTECOSTAL CHURCH**  
 9 Elm Street (P.A.O.C.)  
 864-0828  
 Sunday School 9:45 a.m.  
 Sunday Services 11 a.m. & 7 p.m.  
 Family Night (ages 1-109)  
 Wednesday 7 - 8:15 p.m.  
 Pastor Dan Lee

**TRINITY UNITED CHURCH**  
 Corner of Beech and Lorne - 864-1221  
 Sunday Worship 11 a.m.  
 Sunday School Kindergarten to Grade 8  
 Nursery  
 Pastor Rolly MacLean

**OUR LADY OF SEVEN SORROWS PARISH PAROISSE NOTRE-DAME-DES-SEPT-DOULEURS (Foleyet)**  
 Liturgy of the World Sundays 11 a.m.  
 Liturgie de la Parole Dimanche 11h  
 Mass every 2nd & 4th Sunday at 4:00 p.m.  
 Messe sux 2e et 4e dimanche à 16h

**CALL COLLINGS APPLIANCE SERVICE**

**For all your appliance service needs give us a call. Remember we also remove freon from old fridges, and we sell parts for all makes and models of appliances.**

**Call 705-264-1708**

**COMMUNITY BIBLE CHAPEL**  
 Corner of King and Maple 864-0470  
 Communion Service 9:30  
 Family Bible Hour 11 a.m.  
 Including Sunday School Evening Bible Study and Ladies Bible Study during the week  
 Transportation available  
 Al Tremblay

**ST. MARY'S ANGLICAN CATHOLIC CHURCH**  
 78 Devonshire Street  
 864-0909  
 Sunday Service 10 a.m.  
 Rev. William P. Ivey

# ST. Denis deplures conservative attitude towards first nations

**REPORT from  
OTTAWA  
by  
Brent St. Denis**



Federal member of Parliament  
Algoma-Manitoulin-Kapuskinging

Prime Minister Stephen Harper has broken his election commitment to Canada's Aboriginal People by not including full funding for the Kelowna Accord in his first budget. There is no reason why Prime Minister Stephen Harper could not keep his promise to the First Nations of Canada given that his government has inherited the healthiest fiscal situation of any incoming government since Confederation,

and the money was set aside by the previous Liberal government for this purpose.

While my colleagues and I have been fighting for the rights of First Nations people, the NDP is just waking up to the fact that Prime Minister Stephen Harper is killing the Kelowna Accord and other commitments such as Child Care and Kyoto. The partisan manoeuvring of the Bloc and NDP triggered a pre-mature election that left

Canada's families and children in limbo. Now, our Aboriginal peoples are all but forgotten, and our environment is in more danger than ever before.

Liberal Indian Affairs Critic Anita Neville has been urging the Conservative government to honour the commitment to Aboriginal Canadians by implementing the Kelowna Accord with its full funding value. My colleagues and I feel that the signing of the Kelowna Accord provided an opportunity to see the prosperity gap eliminated between Canada's Aboriginal people and other Canadians. This Accord was truly historic and a great

source of pride for all Canadians. By refusing to honour this Accord, the Conservatives are showing a great disrespect towards our First Nations peoples.

The accord was signed by the Government of Canada, all of the First Ministers, and the Aboriginal leadership. Thanks to 13 years of sound Liberal fiscal policies, the Conservative government has enough money to meet its commitments. Seeing how the government is in such a strong fiduciary position now is not the time to be ignoring the landmark accord that would see this prosperity gap eliminated. We owe it to the Aboriginal

people of this country to follow through on the accord. To do any less would put the honour of the crown in great peril. There is absolutely no reason for Prime Minister Harper and the Conservative government to renege on this agreement. The landmark accord has the support of all 13 of the First Ministers, the Aboriginal leadership, and the Government of Canada.

The Kelowna Accord, signed in November by Aboriginal leaders, premiers and the previous Liberal government, dedicated \$1.8 billion over 5 years in funding for on- and off-reserve education. The Conservatives, in comparison,

announced \$150 million this year for "aboriginal investments," including education, water and communities, and did not define where this money would go or suggest any education strategy. The Kelowna Accord also called for \$600 million in housing, \$1.3 billion in health funding and \$400 million committed for safe drinking water. By not honouring the Accord - and by withholding these funds, the Prime Minister is ignoring First Nations, and confirming the worst fears that Aboriginal people, and many Canadians, had about him.

## READY FOR THE PROM?



**DRESSES**

Beautiful Grad Gifts  
Order Now



**SCHOOL RINGS**

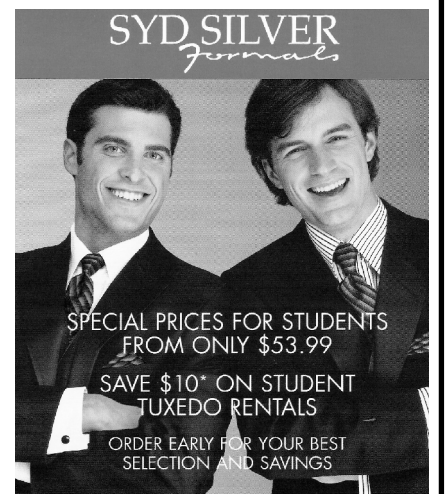
for Chapleau High School



École Secondaire  
Catholique Trillium



**RINGS**



**TUXEDOS**

**ROOTS**



CLASS OF 2006  
Celebrate  
your success  
with a ROOTS  
Class of 2006 watch

**WATCHES**



**Chapleau Village Shops**  
WORKWEAR • FASHIONS • JEWELRY • GIFTWARE  
864-1114

