

Talk about good coffee!

Miss Muggins Coffee and Fresh Donuts



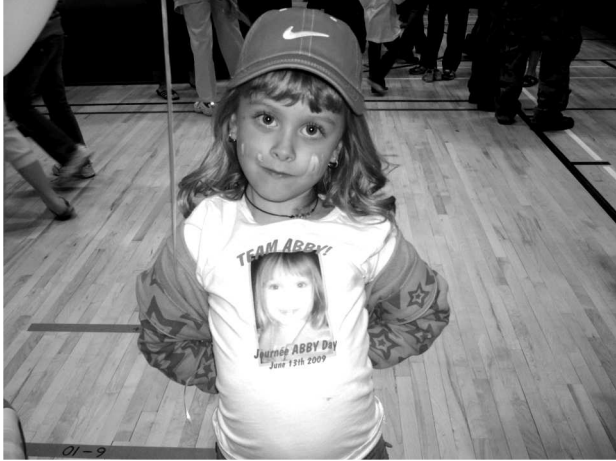
CHAPLEAU EXPRESS

Vol. 13, Issue 40, June 20, 2009

PIZZA HUT & KFC
There's a Reason We're Number 1
"0 TRANS FAT"
864-0911



Abby Day...what a HUGE success!!!



By **Raymond Martin-Venne**

It amazes me the power of a small community. I have only lived in Chapleau 4 years, and I have seen it happen when a family is in need and the community will come together to help. Well, I have to say this time I am extremely overwhelmed with the

generosity of the Chapleau Community. Abby Day was a huge success and it is all because of you. We were able to raise \$7200 and the money is still coming in for the Richard Family.

I have to give a special thanks to ALL the volunteers. Without you, Abby Day would not have

been possible. Thank you Ingo Weber and René Fortin of the MNR for the coolers as well as the huge tent and the MNR fire-crew who came out to set it up for the event. Thank You Smokey the Bear for making an appearance. We were very fortunate to have Esther Kovacs make a huge Carnival Card for everyone to sign at the door. Thanks to Chapleau Auto Parts for donating a helium tank for all the balloons. An amazing amount of bake goods and items were donated to the event, as well as several Penny Sale items. Winners of the Penny Sale are the following: Lorraine Lemieux, Ashley

Leach, Adyh Duffney, Alyne Fortin, Jeannette Bossé, Noella Lafrance, Autumn MacLean, Eathen MacLean, Jaqueline Prevost, Denise Cloutier, Brianna Gervais, Sue Lemieux, Sylvianne Morin, Tanya Keech, Rick Patenaude, Nancy Sylvestre, Nadine Pilon, Maggy St-Amand, Michelle Courtois, Lisa Pilote, Allison Hayes, Sasha Block, Adam Gionet, Annie Lafrance, Ruth Whitehead, Paulette MacLeod, Curtis Orton, Joël Lavallée, Rosie Cloutier, Amy Derosé, Carole Dionne, Rachel Pressé, Kathleen Synnette, Tuega Berthelot, Nathalie



Barsalou, Michel Servant, Pauline Cloutier and Lorraine Fortin.

Winner of the donated stuffed Nemo was Alissia Mallek. Also the winners of Guess the Candy Jar Game were Mireille Simard, Rosanne Turcotte, Lorraine Fortin, and Holly Canning. The winners

for the kids toys draw were Joey Girard, and Moe Lemieux.

I have to take the time to individually thank all the volunteers who gave their time. They are: Cindy Hautanen, Robert Brooks, Val Doyon, Leah Cyr, Trish Hamill, Lauren Hamill, Isabelle Con't on P.7

Chapleau Relay for Life: funding a cure for cancer

By **Gisele Barlow**
Chapleau held it's 2nd annual Relay For Life event on Friday June 12th-13th and once again it was a phenomenal success! Our community came

together and has raised approximately \$30,000 for Canadian Cancer Society research and special projects.

Where does the money go?

A large portion of the money raised at Relay For Life events goes towards research. I realize that we have heard that word so often it almost sounds empty, as though it doesn't have anything to with us on a personal level; but it does. I did some research of my own

and what I found was an extraordinary history of groundbreaking research all done by Canadian Researchers sponsored by the Canadian Cancer Society. This research directly impacts the lives, treatment and survival rates of people with cancer, and people who may get cancer, which in effect is all of us. To see what I have seen please visit www.cancer.ca and click on research. If there were a stairway leading to the

cure for cancer, research would be the steps, and every pledge or donation would be helping to build those steps. Never underestimate just how much your contribution is helping to find a cure for cancer.

Does any of the money raised return to the community?

Yes it does. Have you ever heard of or stayed at the Daffodil Terrace? For those of us who are unfamiliar, the

Daffodil Terrace is a place in Sudbury where cancer patients can stay while in treatment. A registered practical nurse is on duty 24 hours a day and CCS volunteers are always on hand to help patients through their cancer treatment. The Daffodil Terrace was built, equipped and furnished by the Canadian Cancer Society and then given to the Ontario Cancer Treatment and Research foundation (Now the regional

cancer program) for use by Cancer Patients. Many people from our community have utilized this service.

The CCS donated One Million dollars for the expansion of the Northeast Ontario Regional Cancer Centre in Sudbury.

The transportation program is a vital service provided to help people get to and from cancer related care. The Chapleau branch is **Cont'd on P.5**

Long Term Forecast

Saturday
High 27
Low 12


Sunday
High 31
Low 15

Monday
High 30
Low 16

Tuesday
High 29
Low 16

Wednesday
High 25
Low 13

Thursday
High 22
Low 12



RACINE LAKE CAMPGROUND
SUMMER BOOKINGS STILL AVAILABLE, BUT GOING FAST!!
CALL 864-4318
SHOWER AND LAUNDRY FACILITIES; GENERAL STORE;
GAS AND PROPANE ON SITE!
LARGE SELECTION OF FIREWORKS FOR SALE!
WE ALSO NOW CARRY
AN ASSORTMENT OF CAMPING AND FISHING GEAR
COME IN AND CHECK OUT ALL THE NEW ITEMS IN OUR STORE!!



Positions are being filled!



Left to Right: Mrs. Tracy Martel, Ms. Mandy Donovan, and Ms. Nicole Labranche

Services de santé de Chapleau Health Services is pleased to announce our vacancy rate is only 11.84%. This represents only 13 vacant positions. We need to recruit for an Occupational Therapist, a Physiotherapist, family physicians, Nurse Manager, Part-Time RN's, Part-Time RPN's, and 2 Full-Time Nurse Practitioners (Foley and Chapleau).

Our focus is to not only recruit for the vacancies still outstanding but to plan for the future to ensure the numbers of staff employed at SSCHS will be able to address our future healthcare needs. Listed below are some initiatives that we have started or completed this year to help us address our needs.

We are planning to enter into a

partnership with Northern College to offer a Practical Nursing Program on site. We have sent surveys throughout the community as the results from this will help us determine if there is an interest and if any upgrading is required before the RPN program can start.

In the past year, there were 2 successful candidates for our new scholarship program; Ms. Julie Gervais and Mr. Marc Fortin. For the 2009/10 school year, the deadline for submitting an application to the Registered Nursing, Registered Practical Nursing, Physiotherapy, and Occupational Therapy Scholarship is June 9th, 2009. Applications can be found on our website, www.sschs.ca

We are now

please to announce we have recruited two local residents, Mandy Donovan and Nicole Labranche, in the Diagnostic Imaging department. We can offer services in both official languages during all hours of operation. Welcome aboard!

We have contacted several colleges and universities to show our interest in having preceptor students coming to Chapleau for their clinical placements. We have also sent brochures and flyers so the students will have information at their fingertips when they need to choose where to do their placement. We have also attended the Cambrian College Career Fair in November and promoted our community and organization to the students. So far this

year we had 3 nursing preceptor students. Hopefully in the future we can welcome more students to our organization for their clinical experiences. Working at Chapleau Health Service will give these students a diversity of experiences in the Long-Term Care, Acute, and emergency department. Perhaps they may stay after graduation!

In addition to posting our nursing and physician employment opportunities with Health Force Ontario, we are also participating with the New Nurse Graduate Guarantee initiative which is funded by the Ministry of Health & Long-Term Care. This program helps recent nursing graduates obtain full-time employment and work experiences as well as helping

The Chapleau Express
 P.O. Box 457
 Chapleau (Ont.) P0M 1K0
 Telephone - Fax : 705-864-2579
 e-mail : chaexpress@sympatico.ca
Published every Saturday/Sunday
Deadline for receiving ads is Wednesday at 4 p.m.
 The Chapleau Express is delivered free of charge to every household each Saturday. If you have any comments, please feel free to contact us. Subscriptions: **\$70.00 per year (Canada) \$150.00 U.S per year (U.S.A)** Canadian Publications Products Sales Agreement #30183799

Ads and advertisements can be dropped off at the Chapleau Innovation Centre Monday to Friday 9:00 a.m. to 4:00 p.m.

employers fund for at least 6 months of full-time employment. For more information on this program and Health Force Ontario, please browse their website, <http://www.healthforceontario.ca/>

Contact has been made with Chapleau Cree First Nation, Community Care Access Centre, and Sudbury District Health Unit to see if they have any nursing vacancies. To date there are no vacancies within those organizations but possibly in the future we can work together to see if we can help each other recruit for vacancies. For example, if a person who wishes to relocate to Chapleau and we could only offer a Part-Time position, we can

also inform them that they can apply to another organization that is recruiting for part-time staff as well. It is possible that this individual can work for two organizations.

As you can see there are many ideas and partnerships that are developed to help with the recruitment of staff. If you have any suggestions, please let me know as every idea may open a new opportunity for us. Please contact the Human Resources Coordinator at chapeauhr@sschs.ca.

Classified ads **WORK**

Congratulations



Julia Bignucolo has recently graduated from the University of Western Ontario with a 4 year Bachelor of Management & Organizational Studies (BMOS) with a specialization in Organizational & Human Resources. Julia plans to further

her studies at Western for her designation in Human Resources.

Michela Bignucolo has graduated from École Secondaire Catholique Trillium and will further her studies at Fanshawe College in London. She plans to take courses in Business Administration.



Congratulations to both from mom & dad (Richard & Lynn) and from all your family. You make us proud!

OBITUARY

Connelly, Brian Francis

Peacefully at home on June 11, 2009 in his 61st year. Survived by his mother Rose Connelly of Chapleau, brother of Joseph Connelly, Kingston, Jim Connelly, Sarnia, Emmett Connelly, Daniel Connelly (Rosane), Rosemarie Connelly-Bertrand (Graham), Patrick Connelly (Louise), Maureen Connelly-Travis (Keith), Kevin Connelly, all of Chapleau, and many nieces and nephews. Predeceased by his father Timothy Connelly (1975).

A private family service will be held at a later date. Memorial donations made to the Chapleau Pentecostal Church Food Bank would be appreciated by the family.

GOING TO CHURCH

Catholic Church
SACRED-HEART OF JESUS PARISH
PAROISSE SACRÉ-COEUR DE JÉSUS
 26 Lorne Street North
 OFFICE- 21 Lansdowne St.N.
 864-0747
 Sunday/dimanche
 9:30 a.m. English
 11:00 a.m. Français
 Weekdays Mon-Sat
 en semaine Lun-Sam
Fr. Jacques Fortin

ST. JEAN DE BRÉBEUF (Sultan)
 Liturgy of the Word
 Liturgie de la parole Every 3rd
 Saturday 7 p.m. Bilingual
 Tous les 3e samedis 19h
 Bilingue
 Permanent Deacon Ted
 Castilloux

Diocese of Moosonee
Anglican Church of Canada
ST. JOHN'S CHURCH
 4 Pine Street West
 864-1604
 Sunday Service
 10:30 a.m.
 Rev. Bruce Roberts

ST. MARY'S ANGLICAN CATHOLIC CHURCH
 78 Devonshire Street
 864-0909
 Sunday Service 10 a.m.
 Rev. William P. Ivey

CHAPLEAU PENTECOSTAL CHURCH
 9 Elm Street (P.A.O.C.)
 864-0828
 Sunday School 9:45 a.m.
 Sunday Services
 11 a.m. & 7 p.m.
 Family Night (ages 1-109)
 Wednesday 7 - 8:15 p.m.
 Pastor Dan Lee

TRINITY UNITED CHURCH
 Corner of Beech and Lorne
 864-1221 Sunday Service and
 Sunday School 11:00 a.m.
 Anna Chikoski
 Soup Kettle every 2nd Wednesday
 of the month
www.angelfire.com/on/trinityuc

OUR LADY OF SEVEN SORROWS PARISH
PAROISSE NOTRE-DAME-DES-SEPT-DOULEURS (Foley)
 Liturgy of the World Sundays
 11 a.m.
 Liturgie de la Parole
 Dimanche 11h
 Mass every 2nd & 4th Sunday
 at 4:00 p.m.
 Messe sux 2e et 4e dimanche
 à 16h

COMMUNITY BIBLE CHAPEL
 Corner of King and Maple
 864-0470
 Communion Service 9:30
 Family Bible Hour 11 a.m.
 Including Sunday School
 Evening Bible Study and
 Ladies Bible Study
 during the week
 Transportation available
 Al Tremblay

Who Are the Metis?



By Dave Hamilton

The Metis are one of the three aboriginal groups recognized in Canada which also includes First Nations and Inuit people. The first Metis were descendents of marriages between First Nations peoples primarily Cree, Ojibway or Saulteaux (Plains Ojibway) women with French fur traders from the

North West Company or Scottish and English fur traders from the Hudson's Bay Company.

The origin of the Métis Nation is rooted in the historical fabric of Canada. It was along the fur trade routes through Ontario and the Prairie Provinces that they evolved into a new and distinct Aboriginal nation, particularly in

the valley of the Red River of Southern Manitoba.

From the mid-1600s to the late 1800s, the fur trade population came increasingly from these mixed-blood offsprings. As people of mixed ancestry increased in number and married amongst themselves, they developed a new culture, neither

European nor Indian, but a fusion of the two and a new identity as Métis.

The Metis were known by many names throughout history including half breeds, mixed bloods, bois brûlés and to other First Nation Peoples they were known as the "Flower Bead People" which made reference to the intricate European style floral patterns they decorated their moccasins and clothing with. To others they were known simply as "the buffalo hunters".

Some Metis had farms along the Red River, but the majority were first and foremost hunters. The first buffalo hunts took place in and around the

Red River Valley of Manitoba in the early 1700's. By the 1820's buffalo were becoming scarce in Southern Manitoba so the Metis were forced to leave their settlements in search of game. Hundreds of Metis and their First Nation allies would band together for the semi-annual hunts which were held in the spring and fall of the year. The groups were called brigades; some headed west into Saskatchewan and others south into what is now the State of North Dakota in search of buffalo. Some of these hunting brigades were as large as 1000 individuals not including horses and draft animals. By the mid

1860's the great buffalo herds of the North American plains were in decline and the Metis had to travel further away from their settlements in the Red River country. Many Metis groups remained on the prairie through the winter and became known as the hibernants or winterers.

Never to return to their homes in Manitoba opting instead to start new communities and continue to hunt the declining buffalo in what now the provinces and states of Saskatchewan, Alberta, Montana and North Dakota. By 1880 the buffalo were gone from the Canadian prairie and were

Cont'd on P.6

Sunday June 21st is National Aboriginal Day 2009

By Marshall Tannahill

National Aboriginal Day is celebrated on June 21st, the summer solstice, and this Sunday is the day! The summer solstice will be greeted as it has been since time immemorial with a sunrise ceremony and a day of splendid celebration.

An Inter First Nation Ad Hoc Group has partnered with Celebrations Canada, area First Nations and First Nation organizations to make this year's National Aboriginal Day festivities possible in the Chapleau area. It has again been arranged for Chapleau

Cree First Nation, Fox Lake Reserve, to be the locale where all area Aboriginal people, living both on and off reserves and their friends can all come together in celebration of this special day.

The day will start very early with pre-dawn preparations by Elders (starting just prior to 5:00 AM) in advance of the 5:34 AM EST sunrise for Chapleau's specific longitude and latitude. The sunrise ceremony will take place at the powwow grounds on Margaret Ann Road on the Fox Lake Reserve.

The Aboriginal Peoples' Alliance of Northern Ontario

(APANO) building at #8 Lorne Street South in Chapleau will be open briefly in the very early morning (4:30 AM) in advance of a van making it possible on one very early run (5:00 AM) for persons living in town to be able to make it to the sunrise ceremony. A schedule for the Brunswick House First Nation's three main bus runs will be posted on the APANO door, along with a roster of the full day's great activities.

Children, accompanied and attended to by a responsible adult, have the mid-morning games with prizes at the beach area to look

forward to, followed by a tasty BBQ lunch, a family baseball game and the annual NAPS Aboriginal Day Bike Rodeo. Kids are encouraged to bring their bikes! Amongst other fun, adults and young people will enjoy a morning tug-of-war, canoe rides and races and, at 3:00 PM, bingo for prizes.

This year

marks the continuation of special initiatives in the united endeavours between local First Nations' peoples.

Elders' teachings will be held in the ceremonial grounds teepee commencing at 3:00 PM and will be followed by an inter-community potluck feast at the Isiah Saylor's Complex at 5:00 PM. Gathering

for the sunset ceremony will commence at around 9:00 PM at the powwow grounds teepee.

A piece of celebration cake awaits everyone. Be on the lookout for the day's activity schedule and poster wherever better Chapleau postings are usually to be found!



Angelo Bucciarelli - Financial Security Advisor
will be in Chapleau June 28 & Monday June 29th

Wealth Creation	Wealth Protection
Retirement Planning	Life Insurance Planning
Investment Planning	Living Benefits
	Estate Organization

By appointment
1-519-852-7676

Email: angelo.bucciarelli@freedom55financial.com
Website: www.angelobucciarelli.com

 <p>Ontario Licenced Motor Vehicle Inspection Station</p>		<p>Chapleau Cree Auto/Truck Monday - Friday 8:30 a.m - 4:30 p.m. "Preventive Maintenance keeps you on the road" FOX LAKE RESERVE</p>	<p>CALL 864-9090 for an appointment</p>
--	---	--	--

Tembec takes further sawmill downtime in response to weak market conditions

Tembec today announced a series of market related temporary shutdowns affecting all its sawmills in Northern Ontario.

The affected operations include the Kapuskasing sawmill which will shut down for a period of one week beginning July 6, the Chapleau sawmill for three weeks beginning June 29, and the Cochrane and Hearst sawmills which will each go down for six weeks beginning June 22 and July 6 respectively. These idlings will affect employees at all levels at the sawmills, as well as the forestry operations supporting

these facilities. Approximately 500 employees will be impacted by these combined temporary shutdowns.

"These shutdowns are a consequence to the rapid and significant appreciation in the value of Canadian dollar, continued weak markets for lumber, and the related need to manage inventories and working capital," said Dennis Rounsville, Executive Vice President and President of Tembec's Forest Products Group. "We will continue to monitor economic and market conditions closely and

will manage operating rates accordingly."

Employees at the affected Ontario sites have been advised of the Company's decision.

The Company also confirmed that employees at its sawmills in Elko and Canal Flats, British Columbia were advised that those sites would be idled effective June 15 for a minimum of three weeks for similar reasons.

The affected Northern Ontario sawmills have a total annual capacity of 550 million board feet and the B.C. mills a combined annual capacity of 450

million board feet.

Tembec is a large, diversified and integrated forest products company which stands as the global leader in sustainable forest

management practices. The Company's principal operations are located in Canada and France. Tembec's common shares are listed on the Toronto Stock Exchange under

the symbol TMB and warrants under TMB.WT. Additional information on Tembec is available on its website at www.tembec.com.

HELP WANTED

COLLINS HOME HARDWARE

Full time position.

Responsible person to work as sales clerk and part time office work.

See Doug Collins with résumé



Relay for Life, a survivor's tale

Just over a year ago, a friend asked me if I'd like to be on her team for the first Relay for Life to be held in Chapleau. She explained to me that this was going to be a big event to raise funds

to fight cancer. I thought about all the people I knew who over the years had been diagnosed with cancer. I agreed to participate, took a sponsorship sheet and started getting

pledges.

Just three weeks before the Relay, I was diagnosed with cancer. I never expected to get cancer, I guess no one does. Cancer can hit anyone at any time. After

being operated on and returning to Chapleau, I was asked if I would like to join the cancer survivors at the Relay; this gave me a whole new perspective of the event. I was impressed by the strength of the

survivors. As we made the first lap, I was moved by everyone cheering us on. The number of candles around the track was incredible. Each candle was a reminder of someone who had passed on, or someone fighting cancer.

Over the past year I have undergone chemotherapy and radiation. My surgeon commented that I was lucky to be living in Canada which has a good health system that covers cancer drugs because he told me my treatments would cost over \$65,000.00. It is very expensive to treat

cancer and there is still a lot of research that needs to be done to find a cure; this is why the Relay for Life is so important. I think it says a lot for our community, when you see young and old come together to help raise funds to fight this disease. As a cancer survivor, I want to thank the committee members who are bringing this event to our town for the second time, to everyone who participated last year and to those who will raise funds again this year. Together we can make a difference.



**FATHER'S DAY
WEEK-END BUFFET
(ALL YOU CAN EAT)
at
Hongr's
Bar & Grill**

*Saturday & Sunday Nights
June 20th & 21st, 2009
4:30 p.m. to 7:30 p.m.
Telephone 864-1311*

Reservations recommended but not required

Boating Safety Course

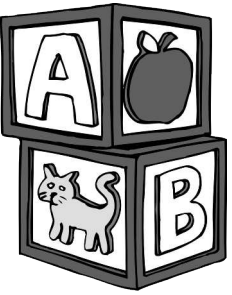
Receive the Pleasure Craft Operator card
Monday, June 22nd at 6:00 PM
Cost: \$30

To register, contact Linda at 864-9434 or drop in at the Chapleau Innovation Centre

**Cours de sécurité nautique (bateau)
en FRANÇAIS**

Pour obtenir la carte de conducteur
d'embarcation de plaisance
Le mercredi 24 de juin
Frais: 30\$

Pour vous inscrire, communiquez avec Linda au
864.9434 ou venez au centre d'innovation de
Chapleau.



The Chapleau Child Care Centre

would like to assist you

to take care of your children while you work, attend school or enjoy that much-needed break.


We offer a variety of early learning and care programs for children from birth to twelve years of age.

Services are available in French and English from 7:30 a.m. to 5:30 p.m. Monday to Friday each week.

We also offer different user options, family rates and subsidy.

Stop by the Centre at 28 Golf Road or call 864-1886 for more information!!

Let us be a part of your child's learning experience!



Chapleau Relay for Life: funding a cure for cancer

Con't from P.1

working on implementing this program in the fall of 2009. Last year in Northeastern Ontario the Society invested \$664,666.00 in transportation services for cancer patients.

The peer support program was launched in Chapleau last year and provides an opportunity for survivors to share their cancer experiences and provide emotional support to newly diagnosed patients.

The Society offers the smokers helpline telephone service to help smokers develop a structured quit plan.

The Canadian Cancer Society provides both one to one phone based and in person support. The cancer information service toll free number is available Mon-Fri 9:00 a.m. to 6 p.m. to provide information about cancer. 1 888

939-3333.

Dr. Hoyn Lee, a researcher at the Northeastern Ontario Regional Cancer Centre has received CCS research grants in the amount of \$940,047.00 for his research.

Every year the society invests over \$5 million to support cancer clinical trials that test new and better ways to prevent, diagnose and treat cancer. In 2008 this funding enabled 24 trials to be offered in the Northeast Region, (10 in Sault ste. Marie, and 14 in Sudbury) to patients facing the disease or people at high risk of developing cancer.

Fighting cancer is also about preventing people from getting it in the first place, that is why the Canadian Cancer Society also invests Relay for Life dollars to advocate for healthy public policies that will prevent

cancer in the future.

If you have cancer, survived cancer or will one day suffer from cancer, please know that the Canadian Cancer Society has one goal in mind...your survival.

Thank you Chapleau for your roll in finding a cure for cancer.

Available locally

PRINTING

- Envelopes
- Statements NCR
- Invoices NCR
- Receipts NCR
- Business Cards
- Draw Tickets
- Restaurant Place Mats
- Mail Inserts



864-1870
jnsigns@gmail.com

Make sure your advertising ends up on your customers' kitchen table and not in the garbage containers.....

**ADVERTISE IN THE
CHAPLEAU EXPRESS**

CHARITY BBQ

Please join us on Friday June 26, 2009 for a barbecue in the Valu-Mart parking lot from 11am-2pm. All proceeds from the barbecue will support the Chapleau General Hospital Foundation's medical and hospital equipment campaign, Together we will grow!



BQ pour la charité

Venez nous joindre pour un BBQ, le vendredi 26 juin, 2009 dans le stationnement du Valu Mart. Tous les profits du BBQ appuieront la campagne pour l'achat d'équipements médicaux de la Fondation de l'Hôpital générale de Chapleau. Ensemble nous grandissons!



Algonia District School Board

CONGRATULATIONS

*All 2009 Graduates!
It's been a memorable year!*



Emma Hamill wins Youth Business Plan Challenge



Chapleau P.S Terrific Students certificates



C.H.S. wins volleyball tournament



C.H.S cafeteria wins Eat Smart Award

YOU DID IT!

Whether you're a JK, SK, Grade 8 student or high school graduate, enjoy this important milestone and please celebrate safely.

Thank you to our teachers, administrative and support staff for their dedication to providing quality education in a safe and caring environment.

Thank you to parents and school councils, volunteers & community members for their support and contributions to a successful school year.

Mario Turco, Director of Education

Reaching to the Future
www.adsb.on.ca

ENJOY THE MEMORIES
They Will Last a Lifetime.

Wanda McQueen, Chairperson

Who Are the Metis?

Cont'd from P.3

quickly being extirpated from the United States as well.

Faced with starvation and the increasing immigration of non-aboriginals onto their lands, the Metis along with several other First Nation groups primarily the Cree revolted in what is now called The North West Rebellion. After success in several early battles the Metis and their Cree allies were defeated by an overwhelming force of Canadian militia on May 9 1885 at Batoche Saskatchewan. Many Metis leaders and Cree Chiefs were either jailed or hanged as traitors, most notably Metis leader Louis Riel and Cree Chief Wandering Spirit. The defeat at Batoche ended aboriginal resistance on the prairies and forced most First Nations peoples onto reserves. The Metis who at the time were not recognized as a distinct aboriginal people by

the Canadian Government were left with nothing. Many fled to the forested areas of the Prairie Provinces and even into the Northwest Territory of Canada to escape European settlement where they continued to hunt, trap and fish for a living. Those who remained on the prairie became known as the road allowance people, displaced and with no land of their own they lived in shanty towns, squatting on land set aside for roads.

In 1982 almost 100 years after the fall of Batoche the Metis finally received recognition in the Canadian Constitution as one of the aboriginal peoples of Canada.

Since 1983, the Metis National Council has represented the Métis Nation nationally and internationally. It receives its mandate and direction from the democratically elected leadership of the Métis Nation's governments from Ontario, Manitoba, Saskat-

chewan, Alberta and British Columbia. Specifically, the MNC reflects and moves forward on the desires and aspirations of these Métis

governments at a national and international level.

Chapleau is a historic Metis community with approximately 106 Metis citizens registered with the Metis Nation of Ontario. The

definition of Metis is a person who self-identifies as Métis, is of historic Métis Nation Ancestry, is distinct from other Aboriginal Peoples and is accepted by the Métis Nation. For more information on

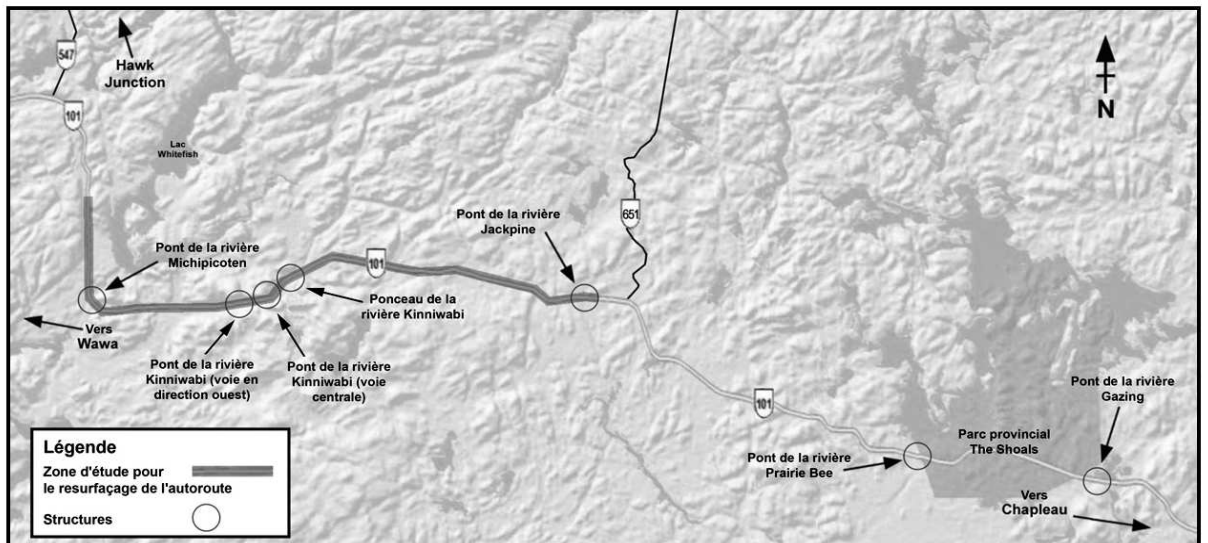
citizenship in the Metis Nation of Ontario visit their website at www.metisnation.org/ or contact the Chapleau Metis Council interim President David Hamilton at 705-864-0224.



AVIS DE COMMENCEMENT D'ÉTUDE Resurfacement et réfection de ponts pour l'autoroute 101

L'ÉTUDE

Morrison Hershfield a été choisie par le ministère des Transports de l'Ontario (MTO) pour effectuer l'étude concernant l'avant-projet détaillé et l'évaluation environnementale de portée générale pour le projet de resurfacement et de réfection de ponts pour l'autoroute 101 entre Chapleau et Wawa. Ce projet implique la réfection de sept (7) structures et le resurfacement d'environ 27,5 km de chaussée sur l'autoroute 101.



Les principaux travaux au sein de la zone du projet comprendront :

- le resurfacement de l'autoroute 101 de 14,8 km à l'est de l'autoroute 547 en direction est jusqu'à 2,2 km à l'ouest de l'autoroute 651, soit une distance d'environ 27,5 km;
- le remplacement de ponceaux;
- l'aménagement de fossés pour le drainage;
- la réparation des soulèvements dus au gel et des zones de détresse;
- le remplacement des garde-corps;
- le retrait et la reconstruction des accès aux propriétés, incluant la voie de virage à droite à l'entrée du Parc provincial Potholes.

La réfection des structures suivantes, situées sur l'autoroute 101 entre les autoroutes 129 et 17 comme indiqué sur la carte ci-dessus, fera aussi partie du projet :

1. pont de la rivière Jackpine;
2. ponceau de la rivière Kinniwabi;
3. pont de la rivière Kinniwabi (voie centrale);
4. pont de la rivière Bridge (voie ouest);
5. pont de la rivière Michipicoten;
6. pont de la rivière Gazing;
7. pont de la rivière Prairie Bee.

LE PROCESSUS

Ce projet a été classé dans le Groupe « B » et sera mené conformément au document portant sur l'évaluation environnementale de portée générale pour les installations provinciales de transport (2000). Cette étude comprendra l'évaluation de l'impact potentiel des travaux proposés sur l'environnement de la zone d'étude. Une fois l'étude complétée, un rapport d'étude environnementale pour le transport (REET) sera préparé et disponible pour consultation publique durant une période de 30 jours. L'avis annonçant la soumission du REET sera publié dans le journal local.

La collecte des commentaires et de l'information concernant cette étude a pour but d'aider le MTO à respecter les prescriptions de la Loi sur les évaluations environnementales. Ces commentaires seront conservés au dossier et utilisés durant l'étude conformément à la Loi sur l'accès à l'information et la protection de la vie privée. Exception faite des renseignements personnels, tous les commentaires feront partie du dossier public.

COMMENTAIRES

Nous souhaitons connaître tout commentaire ou toute inquiétude que vous pourriez avoir concernant cette étude. Veuillez communiquer avec l'un des membres de l'équipe de projet suivants :

M. Edward Li
Consultant et chargé de projet
Morrison Hershfield Limited
235, boulevard Yorkland
Toronto (Ontario) M2J 1T1
Tél. : (416) 495-4228
Télé. : (416) 499-9658
Courriel :
eli@morrisonhershfield.com

M^{me} Jennifer Bruin
Urbaniste en environnement
Morrison Hershfield Limited
235, boulevard Yorkland
Toronto (Ontario) M2J 1T1
Tél. : (416) 495-4306
Télé. : (416) 499-9658
Courriel :
jbruin@morrisonhershfield.com

M. Doug Rivers, ing.
Chargé de projet du MTO
Ministère des Transports de l'Ontario
447, avenue McKeown
Bureau 301
North Bay (Ontario) P1B 9S9
Tél. : (705) 497-5262
Sans frais : 1 800 461-9547
Télé. : (705) 497-6926
Courriel :
doug.rivers@ontario.ca

**MONA'S
GREENHOUSE**
will be closed
for the season
Saturday,
June 27th, 2009
at 4:00 p.m.

**"WE WILL BE HAVING A
TWO FOR ONE SALE ON
ALL BEDDING PLANTS
ON JUNE 25TH, 26TH
AND 27TH.**

(PERENNIALS & HANGING BASKETS
ARE NOT INCLUDED IN SALE)

THANK YOU
EVERYONE FOR YOUR
PATRONAGE
MONA

Abby Day... What a HUGE Success!!!



Con't from P.1 Michel Sylvestre, Lucette Mainville, Réjean Mainville, Joël Lorraine Fortin, Réal Lavallée, Tracy Fortin, Lyne Fortin, Martel, Phil Martel, Paul Taylor, Rita Nancy Sylvestre, Servent, Nathalie

Barsalou, Richard Courtois, Michelle Courtois, Shannon Fuller, Anne-Marie Gionet, Mireille Simard, Kathie Cummings, Rosanne Turcotte, Marlyne Fortin, Shyanne Lafrenière, Sylvie Lafrance, Marianne Leach, Ashley Leach, Krista Leach, Ceiligh O'Hearn, Pauline Cloutier, Lyne Pilote, Sylvianne Pilote, Caroline Pilote, Jesse Gherbaz, Robyn Brunette, Cameron Plourde, Katie Tremblay, Melissa Pronovost, Natalie Lavalée, Melissa Lafrance, Julie Robitaille Sabrina Korpela, Katrina Tangie, Chantale Bergeon, Johnny Houle, Claudia Desbiens, Jennifer Guertin, Zoë Weber,



Renée Weber, Jeanie Weber, Kayla Howson, Jessica Raposo, Shawn Hann, Alicia Canning, Krista Wideman, Allison Hayes, Tori Bedard, Melody Levesque, France Houle, Suzie Prévost, Céline Tessier, Désirée Eisner, Rachel Pressé,

Aline Fortin, Amy McAdam, Sarah McColeman, Brittaney Pilon, Emily Pilon, Garren Marsh, Richard Lepage, and last but not least, my husband Patrick Venne, who helped me out tremendously... and for putting up with me for a month and a

half of planning this event.

Numerous people gave items and money but wish to remain anonymous. I thank you from the bottom of my heart. I am extremely grateful to everyone who gave their money and their time.

Registration

for soccer this Sunday
at Trillium 1 to 4 pm
for age group of
10-13 yrs.

Games to be played
on Monday and Wednesday nights

Fee of \$50.00



SUPERIOR EAST/SUPÉRIEUR EST
Community Futures Development Corporation
Société d'aide au développement des collectivités

Attention: Small Business Owners and Potential Business Owners

The staff of the Superior East Community Futures Development Corporation will be in Chapleau on June 25th, 2009. Please call 1-800-387-5776, x21 to arrange for an appointment to discuss your **small business counselling or loan needs.**

Attention: Propriétaires de petites entreprises et propriétaires potentiels d'entreprises

Le personnel de la Société d'aide au développement des collectivités Supérieur Est sera à Chapleau le 25 juin, 2009. Appelez au 1-800-387-5776, x21 pour fixer un rendez-vous afin de discuter vos **besoins de prêts ou de conseils pour petites entreprises.**

Ontario's adoption records are now open.

visit www.ontario.ca/adoptioninfo

Effective June 1, 2009, Ontario's adoption records are open. This means that adopted adults and birth parents can apply for post-adoption birth information from birth records and adoption orders.

An adopted adult, 18 years of age or older, can now apply for a copy of his or her original birth registration and adoption order. A birth parent can receive information from the birth registration and adoption order of the child that was placed for adoption once that child turns 19 years old.

If you want your identifying information kept private, and if the adoption order was made before September 1, 2008, adopted adults and birth parents can file a disclosure veto.

To learn more about your right to information and privacy regarding adoption, visit www.ontario.ca/adoptioninfo or call 1-800-461-2156 (TTY 416-325-3408).

Paid for by the Government of Ontario.



Can I afford to stay retired?

With tight economic times and dwindling bank balances, retirement may not seem as idyllic these days. How can you adapt to this new financial environment and still make the most

of your retirement? Chartered Accountant Giovanni (John) Roma, Partner, Miles & Roma Professional Corporation in Windsor advises retirees to revisit their financial

plans, especially if their income has changed significantly.

"Make sure your plan still works for you. The current downturn has thrown a kibosh into the finances of many retirees, so be

proactive and go back to the drawing board. Yesterday's financial plan is no longer the plan for today, and it probably won't be the plan for tomorrow."

Roma offers these ideas to help keep you on track financially:

- Adopt the simple formula followed by previous generations – money in, money out. When you have the money in your pocket, spend only what you can afford to spend, and avoid the use of credit.
- Regroup and re-budget. Identify any discretionary expenses, and prioritize your needs and wants.
- Run a reality check on both your lifestyle and your expectations of that lifestyle. What can you afford to do? Are your expectations realistic?
- Based on your revised budget and your lifestyle expectations, make one of two choices: either downsize to fit your income by cutting back on your discretionary expenses, or supplement your income.

If you decide to downsize, consider selling the family home and/or relocating to another city or town that has a cheaper cost of living.

If you decide to supplement your income by returning to work, be positive about this new adventure. Prepare a resume, focusing on your strengths and career accomplishments. Employers often prefer to hire retirees given their proven track records, commitment and desire to work. Plus, a small incentive exists for employers: they are exempted from paying the employer portion of Canada Pension Plan

(CPP) payments for employees who are already collecting CPP.

Consult your financial planner or investment professional, and ask questions about financial strategies. Is it time to reinvest? Should you reinvest more conservatively? Are there tax consequences if you decide to sell investments now? Use your experience in the current economic downturn as a lesson and wake-up call for your adult children. Do they have savings plans in place for the future?

Brought to you by the Institute of Chartered Accountants of Ontario.

THANK YOU

The Canadian Cancer Society Chapleau Branch would like to thank everyone who contributed time, energy, money and materials into making Relay 2009 a memorable and successful event. Without you, there would be no Relay.

Chapleau Relay Steering committee; I would like to personally thank my committee for all of their diligence and perseverance, for walking with me when they weren't sure where we were going, for all the little things they did that they thought were insignificant but to me meant the world, and for keeping the focus on the community. Please know how important your contributions to our committee really are. I treasure each and every one of you for the time, spirit and talent that you brought to the table and hope you will join me again next year. Gisele.

Joanne Laughland / Survivor Chair, Lise Bernier / Treasurer, Heather Pilon/Treasurer, Shirley Goheen / Luminary Chair, Rosane Connelly / Health & Safety, Denis Rochon / Communications, Ethel Orton/Food and Beverage, Pat Purich / member @ large, Trish Hamill / Children's activities, Natasha Orton/ Team & Volunteers, Vicki St Amand/Branch Secretary, Jay Cranney/Sponsorship

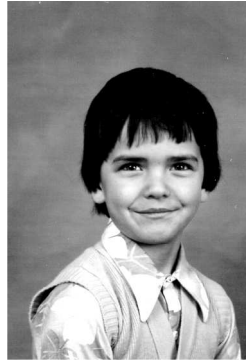
Each and every volunteer, too numerous to name but invaluable just the same. Your time, skills and dedication were the driving force behind the success of the Relay. I hope next year we can spend more time with you. Please know how much you are appreciated and just how important you are to our community. The following contributors: Ace Contracting, Arctic Watershed, Aux Trois Moulins, Becky Hodgson & Gr. 10 Art Class, Between Friends, Entre Amis, Canadian Pacific Railway, Chapleau Express, Chapleau Real Estate, Chapleau Day Care Centre, Collins Home Hardware, Day & Lacroix Construction, Doug Prusky (Golf Cart), Dr. Taylor, École Secondaire Catholique Trillium, Ethel Orton, Gus's II, Hongrs, Kathleen Johnston, Lunch Box, Ludie's Baskets, Ministry of Natural Resources, McDougall Fuels, Model Drug Store, Nesor Investments, Oddfellows/Rebekahs, OPP, Paramedics, Pat Purich, Ray Gouge & Raiders Café, RBC, Rick Dell, Rotary Club of Chapleau, Shannon Fuller, TNT, Township of Chapleau, UAP NAPA, Vikki Burkholder, William Ivy.

SONDAGE

On vous encourage fortement de remplir le sondage inséré dans le journal. Ceci est un projet de recherche pour le Centre Culturel Louis-Hémon. Ce dernier aidera énormément au Centre Culturel Louis-Hémon dans sa planification stratégique. Veuillez amener le sondage, dûment rempli, au 69, rue Birch.

Merci pour votre participation!!

**BONNE FÊTE
MICHEL
SYLVESTRE
40 ANS!**



de ta
Famille

Domtar
NOTICE OF

TEMPORARY ROAD CLOSURE

The Betty Lake Road (also known as the Kormac Road) will be temporarily closed from July 7 to July 31, 2009. This road closure is required for the replacement of the Kinogama River Bridge.

For more information on this road closure please contact Mike Forrest, Domtar Inc., at (705) 267-3339, ext 504

17th Annual Seniors' BBQ



Date: Wednesday, June 24th, 2009
Time: 11:30am
Place: Bignucolo Residence Courtyard
Cost: \$5.00 for adults,
\$3.00 for Seniors (65+) and
Children (10 and under).



Tickets available at the Supported Independent Living Program - Cedar Grove, Turning Point, Hospital Front Desk, Home Furniture and the Activation Department at Bignucolo Residence (864-3062).
Deadline to purchase tickets is Monday, June 22nd, 2009.

16ième BBQ Annuel des personnes âgées



Date: mercredi le 24 juin, 2009
Heure: 11h30
Endroit: Cour de la Résidence Bignucolo)
Coût: 5,00\$ pour adultes,
3,00\$ pour personnes âgées (65+) et
enfants (10 ans et moins).



Vous pouvez se procurer des billets au programme de Soutien à la vie autonome - Cedar Grove, Point Décisif, Home Furniture ou au Département d'Animation de la Résidence Bignucolo (864-3062).
La dernière journée pour acheter des billets est le lundi 22 juin, 2009.

Pimii Kamik Gas Bar & Gift Shop

Located on the Chapleau Cree First Nation

SUMMER HOURS

will be from 7 a.m. - 10 p.m., 7 days a week

**Drop by and check out our line of
Authentic Native Crafts,
Unique Gift Ideas, Jewellery,
and Gift Certificates TOO!**

We also carry road trip snacks, which includes Subs,
Chips, Pop, plus a whole lot more.
Your Propane Refilling Station



Local taxidermist continues to excel Kebsquasheshing Golf Club News



Local entrepreneur and taxidermist, Katie Hatton, recently participated in an annual taxidermy competition, in Orillia, ON.

She placed third in the novice division with a walleye, black bear shoulder mount and

whitetail shoulder mount. As well as second place in the novice division with a full mount lynx, and sponsorship award for the highest scoring whitetail using a "Coombs" form in the novice division.

The competition is held by the

Canadian Taxidermy Association, of which Katie was elected to sit on the board of directors. The weekend not only consists of tough competition, but also seminars held by world class taxidermists and judges, in different areas of

taxidermy.

Katie's business has been steadily growing over the past couple of years, and with attending competitions of this sort, she is able to learn from some of the best taxidermists in Canada and U.S. in order to continually improve the quality of her work. Constructive criticism from world class judges is one of the best ways to improve in a trade like this one.

With the fishing and upcoming hunting seasons upon us, anybody looking to have that "trophy" fish or mammal preserved, Katie is always looking forward to new challenges.



Rosie Cloutier celebrating her hole in one on #1 Hole



Kevin Monahan celebrating his hole in one on #5 Hole

Early in the season and we already have two holes in one. On May 18, Kevin Monahan had a 235 yard hole in one on the fifth hole. On June 5th, Rosie Cloutier had a 155 yard hole in one on the first hole.

On June 14th, the first 4 person scramble was held. Following is the list of winners:

1st Flight: Gaston Demers, Susie Demers (59), Melanie Demers, Buddy Collings.

2nd Flight: Al Barsalou, Glenn Harvey (61), Len Gauthier, Rolf Fuchs.

3rd Flight: Nelson Bernier, Lillian Bernier (64), Gary Chambers, Wesley Chambers.

4th Flight: Yvon Noel, Pierrette Noel (68), Lionel Gionet, Anne Marie Gionet. Luck of the draw: George Larocque, Odette St-Pierre, Marcel Morin, Ron Daviau.

\$20.00 draws: Raymond Brunette, Robert Noel, Al Berry, and Adam Domich.

Ouverture des dossiers d'adoption de l'Ontario

Visitez www.ontario.ca/adoptioninfo

À compter du 1er juin 2009, les dossiers d'adoption de l'Ontario seront ouverts, ce qui signifie que les personnes adoptées adultes et les pères et mères de sang des personnes adoptées pourront obtenir des renseignements identificatoires tirés des enregistrements de naissance et des ordonnances d'adoption.

Une personne adoptée de 18 ans ou plus pourra désormais demander une copie de son enregistrement de naissance et de son ordonnance d'adoption originaux. Un père ou une mère de sang pourra obtenir des renseignements tirés de l'enregistrement de naissance et de l'ordonnance d'adoption de l'enfant adopté une fois que celui-ci aura atteint l'âge de 19 ans.

Les personnes adoptées adultes et les pères et mères de sang qui souhaitent que les renseignements identificatoires demeurent confidentiels peuvent enregistrer un veto sur la divulgation si l'ordonnance d'adoption a été rendue avant le 1er septembre 2008.

Pour en savoir plus sur vos droits à l'information et à la protection de la vie privée, visitez le site www.ontario.ca/adoptioninfo ou téléphonez au 1 800 461-2156 (ATS 416 325-3408).

Payé par le gouvernement de l'Ontario.



Brown announces Franco-Ontarian licence plate launch

Ontario Government Helps Celebrate Franco-Ontarian Heritage

Mike Brown, MPP, Algoma-Manitoulin,

is pleased to announce that Ontario residents may now proudly display the official Franco-Ontarian emblem on their French-language licence plates.

"All Ontarians can now show their pride in our province's Francophone heritage by displaying the Franco-Ontarian emblem on an all-French licence plate. This is just one of the many steps our government is taking to recognize the importance of Ontario's Francophone community," said Brown.

The new graphic licence plate is available at Driver and Vehicle Licence Issuing Offices and Service Ontario locations across the province. A standard fee of \$77.75 will apply for those who wish to purchase the new custom plate.

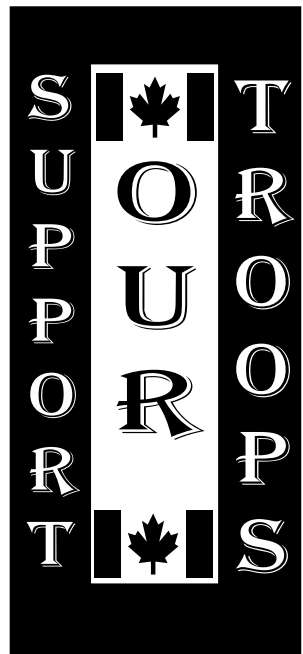
Licence plates with the Franco-Ontarian flag have been around since

June 2003, but only with the English slogan, 'Yours to discover'. In May 2008, the French slogan 'Tant à découvrir' was

introduced on standard plates. Today's announcement makes it possible to combine both the illustration of the flag and the French slogan.

More than 580,000 Francophones live in Ontario – the largest French-speaking community in Canada outside Quebec.

Requirements for a motor vehicle to display a licence plate started in 1903, under the Highway Traffic Act.

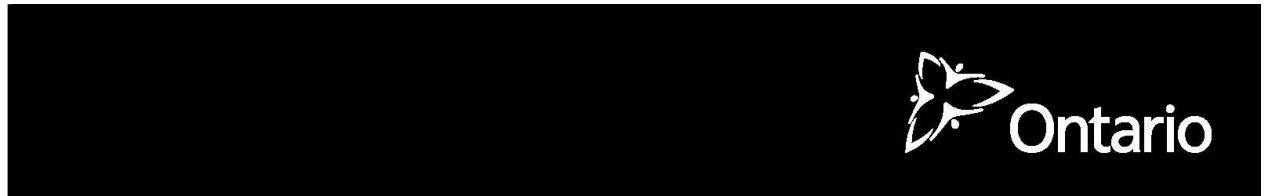


Come to Kathy's Kitchen at the Golden Route Lodge on Father's Day June 21st for homemade cabbage rolls and fresh strawberry shortcake! 5 pm - 9 pm 705-864-1670

Hospital Auxiliary: Moments from the past



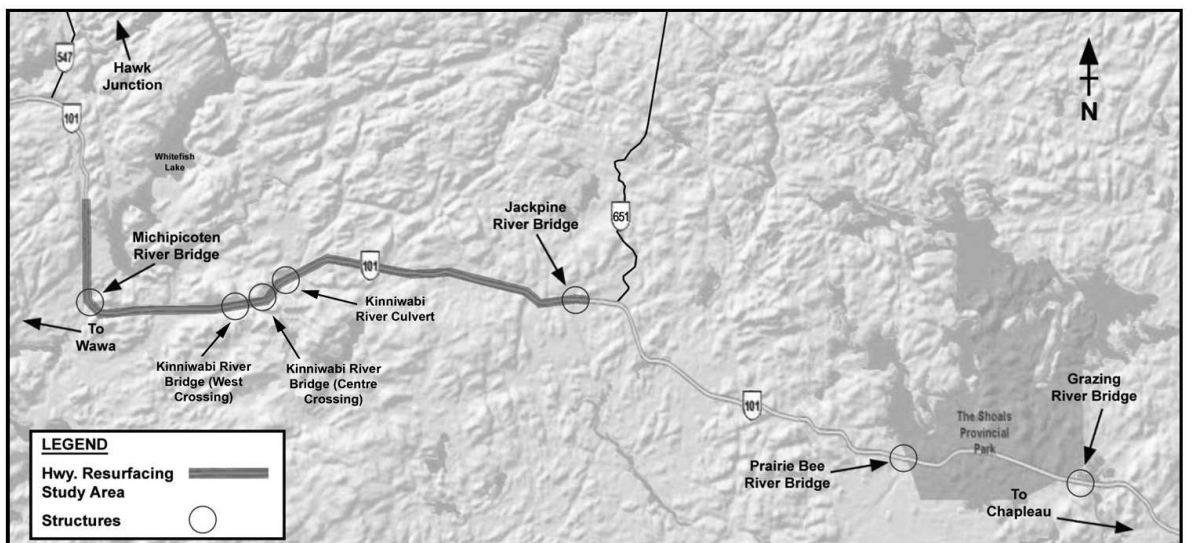
COMMISSIONED PAINTING — Mrs. Bonnie Ivey displays the watercolour painting she was commissioned to paint by Chapleau General Hospital. The painting of the old Lady Minto Hospital will be hung in the Chapleau General Hospital foyer. Accepting the painting for the Hospital are Donna Leigh, President of the General Hospital Ladies' Auxiliary and Wayne Guest, Chairman of the Chapleau General Hospital Board of Directors.



NOTICE OF STUDY COMMENCEMENT Highway 101 Resurfacing and Bridge Rehabilitation

THE STUDY

Morrison Hershfield Limited has been retained by the Ministry of Transportation (MTO) to conduct a Detailed Design and Class Environmental Assessment Study for the Highway 101 resurfacing and bridge rehabilitation project between Chapleau and Wawa. This project involves the rehabilitation of seven (7) structures and the resurfacing of approximately 27.5 km of Highway 101.



The major work items within the project limits will include:

- resurfacing of Highway 101 from 14.8 km east of Highway 547 easterly to 2.2 km west of Highway 651, a distance of approximately 27.5 km;
- culvert replacements;
- drainage ditching;
- the correction of frost heaves and distressed areas;
- the replacement of guiderails; and,
- the removal and reconstruction of property entrances including the right turn taper at the entrance to Potholes Provincial Park.

Also included is the rehabilitation of the following structures on Highway 101, between Highway 129 and Highway 17 as shown on the map above:

1. Jackpine River Bridge;
2. Kinniwabi River Culvert;
3. Kinniwabi River Bridge (Centre Crossing);
4. Kinniwabi River Bridge (West Crossing);
5. Michipicoten River Bridge;
6. Grazing River Bridge; and
7. Prairie Bee River Bridge.

THE PROCESS

This project has been classified as a Group 'B' undertaking under the *Class Environmental Assessment for Provincial Transportation Facilities* (2000). The study will include an assessment of the potential impacts of the proposed work on the study area environment. Upon completion of this study, a Transportation Environmental Study Report (TESR) will be prepared and made available for a 30-day public review period. Notification of submission of the TESR will be published in the local newspaper.

Comments and information regarding this study are being collected to assist in meeting the requirements of the *Environmental Assessment Act*. These comments will be maintained on file for use during the study in accordance with the *Freedom of Information and Protection of Privacy Act*. All comments become part of the public record with the exception of personal information.

COMMENTS

We are interested in hearing any comments or concerns that you may have with the study. Please contact one of the following project team members:

Mr. Edward Li
Consultant Project Manager
Morrison Hershfield Limited
235 Yorkland Boulevard
Toronto, Ontario M2J 1T1
Tel.: 416-495-4228
Fax: 416-499-9658
E-mail: Eli@morrisonhershfield.com

Ms. Jennifer Bruin
Environmental Planner
Morrison Hershfield Limited
235 Yorkland Boulevard
Toronto, Ontario M2J 1T1
Tel.: 416-495-4306
Fax: 416-499-9658
E-mail: Jbruin@morrisonhershfield.com

Mr. Doug Rivers, P. Eng.
MTO Project Manager
Ministry of Transportation
301 - 447 McKeown Avenue
North Bay, Ontario P1B 9S9
Tel.: 705-497-5262
Toll-free: 1-800-461-9547
Fax: 705-497-6926
E-mail: Doug.Rivers@ontario.ca

THE LOCAL MARKET PLACE

CHADWIC HOME, FAMILY RESOURCE CENTRE

Offers shelter, emotional support, and information for women and their children who are in crisis situations. We have a Toll Free Crisis Line which is staffed 24 hours a day. We can arrange for free transportation to the Centre for women who live in the Algoma/Chapleau area. We also offer support to women who live in the communities of Chapleau, White River, Dubreuilville, and Hornepayne through our Outreach Program. Our Outreach Worker travels to those communities to meet with women who need emotional support as well as information about their rights and options. If you need to speak with the Outreach Worker when she is in your community, you can call the Centre at any time to set up an appointment. You do not need to be a resident of the Centre in order to use our services. If you need someone to talk to or if you just need someone to listen, call our Toll Free Crisis line at 1-800-461-2242 or you can drop in at the Centre. We are here for you.

ALCOHOLICS ANONYMOUS
Offers help to anyone who desires to stop drinking. Open discussion meeting on Sundays at 2:00 p.m. Trinity United Church basement. Telephone contacts: 864-2786

ALCOOLQUES ANONYMES
Offre de l'aide à celui ou celle qui désire arrêter de boire. Les rencontres ont lieu tous les mercredis soirs à 19h (7:00 p.m.) Au sous-sol de l'église Sacré-Coeur. Téléphonez au 864-2786

Narcotics Anonymous offers help to anyone who desires to stop using drugs. Meeting every Thursday 7:30 p.m. basement Sacred Heart Church. Telephone contact 864-2786.

Société Alzheimer Society meetings will be held at the Chapleau Hospital every 1st Monday of each month starting from 7:00 p.m. to 9:00 p.m.

APARTMENTS FOR RENT

1-2 and 3 bedroom apts. and bachelor. For more information call 864-1148 or 864-4071 (cell) Aug 29

You need a decent apartment with 1, 2 or 3 bedrooms, fully or semi-furnished, or not, dryer and washer hookups, outdoor balcony, storage shed, private parking. Central location. Call Quality Rental at 864-9075 and leave message. Aug 8

1 Bedroom Apartment, close to downtown. Fridge & Stove included, laundry facilities, secured storage, parking & outdoor plug-in included. Contact Bertrand Apartments (705) 864-0230 Jun 27

Cabin for rent in Esher. Hydro included & fridge and stove. Call 864-2471 or 705-362-6624 Jun 27

2 Bedroom basement apartment available immediately, with fridge & stove and washer & dryer. No pets/non smoking. Call 864-0484 Jun 27

1 & 2 Bedroom apartment for rent July 1st. For more information call 864-9073. If no answer call after 6 p.m. Jun 27

FOR SALE

GUITARISTS!!!!!! Digitech RP350 multi effects processing pedal for electric guitar with power supply and USB chord and manual included. ZOOM G2 multi effects processing pedal for electric guitar with power supply and manual included. 10watt KUSTOM practice amplifier. Has a good overdrive and clean sound. Like new. Will sell separately and all offers will be considered. Call 864-2395 anytime to inquire.

FOR SALE (cont)

95 Corsica for parts, runs good, not road worthy. \$300.00. Call 864-1863 after 5:00 p.m. Jun 27

HOUSES FOR SALE

PRICE REDUCED. Home for sale on Devon Siding road 3 bdrm, 2 baths, large eat-in kitchen, dining room, large living room, sunroom, partially finished basement, new roof 2008, 24'x44' heated 2 story garage with workshop and full loft, wood fired boiler, second garage/woodshed approx. 24'x24', greenhouse, mature gardens and more. Can be seen on saultstemarie.kijiji.ca. NOW ASKING **\$219,000.00**. Will consider all reasonable offers. Call 864-9007 for an appointment to view. Jun 27



HOLY SPIRIT you who make me see everything and who shows me the way to reach my ideal. You who gives me the divine gift to forgive and forget all that is done for me. You who are in all the instances of thy life with me. I in this short dialogue, want to thank You for everything and confirm once more, that I never want to be separated from You. No matter how great the material desires may be, I want to be with You and all my beloved ones in your perpetual glory. Amen Thank you for your love towards me and my loved ones.

LOTS FOR SALE

Serviced Lot for Sale
30 Adele St.
55' x 135'
\$22,000
Call 705-363-0414 (Timmins) Jun 20

WOOD STOVES

For Sale, New Blaze King Wood Stoves, shipped direct to Chapleau. For the best prices on Blaze King wood stoves call Rick Geroux: 705-779-3304. ctd

THANK YOU

Thank you. The winner of the "pamper yourself basket" is Kristen Bartok. To everyone who donated during the downtown day and evening of the relay, thank you for all your caring and support! A total of \$355.00 was donated to Chapleau's Relay for life towards Cancer research. Special thanks to Adyh & Sheila! Ludie's Baskets & Crafts.

Classified ads WORK

Novena - O Holy Saint Jude, Apostle and Martyr, great in Virtue and rich in miracles, Near kinsmen of Jesus Christ, The faithful intercessor of all who Invoke thy special patronage in Time of need, to You I have recourse from the depth of my heart and humbly beg you, to whom God has given such great assistance. Help me in my present and urgent petition. In return I propose to make your Name known and cause your name to be Invoked. Three Our Fathers, Three Hail Marys, Three Glorias. St. Jude pray for us and All who invoke your aid.

SLOMA CLEANERS
Drop off at **Between Friends (Cedar Grove)**
Mon. Fri. 8.30 to 4.30

BERRY'S FREIGHT SERVICES
TIMMINS - CHAPLEAU - TIMMINS
MONDAY TO FRIDAY
1lb. to 10,000 lbs.
FOR QUALITY SERVICES AT INEXPENSIVE PRICES GIVE US A CALL AT **1-705-264-4334**

ALL ADS ARE ACCEPTED AT THE CHAPLEAU INNOVATION CENTRE DEADLINE FOR RECEIVING ADS IS WEDNESDAY 4:00 p.m.
CLASSIFIED ADVERTISING RATES
Regular Classified Ads First 25 words or less \$6.25 Each additional word \$0.16+GST
No refunds on cancelled classified ads.

I.D. Photos
FAC - PAL
864-1870

MISSION MOTORS of WAWA
NEW & PRE OWNED VEHICLE SALES
GM Goodwrench SERVICE CENTER
MISSION MOTORS 24hr TOWING
PONTIAC, GM Canada, GMC, CHEVROLET

ALLEMANO & FITZGERALD
Barristers and Solicitors
MICHAEL G. ALLEMANO, B.A., L.L.B.
Certified by the Law Society as a Specialist in Real Estate Law
P.O. Box 10, 369 Queen St. E. Suite 103, Sault Ste. Marie, Ontario P6A 1Z4
Phone (705) 942-0142 Fax (705) 942-7188
P.O. Box 1700, 55 Broadway Avenue, Wawa, Ontario P0S 1K0
Phone (705) 856-4970 Fax (705) 856-2713

Northern Lights Ford Sales
Andrew G. McKenzie
11 Years of Service
Highway 17, North P.O. Box 1033 Wawa ON. P0S 1K0
Bus: 705.856.2775 Fax: 705.856.4862 sales@northernlightsford.ca

BODYLINES BY CRACK LTD.
-5 Licensed Bodymen
-Insurance Claims
-Windshield Repairs and Replacement
-State of the Art Frame Machine
ALL WORK GUARANTEED
PLEASE CALL 705-856-1406

LVP LABERGE VENNE & PARTNERS
PROFESSIONAL CORPORATION
CHARTERED ACCOUNTANTS and CONSULTANTS
COMPTABLES AGRÉÉS et CONSULTANTS
Professional Services to Northern Ontario for 25 years
Financial Statements for Small Business & Corporations
Tax Returns - Personal, Corporate and Trust/Estate
Personal, Retirement, Estate Financial and Tax Planning Strategies
Business Projections, Plans and Financial Proposals
Computer Consulting
ACCPAC and Quickbooks
1970 Paris Street, Sudbury, Ontario P3E 3C8
(705) 523.0272 (800) 581.7510 www.lvpartners.ca

LVP LABERGE VENNE & PARTNERS
PROFESSIONAL CORPORATION
CHARTERED ACCOUNTANTS and CONSULTANTS
COMPTABLES AGRÉÉS et CONSULTANTS
25 ans de service professionnels pour les entreprises du Nord de l'Ontario
États financiers pour petites et moyennes entreprises et corporations
Rapports d'impôts personnel, de compagnie et de fiducie
Planification financière et fiscale personnelle et de compagnie
Projections financières, plans d'affaires et propositions de financement
Consultation en informatique
ACCPAC et Quickbooks
1970 rue Paris, Sudbury, Ontario P3E 3C8
(705) 523.0272 (800) 581.7510 www.lvpartners.ca

RETIREMENT SOCIAL FOR MICHEAL LEVESQUE
Saturday, June 20th at 7:00 p.m. at The Legion Hall
Friends - Former Parents - Students DROP IN & SAY HELLO

HOUSE FOR SALE
Well-maintained 3 bedroom brick bungalow with detached garage, kitchen with oak cabinets, dining area, living room, 4 piece bath, newly finished summer kitchen downstairs, large laundry room and cold storage room. Includes stove, built-in oven, dishwasher, washer and dryer. This home has a large 1 bedroom apartment. Let the rent help pay your mortgage or apartment can be easily converted to be part of your living area. Call 864-0404.

NEW AT THE CHAPLEAU PUBLIC LIBRARY LIBRARY NEWS
Come in the Library to register for the Summer Reading Club and Story Hour each Wednesday at 2 p.m. beginning July 15th. This year's Detective Theme and Agent 009 promises to be great fun. Be sure to ask about the new bus service. Chapleau Public Library has funds available to purchase software for our Wii game. Please come in this week to vote on your choice of games.
NEW BOOKS
The Disappeared - Kim Echlin - Born to run - James Guppendo
the Disappearance of Seetha - Andrea Gunraj

Volunteer service award ceremony Brown announces Chapleau volunteers



Mike Brown, M.P.P., Algoma-Manitoulin, is pleased to announce the Volunteer Service Awards honouring six Chapleau recipients.

"I would like to thank the volunteers who generously offer their time and energy to better the communities in Algoma-

Manitoulin. Volunteers are very often unsung heroes, and I am pleased that we are able to honour some of them for their long-time service and dedication," said Brown.

Each year the Ontario government, through the Ministry of Citizenship and Immigration, recognizes the in-

valuable contribution made by volunteers in Ontario communities by honouring them at Volunteer Service Award ceremonies. An essential component to building healthy and diverse communities is the tireless, personal commitment of those dedicated to improving the lives of others.

Recipients from Chapleau Minor Hockey Association are Eric Bazinet, Ken Crockford, Tina Crockford, Carla Guthrie, Jeff Hamill and Ray Orton.

"In addition, I would like to thank all volunteers who make our communities a better place to live," added Brown.



Services de santé de
Chapleau Health Services

We are currently seeking qualified candidates for the following position:

Part-Time SIP-CAFÉ Project Assistant Position Ends March 31, 2010

Please note this is a mental health consumer/survivor initiative. To qualify for this position the candidate has had or has to have a diagnosis of a serious mental illness or is a present/past mental health and/or addiction consumer/survivor.

POSITION SUMMARY:

The successful applicant will be a member of the Turning Point Décisif Program (Mental Health, Addictions and Community Support Services). The purpose of the position is to assist the Project Coordinator in a one-year project (SIP-CAFÉ – Social Integration Program and Community Action for Equity which is a mental health and addiction consumer/survivor initiative). The project will consist of the expansion of the actual work force of the Between Friends Coffee/Thrift Shop to include mental health and addiction consumers/survivors.

QUALIFICATIONS:

- Successful completion of a grade 12
- Demonstrated willingness to re-entering the work force
- Prior experience working in a coffee shop or a store an asset
- Basic knowledge of the 3Rs of recycling
- Bilingualism an asset

HOURS:

10.5 hours per week to March 31, 2010.

Interested applicants may submit resumes by June 29th, 2009 to
Human Resources

Services de santé de Chapleau Health Services
6 Broomhead Road, P.O. Box 757
Chapleau, Ontario
P0M 1K0

Tel: (705) 864-3056 - Fax: (705) 864-0449

Email: chapleauhr@sschs.ca

We thank all applicants for their interest, but only those selected for an interview will be contacted.

All applications received will be held strictly confidential.

Cet avis est disponible en français.

www.sschs.ca

NOTICE OF HERBICIDE APPLICATION

Notice is hereby given that Hydro One Networks Inc. – Forestry Services will be commencing Forestry Herbicide Application for brush control in your vicinity. The work will include the selective treatment of undesirable vegetation that would, if left alone, grow into the conductors. Every effort will be made to leave compatible low growing vegetation, which will assist in reducing future maintenance requirements.

Location of work: T61S Circuit - Timmins TS to Weston Lake DS.

Townships of Tisdale, Mountjoy, Ogden, Bristol, Carscallen, Denton, Keefer, Hillary & Sewell

Date of application: July 1 - July 31, 2009

Pesticide trade name: Tordon 101 and Sylgard 309

PCP Act registration number: 9007, 34737

**Name of pest: Undesirable Vegetation
(Brush and sucker growth from stumps)**

If you have any questions or concerns, please contact Hydro One Forestry at 1-866-898-5310

ALL PROPERTY OWNERS AFFECTED WILL BE CONTACTED

hydro
one

Celebrate
the
Arrival of Summer

**THREE
DAYS ONLY**

Wed. 24th, Thurs. 25th, Fri. 26th

**PICK A DISCOUNT
ON**

**ALL Summer Fashions
&**

ALL Summer Sandals

(If item is already on SALE
you get the EXTRA discount)

AND

JOIN US FOR
"Gourmet du Village"
Dips and Lemonade

SOURCE

864-1114

COMPARE - We Won't be Undersold
Chapleau Village Shops
WORKWEAR • FASHIONS • JEWELRY • GIFTWARE

864-1114

Sears

Catalogue &
Appliance Centre 864-1852