

Talk about good coffee!
Miss Muggins
Coffee and
Fresh Donuts



CHAPLEAU EXPRESS

Vol. 17, Issue 38, June 1, 2013

PIZZA HUT & KFC
There's a Reason
We're Number 1
"0 TRANS FAT"
864-0911



Keep the Parks Open!

By Rick Dell

This spring the Ontario Government made the decisions to save a few thousand dollars by closing several parks most of which are in Northern Ontario. There are many reasons for keeping all the parks open in the province. In terms of cost to the Ontario government it is a drop in the bucket to keep these parks open compared to the cost of relocating a power plant for political reasons.

I am writing to offer yet another appeal to examine again the closure of (Sand) Shoals Provincial Park. This is, or was, the closest provincial park to the small town of Chapleau. At the outset it must be admitted it has had a low occupation rate each season and has operated with a small deficit budget each year. Having said this there are several excellent reasons for keeping this park open. First of all, as previously mentioned, this

park is the closest to Chapleau. It is only 50km from our town as opposed to either Wakami Provincial Park (70km) or Ivanhoe Provincial Park (75km). You might find the distance differences to be negligible but each of these parks is different and forty or fifty kilometers adds both time and cost to a day trip. The Ontario Government has already closed a park, Five Mile Lake Provincial Park (40km) that was close to Chapleau. Now it has closed another.

The second point to be made is that each park is unique in what it has to offer the people of Ontario. The Shoals Provincial Park has one of the best family beaches close to Chapleau as well as excellent canoe or kayaking opportunities. The fishing can be

excellent and you can always find a sheltered cove in which to drop your line. These are what I would call the "touristy" attractions of the Shoals. It's most important feature is that it protects an area that is referred to as an esker-delta. These are interesting and unique features created by the last glacial period. Under usual conditions the glacial melt-water washes most esker deltas away but, under certain unusual conditions, a few are left behind for us to study and observe. This esker-delta does have documentation which Ontario Parks should have on file.

My third point to be made is with regards to the notification on the Ontario Parks description that, "This park will not operate during the 2013 season. There will be no staff on-site and

facilities will not be maintained. The park will remain a protected area and visitors can continue to enjoy the park for day-use, free of charge. The park will be gated and access is on foot." Perhaps the person that made this decision does not know that from the park gate at Highway 101 to the beach it is about 1.5km. The road takes you down a steep hill and is paved for about half the distance. This is a long way to push a stroller or carry your lawn chair and cooler not to mention a canoe or kayak. None of us are getting any younger and that hill will take the wind out of you. If this is not enough of an obstacle then there is the matter of parking along a highway at the top of a hill which could be a safety and security issue. In addition if one was to encounter a bear, and there are bears in



Northern Ontario, a 1.5km brisk walk uphill to the safety of your vehicle might be an issue.

In addition to these three points I would like to address the issue of tourism. Every single large or small opportunity to attract tourists to our economically challenged area is important. Now we have one less attraction to offer. There are seven or eight fewer summer jobs to offer our young people. Tourist outfitters in the area have one less lake and boat launch to attract their patrons. All of this is to save the Ontario government a few thousand dollars. Indeed one must wonder if, in the end, more will be lost than gained when all parties are considered.

The fifth and final point I would like to make is that I am tired of Ontario Parks being a group of individually operated units. The parks in

Ontario are a system of parks and should be operated in that manner. I have visited and camped in many Ontario Parks from Kenora to Kingston. In some the water was so polluted you had to swim in a pool, if there was a pool. In others they were so crowded that you have to make a reservation well in advance. I will honestly say that there was not one park that could compete with the quiet, restful solitude of the Shoals Provincial Park even when there were over 30 sites occupied. There must be enough profit generated by the parks located in the larger urban areas to support the parks that have so much to offer but which are in more isolated areas without asking nearby communities to support the deficit.

What I am hoping the Government of Ontario will do is to re-visit this issue.

Cont'd on P.2

100e anniversaire du décès de Louis Hémon

Le 8 juillet 1913, deux hommes quittent la ville de Chapleau pour se rendre dans l'Ouest canadien. Une demi-heure plus tard, la locomotive 1226 se dirigeant elle aussi vers l'ouest quitte la ville. Les hommes marchent sur le chemin de fer sans se douter que leur dernière heure approche. Ce fut de cette façon que la communauté littéraire française perdit un grand homme de lettres. Louis Hémon, dans la fleur de l'âge, décède de façon tragique, sans jamais savoir tout le succès que son roman Maria Chapdelaine obtiendra au fil des années. C'est à Chapleau que reposera sa dépouille.

Cette année est le 100e anniversaire du décès de Louis Hémon. Le Centre culturel du même nom prépare une commémoration pour l'événement et aimerait inviter toute la population de Chapleau à se joindre à eux. Les festivités auront lieu du 5 au 8 de juillet.

Long Term Forecast

Friday	High 23	Low 16	
Saturday	High 17	Low 9	
Sunday	High 15	Low 5	
Monday	High 18	Low 4	
Tuesday	High 22	Low 5	
Wednesday	High 23	Low 6	

For all DIESEL lovers out there

Only \$183 weekly O.A.C, Zero down, fees and licence included plus tax

2013 GMC SIERRA HD 2500 CREW-CAB with NO CHARGE ALLISON transmission.

Don't Wait!

Only one left at Mission Motors

Come In And See The Sales Team At Mission Motors Today

61 Mission Road, Wawa, ON, P0S 1K0
Phone (705) 856-2394

NIKOS Announces Results Of VTEM Survey Over Borden Lake Extension Project

Nikos Explorations Ltd. is pleased to announce the results of the high-resolution VTEM (Versatile Time-Domain Electromagnetic System) and magnetic airborne

survey recently completed over the Borden Lake Extension by Geotech Ltd. A total of 391 line kilometers were flown to cover the Property. The VTEM and magnetic surveys were completed in order to identify electromagnetic and magnetic anomalies that may be associated with gold mineralization and to help in the geological interpretation of this underexplored area.

represent major structures. There are also coincident weak electromagnetic anomalies that could indicate the presence of sulphide.

3. Similar cross-cutting magnetic anomalies and electromagnetic anomalies seven to eight hundred metres east of 2, but not as strong.

4. This area in the east of the property is characterised by a small positive magnetic anomaly with a coincident electromagnetic anomaly.

Nikos is planning a follow up program of mapping, sampling and prospecting to investigate the cause of the anomalies.

About Borden Lake Extension:

The Borden Lake Extension property lies immediately east of Probe Mines' Borden Lake gold property where recent exploration has defined pit constrained indicated resources of 3,686,000 ounces of gold (112,844 M tonnes grading 1.02g/t gold) and inferred resources of 625,000 ounces of gold (18,036 M tonnes grading 1.08g/t gold) at

Results of the surveys indicate electromagnetic and/or magnetic anomalies in four areas of interest (see map at http://nikosexplorations.com/projects/borden_lake/) described below in order of priority for follow up:

1. Several magnetic lineaments, one of which is interpreted to be a fault, intersect near the boundaries of claims 4260529 and 4260530. Such lineaments can reflect structures that are known to be important in the transport of gold-rich fluids. A north-east south-west lineament, apparent on a shaded relief map of the region, also crosses the Nikos claims in this area giving further reason for follow up.

2. Cross cutting NNW-SSE and NE-SW trending positive magnetic anomalies in claim 4259808 may

one that has been decided on.

The above was sent to Premier Kathleen Wynne and to Michael Mantha. I urge all citizens and businesses not to give up on this issue. Send your own note to the Premier by going to her [web page at www.premier.gov.on.ca](http://www.premier.gov.on.ca) and selecting "Contact Kathleen".

Relay.

To participate in this celebration supper, please register at Canada Brokerlink in Chapleau, at 16 Birch Street, by June 11th. Parking passes to the event can be delivered only to Survivors who register.

If you choose to participate in the Victory Lap only, which takes place at the Field of Dreams around 6:45, please register at the Brokerlink office also. Readers, we ask for your assistance to reach all cancer survivors of our area: please share this invitation with anyone you know who is a recently-diagnosed or long-time survivor, and encourage them to join us.

For more information, please call Joanne at 864-0724. See you there!

The Survivor Celebration Committee

Letter to the Editor

Dear Mr. Editor,
Please share this warm invitation with all of your readers who are cancer Survivors in the Chapleau area.

You're invited! A special cancer Survivor supper is planned for June 14th at the Chapleau High School Cafetorium. This private get-together allows anyone undergoing cancer treatment and one special caregiver, to get encouragement and support during a relaxed and fun supper, by spending a bit of time with recent and long-time survivors and other caregivers. The light meal also allows survivors and their caregiver to celebrate their fight against cancer and personal successes.

The Survivor Celebration supper starts at 5:30, and ends in time for those who choose to participate in the Survivor Victory Lap, which marks the official start of the

FormationPLUS

Centre de formation francophone pour adultes

tiendra son Assemblée générale annuelle le lundi 10 juin 2013 à 19 h à l'école secondaire Trillium

L'AGA sera suivi d'un goûter!

Keep the Parks Open!

Cont'd from P.1
Surely there is one employee at Ontario Parks or the Ministry of Natural Resources that can think outside the box and find a way to keep the Ontario Parks system functioning with all parks accessible to the people of Ontario. I sincerely hope that the Shoals Provincial Park could be opened for camping again or, at the very

least, that the gate be opened to give access to the boat launch, beach and day use area.

I do not believe it is right to close a park to by glancing at a bottom line and not taking a closer look at other alternatives. We are not talking about millions of dollars here. Not even hundreds of thousands. Surely there is a better solution to this issue than the

The Chapleau Express

P.O. Box 457, Chapleau (Ont.) P0M 1K0
Telephone - Fax : 705-864-2579

e-mail : chaexpress@sympatico.ca

Published every Saturday/Sunday

Deadline for receiving ads is Wednesday at 4 p.m.

The Chapleau Express is delivered free of charge to every household each Saturday. If you have any comments, please feel free to contact us. Subscriptions: \$80.00 per year (Canada) \$160.00 U.S per year (U.S.A). Canadian Publications Products Sales Agreement #30183799

The publisher or editor of The Chapleau Express reserves the right to edit or withhold from publication any letter for any reason whatsoever. Once received, all letters become the possession of The Chapleau Express. Letters reflect the opinion of the author, not necessarily that of The Chapleau Express or its staff.

OBITUARY

Jacqueline "Jackie" GLABB



Passed away peacefully at the Chapleau Health Services on Monday May 27, 2013 at the age of 84 years. Beloved wife of Elwood Glabb. Proud and loving mother of Elizabeth Glabb, Peter Glabb (Julie), Ken Glabb (Judy), Rick Glabb (Terri Robertson) and Carol Lasante (Michel). Cherished grandmother of Jeanie, Zoe, Chelsea, Jenny, Jesse, Jori, Zack, Autumn, Ethan, Jordan, Nicholas, Jaimie and Sarah. Dear sister of Juliette Payette (late Billy), the late Romeo Morin (Beatrice), the late Yvon Morin (Velma), the late John Morin (late Betty Ann) and the late Gilles Morin (Estelle). Dear sister-in-law of the late Ted and Marion Demers. Jackie will be fondly remembered by her many nieces and nephews. Family and friends were invited to attend a Funeral Mass at Sacred Heart Church on Friday May 31, 2013 at 11:00 a.m. with Reverend Sebastien Groleau officiating. Interment at the Chapleau Municipal Cemetery. Memorial donations made to the Chapleau Health Services Long Term Care or to the Sacred Heart Church would be greatly appreciated. (Arrangements entrusted to the P.M. Gilmartin Funeral Home, Wawa, 1-800-439-4937).

a 0.5g/t cut-off grade.

About Nikos Explorations:

Nikos Explorations is a Canadian based mineral exploration company focused on the acquisition and exploration of prospective gold projects in the Americas. The com-

pany has 44,475,406 shares issued and outstanding and trades on the TSX Venture Exchange under the symbol NIK.

Roger Moss, PhD., P. Geo., is the qualified person for all technical information in this release.

Great Business Opportunity

Owners want to retire

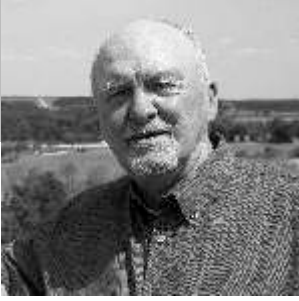
A well established corner store business as well as the Starlite Building.

Please see Diane at the corner store for more details

Mike McMullen and Ian Macdonald confirm location of Hudson's Bay Company Outpost at Chapleau in new research

Chapleau Moments

by
Michael J. Morris



Mike McMullen and Ian Macdonald are changing the conventional wisdom of 100 plus years in the history of Chapleau with their revelations about the location of the Hudson's Bay Company Outpost commonly believed to have been at the Old Fort site at Mulligan's Bay. Mike, my cousin, and Ian, my longtime friend and professor emeritus at the University of Manitoba, have spent countless hours researching, which included a recent trip to Chapleau, before revealing their conclusions here. Their findings are bound to spark a lively discussion and that's fine.

It has been a great privilege to have been a small part of their research project, and I thank Mike and Ian for sharing with me. I also extend my most personal thanks to Chief Anita Stephens of the Chapleau Ojibwe First Nation for her assistance in making their visit to the Memegos site possible.

My email is mj.morris@live.ca

By MIKE McMULLEN and IAN MACDONALD

In the early 1880s, as the Canadian

Pacific Railway (CPR) was constructing its mainline through Northern Ontario, the Hudson's Bay Company (HBC) at Michipicoten on Lake Superior, decided to build three outposts that would be strategically located near three towns that would be built along the CPR line. The objective was to intercept the Natives and carry out trading activities with them before they got to these new towns and the storekeepers that would be located there. One of these posts was the HBC Chapleau Outpost, which was built in the fall of 1884 and reported to the Michipicoten Post. The other two outposts were located at Dog River and Magpie.

We know from the HBC Archives that the post consisted of three buildings. Two photographs from the CPR Corporate Archives confirm this and show that they were located on flat land near a shoreline. These two photographs, taken by the photographer accompanying the CPR survey crew in 1884, show the outpost under construction. They were published in Van Horne's Road by Omar Lavallee in 1974. For many years, it was

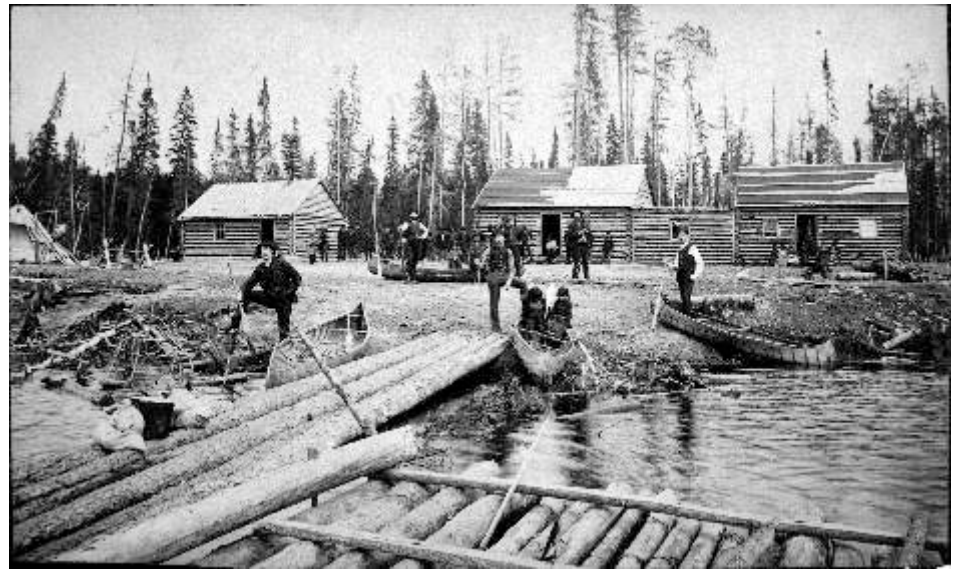
commonly believed that these photographs were taken at the Old Fort site at Mulligan's Bay.

We believe that the Ojibwe families in these photographs were enticed to move to the Chapleau area from the Gros Cap Reserve at Michipicoten because of opportunities associated with construction of the HBC Outpost, the CPR and logging operations.

For the past two years we have been working collaboratively on early Chapleau social and economic history, including the HBC presence in the Chapleau area. One of our interests has been to verify where the Chapleau Outpost was located. Material from the HBC Archives in Winnipeg, Library and Archives Canada in Ottawa and other Chapleau-related material, such as *Pioneering in Northern Ontario*, by Vincent Crichton, led us to conclude that the site was about one mile south of the Chapleau CPR station on the east bank of the Nebskwashi River.

This places it at the location where members of the Memegos family lived for many years – commonly referred to now as the Memegos site.

Less than two years after constructing this Post, HBC decided that with the



HBC Chapleau Outpost under Construction (1884) CP Archives and Ian Macdonald



Ojibwe Families at HBC Chapleau Outpost Site (1884) CP Archives and Ian Macdonald



Memegos Site on I.R. 61 on East Bank of Nebskwashi River (1924) Vince Crichton collection

growing population in Chapleau, the company would establish a general store in the downtown area. It was built on two lots at the southwest corner of Young and Birch streets in late 1886.

When Chapleau was made headquarters of the Michipicoten district, responsibility for the Chapleau Outpost was transferred to Chapleau. Less than three years later, suffering from

competition from other Chapleau general merchants and a general decline in the fur trade, HBC closed the Chapleau Outpost in 1889.

In 1903, the

Cont'd on P.5

Chapleau Cree Auto/Truck

Monday - Friday
8:30 a.m - 4:30 p.m.

"Preventive Maintenance keeps you on the road"

FOX LAKE RESERVE

CALL
864-9090
for an
appointment

Preventing rabies

Protect Yourself, Your Family, And Your Pets

With warmer temperatures, wild animals become more active, and this increases your chances of being exposed to rabies. It's always important to avoid wild animals and stray pets, but the law does require owners to keep their pet's rabies vaccinations up to date.

Although foxes, raccoons, skunks, and bats are the main carriers of rabies in Ontario, household pets are key links to

spreading the disease from wild animals to humans.

The Health Unit investigates all reported animal bites and scratches. Most investigations involve pet cats and dogs, although some involve strays and wild animals.

"Last year, the Health Unit investigated over 300 animal bites or situations where a person may have been in contact with a rabid animal,"

said Allan McDougall, an environmental support officer with the Health Unit. "In relation to these cases, 27 people were vaccinated against rabies as a precaution."

Rules to Follow Around Animals

- Do:
- Ask the owner's permission before touching a pet.
 - Approach pets slowly and carefully.
 - Stay away from strays and wild animals.
 - Stay calm around

animals.

Don't:

- Don't make loud noises around pets.
- Don't bother a pet while it is sleeping or eating.
- Never tease an animal.
- Children should never try to help a hurt animal; get an adult to help.

Rabies is fatal if you are infected and don't receive treatment in time. The rabies virus spreads in saliva through a bite, scratch, or a cut, or through the moist tissues of the mouth, nose, or eyes.

If an animal bites or scratches you:

- Immediately wash the wound with soap and water.
- Get medical attention as soon as possible.
- Report the bite or scratch to the Health Unit and provide as much detail as possible, for example:
 - o the name and address of the pet owner

o a description of the animal

o any other information that will help find

the animal

To report a scratch or bite, or for more information, call the Sudbury & District Health Unit at 705.522.9200, ext. 398, toll-free 1.866.522.9200. Visit www.sdhu.com for more information.



Plan to Join Us!!

The Chapleau Children's Service Provider Network invites all families to a

FREE OPEN HOUSE

This is an opportunity to find out what services are offered for children in the community of Chapleau.

There will be food, beverages, children's activities, draws and door prizes.

When: Friday, June 7, 2013 from 5 – 7 p.m.
Where: Community Centre (Arena)

For more information please call **The Chapleau Child Care Centre** at 705-864-1886 or stop by the Centre at 28 Golf Road



The Algoma District School Board invites applications for the following position:

Manager of Finance

Primary responsibility is to plan, organize, control and provide financial management including financial reporting, forecasting, general accounting, purchasing, payroll and tax functions for a school board covering a large geographic area.

Candidates should possess a professional accounting designation (CA, CMA, CGA) and a recognized university degree as well as several years of progressively more responsible experience within a finance and accounting environment. Candidates must also possess excellent verbal and written communication skills; strong analytical skills; familiarity with integrated payroll and accounting information systems; proficiency in word processing, spreadsheet and database applications; possess organizational and leadership skills to manage in a team based environment and interpersonal skills to liaise with and support schools and administration in financial matters. Knowledge of accounting concepts for Ontario school boards and experience in educational finance would be beneficial.

The successful candidate would be responsible to conduct efficient and accurate reporting to meet all internal and external financial reporting requirements; ensure that financial functions are carried out within the policies and procedures of the Board and government legislation; prepare the Board's annual financial statements, supporting schedules and reports; analyze, interpret and respond to relevant school board financial legislation including the Education Act, Regulations and the Student-Focused Funding Model.

For further information, interested candidates may contact Joe Santa Maria, Superintendent of Business at (705) 945-7212 or access the Board website at www.adsb.on.ca.

Resumes, outlining qualifications and experience, will be accepted until **4:00 p.m. on Monday, June 3, 2013** and should be forwarded to:

Joe Santa Maria, Superintendent of Business
Algoma District School Board
644 Albert Street East
Sault Ste. Marie, Ontario, P6A 2K7
Fax (705) 942-2540 Email santamj@adsb.on.ca

Only candidates who are short-listed will be contacted for an interview and three professional references will be requested at that time. The successful candidate, as a condition of employment, will be required to provide a current criminal background reference check, which is acceptable to the Board.

ALGOMA DISTRICT SCHOOL BOARD - Reaching to the Future

Lucia Reece
Director of Education

Jennifer Sarlo
Chairperson

CHAPLEAU HEALTH SERVICES

NOTICE OF ANNUAL MEETING

The 19th Annual General Meeting of Services de santé de Chapleau Health Services Corporation will be held on:

Wednesday, June 12, 2013
4:30 p.m
Bignucolo Residence

Agenda will include:

1. Reports of Activities
2. Report of the Auditors
3. Election of Directors
4. Other Business

The public is welcome.

Corporation membership fees must have been paid by April 12, 2013 in order to vote at this meeting. Copies of the Agenda and Annual Report will be available for pickup at the hospital on Tuesday, June 11, 2013.

SERVICES DE SANTÉ DE CHAPLEAU

AVIS D'ASSEMBLÉE ANNUELLE

La 19ième assemblée annuelle de la Corporation des Services de santé de Chapleau Health Services aura lieu le:

mercredi 12 juin, 2013
16h30
Résidence Bignucolo

L'ordre du jour comprendra:

1. Rapport sur les activités
2. Rapport des vérificateurs
3. Élection de directeurs/rices
4. Autres affaires

On invite le public à y assister.

Vous deviez payer la cotisation annuelle avant le 12 avril, 2013 afin d'avoir le droit de vote lors de cette assemblée. L'ordre du jour et le rapport annuel peuvent être ramassés à l'hôpital mardi le 11 juin 2013.



Chapleau Moments

Cont'd from P.3

Ojibwe families, who had been living near Chapleau for nearly 20 years, petitioned for land of their own. The Indian Agent, William L. Nichols, supported their request and recommended to J. D. McLean, Secretary of Indian Affairs, suitable land close to Chapleau for this purpose. This land was on the east side of the Nebskwashi River where he wrote that there was an HBC post that was now in a state of decay. Indian Affairs approved the request and negotiated

with the Province of Ontario for the purchase of this land, which would be paid for by these Ojibwe families. The land was surveyed in 1904 and became I.R. 61.

Over time the Ojibwe would receive more land near Chapleau with three more reserves being added: I.R.61A, I.R. 74 and I.R. 74A.

A photograph in the on-line Vincent Crichton Collection (Volume 4, Picture 30) taken in 1924, shows buildings on I.R. 61 (Memegos site) from

across the river near the CPR tracks south of town. There appear to be seven buildings and two of them are quite similar to two of the original HBC buildings that are in one of the CPR 1884 photographs.

We believe there is good probability that they are the same buildings and that they were repaired and upgraded by the Ojibwe families following their purchase of the 220 acres (I. R. 61) that included the HBC site.

Before finalizing our conclusions, we felt it necessary to visit the Memegos site in person and to do it in the spring before the growing season and before the black flies are out. Michael Morris contacted Chief Anita Stephens of the Chapleau Ojibwe First Nation and she gave us permission to visit the site. Josh Memegos and Fabian Picody took us in and out on Tuesday, May 14, 2013, two days after the more than 30 cm snowfall in Chapleau.

We found the remains of three buildings, but no log buildings. Apparently, many buildings were vandalized beginning in the late 1960s. The site is relatively level and uncomplicated, sufficiently high to avoid seasonal flooding and ideally suited to an HBC outpost that had to be built quickly. The shoreline condition, while not a sandy beach, does allow for easy beaching of canoes.

This site condition tends to be an anomaly as most land along this stretch of the river appears challenging and difficult to clear and build on. The view from the site across the river to the other side is quite similar to the CPR 1884 photograph that has the river in the background. The day



Fabian Picody, Ian Macdonald, Josh Memegos in the Bush. (May 2013) Mike McMullen

before our visit to this site, we walked down the tracks in the snow to about a mile south of town to duplicate the 1924 Crichton Collection photograph view of the Memegos site on the other side of the river. The topography is very similar.

Before leaving Chapleau we had the pleasure of talking with Elder Eva Memegos and we showed her pictures of the Memegos site. She and her husband Adam moved to this location in 1946 when they were married. She identified buildings from the 1924 Crichton Collection photograph as still being on the site in the late 1940s when there were about 10 buildings there. She showed us the building that she lived in (one of the buildings that we believe was one of the original HBC buildings from 1884) and pointed out the two churches on the site: one Anglican and one Roman Catholic.

We are confident that our research has verified where the HBC Chapleau Outpost was located. We continue to look for information to determine what was at the Old Fort location at Mulligan's Bay. This property, owned by Bruce Poynter, has a natural sandy beach and is located close to the Loon Lake portage.



Ian Macdonald and Mike McMullen on Memegos Site with Nebskwashi River in the Background (May 2013) Mike McMullen

This location, at the southern end of the Nemegosenda and Keksquasheshing Rivers, makes it an identifiable and inherently important place regardless of what may have been built on it.



Anita Stephens, Chief of the Chapleau Ojibwe First Nation with her dog Nick. (Anita Stephens collection)

Spirituality and Holism

The Métis Nation of Ontario

COMMUNITY GATHERING

Senator Micheline Boisvert will be speaking with participants regarding spirituality and Holism

11:30 - 3:00 pm, June 6, 2013

Peace Park - Chapleau



For more information and to register in advance contact:

Marissa Stringer
705-264-3939 or

marissas@metisnation.org



I.D. Photos
FAC - PAL

864-4376

RBC Dominion Securities Inc.

Anthony Pucci, B.Comm., FMA, Vice President

Anthony will be pleased to advise you on a wide variety of investment services:

- Personalized retirement planning
- Tax-minimization strategies
- Investment portfolio analysis
- Stocks, bonds, GICs and mutual funds



Anthony's next visit to RBC Royal Bank Chapleau Branch will be on **Tuesday, June 11th, 2013**

Call 1-800-557-2396 for a complimentary appointment.

Professional Wealth Management Since 1901



RBC Wealth Management
Dominion Securities

RBC Dominion Securities Inc.* and Royal Bank of Canada are separate corporate entities which are affiliated. *Member-Canadian Investor Protection Fund. RBC Dominion Securities Inc. is a member company of RBC Wealth Management, a business segment of Royal Bank of Canada. ©Registered trademarks of Royal Bank of Canada. Used under licence. © 2012 Royal Bank of Canada. All rights reserved.

Canadians have a double standard on distracted driving



(NC)—A recent poll by Allstate Insurance

Company of Canada shows that although 94 per cent of respondents are aware of current distracted driving penalties, only seven per cent say this would prevent them from driving distracted. Respondents were more likely to name awareness of the dangers of distracted driving as a deterrent.

However, this awareness hasn't lead to a significant change on the roads. Insurance industry research shows that while most people understand the dangers of distracted driving, and disapprove of the behaviour, many of these individuals admit to engaging in those practices.

"We found that

89 per cent of teen respondents said they would voice a concern if they were a passenger in a vehicle where a driver was driving distracted, and yet many of these same respondents admit to doing it themselves," says Saskia Matheson, spokesperson for Allstate Canada.

Some of the most common distractions reported in the

poll include drivers adjusting music (82 per cent), eating or drinking (59 per cent) and talking on the phone without a hands-free device (15 per cent).

"Car crashes are the leading cause of death among youth in Canada, and distracted driving puts everyone in danger," says Matheson. "We need to personalize the risks

and consequences and turn awareness into action and real behavioural change."

Matheson says tools and resources like Allstate Canada's distracted driving pledge and parent-teen contract (available at goodhandsadvice.ca/distracted) can help parents and educators talk to kids about safety behind the wheel.

New Principal named at Chapleau High School



Nicolle Schuurman

Originally hired in 1997 as a teacher at Chapleau High School, Nicolle Schuurman has provided leadership in Guidance, Special Education and Student Success.

In addition, she has been a lead in several initiatives such as Aboriginal Education, Character Education, the School Climate Survey and School Improvement.

In her role as secondary vice-principal, Nicolle has been a key leader in assisting with the transition of elementary staff and students over the past year.

Nicolle Schuurman will assume the role of principal (JK-12) at Chapleau School, effective September 2013.

With the retirement of an elementary principal in the North Shore, the appointment of one elementary principal was approved.

PUBLIC NOTICE OF APPLICATION FOR CONSENT

Clause 53(5)(a) of the *Planning Act*

The Minister of Municipal Affairs and Housing has received **Application No. 52-C-130001** for a consent in the District of Sudbury, unincorporated Township of Cochrane, east of Chapleau, on lands described as Part of Lot 11, Concession 1, being PINs 73099-0036 and 73099-0040. The purpose of the application is to sever approximately 0.38 hectares, containing 2 garages from a 30+ hectare vacant parcel as a lot addition to PIN 73099-0055, PIN 73099-0033 and Parts 1 and 2 on reference Plan 53R-19059, on registered Plan M-627, having frontage on Mulligan Bay, containing a single dwelling and swimming pool.

The purpose of this notice is to inform the public of the nature of the application, invite public input, advise on how to make comments on the application and advise the public of future notification and appeal rights.

Inquiries and Written Submissions can be made to Ms. Anna Jansons, Assistant Planner at 705-564-6859 or 1-800-461-1193 ext. 46859 or fax 705-564-6863 or at the address below. Information about the application is also available to the public during regular office hours at the Ministry of Municipal Affairs and Housing, Municipal Services Office – North, 159 Cedar Street, 4th Floor, Suite 401, Sudbury, ON P3E 6A5.

Appeal of a decision of the Minister in respect of this consent may be made by any person or public body not later than 20 days after notice of the decision is given. If you wish to be notified of the decision of the Minister in respect of the proposed consent, you must make a written request to the Minister at the above address. If a person or public body that files an appeal in respect of the proposed consent does not submit written comments to the Minister before the Minister gives or refuses to give a provisional consent, the Ontario Municipal Board may dismiss the appeal.

AVIS PUBLIC DE DEMANDE D'AUTORISATION

Disposition 53(5)(a) de la *Loi sur l'aménagement du territoire*

La ministre des Affaires municipales et du Logement a reçu la **demande numéro 52-C-130001**, une demande d'autorisation pour des terres situées dans le district de Sudbury, canton non constitué de Cochrane, à l'est de Chapleau, décrites comme faisant partie du lot 11, concession 1, NIP 73099-0036 et 73099-0040. Cette demande a pour but de séparer environ 0,38 hectare de terrain contenant 2 garages, d'une parcelle vacante de plus de 30 hectares en tant qu'ajout de lot au NIP 73099-0055, au NIP 73099-0033 et aux parties 1 et 2 du plan de renvoi 53R-19059 du plan enregistré M-627, en bordure de la baie Mulligan, contenant une seule habitation et une piscine.

Le présente avis vise à informer le public de la nature de la demande, à solliciter l'avis du public, à lui expliquer comment transmettre ses commentaires concernant la demande et à lui donner des conseils concernant tout avis futur et tous droits d'appel.

Les demandes de renseignements et les présentations par écrit peuvent être adressées à Mme Anna Jansons, urbaniste adjointe, en composant le 705 564-6859 ou le 1 800 461-1193, poste 46859, ou par télécopieur au 705 564-6863, ou à l'adresse ci-dessous. Des renseignements sur la demande sont aussi disponibles durant les heures normales de bureau au Bureau des services aux municipalités du Nord du ministère des Affaires municipales et du Logement, 159, rue Cedar, 4e étage, bureau 401, Sudbury (Ontario) P3E 6A5.

Toute personne ou tout organisme public peut interjeter appel d'une décision de la ministre concernant la présente autorisation au plus tard 20 jours après l'avis de la décision. Si vous souhaitez qu'on vous informe de la décision prise par la ministre à propos du projet d'autorisation, vous devez en faire la demande par écrit à la ministre, à l'adresse susmentionnée. Si une personne ou un organisme public qui interjette appel à propos du projet d'autorisation ne présente pas ses commentaires par écrit à la ministre avant que cette dernière accorde ou refuse d'accorder une autorisation provisoire, la Commission des affaires municipales peut décider de rejeter l'appel.



Job Opportunity

Maison Boreal Home Inc. in partnership with Ontario Job Creation is looking for a Project Coordinator Project (52 weeks)

Job Description

- Open and organize an office for Maison Boreal Home Inc.
- Plan and participate at the Board meetings
- Help to organize fundraising activities
- Monitor the web site and facebook page
- Fill application forms for licenses, funds, grants
- Do some accounting
- Write letters

Requirements

- Use computer information and software such as Words, Excel, effectively
- Communicate effectively
- Capable of working independently and being self-motivated
- Innovative, organized, assiduous, diligent
- French and English is required

Eligibility

All individuals on employment benefits looking for employment are eligible as long as they qualify under one of the following two criteria:

- Anyone who has filed to receive employment benefits or whose benefits have expired in the last 3 years
- Anyone who has received employment insurance for maternity or parental leave in the last 5 years and wishes to re-enter the working force.

Interested candidates must apply in writing sending their resume before **May 29, 2013**, to Maison Boreal Home Inc., Box 867, Chapleau, P0M 1K0



THE LOCAL MARKET PLACE

FOR SALE - FOR SALE - FOR SALE

1998 Chevrolet Suburban 4x4, 6.5 l. Diesel 1500 with 2500 undercarriage. AM/FM CD Recent front diff & transfer case overhaul, new front shocks and wheel bearings, new fuel lines, rim mounted winter tires. Newer fuel tank (4yrs) Needs Engine. 276,000 kms. \$1700.00 obo. As is. Call 705-864-0889.

2010 Dodge Grand Caravan SE rear entry converted passenger wheelchair van. Asking \$27,500.00 firm certified+4 mounted winter tires (studs). Worth over \$55,000.00 new. Call 705-864-0889 ask for Mario or leave a message.

LOT FOR SALE - LOT FOR SALE

Serviced lot for sale. 30 Adele St. 55' x 135'. \$19,900. Call Timmins 705-363-0414 Jun1

SEPTIC TANK SERVICES

Chapleau Septic Services. Call Village Shops at 705-864-1114 for appointment and to make payments.

TRAILER SITES - TRAILER SITES

Waterfront trailer sites Mulligan's Bay. 705-864-1846 May25

WANTED - WANTED - WANTED

Housekeeper/Maintenance Person needed immediately person to do housekeeping duties and maintenance. Responsibilities to include cleaning cabins, boats, and debris around camp; maintenance of boats/motors, cabins and equipment; hauling of garbage, propane tanks (100 lb & 20 lb) and cutting wood. Job can be quite physically demanding. Person must have mechanical aptitude. 30 hours per week. Minimum 1 year college. Please call Grey Owl Camps 705-239-2888.

Chest freezer, 62" long by 27" deep in good working condition. Call Ray at Linamac 705-864-0589



Denise's

Café

31 Birch St.
705-864-2400

EAT IN OR TAKE OUT

We serve breakfast
& lunch daily **MON-FRI.**
6:00 a.m. to 3:00 p.m.

**STARTING FRIDAY
MAY 31ST WE WILL
BE CLOSING DAILY
AT 3 P.M.
FOR THE SUMMER
HAPPY HOLIDAYS!**

Adult Mental Health (18 yrs and up) and Addiction Services (all ages) offered at Turning Point. Located at 8 Lorne St. South. For professional, confidential services, please call 705-864-1919. Open Monday to Friday from 8:30am to noon and 1pm to 4:30pm.

Services de santé mentale pour adultes (18 ans et plus) et les services de toxicomanie (tous les âges) offerts à Point décisif. Situé au 8, rue Lorne Sud. Contactez-nous au 705-864-1919 pour des services professionnels et confidentiels. Les heures ouvrables sont de 8 h 30 à midi et de 13 h à 16 h 30.

ALCOHOLICS ANONYMOUS
Offers help to anyone who desires to stop drinking. Open discussion meeting on Sundays at 2:00 p.m. Trinity United Church basement. Telephone contacts: 864-2786

ALCOHOLICS ANONYMOUS
Offers help to anyone who has the desire to stop using drugs/alcohol. Open discussion meeting on Saturday at 7:00 p.m. Pentecostal Church. Call 705-860-9769 for support.

Alcoholics Anonymous (A.A.) Open discussion meeting every Monday evening. Brunswick House First Nation Band office lounge 7pm. Narcotics Anonymous (N.A) every Tuesday same place same time. NNADAP Worker @ 864-0174 info.

Societe Alzheimer Society meetings will be held at the Chapleau Hospital every 1st Monday of each month starting from 7:00 p.m. to 9:00 p.m.

CHADWIC HOME, FAMILY RESOURCE CENTRE. Offers shelter, emotional support, and information for women and their children who are in crisis situations. We have a Toll Free Crisis Line which is staffed 24 hours a day. We can arrange for free transportation to the Centre for women who live in the Algoma/Chapleau area. We also offer support to women who live in the communities of Chapleau, White River, Dubreuilville, and Hornepayne through our Outreach Program. Our Outreach Worker travels to those communities to meet with women who need emotional support as well as information about their rights and options. If you need to speak with the Outreach Worker when she is in your community, you can call the Centre at any time to set up an appointment. You do not need to be a resident of the Centre in order to use our services. If you need someone to talk to or if you just need someone to listen, call our Toll Free Crisis line at 1-800-461-2242 or you can drop in at the Centre. We are here for you.

Pimii Kamik Gas Bar & Gift Shop

Located on the Chapleau Cree
First Nation



SUMMER HOURS

will be from 7 a.m. - 10 p.m.,
7 days a week

Drop by and check out our line
of

**Authentic Native Crafts,
Unique Gift Ideas, Jewellery,
and Gift Certificates TOO!**

We also carry road trip
snacks, which includes
Subs, Chips, Pop, plus a
whole lot more.

Your Propane Refilling
Station



Your ad could be here!



SUPERIOR EAST/SUPÉRIEUR EST
Community Futures Development Corporation
Société d'aide au développement des collectivités

Attention: Are you a Small Business Owner? Do you require financing? Thinking of starting a business?

The staff of the Superior East Community Futures Development Corporation will be in Chapleau on June 7th, 2013. The CFDC offers small business loans and counselling to current small business owners or individuals looking at starting a business. **To make an appointment to discuss financing options, please call 1-800-387-5776, ext. 221.**

Attention: Êtes-vous propriétaire d'une petite entreprise? Êtes-vous en besoin d'aide financière? Vous-voulez vous partir en affaires?

Le personnel de la Société d'aide au développement des collectivités Supérieur Est sera à Chapleau le 7 juin, 2013. La SADC offre des prêts financiers et des services-conseils aux propriétaires actuel(le)s de petites entreprises et aux individu(e)s intéressé(e)s à se partir en affaire. **Pour prendre rendez-vous et discuter de vos besoins d'aide financière ou pour obtenir des services-conseils, communiquez avec nous au 1-800-387-5776, poste 221.**



Peak Roofing

Shingle installation and repairs
Soffit & Fascia, ventilation

705-864-2602

peakroofing@mail.com

BODYLINES BY CRACK LTD.



**5 Licensed Bodymen
Insurance Claims
Windshield Repairs
and Replacement
State of the Art Frame**

ALL WORK GUARANTEED
PLEASE CALL 705-856-1406

BERRY'S FREIGHT SERVICES

TIMMINS - CHAPLEAU -
TIMMINS
MONDAY TO FRIDAY
1lb. to 10,000 lbs.

FOR QUALITY
SERVICES AT
INEXPENSIVE PRICES
GIVE US A CALL AT
1-705-264-4334

SLOMA CLEANERS

Drop off at Between
Friends (Cedar Grove)
Mon to. Fri. 8 am-
noon and 1-4 pm

ALL ADS ARE
ACCEPTED AT
DENISE'S FLOWER
SHOP
DEADLINE FOR
RECEIVING ADS IS
WEDNESDAY 4:00 p.m.

CLASSIFIED ADVERTISING RATES

Regular Classified Ads
First 25 words or less \$6.25
Each additional word \$0.16+GST
No refunds on
cancelled
classified ads.

NEW AT THE CHAPLEAU PUBLIC LIBRARY

NEW BOOKS

The Lost Boy - Camilla Lackberg

DID YOU KNOW?

There is pop and water for sale at the Library.

We have scans of all available newspapers
and clippings of the Chapleau area since
the late 1800's for viewing at a dedicated
work station.

Alain Bouffard

Sales Representative

61 Mission Road

Wawa, Ontario, P0S 1K0

Tel: 705-856-2394

Fax: 705-856-4290

alainbouffard@missionmotors.com



NEW & PRE OWNED
VEHICLE SALES

Goodwinch
SERVICE CENTER

HYUNDAI
24hr TOWING



ALLEMANO & FITZGERALD

Barristers and Solicitors

MICHAEL C. ALLEMANO, B.A., L.L.B.

Certified by the Law Society as a Specialist in Real Estate
Law

P.O. Box 10,

369 Queen St. E. Suite 103

Sault Ste. Marie, Ontario

P6A 1Z4

Phone (705) 942-0142

Fax (705) 942-7188

P.O. Box 1700,

37 Broadway Avenue.

Wawa, Ontario

P0S 1K0

Phone (705) 856-4970

Fax (705) 856-2713

Northern Lights Ford Sales

Andrew G. McKenzie

Travis Gendron



Highway 17 North

P.O. Box 1033

Wawa, ON. P0S 1K0

Business 705-856-2775

Fax 705-856-4862

tgendron@northernlightsford.ca

sales@northernlightsford.ca



I.D.
Photos
FAC - PAL

864-4376

Canada Day-here Again

Despite a low attendance at the open public meeting hosted by The Leisure and Cultural Services Committee on April 16th, many novel and interesting ideas were

offered for Canada Day activities.

The Committee could not adopt every idea; questions of a adequate room, resources and volunteers needed limited many activities. Still, we are thankful for each and every suggestion.

A wide range of activities is organized for Canada Day 2013. For the young we have a Children's Parade, Bike and Pram Decorating Contest and a Costume Contest. Add to these various games and face painting.

The sports-minded have a ball hockey tournament, a slapshot contest (radar), a precision shooting contest and a basketball skills contest.

Hungry! No problem! The Legion once again offers a BBQ and social and the Odd Fellows will

please the palette at their waterfront barbeque. The Cotton Candy Lady will satisfy the sweet tooth and the young can have a cold treat compliments of the Credit Union.

Other activities are the Rebekah's bingo, booth exhibits, show and shine for


motorcycles, amateur talent show, student art exhibits and horseback riding.

Future articles will detail many of the above mentioned activities.

What a great start to another great Canada Day!

Our biggest

shortcoming is not the number of activities but the number of people necessary to offer these. Volunteers are urgently needed. What's a few hours of your time if they contribute to a wonderful community event. Interesting in volunteering, call 864-0605.



CANADA DAY PHOTO CONTEST

This year the Chapleau Leisure and Cultural Services Committee adds another activity to the **CANADA DAY** schedule - a photo contest. The contest is open to all Chapleau residents, past and present. Each participant may submit up to three photos. The contest theme is "**Chapleau-my town**". All photos must be taken by participants. Photos must be 8x10 in size.

Final submission date is Monday, June 24th, 2013.

Prizes are supplied by The Chapleau Express.

First prize is \$100.00.

Second prize is \$50.00.

Submissions must be placed in a sealed, letter-sized, manilla envelope. The participant's full name, address and phone number must be written on the envelope. Submission envelopes are placed in a sealed box marked "PHOTO CONTEST" found at the George Evans Public Library. All submissions will be displayed during CANADA DAY weekend.

Any questions - call 705-864-0605.



INVITATION AUX MEMBRES

ASSEMBLÉE GÉNÉRALE ANNUELLE

du Centre culturel Louis-Hémon de Chapleau inc.

le lundi 10 juin 2013 à 19h

au cafétorium de l'École secondaire Trillium
9, chemin Broomhead

L'A.G.A. sera suivi d'un goûter

Pour être membre en règle vous devez avoir votre carte de membre 2013-2014

Les cartes de membre seront en vente sur place.

GREAT Gifts for Dads & Grads

<p style="text-align: center;">"Men in Black" SUITS</p> <p style="text-align: center;">Mix & Match Jacket & Pant size Reg. or Tall</p> <p style="text-align: center; font-size: 24px;">\$149.98</p>	<p style="text-align: center;">Dress Shirts and Ties</p> <p style="text-align: center; font-size: 24px;">20% off</p>	<p style="text-align: center;">Genuine Leather ID protector Wallets</p> <p style="text-align: center; font-size: 24px;">\$12.98</p>
<p style="text-align: center;">CRABTREE & EVELYN for Him</p> <p style="text-align: center; font-size: 24px;">BUY ONE GET THE SECOND ONE AT 1/2 price</p>	 <p style="text-align: center;">Stylish Fedoras from \$19.98</p>	<p style="text-align: center;">Assorted GRADUATION FRAMES</p> <p style="text-align: center;">Dresses, Capris, Tops</p> <p style="text-align: center; font-size: 24px;">20% off</p>

Other Little Things that we do!

Jewellery & Watch Repairs - Watch Battery Changes - Clothing Alterations - Helium Balloons - Engraving
Gift Certificates - Donation Cards - Gift Wrapping - Tuxedo rentals - Office Supplies - Computer Repairs

Chapleau Village Shops Sears

WORKWEAR • FASHIONS • JEWELLERY • GIFTWARE




864-1114

864-1114



864-1852



Now Open

Sexual Health Clinic

Located at the Chapleau District Family Health Team Office

Services include:

- low cost contraception
- testing and free treatment of STIs
- emergency contraception (morning after pill)
- pregnancy testing and options counselling
- sexual health counselling

Appointments are available **Tuesdays** from **1:00pm to 4:30pm.**

Please call the Sudbury & District Health Unit Chapleau Office at **705.860.9200** to schedule an appointment.

