

Talk about good coffee!

Miss Muggins
Coffee and
Fresh Donuts



CHAPLEAU EXPRESS

Vol. 15, Issue 42, July 9, 2011

PIZZA HUT & KFC
There's a Reason
We're Number 1
"0 TRANS FAT"
864-0911



Everyone wins thanks to Relay For Life 2011



The Tembec team demonstrated great spirit and determination in their fight against cancer. *L'équipe de Tembec, a démontré beaucoup d'enthousiasme et de détermination dans leur lutte contre le cancer.*

By Joanne Laughland

Chapleauites came to celebrate, to honour and remember loved ones, and to fight back against cancer, at the Relay For Life held June 17th at the Field of Dreams. And what a successful event it was!

More spectators and registered participants than

ever before got caught up in the energy and fun of this community event. Numerous Vegas-style activities, from dice and card games to wedding packages at the Chapel of Love, entertained young and old, while raising funds for teams. Beautiful costumes, delicious food, energizing music delighted everyone's senses.

The Chapleau Relay for Life committee successfully puts on this event annually, on a very small budget, thanks to the hard work of a legion of volunteers, and to the generous support from local businesses that help us put on our Relay.

A delicious Survivor Celebration Dinner, graciously sponsored by the Catholic Women's League, the New Horizon Rebekahs, Chapleau High School and the Union culturelle franco-ontarienne, allowed long-time survivors to meet and support newly-diagnosed patients and their families. Over 350 years of survival were represented by those in attendance, with the longest survivor of 36 years, and the most recently diagnosed being 8 weeks.

Children's choirs made the opening ceremonies and luminary lighting

very special. Best Start Hub provided craft-making and fun activities for the many children attending Relay with their families. Even the DJ Party Marty, played some lively children's tunes for the Kids' Laps!

And the TEAMS: sixteen of them this year, ranging from 10 to 22 members, all working together for a common goal. Most were families and friends remembering or honouring a loved one, as well as the Tembec team walking for Barry, and a kids' team learning about helping others by example, with their parents. Online

and off-line, on-site and pre-event, their creative hard-work beat all the Chapleau records for fund-raising for cancer.

We are all winners thanks to this event: services like our newly-implemented Chapleau Cancer Patient Ride Program, the Daffodil Lodge in Sudbury, the Regional Breast-Screening program, better equipment and detection techniques, improved treatment, all of these are benefits that we can depend on locally and in our region, thanks to the success of our annual Chapleau Relay.

No one does a Relay for recognition,

but some exceptional teams and individuals were recently thanked and congratulated for their hard work, creative fund-raising and contagious energy and spirit. Here are the event winners for 2011: Most Pledges Collected - Team:

1st Place: Full House – team captain Rosane Connelly – Collins Home Hardware prize
2nd Place: Ashley's Angels – team captain Janice Sweeney – Canada Brokerlink Prize
3rd Place: Gentle Warriors – team captain Denise Fortin – Chapleau Real Estate Prize



Elvis, portrayed by Vicki St. Amand, stands at the Chapel of Love during the Relay for Life. Elvis' team, the Vegas Brides, raised money by marrying some 27 famous couples during the event, including Mayor Byham and Dianne.

Elvis, et l'équipe des Vegas Brides ont prélevé des fonds lors du Relais pour la vie à leur Chapelle de Las Vegas, en offrant des cérémonies de mariage à prix raisonnables.

Long Term Forecast

Friday

High 22
Low 14



Saturday

High 24
Low 13



Sunday

High 24
Low 15



Monday

High 23
Low 16



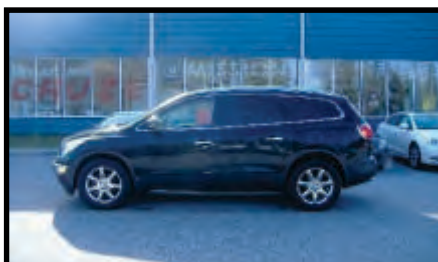
Tuesday

High 20
Low 13



Wednesday

High 22
Low 11



Vehicle of the Week
2008 Buick ALLURE

Body Style: BUICK ENCLAVE - 65,000km
Exterior Colour: CARBON BLACK METALLIC
Interior Colour: EBONY LEATHER
4 Door - 6 CYLINDER GAS - Automatic
Transmission - Four Wheel Drive
Stock #: 1103U
Luxury crossover!!
What a beauty! - Loaded - Power Sunroof
Air conditioning - Power windows & locks
Cruise control - Heated Seating - Audio steering wheel controls - Video DVD player - Onstar - Tow package
Tinted windows - Leather trim
19" aluminum wheels
Come in and test drive this incredible deal!

Price: \$34,888.00



61 Mission Road, Wawa, ON, P0S 1K0
Phone (705) 856-2394

Relay for Life

Cont'd from P.1

Best Individual fundraiser – Janice Sweeney
 Most off-line pledges – Rosane Connelly
 Most online pledges –

Maartje Wright
 Honourable Mentions – other individuals raising more than \$ 5 0 0 : C a r o l e Branchaud, Shelley Bernier, Denise Fortin,

Leo Brunette, Louise Henderson and Suzanne Doyon
 Best off-site fundraiser – the Queens of Hearts
 Best on-site fund-

raiser – Full House
 Best Decorated Site – Chapel of Love – Vegas Brides
 Best Team Spirit – Ashley's Angels
 Best Costumes – Feathered Foxy Ladies – show girls from Fox Lake
 Best Individual Costume – Megan Donovan

Relay 2012 has already been scheduled for Friday, June 15th. If you would like to join the organizing committee as it plans next year's event, please contact Rosane at 864-1010 or Ethel at -1691. Our first task will be finding a theme that will be as exciting and fun as this year's Vegas theme...put your thinking cap on and join us!

The Township of Chapleau is pleased to announce the arrival of WFN to present us with our prize for winning the Ultimate Fishing Town Canada Contest.

The presentation will be held on Thursday July 21 at 11am at the Waterfront/Pavilion area.

To show thanks to the community for all their hard work and dedication to the contest, the Township will be providing a free BBQ lunch to all in attendance.

La municipalité de Chapleau est heureuse d'annoncer que le réseau WFN sera parmi nous pour la présentation officielle du prix de Village de pêche par excellence.

La cérémonie aura lieu le jeudi 21 juillet à 11h sur le terrain du pavillon à la plage municipale.

En guise de remerciement aux citoyens pour leur participation au concours, la municipalité offrira un BBQ gratuit sur l'heure du dîner à tous ceux et celles qui seront présents pour la cérémonie.

The Chapleau Express
 P.O. Box 457
 Chapleau (Ont.) P0M 1K0
 Telephone - Fax : 705-864-2579
 e-mail : chaexpress@sympatico.ca
 Published every Saturday/Sunday
 Deadline for receiving ads is Wednesday at 4 p.m.

The Chapleau Express is delivered free of charge to every household each Saturday. If you have any comments, please feel free to contact us. Subscriptions: \$80.00 per year (Canada) \$160.00 U.S per year (U.S.A)
 Canadian Publications Products Sales Agreement #30183799

GOING TO CHURCH

Catholic Church SACRED-HEART OF JESUS PARISH
 PAROISSE SACRÉ-COEUR DE JÉSUS
 26 Lorne Street North
 OFFICE- 21 Lansdowne St.N. 864-0747
 New Schedule Effective Nov. 7/09
 Nouvel horaire à compter du 7 nov/09
 Sat/sam 7 p.m. (E or F)
 Sun/dim 9:30 a.m. (F or E)
 Weekdays/Semaine lun-ven 9:30 a.m.
 Wed/Mer (Hosp) 11:30 a.m.
 Fr. Sébastien Groleau

CHAPLEAU PENTECOSTAL CHURCH
 9 Elm Street (P.A.O.C.)
 864-0828
 Sunday 10:30 a.m. & 7 p.m.
 Wed. Family Night 7-8 p.m.
 Fri. Story Hour 3:30-4:30 p.m.
 Pastor Dan Lee

TRINITY UNITED CHURCH
 Corner of Beech and Lorne
 864-1221 Sunday Service and Sunday School 11:00 a.m.
 Anna Chikoski
 Soup Kettle every 2nd Wednesday of the month
 www.angelfire.com/on/trinityuc

OUR LADY OF SEVEN SORROWS PARISH
 PAROISSE NOTRE-DAME-DES-SEPT-DOULEURS (Foleyet)
 Liturgy of the Word
 Liturgie de la Parole
 Mass 2nd-4th Sunday/
 Messe 2e-4e dim 12:00 Noon (B)

ST. JEAN DE BRÉBEUF (Sultan)
 Liturgy of the Word
 Liturgie de la parole
 Mass 3rd Sunday
 Messe 3e dim 12:00 Noon (B)
 Permanent Deacon
 Diacre Permanent
 Ted Castilloux

Diocese of Moosonee Anglican Church of Canada
 ST. JOHN'S CHURCH
 4 Pine Street West
 705-235-5556
 Sunday Service 10:30 a.m.
 The Rev. Iris Montague

ST. MARY'S ANGLICAN CATHOLIC CHURCH
 78 Devonshire Street
 864-0909
 Sunday Service 10 a.m.

COMMUNITY BIBLE CHAPEL
 Corner of King and Maple
 864-0470
 Communion Service 9:30
 Family Bible Hour 11 a.m.
 Including Sunday School
 Evening Bible Study and Ladies Bible Study during the week
 Transportation available
 Al Tremblay

INSPECTION

Notice of Aerial Herbicide Spraying Martel Forest and Pineland Forest

The Ontario **Ministry of Natural Resources (MNR)** invites you to inspect the MNR-approved **Aerial Herbicide Spray Project(s)**. As part of our ongoing efforts to regenerate and protect Ontario's forests, selected stands on the **Martel Forest** and **Pineland Forest** will be sprayed with herbicide to control competing vegetation, starting on or about **August 1, 2011 (EACOM Timber Corp.)** and **July 15, 2011 (Tembec)**. On the Pineland Forest, the herbicide Vision silviculture herbicide, registration number P.C.P. 19899 *Pest Control Products Act* and/or VisionMax Silviculture herbicide, registration number P.C.P. 27736 *Pest Control Products Act* will be used. On the Martel Forest, Vision Silviculture herbicide, registration number P.C.P. 19899 *Pest Control Products Act*, Vantage Silviculture herbicide, registration number P.C.P. 26884 *Pest Control Products Act*, and/or Forza Silviculture herbicide, registration number P.C.P. 26401 *Pest Control Products Act* will be used.

The approved project description and plan for the aerial herbicide project is available for public inspection at the EACOM Timber Corp. (Pineland Forest) and Tembec (Martel Forest) offices and on the MNR public website at ontario.ca/forestplans beginning **April 1, 2011 until March 31, 2012** (Pineland Forest) and **April 11, 2011 until March 31, 2012** (Martel Forest) when the annual work schedule expires. Ontario Government Information Centres at Chapleau and Timmins District Offices provide access to the Internet.

Interested and affected persons and organizations can arrange an appointment with MNR staff at the MNR District or Area Office to discuss the aerial herbicide project.

For more information or to arrange an appointment with MNR staff, please contact:

Pineland Forest:

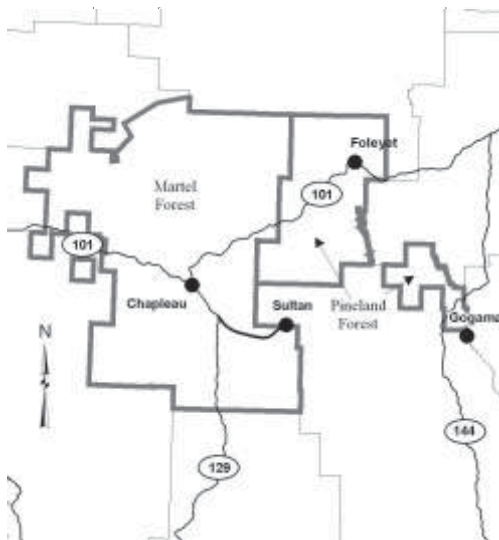
Mike Forrest, RPF or Kelly Ellis, RPF
 Operations Forester Area East Forester
 EACOM Timber Corp. Ministry of Natural Resources
 267 McChesney Road Chapleau District Office
 Timmins, ON P4N 7C3 190 Cherry Street
 tel: 705-267-3339 Chapleau, ON P0M 1K0
 tel: 705-864-3163

Martel Forest:

Al Tremblay or Mike Liukko, RPF
 Silviculture Coordinator Management Forester
 Tembec (Chapleau) Ministry of Natural Resources
 175 Planer Road Chapleau District Office
 Chapleau, ON P0M 1K0 190 Cherry Street
 tel: 705-864-3022 Chapleau, ON P0M 1K0
 tel: 705-864-3173

or call toll free: 1-800-667-1940 and ask to be forwarded to one of the contacts above.

Renseignements en français : 705-864-1710



HELP KEEP OUR COMMUNITY CLEAN
 EASY AS 1-2-3

Birth Announcement

Dean and Lisa Landry are proud to announce the safe arrival of their son, "Aden Jarmo George Landry" on Tuesday, June 14th, 2011 at 1:26pm. Aden weighed 8 pounds, 8 ounces. A very special thank you to all for the warm welcome.

Wilf Simpson described Chapleau as "thriving community" in the 1970s as trend to tear down and renew community changed its physical face more than any time in its history

Chapleau Moments

by
Michael J. Morris



Chapleau was a "thriving community" on the edge of the Chapleau Game Preserve, the largest game sanctuary in the Western Hemisphere in 1977, Wilf Simpson wrote in a community profile, prepared for the Chapleau Chamber of Commerce and the Township of Chapleau.

Wilf served as the township's deputy clerk for 22 years, and previously had been the editor of the Chapleau Post, where his father, Arthur Simpson had been the editor and publisher for many years.

He was also very well known for the Wilf Simpson Orchestra which played at countless number of dances in Chapleau, and was also a member of other musical groups.

After receiving a photo recently from Vince Crichton of Wilf playing with a Chapleau High School orchestra, with the members attending the school at the same time I did, I reread Wilf's profile, last published in 1977, where he shares his observations on the people, life and times of the community from its beginnings in 1885.

Wilf notes that the community was named after Sir Joseph Adolphe Chapleau who had served as prime minister of Quebec, secretary of state for Canada and Lieutenant Governor of Quebec.

He writes that one of the first uses of the Canadian Pacific Railway was in the

movement of troops west to quell the Riel rebellion. At this time, "the steel had not been laid past Missanabie, some 65 miles west of Chapleau and it was necessary for the troops to detrain at Missanabie and move the guns and equipment across the ice on Dog Lake and entrain on another train to continue their journey west".

He added that some of the equipment went through the ice and in 1977 it was believed there were still some relics to be found on the bottom of Dog Lake.

Wilf refers to Chapleau as a "robust community" before the gold rush that brought Timmins and the Porcupine area into prominence. A fascinating anecdote, Wilf told, at least to me, was the story of Robert J. Renison, a young Anglican priest who later became bishop of the Diocese of Moosonee, referring to Chapleau as the only "window" of the north. It was necessary for miners, trappers and surveyors to "trek through the bush to Chapleau to receive or mail letters and to use the modern railway facilities to send telegrams" after 1885 when the CPR arrived in Chapleau.

He also noted that many of Chapleau's First Nations citizens are descendants of those who brought their families "on the arduous canoe trip from James Bay up to Chapleau via the Albany waterway. It

may seem strange to some when I say 'up' to Chapleau but the waters of the Chapleau River flow north to Hudson Bay".

Chapleau also played a leading role in the construction of the Grand Trunk Railway, now Canadian National. When the right of way was being cleared and road bed being made ready, food and materials were shipped to Chapleau on the CPR. Wilf explains that the materials were unloaded at Chapleau and from there shipped to Elsas in barges and boats -- adding that "the route is still open and makes a fine canoe trip" with excellent fishing along the waterway.

Wilf writes that "isolation plagued Chapleau for over half a century" as except for the CPR there was no way in and out --- except of course by the waterways!

However, he writes about Arthur Grout and Earle Sootheran chartering a plane to fly out to the Goose River, catch a mess of speckled trout and present it to the steward on the Royal Train carrying King George VI and Queen Elizabeth on their Royal Tour on May 24, 1939. (As an aside, I just read this morning that the Lethbridge Hurricanes of the Western Hockey League, rivals of the Kootenay Ice from where I live in Cranbrook, presented season tickets to Prince William, their great grandson, and his wife Kate for the upcoming season.)

Wilf writes that it may be of some interest to know that in those years when cars were shipped to Chapleau on the CPR as there was no highway until 1949,



Wilf Simpson (centre) on sax playing at dance in Town Hall basement. From left Harry "Boo" Hong, R.J. Lemieux, Ken Schroeder, Wilf, Gordon Bolduc, unknown, Rita Morin.

Chapleauites going on vacation, would ship their cars to Sudbury, and off they went from there.

"The cost by freight on a flat car was less than \$100.00. A small thing -- but not so small when one considers the CPR excursion fare to Toronto was \$8.55 return. Passengers were welcomed with open arms in those days".

By 1977, when Wilf wrote his final profile, Chapleau was no longer isolated, and was known as the "Crossroads of the North" with highways linking the community to the outside world. (There was also daily air and bus service and the passenger trains were still running.)

Chapleau boasted a "fine shopping area" a movie theatre, two hotels and five motels, and an "excellent safe supervised beach and playground".

Wilf writes that the 1970s "saw more changes in the face of Chapleau than any years in its history and "the trend to tear down and

renew" was continuing. Gone were the old CPR station and the large storage ice houses, the old "Horseshoe" bridge, the old Chapleau High School, the Sisters of St Mary Convent, Sacred Heart school, YMCA and annex, part of the CPR shops facing Lorne Street, the old fire hall, town hall and town garage, the Chapleau Memorial Community Arena and Lady Minto Hospital.

In the same period, between 1966 and 1978, the new physical face of Chapleau included a new hospital, separate schools, low rental housing, high school, bridge and overpass, water plant, Chapleau Recreation Centre, Chapleau Civic Centre, Cedar Grove Lodge for Senior Citizens and a new golf clubhouse as well as a new CPR station. A housing development also was well underway in the Planer Area and planning for the new bridge and road to that area started

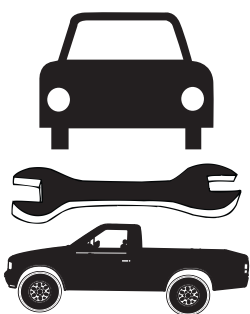
as were those for a new sewage treatment facility. The Chapleau Municipal, now Gene Bernier Airport, was in use, and by 1979, the runway had been extended.

"It is now possible to have lunch in Chapleau and dinner in downtown Toronto after a leisurely flight...", Wilf wrote.

He told his readers that "Chapleau is a friendly town. You will get a friendly 'Hi' on the Main Street from someone you never saw before. Our people are eager to help the visitor.. and the northern air and waters are yours to enjoy..."

My thanks to Joy (Evans) Heft and Michael and Alison (McMillan) McMullen for making available a copy of Wilf's profile and to Vince Crichton for the photo. My email is mj.morris@live.ca

 Ontario
Licenced
Motor Vehicle
Inspection Station



Chapleau Cree Auto/Truck
Monday - Friday
8:30 a.m - 4:30 p.m.
"Preventive Maintenance keeps you on the road"
FOX LAKE RESERVE

CALL
864-9090
for an
appointment

École Secondaire Catholique Trillium

2011

Graduation de la douzième

Les gagnants des prix et bourses et les donateurs



Première rangée: Ryen Martel, Jean-François Morin-Domingue, Sylvain Groulx, Josée Robitaille, Cailin Jones; Deuxième rangée: Mélissa Lafrance, Chantale Bergeron, Shyanne Lafrenière, Michèle Turcotte ; Troisième rangée: Marie-Eve Servent, Mélanie Dillon, Joey Demers, Joël Godbout, Jeffrey Tremblay, Katrina Fortin-Tangie, Kayla Howson, Natalie Smith, Carolyne Pilote, Kevin Paquin, Julie Robitaille, Jenny Thiffeault, Jade Goudreau, Mariane Perreault.

Graduation de la huitième



Première rangée: Emily Pilon, Brianna Fortin, Joshua Robitaille, Cassidy Fortin, Garren Landry-Marsh, Harley McWatch, Brittaney Pilon, Sarah McColeman. Deuxième rangée: Carter St-George, Josée Fortin-Deschaines, Renay Bernier, Désirée Eisner, Remington Doyon, Ashley Leach, Brandon Bernier, Céline Tessier, Brandon Fletcher-Pilote, Amy McAdam, Bradley Billings, Julie Fortin-Deschaines

Mariane Perreault: Bourse du Centre Culturel Louis-Hémon; Cailin Jones: Bourse de la Banque Royale; Julie Robitaille et Marie-Eve Servent; Bourse Houde et Perreault; Julie Robitaille: Bourse Bignucolo Inc.; Jade Goudreau: Bourse Lacroix Bus Line; Cailin Jones: Bourse des Chevaliers de Colomb; Mélissa Lafrance: Bourse Jeffrey Shearer (Dr. James Shearer); Mélissa Lafrance: Bourse UCFO; Cailin Jones; Bourse George Edward Young (Ville de Chapleau); Mélanie Dillon: Prix de la Paroisse Sacré-Coeur; Katrina Fortin-Tangie: Bourse du Conseil d'administration du Collège Boréal; Carolyne Pilote: Bourse Betty O'Shaugnessy (Northern Credit Union); Julie Robitaille: Bourse de Formation Plus; Julie Robitaille; Prix du Club Rotary; Cailin Jones: Bourse des Services de santé de Chapleau Health Services; Joey Demers: Plaque Jonathan Gionet (Cassandra Comte); Julie Robitaille: (Université), Katrina Fortin-Tangie (Collège): Bourses du Soixantième Anniversaire de l'École Secondaire Chapleau High School; Natalie Smith: Bourse du Jubilaire du Soixantième Anniversaire de l'École Secondaire Chapleau High School; Jenny Thiffeault, Josée Robitaille, Kayla Howson, Michèle Turcotte: Bourses Trillium; Kevin Paquin: Bourse commémorative Arthur J. Boucher; Marie-Eve Servent: Chapleau General Hospital Ladies Auxilliary; Shyanne Lafrenière: Bourses de la FEESO; Joey Demers: Bourse NESER Investments; Jean-François Morin-Domingue: Bourse True North Timber; Natalie Smith: Bourse Canada Brokerlink (ON) Inc.; Michèle Turcotte: Bourse et Cadeau JSAM Logging; Natalie Smith: Bourse Royal Canadian Legion; Marie-Eve Servent: Bourse Timmins & District Hospital; Katrina Fortin-Tangie: Bourse des Filles d'Isabelle; Jeffrey Tremblay: Bourse Ace Contracting; Katrina Fortin-Tangie: Bourse des dames New Horizon Rebekah's #391; Mélanie Dillon: Bourse Independent Order of Oddfellows.

CLASS OF

2011

Chapleau High School



Chapleau High School Commencement

June 29, 2011

Our congratulations and best wishes to the Graduates of 2011!

**Sabrina Black
Ron Groulx**

**Danielle Charron
Emma Hamill
Erin O'Connor**

**Mathieu Desormiers
Jaimie Lasanté
April Parron**

**Dominick Fortin
John Lee
Jessica Raposo**

**Robert Gouge
Jenna Levesque**

Governor General's Academic Medal – Emma Hamill

Lieutenant Governor of Ontario Community Volunteer Award – Emma Hamill

Ontario Scholars – Danielle Charron, Robert Gouge, Emma Hamill, Jaimie Lasanté, Jessica Raposo

Knights of Columbus Award – Jessica Raposo
Centre Culturel Louis Hémon – Sabrina Black
New Horizon Rebekah Lodge #391 – Emma Hamill
Allan Austin Memorial Scholarship – Jaimie Lasanté
Bignucolo Incorporated – Emma Hamill
Services de Santé Chapleau Health Services Bursary – Robert Gouge
Technological Studies Award – Dominick Fortin
Chapleau Rotary Club Award – Emma Hamill
George Edward Young Bursary – Emma Hamill
Colin Pellow Memorial Award – Danielle Charron
Jubilee Industry and Interest Awards – Danielle Charron & Emma Hamill
Chapleau High School Students' Council Award – Emma Hamill
The Chapleau Express Award – Emma Hamill
J & N Signs and Photography Award – Jessica Raposo
Timmins and District Hospital Bursary – Robert Gouge



Renée Cecile Memorial Award – Emma Hamill
Aux Trois Moulins Award – April Parron
Jeffrey Shearer Memorial Award – Emma Hamill
Elizabeth O'Shaughnessy Award – Emma Hamill
Northern Credit Union Award – April Parron
Royal Canadian Legion Award – Emma Hamill
Collins Home Hardware Award – April Parron
A Memorial Award – John Lee
Jubilee Scholarships, High Average
- Jaimie Lasanté & Emma Hamill
Dr. William R. Pellow Masonic Bursary – Emma Hamill
Northern College Board of Governance Award – Robert Gouge

Principal's Award For Student Leadership – Emma Hamill

Ontario Secondary School Teachers' Federation, District 2 Leadership Award – Emma Hamill

Chapleau Business Community Awards – Emma Hamill & Robert Gouge

Sponsored by: Royal Bank of Canada, Life Touch Canada, Canada Brokerlink Ontario Inc., Shannon Fuller
Chapleau News Depot and the Independent Order of the Oddfellows

L'été est arrivé — combattez la chaleur

Les chaleurs d'été s'abattent bientôt sur nous et, en prévision des températures chaudes, le Service de santé publique de Sudbury et du district encourage chacun à se

préparer à combattre la chaleur. L'exposition à la chaleur extrême peut

entraîner des états de santé graves comme un coup de chaleur et l'épuisement. Les personnes le plus à risque durant ces périodes de chaleur et d'humidité élevées sont les nourrissons, les personnes âgées, les gens qui font de l'exercice vigoureux ou exécutent des travaux durs à l'extérieur durant de longues périodes de temps, et les personnes souffrant d'une maladie chronique.

« N'importe qui peut subir une maladie causée par la chaleur », explique Allan McDougall, agent de soutien environnemental de la Division de la santé environnementale du Service de santé publique de Sudbury et du district. « Chacun devrait prendre des précautions. »

Voici quelques conseils qui vous aideront à prévenir les maladies reliées à la chaleur :

- Buvez beaucoup d'eau et de jus naturels. Évitez les breuvages contenant de l'alcool et de la caféine.
- Évitez l'exposition au soleil ou à la chaleur dans la mesure du possible.

- Gardez les lampes électriques éteintes ou à faible intensité.

- Prenez un bain ou une douche à l'eau fraîche, ou rafraîchissez-vous à l'aide de serviettes humides et fraîches.

- Portez des vêtements amples de couleurs pâles.

- Évitez les gros repas et l'utilisation du four.

- Tâchez de prendre les choses en douceur et de vous reposer autant que possible.

- Mettez un bol de glaçons devant votre ventilateur électrique. Cela produit un effet rafraîchissant.

Parmi les signes et les symptômes d'une maladie reliée à la chaleur, notons une respiration rapide, une faiblesse ou un évanouissement, une fatigue inhabituelle, un mal de tête et de la confusion mentale. Si vous ou une personne sous votre garde éprouvez l'un ou l'autre de ces symptômes, demandez de l'aide auprès d'un professionnel de la santé, d'un ami ou d'un

membre de la famille. En situation d'urgence, appelez le 911.

D'après le Plan d'intervention pour les grandes chaleurs, conçu par le Service de santé publique de Sudbury et du district (SSPSD) et la Ville du Grand Sudbury, le SSPSD distribue de l'information sur la sécurité en période de chaleurs humides. En plus de fournir ce genre d'information générale, le Service de santé publique fournit de l'information sur les façons de combattre la chaleur dans les immeubles d'appartements, sur la sécurité des animaux de compagnie, les activités extérieures dans la chaleur et le smog, et la sécurité des enfants par temps chauds.

Pour plus d'information, communiquez avec le Service de santé publique de Sudbury et du district, 705.522.9200, poste 398 ou visitez le site Web www.sdhu.com. De plus, vous pouvez visiter le site d'Environnement Canada au <http://www.ec.gc.ca>, et le site de Santé Canada au <http://www.hc-sc.gc.ca>.

Another happy winner



Toutes nos félicitations s'adressent à Lynn Turner, grande gagnante du deuxième tirage. Au nom du Club Maria Chapdelaine, Michelle Courtois était heureuse de remettre le chèque de 2000.00\$ à Lynn. Le tirage a eu lieu le mercredi 22 juin dernier au Cedar Grove.

Lynn Turner is the happy winner of Club Maria Chapdelaine's second draw. Michelle Courtois is proud to hand Lynn a cheque in the amount of 2000.00\$. This second draw was held on Wednesday, June 22nd, at the Cedar Grove.

Avoid Attracting Bears

Control garbage **Remove bird feeders** **Clean barbecues** **Pick ripe fruit**

To report a bear problem, call 1 866 514-2327. In a life-threatening emergency, call 911 or the local police.

ontario.ca/avoidbears • 1 866 514-2327 • TTY 1 705 945-7641

Paid for by the Government of Ontario

CANADA BROKERLINK
(ONTARIO) Inc.

INSURANCE

Insurance Brokers
Larry Donivan, Office Supervisor, Rosane Connelly, Account Manager, Jocelyne Gervais, Account Manager

No dot.com impersonal answers here.
Just great personal service with great rates.

We will ask all of the right questions to make sure you get the best coverage and service for your needs. Then we will shop around to get the right price.

✓ Auto ✓ Home ✓ Commercial
24 hour claim service
PH: 864-1237 FAX: 864-2715
18 Birch Street, Chapleau.
E-mail: ldonivan@brokerlink.ca

The Chapleau Child Care Centre

would like to assist you

to take care of your children while you work, attend school or enjoy that much-needed break.

We offer a variety of early learning and care programs for children from birth to twelve years of age. Services are available in French and English from 7:30 a.m. to 5:30 p.m. Monday to Friday each week. We also offer different user options, family rates and subsidy.

Stop by the Centre at 28 Golf Road or call 864-1886 for more information!!
Let us be a part of your child's learning experience!

THE LOCAL MARKET PLACE THE LOCAL MARKET PLACE

CHADWIC HOME, FAMILY RESOURCE CENTRE

Offers shelter, emotional support, and information for women and their children who are in crisis situations. We have a Toll Free Crisis Line which is staffed 24 hours a day. We can arrange for free transportation to the Centre for women who live in the Algoma/Chapleau area. We also offer support to women who live in the communities of Chapleau, White River, Dubreuilville, and Horne-payne through our Outreach Program. Our Outreach Worker travels to those communities to meet with women who need emotional support as well as information about their rights and options. If you need to speak with the Outreach Worker when she is in your community, you can call the Centre at any time to set up an appointment. You do not need to be a resident of the Centre in order to use our services. If you need someone to talk to or if you just need someone to listen, call our Toll Free Crisis line at 1-800-461-2242 or you can drop in at the Centre. We are here for you.

ALCOHOLICS ANONYMOUS Offers help to anyone who desires to stop drinking. Open discussion meeting on Sundays at 2:00 p.m. Trinity United Church basement. Telephone contacts: 864-2786

ALCOOLIQUES ANONYMES Offre de l'aide à celui ou celle qui désire arrêter de boire. Les rencontres ont lieu tous les mercredis soirs à 19h (7:00 p.m.) Au sous-sol de l'église Sacré-Coeur. Téléphonez au 864-2786

Narcotics Anonymous offers help to anyone who desires to stop using drugs. Meeting every Thursday 7:30 p.m. basement Sacred Heart Church. Telephone contact 864-2786.

Alcoholics Anonymous (A.A.) Open discussion meeting every Monday evening. Brunswick House First Nation Band office lounge 7pm. **Narcotics Anonymous(N.A.)** every Tuesday same place same time. NNADAP Worker @ 864-0174 info.

Société Alzheimer Society meetings will be held at the Chapleau Hospital every 1st Monday of each month starting from 7:00 p.m. to 9:00 p.m.

APARTMENTS FOR RENT

Large 2 bedroom apartments, balcony river view, fridge, stove, washer, dryer, partly or fully furnished, including T.V. Satellite. Private car parking and storage garage. Call or leave a message at 705-864-9075. Jun25

2 bedroom apts available. First and last required. Call and leave message. 705-864-2282. cont'd

Village Shop Apartments Live in a quiet, clean, secured building. Laundry facilities in bldg. Apts. are 2 & 3 bedroom. Applications with references are now being accepted at Chapleau Village Shops at 8 Birch St. E.

Kahnawake Cabins is located minutes from town and has fully furnished bachelor apartments available immediately. Heat, hydro and cable is included. \$460/month. Laundry facilities onsite. Call 705 864-1401 cont'd

12 Mulligan's Bay Rd. Waterfront winterized cottage. 21x48' on lot 55,56,57. In ground pool, sauna, gazebo, dock, greenhouse with or without detached garage on separate lot#54. Call 705-526-0421.

FOR SALE

3 Bedroom house. Fridge and stove. 334 Highway 129., \$520.00 month. Call 705-864-1401.

FOR SALE

Invacare "Meteor" mobility scooter. New summer 2010. Hardly used-approx.10km. Selling due to declining health. Retail for over \$3000.00. Asking \$1,500. Call Jack at 705-864-1821. Jul16

Used boats and motors. 14ft boats \$300 and \$400. 4 - 2hp Evinrude motors \$200 ea. 1-6 hp Johnson \$200. 1-8 hp Suzuki Motor \$400.1- 15 hp Suzuki motor \$300. Call Paquette's Camp 705-987-6341 ask for Lewis.

Westbury pro-cussion drum set.\$300. Call Vicki at 705-864-1027.

HOUSE FOR SALE

Duplex income property at 23 Grey St. South. Lower level has 3 bedrooms, 1 bath and unfinished basement. Upper level has 2 bedrooms, 1 bath. Wood/electric heat. Many renovations. Call 705-864-0499. July23

VACATION BIBLE SCHOOL

VACATION BIBLE SCHOOL at Pentecostal Church. Aug. 1-5, 9:30-12 Noon. More info: Pastor Dan. 705-864-0828

chapleauexpress.ca



Help keep our community clean!

GEORGIAN BAY SOLAR AND WIND

Renewable Energy Systems
Sales, service and installation
Serving all of Northern Ontario

georgianbaysolarandwind@yahoo.ca
Phone: 705 688-4530

TIMMINS NISSAN

Large Used Inventory **Derek Bouchard** Sales Representative Large New Inventory

1180 Riverside Drive, Timmins, ON P4R 1A4
Tel. 705-268-2226 Fax 705-264-2735
Toll Free 1-877-419-9984
E-Mail: derek_nissan@live.ca

Peak Roofing

Shingle specialist
Re-roofing, new construction, repairs
call Nathan Jansen at
705-864-2602
nj.peakroofing@gmail.com

FLOOD'S STRAWBERRIES

"Pick Your Own or Already Picked"

Open 8 a.m.

Take Hwy. 129 to Little Rapids Road. (3 miles before Hwy. 17)
Take Collver Road for one mile
If you're picking, bring your own containers or buy them on location.

FOR PICKING CONDITIONS OR FOR AN ORDER, CALL
1-705-842-3925

NEW AT THE CHAPLEAU PUBLIC LIBRARY

REMINDER
The TD Reading Club has begun July 4th, and will continue to September 2nd, 2011.
The Summer Story Hour will begin Wednesday, July 13th, at 2 p.m. and continue each Wednesday until August 17th. Register at the Library or call 705-864-0852 for more info.

NEW BOOKS
Please Look After Mom - Kyung-Sook Shin
Crunch Time - Diane Mott Davidson
Belle - Lesley Pearse

BERRY'S FREIGHT SERVICES

TIMMINS - CHAPLEAU - TIMMINS

MONDAY TO FRIDAY
1lb. to 10,000 lbs.

FOR QUALITY SERVICES AT INEXPENSIVE PRICES GIVE US A CALL AT
1-705-264-4334

SLOMA CLEANERS

Drop off at Between Friends (Cedar Grove)
Mon to. Fri. 8 am-noon and 1-4 pm

ALL ADS ARE ACCEPTED AT DENISE'S FLOWER SHOP

DEADLINE FOR RECEIVING ADS IS WEDNESDAY 4:00 p.m.

CLASSIFIED ADVERTISING RATES

Regular Classified Ads
First 25 words or less \$6.25
Each additional word \$0.16+GST

No refunds on cancelled classified ads.

Dr. L. R. Simpson VETERINARIAN

Will be at the Trinity United Church
Monday, July 18th, 2011
FOR APPOINTMENTS CALL
Nadene McEachren at 864-1055
lrs.vet@gmail.com

Alain Bouffard Sales Representative

61 Mission Road
Wawa, Ontario, P0S 1K0
Tel: 705-856-2394
Fax: 705-856-4290
alainbouffard@missionmotors.com

NEW & PRE OWNED VEHICLE SALES
GOODWITCH SERVICE CENTER
24hr TOWING

PONTIAC, GM, GMC, CHEVROLET

ALLEMANO & FITZGERALD

Barristers and Solicitors

MICHAEL G. ALLEMANO, B.A., L.L.B.
Certified by the Law Society as a Specialist in Real Estate Law

P.O. Box 10, 369 Queen St. E. Suite 103, Sault Ste. Marie, Ontario P6A 1Z4
Phone (705) 942-0142 Fax (705) 942-7188

P.O. Box 1700, 55 Broadway Avenue, Wawa, Ontario P0S 1K0
Phone (705) 856-4970 Fax (705) 856-2713

Northern Lights Ford Sales

Andrew G. McKenzie
11 Years of Service

Highway 17, North
P.O. Box 1033
Wawa ON. P0S 1K0
Bus: 705.856.2775
Fax: 705.856.4862
sales@northernlightsford.ca

BODYLINES BY CRACK LTD.

-5 Licensed Bodymen
-Insurance Claims
-Windshield Repairs and Replacement
-State of the Art Frame Machine

ALL WORK GUARANTEED
PLEASE CALL 705-856-1406

LVP LABERGE VENNE & PARTNERS
PROFESSIONAL CORPORATION
CHARTERED ACCOUNTANTS and CONSULTANTS
COMPTABLES AGRÉÉS et CONSULTANTS

Professional Services to Northern Ontario for 25 years

Financial Statements for Small Business & Corporations
Tax Returns - Personal, Corporate and Trust/Estate
Personal, Retirement, Estate Financial and Tax
Planning Strategies
Business Projections, Plans and Financial Proposals
Computer Consulting
ACCPAC and Quickbooks

1970 Paris Street, Sudbury, Ontario P3E 3C8
(705) 523.0272 (800) 581.7510 www.lvppartners.ca

LVP LABERGE VENNE & PARTNERS
PROFESSIONAL CORPORATION
CHARTERED ACCOUNTANTS and CONSULTANTS
COMPTABLES AGRÉÉS et CONSULTANTS

25 ans de service professionnels pour les entreprises du Nord de l'Ontario

États financiers pour petites et moyennes entreprises et corporations
Rapports d'impôts personnel, de compagnie et de fiducie
Planification financière et fiscale personnelle et de compagnie
Projections financières, plans d'affaires et propositions de financement
Consultation en informatique
ACCPAC et Quickbooks

1970 rue Paris, Sudbury, Ontario P3E 3C8
(705) 523.0272 (800) 581.7510 www.lvppartners.ca

Cut & Split Birch Firewood



Purchase Options

1. Pick Up and Load Yourself.
2. Purchase and We'll Deliver.
3. Pay by Monthly Installments



Orders Accepted Now

\$75.00 / face cord

Call 705.864.2000

Ask for Wade or Kevin

Introductory Special

Free delivery in the Chapleau Area with Minimum 3 face cord purchases



Also available Lumber, timbers, decking, fencing and cedar chips

Retail Hours 1:00 pm to 4:00 pm, Monday thru Thursdays. 303 Martel Road

Send Kim to Costa Mesa



Kim Caby, who has lived in Chapleau for the past 25 years, was diagnosed with Multiple Sclerosis in 2003. She has lost over 50% of her mobility and is declining rapidly. A group of friends and

family are wanting to help Kim by raising \$15,000. to get her to Costa Mesa, California for a CCSVI (liberation) procedure. This procedure could potentially alleviate symptoms and stop progression. Rita McKee-Gavan who has seen great improvement through this procedure recommends anyone with MS to have this done before more damage occurs. We are asking you, the community, to support the fundraisers over the next two months to

help get Kim to Costa Mesa.

Here's how to help:

-July 23rd Spaghetti Supper by donation at the Legion sponsored by the Fire Dept.

-August 13th Benefit Dance at Aux Toix Moulin

-August 20th Auction - Donation of good items (excluding clothing) accepted. Drop off details to be announced.

-Donations at Northern Credit Union under "CCSVI Fund"

-Volunteer time to help with these events

For more information about the ccsvi procedure, contact Rita at 705-864-2370 or rita-gavan@hotmail.com

**CLASSIFIED
ADS
WORK**

Notice



PUBLIC APPOINTEE TO STANDING COMMITTEE OF THE TOWNSHIP OF CHAPLEAU

The Council of the Township of Chapleau is seeking residents/ratepayers to fill the volunteer positions of Committee Members for the following Standing Committee:

Public Works Committee: 2

These positions will afford individuals a special opportunity to learn about and work with Committee issues. You should be able to devote a minimum of two hours per month to the position. Committee Member roles and responsibilities are available upon request.

Appointments are for a term of 2 years, renewable up to a maximum of six years in total. Candidates must be residents/ratepayers of Chapleau.

Interested persons are asked to submit a letter of application along with a resume outlining their interests and experience to:

Township of Chapleau
Mr. Allan Pellow
CAO/AMCT
P.O. Box 129
Chapleau, Ontario
P0M 1K0
apellow@township.chapleau.on.ca

Deadline for applications is August 4th, 2011

Recherchés

CITOYENS SIÉGEANT SUR LES COMITÉS PERMANENTS DE LA MUNICIPALITÉ

On invite les citoyens intéressés à se présenter pour siéger bénévolement sur les comités permanents suivants :

Comité des Travaux publics : 2

Comme membre, vous serez en mesure de prendre connaissance et d'œuvrer sur les questions qui touchent votre comité. Vous devez être disposés à donner au moins 2 heures de votre temps à toutes les deux semaines. Les fonctions de chaque poste sont disponibles sur demande.

Votre mandat sera d'une durée de 2 ans et peut être renouvelé pour un maximum de 6 ans. Les candidats doivent être des résidents/contribuables de Chapleau.

Toute personne intéressée peut soumettre sa demande à l'adresse suivante, accompagnée d'un curriculum vitae énonçant ses intérêts et son expérience:

Township of Chapleau
Mr. Allan Pellow
CAO/AMCT
P.O. Box 129
Chapleau, Ontario
P0M 1K0
apellow@township.chapleau.on.ca

Prière de soumettre sa candidature au plus tard le 4 août à 16h.

Wilson GM
Canada
CHEVROLET BUICK GMC

We currently have a great employment opportunity at our Dealership for a

Sales Consultant

If you are a motivated team player and are looking for an exciting place to work; forward your resume to:

Mike Wilson
mike@wilsonchevrolet.ca
Wilson Chevrolet Buick GMC
100 Wilson Avenue - Box 100
New Liskeard, Ontario
P0J 1P0
Fax: 1-705-647-3062

What Have You Learned Today?

FREE Adult Learning 864-2323

Funded by the Government of Ontario EMPLOYMENT ONTARIO

Chapleau LEARNING CENTRE

Reading Business Math
Word Chemistry Excel
Goal Setting Keyboarding
Health Math Writing
Biology GED Preparation
PowerPoint Email