

Talk about good coffee!

Miss Muggins  
Coffee and  
Fresh Donuts

# CHAPLEAU EXPRESS

Vol. 13, Issue 45, July 25, 2009

PIZZA HUT & KFC  
There's a Reason  
We're Number 1  
"0 TRANS FAT"  
864-0911



## Mine builder Alan Hawke dies at age 63



Shown above is Alan Hawke on the left with friend Drew Currah at the Sarissa property on Lake Nemegosenda this past winter.

has worked on significant mineral developments and published a number of geological papers.

Born in Auckland, New Zealand in 1946, Hawke obtained a Master's degree with honours in Geology in 1977 from Auckland University.

Throughout his career he worked and consulted with numerous companies including PT Senong Corporindo, Meekatharra Minerals, PT. Sasura Cahaya Anugrah, PT Newmont Minahasa Raya, PT Kelian Equatorial Mining (CRA-Rio Tinto Group), as well as

being a director and officer of Atapa Minerals Limited, and Sarissa Resources Inc.

His work included directing all exploration activities within a 1000 square kilometer Contract of Work for PT Kelian, including regional and detailed site exploration. This work led to the definition drillout and resource studies that identified the Kelian Gold Mine, that produced some 15 tonnes of gold per year. His final project included the drilling and exploration of Sarissa's Nemegosenda niobium project which has blocked out a resource of 11 million

tonnes of 0.46% Nb<sub>2</sub>O<sub>5</sub>, and opened up a huge swath of potential in a new area of the properties.

Under his vigorous and hands-on style of exploration, mineral properties easily yielded their secrets. Always physically active, he captained the Sarissa exploration team and, in defiance of his illness, he opened up the vast potential at Nemegosenda. His brilliance, vitality, enthusiasm and firm faith in opportunity will be sorely missed.

Although respected for his impressive chronicle of achievements, he will

also be remembered with affection for the keen interest he took in the careers and lives of friends, associates and employees.

Alan grew up in a small town in New Zealand. He loved Chapleau for its beauty but even more, Alan loved the people of Chapleau. Alan called Chapleau home.

Alan is survived by his 2 children, Philip and Elana, and their mother, Michele.

Sarissa would like to thank Paul Martysz and Patti Roy, Ryan Bignucolo and Paul Muise for their support following Alan's tragic demise.

With the passing of Alan Hawke on July 21, 2009, the international mining industry lost a distinguished mine finder.

Best known for development of the Kelian gold mine on Kalimantan in Indonesia, Hawke died at his Chapleau, Ontario exploration residence. He was 63 years old.

As an eminent mine finder, pioneer and scientist, Hawke's

claim to mining immortality is assured. Throughout his long and illustrious career he

## Lake Superior Day

As the fall session of the legislature wound down just before Christmas, I had my ballot opportunity to put before the house my private members resolution to have the third Sunday in July named Lake Superior Day. I had prepared this resolution so that Ontario could join Michigan, Wisconsin, and Minnesota in recognizing the largest of the Great Lakes.

I have come to know the coast of Lake Superior quite well over the last ten years as I have gone about

my constituency work taking me north from Sault Ste. Marie almost to Marathon along Highway 17. I have in my capacities at the Ministry of Natural Resources and at Northern Development and Mines, had many opportunities to travel and explore the rest of the Canadian shore of Lake Superior.

Lake Superior is the largest body of fresh water in the world by surface area. It contains about ten percent of the world's fresh water and contains more water

than the rest of the Great Lakes combined. It is 257 km. wide and 563 km. long with an average depth of 147 metres with a volume of water of 12,100 cubic kilometres.

Lake Superior boasts scenery next to none in the world. Last week, in doing a story on the resolution, Toronto Star columnist, Jim Coyle, quoted a member of Sandford Fleming's 1872 expedition across Canada. The adventurer wrote "Those who have never seen Superior

get an inadequate, even inaccurate, idea by hearing it spoken of as a lake. Superior is a sea. It breeds storms and rain and fog like a sea.....It is cold, wild, masterful and dreaded."

It was my hope that by presenting the resolution I would encourage the people of the province and indeed, elsewhere, to visit the lake. Enjoy a circle tour. Remember that the Lake has been an important transportation link for centuries. Remember our need to protect this great resource. And

remember our responsibility to develop the communities around this great resource in a responsible and progressive manner.

The legislature passed the motion unanimously. To quote Jim Coyle, "A trip around Lake Superior might not prompt one to believe in God. But it would leave the traveller with no small reverence for the forces of creation."

For further information, please contact the Constituency Office of Mike Brown, MPP, Algoma-Manitoulin, at 1-800-831-1899 or mbrown.mpp.co@liberal.ola.org

Long Term Forecast	
<b>Saturday</b> High 18 Low 14	
<b>Sunday</b> High 17 Low 15	
<b>Monday</b> High 19 Low 14	
<b>Tuesday</b> High 19 Low 12	
<b>Wednesday</b> High 21 Low 9	
<b>Thursday</b> High 20 Low 9	



### NORTHERN HAUL CONTRACTING

**SUMMER HEAT GETTING YOU DOWN?  
NEED SOME COOLING OFF?**

**BRING YOUR VEHICLE OR HEAVY EQUIPMENT IN  
FOR AIR CONDITIONING SERVICE**

**PLEASE CALL 705-864-1095  
TO BOOK AN APPOINTMENT**

**VISIT OUR WEBSITE [WWW.NORTHERNHAUL.COM](http://WWW.NORTHERNHAUL.COM) FOR A COMPLETE LIST OF OUR SERVICES.**

In-Field service  
also available!

**Thank you Note:**

The Boucher family would like to take the time to thank everyone who participated in taking care of our sister Winnifred R. Boucher who passed away on June 29th, 2009 at Chapleau Health Services.

A special thanks to the staff and nurses and doctors who cared for Winnie. A special thanks also to Mr. P.M. Gilmartin's funeral home for being so kind and helpful.

*Thank You All*

*Sincerely  
Theresa, Grace &  
Sister-In-Law Irene*

August 3rd - 7th, 2009  
**VACATION BIBLE SCHOOL**

Ages: 4-11

**To be held at:**

Chapleau Pentecostal Church  
9 Elm Street  
Chapleau, ON

Time: 9:30 a.m. - 12:00 p.m.

Cost: **FREE**

For more information, please call:  
705-864-0828

**SUBSCRIPTION  
GIFT CERTIFICATES  
AVAILABLE**

**Subscriptions to the  
CHAPLEAU EXPRESS  
make great gifts!**

**Call 705-864-2579  
or email chaexpress@sympatico.ca  
for details**



**Angelo Bucciarelli**- Financial Security Advisor  
will be in Chapleau Thursday, July 30th to August 4th.

**Wealth Creation**  
Retirement Planning  
Investment Planning

**Wealth Protection**  
Life Insurance Planning  
Living Benefits  
Estate Organization

By appointment

**1-519-852-7676**

**Email:** angelo.bucciarelli@freedom55financial.com  
**Website:** www.angelobucciarelli.com

The Terry Fox Run Organization is looking for a volunteer to coordinate the run in Chapleau. The run day is Sunday September 13, 2009.

Please contact Kim Smith at 1-888-836-9786 ext 227 if you are able to assist.  
Thank You

**OBITUARY  
Hong, Frances**



At the Chapleau Health Centre on Thursday July 16, 2009. Frances, beloved wife of Yen, Loving mother of Helen (Mike Hood), of Singapore, Heather Hong of Toronto, Billy Hong of

Toronto and Kim (Dale Roberts) of Thunder Bay. Loved by her grandchildren Nicholas, Cameron, Jessica. Mathew, Elyssa and her great-grandson Anthony. Dear sister of Bob Burgess, Jacqueline Montambeault, Claudette Barri, Diane Ramsawak and the late Ronald Burgess. A Memorial Service was held at Trinity United Church on Monday July 27, 2009. For those who wish, memorial donations to the Activation Unit at the Chapleau Hospital or the Trinity United Church would be appreciated by the family.

**CONGRATULATIONS**



Dorothy and Maurice are proud to announce the graduation fo their daughter Ashley. She has graduated from Cambrian College in the Business Administration Program.

Great Job Ashley. We Love you  
**Mom, Dad and Katie  
(Spike, Rocky, Misty, Casey)**

**Classified ads  
WORK**

**The Chapleau Express**

P.O. Box 457  
Chapleau (Ont.) P0M 1K0  
Telephone - Fax : 705-864-2579  
e-mail : chaexpress@sympatico.ca

**Published every Saturday/Sunday**

**Deadline for receiving ads is Wednesday at 4 p.m.**  
The Chapleau Express is delivered free of charge to every household each Saturday. If you have any comments, please feel free to contact us. Subscriptions: **\$75.00 per year (Canada) \$150.00 U.S per year (U.S.A)** Canadian Publications Products Sales Agreement #30183799

**Ads and advertisements can be dropped off at the  
Chapleau Innovation Centre  
Monday to Friday  
9:00 a.m. to 4:00 p.m.**

**GOING TO CHURCH**

Catholic Church  
**SACRED-HEART OF JESUS  
PARISH  
PAROISSE SACRÉ-COEUR  
DE JÉSUS**

26 Lorne Street North  
OFFICE- 21 Lansdowne St.N.  
864-0747

Sunday/dimanche  
9:30 a.m. English  
11:00 a.m. Francais  
Weekdays Mon-Sat  
en semaine Lun-Sam  
**Fr. Jacques Fortin**

**ST. JEAN DE BRÉBEUF  
(Sultan)**

Liturgy of the Word  
Liturgie de la parole Every 3rd  
Saturday 7 p.m. Bilingual  
Tous les 3e samedis 19h  
Bilingue  
Permanent Deacon Ted  
Castilloux

Diocese of Moosonee  
**Anglican Church of Canada  
ST. JOHN'S CHURCH**

4 Pine Street West  
864-1604  
Sunday Service  
10:30 a.m.  
Rev. Bruce Roberts

**ST. MARY'S ANGLICAN  
CATHOLIC CHURCH**

78 Devonshire Street  
864-0909  
Sunday Service 10 a.m.  
Rev. William P. Ivey

**CHAPLEAU PENTECOSTAL  
CHURCH**

9 Elm Street (P.A.O.C.)  
864-0828  
July 5th- Sept.6th  
Sunday A.M. Services  
10:30 ONLY  
Pastor Lynn Merriam  
(Summer Pastor)

**TRINITY UNITED CHURCH**

Corner of Beech and Lorne  
864-1221 Sunday Service and  
Sunday School 11:00 a.m.  
Anna Chikoski  
Soup Kettle every 2nd Wednesday  
of the month  
www.angelfire.com/on/trinityuc

**OUR LADY OF SEVEN  
SORROWS PARISH  
PAROISSE NOTRE-DAME-  
DES-SEPT-DOULEURS  
(Foleyet)**

Liturgy of the World Sundays  
11 a.m.  
Liturgie de la Parole  
Dimanche 11h  
Mass every 2nd & 4th Sunday  
at 4:00 p.m.  
Messe sux 2e et 4e dimanche  
à 16h

**COMMUNITY BIBLE CHAPEL**  
Corner of King and Maple  
864-0470

Communion Service 9:30  
Family Bible Hour 11 a.m.  
Including Sunday School  
Evening Bible Study and  
Ladies Bible Study  
during the week  
Transportation available  
Al Tremblay

**Announcement**

After long serious thought and with mixed emotion, we announce that the time has come for us to turn over the management of our Funeral Home and to retire from full time funeral service activities. As of August 1st, 2009, the operation of P.M. Gilmartin Funeral Home Ltd. will be under the direction of Valerie Fahrer and her husband Tom.

Valerie brings with her many years experience as a licensed Funeral Director working in the Sault Ste. Marie Area. We have personally known Val for most her career and find her to be a competent and caring funeral director. We feel very comfortable with Valerie taking over, as we know that the funeral needs of families will be well cared for. All aspects of the funeral home operations will remain the same under Valerie's direction.

We would like to thank the various people, organizations and institutions who have so graciously assisted us over the years. The Clergy, The Townships of Wawa, Chapleau, Dubreuilville, White River, Manitouswadge, the Cemetery Personnel, the Health Care Professionals, the Volunteer Fire Departments, the Wawa Police Service, the Ontario Provincial Police, our part time help, both past and present and the many others over the years. Your assistance helped us tremendously, Thank You!

We would most of all like to express our sincere appreciation to families that have placed their trust and confidence with us over the years, it truly has been a privilege to have been of service to you and we hope in some small way we helped ease your overwhelming burden.

Ann Marie, Bryan and I will cherish the many friendships we have made along the way and now look forward to a new chapter in our lives.

*Sincerely  
The Gilmartin's*



# Public reminded to report bears shot in defence of property *Failure To Do So Is A Violation*



The Ministry of Natural Resources reminds you that under the Fish and Wildlife Conservation Act, you are required to immediately report any bears that are killed in defense of property to your local ministry office either in person or by telephone. Failure to do so is a violation under the act.

You are also reminded that killing a

bear should be a last resort, and only after exhausting all other options available to you. Preventing a problem from starting in the first place by controlling and removing things that are known to attract bears is the best way to avoid human-bear problems. Garbage, bird food including suet, seed and nectar, pet food, odours from barbecues and ripe

fruit left on trees and on the ground are among items that can attract bears to your property and into your neighbourhood.

While the act does give landowners the right to kill a bear in defence of property, you must ensure that it is done swiftly, humanely, and safely in accordance with local by-laws that cover the discharge of firearms. The ministry strongly recommends that only an experienced hunter or trapper dispatch a black bear.

If you have done everything you can to remove attractants, and the bear persists, call 1-866-514-2327, Hearing Impaired (TTY) 1-705-945-7641, to report the

problem.

You can call the Ministry of Natural Resources Bear Wise reporting line toll-free at 1-866-514-2327. You will be connected directly with a live operator during bear season.


In a life threatening emergency, call 911 or your local police.

Report a natural resources violation by calling 1-877-TIPS-MNR (847-7667) toll-free any time or contact your

local ministry office during regular hours.

You can also call Crime Stoppers at 1-800-222-TIPS (8477).

For more information on bears, visit [ontario.ca/bearwise](http://ontario.ca/bearwise).



**WEDNESDAY**  
**July 29-2009 at 7 p.m**  
**at the**  
**LEGION HALL,**  
**Chapleau Ontario.**

A special Presentation will be given by Dr. and Masonic Brother Vincent Crichton PhD. Certified Biologist. Dr. Crichton was head of all wild game management and research for the Province of Manitoba and recently was invited to be a guest in Russia to talk on large game in the north of Canada and Russia. There will be a volunteer collection for the CHS Masonic Bursary Fund. Dr. Crichton was born in Chapleau and his acclaim to prominence in his field of animal expertise is stellar, especially in large animal research and management. Light refreshments will be served after the presentation. This presentation is sponsored by the Chapleau High School Masonic Bursary.

### Thank you for 'growing' with us!

During the month of June, the Chapleau General Hospital launched its "Come grow with us!" campaign. We would like to thank everyone that showed their support during this campaign by purchasing a card for \$2. We raised a total of \$1015 to support the current medical equipment campaign. A special thank you to the following locations that assisted with this campaign by selling cards on our behalf: Home Furniture, Chapleau News Depot, The Royal Bank of Canada, Chapleau Valu-Mart, Gus's Restaurant, Hongr's Bar and Grill, Chapleau Village Shops, Canada Brokerlink, Model Drug Store, Aux Trois Moulins Restaurant, Goffer Coffee, Snip & Style, Home Hardware Building Centre, Miss Muggins, LCBO, Napa Auto Parts, 101 Gas Bar, Pimii Kamik Gas Bar and Gift Shop, Northern Credit Union, Between Friends Coffee Shop, Blue Heron Inn, Chapleau General Hospital and Activation Department and the Chapleau Medical Centre. This campaign could not have been as successful without your help.

The Foundation held its first BBQ to raise additional funds for the "Come grow with us!" campaign on the 26th of June. A generous crowd attended the BBQ and were greeted by our Foundation Board Members that served them food and drinks. Our BBQ raised a total of \$688.90 to place the amount raised from this campaign at \$1703.90. A special thank you is extended to Pepsi, ACE Contracting, The Oddfellows, Chapleau Valu-Mart, the Activation Department and to the Arena for their donations and/or contributions to our BBQ.

**\*\*\* Join us for our 1st Annual Golf Classic Tournament on Saturday August 29, 2009.**  
2 - Hole in One prizes for \$3500 - \$250 / foursome - Sponsorship Opportunities - See advertisement for locations where brochures are available \*\*\*

### Ensemble pour un avenir prometteur!

En juin, l'Hôpital Général de Chapleau a lancé sa campagne Un avenir prometteur chez nous! Nous remercions toutes les personnes qui ont manifesté leur appui en achetant une carte pour 2 \$. Nous avons ainsi recueilli 1 015 \$ afin d'appuyer la campagne d'achat d'équipement médical en cours. Merci tout particulièrement aux commerces et organismes suivants qui nous aidés à vendre des cartes en notre nom : Home Furniture, Chapleau News Depot, Banque Royale du Canada, Chapleau Valu-Mart, Gus's Restaurant, Hongr's Bar and Grill, Chapleau Village Shops, Canada Brokerlink, Model Drug Store, restaurant Aux Trois Moulins, Goffer Coffee, Snip & Style, Home Hardware Building Centre, Miss Muggins, LCBO, Napa Auto Parts, 101 Gas Bar, Pimii Kamik Gas Bar and Gift Shop, Northern Credit Union, Between Friends Coffee Shop, Blue Heron Inn, Hôpital Général de Chapleau, Service d'animation et Centre médical de Chapleau. La campagne n'aurait pas connu un tel succès sans eux.

Le 26 juin, la Fondation a tenu son premier barbecue de financement dans le cadre de la même campagne. Les gens y ont été accueillis par les membres du Conseil d'administration de la Fondation, qui leur ont servi des boissons et des aliments. Grâce à leur générosité, on a amassé 688,90 \$, ce qui a fait passer le total à ce jour de la campagne à 1 703,90 \$. Nous remercions surtout Pepsi, ACE Contracting, Oddfellows, Chapleau Valu-Mart, le Service d'animation et l'aréna de leurs dons et contributions au barbecue.

**\*\*\* Soyez des nôtres lors du 1er tournoi de golf annuel, le samedi 29 août 2009.**  
2 prix pour un trou d'un coup : 3 500 \$. Inscription d'une équipe de 4 personnes : 250 \$. Possibilités de commandite – Pour connaître l'emplacement, consulter la publicité, là où il y a des dépliants. \*\*\*



Chapleau General Hospital Foundation  
Fondation de l'Hôpital Général de Chapleau



**Ontario**  
Licenced  
Motor Vehicle  
Inspection Station



## Chapleau Cree Auto/Truck

**Monday - Friday**  
**8:30 a.m - 4:30 p.m.**  
"Preventive Maintenance keeps you on the road"  
**FOX LAKE RESERVE**

**CALL**  
**864-9090**  
for an  
appointment



# Chapleau Moments

by Micheal J. Morris



Tom Welch, the publisher of The Chapleau Sentinel noted in a headline on July 5, 1976 that more than one thousand former Chapleauites had returned home the previous week to help celebrate the 75th anniversary of the incorporation of Chapleau as a municipality, adding that each event was filled to capacity.

They came from Newfoundland to British Columbia and from the United States 'in overselling numbers' the article said, and Chapleau welcomed them opening the doors of homes, their cottages, their facilities -- demonstrating that this community is the friendliest town in the north -- and that we know how to have a good time.

We sure do!

Since the 75th anniversary there have been two highly successful high school reunions, the 100th anniversary of Chapleau in 2001 and numerous sports weekends, festivals and carnivals over the years.

It was obvious from the opening festivities at the Chapleau beach area that everyone was ready for a good time as large crowd was on hand for it and the arrival of the canoe flotilla. Among those participating were Councillors G. E. Young, Ernie Gilbert, Walter Wilson and George Evans, former reeve Arthur Grout, and former councillors Ovide Cote, Alfred Leclair, Cap Campbell and Marcel Bourgeault. I was safely secure on the floor of a canoe

paddled by Ernie Gilbert and Marcel Bourgeault.

The official speeches were made, the town band played and the birthday party - likely the largest celebration to that time in Chapleau's history was underway.

The star of the first day had to be by unanimous vote Dr. G.E. 'Ted' Young who had agreed to act as master of ceremonies for a good old-fashioned homecoming party in the huge circus tent which had been placed on the old Chapleau high School site. The school had been demolished to make way for the Chapleau Civic Centre, opened in 1978.

The Sentinel noted that Dr. Ted kept the capacity crowd in the tent entertained and called upon many he saw in the crowd to give him a hand. Arthur Grout, Bill Ritchie, Oliver Korpela, Harry Pellow, Mike Mione and Robert Lafreniere were some who helped while a gang of former Chapleauites led a

rousing sing song to end the afternoon's party.

Dances in the Chapleau Memorial Community Arena were of course a happening in themselves and were packed to capacity. Everyone was in a party mood.

The 75th Anniversary Parade organized by Norm Allan was another major attraction of the weekend. Led by Sgt. at Arms Adam Andrews and the Colour Party of Branch 5 of the Royal Canadian Legion, and the Town Band, many of the floats were historical in nature.

First prize went to Stedmans store for its float depicting the first church meeting in the community in its early years. The minister with his broad hat and robes and congregation in their old-fashioned dress caught the eye of the judges. (If anyone recalls who was on the float please let me know.)

A special guest for the parade was the Hon. Rene Brunelle, Chairman of the Cabinet of the Province of Ontario, and member of the Provincial Parliament for Cochrane. Mr. Brunelle, a great friend of Chapleau, was in town to participate in the ground breaking ceremonies for Cedar Grove Lodge for Senior Citizens on the site of the old Sacred Heart School. It was opened in 1978.

Mrs. Dorleen Collings was in charge of all the anniversary food concessions and

as always did a totally remarkable job assisted by many community groups.

As an aside Mr. Brunelle defeated me by one half second in a spike driving competition to launch all those activities at the beach area and ball field.

The Old Home Week came to an end on Sunday evening at the tent with an Eventide Ecumenical Service. The tent was full as was the entire beach area with people who had come together for a weekend to share in a great Chapleau moment. Rev. Lucien Bouillon, a Roman Catholic Priest and Rev. Thomas Corston, an Anglican priest, both Chapleau boys participated. Rev. William Ivey of St. John's Anglican Church, Rev L Dube and Rev DO'Rourke of Sacred Heart Roman Catholic Parish and Rev. D. Mclean of Trinity United Church officiated.

The lovely voices of the Chapleau Community Choir under the direction of Mrs. Boyd Beacock accompanied at the

piano by Mrs. Lauretta Veit added immensely to the service by the river.

I remember vividly walking from the tent location to the beach area at the conclusion of the service with my Executive Assistant Eileen McRea, now Zajac, going over the weekend and thanking her for all she had done to make it a success. Eileen was the coordinator of the weekend.

To me celebrations such as these bind us more closely together as people and a community and when we focus on those things that bring us together rather than those that divide us, we can face the challenges and meet them, one day at a time.

Maybe it is time for another great Chapleau celebration. Let me know at [mj.morris@live.ca](mailto:mj.morris@live.ca)

The Terry Fox Run Organization is looking for a volunteer to coordinate the run in Chapleau. The run day is Sunday September 13, 2009. Please contact Kim Smith at 1-888-836-9786 ext 227 if you are able to assist. Thank You

## 1st CHAPLEAU GENERAL HOSPITAL FOUNDATION ANNUAL GOLF CLASSIC 2009

**in Partnership with**

- Cash Prizes & Awards
- 2 x \$3500 Hole in One
- Team Photos
- Giveaways
- Dinner
- \$250/Foursome

Chapleau General Hospital Foundation  
Fondation de l'Hôpital Général de Chapleau

**Saturday, August 29th, 2009**  
**Kebsquasheshing Golf Club, Chapleau**

Registration forms available at: Royal Bank of Canada, Kebsquasheshing Golf Club and the Chapleau Medical Centre.  
For more event information and sponsorship opportunities contact Allison Murphy 705-864-2568 ext 33.

### Student Employment Opportunity

#### Kebsquasheshing Golf Club

The Kebsquasheshing Golf Club is presently looking to fill one student vacancy for the 2009 golf season as a Clubhouse attendant

The individual must be 18 years of age or older and possess a Valid SMART SERVE certificate. The individual must be self-motivated and enjoy working with people.

Please apply in person at the golf course between 8 am and 4 pm

## Le Centre De Garde De Chapleau

**veux vous assister à prendre soins de vos enfants pendant que vous êtes au travail, à l'école ou simplement pour prendre une petite pause.**

Nous offrons une variété de programme d'apprentissage et de garde pour les enfants de 18 mois jusqu'à 12 ans.

Les services sont disponible en français de 7h 30 à 17h 30 du lundi au vendredi.

Nous offrons différents options d'utilisateur, des tarifs de famille et des subventions.

**Passez nous visiter au 28 rue golf ou composez le 864-1886 pour plus d'information.**

**Laissez nous faire parti de l'expérience d'apprentissage de votre enfant!**



# Invasive Species

By Steve Memegos



This week in my article I will be telling you about The Spiny Water Flea. I will be monitoring for this Invasive species around the lakes in Chapleau.

**Description:**

The Spiny Water Flea is a predatory cladoceran that collects in jelly-like masses on fishing lines, downrigger cables, or nets. They may appear as clusters of tiny pins with black dots.

**Body Features:**

They have a dark eye spot, a balloon-like egg pouch and a tail that can be straight or slightly angled.

**Distribution:**

The Spiny Water Flea first came to North America in the ballast water of Eurasian ships. Spiny Water Fleas was first discovered in 1982 in Lake Ontario, by 1987 it had spread to all of the great lakes. It has made its way to Northern Ontario possibly by anglers or recreation boaters that unknowingly spread it.

**Impacts:**

Spiny Water Flea feeds on zooplankton, when there is an abundance of Spiny Water Flea the consumption of zooplankton can be significant. Fish will feed on Spiny Water Flea and it will get caught in fish's throat and will be literally coughed out. Scientists today have not seen a decline of small due to them eating Spiny Water Flea and competition for food with it. However in time the possibility of an impact of the fish population of fish is possible.

**Prevention:**

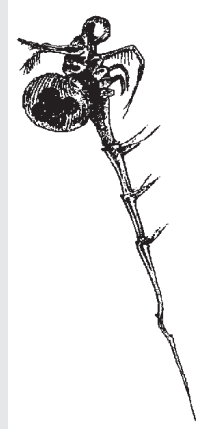
Today the best way to prevent the spread of Spiny Water Flea is to: **Inspect:** your boat, trailer, boating equipment, fishing tackle and nets and remove any visible plants or animals before leaving any water body. **Drain:** Water from your motor, live well, bilge while on land before leaving the water body.

**Empty:** Your bait bucket on land before leaving the water body. Never release live bait into a water body, or to another body of water.

**Wash/Dry:** Your fishing tackle, nets, boat and equipment to wash away any harmful species that you may not have noticed at the boat launch. Some Invasive Species can survive up to five days out of water. So it is very important to: rinse your boat and equipment with hot tap water (> 50° C), spray your boat and equipment with high pressure water (250 psi) and dry your boat and

equipment for at least five days, before transporting to another water body.

If you have any questions I can be reached at (705)-864-2164. Or you can call the Invasive Species Hotline toll free at 1-800-563-7711



# Kebsquasheshing Golf Club NEWS

Results of the 3 Person Best Ball held July 12, 2009: Flight 57 Gaston Demers, Susie Demers, Buddy Collings. Flight 63 Robert Noel, Gisele Noel, Patrick Noel. Flight 65: Curtis Brunette, Gwen McKnight, Luc Lortie. Flight 67: Lionel Gionet, Ann Marie Gionet, Jimmy Morin. Flight 70: Kevin Monahan,

Carmen Moreau, J.J. Fortin. Flight 73 Luc Riopel, Michel Riopel, Kurin Carroll. Flight 76: Jack Caldwell, Rosie Cloutier, Steve Caldwell. **Luck of the draw:** Yvon Noel, Pierrette Noel, Michel Noel. **\$20.00 draws:** Danny Pilote, Ann Marie Gionet, Micheline Noel, Michel Noel, Gaston Demers, Monica Pilote.

## Notification

### Notice of Aerial Spraying Martel Forest and Pineland Forest

As part of our ongoing efforts to regenerate and protect Ontario's forests, selected stands in the **Martel** (Tembec Enterprises Inc.) and **Pineland** (Domtar Inc.) **Forests** (see map) will be sprayed with herbicide to control competing vegetation, starting on or about: August 1, 2009 (Domtar Inc.) and August 10, 2009 (Tembec Enterprises Inc.).

On the Pineland Forest the herbicide Glyphosate (Vantage\* Forestry Herbicide Solution), registration number P.C.P. 26884 Pest Control Products Act will be used. On the Martel Forest the herbicide Forza, registration number P.C.P. 26401 Pest Control Products Act will be used.

Portions of the following townships or proposed spray areas adjacent to the following townships will be receiving herbicide application:

**Domtar Inc.**

Biggs  
Coppell  
Denyes  
Evans  
Foleyet

Halcrow  
Hellyer  
Ivanhoe  
Lemoine  
Muskego

Newton  
Oates  
Oswald  
Raney

Rollo  
Shenango  
Silk  
Swayze

Warren  
Whalen  
Whigham  
Wigle

**Tembec Enterprises Inc.**

Abbey  
Addison  
Alcorn  
Bader  
Beckett  
Birch  
Blackburn  
Bonar  
Bordeleau  
Borden  
Bounsall  
Braithwaite  
Brutus  
Busby  
Cassidy  
Caverly  
Chapleau  
Chaplin

Chappise  
Clifton  
Cochrane  
Collins  
Crepieul  
Cull  
Dalmas  
Daoust  
Darcy  
Deans  
Degaulle  
Delaney  
Drea  
Dukszta  
Dupuis  
Eaton  
Fitzsimmons  
Floranna

Gallagher  
Gamey  
Genier  
Gilliland  
Hoey  
Jeffries  
Kalen  
Keesickquayash  
Lackner  
Laforme  
Lang  
Langlois  
Lloyd  
Manning  
Marsh  
Marshall  
Miskokomon  
Moen

Moggy  
Murdoch  
Nadjiwon  
Neelands  
Neill  
Nimitz  
Patenaude  
Paul  
Reaney  
Sadler  
Sandy  
Sherlock  
Strom  
Symington  
Topham  
Triquet  
Vondette  
Whitehead

More information about this aerial herbicide project, including specific locations and maps, is available for viewing at the offices of Domtar Inc. (Pineland Forest), Tembec Enterprises Inc. (Martel) and the Ministry of Natural Resources during normal business hours.

**Pineland Forest**

**Mike Forrest, R.P.F.**  
Operations Forester  
Domtar Inc.  
267 McChesney Rd.  
Timmins, ON P4N 7C3  
Tel.: 705-267-3339

or **Kelly Ellis, R.P.F.**  
Area East Forester  
Ministry of Natural Resources  
Chapleau District Office  
190 Cherry St.  
Chapleau, ON P0M 1K0  
Tel.: 705-864-3163

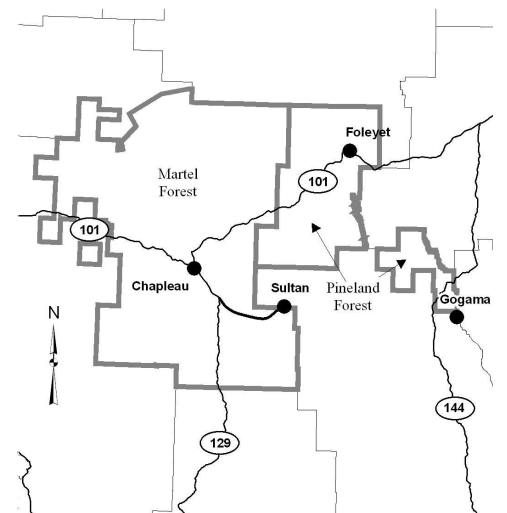
**Martel Forest**

**Al Tremblay**  
Silviculture Coordinator  
Tembec Industries Inc. (Chapleau)  
175 Planer Road  
Chapleau, ON P0M 1K0  
Tel.: 705-864-3022

or **Kelly Ellis, R.P.F.**  
Area East Forester  
Ministry of Natural Resources  
Chapleau District Office  
190 Cherry St.  
Chapleau, ON P0M 1K0  
Tel.: 705-864-3163

Please note that collect calls will be accepted.

Renseignements en français : Ministry of Natural Resources (705) 864-1710.



The Children's Aid Society of the Districts of Sudbury and Manitoulin / La Société d'aide à l'enfance des districts de Sudbury et de Manitoulin / 319 Lasalle Boulevard Sudbury, ON P3A 1W7

**NOTICE OF BREAKFAST ANNUAL MEETING SEPTEMBER 10, 2009 at the HOLIDAY INN**

The Society's Annual Meeting will be held on September 10, 2009 at 8 a.m. at the Holiday Inn, 1696 Regent Street, Sudbury.

The CAS invites you to become an individual or corporate member and make a difference in the lives of children. The role of the member is to promote the well-being and protection of children and youth in our area. All you have to do is complete a form and purchase a \$10 annual membership, of which \$5 of this fee is reallocated to the Sudbury Manitoulin Children's Foundation Bursary Program for youth in care and former youth in care. A three-year membership can be purchased for \$30. Purchase a membership on or **before August 12, 2009** and you will be eligible to vote at the Annual Meeting. Please R.S.V.P. attendance to the Annual Meeting **by September 4, 2009.**

If you are interested in obtaining the necessary form to become a Society member or in attending the Annual Meeting, please call (705) 566-3113, extension 2202, or visit our office at 34 Birch Street, Side Entrance, Chapleau.





**NEWS RELEASES**

**THEFT OF GOLF EQUIPMENT** – On July 15, 2009 a local resident attended the Chapleau OPP Detachment to report that between June 26 and June 27, 2009 person(s) unknown entered his 2007 Ford Edge and removed two sets of golf clubs and related equipment. The theft occurred on Adele Street in Chapleau. Items stolen include the following:

(1) Set of women's left handed clubs in a black golf bag with "PING" written on the sleeve and a yellow "King Cobra" snake of the arm part of the bag. The clubs are Ping eye 2 irons "1970"; Black series wedge 56-60 degrees; Ping Pal putter; Rapture 3 wood; 2 titlist gloves; a black and white umbrella; a charcoal grey rain suit and two dozen golf balls.

(2) Set of men's right handed clubs; one pair of Nike shoes – (one shoe was recovered near-by); a red/white/blue PING Hooper bag decaled with Montreal Canadian decorations/patches. Clubs are full bladed Nicky Victory red series irons; a tailor made R9 driver 460CC; a 3 wood 15 degree and a 5 wood 21 degree, tailor made; two Titlist wedges, a 56 degree and a 60 degree Vokey series; an Odyssey putter; a chrome series 54 degree tailor made rack; 3 dozen Prov 1

golf balls; 4-5 pair of golf gloves; a matching charcoal grey rain suit and a blue/white umbrella.

Total value of both sets is approx-

imately \$4500.00. It is believed that the vehicle was unlocked at the time of the theft.

The OPP is seeking the public's assistance in solving this crime. If

anyone has any information regarding this incident, they are asked to call The OPP at 888-310-1122 or Crime Stoppers at 800-222-TIPS (8477).

**LES P'TITS TRUCS ÉCOLOS** par Mélanie St-Martin

Afin de promouvoir un environnement vert, le centre FormationPLUS, en collaboration avec Chapleau Express, est fier de vous offrir des trucs simples chaque semaine pour vous aider à être plus écologiquement responsable. Cette semaine, on vous offre des trucs que l'on peut pratiquer avec le véhicule. Beaucoup de pollution est créée avec l'utilisation d'un véhicule, mais ces quelques trucs vont aider à supprimer un peu de cette pollution.

- + Tout d'abord, assurez-vous que l'utilisation de votre véhicule est nécessaire.
- Dans la mesure du possible, marchez ou utilisez votre vélo. Si vous devez utiliser votre véhicule, planifiez vos sorties afin de minimiser le va-et-vient. Par exemple, si vous devez aller à l'épicerie et au bureau de poste, faites-le dans un voyage et non deux;
- + Si vous devez vous aller à plusieurs endroits, stationnez vous à un des endroits et marchez aux autres places;
- + Ne laissez pas votre véhicule en marche lorsque vous devez arrêter quelque part ou pour réchauffer votre véhicule en hiver. Un véhicule en marche qui reste stationnaire pendant plus de 10 secondes utilise plus d'essence qu'il en utilise pour le redémarrer. Si vous devez réchauffer votre véhicule, procurez-vous d'un chauffe-bloc au lieu;
- + Il vaut mieux de restreindre l'utilisation du climatiseur, car ceci augmente la consommation d'essence de 20 %. Au lieu, ouvrez les fenêtres à moins que vous soyez sur l'autoroute, car plus d'essence va être utilisée à cause de la résistance du vent;
- + Ralentissez!!! La consommation d'essence augmente avec la vitesse. Si vous roulez à 120 km/h, vous utilisez 20 % plus d'essence que si vous roulez à 100 km/h. Donc ça vous coûte beaucoup plus cher d'essence, sans compter l'augmentation des chances d'avoir une contravention. Aussi, c'est mieux de conduire avec votre régulateur de vitesse, car ceci diminue la consommation d'essence.

Chaque semaine, assurez-vous de vérifier les trucs que vous pouvez faire quotidiennement et de les mettre en pratique afin de vivre dans un environnement plus écologique. Pour plus d'info : melanie.stmartin@gmail.com

**ECO-TIPS** by Mélanie St-Martin

To promote a greener environment, FormationPLUS, in collaboration with Chapleau Express, is proud to offer you simple tips each week that will help you live a more eco-friendly life.

This week, we're offering you simple tips that you will be able to practice with your vehicle. A lot of pollution is created with the use of vehicles, but these few tips will help diminish it.

- + First off, make sure that the use of your vehicle is necessary. Meaning that when possible, use your bike or walk instead; it is good for your health and the environment. If you do have to use your vehicle make the trip worth while, plan it out and try making all of your stops in the same trip. For example going to the grocery store and picking up a package at the post office;
- + Don't leave your vehicle idling. Leaving your vehicle running for more than 10 seconds while it remains stationary will actually use up more gas than turning it off and then restarting it. Therefore, with a little consideration for our environment turn your vehicle off while it will be remaining stationary even if it is only for a matter of two minutes;
- + Use the air conditioner as little as possible. This increases your gas consumption. It is wiser to run the air conditioner while traveling the highway due to wind resistance but for simple around town driving, rolling down your windows will work just as well;
- + Slow down!!! Your gas consumption increases with speed. If you're driving at 120 km/h, you are actually using 20 % more gas than if you drive at 100 km/h. So obviously traveling at 120 km/h will cost a lot more in gas and that is without taking into consideration how much greater your chances of getting a speeding ticket are. Also, the use of your cruise control helps to decrease gas consumption while you are traveling the highways;

Make sure you look every week for tips that you could do every day to live in a better, greener environment. For more information: melanie.stmartin@gmail.com

**1er FONDACTION DE L'HÔPITAL GÉNÉRAL DE TOURNOI DE GOLF ANNUEL 2009**

en partenariat avec 

- Prix d'argent et autres prix
- 2 prix de 3 500 \$ pour un trou d'un cou
- Photos d'équipe
- Cadeaux publicitaires
- Souper
- 250 \$ / équipe de 4 personnes

Chapleau General Hospital Foundation  
Fondation de l'Hôpital Général de Chapleau

**Le samedi 29 août 2009**  
**Club de golf Keksquasheshing, Chapleau**

Les formulaires d'inscription sont disponibles aux endroits suivants : Banque Royale du Canada, Club de golf Keksquasheshing et Centre médical de Chapleau. Pour plus d'info sur cet événement et les possibilités de commandite, communiquer avec Allison Murphy au 705 864 2568, poste 33.

**BEAR WISE**

**You're in bear country**  
**Be Bear Wise.**

Planning on enjoying Ontario's campsites, lakes, forests and hiking trails this year? Remember that you're in the natural habitat of black bears.

**Don't attract black bears:**

1. Pack all food, including dog food, with special care in sealed containers
2. Pack a couple of long ropes to hang your food pack at least 4 metres off the ground
3. Remove grease and food residue from your campfire or barbecue and properly douse the fire

While the chance of seeing or encountering a black bear is low, it is best to be prepared –


- Do not approach the bear
- Slowly back away
- Do not turn and run

To report bear problems call:  
**1 866 514-2327** TTY 705 945-7641

In a life-threatening emergency, call your local police or 911.

For more information, visit our website:  
**ontario.ca/bearwise**

Paid for by the Government of Ontario.





**THE LOCAL MARKET PLACE**

**CHADWIC HOME, FAMILY RESOURCE CENTRE**

Offers shelter, emotional support, and information for women and their children who are in crisis situations. We have a Toll Free Crisis Line which is staffed 24 hours a day. We can arrange for free transportation to the Centre for women who live in the Algoma/Chapleau area. We also offer support to women who live in the communities of Chapleau, White River, Dubreuilville, and Hornepayne through our Outreach Program. Our Outreach Worker travels to those communities to meet with women who need emotional support as well as information about their rights and options. If you need to speak with the Outreach Worker when she is in your community, you can call the Centre at any time to set up an appointment. You do not need to be a resident of the Centre in order to use our services. If you need someone to talk to or if you just need someone to listen, call our Toll Free Crisis line at 1-800-461-2242 or you can drop in at the Centre. We are here for you.

**ALCOHOLICS ANONYMOUS**  
Offers help to anyone who desires to stop drinking. Open discussion meeting on Sundays at 2:00 p.m. Trinity United Church basement. Telephone contacts: 864-2786

**ALCOOLIKES ANONYMES**  
Offre de l'aide à celui ou celle qui désire arrêter de boire. Les rencontres ont lieu tous les mercredis soirs à 19h (7:00 p.m.) Au sous-sol de l'église Sacré-Coeur. Téléphonez au 864-2786

**Narcotics Anonymous** offers help to anyone who desires to stop using drugs. Meeting every Thursday 7:30 p.m. basement Sacred Heart Church. Telephone contact 864-2786.

**Société Alzheimer Society meetings** will be held at the Chapleau Hospital every 1st Monday of each month starting from 7:00 p.m. to 9:00 p.m.

**APARTMENTS FOR RENT**

**1-2 and 3 bedroom apts.** and bachelor. For more information call 864-1148 or 864-4071(cell)<sup>Aug29</sup>

**You need a decent apartment** with 1, 2 or 3 bedrooms, fully or semi-furnished, or not, dryer and washer hookups, outdoor balcony, storage shed, private parking. Central location. Call Quality Rental at 864-9075 and leave message.<sup>Aug8</sup>

**Large 1 bedroom apt.** 700 sq.ft. Fridge and stove included. Available Sept. 1st, possibly sooner. Call 864-0677.<sup>Aug8</sup>

**2 bedroom apt.** available Aug. 15. Downtown, apt. size w/d hook up, Snow removal, for more info. Call (705)673-5526 ask for Earl.

**Cabin for rent** in Esher. Hydro included & fridge and stove. Call 864-2471 or 705-362-6624<sup>Ag1</sup>

**FOR SALE**

2007 Ford Explorer 30,000 KM, 7 passenger seating, Remote start, Electronic Anti-rust, Built in Sirius Radio, Seat Covers etc. For more information call 864-0977.<sup>July25</sup>

**FOR SALE: (moving sale)** coffee table and 2 end tables, 2 lamps, Dining room table and 4 chairs, matching china cabinet, Washer, dryer & upright freezer. Call 864-0404.

**HOUSE FOR RENT**

**1 small house** for rent. Furnished, utilities not included. \$300.00 per month. 864-2080

**HOUSES FOR SALE**

**3 bdr house,** garage, woodshed, electric and wood heat. 8 Pine Park. Call 864-0919.<sup>Ag1</sup>

**HOUSES FOR SALE**

**PRICE REDUCED. Home for sale on Devon Siding road** 3 bdrm, 2 baths, large eat-in kitchen, dining room, large living room, sunroom, partially finished basement, new roof 2008, 24'x44' heated 2 story garage with workshop and full loft, wood fired boiler, second garage/woodshed approx. 24'x24', greenhouse, mature gardens and more. Can be seen on saultstemarie.kijiji.ca. NOW ASKING \$219,000.00. Will consider all reasonable offers. Call 864-9007 for an appointment to view.<sup>Ag1</sup>

**WOOD STOVES**

For Sale, New Blaze King Wood Stoves, shipped direct to Chapleau. For the best prices on Blaze King wood stoves call Rick Geroux: 705-779-3304.<sup>ctd</sup>



**HAVE A GOOD WEEKEND!**



**Village Shop Apartment**

Cozy, renovated 2 Bedroom with fridge & stove, secured building, laundry facilities on site. Call Lucy @ 864-1114

**Chapleau Valu Mart**

Has an immediate full-time opening for a **Produce Clerk**

**Responsibilities:**

- Organize and rotate stock in back room and selling floor.
- Maintain selling floor and back room.
- Follow and implement the merchandise "plan-o-gram."
- Fill counter and display bins regularly
- Trim, handle and care for stock
- Provide excellent service to customers
- Create and place product orders

If you are interested in the opportunity, please send resume to:

**Lynn Bignucolo**  
Chapleau Valu Mart  
P.O. Box 100, Chapleau, On. P0M 1K0

We thank all those that apply, however due to the high volume of resumes, only those who are selected will be contacted

**FLOOD'S STRAWBERRIES**

**"Pick Your Own or Already Picked"**

**Open 8 a.m. to 8 p.m.**

Take Hwy. 129 to Little Rapids Road. (3 miles before Hwy. 17)  
Take Clover Road for one mile  
If you're picking, bring your own containers or buy them on location.

FOR PICKING CONDITIONS OR FOR AN ORDER, CALL **1-705-842-3925**



**NEW AT THE CHAPLEAU PUBLIC LIBRARY**

**NEW BOOKS**  
The Fossmill Story - Doug & Paul Mackey  
Stripmalling - Jon Paul Fiorentino  
Work it! - Allison Hemming  
The Tourist (Talking Book) - Olen Steinhauer  
The rise of the creative class - Richard Florida  
Fault Line - Barry Eisler

**SUMMER STORY HOUR**

Come in the Library to register for the Summer Reading Club and Story Hour each Wednesday at 2 p.m. beginning July 15th. This year's Detective Theme and Agent 009 promises to be great fun. Be sure to ask about the new bus service.

**SLOMA CLEANERS**  
Drop off at **Between Friends (Cedar Grove)**  
Mon. Fri. 8.30 to 4.30

**BERRY'S FREIGHT SERVICES**

TIMMINS - CHAPLEAU - TIMMINS  
**MONDAY TO FRIDAY**  
1lb. to 10,000 lbs.  
FOR QUALITY SERVICES AT INEXPENSIVE PRICES GIVE US A CALL AT **1-705-264-4334**

**ALL ADS ARE ACCEPTED AT THE CHAPLEAU INNOVATION CENTRE**  
DEADLINE FOR RECEIVING ADS IS **WEDNESDAY 4:00 p.m.**

**CLASSIFIED ADVERTISING RATES**  
Regular Classified Ads  
First 25 words or less \$6.25  
Each additional word \$0.16+GST  
**No refunds on cancelled classified ads.**

**I.D. Photos**  
FAC - PAL  
**864-1870**

**Travis Gendron**  
Sales Manager  
61 Mission Road  
Wawa, Ontario, P0S 1K0  
Tel: 705-856-2394  
Cell: 705-856-5595  
Fax: 705-856-4290  
travisgendron@missionmotors.com

**MISSION MOTORS of WAWA**  
NEW & PRE OWNED VEHICLE SALES  
GM Goodwrench SERVICE CENTER  
MISSION MOTORS 24hr TOWING  
PONTIAC, GM Canada, GMC, CHEVROLET

**ALLEMANO & FITZGERALD**  
Barristers and Solicitors  
**MICHAEL G. ALLEMANO, B.A., L.L.B.**  
Certified by the Law Society as a Specialist in Real Estate Law  
P.O. Box 10, 369 Queen St. E. Suite 103, Sault Ste. Marie, Ontario P6A 1Z4  
Phone (705) 942-0142 Fax (705) 942-7188  
P.O. Box 1700, 55 Broadway Avenue, Wawa, Ontario P0S 1K0  
Phone (705) 856-4970 Fax (705) 856-2713

**Northern Lights Ford Sales**  
Andrew G. McKenzie  
11 Years of Service  
 Highway 17, North  
P.O. Box 1033  
Wawa ON. P0S 1K0  
Bus: 705.856.2775  
Fax: 705.856.4862  
sales@northernlightsford.ca

**BODYLINES BY CRACK LTD.**  
-5 Licensed Bodymen  
-Insurance Claims  
-Windshield Repairs and Replacement  
-State of the Art Frame Machine  
**ALL WORK GUARANTEED**  
PLEASE CALL 705-856-1406

**LVP** LABERGE VENNE & PARTNERS  
PROFESSIONAL CORPORATION  
CHARTERED ACCOUNTANTS and CONSULTANTS  
COMPTABLES AGRÉÉS et CONSULTANTS

Professional Services to Northern Ontario for 25 years  
Financial Statements for Small Business & Corporations  
Tax Returns - Personal, Corporate and Trust/Estate  
Personal, Retirement, Estate Financial and Tax Planning Strategies  
Business Projections, Plans and Financial Proposals  
Computer Consulting  
ACCPAC and Quickbooks

1970 Paris Street, Sudbury, Ontario P3E 3C8  
(705) 523.0272 (800) 581.7510 www.lvpartners.ca

**LVP** LABERGE VENNE & PARTNERS  
PROFESSIONAL CORPORATION  
CHARTERED ACCOUNTANTS and CONSULTANTS  
COMPTABLES AGRÉÉS et CONSULTANTS

25 ans de service professionnels pour les entreprises du Nord de l'Ontario  
États financiers pour petites et moyennes entreprises et corporations  
Rapports d'impôts personnel, de compagnie et de fiducie  
Planification financière et fiscale personnelle et de compagnie  
Projections financières, plans d'affaires et propositions de financement  
Consultation en informatique  
ACCPAC et Quickbooks

1970 rue Paris, Sudbury, Ontario P3E 3C8  
(705) 523.0272 (800) 581.7510 www.lvpartners.ca



# Il faut déclarer un ours qu'on abat pour défendre ses biens *Ne pas le faire constitue une infraction*

Le ministère des Richesses naturelles tient à rappeler que, en vertu de la Loi sur la protection du poisson et de la faune, il faut déclarer immédiatement un ours qu'on a abattu pour

défendre des biens au bureau du ministère de sa localité, soit en personne, soit par téléphone. Ne pas le faire constitue une infraction à la Loi.

Abattre un ours ne doit être qu'un dernier recours, après

que l'on a essayé tous les autres moyens de le faire partir. La meilleure façon d'éviter les problèmes entre humains et ours est d'en éliminer les causes avant qu'un problème ne surgisse, en éliminant ou en mettant à l'abri ce qui attire les ours. Les déchets, les mangeoires à oiseaux, y compris les graines et le nectar, les aliments pour animaux de compagnie, les odeurs et la graisse des barbecues et les fruits mûrs qui pendent aux arbres ou sont tombés au sol attirent les ours sur votre propriété et dans votre voisinage.

Un propriétaire foncier a le droit, en vertu de la Loi, d'abattre un ours pour défendre ses biens, mais il doit le faire

sans causer de souffrance à l'animal et en prenant les mesures de sécurité voulue, conformément à tout arrêté local concernant l'usage des armes à feu. Le ministère recommande fortement que la tâche soit confiée à un chasseur ou à un trappeur qualifié.

Si vous avez tout fait pour éliminer ce qui attire un ours, mais que l'ours persiste, signalez le problème au 1 866 514-2327 (sans frais); ligne ATS au 1 705 945-7641.

Appelez la ligne Attention : ours du ministère des Richesses naturelles au 1 866 514-2327 (sans frais). Durant la saison des ours, vous parlerez directement à une personne.

Si la vie d'une personne est en danger, composez le 911 ou appelez le service de police.

Signalez une infraction liée aux ressources naturelles en appelant le ministère sans frais et en tout temps au 1 877 847-7667 ou contactez le bureau du ministère

de votre localité durant les heures normales de bureau.

On peut aussi appeler, sous l'anonymat, Échec au crime, au 1 800 222-8477.

Pour d'autres renseignements sur les ours, rendez-vous au site [ontario.ca/attentionours](http://ontario.ca/attentionours).

## Roger Carriere of Monuments Carriere

(formerly R&F Monuments)

is inviting all Chapleau residents in need of Monuments, Accessories, Engravings or Repairs to contact him.

Roger continues to offer outstanding service to the Chapleau area.

Chapleau residents are also invited to visit him at his Sudbury location.

**10%**  
off on all monuments  
until the end of August

Call Roger toll free at 1.877.525.7705  
between 9:00 a.m. and 4:00 p.m.  
to set up an appointment  
for him to come to Chapleau.

[www.monumentcarriere.ca](http://www.monumentcarriere.ca)



**CANADIAN  
PACIFIC  
RAILWAY**

### Road Closure August 1st. 2009

This announcement from Canadian-Pacific Railway is for those who use the road into the Niska North / Domtar mill & the Lafreniere Road in Chapleau Ontario. To complete track maintenance work, the railway crossings into the Niska North / Domtar mill & the Lafreniere Road will be closed to through traffic for approximately three hours between 2:00 a.m. and 10:00 a.m. Saturday, August 1st. 2009. CPR apologizes for any inconvenience this road closure may cause.

## NEW ARRIVALS



We now carry  
"SWISS MILITARY WATCHES"

PRICED FROM AS LOW as **\$150<sup>.00</sup>**  
FOR LADIES & MEN

## All Summer Fashions ON SALE

COMPARE - We Won't be Undersold  
Chapleau Village Shops

**SOURCE**  
864-1114

WORKWEAR • FASHIONS • JEWELRY • GIFTWARE

**864-1114**

**Sears**

Catalogue & Appliance Centre 864-1852

## NOTICE OF HERBICIDE APPLICATION

Notice is hereby given that Hydro One Networks Inc. – Forestry Services will be commencing Forestry Herbicide Application for brush control in your vicinity. The work will include the selective treatment of undesirable vegetation that would, if left alone, grow into the conductors. Every effort will be made to leave compatible low growing vegetation, which will assist in reducing future maintenance requirements.

**Location of work:** T61S Circuit - Timmins TS to Weston Lake DS.

**Townships of Tisdale, Mountjoy, Ogden, Bristol, Carscallen, Denton, Keefer, Hillary & Sewell**

**Date of application:** August 1- August 31, 2009

**Pesticide trade name:** Tordon 101 and Sylgard 309

**PCP Act registration number:** 9007, 34737

**Name of pest:** Undesirable Vegetation

(Brush and sucker growth from stumps)

If you have any questions or concerns, please contact Hydro One Forestry at 1-866-898-5310

**ALL PROPERTY OWNERS AFFECTED WILL BE CONTACTED**

hydro   
one