

Talk about good coffee!

Miss Muggins Coffee and Fresh Donuts



CHAPLEAU EXPRESS

Vol. 15, Issue 18, January 15, 2011

PIZZA HUT & KFC
There's a Reason We're Number 1
"0 TRANS FAT"
864-0911



2nd Annual Fun Run-Walk a big success



All participants take a moment to have a group photo taken prior to departure.

Walkers and runners at the 2nd Annual Together We Run January 1st event enjoyed entirely different weather conditions than the -30 temperature participants faced in last year's event. This year 26 walkers and

runners enjoyed a +3 temperature, and most importantly, raised just over \$5,700 to go towards the Chapleau General Hospital's "Together we will Grow" medical equipment campaign.

Several participants also won great prizes during the

random draw held after then event. Gift cards from Chapters, Home Hardware, Esso, Running Room, Body Shop, Cineplex, President's Choice and the Between Friends store were won, along with the pledge draw prize of a PS3.

Top finishers in the 2.5 km event were: Cole Bignucolo - 15:38; Sydney Bignucolo - 18:03; Marshall Canning - 20:53

Top finishers in the 5 km event were: Eric Leishman - 16:53; Debbie Canning - 24:47; Pauline Connors - 25:10

Winner of the PS3 - Jack O'Connor

On behalf of the Chapleau General Hospital Foundation, thank you and congratulations to all the participants for starting the year right putting your health and the community's health first by exercising and raising money. Thanks as well to all



Fully enjoying the mild weather conditions, Vincent Carrière prepares to start the race.

the volunteers that a successful event. assisted to ensure such Happy New Year!

Holiday Train: food donations doubled

On Sunday December 2, 2010, Canadian Pacific Holiday Train made it's annual stop in Chapleau.

The Holiday

Train is a freight train covered in hundreds of thousands of bright lights. At 140 stops across Canada and United States, Canadian Pacific provides a box car stage, a line up of great musical talent and a corporate contribution to the local food bank. Food banks provide collection bins for non-perishable food. Communities, in turn, donate food and funds, all of which stays in the community. The Holiday Train has

raised over \$4.8 million and 2.3 million pounds of food.

The donations in this year's local food drive doubled as compared to 2009. The local Oddfellows have been involved, year after year, in the co-ordination of the drive along with distribution of food to needy families.

Christmas was a little cheerier for certain families, thanks to all the Oddfellows and volunteers.



Oddfellows Howard Goheen and Dave Futhey loading up the trucks with non-perishable food donations.

Long Term Forecast

Friday
High -11
Low -26

Saturday
High -6
Low -21

Sunday
High -14
Low -24

Monday
High -11
Low -22

Tuesday
High -8
Low -19

Wednesday
High -9
Low -18



FREE BRAKE INSPECTION SERVICE & SPECIAL
Oil Change & Service on your Vehicle
ONLY \$24.95
(Oil and filter not included)

See Rick our Licenced Mechanic



Visit our website at www.northernhaul.com for a list of our services!



See where your love of cosmetics can take you.

Beautician
 Esthetician
 Industrial hygienist
 Skin care specialist
 Textile dye technician
 Manufacturing engineer
 Advertising manager
 Merchandiser
 Botanist
 Pharmacist
 Airbrush artist
 Web page designer
 Technical writer

Package designer
 Magazine editor
 Form layout designer
 Contracts officer
 Media relations director
 Director of photography
 Fashion photographer
 Horticulturist
 Accountant
 Commercial artist
 Purchasing agent
 Dermatologist
 Promotion specialist
 Chemical engineer
 Retail trade manager
 Makeup artist

Turn your passion into a career.

With a range of grants, scholarships and loans, starting college or university may be easier than you think.


ontario.ca/myfuture

Paid for by the Government of Ontario



OBITUARY

Corston, Charles Edward



In sadness, but with grateful hearts for a life well lived, the family of Charles Corston announce his passing on October 10, 2010. Predeceased by his wife Irene, Charles leaves behind his four children, Wayne (Barbara), Brian (Nancy), Janice (Rob) and Cindy (Peter).

Also left to mourn his loss are ten dearly loved grand-children; Shane, Stacy and Dana, Jeff, Jeremy and Dean, Michael and David, Justin and Kyle. Charles was also the great-grandfather to ten great-grandchildren; Taylor and Makenna, Spencer, (Canuck) Grace and Jacob, (Kiwi) Grace and Hope, Brody, Sophie and Charlie Armaile.

Charles was born in Chapleau on January 20, 1918 to John and Lydia Corston. He was the last of seven brothers.

Charles led his family by example. He was a strong, caring, kind father, grandfather and great grandfather. His commitment to family, strong work ethic, generous spirit and avid Maple Leaf fan, are part of the memory held by all those who loved him.

A memorial service was held in Burlington on October 14, 2010. His ashes will be taken to Chapleau in August 2010.

The Chapleau Express
 P.O. Box 457
 Chapleau (Ont.) P0M 1K0
 Telephone - Fax : 705-864-2579
 e-mail : chaexpress@sympatico.ca
 Published every Saturday/Sunday
 Deadline for receiving ads is Wednesday at 4 p.m.

The Chapleau Express is delivered free of charge to every household each Saturday. If you have any comments, please feel free to contact us. Subscriptions: \$80.00 per year (Canada) \$150.00 U.S per year (U.S.A) Canadian Publications Products Sales Agreement #30183799

CLASSIFIED ADS WORK


OBITUARY

SCHMIDT, Conrad 'Con'

Suddenly but peacefully at the Sudbury Regional Hospital on Monday January 10, 2011 at the age of 76 years. Beloved husband of Wilma. Wonderful dad of Bernadette Pedneault (Rob), Steven Schmidt, Rosario 'Marc' Beaulieu (Laura) and Roch Beaulieu (Lisa). Very proud grandpa of Ryan, Morgan, Ben and Cole. Dear brother of Dale Hayes (Ted), Neil Schmidt (Patricia), late Phyllis Trahan (late Romeo), late Aneda Godfrey (late Gene), late Sheila Hayes (Gilbert) and the late David Schmidt (Chandra). Con will be lovingly remembered by many nieces, nephews and friends. Funeral arrangements will be announced later. Memorial doantions made to the Trinity United Church or to the Ontario Heart & Stroke Foundation would be greatly appreciated by the family. (Funeral arrangements entrusted to the P.M. Gilmartin Funeral Home, Wawa, 1-800-439-4937).

OBITUARY

WOODS, Linda Gail



After a long and courageous battle with cancer Linda passed away peacefully at the Chapleau Health Services on Tuesday January 11, 2011 at the age of 65 years. Devoted mother of Derek (Cheryl Card), Brent (Priscilla O'Leary) and Todd (fiance Nancy Bass). Cherished grandmother of Ryker and Cameron Woods. Loving daughter of the late Audrey and Gordon Bolduc. Dear sister of Gordon Bolduc Jr. Linda will be fondly remembered by her nephew Jason and niece Nicole and sadly missed by her four legged companion Tuk. Friends are invited to visit at the Chapleau Civic Centre on Friday evening from 7 to 9 p.m. A memorial service will be held at the Trinity United Church on Saturday January 15, 2011 at 11:00 a.m. with Mrs. Anna Chikoski officiating. In lieu of flowers, memorial donations made to the Trinity United Church would be greatly appreciated by the family. (Funeral arrangements entrusted to the P.M. Gilmartin Funeral Home, 1-800-439-4937).

GOING TO CHURCH

Catholic Church SACRED-HEART OF JESUS PARISH
PAROISSE SACRÉ-COEUR DE JÉSUS
 26 Lorne Street North
 OFFICE- 21 Lansdowne St.N.
 864-0747
 New Schedule Effective Nov. 7/09
 Nouvel horaire à compter du 7 nov/09
 Sat/sam 7 p.m. (E or F)
 Sun/dim 9:30 a.m. (F or E)
 Weekdays/Semaine lun-ven 9:30 a.m.
 Wed/Mer (Hosp) 11:30 a.m.
Fr. Sébastien Groleau

ST. JEAN DE BRÉBEUF (Sultan)
 Liturgy of the Word
 Liturgie de la parole
 Mass 3rd Sunday
 Messe 3e dim 12:00 Noon (B)
 Permanent Deacon
 Diacre Permanent
 Ted Castilloux

Diocese of Moosonee Anglican Church of Canada
ST. JOHN'S CHURCH
 4 Pine Street West
 864-1604
 Sunday Service
 10:30 a.m.
 Rev. Bruce Roberts

ST. MARY'S ANGLICAN CATHOLIC CHURCH
 78 Devonshire Street
 864-0909
 Sunday Service 10 a.m.

CHAPLEAU PENTECOSTAL CHURCH
 9 Elm Street (P.A.O.C.)
 864-0828
 Sunday 10:30 a.m. & 7 p.m.
 Wed. Family Night 7-8 p.m.
 Fri. Story Hour
 3:30-4:30 p.m.
 Pastor Dan Lee

TRINITY UNITED CHURCH
 Corner of Beech and Lorne
 864-1221 Sunday Service and
 Sunday School 11:00 a.m.
 Anna Chikoski
 Soup Kettle every 2nd Wednesday
 of the month
 www.angelfire.com/on/trinityuc

OUR LADY OF SEVEN SORROWS PARISH
PAROISSE NOTRE-DAME-DES-SEPT-DOULEURS (Foleyet)
 Liturgy of the Word
 Liturgie de la Parole
 Mass 2nd-4th Sunday/
 Messe 2e-4e dim 12:00 Noon (B)

COMMUNITY BIBLE CHAPEL
 Corner of King and Maple
 864-0470
 Communion Service 9:30
 Family Bible Hour 11 a.m.
 Including Sunday School
 Evening Bible Study and
 Ladies Bible Study
 during the week
 Transportation available
 Al Tremblay

Petrosky family home in Chapleau a wonderful place to live complete with dance hall and star gazing from the rooftop

Chapleau Moments
by
Michael J. Morris



At the dawn of the 20th century more families were arriving in Chapleau as it became an increasingly important divisional point on the main transcontinental line of the Canadian Pacific Railway.

John Anthony Petrosky was born in Lithuania in June 1867, and at age 19 in 1891, arrived in Canada to work for the CPR. His twin sister Elizabeth arrived later to join him in the new country.

In 1897, John Petrosky had met and married Mary Eva

Argentine Brunet in Sudbury. His wife was from St. Placide, Quebec.

They moved to Chapleau in 1898, just 13 years after it had been established at Mileage 615.1, and three years before the community was incorporated as a municipality.

Renee Cecile, one of the 14 Petrosky children wrote about her family some years ago as part of the Centennial of Sacred Heart Roman Catholic Church, and her son Michael kindly made it available for part of

the series of moments in the lives of Chapleau families.

Mrs. Cecile wrote that when her parents met, her father could not speak French and her mother could not speak Lithuanian so they compromised and both learned English. As their children went to school, their parents learned even more English.

Mr. Petrosky's sister Elizabeth married Alfred Vezina and they had a son Alfred who married Minetta Vezina from another Chapleau pioneer family. Their children were Berniece, Eugene, Francis, John, Joseph and Clement.

In 1912, Mr. Petrosky decided to build a home for his growing family, and it was located on the corner of Cedar and Lansdowne Streets across from the former motel.

Mrs. Cecile provided a wonderful description of their home:

"What a wonderful place in which to spend your childhood - back stairway in the kitchen, another in the front hall, two more in the double cellar and one going up to a large attic, two bathrooms, a large dance hall and to top it off, a trap door in the roof, with a ladder, so you could sit on the edge of the roof and see all over town.

"You could also study the stars. I still remember every constellation I learned

up there." On life in their home:

"What exciting games of hide and seek and tag we played. My poor mother had more patience than any person I've ever met. I can't ever remember her yelling or hitting us.

"As the older children left there were bedrooms to spare and when empty we could choose any room we liked for a bedroom and move as often as we pleased.

"We could paint our own room too with a cheap powder paint which was mixed with water.

"What beautiful shades and blends of colours we ended up splashing around..."

In 1917, Mr. Petrosky left the CPR and went to work at the town water pump house.

"We used to love to visit him when we brought his lunch over. He'd show us all the workings, including the trap door in the floor. When it was open, you could see a holding tank of water, with the occasional fish.

"Outside there was a neat little rail line and a trolley car on which wood, mostly slab, was carried to the big stove that kept the steam engine running.

"Part of the present bridge covers the shoreline where we used to play."

Mr. Petrosky died in 1932 and Mrs. Petrosky in 1955.

The Petrosky house eventually was



The Petrosky house and family members 1914 (Family Collection)

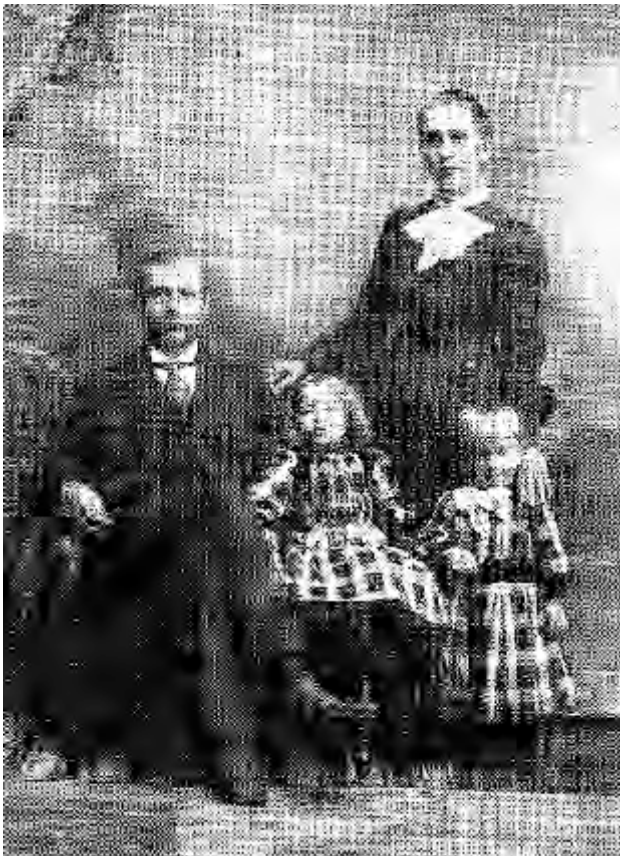
owned by their granddaughter Monica and her husband Albert Tremblay.

The Petrosky children were Eva, Patrick, Anna, Rosalie, Aline, Agnes, John, Elizabeth, Rita, Joseph, Bertha, Isadore, Cecil and Renee

Renee married Lawless Cecile and became one of the community's most popular teachers and librarians. She was also the driving force

behind the inclusion of the library in the Chapleau Civic Centre in 1978 when she was chair of the public library board. She was honoured at the official opening in June 1978 during the visit of Ontario Lieutenant Governor Pauline McGibbon.

Thanks to Michael Cecile for the information on his family, and the photos. My email is mj.morris@live.ca



John and Mary Petrosky in 1902 with Eva and Joseph (Family Collection)



Petrosky Girls 1928 - Seated at top Reta. Standing at left Anna. Standing at ring - Eva. Seated - Aline, Agnes. Standing in front - Renee



Ontario
Licenced
Motor Vehicle
Inspection Station



Chapleau Cree Auto/Truck
Monday - Friday
8:30 a.m - 4:30 p.m.
"Preventive Maintenance keeps you on the road"
FOX LAKE RESERVE

CALL
864-9090
for an
appointment

Déclaration des valeurs des patients

Le Projet de loi 46, la Loi de 2010 sur l'excellence des soins pour tous, est rentré en vigueur le 8 juin 2010. Alors, les organismes de soins de santé sont maintenant tenus de mettre au point une déclaration des valeurs des patients. Cette déclaration doit être créée en consultation avec le public. Donc, les Services de santé de Chapleau vous invitent de faire parvenir vos suggestions et vos commentaires par l'adresse électronique suivante : chapleauhr@sschs.ca

Dites-nous ce que vous croyez sont les droits des patients. Une ébauche d'une déclaration des valeurs des patients a été rédigée pour vous comme point de départ. Veuillez voir notre site Web au www.sschs.ca pour une copie de l'ébauche. Il se situe sous l'article intitulé Loi de 2010 sur l'excellence des soins pour tous,



Pimii Kamik Gas Bar & Gift Shop
 Located on the Chapleau Cree First Nation

WINTER HOURS
 will be from 7 a.m. - 9 p.m., 7 days a week

Drop by and check out our line of Authentic Native Crafts, Unique Gift Ideas, Jewellery, and Gift Certificates TOO!

We also carry road trip snacks, which includes Subs, Chips, Pop, plus a whole lot more.
 Your Propane Refilling Station

NOTICE

The Ministry of Training, Colleges and Universities, Employment and Training Division, will have an Employment and Training Consultant in Chapleau on:

Thursday Jan 20th and Friday Jan 21st, 2011

Chantal Rousseau, Employment and Training Consultant, will be available to provide services and answer questions regarding apprenticeship training, certification, examination and all other Employment Ontario programs. She can be reached at 363-5856 during her stay in Chapleau. For more information or to schedule an appointment ahead of time please call 1-877-275-5139 or her direct line at (705) 235-1951.


For those who intend to write an exam please call by **Tuesday Jan 18th.**

AVIS

Une conseillère en emploi et formation, du Ministère de la formation, des collèges et universités, Division de l'emploi et de la formation, sera présente à Chapleau le jeudi 20 et 21 de janvier 2011.

Chantal Rousseau sera disponible pour répondre à vos questions concernant l'apprentissage, la certification, les examens ainsi qu'aux questions vis-à-vis les autres programmes et services d'Emploi Ontario. Pendant son séjour à Chapleau, vous pourrez la rejoindre en composant le 363-5856. Pour plus d'information ou faire un rendez-vous avec la conseillère, veuillez composer le 1-877-275-5139 ou le (705)235-1951.

Pour ceux/celles qui veulent écrire leur examen, svp veuillez communiquer avec Chantal par **mardi le 18 janvier.**

 **Ontario**
 Ministry of Training, Colleges and Universities
 Ministère de la Formation et des Collèges et Universités

It Was The Best Of Times, It Was The Worst Of Times....

This line, taken from the Tale of Two Cities by Charles Dickens, could apply to the members of the Chapleau Senior Citizens Club. You will recall that their TV and Wii games were stolen from their centre last October.

However, the members of our local Legion donated the Wii games and two most generous local merchants, Doug Collins, owner/manager of Home Hardware, and Marc Beaulieu of Home Furniture donated a brand new TV to replace the stolen one.

Only in Chapleau, such kindness exceeded the expectation of all the seniors. The members of Club Maria Chapdelaine share our facilities and are also most appreciative of this kind donation.

Not only is our faith in humanity restored, but we will get back to our favourite activities.

The exercise classes have resumed along with line dancing, art classes, bridge and gourmet luncheons.

Memberships fees are \$10.00 payable to Lise Bernier. New Members 50 and over are most welcomed! A reminder to present members, time to renew.

Meetings are held every second Wednesday of the month, at 2 pm. at Cedar Grove. Please make an effort to attend.

ATELIER ATELIER ATELIER

Peinture à l'huile avec l'artiste Gisèle Therrien

Découvrez les éléments essentiels pour créer votre chef-d'œuvre

Les ateliers auront lieu le vendredi 21 janvier de 18h à 21h
 Et le samedi 22 janvier de 12h à 16h à l'École secondaire Trillium

Coût : 30\$ pour les deux jours

Matériel requis : seulement votre toile mais vous pouvez l'acheter de l'artiste. Peinture et pinceau fournis par l'artiste

Information et réservation, contactez Diane au 864-1126
 Centre culturel Louis-Hémon

Le Centre De Garde De Chapleau

veux vous assister à prendre soins de vos enfants pendant que vous êtes au travail, à l'école ou simplement pour prendre une petite pause.

Nous offrons une variété de programme d'apprentissage et de garde pour les enfants de 18 mois jusqu'à 12 ans.

Les services sont disponible en français de 7h 30 à 17h 30 du lundi au vendredi.
 Nous offrons différents options d'utilisateur, des tarifs de famille et des subventions.

Passez nous visiter au 28 rue golf ou composez le 864-1886 pour plus d'information. Laissez nous faire parti de l'expérience d'apprentissage de votre enfant!

Mayor Byham to Rotarians: A Perspective on our Past, Present, and Future

On January 4, 2011, Chapleau's newly elected mayor, André Byham, shared with local Rotarians his assessment of Chapleau's plight in these challenging times.

The Mayor noted that in the immediate past, the municipality has undertaken major street rebuilding projects on both sides of the tracks and on the viaduct that crosses those tracks. At the same time, Council and municipal staff have been working on plans and reports aimed at revitalizing

Chapleau's economic situation.

Fortunately, the local Tembec Mill is profitable and still operating. The CPR remains a provider of well-paying jobs. On the other hand, the town's population is shrinking and getting older. The pool of trained workers is dwindling.

When and if the senior branches of government offer grants to struggling, remote communities, Chapleau will be ready to pounce, thanks to the plans and reports that its civil servants have prepared for just

such opportunities.

Besides all this, there are entrepreneurs investigating the use of our surrounding forests for commercial blueberry production, for extracting pharmaceuticals, and for fuelling the bio-mass-fed generation of electricity.

Intense exploration of mineral resources in our immediate area suggests that, in the long run, Chapleau may yet unlock underground wealth that will greatly enhance its prosperity.

In the meantime, Mr. Byham

observed that there was a serious need to re-engage the people of Chapleau to spark up local morale. Since speaking to the Rotary Club, Mr. Byham has appealed through the Chapleau Express to citizens to come forward to sit on boards and committees. There citizens can use their insights and expertise to bring excitement and satisfaction to the young and older folk of Chapleau.

In the Question-and-Answer session that followed Mr. Byham's presentation, Rotarians expressed their feelings that more should be done to convince the youth of the town that Chapleau

is actually a wonderful place to live. Other Rotarians wanted to see pressure put on Bell Canada to upgrade its unsatisfactory cell-phone service in this area so that buyers of the latest electronic communication devices could actually use them. Many Rotarians found it difficult to understand how the mix of market-value assessment and tax rates

apparently produced wildly inconsistent tax bills.

The Rotarians thanked Mr. Byham for bringing his hopes and concerns before them. He and the Council have an intimidating job facing them over the next four years. The Rotarians wished them well and assured the Mayor that they would continue to work for the commu-



Services de santé de
Chapleau Health Services

We are currently seeking qualified candidates for the following position:

2 Part-Time Home Support/Personal Support Workers
(Positions are temporary until March 31st, 2011, at which time they may become permanent)

Reporting directly to the Director of Community Support Services, the positions are responsible for the provision of personal care and household management with the following programs:

- Community Support Services
- Cedar Grove's Aging at Home project

Qualifications:

- Successful completion of a Personal Support Worker course
- Good oral and written skills
- Organization and time management skills
- Experience working with the elderly in a community setting
- Available evenings and weekends
- Bilingualism, French and English, is required
- Valid Ontario Driver's License and own transportation

Interested applicants may submit résumés by January 21st, 2011 at 4:00 p.m. to:

Human Resources
Services de santé de Chapleau Health Services
6 Broomhead Road, P.O. Box 757
Chapleau, Ontario
P0M 1K0
Tel: (705) 864-3061
Email: chapleauhr@sschs.ca

We thank all applicants for their interest, but only those selected for an interview will be contacted.
All applications received will be held strictly confidential.
Cet avis est disponible en français.

Dr. L. R. Simpson
VETERINARIAN
Will be at the Trinity United Church
Monday, January 24th, 2011
FOR APPOINTMENTS CALL
Nadene McEachren at 864-1055
Irs.vet@gmail.com




COURS
GRATUIT!

Microsoft PowerPoint 2007

le lundi 7 février

de 13h à 15h (cours en journée)
de 19h à 21h (cours en soirée)

Pour t'inscrire, appelle le
864.2763 d'ici le 26 janvier!



Get on Track for the New Year! We can help!

OPEN
9 am - noon, 1 pm - 4 pm
Monday through Thursday

Explore your Options!
Possible evenings/Fridays/extended hours

Chapleau
LEARNING CENTRE

FREE
Adult Learning
864-2323

Funded by the Government of Ontario **EMPLOYMENT ONTARIO**

CHS Tree of Lights 2010



Tab, Tiff, Ashley, Leo and
Cindy Paquette
Ben Rodrigue
Leah Cyr
Raymonde Morin
Terry Legge
Paulette MacLeod & Jamaal

Dean Robitaille
Fred & Lorrie Goheen
Regan Hagen
Jim Apsey
Ashley Leach
Krista Leach
Robert, Sylvie & Claudia Serre
Verna Serre
Michael Serre
Joanne Boyle & Family
Libby Glabb
Lil & Gary Scott
Mario & Sylvie Rousseau
Linda Bergeron
Mario Levesque
Nancy Lavoie
John Hoffman
Kelsey-Lynn Lavoie
Henriette Jean

Lise Bernier
Doriane Jones
Patrick & Chantal Hughes
Rachel Rousseau
Mindy Maxwell
Leslie Jones
The Jones Family
Jeanette Bosse

Larry McAmmond

Diane & Norman Delarosbil

Raymond, Debra, Mackenzie,
Emma Portelance
Israel & Nadia Fortin
Grayson, Reilly, Kennedy
Cranney
Tawnya Perry
Antonio Raposo
Tony Ruffo
Rachel & George Rioux
Danielle Prusinowski
Lucy Bignucolo

Jeannine Tremblay
Tuula Korpela
L. P. Morneau
Alvin Byce
Rodney Conroy
Leo & Joyce Vezina
Zack, Autumn, Ethan, Jordan
Alexis Doyle
Lisa & Caroline Ojebah
Steven McWatch & Lisa Gauthier
Teresa Doyle
Evangeline & Simon Barsalou
Evans Family
Trish Hamill
Carole Lafreniere & Tom Sawyer

Mike & Tarja Berthelot

Trudy & Sylvio Bernier

Ethel & Chuck Orton

Emma Hamill

Charley & Katrina Goheen
The Levesque Family
Vicki, Sam, Frank, Joe &
Maggie St. Amand
Ovide Wissell
The Smith's
Terri Robertson
Alanna Scheer
Jennifer Cyr
Rosamond, Will & Tim
Joanne & Rick Ruffo

Therese Dube
Shirley & Howard Goheen

Goheen Families

Willie & Irene Yanta

Paul & Caroline Martel

Pamela, Clayton, &
Ashleigh Boucher

Grandma & Grandpa Paquette
Jeanne Rodrigue
All of my friends and family
Donald Bazinet
Bernard Legge
Brad MacLeod; the twins Kash &
Kye
Sue Constantine
Brenda Swanson
Robert Hagen
Nugget Apsey (honour of)
Hyacinthe Jean
Gamma Bowes
John Serre
John Serre
John Serre
John Serre
Anne Marie
Mom & Dad
Nelson Rousseau
Samantha Levesque
Alice Picody
Samantha Levesque
Edith Wolfe
Kathleen O'Riley
Dr. Young

\$10.00

Deceased Relatives, Bernier & Martel
Yoland St. Pierre
Kevin Hughes; Bill Hughes
Nelson Rousseau; Kevin Hughes
Jackie Rushton; Ken Harman
Ron Jones
Ron Jones
Laurette Piche Bosse; Monique
Brunette
Madeline McAmmond; Ross
McAmmond
Brigitte Delarosbil & other family
members

Randy Martin; Marcel Maurice
Roland Fortin (we miss you, Dad)

Shirley Murphy; Art Murphy
Raino Saari; Laurie Westerman
Pauline Tremblay
Armand & Barbara Ruffo
Valois & Cecile Blais
Diane Gervais; People @ war = peace
Deceased parents (Joe & Anna
Bignucolo); Other deceased relatives
Yvan Tremblay; Pauline Goudreau
Raimo Korpela
L. Clarke; C. Crooks
Shelley & Bette Byce
Robert Conroy
Parents
Duckie
Aunt Macha, Uncle John Doyle
Alfred Tangie; Alice Picody
Richard Lepage; Evelyn Lapointe
John Doyle
Margaret Barsalou; Simon Ouellette
John Doyle
Richard Stewart; Stella & Pete Fila
Anicet & Yvette Lafreniere
Blanche Sawyer "Love & miss you!"
Sinikka Ekoluoma; Joe & Ida
Berthelot
Florence & Fernando Bernier; Joyce
& Pat Burns
Ashley Sweeney; Deceased Family &
Friends
Dr. Frank Hamill; Madelyn
Hamill
Grandpa Fred & Grandma Betty
Kevin Hughes; Bill Hughes

Don St. Amand
Yvon Martel; Denise Martel
My friends and family
Mary Boucher; Monique Brunette
All passed loved ones
David & Marge Lougheed
Ruffo Family - Lacroix Family;
Carole Fournier & Ethier Family
Sylvio Dube & Rachele Peltier
Bonnie (Goheen) Domingue;
Brenda Swanson; Marion (Eveline)
Lafreniere

\$15.00

Nellie & Russell Goheen; Fred
Goheen, Barb & Bill Laronde
Kevin Hughes; Nelson Rousseau
Dan Yantha
Rita Dube; Yvon Martel; Denise
Martel
Nanny & Poppa;
Grandma & Grandpa;

Leona Panamick

Paulette MacLeod

The Lavallee Family

Sheila Hunter
Mark & Pat Mizuguchi

Marie Honkaniemi

Rick & Gabriela Dell

Carolyn Kay &
Ross Hryhorchuk

Melesa & Chris Keech

Doug Collins
Helen White

Rose Mary Fortin

Tracy Martin

Marilyne & Sara Doyle

Robert & Natalie Gouge

Gail Waugh

Rebecca Stephens

Alison Panamick

Marilyn & Calvin Lecuyer

Nicolle Schuurman

Yves & Natalie Gervais
Pauline Dillon

Claire & Rene Henderson

Kelly McRae

Pierre & Shelley Bernier

Linda Robertson & Jim Apsey

Yves & Natalie Gervais

Babsie & Barry McNelly
Jack O'Connor
Melanie Boucher

Jan & Ted Gionet

Stephanie & Gerald Joly

Cheryl & Gerald Boucher

Leona Panamick

Patricia & Scott

Joanne Mione & Claude Lortie

Chapleau Public School Staff

Charles Byce

Jonathon Gionet
Dorothy Reid; Henry Picody; Alice
Panamick
Dad (Dave); Mom Gilberte Turcotte;
Linda Joly; Scott Joly
Roger Minaker (memory); Papa Lou
(memory) Grandma Connie (honour)

\$20.00

Tom Hunter; Jessie (Thomson) Koski
The Groulx Family; Mary Mizuguchi
Anita Pilon; Dr. G. E. Young
Larry Mesimaki; Jaivo Mesimaki
Nancy Smalsic; Toivo Honkaniemi
(Finland)
Fred & Gerda Kuechler; Arnold Dell
Millie Dell (in honour)

Mr. F. Kay; Mr. & Mrs. W.
Hryhorchuk
Bernie Legge; Gertie Legge; Arch
Legge Sr. Leo Larush
Anonymous
Carol Caldwell; Charlie (John)
White; Willie White; Robin White
Tangie Family; Fortin Family; Mione
Family

Judy Fletcher; Alice Picody; Frances
Luhtasaari; Foster & Edna Boucher;
Doug Fraser; Art Martin;
Carol Caldwell
Andrew & Marie Gagnon; Frank
Doyle; John Doyle
France Chevrier; Paul Chevrier;
Frieda Gouge; Pauline Piraglia
Frank & Christine Waugh; Joseph
Larcher; Al Groulx
Phyllis Stephens; Baptiste Memegos;
Judy Fletcher; Ashley Sweeney
Aunt Judy; Nana; Aunt Alice;
Grandma Theresa
Royal Lecuyer; Elizabeth Black
(Lavoie); Christine Lecuyer
(Quakegesic); Alfred Black

Edna Payette; Joan Payette; Bob
Dillman; John Dillman
Jesse Gervais
Desneiges & Bernard Lacasse; James
Dillon & Grandma Turcotte
Laura Charron; Adrien Charron;
Laurie Charron; John Henderson
Ronald E. Prediger; Marjorie Boyd;
Mildred Cassidy; Albert Cassidy
Ina & Frank Coulter; Florence &
Fernando Bernier
Elsie & Paul Massier; Dennis
Massier; Ken Massier
Roland Bouchard; Louise Lepage;
Richard Lepage Diane Gervais

Donald Crooks
Lawrence Pigeon; Doris Pigeon;
Sharyn Schwarz; Bill Walton

\$25.00

Jonathon Gionet; George & Olive
Boucher; Rita Gionet; Lauraine
Swanson; Mary Boucher
Mr. & Mrs. Joly; Mr. & Mrs. O'Riley;
Lynda Joly; Corey Bird; Scott Joly
Eileen & Bill Kennard; Olive &
George Boucher; Don & Vivian
Barkel; Jonathon Gionet; Mary
Boucher
Alice Picody; Theresa Panamick; Ada
Picody; Paul Jackpine; Raven
Panamick

\$40.00

Kenneth (Daddle) Swanson; Brenda
Swanson

\$45.00

Cesare Mione; Maria Arena Mione;
Louis Longchamps; Mike Tangie;
Lena Tangie; Gertrude Lortie;
Antoinette Bordeleau; Odilon
Bordeleau; Jeanne Longchamps

\$50.00

Peter Simpson; Shane Wright; Don
St. Amand

\$100.00

Mr. & Mrs. Herman Kohls; Mr. &
Mrs. Allan Byce, Mr. & Mrs. Harry
Byce; Bobby & Brett Byce, Mr. &
Mrs. R. S. McWatch

\$5.00

In Memory/Honour of

Patricia Swanson
Doriane Jones
Diana & Barry McCartney
Doriane & Leslie Jones
Odette & George Larocque
Denise Cooper
Jane Cooke
Linda Sentek
Daniel Gravel
Ruby Taylor
Eleanor Raposo
Christine Stuckless
Marguerite Castilloux
Ernest Beaudin
Orelia Beaudin
Yvon Gauthier
Josee Demers
Sapphire & Isaac Fortin
Nadia & Israel Fortin
Tamara Cheechoo
Tania Weeks
Carole Grant
Joanne Plourde
Fran Luhtasaari
Carla Guthrie
Tim Kanala
Elaine Brunette
Mrs. Hodgson
Tim Mutter
Serge Fournier
Amy Johnston
Ella Puro
Irene Larcher
Denis Gervais
Toby Hamel
Melanie Wissell
Juvy T. Marquez
Donna Roy & Denis Lortie
Janet Sheppherd
Sharon Saunders
Susie McColeman
Sarah McColeman
Alex Tremblay
Peggy & John McKnight
Tuija & Niina Berthelot
Janet & Arthur Broomhead
Mike, Cheryl & Adam
Courtney Doyle-Evans
Ginette Pelletier
Tammy Kelly
Jeff Hamill
Tanya Keech
Anne & Robert Morin
Nick & Stacey Orton
Susan Lindquist
Keenan MacLeod
Tab & Chad MacLeod
Tab, Chad & Keenan MacLeod

Esther & Bill Swanson
Henry Pilotte
Skit McCartney
Kevin Hughes
Yvonne Poirier
Kenneth & Ruth Campbell
Grandparents
My Family (in honour)
Noel Gravel
Elias James Taylor
Jewels Trudeau
Chester Snook
Germaine Barnes
The Beaudin Family
The Roussy Family
Gerald Gauthier
My Mother, Denise Demers
Grandpapa Fortin
Bonnie Dominique
Tyson Eric George Blueboy
Cynthia Rickard
Thomas Blanchard
My Family (in honour)
Family
Oma Karola Soulueter
Raimo Kanala
Cyril Maurice; Melva Maurice; Alcide Brunette
Douglas Gillies Sr.
Brewster
Richard Lessard
Dr. Young

Joseph Larcher
D. Gervais
Michael McGoldrick; Robert Green
Ovide Wissell
Manolito Marquez
Gertrude Lortie
My Grandmother
Edith McWatch (Grandmother)
Raymond McColeman
Rachel McColeman
Miriam Belanger
Eunice McKnight
Mr. Leo Larush
Annalisa Broomhead
John Blimkie
Aunt Mocha
Raymond & Rachele Pelletier
Megan Woodcock
Alma Bourchardt
All my loved ones that have passed.
Gisele & Adeodat Lavoie
Brett Combdon
Donald Adams
Papa MacLoed (Brad)
Dad (Brad) "Miss you and love you!"
Marj MacLoed "Always in our
hearts!"

La francophonie en folie



DES CARTES DE NOËL



Des élèves de l'école secondaire catholique Trillium préparent des cartes de Noël pour les résidents qui reçoivent les soins de longue durée de l'Hôpital général de Chapleau.



On voit certains de ces élèves accompagnés des récipiendaires de ces cartes très appréciées.

SITE WEB: CANADIENS EN SANTÉ

Le gouvernement du Canada a un nouveau site pour la santé des Canadiens. Il y a plusieurs sections telles que guide alimentaire canadien, guide d'activités physiques, santé et sécurité des enfants, % de la valeur nutritive quotidienne, allergènes

alimentaires, manipulation sécuritaire des aliments, rappels et avis récents. Prenez quelques minutes pour le consulter. Vous allez sûrement trouver des sujets qui vous intéressent.

www.canadiensensante.gc.ca

ACTIVITÉS À VENIR...

- janvier:**
- 15: Composition à 10 chiffres (705)
 - 18-20 Patin (Sacré-Coeur)
 - 21 Journée pédagogique (Trillium et Sacré-Coeur)
 - 21 Atelier de peinture avec Gisèle Therrien de 18h à 21h (Centre culturel)
 - 22 Atelier de peinture avec Gisèle Therrien de midi à 16h (Centre culturel)
 - 23 Vernissage de l'artiste Gisèle Therrien de 13h à 15h (Centre culturel)
 - 24-28 Patin (Sacré-Coeur)
 - 27 Jouez pour l'alphabétisation familiale (Formation PLUS et Sacré-Coeur)
 - 27-2 fév Semaine d'examen (Trillium)
 - 28 Lancer-libre (Sacré-Coeur et Trillium)
 - 31 Ralliement de succès (Sacré-Coeur)
- février:**
- 1 Remise des bulletins (Sacré-Coeur)
 - 2 Spectacle de Damien Robitaille à 19h30 (Centre culturel Louis-Hémon)
 - 3 Rencontre de parents (Sacré-Coeur)
 - 7 Cours « PowerPoint 2007 » de 13h à 15h (Formation PLUS)
 - 7 Cours « PowerPoint 2007 » de 19h à 21h (Formation PLUS)
 - ?? Cours de garde d'enfants (Formation PLUS et Trillium)
 - 8-9 Inscription à la maternelle
 - 10-13 Festival Quand ça nous chante r)
 - 14 Tirage du panier pour les aînés (Formation PLUS)

UN PETIT REGARD SUR L'AN 2010

- janvier**
Exposition « Créativité du quartier »
Lancer-libre au ballon-panier
Cours variés
- février**
Voyage de ski à St-Donat
Programme d'appui aux parents
Tournois de ballon-balai et ballon-panier
Carnaval ce Chapleau et des écoles
Présentation du planétarium mobile
Souper du 35^e du Centrel Louis-Hémon
"PunkyFier" en première
Spectacle d'Éric Larochelle
- mars**
Ski à Kamiskotia et pêche sur glace
Semaines de la francophonie
Pièce de théâtre "Slague"
Exposition de la francophonie
Présentation scolaire - Christian Pilon
Souper-conférence avec C. Pilon
- avril**
Journée de lecture
Foire commerciale
Finales NSSSAA de Badminton
- mai**
Corpus, Corpus - théâtre et danse
Confirmation
Spectacle de David Boisvert
Banquet athlétique et culturel
- juin**
Exposition des 10^e de Trillium
Pièce "Deux tentes et un Winnebago"
Flic & Fric
Remises de diplômes
Bal des finissants
Cérémonie de succès
AGA de F+ et C. Culturel Louis-Hémon
- septembre**
Cours variés
Lancement - programmation du CCLH
BBQ de la francophonie (drapeau franco)
100^e de l'AFO/ACFO/ACFÉO
Marche Terry Fox
- octobre**
Foire d'automne
Spectacle de Patricia Cano
Cercle de lecture et Club de devoirs
Foire des bénévoles
AGA de la CEFC
Bazar d'automne
Élection municipale
Foire d'information pour aînés
Spectacle de Danny Boudreau et Marie-Philippe Bergeron
- novembre**
Artiste-peintre, Walter Pape
Pièce de théâtre « Kiwi »
Magie de Noël
Vente de livres
Bal des chasseurs
Déjeuner paroissial
- décembre**
Train de Noël
Spectacle de Martin Deschamps
Fête de Noël pour les enfants
Bingo paroissial
Bazar de l'Hôpital général de Chapleau
Visite des crèches
Concert de Noël
Dîners de Noël
- Activité mensuelle: ralliement de succès à Sacré-Coeur.
- Nous nous excusons à l'avance pour les activités que nous avons oubliées.

JOUEZ POUR L'ALPHABÉTISATION

Participez au thème de la Journée de l'alphabétisation familiale 2011 et « Jouez pour l'alphabétisation »! Jouez pour l'alphabétisation inclut toutes sortes de jeux qui encouragent la littératie et la numératie : les jeux de société, les jeux de cartes et les jeux de mots ne sont que quelques-unes des activités amusantes qui encouragent la lecture, l'orthographe et l'arithmétique.

Pourquoi jouer?

L'objectif de la Journée de l'alphabétisation familiale est de développer ses connaissances en lecture, en écriture et en mathématiques et de trouver des façons nouvelles et amusantes d'apprendre! Il existe une multitude d'activités qui permettent de pratiquer sa littératie tout en s'amusant, comme

faire une recette, lire une carte routière ou jouer à des jeux de société. Les jeux sont une excellente activité, car ils créent des liens étroits dans la famille, encouragent la compréhension et améliorent les habiletés de lecture.

Quelle activité est planifiée pour Chapleau?

Formation PLUS en collaboration avec l'École Sacré-Cœur organise une soirée familiale de jeux de société en français. Les familles joueront une variété de jeux et tenteront de gagner des prix. Les familles doivent s'inscrire d'ici le 26 janvier pour participer. Le tout se déroulera à l'école le 27 janvier à 19h. On demande aux familles de s'inscrire d'ici le 26 janvier en appelant Formation PLUS au 864.2763.

LA COMPOSITION À 10 CHIFFRES EST ARRIVÉE!

Avec la popularité croissante des nouveaux services de communication, il n'y aura bientôt plus assez de numéros pour répondre à la demande. Ainsi, à compter d'aujourd'hui, le 15 janvier 2011, la composition à 10 chiffres, soit l'indicatif régional suivi du numéro de téléphone, s'appliquera dans les régions desservies par l'indicatif régional 705. La composition à 10 chiffres permettra de préparer le terrain à l'ajout du nouvel indicatif régional 249 et de doubler ainsi le nombre de numéros disponibles dans

la région.

Il est à souhaiter que les consommateurs et les entreprises aient reprogrammé leurs fonctions téléphoniques et appareils de communication pour les rendre conformes à la composition à 10 chiffres.

Pour aider durant la période de transition, si vous ne composez pas les 10 chiffres, un message se fera entendre. À partir du 5 mars 2011, les appels composés sans l'indicatif régional ne seront plus acheminés.

Want to Cut Your Energy Costs and Reduce Your Footprint?

Participate in the NSFC Energy Survey!

FACT: The Northeast Superior Region of Ontario spends an estimated \$25 million annually for the provision of heat and hot water from electricity, fuel oil, propane, and wood.

To help address this issue, the Northeast Superior Forest Community (NSFC), in cooperation with the Northeast Superior Regional Chiefs' Forum (NSRCF), will be conducting a telephone survey to

determine the opportunities for renewable energy solutions in our region. The results of the survey could lead to innovative solutions that might cut energy costs for local residents, businesses, and institutions. Such solutions may affect individual buildings, a group of buildings, or even entire communities. Following the

survey each municipality will be responsible for giving identified energy options further consideration, and for voluntary application. The results of the survey may also point to new industry opportunities for the region, stimulate greater self-sufficiency in energy generation, and contribute to improv-

ing our region's environmental footprint. In essence, the survey is a step in the right direction towards 'going green'.

Over the next few months, the economic development offices from communities throughout the region will be conducting telephone surveys to determine how local businesses,

residents, and institutions currently heat their buildings, and also how they heat their water. Surveying has already begun in Chapleau, and will continue throughout the month of January.

The NSFC urges residents and businesses to contribute to this economic development initiative
Cont'd on P.10

The newly incorporated Chapleau and District Family Health Care Team is currently looking to fill the following position:

Full-Time Registered Nurse

The Chapleau and District Family Health Team (CDFHT) will augment the services currently provided through the Chapleau Health Team Physician Group with a range of services from other health professions, to offer comprehensive primary care for the 2,500 residents of Chapleau and District. It is the CDFHT's mission to improve the health of these people and the community by providing integrated, comprehensive and collaborative primary health care.

The Registered Nurse is an integral member of the Chapleau and District Family Health Team, with significant roles in patient education, patient assessment and follow up, and helping patients with complex needs to navigate through the health care system. Most work occurs in the Chapleau Medical Centre, but some travel within Chapleau and District may be required.

Qualifications:

- A Baccalaureate Degree in Nursing
- Current membership with the College of Nurses of Ontario and professional associations, including the RNAO
- Current certification in CPR (BLS-C)
- A valid Ontario Driver's License and access to transportation sufficient to travel throughout Chapleau and District, as needed
- At least two years of clinical experience working as a Registered Nurse

Experience working in an inter-professional primary care setting is preferred. Teaching experience is considered an asset, as is the ability to communicate in French.

Interested applicants may submit résumés by January 21st, 2011 to:
Chapleau and District Family Health Team
P.O. Box 757
Chapleau, Ontario
P0M 1K0
Attn.: Board Chair
Email: chapleauhr@sschs.ca
Fax: 705-864-0449

We thank all applicants for their interest, but only those selected for an interview will be contacted.
All applications received will be held strictly confidential.
Cet avis est disponible en français.

**GIVE US A CALL
TO BOOK YOUR WINTER
RENOVATIONS OR
NEW CONSTRUCTION
KITCHENS - BATHROOMS
→ Licensed Contractor
→ Licensed Carpenters**

All the coverage the consumer needs!

We have added to our staff!

Need your house painted?
Give us a call....

Leo Panterre
Construction Limited

864-1071



*Huron-Superior Catholic District
School Board*



Come learn, explore and grow in
Catholic Education!

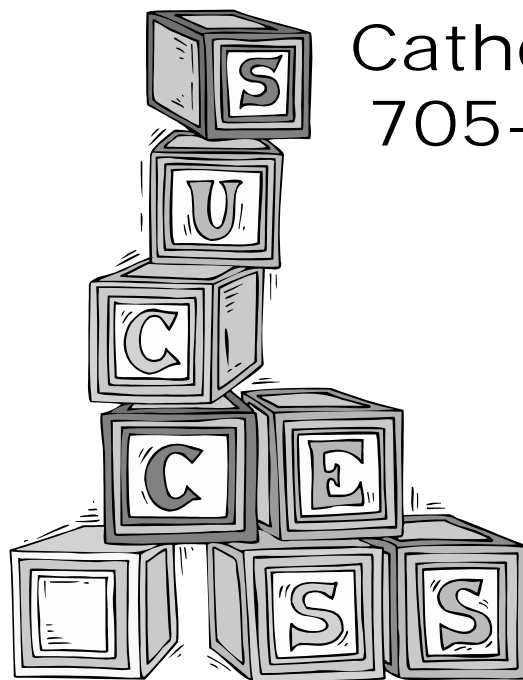


Kindergarten

Registration

January 17-18-19, 2011
Our Lady of Fatima

Catholic School
705-864-1081



www.hscdsb.on.ca

John Stadnyk
Director of Education

Laurie Aceti
Chairperson

IN MEMORIAM

Brenda Swanson Jan. 17, 2010
In loving memory of a dear daughter and wife

The angels sang amazing grace
The Lord came down and touched your face
He held your hand and whispered low
"Come with me, it's time to go."
The gates of Heaven opened wide
The angels stood side by side
A special gift was on his way
The day God took you away

She will always be remembered
Pat & Scott

The newly incorporated Chapleau and District Family Health Care Team is currently looking to fill the following position:

2 PART-TIME RECEPTIONISTS

The Chapleau and District Family Health Team (CDFHT) will augment the services currently provided through the Chapleau Health Team Physician Group with a range of services from other health professions, to offer comprehensive primary care for the 2,500 residents of Chapleau and District. It is the CDFHT's mission to improve the health of these people and the community by providing integrated, comprehensive and collaborative primary health care.

The Receptionist provides reception, medical secretary and transcription services for the Chapleau and District Family Health Team, and maintains the file room and patients' charts in an orderly fashion.

Ideally, the Receptionist holds a diploma as a Medical Secretary from a recognized college or educational facility. However, a combination of an Ontario Secondary School Graduation Diploma, or equivalent, in conjunction with directly related experience may be considered. The Receptionist has previous related experience in a health care setting.

Qualifications

- Perform routine office procedures and clerical duties, and understand medical terminology
- Communicate effectively with patients, physicians and other personnel in order to give and receive information or instructions
- Effectively use computer information systems and software
- Bilingualism, French and English, is required

Interested applicants may submit résumés by January 21st, 2011 to:
Chapleau and District Family Health Team
P.O. Box 757
Chapleau, Ontario
P0M 1K0
Attn.: Board Chair
Email: chapleauhr@sschs.ca
Fax: 705-864-0449

We thank all applicants for their interest, but only those selected for an interview will be contacted.
All applications received will be held strictly confidential.
Cet avis est disponible en français.

Patient Declaration of Values



On June 8, Excellent Care for All 2010, Bill 46, Act, 2010, came into

force. As a result, health care organizations are required by law to have a "Patient Declaration of Values". This is to be created in consultation with the public. Therefore, Chapleau Health Services invites you to send your comments and suggestions on its draft "Patient Declaration of Values" to chapleauhr@sschs.ca. Tell us what you think are a patient's rights. A draft document has

starting point and can be found on our web page, www.sschs.ca, in the article entitled Excellent Care for All Act, 2010.

**CLASSIFIED
ADS
WORK**

KINDERGARTEN HERE I COME!



Chapleau Public School Registration January 18th, 2011

Please call Mrs. Morley at 705-864-1170 for further information.

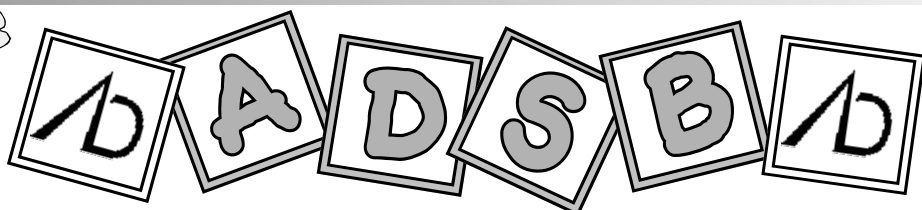
The following information will be required to complete the "Kindergarten Registration Package" for the preschool registration:

- ✓ proof of age - birth certificate, registration;
- ✓ immunization records;
- ✓ doctor's name and phone number;
- ✓ present health conditions, allergies or health concerns
- ✓ name of medication(s) your child is taking;
- ✓ your child's Ontario Health Card Number;
- ✓ child care information (if applicable);
- ✓ emergency and other contact information

New Beginnings

We look forward to meeting you and your child!

Children Born in 2007 may be registered for **JUNIOR KINDERGARTEN**
Children Born in 2006 may be registered for **SENIOR KINDERGARTEN**



ALGOMA DISTRICT SCHOOL BOARD

Mario Turco
Director of Education

www.adsb.on.ca

Wanda McQueen
Chairperson

Jouez pour l'alphabétisation

Participez à une soirée familiale de jeux de société en français!

le jeudi 27 janvier à 19h
à l'École Sacré-Coeur

Pour inscrire ta famille, appelle le 864.2763 d'ici le 26 janvier.

Activité organisée dans le cadre de la Journée de l'alphabétisation familiale.



Participate in the NSFC Energy Survey!

Cont'd from P.8
by taking the time to participate in the survey when they are called. The survey will take just a few short minutes, and all information gathered will be kept completely confidential. The survey is not for

property taxation or property insurance purposes, and the information will only be used for determining how heat is provided in the region and the estimated quantities of energy used annually.

To find out more about the survey

contact the NSFC at (705) 864-2031, or the Chapleau Economic Development Office at (705) 864-1330.

About the Northeast Superior Forest Community

The NSFC is a partnership between six municipalities; Manitouwadge, White River, Hornepayne, Dubreuilville, Wawa, and Chapleau, as well as the Northeast Superior Regional Chiefs' Forum which represents Chapleau Cree, Brunswick House, Michipicoten,

Missanabie Cree, Pic M o b e r t , a n d Hornepayne First Nations. The NSFC is also one of 11 Forest

Community sites funded by Natural Resources Canada's Forest Communities Program, and part of a

network of 15 sites across the country who combine to form the Canadian Model Forest Network (CMFN).



Carol Hughes, MP/Députée
Algoma - Manitoulin - Kapuskasing
Kapuskasing
12 B rue Byng Rd.
1-800-920-2057
NDP + NPD
www.carolhughes.ndp.ca

WORKSHOPS WORKSHOPS WORKSHOPS

OIL PAINTING
with artist Gisèle Therrien

Discover the basic elements to create your masterpiece!

Friday, January 21st from 6 - 9pm
And Saturday, January 22nd from 12 - 4pm
At École secondaire Trillium

Cost: \$30 for both days
Material required: canvas also available with the artist

For registration or more info. call Diane at 864-1126
hemoninc@bellnet.ca




Forest Sector Project Specialist
NORTHEAST SUPERIOR FOREST COMMUNITY CORPORATION

CONTRACT POSITION: 1 Year
SALARY RANGE: \$55,000 - \$65,000
LOCATION: Position will be located in one of our partner municipalities – choice of successful candidate

The NSFC is a partnership between six municipalities; Manitouwadge, White River, Hornepayne, Dubreuilville, Wawa, and Chapleau, as well as the Northeast Superior Regional Chiefs Forum which represents Chapleau Cree, Brunswick House, Michipicoten, Missanabie Cree, Pic M o b e r t , a n d Hornepayne First Nations. The NSFC is also one of 11 Forest Community sites funded by Natural Resources Canada's Forest Communities Program, and part of a network of 15 sites across the country who combine to form the Canadian Model Forest Network (CMFN).

POSITION DESCRIPTION
The NSFC is looking to recruit a new team member to manage forest based projects in the Northeast Superior Region. The NSFC is looking for qualified applicants who will act as a liaison between the Ontario Ministry of Natural Resources, regional forest based industry and other government bodies. Some examples of tasks to be undertaken include implementation of several regional blueberry plantations through either FMP or LUP processes, forest related alternative energy project development and management of a biomass sustainability research project. This position reports directly to the General Manager and works in partnership with several committees and working groups within the region. It is anticipated that there will be some regional travel associated with this position, as head office is located in Chapleau, ON.

QUALIFICATIONS

- Certified Registered Professional Forester or significant work experience in forest management
- Ability to work independently and as part of a team
- Experience with project management, including costing, budgeting and project planning
- Above average communications skills, written and oral
- Bilingualism is an asset
- Experience leading large scale projects
- Clear understanding of OMNR policies and procedures
- Ability to effectively work with government of all levels
- Effective time management and prioritization skills
- Ability to make presentations to large groups and community councils
- (Less qualified applicants may be considered on an underfill basis)

PLEASE SUBMIT RESUME TO:
NSFC c/o Clara Lauziere
12 Birch Street East, Box 1388
Chapleau ON
P0M 1K0
Email: clara.lauziere@nsfc.ca
Fax: 705-864-0435
CLOSING DATE: February 2, 2011




Spécialiste en projet pour le secteur forestier
CORPORATION DES COMMUNAUTÉS FORESTIÈRES
DU NORD-EST DU LAC SUPÉRIEUR (CFNS)

CONTRAT : 1 an
ÉCHELLE SALARIALE : 55,000\$ - 65,000\$
LIEU : Le poste sera situé dans l'une de nos municipalités partenaires – au choix du candidat retenu.

Le CFNS est un partenariat entre six municipalités; Manitouwadge, White River, Hornepayne, Dubreuilville, Wawa et Chapleau, ainsi que le Forum régional des Chefs des Premières Nations qui représente les Cris de Chapleau, Brunswick House, Michipicoten, Cris de Missanabie ainsi que les Premières Nations de Pic M o b e r t et Hornepayne. Le CFNS est également l'un des 11 sites du programme des collectivités forestières financés par Ressources naturelles Canada et fait partie d'un réseau de 15 sites à travers le pays qui se combinent pour former le Réseau canadien de forêts modèles (RCFM).

DESCRIPTION DU POSTE
Les Communautés forestières du nord-est du Lac Supérieur cherchent à recruter un nouveau membre d'équipe pour gérer des projets forestiers pour la région du nord-est du Lac Supérieur. Le CFNS est à la recherche d'un candidat qualifié qui agira à titre d'agent de liaison entre le ministre des Ressources naturelles de l'Ontario, l'industrie forestière régionale et d'autres organismes gouvernementaux. Quelques exemples de tâches à entreprendre comprennent la mise en oeuvre de plusieurs plantations régionales de bleuets par le biais des procédés de FMP ou LUP. Des projets ayant trait au développement de projet d'énergie alternative reliée à la foresterie et la gestion d'un projet de recherche sur la durabilité de la biomasse. Ce poste se rapporte directement à la Directrice Générale et travaille en partenariat avec plusieurs comités et groupes de travail dans la région. Il est prévu qu'il y aura une variété de déplacements régionaux associés à cette position, étant donné que le siège social est situé à Chapleau, ON.

APTITUDES

- Forestier spécialiste certifié et inscrit ou expérience de travail significative dans la gestion forestière
- Capacité à travailler de façon autonome et en équipe
- Expérience en gestion de projet, y compris les coûts, la budgétisation et la planification des projets
- Compétences au-dessus de la moyenne en communication écrite et orale
- Le bilinguisme serait un atout
- Expérience en direction de projets à grande échelle
- Une compréhension claire des politiques et des procédures du MRN
- Capacité à travailler avec le gouvernement affectivement à tous les niveaux
- Bonne gestion du temps et compétences à prioriser
- Habileté à faire des présentations à de grands groupes et à des conseils communautaires
- (Les candidats moins qualifiés pourront être considérés sous-classement)

S'IL VOUS PLAÎT FAITES PARVENIR VOTRE CURRICULUM VITÆ à:
NSFC a/s Clara Lauzière
12, Birch Street East C.P. 1388
Chapleau ON
P0M 1K0
Courriel: clara.lauziere@nsfc.ca
Télécopieur: 705-864-0435
DATE LIMITE: 2 février 2011

THE LOCAL MARKET PLACE THE LOCAL MARKET PLACE

CHADWIC HOME, FAMILY RESOURCE CENTRE
Offers shelter, emotional support, and information for women and their children who are in crisis situations. We have a Toll Free Crisis Line which is staffed 24 hours a day. We can arrange for free transportation to the Centre for women who live in the Algoma/Chapleau area. We also offer support to women who live in the communities of Chapleau, White River, Dubreuilville, and Horne-payne through our Outreach Program. Our Outreach Worker travels to those communities to meet with women who need emotional support as well as information about their rights and options. If you need to speak with the Outreach Worker when she is in your community, you can call the Centre at any time to set up an appointment. You do not need to be a resident of the Centre in order to use our services. If you need someone to talk to or if you just need someone to listen, call our Toll Free Crisis line at 1-800-461-2242 or you can drop in at the Centre. We are here for you.

ALCOHOLICS ANONYMOUS Offers help to anyone who desires to stop drinking. Open discussion meeting on Sundays at 2:00 p.m. Trinity United Church basement. Telephone contacts: 864-2786

ALCOOLQUES ANONYMES Offre de l'aide à celui ou celle qui désire arrêter de boire. Les rencontres ont lieu tous les mercredis soirs à 19h (7:00 p.m.) Au sous-sol de l'église Sacré-Coeur. Téléphonez au 864-2786

Narcotics Anonymous offers help to anyone who desires to stop using drugs. Meeting every Thursday 7:30 p.m. Saturday 8:30 p.m. basement Sacred Heart Church. Telephone contact 864-2786.

Alcoholics Anonymous (A.A.) Open discussion meeting every Monday evening. Brunswick House First Nation Band office lounge 7pm. **Narcotics Anonymous(N.A.)** every Tuesday same place same time. NNADAP Worker @ 864-0174 info.

Société Alzheimer Society meetings will be held at the Chapleau Hospital every 1st Monday of each month starting from 7:00 p.m. to 9:00 p.m.

APARTMENTS FOR RENT

Large 1 bedroom apt. centrally located, fridge and stove included, washer/dryer hook up. Call 864-0677. Leave message. Jan15

2 bedroom apt. available Dec. 1, 2010 & Jan. 1st, 2011. Call 864-2282. Jan29

Fully furnished one-bedroom apartment in downtown area. Available February 1. Daily, weekly, monthly rates available. Call Sylvie Sylvestre at 864-9062 after 5pm.

FOR SALE

4 winter tires used 215-55-17 1 pike winter studded. \$500.00. Call Roch's at 864-1477.

PROPERTY WANTED

Quiet, down to earth Fisherman that respects the north and admires the small community spirit is seeking a property with or without cottage/camp on an excellent walleye fishing system. Up to \$100,000.00. Please call Ken @ 705-732-2036 or ronm@zeuter.com Feb26

ADS AND ADVERTISEMENTS FOR THE CHAPLEAU EXPRESS WILL BE ACCEPTED AT

DENISE'S FLOWER SHOP

SLIDE SHOW PRESENTATION of the November 2010 Haiti Mission Trip
Chapleau Pentecostal Church
Sunday, January 16, 2011 at 7:00 p.m.
EVERYONE WELCOME
"FREE ADMISSION"
For more information call 864-0828
COFFEE AND DESSERTS

FREE SKATING MOMS & TOTS MONDAY TO FRIDAY 10AM-NOON
PATINAGE GRATUIT MOMS & TOTS LUNDI AU VENDREDI 10h00 - 12h00
www.chapleau.ca

THANK YOU MERCI
I wish to sincerely thank the following people for their assistance last January 6th during a medical emergency, including Betty Ann Turcotte, the Redwood staff & customers, ambulance attendants, doctor Brière & hospital staff.
Je tiens à remercier les personnes qui m'ont secourue lors d'une urgence médicale le 6 janvier dernier, y compris Betty Ann Turcotte, le personnel et les clients du restaurant Redwood, les ambulanciers, le docteur Brière et le personnel infirmier de l'hôpital.
Hélène Pineau

CLASSIFIED ADS WORK

ALL ADS ARE ACCEPTED AT THE CHAPLEAU INNOVATION CENTRE
DEADLINE FOR RECEIVING ADS IS WEDNESDAY 4:00 p.m.
CLASSIFIED ADVERTISING RATES
Regular Classified Ads
First 25 words or less \$6.25
Each additional word \$0.16+GST
No refunds on cancelled classified ads.

BERRY'S FREIGHT SERVICES
TIMMINS - CHAPLEAU - TIMMINS
MONDAY TO FRIDAY
1lb. to 10,000 lbs.
FOR QUALITY SERVICES AT INEXPENSIVE PRICES
GIVE US A CALL AT
1-705-264-4334

Have a Good Weekend

SLOMA CLEANERS
Drop off at Between Friends (Cedar Grove)
Mon to. Fri. 8 am-noon and 1-4 pm

Alain Bouffard
Sales Representative
61 Mission Road
Wawa, Ontario, P0S 1K0
Tel: 705-856-2394
Fax: 705-856-4290
alainbouffard@missionmotors.com

MISSION MOTORS
NEW & PRE OWNED VEHICLE SALES
GOODWRENCH SERVICE CENTER
PONTIAC, GM, GME, CHEVROLET

ALLEMANO & FITZGERALD
Barristers and Solicitors
MICHAEL C. ALLEMANO, B.A., L.L.B.
Certified by the Law Society as a Specialist in Real Estate Law
P.O. Box 10, 369 Queen St. E. Suite 103, Sault Ste. Marie, Ontario P6A 1Z4
Phone (705) 942-0142 Fax (705) 942-7188
P.O. Box 1700, 55 Broadway Avenue, Wawa, Ontario P0S 1K0
Phone (705) 856-4970 Fax (705) 856-2713

Northern Lights Ford Sales
Andrew G. McKenzie
11 Years of Service
Highway 17, North
P.O. Box 1033
Wawa ON. P0S 1K0
Bus: 705.856.2775
Fax: 705.856.4862
sales@northernlightsford.ca

LVP LABERGE VEYNE & PARTNERS
Professional Services to Northern Ontario for 25 years
Financial Statements for Small Business & Corporations
Tax Returns - Personal, Corporate and Trust/Estate
Personal, Retirement, Estate Financial and Tax Planning Strategies
Business Projections, Plans and Financial Proposals
Computer Consulting
ACCPAC and Quickbooks
1970 Paris Street, Sudbury, Ontario P3E 3C8
(705) 523.0272 (800) 581.7510 www.lvpartners.ca

MISSION MOTORS
Vehicle of the Week
2007 Pontiac Vibe Hatchback
61 Mission Road, Wawa, ON, P0S 1K0
Phone (705) 856-2394
Price: \$12,999.00
Odometer: 45,000km
Interior Colour: Black
Engine: 4 cylinder Gas 1.8 L
Fuel: Gasoline
Stock #: 1095U
Body Style: HATCHBACK
Exterior Colour: SALSA (DARK RED)
Doors: 4 Door
Transmission: Automatic
Drive: Front Wheel Drive
Description: THIS LIL GEM HAS LOW KM WITH GREAT OPTIONS! --- COME IN FOR A TEST DRIVE TODAY! --- AUTOMATIC---4 CYLINDER GAS ENGINE--- AIR CONDITIONER---CRUISE CONTROL---KEYLESS ENTRY---POWER LOCKS---POWER WINDOWS---LUGGAGE RACKS---CD PLAYER/AM/FM RADIO--- 16" TIRES---

LVP LABERGE VEYNE & PARTNERS
25 ans de service professionnels pour les entreprises du Nord de l'Ontario
États financiers pour petites et moyennes entreprises et corporations
Rapports d'impôts personnel, de compagnie et de fiducie
Planification financière et fiscale personnelle et de compagnie
Projections financières, plans d'affaires et propositions de financement
Consultation en informatique
ACCPAC et Quickbooks
1970 rue Paris, Sudbury, Ontario P3E 3C8
(705) 523.0272 (800) 581.7510 www.lvpartners.ca

NEW AT THE CHAPLEAU PUBLIC LIBRARY
NEW BOOKS
Broken - Karin Slaughter - Heresy - S. J. Parris
Try Darkness Book 2 - James Scott Bell
Try Fear Book 3 - James Scott Bell
The Source of Miracles - Kathleen McGowan
The Ultimate encyclopedia of Knots & Ropework - Geoffrey Budworth
NEW HOURS
Monday, Tuesday, Thursday 12-8 p.m., Wednesday and Friday 1-5 p.m.,
CLOSED Saturday and Sunday

BODYLINES BY CRACK LTD.
-5 Licensed Bodymen
-Insurance Claims
-Windshield Repairs and Replacement
-State of the Art Frame Machine
ALL WORK GUARANTEED
PLEASE CALL 705-856-1406

Le Pouvoir d'apprendre

Sais-tu que tu as le *pouvoir*...

... d'apprendre pour améliorer ton milieu de travail, ta vie, et ta communauté?

... d'augmenter tes chances à trouver un meilleur emploi ou garder celui que tu as?

Appelle FormationPLUS dès aujourd'hui au 864.2763 pour t'inscrire à un ou des cours.

Au plaisir de te voir!



EDUCATIONAL ASSISTANT (Casual positions- Chapleau area)

The Algoma District School Board invites applications from qualified applicants for casual Educational Assistant positions in the Chapleau area.

Post Secondary Education preferred in one of the following:

- Child and Youth Worker
- Teaching Assistant
- Developmental Service Worker
- Early Childhood Education

Successful candidates will have good communication skills, sensitivity to confidentiality, ability to relate to children and adults and to work in a team environment. Preference will be given to applicants with experience working with exceptional students.

Please forward your resume and covering letter with 3 references by 4:00 pm, Friday, January 21, 2011 to:

Jane Breckenridge, Human Resources Officer
Algoma District School Board
644 Albert Street East
Sault Ste. Marie ON P6A 2K7
Fax: 705-945-7224

Please note: A security check is a requirement of the hiring process. (Only those applicants short listed will be contacted)

ALGOMA DISTRICT SCHOOL BOARD
Reaching to the Future
www.adsb.on.ca

Mario Turco
Director of Education

Wanda McQueen
Chairperson

PRE INVENTORY CLEARANCE SALE

5 pc. Dining Room Set, features OAK WASH DINING TABLE WITH 4 SIDE CHAIRS
 REG. \$2929.95
 Pre-Inventory Price
\$1499.99

Bi-Cast Brown Leather Sofa
 REG. \$724.99
 Pre-Inventory Price
\$499.99

Slate Cord Chair
 REG. \$1159.99
 Clearing at only
\$599.99

Coffee Impala Leather Chair
 REG. \$939.99
 Clearing At Only
\$469.99

Soho Pine Sofa Table
 REG. \$629.99
 Clearing At 1/2 Price
\$314.99

Soho Pine sliding doors Cabinet
 REG. \$1449.99
 Clearing 1/2 Price
\$724.99

Black Cocktail Table
 REG. \$699.99
 Pre-Inventory Clearing Price
399.99

Round End Tables with Glass Top
 REG. \$444.99
 Selling At Only
\$229.99

ASSORTED HOUSEWARES, COOKWARES AND SMALL APPLIANCES
CLEARING AT 1/2 PRICE

All sale items CASH AND CARRY
Sale ends Wednesday Jan. 19 2011



29 Birch St. East

864-1030



51 Birch St. East