

Talk about good coffee!

Miss Muggins  
Coffee and  
Fresh Donuts



# CHAPLEAU EXPRESS

Vol. 15, Issue 24, February 26, 2011

PIZZA HUT & KFC  
There's a Reason  
We're Number 1  
"0 TRANS FAT"  
864-0911



## Collège Boréal's Applied Research Division Supports Forest Industry



From left to right: Lynne Lamontagne, Director, Teaching and Learning Support Services, Collège Boréal; Wade Cachagee, President, Niska North Inc.; Kevin Lindquist, General Manager, Niska North Inc.; Matthieu Desbois, 3rd year student in Collège Boréal's Technologie du génie chimique program; Alain Larocque, coordinator of Collège Boréal's Technologie du génie chimique; Janet Broomhead, Economic Development Specialist, Township of Chapleau; Charley Plourde, Science & Technology Liaison Officer, Township of Chapleau.

By Benoît Clément

Collège Boréal's Applied Research division yesterday unveiled a new prototype designed to make use of wood residues produced by forest harvesting activities. Developed in partnership with forestry company Niska North Inc. and the Township of Chapleau, this prototype will initially be used to extract various

essential oils from wood chips. It was designed by Matthieu Desbois, a 3rd year student in Collège Boréal's Technologie du génie chimique (Chemical Engineering Technology) program, as part of the Research Project course.

The President of Niska North Inc., Wade Cachagee, underlines the promising applications associated with this applied research project: "This partnership with Collège Boréal and the Township of Chapleau allows us to explore an ingenious idea, to evaluate its implementation and to produce a prototype specially designed for the equipment in our sawmill. Thanks to

Collège Boréal's innovative approach, our company is now able to consider new avenues of growth."

The Mayor of Chapleau, André Byham, also sees this initiative as a means to diversify his region's economy: "Optimizing the use of all the resources accessed by the forestry industry is a rational strategy to bolster the economy in municipalities that depend on this industry. For us in Northern Ontario, bringing together Collège Boréal's expertise in applied research and Niska North's expertise in forest harvesting is a key component to help strengthen the economy of our region."

Small and medium enterprises

have much to gain from the expertise and equipment Collège Boréal has to offer, as Boréal's participation in Colleges Ontario Network for Industry Innovation (CONII) further indicates. Daniel Giroux, Collège Boréal's Academic Vice-President, points to the concrete benefits of this collaboration between the private sector and the province's community colleges: "Our applied research projects aim to significantly enrich our students' training by providing a learning experience based on current technology while also supporting the development of our region's SMEs with contributions by our highly qualified professors, our future



graduates and our state-of-the-art equipment. This winning combination allowed Collège Boréal to deliver this prototype after just six months of research and production."

Alain Larocque, coordinator of the Technologie du génie chimique program and Matthieu Desbois' professor, emphasizes the expertise his student has acquired over the course of this project. "To produce this prototype, a wide knowledge of chemi-

cal engineering was required. The outcome of this applied research is typical of expectations in field of chemical engineering, where research, analysis and the production of prototypes are often part of the tasks entrusted to professionals in this sector. I am particularly proud that Matthieu has done so well in this project."

Matthieu Desbois is himself from Chapleau and he will have completed his education at Collège Boréal in April.

### Long Term Forecast

#### Friday

High -13  
Low -20



#### Saturday

High -9  
Low -23



#### Sunday

High -5  
Low -17



#### Monday

High -6  
Low -11



#### Tuesday

High -8  
Low -16



#### Wednesday

High -7  
Low -16



come in with a problem,  
come out with a smile :)

FREE BRAKE INSPECTION

AND

SERVICE SPECIAL

Oil Change & Service on your Vehicle

ONLY \$24.95

(Oil and filter not included)

See Rick our Licenced Mechanic



Visit our website at [www.northernhaul.com](http://www.northernhaul.com) for a list of our services!

## LETTERS TO THE EDITOR

### 'This is a letter sent to the town council

Claire Charron,  
P.O.Box  
Chapleau, ON P0M 1K0

Mr. André Byham,  
Mayor  
Members of Town Council  
Municipality of Chapleau.

Sirs, ladies:

This letter concerns the conflict of interest in the minutes of Jan. 10, 2011, whereby Councillor Rose Bertrand nominated her spouse Graham Bertrand to serve on the Board of the Chapleau Utilities, to which she had been previously appointed. This action placed her in flagrant conflict of interest.

Rose Bertrand's motion was seconded by councillor Lisi Crichton-Bernier, who should have refrained from voting, since she was certainly aware of the fact that Graham Bertrand is the spouse of councillor Rose Bertrand.

Both councillors, Mrs. R. Bertrand and Mrs. L. Crichton-Bernier, proceeded to vote on that motion. On candidate's night in 2006, Mrs. Rose Bertrand was forewarned about finding

herself in conflict of interest, each time a family member was involved, but today, the actions of Councillor R. Bertrand demand that she vacates her seat on council for the balance of her term ending in 2014. Councillor Lisi Crichton-Bernier should get a deduction of remuneration for a period of three months for her action in this matter. Council members are remunerated for their services, yet ratepayers are held totally responsible to oversee and detect or declare irregularities in council or municipal affairs.

We ratepayers feel we should be able to trust our elected council to show integrity in their actions.

Therefore, the request to retain or reduce remuneration from councillors in conflict would be a real incentive for them to realize the impact of their actions.

Respectfully,

Claire Charron.

cc. a/s Mr. Bryan Searle, Ministry of Municipal Affairs, Sudbury  
cc. Chapleau Express

# World Day of Prayer 2011

On Friday, March 4, 2011, the women of Chile invite us to reflect on the many gifts that God has given each of us – and our call to share those gifts. Join with them in the World Day of Prayer celebration as we ask a question that draws us into the bible, into the real context of Chilean lives and communities. There are several steps we will take together as we address the question asked in the theme: How Many Loaves Have You?

The Republic of Chile stretches between the Pacific Ocean and the Andes Mountain Range in the extreme southwest of South America. It borders to the north with Peru, Bolivia and Argentina to the east,

with Antarctica to the south and the Pacific Ocean to the west.

In the 16th century Spanish explorers came to Chile and went on to conquer it, although there was strong resistance from the indigenous peoples, especially the Mapuches in the south. The conflict went on for four centuries and continues even today with disputes about the ownership of their lands. Chile began its independence on September 18, 1810, the date established as "National Independence Day."

Please join us, and invite your friends and family to attend the World Day of Prayer service and learn more about Chile and its

unique culture and heritage. Join Christians in more than 170 countries around the world and 2,000 communities across Canada who will gather on the World Day of Prayer to pray and act in solidarity with the people of Chile.

A local World Day of Prayer service will be held at: Trinity United Church, Friday, March 4, 2011, 7:00pm. For information on the WDP service in this community, please contact: Debbie (705)864-0688

### The Chapleau Express

P.O. Box 457  
Chapleau (Ont.) P0M 1K0  
Telephone - Fax : 705-864-2579  
e-mail : chaexpress@sympatico.ca  
Published every Saturday/Sunday  
Deadline for receiving ads is Wednesday at 4 p.m.

The Chapleau Express is delivered free of charge to every household each Saturday. If you have any comments, please feel free to contact us. Subscriptions: \$80.00 per year (Canada) \$150.00 U.S per year (U.S.A) Canadian Publications Products Sales Agreement #30183799

### GOING TO CHURCH

Catholic Church  
**SACRED-HEART OF JESUS PARISH**  
PAROISSE SACRÉ-COEUR DE JÉSUS

26 Lorne Street North  
OFFICE- 21 Lansdowne St.N.  
864-0747

New Schedule Effective Nov. 7/09  
Nouvel horaire à compter du 7 nov/09

Sat/sam 7 p.m. (E or F)  
Sun/dim 9:30 a.m. (F or E)  
Weekdays/Semaine lun-ven 9:30 a.m.  
Wed/Mer (Hosp) 11:30 a.m.  
Fr. Sébastien Groleau

**ST. JEAN DE BRÉBEUF (Sultan)**

Liturgy of the Word  
Liturgie de la parole  
Mass 3rd Sunday  
Messe 3e dim 12:00 Noon (B)  
Permanent Deacon  
Diacre Permanent  
Ted Castilloux

Diocese of Moosonee  
Anglican Church of Canada

**ST. JOHN'S CHURCH**  
4 Pine Street West  
864-1604  
Sunday Service  
10:30 a.m.  
Rev. Bruce Roberts

**ST. MARY'S ANGLICAN CATHOLIC CHURCH**

78 Devonshire Street  
864-0909  
Sunday Service 10 a.m.

**CHAPLEAU PENTECOSTAL CHURCH**

9 Elm Street (P.A.O.C.)  
864-0828  
Sunday 10:30 a.m. & 7 p.m.  
Wed. Family Night 7-8 p.m.  
Fri. Story Hour  
3:30-4:30 p.m.  
Pastor Dan Lee

**TRINITY UNITED CHURCH**

Corner of Beech and Lorne  
864-1221 Sunday Service and  
Sunday School 11:00 a.m.  
Anna Chikoski  
Soup Kettle every 2nd Wednesday  
of the month

www.angelfire.com/on/trinityuc

**OUR LADY OF SEVEN SORROWS PARISH**  
PAROISSE NOTRE-DAME-DES-SEPT-DOULEURS (Foley)

Liturgy of the Word  
Liturgie de la Parole  
Mass 2nd-4th Sunday/  
Messe 2e-4e dim 12:00 Noon (B)

**COMMUNITY BIBLE CHAPEL**

Corner of King and Maple  
864-0470  
Communion Service 9:30  
Family Bible Hour 11 a.m.  
Including Sunday School  
Evening Bible Study and  
Ladies Bible Study  
during the week  
Transportation available  
Al Tremblay

### AVIS DE DÉCÈS

Roger Turbide



Décédé aux Services de Santé de Chapleau mercredi le 9 février, 2011, à l'âge de 79 ans avec sa famille à ses côtés. Mari bien-aimé de feu Georgiana. Père aimé d'Alain (Debbie),

Claude (Brenda), André (Tammy), Ghislain et René. Fier grand-père de Patrick, Shayna et Talia. Frère tant-aimé de John, Paul, Dolo, Cecile, Marie, Denise, Joe et précédé par 7 frères et soeurs. Roger sera aussi manqué par ses frères et ses belles-soeurs ainsi que ses nièces et neveux. Une messe a été célébrée à l'Église Sacré-Coeur, lundi le 14 février à 11h00 par le Père Sébastien Groleau. Pour ceux qui veulent, des dons commémoratifs faits à la Société canadienne du cancer ou à l'hôpital général de Chapleau seront appréciés par la famille. Pour plus renseignements veuillez appeler la Maison Funéraire Gilmartin, Wawa 1-800-439-4937.

# EMPLOYMENT ONTARIO

Centre d'emploi de  
Chapleau Employment  
Resource Centre



# EMPLOI ONTARIO

- Job Bank / Internet
- Resume writing
- Assistance with job search
- Second Career

- Guichet d'emploi / Internet
- Résumé (curriculum vitae)
- Recherche d'emploi
- Deuxième Carrière

Come and see us at  
34 Birch Street,  
Chapleau

**705-864-0430**  
Everyone is Welcome



Conseil des Services du District de  
**Manitoulin-Sudbury**  
District Services Board

Venez nous voir au  
34 rue Birch, Chapleau  
**705-864-0430**  
Tous sont bienvenue

# 'Senseless acts' of hockey violence an issue 36 years ago in controversial Northland Intermediate Hockey League playoff series between Chapleau Huskies and Timmins North Stars

## Chapleau Moments

by Michael J. Morris



Whenever the violence in hockey issue reaches a fever pitch as it has again recently with comments from Mario Lemieux, a star of the game and now owner of the Pittsburgh Penguins, I go back to February 22, 1976, a Sunday afternoon at the McIntyre Arena in Timmins, where the Chapleau Intermediate 'A' Huskies were playing the Timmins North Stars in the Northland Intermediate Hockey League semi-finals.

The Huskies were in their first NIHL season, had squeaked into the fourth and last playoff position but were ahead of the North Stars, the first place finishers three games to one.

For those readers who will not remember those days, I was the coach and manager of the Hus-

kies as well as serving as reeve of Chapleau.

At the opening face-off I noticed that the North Stars were starting the game with five defencemen on the ice which for a moment seemed strange to me, I started with the line of Pat Swanson, David McMillan and Jamie Doyle who were leading the series in accumulated points. At the first stoppage of play I changed lines putting out George Swanson, Jean Claude Cyr and Raymond Larcher.

Then it began. George headed into the North Stars defensive zone where he received injuries that resulted in him leaving the game and taken to hospital for treatment of a broken shoulder.

Within five minutes Dave McMillan took a high stick to the face, fell to the ice, was bleeding

and taken to the dressing room. No penalty was called and he did not return to play in that game.

It didn't take me long to figure out that the North Stars game plan was to intimidate us, although in a report on the game in the Timmins Daily Press, it was described as "aggressive tactics."

In the third period, Doug Prusky suffered a broken ankle after being attacked by a Timmins player who received a minor penalty for interference. Doug was taken to hospital. Richard Lacroix suffered a leg injury in the third period and insults were hurled at other players.

The Huskies lost the game 9-6 which resulted in a Daily Press headline "Stars Hammer Chapleau..." the understatement of all times.

I went to St. Mary's Hospital after the game and saw Doug and George.

I talked with Bill Moffat, the manager of the North Stars and advised him that I would consider the possibility of having criminal charges laid. Needless to say I was furious, but also deeply concerned about my players so I decided to stay in Timmins overnight and assess the options.

In due course I sent a night letter to the Attorney General of Ontario, Roy McMurtry, seeking advice on the possibility of undertaking criminal proceedings against a player or players of the Timmins North Stars as a result of the alleged incidents in the game.

I also advised

James Aspin, secretary manager of the Northern Ontario Hockey Association and Donald Dewsbury, president of the NIHL, and returned to Chapleau, where the municipal council would address the matter before a sixth game was played at the Chapleau Memorial Community Arena.

After much debate, in which I did not participate, council agreed that the game could be played, but with a large police presence. That happened, and more than 1,400 fans packed the arena for the game.

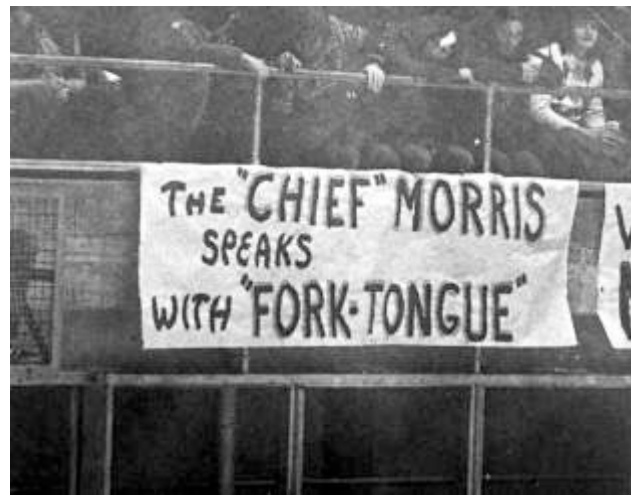
Despite a truly valiant effort by the Huskies, we lost the series, and to this day, I have the utmost respect and admiration for each of those players who did their best to win it.

When we returned to Timmins for game seven, large banners greeted us, mostly focussed on me.

Why did I take such action?

Here is what I said 36 years ago on February 26, 1976: "I believe I had no alternative. While I recognize that hockey is a physical contact sport, the point is reached when senseless acts of violence can no longer be tolerated without taking action.

"There are those who will dismiss the incidents as an aggressive brand of hockey, but when two players are hospitalized with serious injuries, and others forced to leave a game, and verbal abuse occurs, then I would submit that a most serious situation has developed."



"Chief" was Michael's nickname, given to him by Chapleau hockey players who did not want to call him "Mr. Morris"

William McMurtry, the brother of the attorney general, had written a report on violence in hockey in 1974. I have looked again at the major recommendations and don't think much has changed.

Three members of the North Stars were subsequently charged with assault but were found not guilty.

Notwithstanding the situation that developed at the end of the first year in the NIHL, the team held its first awards banquet with Doug Prusky as master of ceremonies, and honoured several players.

Goaltender David McAdam was named Most Valuable Player having played in all the 32 regular season games and the playoffs. In making the presentation, Keith "Buddy" Swanson said "every hockey team has a backbone and on this team it is David McAdam." He won the Wesmak Lumber Trophy.

Jamie Doyle, who was in his first year at Wilfrid Laurier University, and travelled home to play was named Most

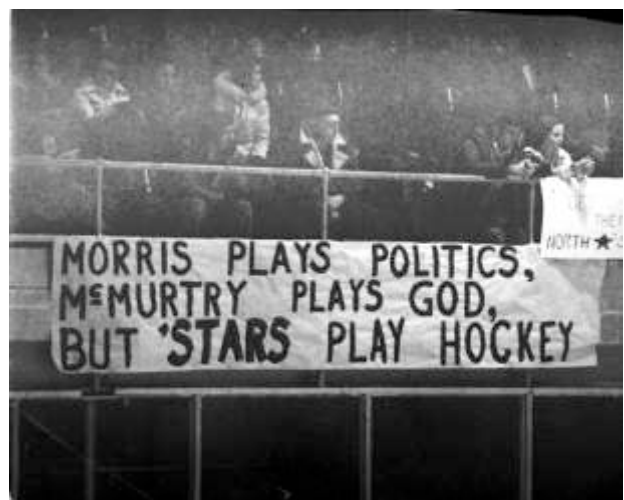
Valuable Player in the Playoffs. Jamie had 14 goals and 12 assists, including a league record six goals in a single game. Jim Young, the Timmins goaltender told me later, that "Jamie turned on the red light behind me so many times that I had a sunburn on my neck."

Richard Lacroix, the team captain and leading scorer was named Rookie of the Year -- all players were eligible and rookies. Richard was another player who never missed a game all year. Ross Barlow and Steve Ward had donated a trophy. Richard also won the Leading Scorer award with 33 goals and 18 assists, the fourth highest in the league.

Ted Swanson, another player who also never missed a game was presented the Sportsman Hotel Trophy as Best Defenceman by Jack Houle.

Good luck to Mario Lemieux.

"plus ça change, plus c'est la même chose," as Jean-Baptiste Alphonse Kar wrote in 1849. My email is mj.morris@live.ca



"McMurtry" was Roy McMurtry the attorney general of Ontario. Banners were in McIntyre Arena, a welcome from Timmins fans.

 <p><b>Ontario</b> Licenced Motor Vehicle Inspection Station</p>		<p><b>Chapleau Cree Auto/Truck</b> Monday - Friday 8:30 a.m - 4:30 p.m. "Preventive Maintenance keeps you on the road" <b>FOX LAKE RESERVE</b></p>	<p><b>CALL</b> <b>864-9090</b> for an appointment</p>
-----------------------------------------------------------------------------------------------------------------------------------------------------------------	-------------------------------------------------------------------------------------	--------------------------------------------------------------------------------------------------------------------------------------------------------------------	-------------------------------------------------------------------

# Diabetes – What You Need To Know

## What Is The Hemoglobin A1c Test?



By Robin Greer, RD, CDE and Krista Frederiksen, RN

The hemoglobin A1c (HbA1c) test shows if a person's blood glucose (sugar) is close to normal or too high. It is the best test for a health care provider to tell if a person's blood sugar is under control. How does this test work?

Hemoglobin is a protein inside your red blood cells. It is the part of the red blood cell that carries oxygen from your lungs to the rest of your body. Hemoglo-

bin also carries glucose, because glucose can stick to all kinds of proteins in your body. Once glucose sticks to the hemoglobin, it is stuck there for the life of the red blood cell, about 3-4 months. The more glucose there is in your blood, the more will end up stuck to the hemoglobin.

A1c is a measure of the amount of glucose that is stuck to your hemoglobin. Your A1c reading tells you and your health care team what your average blood glucose level has been over the last two or three months. If you have lots of glucose in your blood and your average blood glucose has been high for the past few months, then your A1c will be high.

This chart is an example

of how blood glucose compares to A1c. The numbers in this chart are for non-pregnant adults.

The HbA1c is a blood test that is most often done at the hospital lab. It can sometimes be done at an office visit with your diabetes educator. You should talk to your health care team about your daily blood glucose tests AND your A1c results.

**D i a b e t e s –What You Need To Know** is an informative column that is meant to provide you with valuable information about how to prevent and manage diabetes. If you have a question that you would like us to answer, call us at 864-0210 or e-mail [rgreer@sschs.ca](mailto:rgreer@sschs.ca)

A1c Reading	Average Blood Glucose Level	Your Blood Glucose Management
14%	20 mmol/L	Very poorly managed, take immediate action to lower
10%	13.3 mmol/L	Poorly managed, take action to lower
9%	11.6 mmol/L	Poorly managed, take action to lower
8%	10 mmol/L	Marginally managed, take action to lower
7%	8.3 mmol/L	Well-managed
6%	6.6 mmol/L	Very well-managed

It is important to note that a 7 % A1c does not mean that you have an average blood sugar of 7 mmol/L.

*The newly incorporated Chapleau and District Family Health Care Team is currently looking to fill the following position:*

### 1 Part-Time Registered Nurse

The Chapleau and District Family Health Team (CDFHT) will augment the services currently provided through the Chapleau Health Team Physician Group with a range of services from other health professions, to offer comprehensive primary care for the 2,500 residents of Chapleau and District. It is the CDFHT's mission to improve the health of these people and the community by providing integrated, comprehensive and collaborative primary health care.

The Chapleau & District Family Health Team has an exciting Registered Nurse opportunity available for steady Monday – Friday daytime hours in Chapleau, ON. This is a great opportunity to work in partnership with CDFHT physicians and other health care providers to perform patient care in an office setting. The position is best suited to an RN who enjoys a fast-paced environment, and possesses highly developed assessment, treatment, consultation, education, and computer skills.

The RN provides primary care functions and participates in the development, implementation, monitoring and evaluation of programs and services of the CDFHT for the individuals, families and the Chapleau Community.

Working in collaboration with an interdisciplinary team, the RN will share expertise and knowledge of health promotion, disease prevention, and chronic disease management across the patient's lifespan.

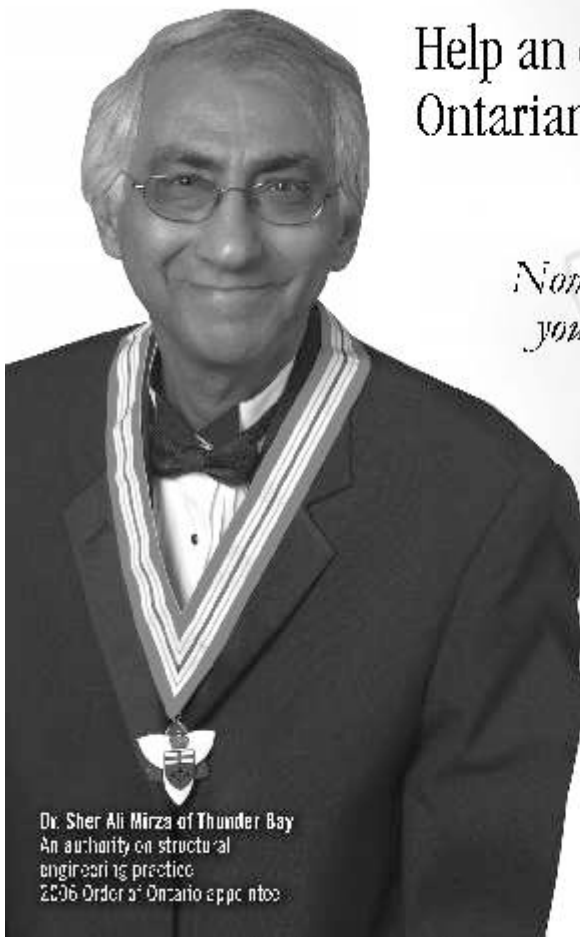
#### Qualifications:

- A Baccalaureate Degree in Nursing or a Registered Nurse diploma
- Current membership with the College of Nurses of Ontario and professional associations, including the RNAO
- Current certification in CPR (BLS-C)
- Excellent health assessment/clinical skills with the ability to perform a full range of duties and responsibilities
- Independent, creative and organized individual with strong oral/written communication, interpersonal, analytical, problem-solving and computer skills.
- Primary care experience particularly in chronic disease management and health promotion and prevention preferred
- Rural & remote experience an asset
- A valid Ontario Driver's License and access to transportation sufficient to travel throughout Chapleau and District, as needed
- Teaching experience is considered an asset, as is the ability to communicate in French.

Compensation based on experience as set by MOHLTC will range from \$30 to \$33 / hour

Interested applicants may submit résumés by March 7th, 2011 to:  
Chapleau and District Family Health Team  
P.O. Box 757  
Chapleau, Ontario  
P0M 1K0  
Attn.: Board Chair  
Email: [chapleauhr@sschs.ca](mailto:chapleauhr@sschs.ca)  
Fax: 705-864-0449

We thank all applicants for their interest, but only those selected for an interview will be contacted. All applications received will be held strictly confidential.  
Cet avis est disponible en français.



Dr. Sher Ali Mirza of Thunder Bay  
An authority on structural  
engineering practice  
2006 Order of Ontario appointee

Help an extraordinary  
Ontarian get recognition

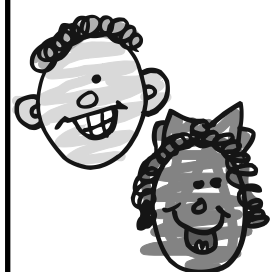
*Nominate someone from  
your community for the  
Order of Ontario.*

[orderofontario.ca](http://orderofontario.ca)

Deadline for nominations:  
March 16, 2011



Paid for by the Government of Ontario



## The Chapleau Child Care Centre

would like to assist you

to take care of your children while you work, attend school or enjoy that much-needed break.

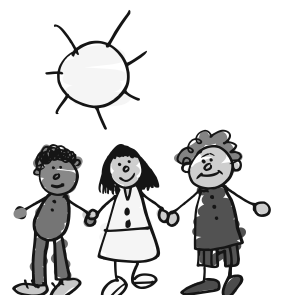
We offer a variety of early learning and care programs for children from birth to twelve years of age.

Services are available in French and English from 7:30 a.m. to 5:30 p.m. Monday to Friday each week.

We also offer different user options, family rates and subsidy.

**Stop by the Centre at 28 Golf Road or call 864-1886 for more information!!**

**Let us be a part of your child's learning experience!**



# Chapleau High School News

## Leadership awareness Conference Character Education



Three students from Chapleau High School attended the Rotary Leadership Awareness Conference at Bil-O-Wood Camp outside Blind River. The four day conference was sponsored by the Sault Ste. Marie Rotary Club who emphasized that it was "designed to promote awareness, recognition, development and effective use of leadership skills through participation in various activities, thought-provoking exercises and discussions and listening to and interacting with accomplished speakers and conference leaders." Volunteers provided the supervision and support services for the conference which was attended by representatives from schools in Sault Ste. Marie with outlying areas being invited to also send participants. Attending from CHS and receiving certificates were Alexis Doyle-Evans, Sabrina Kanala, and Melodie Levesque. The girls came back full of enthusiasm and ideas, telling everyone who would listen what a fantastic time they had and what great friends they made, some of whom were from other countries. Sabrina stated that it was the greatest experience of her life and urged others to go if given the chance. Thank you to the Sault Rotary Club for inviting CHS to attend and to T. Kanala and S. Doyle for driving the girls to Blind River and back.




For January, the character trait was Honesty and Integrity. The recipients were: (Left to Right) Grade 11 Baylee Law, Grade 10 Billie-Jean Landry, Grade 9 Adam St. Germaine, Grade 12 Danielle Charron. Congratulations to these students for practicing honesty and integrity during the school day and on their own time.

## Semester II starts with Breakfast at Chapleau High School



Staff members of Chapleau High school prepare pancakes for students at the beginning of semester II. Also on the menu were ham, fresh fruit, yogurt and juice. The tradition continues that the beginning of each semester starts with a healthy breakfast for all students.

Students partake in a hearty breakfast prepared by the Chapleau High School staff to begin Semester II.



**Employed? NEW - Wednesday Evening Classes!**

**FREE**  
Adult Education  
Grade 12-Computers-Reading  
Writing-Numeracy-Science  
Essential Skills

**Chapleau**  
**LEARNING CENTRE**

Call to enroll  
Mon. to Fri.  
**864-2323**

Funded by the Government of Ontario **EMPLOYMENT ONTARIO**

# Pink Shirt Day Kick-off



“Police partners joined ADSB staff and Administration to kick off Pink Shirt Day which was on Wed. February 23. ADSB schools celebrated the important Anti-Bullying Campaign all next week (Feb 22 - 25). Pictured left to right: OPP Acting Staff Sergeant Dan Esposto, Superintendent Lucia Reece, Director of Education Mario Turco, ADSB Character Lead Teacher Kerry Grbich and Sault Ste Marie Police Sergeant Rob Gioia, all in their "Bullying Stops Here" pink T-shirts.”

## LACROIX BUS LINES INC.

### Full Time-Part-Time Drivers Needed



#### School Bus Driver:

A job that everyone wants:  
Holidays, March Break, Christmas & New Years (2 weeks in total) and summers OFF.  
Have your day to yourself  
(Work mornings & afternoons)

### OUR SCHOOL BUS DRIVERS Carry precious cargo everyday.

If you are seeking a rewarding career, join our team.

In our drivers seat, you can make a difference in a child's life.  
CLASS "B" LICENCE NEEDED FOR SCHOOL BUS DRIVERS  
CLASS "B-Z" LICENCE NEEDED FOR CHARTER DRIVERS  
**WILL PROVIDE TRAINING**

CALL TODAY  
Call: Larry or Cindy  
864-0257 or fax 1-705-864-2679



\* TEETH CLEANING SERVICE IN CHAPLEAU\*

KRISTA MOREAU  
SIMPLY CLEAN DENTAL CARE  
95 BIRCH STREET

Teeth Cleaning, Teeth Whitening, Custom Sport Mouthguards

Book your appointment today

864-1903

or simplycleandentalcare@bell.net

Most insurances accepted

## AVIS AUX CAMIONNEURS LIMITES DE CHARGES AU PRINTEMPS 2011

Conformément au *Code de la route*, la province applique des limites de charges aux camions pour protéger les routes de l'Ontario pendant le dégel au printemps saison au cours de laquelle les risques de dommages à la chaussée sont élevés.

### Limitation relative aux autorisations accordées conformément au *Code de la route*:

Tous les permis annuels et de projet visant à déplacer, au moyen de véhicules lourds, des charges, des objets ou des structures dont les dimensions excèdent les limites établies dans le Code sont, sauf indication contraire, invalides sur toute route au cours des mois de mars et d'avril, dans le Sud de l'Ontario, et au cours des mois de mars, d'avril et de mai dans le Nord de l'Ontario.

Aux fins de cette limitation, la province est divisée en deux parties, de l'ouest à l'est, par une ligne formée par la rivière Severn jusqu'à la route régionale 169; de la route

régionale 169, à Washago, jusqu'à la route 12; la route 12, de la route régionale 169 jusqu'à la route 7 au nord de Sunderland; la route 7, de la route 12 jusqu'à la route régionale 7B à Carleton Place; la route régionale 7B jusqu'à la route 15; et la route régionale 29 jusqu'à Arnprior.

Des permis de déplacement unique de charges excessives sur les routes non désignées dans les annexes 1, 2 et 3 peuvent être accordés, mais sont assujettis aux contrôles d'essieu établis par le ministère des Transports.

**La limite de charge réduite entrera en vigueur au moment et à l'endroit où des panneaux seront installés en fonction de l'état des routes et des conditions météorologiques.**

### ▶ ANNEXE 1 DU 1<sup>ER</sup> MARS AU 30 AVRIL 2011

AUCUNE ROUTE EXIGEANT UNE CHARGE RÉDUITE N'EST DÉSIGNÉE DANS CETTE ANNEXE POUR LE MOMENT.

### ▶ ANNEXE 2 DU 1<sup>ER</sup> MARS AU 31 MAI 2011

AU MOMENT OÙ DES PANNEAUX SERONT INSTALLÉS, LA PÉRIODE DE CHARGE RÉDUITE S'APPLIQUERA AUX ROUTES SUIVANTES SUR TOUTE LEUR LONGUEUR :

538 554 563 651 667 670

AU MOMENT OÙ DES PANNEAUX SERONT INSTALLÉS, LA PÉRIODE DE CHARGE RÉDUITE S'APPLIQUERA AUX ROUTES SUIVANTES SUR LE TRONÇON INDICÉ :

#### ROUTE EMPLACEMENT

129 De 16,2 km au nord de l'intersection de la 554 jusqu'à 48 km au sud de l'intersection sud de la 101  
532 De 6,4 km au nord de l'intersection de la 556 jusqu'à la fin de la 532  
546 De 0,6 km au nord de l'intersection de la 17, vers le nord, jusqu'à la fin de la 546  
548 De la rue Maple (Hilton Beach), vers le sud, jusqu'à la limite sud-ouest de Richard's Landing  
556 De la 532 à la 129  
557 De 2,7 km au nord de l'intersection de la 17 (Granary Lake Rd.), vers le nord, jusqu'à la fin de la 557

#### ROUTE EMPLACEMENT

638 De 2,5 km au nord de l'intersection est de la 17, vers le nord, jusqu'à 1,3 km à l'est de l'intersection ouest avec la 17  
7045 De la promenade Havilland Shores, du côté ouest de la 17, de 0,3 km de la 17, vers l'ouest sur 1,3 km  
7045 De la promenade Havilland Shores, du côté est de la 17, de la 17 vers l'est sur 0,6 km  
7045 Sur le chemin Macintyre, de la 17 vers le nord sur 1,5 km jusqu'à l'intersection du chemin Trout Lake

### ▶ ANNEXE 3 DU 1<sup>ER</sup> MARS AU 30 JUIN 2011

\* AUCUNE LIMITE DE CHARGE RÉDUITE SI SURLIGNÉE. AU MOMENT OÙ DES PANNEAUX SERONT INSTALLÉS, LA PÉRIODE DE CHARGE RÉDUITE S'APPLIQUERA AUX AUTOROUTES/ROUTES DES TERRITOIRES SUIVANTS :

Aberdeen & McMahon  
Aweres 1 S.L.B.  
Aweres 2 S.L.B.  
Devil's Lake  
Devon Landing

Esher-Como-Healy  
Fenwick, Pennefather & Vankoughnet  
Galbraith-Morin  
Garden Lake

Gaudette & Hodgins  
Goulais Mission  
Havilland S.L.B.  
Hawk Junction  
Horseshoe Bay

Northland Lake  
Patton & Montgomery  
Peace Tree  
Red Rock  
Sultan

Tilley  
Vankoughnet & Aweres  
Vixen Lake  
Wabos  
Wharcliffe

[ontario.ca/chargesdecamions](http://ontario.ca/chargesdecamions)



# Triple P Parenting Program Launch in Chapleau



In the picture are the four Triple P practitioners in Chapleau. Trish Hamill (Best Start Hub), Mindy Maxwell (Child and Family Centre), Alana Fortin (Chapleau Child Care Centre, Doriane Jones (Children's Community Network).

A coalition of children's service providers in the Sudbury and Manitoulin district has launched a parenting initiative called the Positive Parenting Program (Triple P). Triple P is a coordinated system of parenting supports that is now available for all families in the Greater

Sudbury and Manitoulin Districts. We know that parenting children and teens is very rewarding and enjoyable but that at times it can also be

challenging and frustrating. Triple P aims to build confidence in parents, positive behaviour in children and community support for raising children. Triple P is a community of Chapleau we have four practitioners trained in Triple P, each offering a different level of parenting support.

Families in Chapleau who are interested in learning more about Triple P are encouraged to contact Children's Community Network at 864-0860 so that they can refer families to the appropriate practitioner. Parents can also browse at the Triple P Ontario website [www.triplep.ontario.ca](http://www.triplep.ontario.ca). Within the

## NOTICE TO TRUCKERS 2011 SPRING LOAD RESTRICTIONS

Under the Highway Traffic Act, the province enforces reduced load restrictions on trucks to protect Ontario's highways during spring thaw, when road damage is most likely to occur.

### Restriction on permits issued under the Highway Traffic Act:

All annual and project permits for moving of heavy vehicle loads, objects or structures, in excess of limits set out in the Act, unless otherwise specified are not valid on any highways during the months of March and April, in the southern portion of Ontario, and March, April and May in the northern portion.

For this restriction, the province is divided, west to east, by a line formed by the Severn River to Regional Rd. 169; Regional Rd. 169 from Washago to Hwy. 12; Hwy.

12, from Regional Rd. 169 to Hwy. 7, north of Sunderland; Hwy. 7, from Hwy. 12 to Regional Rd. 7B at Carleton Place; Regional Rd. 7B to Hwy 15; and Regional Rd. 29 to Arnprior.

Single trip permits, for moving of overloads on highways not designated in Schedules 1, 2 and 3, may be issued, but are subject to axle controls established by the Ministry of Transportation.

### Reduced load limits will be in effect where and when signs are posted depending on road and weather conditions.

#### SCHEDULE 1 HIGHWAYS MARCH 1 TO APRIL 30, 2011

THERE ARE NO HIGHWAYS IN THIS SCHEDULE HAVING A REDUCED LOAD PERIOD.

#### SCHEDULE 2 HIGHWAYS MARCH 1 TO MAY 31, 2011

WHEN SIGNS ARE POSTED, THE FOLLOWING HIGHWAYS WILL HAVE A REDUCED LOAD LIMIT FOR THEIR ENTIRE LENGTH:

538 554 563 651 667 670

WHEN SIGNS ARE POSTED, THE FOLLOWING HIGHWAYS WILL HAVE A REDUCED LOAD LIMIT FOR THESE LISTED LOCATIONS:

HWY.#	LOCATION	HWY.#	LOCATION
129	16.2 km north of Jct. Hwy. 554 to 48 km south of the south Jct. of Hwy. 101	638	2.5 km north of east Jct. Hwy. 17 north to 1.3 km east of west Jct. Hwy. 17
532	6.4 km north of Jct. Hwy. 556 to end of Hwy. 532	7045	Havilland Shores Drive, west side Hwy. 17, 0.3 km from Hwy. 17 west 1.3 km
546	0.6 km north of Jct. Hwy. 17 north to end of Hwy. 546	7045	Havilland Shores Drive, east side Hwy. 17, from Hwy. 17 east 0.6 km
548	Maple St. (Hilton Beach) south to southwest limits of Richard's Landing	7045	Macintyre Road, from Hwy. 17 north 1.5 km to Jct. of Trout Lake Road
556	Hwy. 532 to Hwy. 129		
557	2.7 km north of Jct. Hwy. 17 (Jct. of Granary Lake Rd.) north to end of Hwy. 557		

#### SCHEDULE 3 HIGHWAYS/ROADS MARCH 1 TO JUNE 30, 2011

WHEN SIGNS ARE POSTED, THE HIGHWAYS/ROADS WITHIN THE FOLLOWING TERRITORIES WILL HAVE A REDUCED LOAD LIMIT:

Aberdeen & McMahon	Devon Landing	Garden Lake	Horseshoe Bay	Red Rock	Vixen Lake
Aweres 1 S.L.B.	Esher-Como-Healy	Gaudette & Hodgins	Northland Lake	Sultan	Wabos
Aweres 2 S.L.B.	Fenwick, Pennefather & Vankoughnet	Goulais Mission	Patton & Montgomery	Tilley	Wharnclyffe
Devil's Lake	Galbraith-Morin	Havilland S.L.B.	Peace Tree	Vankoughnet & Aweres	

[ontario.ca/truckloads](http://ontario.ca/truckloads)



ADS AND ADVERTISEMENTS FOR THE CHAPLEAU EXPRESS WILL BE ACCEPTED AT Denise's FLOWER SHOP



**I.D. Photos**  
FAC - PAL  
**864-1870**



## NORTHERN HAUL CONTRACTING

### Full-Time Positions Available Immediately

- 1 Parts Purchaser  
-purchase & control inventory  
-computer skills required
- 4 Processor Positions - experience required
- 4 Forwarder Positions - experience required
- 4 Feller Buncher Positions - experience required
- 1 Heavy Equipment Mechanic  
- Licenced or 3rd year apprentice
- 2 Dozer Operators - experience required
- 2 Excavator Operators - experience required
- 2 Truck Drivers  
-AZ licence required. Must provide driver abstract
- 1 Forestry Technician
- 1 Health & Safety Co-ordinator
- 1 Grader Operator - experience required

Apply with Resume  
Fax 705-864-1110  
E-mail [tracey@northernhaul.com](mailto:tracey@northernhaul.com)

## If your investments scream whenever markets drop, you need a Northern RRSP Pick-Me-Up!



Ask us about  
**MARKET-LEADING GICs**  
with rates up to **5.90%\***

The Northern  
**RRSP  
Pick-Me  
UP!**

Is your RRSP on track? Or is market volatility taking you off the rails? Has your advisor been listening, helping? If the answer seems like no too often, here's the Northern RRSP Pick-Me-Up

SAVINGS SMARTS • REFRESHED PLANS  
ENTHUSIASTIC EXPERTS • INVESTMENTS

We'll provide service and expertise in all four areas whether you're just starting out or getting back on track. You don't need a fortune to save and invest. Just a better guide. Northern: we see the wealth in everyone!

**Get Your RRSP Pick-Me-Up today plus  
5-year GIC rates as high as 5.90%\***

Connect with: Cathy Ansara  
[cathy.ansara@northerncu.com](mailto:cathy.ansara@northerncu.com)  
(705) 864-1841  
34 Birch St., Chapleau



building financial futures, *together.*

[www.northerncu.com](http://www.northerncu.com)

\*Rates may vary. Community Bond rates have a 5 year yield of 2.827% earning 5.90% in year 5.

## Le Blues des URINOIRS



90 minutes de rires et plus

Le SAMEDI 5 MARS à 20 heures  
Aux Trois Moulins

Adulte 25\$ 20\$(membre)  
Étudiant 10\$ (16 ans +)

Présenté par  
Centre culturel Louis-Hémon

Billets en vente maintenant  
Centre culturel Louis-Hémon  
et FormationPLUS



### REQUEST FOR PROPOSAL

Current and Future Needs for Chapleau Seniors  
for Long Term Care, Retirement and Assisted Living

Services de santé de Chapleau Health Services has applied for funding to develop a report to assess current seniors' housing needs and options, outlining future requirements. Key components of this study will include:

- Developing an inventory of current seniors' housing capacity
- Analyzing current and future long term care bed needs
- Assessing the potential for developing and/or expanding supportive housing for seniors
- Identifying local challenges and opportunities in relation to required development

Responses to this request for proposal must be received by March 4<sup>th</sup>, 2011 and must detail:

- The methodology and approach that will be used
- Total cost estimate, separately identifying cost components relating to time, travel (if any) and out of pocket expenses
- References
- Timelines for completion

Funds for this project must be spent by March 31, 2011.

Any questions about this RFP, as well as submissions must be addressed to:

Gail Bignucolo, CEO  
Services de santé de Chapleau Health Services  
6 Broomhead Road, Box 757  
Chapleau, Ontario P0M 1K0  
Tel: 705-864-3050  
Fax: 705-864-0449

Funds for this project must be spent by March 31, 2011.



# Chapleau Public School News



On February 10, the Kindergarten Class hosted a celebration honouring "100 Days of School". The separate classes did special activities with the Kindergarten class and at the end of the day the entire school came to the class to decorate and eat cupcakes together! The school had a special challenge for the day - every child needed to get 100 signatures from their peers and teachers! It was an amazing day and everyone had a wonderful time together! Dawny, Leland and Paradise are pictured wearing their beautifully decorated t-shirts with the numbers from 1 - 100!

## Sudbury & District Health Unit's presents cheque to United Way



*Krista Galic, infirmière-hygiéniste et coordonnatrice de la campagne en milieu de travail du Service de santé publique de Sudbury et du district, et la Dre Penny Sutcliffe, médecin-hygiéniste du Service de santé publique, présentent un chèque de 16 340 \$ à Michael Cullen, directeur de la campagne de United Way/Centraide Sudbury and/et District. Cette somme a été recueillie grâce à des déductions sur la feuille de paie des employés et à une série d'activités de cueillette de fonds, notamment une vente aux enchères par écrit.*

**Krista Galic, Public Health Nurse and Workplace Campaign Coordinator for the Sudbury & District Health Unit and Dr. Penny Sutcliffe, Medical Officer of Health for the Health Unit, present a cheque for \$16,340 to Michael Cullen, Campaign Director for the United Way/Centraide Sudbury and/et District. Funds were raised through employee payroll contributions and a variety of fundraising events, such as a silent auction.**

## Creating Jobs In Ontario's Forestry Industry

*McGuinty Government Putting Ontario's Wood To Work, Supporting The Economy*

Eleven forestry companies have accepted wood supply offers from the Province, creating 163 new jobs and sustaining 404. This will also help create other jobs in the forestry sector, and support local economies. The companies will use the proposed wood allocations for traditional and new forest products including: Creating clean-burning wood pellets and briquettes

for energy production, providing a wide variety of lumber for construction, producing drill core boxes and timbers for the mining industry. The wood supply competition is aimed at putting Ontario's unused wood to work while the government takes steps to introduce a new forest tenure and pricing system. Helping build a stronger forest industry is an impor-

tant part of the Open Ontario plan to create jobs and opportunities in Northern Ontario. The total wood supply offered to the 11 companies is 765,700 cubic metres per year. Ontario received 115 submissions under the provincial wood supply competition from existing and new forest companies interested in using provincially owned wood and investing in the province.



### Chapleau Cree First Nation 17th Annual Kids Fishing Derby

**Was a great success!**

**Thank you to all the sponsors that have made this event possible:**

- |                           |                         |
|---------------------------|-------------------------|
| Colin Lachance            | Gregg's Gas Bar         |
| Le Salon                  | Grand & Toy             |
| Leroy Construction        | Model Drug Store        |
| Chapleau Auto Parts       | Collins Home Hardware   |
| Cavalier Motel            | Aux Trois Moulins Motel |
| Wyatt Image               | M.B. Contracting        |
| Pimii Kamik Gas Bar       | Northern Credit Union   |
| Denis Flower Shop         | Chapleau Cree Health    |
| MNR                       | Royal Bank              |
| Abinoojii Family Services | KPMG                    |

**We Hope To See You All Next Year!!**

# Council Briefs

## January 17th, 2011 Meeting

As published on the Chapleau Township Portal:

Present: Mayor: A. Byham. Councillors: L. Crichton-Bernier, D. Greig, R. Bertrand. CAO: A. Pellow. Excused Absence: Councillor: L. Lacroix

**Declaration Of Pecuniary Interest(s):** "None disclosed". **Guests/delegations:** Roger Perreault & Kathleen Bouchard, Chapleau Artic Watershed Snowmobile Club.

**RESOLUTION 2-23:** R. Bertrand – L. Crichton-Bernier. That the minutes of the regular meeting of the Transitional Living Committee held Monday, December 20th, 2010 be approved as prepared and the following resolutions are hereby ratified by the Council; **TLC Resolution 20-30:** P. Ouellette – A. Byham. That the Transitional Living in Chapleau Committee recommends to Council that the Agenda be

approved. Carried. **TLC Resolution 20-31:** A. Byham – B. Ivey. That the Transitional Living in Chapleau Committee recommends to Council that the Minutes of the meeting held on November 5, 2010, be approved. Carried. **RESOLUTION 2-24:** R. Bertrand – D. Greig. That the minutes of the regular meeting of the Council held Monday, January 10th, 2011 be approved as prepared; And Be it further resolved that it be recorded that Councillor Crichton-Bernier was authorized by Council at the regular meeting held January 10th, 2011 to make inquiries of various veterinarians as to the cost of euthanizing animals for the Township. Carried. **RESOLUTION 2-25:** L. Crichton-Bernier – R. Bertrand. That the minutes of the regular meeting of the Chapleau Economic Renewal Committee held Wednesday, January 12th, 2011 be approved as prepared and the following resolutions are hereby ratified by the Council; **CERC Resolution 28-126:** R. Perreault – R. Bertrand. That the Chapleau Economic Renewal Committee recommends to Council that the Agenda be

approved. Carried. **CERC Resolution 28-127:** R. Lynn – L. Lacroix. That the Chapleau Economic Renewal Committee recommends to Council that the Minutes of the meeting held on December 8, 2010 be approved. Carried. **CERC Resolution 28-128:** L. Lacroix – R. Bertrand. That the Chapleau Economic Renewal Committee recommends to Council that the following components of Chapleau's Revitalization Plan be accepted as the first priorities of Chapleau's revitalization initiative: 1. Infrastructure renewal on Birch Street (water and sewage, with the possibility of underground wires). 2. Town Square for multi-purpose use to be built on the Township's vacant property adjacent to the Innovation Centre on Birch Street. 3. Benches and site furniture (planters, etc.) to be located on Birch Street and at other key points throughout the town. 4. Signage on highways to Chapleau and signage/gateway and banners at strategic locations in the town. 5. Sidewalk Café Area

for existing businesses and/or new business to utilize on Birch Street. 6. Fence covering (shrink-wrap) depicting Chapleau's industrial heritage at industrial sites. Tabled to 2011 Capital Budget discussions. In addition to the first phase of priorities, the subcommittee identified the following components as secondary and third-round priorities for consideration in the future: Second Phase priority: Splash Pad. Third Phase priority: Trail Linkages and Interactive Museum. **CERC Resolution 28-129:** R. Perreault – R. Lynn. That the Chapleau Economic Renewal Committee recommends to Council that the Township CAO explore with the insurance provider the liability associated with having a Splash Pad. Carried. **CERC Resolution 28-130:** L. Lacroix – R. Bertrand. That the Chapleau Economic Renewal Committee recommends to Council that the Chapleau Revitalization Plan Subcommittee be dissolved and all future work on the Chapleau Revitalization Plan be undertaken by the Chapleau Economic Renewal Committee. Carried. **CERC Resolution 28-131:** R. Bertrand – R. Lynn. That the Chapleau Economic Renewal Committee recommends to Council that the EDS undertakes an investigation into the City of Dryden's website. Carried. **CERC Resolution 28-132:** R. Lynn – R. Perreault. That the Chapleau Economic Renewal Committee recommends to Council that an advertisement be posted in the Chapleau Express to recruit one additional member for the Chapleau Economic Renewal Committee who is a Chapleau business owner. Carried. **CERC Resolution 28-133:** L. Lacroix – R. Bertrand. Meeting adjourned at 1:23 p.m. Carried. **RESOLUTION 2-26:** L. Crichton-Bernier – D. Greig. That the following cheque register sheets be approved as prepared by the Treasurer: Cheque Register January 14, 2011 018765 – 018826 \$ 211,465.70. Carried. **RESOLUTION 2-27:** L. Crichton-Bernier – R. Bertrand. That Council appoint the following individuals to the Committee noted: Leisure & Culture Services: Michel Fortin, - Michael Levesque, Giselle Noel. Carried. **RESOLUTION 2-28:** L. Crichton-Bernier – D. Greig. That appointments to the Public Works Committee be tabled for further discussion at the next regular Council meeting to be held January 24th, 2011. Carried. **RESOLUTION 2-29:** R. Bertrand – L. Crichton-Bernier. That Council table the matter with respect to the summary of donations and grants for the years 2003-2011, to the regular meeting of Council to be held February 14th, 2011. Carried. **RESOLUTION 2-30:** D. Greig – L. Crichton-Bernier. That Council direct the CAO to advise the Municipal Engineer to pursue liquated damages with respect to the Water Plant Diesel Generator Project. Carried. **RESOLUTION 2-31:** L. Crichton-Bernier – R. Bertrand. That the following items be submitted on the ROMA/OGRA Municipal delegation request form for meetings with various Ministries: Ministry of Natural Resources: District Office Job Loses, NSFC/Regional Chiefs Projects, Bio-Mass Projects. Ministry of Transportation: Drivers licensing issues, Speed

limits on Highway 101, Ministry of the Solicitor General: Court cancellation issues, Ministry of Northern Development and Mines and Forestry: Land Tenure Reform, Bio-Mass Projects. Carried. **RESOLUTION 2-32:** L. Crichton-Bernier – R. Bertrand. That Council approve the draft Outdoor Rink Licence Agreement and hereby authorizes the CAO to forward same to Father Sebastien for review by the Catholic Church. Carried. **RESOLUTION 2-33:** R. Bertrand – L. Crichton-Bernier. That Council table Agenda Item # R-6 to the next regular meeting of Council to be held January 24th, 2011. Carried. **RESOLUTION 2-34:** R. Bertrand – L. Crichton-Bernier. That Council offer the Carnival Beer Garden to the following organizations in the order as follows: 1. Curling Club, 2. Ski Club, 3. Snowmobile Club, 4. Golf Club. Carried. **RESOLUTION 2-35:** L. Crichton-Bernier – R. Bertrand. That Mayor Byham be authorized to advise Mr. Lucien Pilon that Council will stand by its existing By-law that permits the loading or unloading of goods from public streets and laneways; And Be it further resolved that Mayor Byham be authorized to request Mr. Pilon not to interfere with vehicles loading or unloading on public streets or laneways. Carried. **RESOLUTION 2-36:** L. Crichton-Bernier – R. Bertrand. That Council pursue the development of a new web site for the Township and hereby appoints Economic Development Specialist, Janet Broomhead as the staff member responsible to lead this project with direction from the Chapleau Economic Renewal Committee. Carried. **RESOLUTION 2-37:** L. Crichton-Bernier – R. Bertrand. Whereas the Township currently utilizes a long gun to euthanize animals; And Whereas Council deems it necessary and expected to revise its policy to utilize the services of a Veterinarian for this purpose; Now therefore be it resolved that Council direct the CAO to develop a new policy to euthanize animals for Council's consideration and review. Carried. **RESOLUTION 2-38:** L. Crichton-Bernier – D. Greig. That Council terminate the purchase of lunches for Committee meetings. Defeated. **RESOLUTION 2-39:** R. Bertrand - L. Crichton-Bernier. That Council direct Mayor Byham to request Superior Bio Products President, Kerry Scott, for the name of the investor mentioned in Mr. Scott's letter dated January 14th, 2011; And Be it further resolved that Council authorize the CAO to proceed with the next step to terminate the lease between Superior Bio Products and Township if Mr. Scott is not prepared to provide the above information. Carried. **RESOLUTION 2-40:** R. Bertrand – L. Crichton-Bernier. That Council adjourn at 9:50 p.m. Carried

limits on Highway 101, Ministry of the Solicitor General: Court cancellation issues, Ministry of Northern Development and Mines and Forestry: Land Tenure Reform, Bio-Mass Projects. Carried.

**RESOLUTION 2-32:** L. Crichton-Bernier – R. Bertrand. That Council approve the draft Outdoor Rink Licence Agreement and hereby authorizes the CAO to forward same to Father Sebastien for review by the Catholic Church. Carried. **RESOLUTION 2-33:** R. Bertrand – L. Crichton-Bernier. That Council table Agenda Item # R-6 to the next regular meeting of Council to be held January 24th, 2011. Carried.

**RESOLUTION 2-34:** R. Bertrand – L. Crichton-Bernier. That Council offer the Carnival Beer Garden to the following organizations in the order as follows:

1. Curling Club, 2. Ski Club, 3. Snowmobile Club, 4. Golf Club. Carried. **RESOLUTION 2-35:** L. Crichton-Bernier – R. Bertrand. That Mayor Byham be authorized to advise Mr. Lucien Pilon that Council will stand by its existing By-law that permits the loading or unloading of goods from public streets and laneways; And Be it further resolved that Mayor Byham be authorized to request Mr. Pilon not to interfere with vehicles loading or unloading on public streets or laneways. Carried. **RESOLUTION 2-36:** L. Crichton-Bernier – R. Bertrand. That Council pursue the development of a new web site for the Township and hereby appoints Economic Development Specialist, Janet Broomhead as the staff member responsible to lead this project with direction from the Chapleau Economic Renewal Committee. Carried. **RESOLUTION 2-37:** L. Crichton-Bernier – R. Bertrand. Whereas the Township currently utilizes a long gun to euthanize animals; And Whereas Council deems it necessary and expected to revise its policy to utilize the services of a Veterinarian for this purpose; Now therefore be it resolved that Council direct the CAO to develop a new policy to euthanize animals for Council's consideration and review. Carried. **RESOLUTION 2-38:** L. Crichton-Bernier – D. Greig. That Council terminate the purchase of lunches for Committee meetings. Defeated. **RESOLUTION 2-39:** R. Bertrand - L. Crichton-Bernier. That Council direct Mayor Byham to request Superior Bio Products President, Kerry Scott, for the name of the investor mentioned in Mr. Scott's letter dated January 14th, 2011; And Be it further resolved that Council authorize the CAO to proceed with the next step to terminate the lease between Superior Bio Products and Township if Mr. Scott is not prepared to provide the above information. Carried. **RESOLUTION 2-40:** R. Bertrand – L. Crichton-Bernier. That Council adjourn at 9:50 p.m. Carried

1. Curling Club, 2. Ski Club, 3. Snowmobile Club, 4. Golf Club. Carried. **RESOLUTION 2-35:** L. Crichton-Bernier – R. Bertrand. That Mayor Byham be authorized to advise Mr. Lucien Pilon that Council will stand by its existing By-law that permits the loading or unloading of goods from public streets and laneways; And Be it further resolved that Mayor Byham be authorized to request Mr. Pilon not to interfere with vehicles loading or unloading on public streets or laneways. Carried. **RESOLUTION 2-36:** L. Crichton-Bernier – R. Bertrand. That Council pursue the development of a new web site for the Township and hereby appoints Economic Development Specialist, Janet Broomhead as the staff member responsible to lead this project with direction from the Chapleau Economic Renewal Committee. Carried. **RESOLUTION 2-37:** L. Crichton-Bernier – R. Bertrand. Whereas the Township currently utilizes a long gun to euthanize animals; And Whereas Council deems it necessary and expected to revise its policy to utilize the services of a Veterinarian for this purpose; Now therefore be it resolved that Council direct the CAO to develop a new policy to euthanize animals for Council's consideration and review. Carried. **RESOLUTION 2-38:** L. Crichton-Bernier – D. Greig. That Council terminate the purchase of lunches for Committee meetings. Defeated. **RESOLUTION 2-39:** R. Bertrand - L. Crichton-Bernier. That Council direct Mayor Byham to request Superior Bio Products President, Kerry Scott, for the name of the investor mentioned in Mr. Scott's letter dated January 14th, 2011; And Be it further resolved that Council authorize the CAO to proceed with the next step to terminate the lease between Superior Bio Products and Township if Mr. Scott is not prepared to provide the above information. Carried. **RESOLUTION 2-40:** R. Bertrand – L. Crichton-Bernier. That Council adjourn at 9:50 p.m. Carried

That Council terminate the purchase of lunches for Committee meetings. Defeated. **RESOLUTION 2-39:** R. Bertrand - L. Crichton-Bernier. That Council direct Mayor Byham to request Superior Bio Products President, Kerry Scott, for the name of the investor mentioned in Mr. Scott's letter dated January 14th, 2011; And Be it further resolved that Council authorize the CAO to proceed with the next step to terminate the lease between Superior Bio Products and Township if Mr. Scott is not prepared to provide the above information. Carried. **RESOLUTION 2-40:** R. Bertrand – L. Crichton-Bernier. That Council adjourn at 9:50 p.m. Carried

That Council terminate the purchase of lunches for Committee meetings. Defeated. **RESOLUTION 2-39:** R. Bertrand - L. Crichton-Bernier. That Council direct Mayor Byham to request Superior Bio Products President, Kerry Scott, for the name of the investor mentioned in Mr. Scott's letter dated January 14th, 2011; And Be it further resolved that Council authorize the CAO to proceed with the next step to terminate the lease between Superior Bio Products and Township if Mr. Scott is not prepared to provide the above information. Carried. **RESOLUTION 2-40:** R. Bertrand – L. Crichton-Bernier. That Council adjourn at 9:50 p.m. Carried

### Attention All Families

The Chapleau Best Start Hub will no longer be open on Tuesday and Thursday evenings effective March 1st 2011. We will be offering a new program called Tumble Gym on Wednesday evenings from 6-7:30pm. There will be mats, tunnels, balance beams and soft balls for children 0-6 years of age. Tumble Gym starts Wednesday March 2nd 2011

Sudbury North  
Best Start Hub

### Pimii Kamik Gas Bar & Gift Shop

Located on the Chapleau Cree First Nation

**WINTER HOURS**

will be from 7 a.m. - 9 p.m., 7 days a week

Drop by and check out our line of

**Authentic Native Crafts,  
Unique Gift Ideas, Jewellery,  
and Gift Certificates TOO!**

We also carry road trip snacks, which includes Subs, Chips, Pop, plus a whole lot more.

Your Propane Refilling Station



**THE LOCAL MARKET PLACE**

**CHADWIC HOME, FAMILY RESOURCE CENTRE**  
Offers shelter, emotional support, and information for women and their children who are in crisis situations. We have a Toll Free Crisis Line which is staffed 24 hours a day. We can arrange for free transportation to the Centre for women who live in the Algoma/Chapleau area. We also offer support to women who live in the communities of Chapleau, White River, Dubreuilville, and Horne-payne through our Outreach Program. Our Outreach Worker travels to those communities to meet with women who need emotional support as well as information about their rights and options. If you need to speak with the Outreach Worker when she is in your community, you can call the Centre at any time to set up an appointment. You do not need to be a resident of the Centre in order to use our services. If you need someone to talk to or if you just need someone to listen, call our Toll Free Crisis line at 1-800-461-2242 or you can drop in at the Centre. We are here for you.

**ALCOHOLICS ANONYMOUS** Offers help to anyone who desires to stop drinking. Open discussion meeting on Sundays at 2:00 p.m. Trinity United Church basement. Telephone contacts: 864-2786  
**ALCOOLQUES ANONYMES** Offre de l'aide à celui ou celle qui désire arrêter de boire. Les rencontres ont lieu tous les mercredis soirs à 19h (7:00 p.m.) Au sous-sol de l'église Sacré-Coeur. Téléphonnez au 864-2786  
**Narcotics Anonymous** offers help to anyone who desires to stop using drugs. Meeting every Thursday 7:30 p.m. basement Sacred Heart Church. Telephone contact 864-2786.

**Alcoholics Anonymous (A.A.)** Open discussion meeting every Monday evening. Brunswick House First Nation Band office lounge 7pm. **Narcotics Anonymous(N.A.)** every Tuesday same place same time. NNADAP Worker @ 864-0174 info.  
**Société Alzheimer Society meetings** will be held at the Chapleau Hospital every 1st Monday of each month starting from 7:00 p.m. to 9:00 p.m.

**APARTMENTS FOR RENT**

**Weekly or Monthly rentals** - Fully furnished bachelor and one bedroom apartments heat, hydro, cable & snow removal included available immediately. Call 864-1401 cont'd

**Large 1 bedroom apt.** centrally located, fridge and stove included, washer/dryer hook up. Call 864-0677. Leave message. Mar5

**PROPERTY WANTED**

**Quiet, down to earth Fisherman** that respects the north and admires the small community spirit is seeking a property with or without cottage/camp on an excellent walleye fishing system. Up to \$100,000.00. Please call Ken @ 705-732-2036 or ronm@zeuter.com Feb26

**ROOMMATE WANTED**

**To share** a nice, clean 2 bedroom apt. Laundry and parking space. Female preferred but will consider male roommate. 705-822-2074

**YOUR AD COULD BE HERE!**

**Réseau du mieux-être francophone du Nord de l'Ontario**  
*l'amélioration de la santé des francophones dans le Nord de l'Ontario*

Nous cherchons à combler les postes suivants:  
• Direction générale  
• Plannificateur principal  
• 5 Agents de planification  
Pour plus de renseignements et pour les dates de clôtures consultez notre site web  
www.santenordontario.ca

**ROCH'S AUTO REPAIR**

**Service Engine SOON**

24 hour Emergency Towing serving Chapleau since 1996 with automotive needs: Tires, sales, installation and repair.

Roch would like to take this opportunity to welcome Shane Charlebois to his team as a mechanic. Call and book an appointment today for all your automotive needs.

**LABOUR FOR OIL CHANGE**

**\$20.00**

Top off all fluids. Oil and filter extra

705-864-1477  
705-919-6915 (cell)



**CHAPLEAU EXPRESS**

**PAPER ROUTE AVAILABLE**  
Planer, Brown and Poplar Rd.

Please call 864-2579 and leave name and telephone number



**Visit these blogs to get views about the local political scene from Chapleau taxpayers.**

www.kimmo.ca

and

http://chapleauvote2010.blogspot.com/

**ALL ADS ARE ACCEPTED AT THE CHAPLEAU INNOVATION CENTRE**  
DEADLINE FOR RECEIVING ADS IS WEDNESDAY 4:00 p.m.

**CLASSIFIED ADVERTISING RATES**  
Regular Classified Ads First 25 words or less \$6.25 Each additional word \$0.16+GST  
**No refunds on cancelled classified ads.**

**Have a Good Weekend**

**SLOMA CLEANERS**  
Drop off at Between Friends (Cedar Grove) Mon to. Fri. 8 am-noon and 1-4 pm

**BERRY'S FREIGHT SERVICES**

TIMMINS - CHAPLEAU - TIMMINS

MONDAY TO FRIDAY 1lb. to 10,000 lbs.

FOR QUALITY SERVICES AT INEXPENSIVE PRICES GIVE US A CALL AT 1-705-264-4334

Alain Bouffard  
Sales Representative

61 Mission Road Wawa, Ontario, P0S 1K0  
Tel: 705-856-2394  
Fax: 705-856-4290  
alainbouffard@missionmotors.com



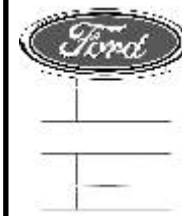
**ALLEMANO & FITZGERALD**  
Barristers and Solicitors

MICHAEL C. ALLEMANO, B.A., L.L.B.  
Certified by the Law Society as a Specialist in Real Estate Law

P.O. Box 10, 369 Queen St. E. Suite 103, Sault Ste. Marie, Ontario P6A 1Z4  
Phone (705) 942-0142 Fax (705) 942-7188  
P.O. Box 1700, 55 Broadway Avenue, Wawa, Ontario P0S 1K0  
Phone (705) 856-4970 Fax (705) 856-2713

**Northern Lights Ford Sales**

Andrew G. McKenzie  
11 Years of Service



Highway 17, North P.O. Box 1033 Wawa ON. P0S 1K0  
Bus: 705.856.2775 Fax: 705.856.4862 sales@northernlightsford.ca

**BODYLINES BY CRACK LTD.**



-5 Licensed Bodymen  
-Insurance Claims  
-Windshield Repairs and Replacement



-State of the Art Frame Machine

**ALL WORK GUARANTEED**  
PLEASE CALL 705-856-1406

**LVP** LABERGE VEINNE & PARTNERS  
CHARRIERS ACCOUNTANTS, INC. CONSULTANTS  
DIPLOMÉS EN C.A.P. ET C.M.A. (C.M.A.)

**Professional Services to Northern Ontario for 25 years**  
Financial Statements for Small Business & Corporations  
Tax Returns - Personal, Corporate and Trust/Estate  
Personal, Retirement, Estate Financial and Tax Planning Strategies  
Business Projections, Plans and Financial Proposals  
Computer Consulting  
ACCPAC and Quickbooks

1970 Paris Street, Sudbury, Ontario P3E 3C8  
(705) 523.0272 (800) 581.7510 www.lvpartners.ca

**LVP** LABERGE VEINNE & PARTNERS  
CHARRIERS ACCOUNTANTS, INC. CONSULTANTS  
DIPLOMÉS EN C.A.P. ET C.M.A. (C.M.A.)

**25 ans de service professionnels pour les entreprises du Nord de l'Ontario**  
États financiers pour petites et moyennes entreprises et corporations  
Rapports d'impôts personnel, de compagnie et de fiducie  
Planification financière et fiscale personnelle et de compagnie  
Projections financières, plans d'affaires et propositions de financement  
Consultation en informatique  
ACCPAC et Quickbooks

1970 rue Paris, Sudbury, Ontario P3E 3C8  
(705) 523.0272 (800) 581.7510 www.lvpartners.ca

**MISSION MOTORS** of WAWA

**Vehicle of the Week**  
**2006 Chevrolet Uplander**  
61 Mission Road, Wawa, ON, P0S 1K0  
Phone (705) 856-2394

Price: \$9,999.00 Odometer: 65,000km  
Exterior Colour: Blue Granite  
Interior Colour: Grey  
Engine: V6  
Fuel: Gasoline  
Stock #: 1056U  
Description: WAS \$14,900!!!!!!!!!!!!!!-----NEW CLEARANCE PRICE!

Doors: 5 Door  
Transmission: Automatic  
Drive: Front Wheel Drive

**NEW AT THE CHAPLEAU PUBLIC LIBRARY**  
**NEW BOOKS**

Minding Frankie - Maeve Binchy  
The Best Laid Plans - Terry Fallis  
Essex County - Jeff Lemire  
Full Dark, No Stars - Stephen King  
**NOUVEAUTÉS**  
Offrir l'espoir - Danielle Steel  
La maison aux souvenirs - Nora Roberts

# Moments from the Past: 1952 Carmen's Banquet



Submitted by Mary Gail O'Riley, original photo from Mrs. Olive McAdam. Banquet was held in the basement of the Town Hall.

**Back row:** Conrad Pilon, George Saunders, Mr. Sydney (Gal) Linklater, Regis Moreau, Ralph Lemieux, Syd Swanson, Gene Therrien, Gerald Coreau, Dorima Pilon, Burton McAdam, Doug Barrer.

**Middle row:** George Card, Romeo Martin, Johnny Pellow, Charlie Swanson, Clare Crozier, Gladys Desson, Mrs. George Saunders, Gertie Turner, Madeleine Pellow, Teddy Schroeder, Olive McAdam, Marie Swanson, Mrs. Conrad Pilon, Yvonne Therrien, Roger Pilon, Stanislaw Telik, Velma Morin, Mrs. Pilon, Albert (AB) Martin, Georgette Lacroix, David Lacroix, Shirley Barrer, Laura Linklater, Mrs. Swanson.

**Front row:** Vera Martin, Tootie Card, Lila Moreau, Dorothy Coreau, Tilly Martin, Bella Swanson, Mrs. Telik, Mrs. Westerman, Mrs. Emile Fortin, Mrs. Desson, Mrs Ester Swanson, Geraldine Butler, Laura Lemieux.

**VOTRE FORMATION AU BOUT DES DOIGTS**

Besoin d'aide pour améliorer tes compétences? Tu peux le faire à ton propre rythme et en ligne, dans un centre de formation dans ta région ou dans le confort de ton foyer. Quelques exemples de formation disponible sont :

- Programme de formation préparatoire à l'emploi, phase 1
- Programme de base en nutrition
- Communication écrite :
  - Le français au travail
  - Le français de tous les jours
  - Le français préparatoire aux études secondaires et postsecondaires

**TRAINING AT YOUR FINGER TIPS!**

Are you a Francophone who needs help to improve your skills? Now you can, on-line and at your own pace, either in a Francophone adult learning centre in your area, or from the comfort of your own home. We offer many training options, including:

- Employment Preparation Program, Phase 1
- Basic Nutrition Program
- Written Communication:
  - French in the workplace
  - French anytime, anywhere
  - French in preparation for secondary and postsecondary studies

**Communique avec nous pour en savoir plus!**

**Formation Plus**  
705-864-2763

**édu clic Ontario**  
is managed by CAF+

(Centre d'apprentissage et de formation+ de Cornwall)

**EMPLOI ONTARIO** **EMPLOYMENT ONTARIO**

Ce programme de Emploi Ontario est financé par le gouvernement de l'Ontario. / This Employment Ontario program is funded by the Ontario government.

[www.educlicontario.ca](http://www.educlicontario.ca)

## ATTENTION

### ICE FISHING ENTHUSIASTS

NEW ARRIVAL

**"SETS UP IN 1 MINUTE"**

**!!!!**

**ONLY \$279.00**

**ALWAYS A FAVOURITE**

**OTTER ICE SLEDS STARTING AT ONLY \$59.99**

**WE ALSO STOCK HITCHES, COVERS & RUNNERS**

## CHAPLEAU AUTO PARTS AND SMALL ENGINES

**Phone : 864-1222 C Fax : 864-2596**

**WE REPAIR & SERVICE ALL MAKES AND MODELS OF SNOWBLOWERS, ATV'S, ICE AUGERS, CHAIN SAWS, AND MUCH MORE.**

[www.chapleauautoparts.com](http://www.chapleauautoparts.com)