

Talk about good coffee!

Miss Muggins Coffee and Fresh Donuts



CHAPLEAU EXPRESS

Vol. 15, Issue 14, December 4, 2010

PIZZA HUT & KFC
There's a Reason We're Number 1
"0 TRANS FAT"
864-0911



Legion Branch No. 5 Honours & Awards Dinner



Guest speaker Ed Pigeau, President, Ontario Command, Royal Canadian Legion addressing the members at the honours and awards dinner.

Legion members and guests gathered together on November 29th for a long awaited Honours and Awards Presentation Dinner.

The following twenty nine members were presented with Past Officers Medals and Bars and Branch Service Medals: Graham Bertrand, David Tremblay, Tom Sawyer, Les Arnott,

James Apsey, David Hamilton, Michael Fortin, Pauline Cloutier, Rolly Larcher, Kellie McCarthy, Ryan McCarthy, Al Berry, Marc Fortin, A.J. Bowes, Doug Collins, Jack Mitchell, Scott Paquette, Anne Marie Gionet, James Dillon, Herb Butler, Gilbert Roy, Harold Casson, John Branchaud, Darryl Brunette, André

Paquette, Bruce McCarthy, Percy Encil, Conrad Tremblay and Naomi Bondy.

There were also the following Special Awards presented: Ladies Auxiliary Branch Service Medal and Certificate of Merit – Betty O'Shaughnessy; Certificates of Appreciation were received by Elaine Brunette, Don Card, Carmelle

Card, Denis Courtemanche, James Dillon, Velma Morin, Doug Prusky, Goldie Morris, George Card, Harold Casson and Sharon Martin.

Distinguished Comrades received long term membership awards as follows: Percy Encil – 65 Year Medal and Bar; Conrad Tremblay – 65 Year Medal and Bar; Henry Therriault – 65 Year Medal and Bar; Elwood Glabb – 65 Year Medal and Bar; Roy Steed – 65 Year Medal and Bar; Joe Crichton – 60 Year Medal and Bar; Gilbert Landry – 60 Year Medal and Bar; Laurie Westerman – 60 Year Medal and Bar; Ben Georgei – 60 Year Medal and Bar; Larry Ribout – 55 Year Medal and Bar; George Theriault – 55 Year Medal and Bar.

Plaques of Appreciation were presented to Russel Desjardins, Ryan Bignucolo and Shirley Casson.

District H Commander Len Leclair presented Naomi Bondi with the Life Membership Award.

Provincial President Ed Pigeau presented the Meritorious Life Membership to Betty O'Shaughnessy.

Comrade André Paquette was presented with the very prestigious Legion Meritorious Service Medal by Ontario Command President Ed Pigeau.

Colonel E.H. Rowe and Lieutenant Colonel Blake Golder presented Bruce McCarthy with the Colonel Commandant's Coin and Certificate on behalf of Brigadier-General, Retired Ernest B. Beno, OMM, CD, Colonel Commandant, The Royal Regiment of Canadian Artillery.

All in attendance enjoyed a wonderful meal prepared by Comrade André Paquette and

Darryl Brunette.

Guest Speaker, Provincial President Ed Pigeau outlined a few of the many projects that the Legion is undertaking in Ontario such as the Homeless Veterans Program, Code Named: Leave The Streets Behind. The program is to ensure that every veteran who is homeless or near homeless finds the help they need to leave the streets behind. Comrade Pigeau also draws our attention to the assistance and comfort provided to our Armed Forces of today with programs like the 3,500 Tim Horton's Cash Cards presented to the Commanding Officer of CFB Trenton and the Project at the Memorial Park at CFB Petawawa. Comrade Pigeau expressed his appreciation for the invitation to once again visit our community and congratulated all the Award Recipients of the evening.

Third annual get-together hosted by Chapleau Branch of Canadian Cancer Society

This is a warm Holiday invitation to all Chapleau area cancer survivors and their caregivers.

The Chapleau Branch of the Canadian Cancer Society is hosting their 3rd annual Christmas

Get-together on Saturday, December 11th, at 2:00 p.m. at the Trinity United Church Hall. Join us! We're planning holiday treats and refreshments, and good company all in a festive casual atmosphere.

Whether you

are a person presently living with cancer or a long-time survivor, you're invited along with a caregiver - a family member or close friend who helped you along your cancer journey.

The elves on the planning commit-

tee would like to know how many of you are joining us! For information or to RSVP, please contact one of our elves: Bonnie Desbois at 864-0855, or Joanne Laughland at 864-0724.

Dear readers, if you are a member of a

group that would like to contribute in a small way to this event, please call Joanne.

Our best wishes to all the readers, for a holiday season filled with hope, good health and the joy of being with family and friends.

Long Term Forecast

Friday
High -5
Low -10

Saturday
High -7
Low -13

Sunday
High -8
Low -14

Monday
High -11
Low -15

Tuesday
High -6
Low -12

Wednesday
High -4
Low -10



Superior Bio Products Ltd.



Wood Pellets Have Arrived in Chapleau \$333 + HST per Skid (60 bags)

Call 864-1095 and ask for Kerry or Tracey

If interested in pellet stoves, pellet fireplaces or pellet BBQs let us know

Réunion de l'École Chapleau High de 2012



Par Rose Bertrand

En 2012 l'École Chapleau High célèbrera son 90ième anniversaire à Chapleau.

A une première rencontre, les organisateurs de la réunion de C.H.S. ont décidé d'inviter d'anciens

étudiants et enseignants à Chapleau pour la fin de semaine du 1 juillet 2012.

Utilisant son expérience pour organiser le 75ième anniversaire en 1997 et son expérience du 100ième anniversaire de Chapleau en 2001, M. Graham Bertrand à dirigé la réunion.

M. Bertrand soulignait qu'au delà de 500 anciens étudiants s'étaient déjà intéressés et que 300 autres attendaient plus

d'information. M. Bertrand à déjà préparé une liste de tâches à accomplir assurant le succès de la réunion et plusieurs personnes ont acceptées des positions clés sur le comité de la réunion de l'École Chapleau High pour 2012.

Ce comité à besoin de beaucoup d'aide et de coopération pour compléter la tâche. D'autres volontaires sont nécessaires pour préparer une bien-

venue qui soulignera de nouveau que Chapleau est la municipalité la plus accueillante du Nord de l'Ontario. C'est le temps pour les anciens étudiants de se préparer à former créativement cette célébration du 90ième anniversaire de L'École Chapleau High.

La prochaine réunion du comité aura lieu le mercredi 8 décembre à 7h 30 PM à la salle du Conseil. Soyez les bienvenus.

C. H. S. Reunion in 2012



By Rose Bertrand

In 2012, Chapleau High School will mark its 90th birthday. At this first meeting of Reunion organizers, it was decided to invite former students and former teachers back to Chapleau for the July 1 weekend of 2012.

Using his experience in helping to organize the 75th anniversary of the school in 1997 and the 100th anniversary of the Township of Chapleau in 2001, Graham Bertrand chaired the meeting in the Council Chamber.

Graham was able to report that a preliminary excursion

into the internet attracted enthusiastic responses from about 500 former students and interest from about 300 more. Exiles from Chapleau warmly welcomed an excuse to come home.

As he worked through an outline of the matters that had to be done to organize a successful reunion, Graham charmed those present to assume key positions on the 2012 Reunion Committee. These will start the ball rolling.

But they will need much help and co-operation to complete the task. More volunteers are needed to prepare a welcome that will refresh Chapleau's claim to being 'The Friendliest Town in the North'. It is time for all

surviving generations of former students to help to shape the celebrations of the 90th year of Chapleau High School.

The 2012

Reunion Committee will next meet on Wednesday, December 8, 2010, at 7:30 p.m. in the Council Chamber. All are welcome.

LETTERS TO THE EDITOR

Yesterday I received news of the passing of Doctor Ted Yound. I wish to send my condolences to the people of Chapleau, knowing Dr. Ted as a child and his kindness to the family of Mr. and Mrs. James Robinson, his passing leaves me with great sadness.

As a child one memory of Doctor Ted was when he was asked to come to the house because there was a concern.

My new puppy

had taken ill, having eaten something it shouldn't have had. Dr. Ted played veterinarian that day, pleasing a very young girl. The puppy was fine the next day.

Also, he visited my mother Hazel Robinson almost every day during her last days. He will be terribly missed.

Sincerely,
Lorna "Robinson" Hutton



Conseil des Services du District de
Manitoulin-Sudbury
District Services Board

210 boul Mead Blvd
Espanola, ON P5E 1R9
Telephone/Téléphone: (705) 862-7850
Fax/Télocopieur: (705) 862-7805
http://www.msdsb.net

The Manitoulin-Sudbury District Services Board is a municipal service management organization created by the provincial government to oversee the local planning, coordination and delivery of a range of services and programs divested to the municipal order of government. The specific programs our DSB is responsible for are: Ontario Works, Social Housing, Emergency Medical Services (Land Ambulance), and Early Learning and Child Care services.

The following Employment Opportunity is now available to anyone interested in joining our highly dedicated workforce.

EMPLOYMENT CONSULTANT/JOB DEVELOPER

Permanent Full-Time Posting, Chapleau, Ontario

Competition #2010-09-OW

Closing date: December 8, 2010

For position details, visit Job Opportunities on our website at www.msdsb.net/jobs

While all responses are appreciated, only applicants selected for an interview will be contacted.

GOING TO CHURCH

Catholic Church
SACRED-HEART OF JESUS PARISH
PAROISSE SACRÉ-COEUR DE JÉSUS

26 Lorne Street North
OFFICE- 21 Lansdowne St.N.
864-0747

New Schedule Effective Nov. 7/09
Nouvel horaire à compter du 7 nov/09

Sat/sam 7 p.m. (E or F)
Sun/dim 9:30 a.m. (F or E)
Weekdays/Semaine lun-ven 9:30 a.m.

Wed/Mer (Hosp) 11:30 a.m.
Fr. Sébastien Groleau

ST. JEAN DE BRÉBEUF
(Sultan)

Liturgy of the Word
Liturgie de la parole
Mass 3rd Sunday

Messe 3e dim 12:00 Noon (B)
Permanent Deacon
Diacon Permanent
Ted Castilloux

Diocese of Moosonee
Anglican Church of Canada

ST. JOHN'S CHURCH
4 Pine Street West
864-1604

Sunday Service
10:30 a.m.
Rev. Bruce Roberts

ST. MARY'S ANGLICAN CATHOLIC CHURCH

78 Devonshire Street
864-0909
Sunday Service 10 a.m.

CHAPLEAU PENTECOSTAL CHURCH

9 Elm Street (P.A.O.C.)
864-0828

Sunday 10:30 a.m. & 7 p.m.
Wed. Family Night 7-8 p.m.
Fri. Story Hour
3:30-4:30 p.m.
Pastor Dan Lee

TRINITY UNITED CHURCH

Corner of Beech and Lorne
864-1221 Sunday Service and
Sunday School 11:00 a.m.
Anna Chikoski
Soup Kettle every 2nd Wednesday
of the month

www.angelfire.com/on/trinityuc

OUR LADY OF SEVEN SORROWS PARISH

PAROISSE NOTRE-DAME-DES-SEPT-DOULEURS (Foley)

Liturgy of the Word
Liturgie de la Parole
Mass 2nd-4th Sunday/
Messe 2e-4e dim 12:00 Noon (B)

COMMUNITY BIBLE CHAPEL

Corner of King and Maple
864-0470

Communion Service 9:30
Family Bible Hour 11 a.m.
Including Sunday School
Evening Bible Study and
Ladies Bible Study
during the week
Transportation available
Al Tremblay

The Chapleau Express

P.O. Box 457

Chapleau (Ont.) P0M 1K0

Telephone - Fax : 705-864-2579

e-mail : chaexpress@sympatico.ca

Published every Saturday/Sunday

Deadline for receiving ads is Wednesday at 4 p.m.

The Chapleau Express is delivered free of charge to every household each Saturday. If you have any comments, please feel free to contact us. Subscriptions: \$80.00 per year (Canada) \$150.00 U.S per year (U.S.A) Canadian Publications Products Sales Agreement #30183799

STARTING THE FIRST WEEK OF DECEMBER, ADS AND ADVERTISEMENTS FOR THE CHAPLEAU EXPRESS WILL BE ACCEPTED AT PURDY'S FLOWER SHOP

COME ONE COME ALL

Catholic Women's League is hosting

A

Special Candlelight Vigil of Prayers



On December 7th, 2010
7 p.m.

Music, Songs, Scripture,
Reading, Psalmodies.

Come join us and offer your own Prayers for a loved one.

Music by: Nancy Sylvestre
Soloist: Father Sébastien

Following the Vigil, Everybody is welcome for refreshments and goodies in the Lucien Pilon Hall



CLASSIFIED ADS WORK

Chapleau folks share memories of the season from Christmas market in Germany to church pageant and Santa Claus at Smith and Chapple Ltd.

Chapleau Moments

by
Michael J. Morris



Lorne Riley shares memories of Christmas songs from home countries while June-Marie Charlwood remembers the crisp cold snow and Ken Schroeder plays Santa Claus. It is the Christmas season and time one again to bring you moments from here and there and indeed everywhere.

Lorne Riley writes from Dubai where he is head of corporate communications for Dubai Airports that he lived overseas for 10 years now in three different countries and, "despite this, have managed to more or less maintain a 'Canadian Christmas'. It typically means flying home for two harried weeks jam-packed with dinners, lunches and get-togethers as we struggle to see as many people as possible in a very short time frame.

However, his favourite overseas Christmas experience was in Frankfurt where we used to have a staff party every year to celebrate Christmas in the German tradition."

Lorne explained that typically it started in the Christmas market in Hauptwache at the centre of the city with

cups of mulled, sweetened gluhwein or beer (the best in the world I might add) and snacks like bratwurst or kartofelpuffer (potato pancakes and apple sauce). It would end with a merry, multi-cultural group primed with Pils, gathered around a heavy wooden table laden with goose, rotkraut (red cabbage) and knoedel (a doughy dumpling the size of a baseball) in a smoky restaurant singing Christmas songs from our home countries. He also recalled very fond memories of Chapleau Christmases..."ham and perogies were the tradition at Christmas Eve at the Riley household, lovingly prepared by my mother (Jackie Riley who is a great cook...hi Mom!).

"In my teenage years our gang of friends (some of us from the NOHA Midget C Champion Chapleau Huskies...John Bernier, Pat Payette, Randy Carroll, Tim Morin, Donald Swanson, Mario Lapierre, Alain Bouillon and Paul Martel to name a few) would gather at the Payettes for some Christmas cheer and a singalong."

Just to interject



Lorne and Jackie Riley with their children Erin, Patty, Loreen and Lorne at a family Christmas in Chapleau.

a bit on the champion Midget C Huskies, they won the NOHA title in 1979-80 in Blind River in a nail biting series. The coaches were Jamie Doyle and Mike Tangie, and I was there on the bench with them. Also, Lorne's father, Lorne Sr., coached the Chapleau Midgets to an NOHA title in the Sixties which led to the founding of the Chapleau Junior B Huskies. Lorne Sr was the first coach of that team which won championships in 1966-67, its first year. When Lorne became ill, Keith "Buddy" Swanson, the manager took over as coach.

And most importantly Lorne shares: "I still remember waking up Christmas day to the smell of turkey roasting, opening the treats in

our Christmas sock which was pinned at the foot of the bed (a clever ploy by my parents to keep us entertained in our rooms so they could catch an extra hour or two of sleep) and looking through a thickly frosted window to see if sliding at Second Rock or on Hospital Hill was in the cards...that is if Santa brought the Krazy Karpet I had asked for..."

"While I haven't made it back to Chapleau for a very long time, and I rarely get to see my very good friends from back in the day, I'd like to send everyone back home best wishes for a very Merry Christmas and safe, healthy and Happy New Year."

June-Marie Charlwood, a member of one of Chapleau's pioneer families wrote

that the one memory she had of Christmas in Chapleau was the Christmas Pageant by the St. John's Anglican Church Sunday School and singing The Huron Carol.

June-Marie is the daughter of the late Bessie Woodard who was born and raised in Chapleau. Bessie married Maurice Charette and they lived in Chapleau in the early Fifties.

"Then we went to the Zufelts (Elsie (Hunt) and B.W. "Bubs" Zufelt lived on Beech Street at the time) and walking home in the crisp cold snow and watching the beautiful aurora borealis light up the sky...I believe I was 7 which would make it 1952..."

When June Marie mentioned 1952, it rang a bell and I went to my book

'Sons of Thunder ... Apostles of Love' to see what was happening at St. John's. I noted that at Christmas 1952 when Rev. E. Roy Haddon was the rector, the largest congregation ever recorded at a service to that time in the history of the parish was on Christmas Eve with 267 people in attendance. There were chairs in the aisle on a beautiful Winter evening.

June Marie also recalled getting a book called 'Fifty Famous Fairy Tales' that year which she still has and read to my children and grandchildren.Wow Michael you have brought up some very special memories to my heart..."

When I received an email from my lifelong friend Ken

Cont'd on P.7



Ontario
Licenced
Motor Vehicle
Inspection Station



Chapleau Cree Auto/Truck
Monday - Friday
8:30 a.m - 4:30 p.m.
"Preventive Maintenance keeps you on the road"
FOX LAKE RESERVE

CALL
864-9090
for an
appointment

Give your favourite family recipe a healthy makeover



By Stephanie Lawrence

(NC)—Love that old family recipe but not the fat and calories that come with it? Your favourite recipes may not be as healthy as you'd like them to be, - but it doesn't have to be that way. There are so

many simply and easy ways to trim the fat and keep the flavour of the recipes you and your family love.

C a r o l Dombrow, Heart and Stroke Foundation registered dietitian offers tips on how to make your favourite

recipe healthier, "try cutting down on some of the less healthy ingredients like fat, sugar and salt and at the same time increase healthy nutrients like fibre. While it seems tricky, it's actually quite simple and can be done without losing

any flavour."

C a r o l recommends these easy tips to reduce calories and fat and make your own recipes healthier:

- Substitute healthier fats and lower sodium ingredients, for example use soft margarine instead of butter, and sodium reduced broth.
- Load up on the vegetables.
- Use whole grains and whole wheat flour.
- Use fresh or dried herbs, spices, flavoured vinegars or lemon juice instead of salt to enhance flavour.
- For baked goods, cut down on the fat content and substitute part of the fat with a 100 per cent fruit sauce.
- Add lentils or cooked

beans to soups, salads and casseroles.

•Add dried fruits, unsalted nuts or seeds to yogurt, salads and muffins.

•Use lean cuts of meat and remove the skin from poultry and watch the portion size.

You don't have to give up your favourite recipe. Look

at the ingredients and see where you have room to improvise. The Heart and Stroke Foundation's Health Check website at healthcheck.org has more tips on how to make your recipes healthier and submit your recipe for a healthy makeover.

STARTING THE FIRST WEEK OF DECEMBER, ADS AND ADVERTISEMENTS FOR THE CHAPLEAU EXPRESS WILL BE ACCEPTED AT PURDY'S FLOWER SHOP

The Kebsquasheshing Golf Club Executive

Wishes to THANK

The following SPONSORS for their much Needed support for Adult Night 2010 season

- Aux Trois Moulins' Restaurant
- Collins Home Hardware
- The Lunch Box
- Michipicoten Golf Club-Wawa
- Chapleau Valu-Mart
- Chapleau Health Services
- Coca Cola-Timmins
- Aux Trois Moulin's Confectionary

SPECIAL THANKS to COLLINS HOME HARDWARE for looking after our registration

Annual Meeting December 7 at 7:00 PM at Chapleau Arena

Another Corporate Sponsor for Chapleau Chicks



The Chapleau Bantam Chicks were all smiles with the addition of Northern Renewable Energy and Lacroix Bus Lines Inc. as corporate sponsors. Proudly displaying the new sponsor's jersey banners were, from left to right, Dave O'Hearn, Assistant Coach; Kassie Friend, Assistant Captain; Billy Scheer, Assistant Coach; Erica Bouchard, Assistant Captain; Ashley Leach, Assistant Captain; Kyle St.Amand, Coach; Larry Lacroix, Corporate Sponsor; Gail Bignucolo, Trainer/Manager. Thank you Larry for your support!

BINGO

At the Royal Canadian Legion
December 12th at 7:00 p.m.
Door opens at 6:00

Entry Fee

\$25.00

Sponsored by



New Horizon Rebekah
Lodge No. 391

Le Centre De Garde De Chapleau

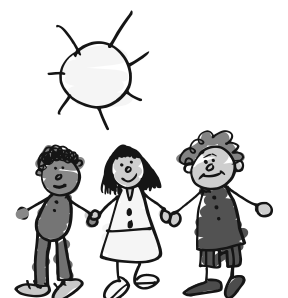
veux vous assister à prendre soins de vos enfants pendant que vous êtes au travail, à l'école ou simplement pour prendre une petite pause.

Nous offrons une variété de programme d'apprentissage et de garde pour les enfants de 18 mois jusqu'à 12 ans.

Les services sont disponible en français de 7h 30 à 17h 30 du lundi au vendredi.

Nous offrons différents options d'utilisateur, des tarifs de famille et des subventions.

Passez nous visiter au 28 rue golf ou composez le 864-1886 pour plus d'information. Laissez nous faire parti de l'expérience d'apprentissage de votre enfant!



NEOSSat: The world's first satellite dedicated to detecting asteroids and space debris

(NC)—In 2002, two asteroids made close approaches to Earth just months apart. In March, asteroid 2002 EM7 passed within 463,000 kilometres, not far beyond the moon's orbit. Then, in June, asteroid 2002 MN passed within 120,000 kilometres, less than a third of the distance to the moon. It was one of the closest asteroid fly-bys on record.

Media reports of these events charac-

terized them as "near misses" and emphasized the fact that the asteroids were not detected on their way in, but days later as they were leaving Earth's neighbourhoods.

In the case of 2002 MN, much was made of the fact that it approached the day side of Earth, literally coming "out of the blue." This is a blind spot where objects located near the sun, as seen from Earth, cannot

be detected by ground-based telescopes that monitor asteroid activity. These telescopes can only look for asteroids in the night sky, on the side of the earth opposite from the sun.

A tiny Canadian satellite called NEOSSat (Near Earth Object Surveillance Satellite) will help solve this problem. Scheduled for launch in 2011, it will be the first satellite

dedicated specifically to the search for asteroids. The microsatellite will carry a small but highly precise telescope able to detect and track satellites and debris in Earth's orbit's, as well as faint asteroids against the dark background of deep space.

Overall, NEOSSat is expected to discover about 1000 near-Earth objects. Circling the earth every

100 minutes, Canada's NEOSSat will scan space near the sun to pinpoint asteroids well before they pass near our planet.

The Canadian Space Agency and Defence Research and Development Canada are partners in the design and use of this high performance satellite. Dr. Alan Hildebrand of the University of Calgary is leading the Near Earth Asteroid Survey

with collaborating scientists from various universities while Dr. Brad Wallace from the Defence Research and Development Canada is the principal investigator for the High Earth Object Survey.

More information on NEOSSat can be found at the Canadian Space Agency web site at: www.asc-csa.gc.ca/eng/sciences/neossat.asp

How to brine and roast a turkey



turkey in a preheated 400° oven. Roast one hour then turn the heat down to 250° and continue roasting for 2 hours longer. For a 20 to 25 lb turkey or larger, roast for 3 more hours. If you have a convection oven, only roast for 45 minutes first before turning down the oven heat.

Flip the turkey breast side up and baste thoroughly. Add 2 cups of water to the roasting pan. Turn the

oven back up to 400° and continue roasting until the breast meat is exactly 165° and the thigh reads 170°. Baste and check the temperature every 15

minutes. Let the turkey rest covered with foil for 20 to 30 minutes before carving.

More holiday recipes can be found at www.foodnetwork.ca.

Courtesy of Food Network Canada's Chef at Home

(NC)—Try brining for the best tasting, juiciest holiday turkey ever. The results will be well worth the extra effort.

Directions

For a standard 12 to 25 lb turkey you will need 2 lbs of sea salt, 2 cups of brown sugar. You will also need a clean picnic cooler large enough to hold the turkey when completely submerged

in water.

Place the turkey, salt and sugar in the cooler. Cover with 4 gallons of cold water and submerge the turkey upside down. Turn the turkey a few times to mix the salt and sugar. Place the cooler in a cold place for 4 hours for a smaller turkey and as much as 6 hours for a larger one.

Remove the turkey from the brine and rinse well under cold running water.

Let rest uncovered overnight in the refrigerator.

Rub the turkey with butter, ground pepper and your favourite herb or spice mix. Stuff the turkey with fresh herb sprigs, garlic cloves and large chopped pieces of carrot, celery and onion. Place breast side down on a clean well oiled roasting rack in a roasting pan. Add 2 cups of water to the pan.

Place the




I.D. Photos
FAC - PAL
864-1870

The Chapleau Education & Training Coalition Inc.

will be closing its office effective December 17, 2010. If you have a resume on file, please drop in at the Chapleau Innovation Centre, located at 12 Birch Street East to pick it up or call Linda at 864.9434 **prior to December 9, 2010**. All documentation pertaining to clients will be shredded and permanently deleted from our computer systems on December 10, 2010.

La Coalition pour l'éducation et la formation de Chapleau Inc.

fermera son bureau le 17 décembre, 2010. Si vous avez un résumé dans nos dossiers, s.v.p. venez au Centre d'innovation de Chapleau situé au 12, rue Birch Est pour le ramasser ou appelez Linda au 864.9434 **avant le 9 décembre, 2010** Toute la documentation qui a rapport aux clients sera déchiquetée et effacée de notre système d'ordinateurs le 10 décembre 2010.



Reach your full Potential! You have the Power!

Literacy & Basic Skills
English, Math, Sciences, Computer Applications, Keyboarding and GED Preparation

Academic Career Entrance
Grade twelve equivalency for College, Apprenticeship Programs and Job Readiness

Chapleau

LEARNING CENTRE

FREE
Adult Learning
864-2323

Funded by the Government of Ontario **EMPLOYMENT ONTARIO**

Troisième rencontre annuelle de la Branche de Chapleau de la Société du Cancer

Voici une invitation chaleureuse à tous les survivants de cancer de la région de Chapleau!

La Branche de Chapleau de la Société canadienne du cancer, vous souhaite la bienvenue à notre 3e Rencontre amicale annuelle à l'occasion des Fêtes. Soyez parmi nous le samedi, 11 décembre, à 14h00, dans la Salle de l'Église Trinity United. Nous planifions des moments plaisants en bonne compagnie, avec de petites traites de Noël!

Que vous soyez nouvellement diagnostiqué ou survivant de plusieurs années, on vous attend, accompagné d'un membre de votre famille ou de quelqu'un qui vous a grandement aidé pendant votre expérience.

Les lutins du comité organisateur aimeraient bien savoir combien d'entre vous allez pouvoir participer. Pour plus de détails, ou pour confirmer votre présence, s'il vous plaît contactez un de nos lutins: Bonnie Desbois au 864-0855 ou Joanne Laughland 864-0724.

Chers, lecteurs, si vous faites partie d'un groupe qui aimerait contribuer à cet évènement, s.v.p. appelez Joanne.

Nos souhaits les plus sincères à vous tous, pour une saison des Fêtes remplie d'espoir, de bonne santé, et de la joie d'être parmi sa famille et ses amis!

**CLASSIFIED ADS
WORK**

Superior North Mobile Veterinary Services
will be welcoming new patients on
Wednesday, December 8th
at the Aux Trois Moulins Motel.
Please call Amanda
(705) 987-6893
if you would like to make a medical/surgical appointment for your pet

GIVE US A CALL TO BOOK YOUR WINTER RENOVATIONS OR NEW CONSTRUCTION
KITCHENS - BATHROOMS
→ Licensed Contractor
→ Licensed Carpenters
All the coverage the consumer needs!
We have added to our staff!
Need your house painted?
Give us a call....
Leo Panterre Construction Limited
864-1071

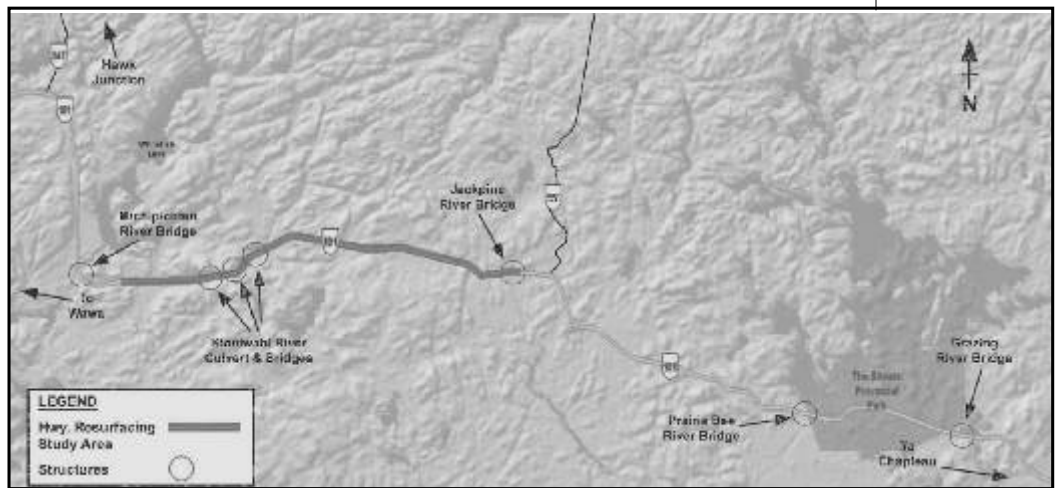
NOTICE OF STUDY COMPLETION TRANSPORTATION ENVIRONMENTAL STUDY REPORT PUBLIC REVIEW HIGHWAY 101 RESURFACING AND BRIDGE REHABILITATION G.W.P. 410-00-00

THE STUDY

Morrison Hershfield Limited has been retained by the Ministry of Transportation (MTO) to conduct a Detailed Design and Class Environmental Assessment Study for the Highway 101 resurfacing and bridge rehabilitation project between Chapleau and Wawa. This project involves the rehabilitation of seven (7) structures and the resurfacing of approximately 27.5 km of Highway 101.

The major work items within the project limits will include:

- resurfacing of Highway 101 from 14.8 km east of Highway 547 easterly to 2.2 km west of Highway 651, a distance of approximately 27.5 km;
- centreline culvert replacements;
- drainage ditching;
- the correction of frost heaves and distressed areas;
- the replacement of guiderails; and,
- the removal and reconstruction of property entrances including the right turn taper at the entrance to Potholes Provincial Park.



Also included is the rehabilitation of the following structures on Highway 101, between Highway 129 and Highway 17 as shown on the map above:

1. Jackpine River Bridge;
2. Kinniwabi River Culvert;
3. Kinniwabi River Bridge (Centre Crossing);
4. Kinniwabi River Bridge (West Crossing);
5. Michipicoten River Bridge;
6. Grazing River Bridge; and
7. Prairie Bee River Bridge.

THE PROCESS

The Environmental Assessment Study followed the planning process for a Group 'B' project under the *Class Environmental Assessment for Provincial Transportation Facilities* (2000). The Transportation Environmental Study Report (TESR) is now available for public information and viewing until January 10, 2011 at the following locations:

The Ministry of Transportation
Northeastern Region
447 McKeown Avenue, Suite 301
North Bay, ON P1B 9S9
Tel.: 705-472-7900

The Municipality of Wawa
40 Broadway Avenue
P.O. Box 500
Wawa, ON P0S 1K0
Tel.: 705-856-2244

Township of Chapleau
Chapleau Civic Centre
20 Pine Street East
P.O. Box 129
Chapleau, ON P0M 1K0
Tel.: 705-864-1330

Wawa Public Library
40 Broadway Avenue
P.O. Box 1730
Wawa, ON P0S 1K0
Tel.: 705-856-2062

Chapleau Public Library
20 Pine Street East
Chapleau, ON P0M 1K0
Tel.: 705-864-0852

The public is encouraged to review the report and provide comments. If, after consulting with the project team, the public has any other questions and/or concerns, please contact the Minister of the Environment (135 St. Clair Street West, Toronto, Ontario, M4V 1P5) to request a "bump-up" (i.e. make a Part II Order) for the project. A Part II Order may lead to preparation of an individual environmental assessment. A copy of the request should be provided to MTO and MH at the addresses noted below. If there are no outstanding concerns by **January 10, 2011**, the project will be considered to have met the requirements of the *Class Environmental Assessment for Provincial Transportation Facilities*, and will proceed to construction subject to approvals and available funding.

COMMENTS

We are interested in hearing any comments or concerns that you may have with the study. Please contact one of the following project team members:

Mr. Edward Li
Consultant Project Manager
Morrison Hershfield Limited
235 Yorkland Boulevard
Toronto, Ontario, M2J 1T1
Phone: 416-495-4228
Fax: 416-499-9658
E-mail: Eli@morrisonhershfield.com

Ms. Jennifer Bruin
Environmental Planner
Morrison Hershfield Limited
235 Yorkland Boulevard
Toronto, Ontario, M2J 1T1
Phone: 416-495-4306
Fax: 416-499-9658
E-mail: Jbruin@morrisonhershfield.com

Mr. Doug Rivers, P.Eng.
MTO Project Manager
Ministry of Transportation
301 - 447 McKeown Avenue
North Bay, Ontario, P1B 9S9
Phone: 705-497-5262
Toll-free: 1-800-461-9547
Fax: 705-497-6926
E-mail: Doug.Rivers@ontario.ca

Note: Comments and information regarding this study are being collected to assist in meeting the requirements of the *Environmental Assessment Act*. These comments will be maintained on file for use during the study in accordance with the *Freedom of Information and Protection of Privacy Act*. All comments become part of the public record with the exception of personal information.



Chapleau Moments

Cont'd from P.3

Schroeder with some memories, I actually did recall when he was Santa Claus at Smith and Chapple Ltd. Ken wrote: "I remember being a Chapleau 'Santa Claus' at Smith and Chapple one year, music was big ..nice and loudkids enjoyed... Jingle Bells... etc....Art Grout always was happy about these good timespeople smiling . Good times" They sure were great days Ken.

FROM MY EMAIL BAG

Vivian Edwards wrote about my article on John 'Mac' McClellan. "That article on Mr McClellan was so excellent. When I wanted a job at the Chapleau Telephone Co. I gave Mac as a reference and Mrs Delaney phoned him and he said hire her. It changed my whole life. I joined his bugle

band but he let me be in it but told me not to blow the bugle as I couldn't carry a note. I took the bugle home gees I was proud and was in the marching band but messed up as I swung my arms the same way. Poor guy he was so tolerant. When my brother Tom quit school he called my mom and said this boy was to carry on in school. Over the years I am sure he helped countless students. Great men happen only so often and he was one of them . Good job Michael."

DR. YOUNG MEMORIAL

I have been advised that the Queen's University Alumni Review will run a memorial article on Dr. G.E.Young in its Winter issue. Dr. Young graduated from Queen's in medicine in 1942. My email is mj.morris@live.ca

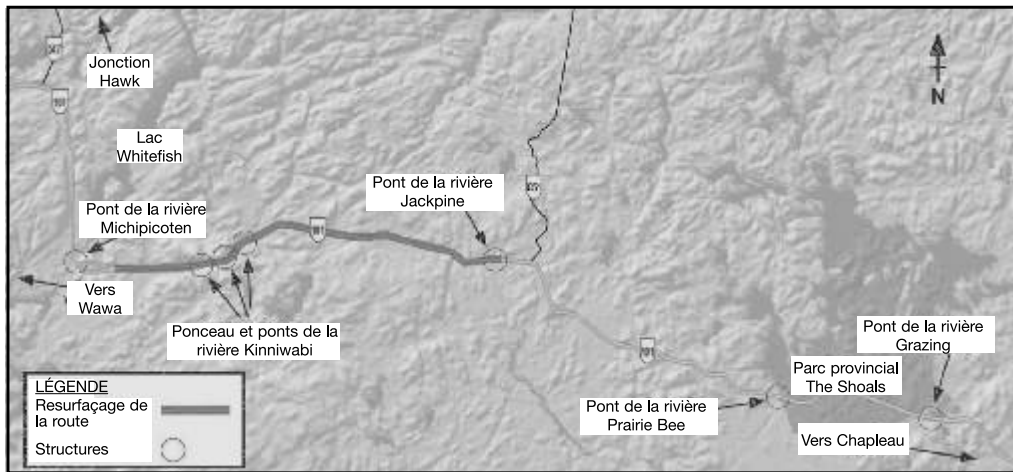
AVIS DE FIN D'ÉTUDE ET DE LA RÉVISION DU RAPPORT D'ÉTUDE ENVIRONNEMENTALE POUR LES TRANSPORTS AVANT-PROJET DÉTAILLÉ ET ÉVALUATION ENVIRONNEMENTALE DE PORTÉE GÉNÉRALE RESURFAÇAGE ET RÉFECTION DES PONTS SUR LA ROUTE 101 G.W.P. 410-00-00

L'ÉTUDE

Le ministère des Transports (MTO) a retenu les services de Morrison Hershfield Limited (MH) pour effectuer une étude d'avant-projet détaillé et d'évaluation environnementale (EE) de portée générale pour le projet de resurfaçage et de réfection des ponts sur la route 101, entre Chapleau et Wawa. Ce projet implique la réfection de 7 structures et le resurfaçage d'environ 27,5 km de la route 101.

Les principaux travaux se déroulant dans les limites du projet incluront :

- le resurfaçage de la route 101 à partir d'un point se situant à 14,8 km à l'est de la route 547, en direction est jusqu'à un point se situant à 2,2 km à l'ouest de la route 651, sur une distance d'environ 27,5 km;
- le remplacement des ponceaux à la hauteur de la ligne médiane;
- nettoyage des fossés de drainage;
- la correction des soulèvements dus au gel et des irrégularités;
- le remplacement des parapets;
- la démolition, puis la reconstruction des entrées donnant accès à des propriétés, y compris le virage conique à droite à l'entrée du Parc provincial Potholes.



On prévoit également la réfection des structures suivantes sur la route 101, entre la route 129 et la route 17, tel qu'illustré sur la carte ci-dessus :

1. pont de la rivière Jackpine;
2. ponceau de la rivière Kinniwabi;
3. pont de la rivière Kinniwabi (passage central);
4. pont de la rivière Kinniwabi (direction ouest);
5. pont de la rivière Michipicoten;
6. pont de la rivière Grazing;
7. pont de la rivière Prairie Bee.

LE PROCESSUS

L'étude d'EE s'est déroulée selon le processus de planification établi pour les projets du groupe « B », tel que décrit dans le document sur l'évaluation environnementale de portée générale pour les installations provinciales de transport (2000). Le Rapport d'étude environnementale pour le transport (REET) est maintenant mis à la disposition du public, qui peut le consulter jusqu'au **10 janvier 2011** aux endroits suivants :

Ministère des Transports
Région du Nord-Est
447, avenue McKeown, bureau 301
North Bay (Ontario) P1B 9S9
Tél. : (705) 472-7900

Municipalité de Wawa
40, avenue Broadway
C. P. 500
Wawa (Ontario) P0S 1K0
Tél. : (705) 856-2244

Canton de Chapleau
Centre civique de Chapleau
20, rue Pine Est
C. P. 129
Chapleau (Ontario) P0M 1K0
Tél. : (705) 864-1330

Bibliothèque municipale de Wawa
40, avenue Broadway
C. P. 1730
Wawa (Ontario) P0S 1K0
Tél. : (705) 856-2062

Bibliothèque municipale de Chapleau
20, rue Pine Est
Chapleau (Ontario) P0M 1K0
Tél. : (705) 864-0852

Le public est encouragé à examiner le rapport et à fournir des commentaires. Si, après avoir consulté l'équipe de projet, vous avez encore des questions et/ou des préoccupations, veuillez communiquer avec le ministre de l'Environnement (135, rue St. Clair Ouest, Toronto (Ontario) M4V 1P5) pour réclamer l'application de l'arrêté prévu à la partie II afin que le projet change de catégorie. L'arrêté en question pourrait mener à la préparation d'une EE individuelle. Il faudrait expédier une copie de la requête au MTO et à la firme MH aux adresses ci-dessous. S'il ne reste aucune préoccupation à résoudre au **10 janvier 2011**, ce projet aura satisfait les conditions énoncées dans le document sur l'évaluation environnementale de portée générale pour les installations provinciales de transport. On passera donc à l'étape de la construction sous réserve des approbations et du financement disponible.

COMMENTAIRES

Nous sommes intéressés à entendre vos commentaires ou vos préoccupations à l'égard de l'étude. Veuillez joindre l'un des membres suivants des équipes de projet. Des renseignements en français sont disponible en contactant Leïla Murango (416) 499-3110, poste 1124.

M. Edward Li
Consultant et chargé de projet
Morrison Hershfield Limited
235, boulevard Yorkland
Toronto (Ontario) M2J 1T1
Tél. : (416) 495-4228
Télé. : (416) 499-9658
Courriel :
Eli@morrisonhershfield.com

M^{me} Jennifer Bruin
Urbaniste en environnement
Morrison Hershfield Limited
235, boulevard Yorkland
Toronto (Ontario) M2J 1T1
Tél. : (416) 495-4306
Télé. : (416) 499-9658
Courriel :
Jbruin@morrisonhershfield.com

M. Doug Rivers, P. Eng.
Chargé de projet du MTO
Ministère des Transports
447, avenue McKeown, bureau 301
North Bay (Ontario) P1B 9S9
Tél. : (705) 497-5262
Sans frais : 1 800 461-9547
Télé. : (705) 497-6926
Courriel :
Doug.Rivers@ontario.ca

Note : Le MTO mettra à profit l'information et les commentaires recueillis pour répondre aux obligations prescrites par la Loi sur les EE. Le tout sera conservé au dossier durant l'étude et utilisé dans le respect de la Loi sur l'accès à l'information et la protection de la vie privée. Exception faite des renseignements personnels, tous les commentaires feront partie du dossier public.



INVITATION TO TENDER

Services de santé de
Chapleau Health Services



Meals on Wheels Delivery

Delivery service to provide once a day pick up and delivery of Meals on Wheels Service. Monday to Friday for up to 25 clients per day.

- Contractor will be responsible for pick-up and delivery of meals to persons identified on daily list sheet.
- Pick-up will be located at Chapleau General Hospital at 11:00 am on weekdays (5 days)
- Meals are to be hand delivered to identified clients immediately following pick up
- Price should be indicated for up to 25 meals and then a price per meal after that
- Contractor is responsible for insurance and expenses of their delivery vehicle
- Persons delivering meals must have a criminal reference check.

Bids Received

No later than 12:00pm December 10th, 2010 at Services de santé de Chapleau Health Services P.O. Box 757
6 Chemin Broomhead Rd.
Chapleau, ON
P0M 1K0
Attention: Brad Eagleson – Meals on Wheels

Insurance

Successful bidder must show proof of Liability Insurance and an up to date WSIB Certificate.

For full contract details, please contact Brad Eagleson at 864-3051.

WE RESERVE THE RIGHT TO ACCEPT OR REJECT ANY TENDER RECEIVED.

New Democrats propose tax changes to encourage charitable donations

OTTAWA – New Democrat Deputy Leader and Finance Critic Thomas Mulcair (Outremont) tabled a private member's bill today, supported by National Revenue Critic Carol Hughes

(Algoma—Manitoulin—Kapusking), which would introduce changes to the Income Tax Act to encourage charitable contributions.

The NDP bill would raise the non-refundable tax credit

rate from 29 to 39 per cent for every new donation above \$200 that exceeds the donation given in 2009.

“Through this bill, we ask government to encourage people

across the country to make donations to charities,” said Mulcair. “This would be a very significant help for charities. Their work is extremely important and we should all do what we can to help charities get the support they need to do good work in our communities. We hope that MPs from all parties will rally behind us to pass this bill as fast as possible.”

The total amount of the tax credit cannot surpass the maximum amount already authorized by the Income Tax Act that an individual can ask for during his or her lifetime, which is currently \$10,000.

“Charities often are underfunded. As MPs, we must help those organizations increase their funding,” Hughes added. “This bill is a much needed

legislative response to this underfunding. It will provide help for charities, whose frontline work to help those in need is something we should all encourage.”

Recognizing love and effort

Did you know that there are different non-profit organizations in our province that are really trying to support our students' well being? It takes many helping hands to ensure children in our province attend school well-nourished and ready to learn. Rushed mornings, working parents, school buses, sleepy students, and cold mornings are all different factors that affect our lives in these modern times. How many of us are guilty of skipping breakfast all together because we do not have TIME?

Better


Beginnings (Sudbury office) and Breakfast for Learning Program (Toronto office) are trying to help students to have a good start. They work with specific grocery stores around the province offering funding for breakfast or lunch school programs for schools that apply and qualified.

Our Lady of Fatima School administrators applied on line and qualified to receive specific funding for groceries, and vouchers (Thank you Food Basics, Timmins) to get certain discounts or free products. OLOF

staff's efforts have somewhat multiplied, and another non-profit organization approved their program and has also sent them vouchers to help with the cost of groceries. (President's Choice Charity)

Since October, 2009, the wonderful and dedicated staff at our school has given many volunteer hours to prepare/serve daily nutritious breakfast to the student body. On behalf of the Huron Superior Catholic District School Board, students and families, THANK YOU for your time, support and yummy menu!

**Anthony Pucci, Hons. B. Comm.,
FMA Vice President**



Investment Advisor
1-800-557-2396
Next regular visit to the Chapleau Branch of the Royal Bank will be on

**TUESDAY
December 14th, 2010**

ANTHONY WILL BE PLEASED TO ADVISE YOU ON A WIDE VARIETY OF INVESTMENT SERVICES

- Personalized Financial Planning • Retirement Planning
- Estate Planning • Investment Strategies
- Tax Planning Strategies • Portfolio Analysis
- RSP & RIF Strategies • Mutual Fund Analysis & Investment
- Insurance • Early Retirement Options
- RSP Maturity Options • Global Investing
- GIC's Cds & other Fixed Income Investments
- Interest Rate Protection

RBC Dominion Securities APPOINTMENTS CAN BE MADE BY CALLING 1-800-557-2396

RBC Dominion Securities and Royal Bank are separate corporate entities which are affiliated

For all your needs..



**VENTILATION
HEATING
ELECTRICAL
PLUMBING**

Call the experts at
All North Plumbing & Heating
1405, rue Front, Hearst, Ontario
PH: (800)881-5699



Pimii Kamik Gas Bar & Gift Shop
Located on the Chapleau Cree First Nation

WINTER HOURS
will be from 7 a.m. - 9 p.m., 7 days a week

Drop by and check out our line of Authentic Native Crafts, Unique Gift Ideas, Jewellery, and Gift Certificates TOO!

We also carry road trip snacks, which includes Subs, Chips, Pop, plus a whole lot more.

Your Propane Refilling Station

CLEAN YOUR CHIMNEYS

And check your smoke and carbon monoxide alarm batteries so that we all have a Merry Christmas and a Safe New Year



For any assistance with your smoke detectors please call 864-0830 and leave a message.

Everyone have a safe and MERRY CHRISTMAS FROM THE CHAPLEAU VOLUNTEER FIRE DEPT.

Don't get caught in the red this holiday season: Avoid unnecessary spending



(NC)—Shopping, decorating and festive parties make the holidays the busiest time of year. With so much going on, it's no wonder Canadians commonly lose track of their spending and end up in the red come the first holiday party.

spending any money, consider the following to stay balanced this holiday season:

1. **M a k e a shopping list.** Record everyone on your gift list and how much you can afford to spend on each person.

2. **S h o p w i t h a friend.** MasterCard

Canada reports that

only one-quarter

of Canadians spend between \$21 and \$50 per person. A shopping list will help you stay on track even in the midst of the hustle and bustle of holiday shopping.

3. **S e t a budget.** Only 38 per cent of Canadians say they

create a budget for the holidays. Without a budget you may spend more money than you have. Create a holiday budget in January and stick to it throughout the year.

4. **S e t l i m i t s .** Decide ahead of time how much money you should spend on each gift, decorations and holiday parties. This budgeting technique will keep you in line and make sure you're not over budget before the holidays start!

5. **P l a n f o r t h e party.** Just because you are hosting a holiday

party doesn't mean you need to pay for everything. Ask guests what they can bring – whether it's food, drinks, decorations or games. Everyone will be more than happy to chip in for a potluck celebration.

It's easy to spend a small fortune during the holidays. Before spending, think about ways to save and always make sure you're within budget. For more information about holiday budgeting, visit MasterCard.ca.

For more information about holiday budgeting, visit MasterCard.ca.

For more information about holiday budgeting, visit MasterCard.ca.


Bignucolo Residence Christmas Bazaar

Come join us for our Christmas Bazaar !!

We will be selling a wide selection of Christmas baking, preserves, frozen meals, meat & fruit pies. Participate in our penny sale, 50/50 draw and several raffles. Thank you to the local businesses, family and friends who help support this special event.

DATE: **Thursday, Dec. 9th, 2010** * 10:00 – 7:00
 Friday, Dec. 10th, 2010 * 10:00 – 1:00

LOCATION: Chapleau General Hospital - Bignucolo Residence



Vente de Noël de la Résidence Bignucolo

Joignez nous pour notre vente de Noël !!

Nous allons vendre des sélections de conserves, pâtisseries, repas gelées, pâtés à la viande et tartes aux fruits. Participez dans notre penny sale, tirage 50/50 et plusieurs autres tirages. Merci aux entreprises locales, aux familles et amies pour votre support envers cet événement spécial.

DATE: **le jeudi 9 décembre, 2010** * 10h – 19h
 le vendredi 10 décembre, 2010 * 10h – 13h

ENDROIT: L'Hôpital générale de Chapleau - Résidence Bignucolo

STARTING THE FIRST WEEK OF DECEMBER, ADS AND ADVERTISEMENTS FOR THE CHAPLEAU EXPRESS WILL BE ACCEPTED AT

PURDY'S FLOWER SHOP

Don't Know What To Get That Special Someone For Christmas?

At Gregg's Gas Bar & Horsepower Shop
We have gift certificates for all of your auto care and needs.

Make an appointment to get your no drip
RUST UNDERCOAT
 which prevents rust and corrosion on new and used vehicles.
\$159.99.

While you're there consider getting your vehicle winterized. Check that block heater plug in. Oil change and 21 point inspection for
\$39.99
oil and filter included

Come check out
 our new line of
Hercules Snow Tires
 We Have Tires For All Seasons At A Very Competitive Price

Gregg would like to take this opportunity
 To wish everyone a very safe and happy Christmas!

We would like to extend our special thanks to
 Claude, Karen, Ron, Patty And Steve
 At Chapleau Auto Parts.
 You're keeping us running smoothly!

Working in trades: 'Your ticket to live anywhere'



(NC)—For Brad Doran-Veevers, no two days are quite the same. At 30 years old, he's a professional carpenter and runs his own contracting company, doing everything from demolition to finishing.

"Every day is different for me, and that's part of the reason that it's so enjoyable," says Brad.

Brad didn't always know what he

wanted to do. "After high school, I started a recreation and leisure diploma at Algonquin College, but didn't finish," he says. "After that, I started to work for a renovation company."

Brad eventually went back to college, finished his diploma and completed a co-op term in Whistler, B.C. "Although that was a great learning experience, I soon

realized that it wasn't the path for me," he says. "I went back to the same renovation company, which then led me to my apprenticeship." That apprenticeship led him to a career as a carpenter.

Brad's story is quite common. According to a 2009 report from the Canadian Council on Learning, just under half of college and university students don't follow the traditional path. This could mean attending more than one educational institution, switching programs or subject areas, or leaving school and then returning at a later date. Just over half of post-secondary students graduate from the program and school where they first

began their studies.

Exploring different programs of study can help prospective students make an informed decision. CanLearn.ca provides search tools and information about jobs and wages, schools, and scholarships.

Brad is a big supporter of working in the trades. "The trades are your ticket to live anywhere, travel and work, stay active, and continuously learn," he says. "I have travelled around Canada, and I've worked with people that have been all over the world."

But he knows his college experience helped him get there. "Going to school at 19 is a good experience," he says. "In college or university, they want

you to think for yourself." opportunity to explore, and you get paid to do it."

Still, Brad is the happiest "working on the tools," as he calls it. To explore the possibilities, visit CanLearn.ca/explore.

Chapleau Metis Council

Annual General Meeting
Tuesday December 14th
Christmas Dinner 5:30pm-7:00pm
Meeting 7:00 pm
Royal Canadian Legion
All Metis Nation Citizens / Spouses
Welcome

For More Information Call
David Hamilton 864-0224



Le Conseil de Métis de Chapleau

Assemblée Générale Annuelle
Mardi le 14 décembre
Repas De Noël 17h30-19h00
Légion Canadienne Royale
Tous les citoyens (ennes) métis et leur conjoint sont les bienvenus
Pour de plus amples renseignements appelez
David Hamilton au 864-0224

A Diabetes Education Program can:

- Teach you that orange juice can impact blood glucose levels
- Point out food and medication interactions
- Make living with diabetes manageable
- All of the above

If you don't know about Diabetes Education Programs, they're worth learning about. Through education and encouragement, a Diabetes Education Program provides support and self-management skills to people living with diabetes and those who care for them. Diabetes nurse educators, dietitians and other health care professionals can help people with diabetes lead a more full and healthy life. **You've got health care options nearby. Get to know them better.**

ontario.ca/healthcareoptions • 1-866-330-6206

Paid for by the Government of Ontario



THE LOCAL MARKET PLACE

THE LOCAL MARKET PLACE

CHADWIC HOME, FAMILY RESOURCE CENTRE

Offers shelter, emotional support, and information for women and their children who are in crisis situations. We have a Toll Free Crisis Line which is staffed 24 hours a day. We can arrange for free transportation to the Centre for women who live in the Algoma/Chapleau area. We also offer support to women who live in the communities of Chapleau, White River, Dubreuilville, and Horne-payne through our Outreach Program. Our Outreach Worker travels to those communities to meet with women who need emotional support as well as information about their rights and options. If you need to speak with the Outreach Worker when she is in your community, you can call the Centre at any time to set up an appointment. You do not need to be a resident of the Centre in order to use our services. If you need someone to talk to or if you just need someone to listen, call our Toll Free Crisis line at 1-800-461-2242 or you can drop in at the Centre. We are here for you.

ALCOHOLICS ANONYMOUS Offers help to anyone who desires to stop drinking. Open discussion meeting on Sundays at 2:00 p.m. Trinity United Church basement. Telephone contacts: 864-2786

ALCOOLQUES ANONYMES Offre de l'aide à celui ou celle qui désire arrêter de boire. Les rencontres ont lieu tous les mercredis soirs à 19h (7:00 p.m.) Au sous-sol de l'église Sacré-Coeur. Téléphonez au 864-2786

Narcotics Anonymous offers help to anyone who desires to stop using drugs. Meeting every Thursday 7:30 p.m. Saturday 8:30 p.m. basement Sacred Heart Church. Telephone contact 864-2786.

Alcoholics Anonymous (A.A.) Open discussion meeting every Monday evening. Brunswick House First Nation Band office lounge 7pm. **Narcotics Anonymous(N.A.)** every Tuesday same place same time. NNADAP Worker @ 864-0174 info.

Société Alzheimer Society meetings will be held at the Chapleau Hospital every 1st Monday of each month starting from 7:00 p.m. to 9:00 p.m.

APARTMENTS FOR RENT

Large and beautiful aprtnets at a very reasonable price. One or two bedrooms, fully or semi furnished. Fridge, stove, washer and dryer are included, outdoor balcony, storage shed, private parking, central location. Leave a message at 864-9075. We only have the best. Dec18

Large 1 bedroom apt. centrally located, fridge and stove included, washwer/dryer hook up. Call 864-0677. Leave message. Jan15

1-2 bedroom apts. Fridge and stove, close to downtown. Call 864-1148 or 864-4071(cell) Dec18

Quiet 1 bedroom apt. Practically all furnished. Call 864-2562 and leave a message. Dec4

Large 1 bedroom apartment, new hardwood floors and windows, fully furnished. Heat, hydro, wireless internet and parking included. Looking for a quiet, responsible tenant. Please call 864-1207 for further inquiry and leave a message. Dec11

FOR SALE

4 winter tires used 215-55-17 l pike winter studded. \$500.00. Call Roch's at 864-1477.

GMC Truck 1986 3/4ton 4x4 pickup truck with plow. \$4500.00. **Ford F150** 4x4 1997 extended cab truck. \$500 call 864-2540

2 piece sectional Brown velvet \$300.00. Recliner \$75.00, corner entertainment unit \$150, 27" T.V. \$100, men's skates size 8 \$20, ladies skates size 7 \$20. Call 864-2528.

26 - 32"x27" double glazed vinyl awning windows- \$50.00 each. Washer and dryer \$400.00. Portable dishwasher \$200.00. 30 - 2'x2' patio blocks \$4.00 each. 5 - 5'x4' single pane windows with frame- Great for a porch- \$100.00 each. 1 metal kitchen table \$25.00. Call 864-1438

LOST

Small grey tabby cat. If found or any information, please call 864-1187, \$100 reward. Dec4

Be Wise!
Advertise in
The Chapleau Express

"ANNOUNCEMENT"

The Chapleau Northern Pike ice Fishing Derby has been cancelled for 2011.

Due to circumstances beyond our control the derby committee has unanimously decided that the 2011 derby be cancelled .

Bill Groves
Coordinator Chapleau Northern Pike Ice Fishing Derby

DICK'S CARPENTRY

- book your renovations now
- reasonable rates
- licenced carpenter
- 37 years experience

CALL
705-864-1024
780-278-1670 (cell)

CHRISTMAS TEA Chapleau Senior Citizens Club Saturday



December 4th, 2010
From 2:00 to 4:00 P.M.
Admission: \$3.00
Draw for 50/50 ticket 3:30 p.m.

Cedar Grove Lodge

CLASSIFIED ADS WORK

ALL ADS ARE ACCEPTED AT THE CHAPLEAU INNOVATION CENTRE
DEADLINE FOR RECEIVING ADS IS WEDNESDAY 4:00 p.m.

CLASSIFIED ADVERTISING RATES
Regular Classified Ads
First 25 words or less \$6.25
Each additional word \$0.16+GST
No refunds on cancelled classified ads.

Have a Good Weekend

SLOMA CLEANERS
Drop off at Between Friends (Cedar Grove)
Mon to. Fri. 8 am-noon and 1-4 pm

BERRY'S FREIGHT SERVICES

TIMMINS - CHAPLEAU - TIMMINS

MONDAY TO FRIDAY
1lb. to 10,000 lbs.

FOR QUALITY SERVICES AT INEXPENSIVE PRICES
GIVE US A CALL AT
1-705-264-4334

Alain Bouffard Sales Representative

61 Mission Road
Wawa, Ontario, P0S 1K0
Tel: 705-856-2394
Fax: 705-856-4290
alainbouffard@missionmotors.com



ALLEMANO & FITZGERALD Barristers and Solicitors

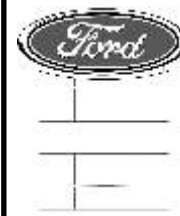
MICHAEL C. ALLEMANO, B.A., L.L.B.
Certified by the Law Society as a Specialist in Real Estate Law

P.O. Box 10,
369 Queen St. E. Suite 103
Sault Ste. Marie, Ontario
P6A 1Z4
Phone (705) 942-0142
Fax (705) 942-7188

P.O. Box 1700,
55 Broadway Avenue,
Wawa, Ontario
P0S 1K0
Phone (705) 856-4970
Fax (705) 856-2713

Northern Lights Ford Sales

Andrew G. McKenzie
11 Years of Service



Highway 17, North
P.O. Box 1033
Wawa ON. P0S 1K0
Bus: 705.856.2775
Fax: 705.856.4862
sales@northernlightsford.ca

BODYLINES BY CRACK LTD.



- 5 Licensed Bodymen
- Insurance Claims
- Windshield Repairs and Replacement



-State of the Art Frame Machine

ALL WORK GUARANTEED
PLEASE CALL 705-856-1406

LVP LABERGE VEINNE & PARTNERS
CHARRIERS ACCOMMODÉS, ACCOMMODÉS
DIVERSES LANGUES ET CULTURES

Professional Services to Northern Ontario for 25 years
Financial Statements for Small Business & Corporations
Tax Returns - Personal, Corporate and Trust/Estate
Personal, Retirement, Estate Financial and Tax Planning Strategies
Business Projections, Plans and Financial Proposals
Computer Consulting
ACCPAC and Quickbooks

1970 Paris Street, Sudbury, Ontario P3E 3C8
(705) 523.0272 (800) 581.7510 www.lvpartners.ca

LVP LABERGE VEINNE & PARTNERS
CHARRIERS ACCOMMODÉS, ACCOMMODÉS
DIVERSES LANGUES ET CULTURES

25 ans de service professionnels pour les entreprises du Nord de l'Ontario
États financiers pour petites et moyennes entreprises et corporations
Rapports d'impôts personnel, de compagnie et de fiducie
Planification financière et fiscale personnelle et de compagnie
Projections financières, plans d'affaires et propositions de financement
Consultation en informatique
ACCPAC et Quickbooks

1970 rue Paris, Sudbury, Ontario P3E 3C8
(705) 523.0272 (800) 581.7510 www.lvpartners.ca

MISSION MOTORS

Vehicle of the Week
2007 Chevrolet Impala LS Sedan
61 Mission Road, Wawa, ON, P0S 1K0
Phone (705) 856-2394

Price: \$15,888.00
Odometer: 38,000km
Interior Colour: BLACK CLOTH
Engine: 3.5 L 6 CYL ENGINE
Fuel: Gasoline
Stock #: 1090U

Body Style: SEDAN
Exterior Colour: DARK GREY
Doors: 4 Door
Transmission: Automatic
Drive: Front Wheel Drive

Description: THIS PACKAGE INCLUDES A SET OF "READY TO INSTALL SNOW TIRES" AND CHECK OUT THESE OTHER GREAT OPTIONS: -STEEL WHEELS -A/C -CRUISE CONTROL - POWER LOCKS AND WINDOWS -ONSTAR -STEERING WHEEL AUDIO CONTROLS -KEYLESS ENTRY -6 CYL ENGINE

NEW AT THE CHAPLEAU PUBLIC LIBRARY
LIBRARY NEWS
2010 Canada Reads titles available at the Library.
NEW MOVIES
Toy Story 3
Charlie St.Cloud
Sex and the City 2
NEW BOOK
The Confession - John Grisham

Now Open Fridays until 8 pm Sundays 12-4 pm

**Columbia
Jackets
20%^{off}**

For Him
**TUXEDO
SHIRTS**
complete with
Black Bow tie,
black buttons
and cuff links

**Boxed
Christmas
Cards
1/2^{price}**

JUST IN For Her
**FUNKY
"MOOSIN AROUND"
SLEEPWEAR**

**JOIN US
SUNDAY
FOR
GOURMET
DU VILLAGE
"Taste Testing"**

Children's
Sorel & Columbia
WINTER BOOTS
25%^{off}

Great Stocking
Stuffers
"Little Miss Matched"
SOCKS
(3 DIFFERENT SOCKS
PER PACK)

For that Special
Someone
GOLD OR SILVER
earrings, bracelets,
necklaces, charms
25%^{off}

(Excluding Dakor Flyer
already at special price)

Jewellery & Watch Repairs
Gift Certificates - Clothing Alterations
Donation Cards - Gift Wrapping
Helium Balloons
Watch Battery Changes
Engraving-Tuxedo Rentals

ENTER OUR DRAW
NECKLACE & EARRING
SET
10kt gold & cubics
value \$450.00



THE SOURCE
BY CHAGUOFF CITY
864-1114

COMPARE - We Won't be Undersold
Chapleau Village Shops
WORKWEAR • FASHIONS • JEWELLERY • GIFTWARE
864-1114

Sears

Catalogue &
Appliance Centre **864-1852**

Celebrate the Season by attending our
HOME FURNITURE GRAND RENOVATION SALE
Friday Saturday And Sunday, December 10, 11, And 12.

During This Event, Ballots Will Be Provided To Every Customer As Well As
A Scratch And Save Card With Up To An Additional
25% Off The Already Low Price In Place
(EXCLUDING APPLIANCES, ELECTRONICS, AND CLEARANCE ITEMS)

FRIDAY SATURDAY AND SUNDAY HOME FURNITURE WILL FEATURE

NO HST

ON ALL FURNITURE, AND MATTRESSES IN STORE.
(excluding appliances,, and electronics)

NO FEE EVENT

12 EQUAL MONTHLY PAYMENTS, WITH HOMECARD PURCHASES, WITH ABSOLUTELY NO FEES.
A great payment option for Christmas shopping.

Draws will be held SUNDAY DECEMBER 12 AT 3:00p.m.



29 Birch St. East

COLLINS HOME HARDWARE
864-1030



51 Birch St. East