

Talk about good coffee!

Miss Muggins  
Coffee and  
Fresh Donuts

# CHAPLEAU EXPRESS

Vol. 13, Issue 46, August 1, 2009

PIZZA HUT & KFC  
There's a Reason  
We're Number 1  
"0 TRANS FAT"  
864-0911



## Monk Street repairs ahead of schedule



Chapleau's gateway will have a more welcoming look in the weeks to come.

The repairs on Monk Street are ahead of schedule and are nearing completion.

The much needed infrastructure improvements commenced in June with a

slated completion for mid to late September.

The replacement of all the sewage and water mains have been completed. The street curbs have all been poured and replacement of the sidewalks is ongoing.

In February 2009, it was announced that the

municipality of Chapleau would receive a \$607,777 provincial contribution towards the Monk Street project. The contribution was part of the Provincial Government's infrastructure investment of 14.3 million dollars.

## Tembec's Co-Generation plant at a standstill



A fire at Tembec's Chapleau 7 MW Co-Generation plant has curtailed its electric power production and reduced lumber drying capacities by 40%.

The fire, which started in or around the lunch room, was extinguished but not before a considerable amount of damage to

the operators controls and main MCC room. There were no injuries to fire fighters or mill personnel during the occurrence. The damages and repair costs are estimated at \$130,000.

Tembec's management team are directing electrical contractors from McKerrow and Sault Ste Marie along with

mill personnel to complete the necessary repairs.

The plant is expected to be operational on or around August 6/09. There are no disruptions anticipated for the Sawmill and Planer departments. The cause of the fire has not been determined at the time of printing this article.

## Improved Eye Care Services for Small Northern Towns

McGuinty Government Invests In CNIB Mobile Unit Upgrades

Residents in small northern communities serviced by the Canadian National Institute for the Blind (CNIB) Medical Mobile Eye Care Unit will benefit from improved diagnostic and treatment services.

The Northern Ontario Heritage Fund Corporation (NOHFC) is providing \$113,250 to improve

the CNIB Eye Van. It will get upgraded medical equipment such as lasers and surgical instruments that will result in better treatment and care. A group of 20 participating ophthalmologists, assisted by two CNIB ophthalmic assistants, use the van to provide vision screening, treat eye conditions and perform minor surgery in small northern communities where local services are not available.

"Our investment is helping deliver needed quality eye care to northern residents in communities where there are no ophthalmology professionals," said Michael Gravelle,

Minister of Northern Development, Mines and Forestry and Chair of the NOHFC. "I am delighted that our government is again working in partnership with the staff of the CNIB Eye Van to provide this much-needed service across the North." added Rick Bartolucci, MPP for Sudbury. From March to November, the CNIB Eye Van logs more than 6,000 kilometres visiting 30 communities to treat about 5,000 patients. In 2005, the NOHFC provided \$141,000 to the CNIB to refurbish its transport truck, upgrade the 48-foot trailer and update some essential diagnostic equipment.

**Long Term Forecast**

**Saturday**  
High 20  
Low 11

**Sunday**  
High 17  
Low 11

**Monday**  
High 16  
Low 11

**Tuesday**  
High 19  
Low 10

**Wednesday**  
High 18  
Low 6

**Thursday**  
High 17  
Low 7

**NORTHERN HAUL CONTRACTING**

SUMMER HEAT GETTING YOU DOWN? NEED SOME COOLING OFF?  
BRING YOUR VEHICLE OR HEAVY EQUIPMENT IN FOR AIR CONDITIONING SERVICE

**Driveway Pavement \$45.00 Square meter**  
Summer special

PLEASE CALL 705-864-1095 TO BOOK AN APPOINTMENT

VISIT OUR WEBSITE [WWW.NORTHERNHAUL.COM](http://WWW.NORTHERNHAUL.COM) FOR A COMPLETE LIST OF OUR SERVICES.

*In-Field service also available!*

**REPORT from  
OTTAWA  
by  
Carol Hughes**

Federal member of Parliament  
Algoma-Manitoulin-Kapuskasing



**Border Woes and Know-How**

The government has recently announced new visa requirements for visitors from Mexico and the Czech Republic. New Democrats see this as an ill-timed blow to Canada's struggling tourism industry and threatens the relationship with one of Canada's largest trading partners.

It is difficult to imagine this coming at a worse time, at the very height of the tourism season. More than 200,000 Mexican tourists visited Canada last year, but now many planning to visit Canada will have to cancel their bookings"

The Canadian embassy in Mexico has already been swamped with Visa applications, temporarily closing its doors in the wake of the announcement.

Despite giving only 48-hours notice for the changes, the Embassy warns on its Web site that new Visa applications will take at least 30-45 days to process.

New Democrats are calling on the government to review this decision and delay any new announcement until after the summer tourism season.

As for Canadians, effective June 1, 2009 anyone

who wishes to cross the border is required to have either a valid passport or a valid trusted traveller program card.

If you only travel by car or boat you could apply for an enhanced driver's licence from the province of Ontario. For further information on how to apply for the enhance driver's licence please visit <http://www.mto.gov.on.ca/english/dandv/driver/enhancedcars.htm>.

For those of you who are interested in obtaining or renewing a passport, the process is relatively easy. To do so you will need:

An application form (can be obtained through: my office, local post office, local Service Canada office, some Service Ontario offices or by visiting [www.passportcanada.gc.ca](http://www.passportcanada.gc.ca)

Two identical passport photos (which must be taken by a commercial photographer or stores who offer this service).

The signature of a guarantor (someone with a valid passport who you have known for at least two years).

Proof of Canadian citizenship.

Documents to support your identity

(such as a driver's license or health card).

The fee (currently \$87).

You can mail your completed package to Passport Canada or drop it off at any of the following offices: Passport Canada, Service Canada or submit it through one of my offices. The processing time varies from two to four weeks depending on how it is submitted.

Don't forget to

**The Chapleau Express**  
P.O. Box 457  
Chapleau (Ont.) P0M 1K0  
Telephone - Fax : 705-864-2579  
e-mail : [chaexpress@sympatico.ca](mailto:chaexpress@sympatico.ca)  
**Published every Saturday/Sunday**  
**Deadline for receiving ads is Wednesday at 4 p.m.**  
The Chapleau Express is delivered free of charge to every household each Saturday. If you have any comments, please feel free to contact us. Subscriptions: **\$75.00 per year (Canada) \$150.00 U.S per year (U.S.A)** Canadian Publications Products Sales Agreement #30183799  
**Ads and advertisements can be dropped off at the Chapleau Innovation Centre Monday to Friday 9:00 a.m. to 4:00 p.m.**

check if you will also need a travel visa. For more information, go to [www.passportcanada.gc.ca](http://www.passportcanada.gc.ca). Enjoy your travels!

**Available locally**

# PRINTING

**Envelopes**  
**Statements NCR**  
**Invoices NCR**  
**Receipts NCR**  
**Business Cards**  
**Draw Tickets**  
**Restaurant Place Mats**  
**Mail Inserts**

**864-1870**  
[jnsigns@gmail.com](mailto:jnsigns@gmail.com)

Make sure your advertising ends up on your customers' kitchen table and not in the garbage containers.....

## ADVERTISE IN THE CHAPLEAU EXPRESS

The Terry Fox Run Organization is looking for a volunteer to coordinate the run in Chapleau. The run day is Sunday September 13, 2009.

Please contact Kim Smith at 1-888-836-9786 ext 227 if you are able to assist.  
Thank You

## Classified ads WORK

### OBITUARY

**Sommers, William "Bill"**

Peacefully at his home on Friday July 3, 2009. Bill, beloved husband of Lorraine, loving father of Victor (Kim), of Calgary, William Jr. (Linda) of Ottawa, Diane Sommers (Rolland) of Ottawa, Daniel (Diana) of Calgary, Daryl (Lyndsay) of Hanover and the late Keith Sommers. Loved Grandfather of Amanda, Bradley, Ryan, Amy, Chrystal, Stephanie, Lindsay, Brandon, Mark, Alysha, Jessie and special great-grandfather of Zoe, Savannah, Emma and Diego. Loving son of Irene and the late Lloyd Sommers. Dear brother of Judy Collins of Sudbury. A Memorial Funeral Service was held at Sacred Heart Church on Friday July 10, 2009. Interment Chapleau Municipal Cemetery. For those who wish, memorial donations to the Heart and Stroke Foundation would be appreciated by the family. Arrangements entrusted to the Gilmartin Funeral Home, Wawa.

August 3rd - 7th, 2009

### VACATION BIBLE SCHOOL

Ages: 4-11

**To be held at:**  
Chapleau Pentecostal Church  
9 Elm Street  
Chapleau, ON

Time: 9:30 a.m. - 12:00 p.m.  
Cost: **FREE**

For more information, please call:  
705-864-0828

### THANK YOU

To all our friends and family who contributed with food, flowers and all donations made to the Heart & Stroke Foundation and special thanks to the Gilmartin Funeral Home and to Ross Broomhead and the Valentine Farm Bed & Breakfast for his generosity.

**Lorraine Sommers**

### GOING TO CHURCH

**SACRED-HEART OF JESUS PARISH**  
PAROISSE SACRÉ-COEUR DE JÉSUS  
26 Lorne Street North  
OFFICE- 21 Lansdowne St.N.  
864-0747  
Sunday/dimanche 9:30 a.m. English  
11:00 a.m. Français  
Weekdays Mon-Sat en semaine Lun-Sam  
**Fr. Jacques Fortin**

**ST. JEAN DE BRÉBEUF (Sultan)**  
Liturgy of the Word  
Liturgie de la parole Every 3rd Saturday 7 p.m. Bilingual  
Tous les 3e samedis 19h Bilingue  
Permanent Deacon Ted Castilloux

**Diocese of Moosonee Anglican Church of Canada**  
**ST. JOHN'S CHURCH**  
4 Pine Street West  
864-1604  
Sunday Service 10:30 a.m.  
Rev. Bruce Roberts

**ST. MARY'S ANGLICAN CATHOLIC CHURCH**  
78 Devonshire Street  
864-0909  
Sunday Service 10 a.m.  
Rev. William P. Ivey

**CHAPLEAU PENTECOSTAL CHURCH**  
9 Elm Street (P.A.O.C.)  
864-0828  
July 5th- Sept.6th  
Sunday A.M. Services 10:30 ONLY  
Pastor Lynn Merriam (Summer Pastor)

**TRINITY UNITED CHURCH**  
Corner of Beech and Lorne  
864-1221 Sunday Service and Sunday School 11:00 a.m.  
Anna Chikoski  
Soup Kettle every 2nd Wednesday of the month  
[www.angelfire.com/on/trinityuc](http://www.angelfire.com/on/trinityuc)

**OUR LADY OF SEVEN SORROWS PARISH**  
PAROISSE NOTRE-DAME-DES-SEPT-DOULEURS (Foleyet)  
Liturgy of the World Sundays 11 a.m.  
Liturgie de la Parole Dimanche 11h  
Mass every 2nd & 4th Sunday at 4:00 p.m.  
Messe sux 2e et 4e dimanche à 16h

**COMMUNITY BIBLE CHAPEL**  
Corner of King and Maple  
864-0470  
Communion Service 9:30  
Family Bible Hour 11 a.m.  
Including Sunday School  
Evening Bible Study and Ladies Bible Study during the week  
Transportation available  
Al Tremblay

# Enjoy a worry-free season of outdoor entertaining

(NC)—Summer in Canada may be fleeting, but while it's here, few can resist the temptation of relaxing with friends and family at an outdoor barbecue. There's nothing quite like enjoying great conversation and the unmistakable, mouthwatering smell of food cooking on the grill either in the backyard, up at the cottage, or out at the park.

While it's great to relax in such an enjoyable setting, it's important to take safety precautions into consideration too. To ensure your gathering is as worry-free as possible, keep these

top tips in mind:

**Food for thought:** Undercooking meat is a common barbecue blunder, since food can char quickly on the outside, appearing "done" while remaining raw inside. Make sure the centre of food is cooked right through – use a meat thermometer to be sure. Always wash your hands after handling raw meat, and use separate barbecue tools for cooked and raw meat, too.

**Be allergy aware:** Enjoying the outdoors means sharing it with different types of allergens like pollen

and insects. Bug bites and contact with certain types of plants, for example, can cause unexpected itching and hives. Keep some allergy medication close at hand for your guests – just in case. "Benadryl is the go-to choice for unexpected allergic reactions, and can start to work in as little as 15 minutes," says allergist Dr. Mark Greenwald. "The brand now offers new topical products with an antihistamine and a skin protectant. Benadryl Itch Spray and Itch Stick provide fast relief from the itch and pain of bug bites, stings and poison ivy." You never know what may hit you, so be prepared!

**Common sense 'cuing:** Cooking around open flames always requires



precautions. Make sure your barbecue is set up away from overhanging plants or nearby structures such as fences, and avoid wearing loose clothing that can dangle over the grill while you're cooking. Most importantly, never leave the barbecue unattended, and don't

try to move it while it's still hot.

**Corral the kiddos:** It's easy to get distracted when you're at an outdoor event, but be sure to always keep an eye on your kids. Don't just assume someone else is watching them or that they're fine playing by themselves. With

backyard pools, hot barbecues and other tempting sights for little eyes and hands, you can never be too careful.

These few simple steps will help ensure your outdoor barbecues are a summer success!

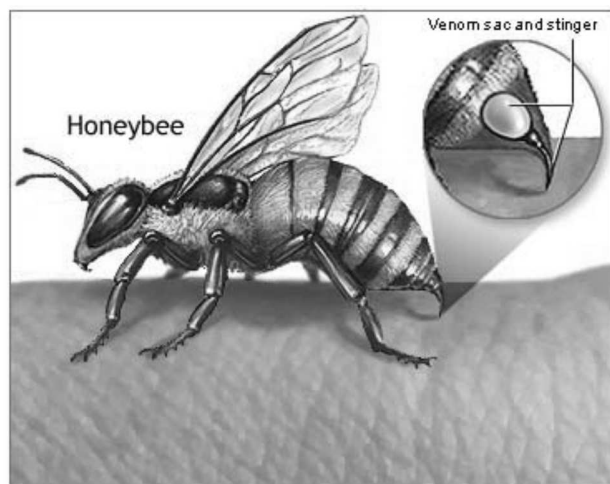
**Roger Carriere of Monuments Carriere**  
(formerly R&F Monuments)  
is inviting all Chapleau residents in need of Monuments, Accessories, Engravings or Repairs to contact him. Roger continues to offer outstanding service to the Chapleau area. Chapleau residents are also invited to visit him at his Sudbury location.

**10% off on all monuments until the end of August**

Call Roger toll free at 1.877.525.7705 between 9:00 a.m. and 4:00 p.m. Roger will be in Chapleau until Sunday, August 2nd. Please call him on his cell at 705-665-5838

[www.monumentcarriere.ca](http://www.monumentcarriere.ca)

## Treating an unexpected allergic reaction



Greenwald offers these tips on what care is needed if you find you or a loved one is experiencing a sudden onset of mild allergy symptoms:

- Remove the person from contact with the allergen, if the allergen is suspected to be something in the air or on the skin.
- Choose the right antihistamine: "For mild to moderate allergic reactions, antihistamines are the first line of defense," says Dr. Greenwald. "Unlike many over-the-counter options, Benadryl is an effective option for treating unexpected allergic reactions."

Benadryl is available in a variety of different formats for both children and adults, so it's prudent to keep some on hand – just in case.

- Soothe skin reactions with cold, wet cloths or ice wrapped in a towel. "New topical antihistamines such as Benadryl Itch Spray and Itch Stick can also provide fast relief from itchiness and pain, and are safe for children over the age of 2," says Dr. Greenwald.
- If the reaction is severe, call 9-1-1 or go immediately to a hospital emergency department. Don't try to wait it out at home!

**Angelo Bucciarelli** - Financial Security Advisor will be in Chapleau Thursday, July 30th to August 4th.

<b>Wealth Creation</b> Retirement Planning Investment Planning	<b>Wealth Protection</b> Life Insurance Planning Living Benefits Estate Organization
--	---

By appointment  
**1-519-852-7676**  
Email: [angelo.bucciarelli@freedom55financial.com](mailto:angelo.bucciarelli@freedom55financial.com)  
Website: [www.angelobucciarelli.com](http://www.angelobucciarelli.com)

(NC)—Unexpected allergic reactions can run the gamut from a mild bout of sneezing and itchy watery eyes to itchy skin and hives. From bug bites to plants and even detergents, it's often impossible to know the cause of a reaction. Allergist Dr. Mark

Ontario Licenced Motor Vehicle Inspection Station		<b>Chapleau Cree Auto/Truck</b> <b>Monday - Friday</b> <b>8:30 a.m - 4:30 p.m.</b> "Preventive Maintenance keeps you on the road" <b>FOX LAKE RESERVE</b>	<b>CALL</b> <b>864-9090</b> for an <b>appointment</b>
--	--	---	--

# Fire up the barbecue this summer and grill...some tofu?



This vegetarian version replaces the pork, lamb or beef traditionally used in a shish kebab with Pete's Tofu n' Sauce.

#### INGREDIENTS

- 1 package of Pete's Tofu n' Sauce\* (either Szechuan or Teriyaki Flavor - 175g), cut into 1 inch pieces
- 1/2 red onion, cut into bite sized pieces
- 1 red bell pepper, cut into bite sized pieces
- 1 green bell pepper, cut into bite sized pieces
- 6 mushrooms
- 6 wooden skewers

After cutting the tofu, drain the remaining sauce into a bowl and set aside. Skewer the ingredients, alternating between the tofu, peppers, onions and

mushrooms, to your own desired combination. You can also use other favourite kebab fixings such as cherry tomatoes or zucchini. Grill the skewers on top of a BBQ or even a Panini grill, brushing the entire kebab with the remaining sauce in the package. Rotate the kebab on the grill until all sides are fully warmed through, approximately 3 minutes each side.

\*Can be substituted with Sunrise Extra Firm Tofu marinated in your favourite sauce

For more delicious summer recipe ideas and lots of tips for preparing tofu, visit [www.sunrise-soya.com](http://www.sunrise-soya.com).



Would you like your business advertised for free on the Chapleau Portal?

The Chapleau Portal is our Town's very own website and we are updating it!

If you wish for your business to be advertised on the Chapleau Portal or if you have any questions please call Krista at 864-1573 or email

at [kmoreau@township.chapleau.on.ca](mailto:kmoreau@township.chapleau.on.ca) with the contact name, number, cell and fax number if available and email address. If you have a web page that you would like added there will be a cost of \$19.00 per year. Please have this information in no later than August 14th 2009.

Aimeriez-vous une publicité gratuite de votre entreprise sur le portail de Chapleau? Le portail de Chapleau est le site web officiel de la municipalité et nous sommes en train de le mettre à jour!

Si vous aimeriez faire annoncer votre entreprise sur le portail de Chapleau, ou encore si vous avez des questions, veuillez appeler Krista au 864-1573 ou envoyez-lui un courriel au [kmoreau@township.chapleau.on.ca](mailto:kmoreau@township.chapleau.on.ca) accompagné de votre nom et de vos coordonnées (tél, cellulaire, fax ou courriel). Si vous disposez de votre propre page web et vous aimeriez l'inclure sur notre site, vous pouvez l'ajouter à un frais de 19.00\$ par année. Veuillez nous faire parvenir ces renseignements au plus tard le 14 août 2009.

### By Amy Snider, Professional Home Economist

(NC)—Nothing spells summer like a good old fashioned BBQ at home with family and friends. Burgers, steaks and hot dogs on the grill are summer classics packed with sizzling taste but they are not always the most calorie-conscious and nutritious meal options. Rather than tossing every time, as a delicious and lean way to add variety to your grill, think about using tofu instead.

Always a

nutritious option, tofu contains no cholesterol or trans fat and is low in sodium and low in saturated fat. It is also a source of calcium and high quality protein, which means that it contains all nine of the essential amino acids we require from our diet. A real time-saver, tofu can be grilled and ready to serve faster than most meat products, shaving minutes off your mealtime prep.

A delicious and fuss-free recipe created by Sunrise Soya Foods which is perfect for those who are new to cooking with tofu is Tofu n'Sauce Kebabs.

**ADVERTISE,  
IT PAYS**

**HAVE A GOOD  
WEEKEND!**

**From  
Chapleau Express**

**Anthony Pucci, Hons. B. Comm.**

Investment Advisor  
1-800-557-2396  
Next regular visit to the Chapleau Branch of the Royal Bank will be on

**TUESDAY  
August 11th, 2009**

ANTHONY WILL BE PLEASED TO ADVISE YOU ON A WIDE VARIETY OF INVESTMENT SERVICES

- Personalized Financial Planning • Retirement Planning
- Estate Planning • Investment Strategies
- Tax Planning Strategies • Portfolio Analysis
- RSP & RIF Strategies • Mutual Fund Analysis & Investment
- Insurance • Early Retirement Options
- RSP Maturity Options • Global Investing
- GIC's Cds & other Fixed Income Investments
- Interest Rate Protection

APPOINTMENTS CAN BE MADE  
BY CALLING 1-800-557-2396

RBC Dominion Securities and Royal Bank are separate corporate entities which are affiliated

For all your needs..

**VENTILATION**

**HEATING**

**ELECTRICAL**

**PLUMBING**

**Call the experts at**  
**All North Plumbing & Heating**  
1405, rue Front, Hearst, Ontario  
PH: (800)881-5699

## The Chapleau Child Care Centre

**would like to assist you**

**to take care of your children while you work, attend school or enjoy that much-needed break.**

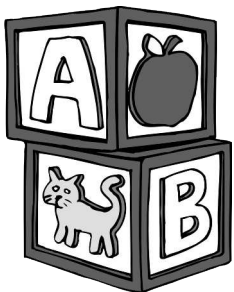
We offer a variety of early learning and care programs for children from birth to twelve years of age.

Services are available in French and English from 7:30 a.m. to 5:30 p.m. Monday to Friday each week.

We also offer different user options, family rates and subsidy.

**Stop by the Centre at 28 Golf Road or call 864-1886 for more information!!**

**Let us be a part of your child's learning experience!**



# Invasive Species

By Steve Memegos



In this week's article I plan on talking about Purple Loose Strife. The first week of August is Purple week, it is to raise awareness to the public about the effects that Purple Loose Strife has on native plants and wildlife.

Purple Loose Strife is a beautiful but an aggressive invader; it arrived in North America in the 1800's and was brought by settlers from Europe for their gardens, seeds were also in the ballast of their ships which used soil to stabilize their ships while they were on the ocean. Since its arrival Purple Loose Strife has spread west

ward and can be found across much of Canada and the United States.

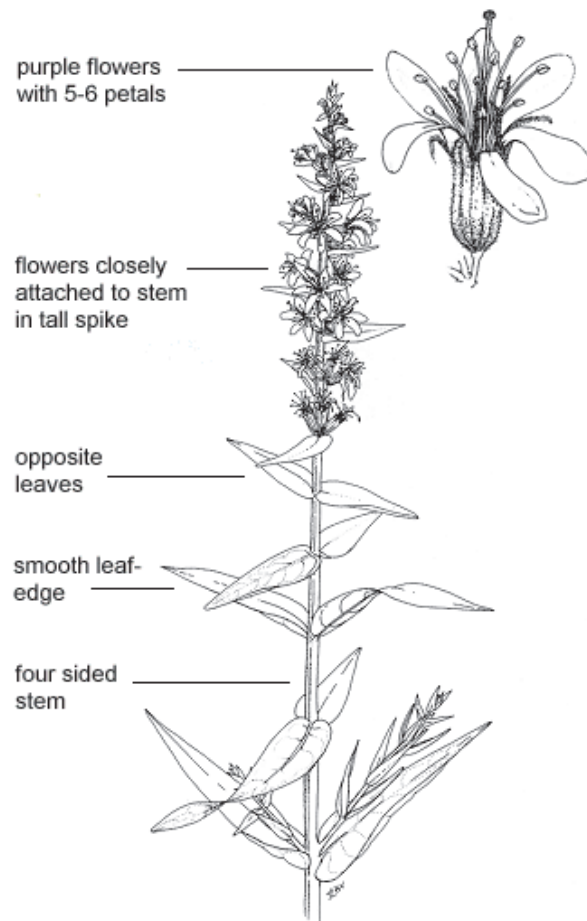
### Characteristics

**Flower:** Each flower is made up of individual flowers that are small and have five to six pink-purple petals surrounding a small yellow center.

Purple Loose Strife usually flowers from late June to early September and requires pollination by birds or insects.

**Seed Capsule:** As the flowers begin to drop off, capsules containing seeds appear in their place. Depending on where in the province you live, plants may seed as early as late July.

**Seed:** A mature plant



Aquatic plant line drawing is the copyright property of the University of Florida Center for Aquatic Plants (Gainesville). Used with permission.

can have more than 30 flowering stems which can produce up to 2.7 million seeds annually. Seeds are as small as tiny grains of sand, and are easily spread by water, wind, wildlife and humans. Germination can happen the following season and in many environmental conditions.

**Leaves:** The leaves on Purple Loose Strife are downy with smooth edges. Which are arranged opposite each other in pairs that alternate down the stalk at 90 degree angles, and they can also be found in groups of 3.

**Stock:** Stalks are square and can be five or six sided, woody, and can be as all as 2 meters (6.5ft) with several stalks on mature plants.

**Perennial Rootstock:** Mature plants can produce vegetatively with underground stems that spread at a rate of 25cm (9.5 in) in one season. The mature plants rootstocks are extensive and can send out up to 30-50 shoots, that creates a web that chokes out native plant life.

**Distribution:** Purple

Loosestrife is found through out North America with the exception of Mexico, Florida, and North Canada. Some of the biggest problems with Purple Loosestrife are in southern Ontario, Quebec, New Brunswick, and adjacent areas in the United States. The plant spread occurs primarily on disturbed soils of recently built roads, canals, railways lines, and cultivated areas. Purple Loosestrife thrives in areas of populated places with connecting road ways and degraded and disturbed wetland habitats. Purple Loosestrife can also invade healthy wetland habitats, and since seeds can spread by water in can also invade the watershed easily spreading to another location.

**Impact:** The Purple Loosestrife plant is a hardy perennial plant that can rapidly degrade wetlands, ruining their value for wildlife habitat. Wetlands are the most biologically diverse, productive component of our ecosystem. Hundreds of species such as, plants, birds,

mammals, reptiles, insects, fish, and amphibians rely on a healthy wetland for their survival. When Purple Loosestrife invades in forms a dense monoculture, replacing native plant species and the habitat where fish and wildlife feed, seek shelter, and reproduce and raise their young.

**Purple Loosestrife** can also invade drier sites, the concern is increasing at the plant becomes more common on agricul-tural land, also invading on farmers' pasture land and crops. Purple Loose has a direct economic impact when it clogs irrigation or drainage ditches on farmlands or cause degradation and loss of forage value of lowland pastures. An estimated 190 000 hectares of wetlands, marshes, pastures, and meadows in North America are affected each year.

**Prevention:** The simplest forms of prevention are to make sure that Purple loosestrife is not growing in your garden and that you don't unintentionally plant it (some wildflower mixes may contain purple loosestrife, so be sure to read the label carefully) The best time to control Purple Loosestrife is in June,

before they seed will also ensure that seeds will not produce future plants. When disposing of the plant it is important to make sure that no seeds contaminate other areas. This can be done by putting the plants in plastic bags that will stay intact in the dump. Incineration is also an option for getting rid of the plant. For large infestations the most effective method of controlling the plant is releasing beetles which are the plants natural predator. The beetles eat the leaves and new shoot growth with affects the growth and seed production of the plant. These beetles will not eradicate purple loosestrife, but will reduce the number of plants and seed production.

In Chapleau and the surrounding area, there are about a dozen confirmed sites with Purple Loosestrife. If you happen to come across any please call the OMNR office to report the location and help us fight the invasion.

If you have any questions about Invasive Species feel free to give me a call at (705)-864-3164 or email at s.memegos@hotmail.com

Or the Invasive Species hotline at 1-800-563-7711



## NOTICE

The Township of Chapleau wishes to advise all citizens that no building inspections will be performed and no building permits will be issued on the following dates:

**August 31 to September 04, 2009.**

If you will be requiring a building permit during this period, please ensure your completed permit application is submitted to this office no later than August 14, 2009.

For more information please feel free to contact the undersigned.

## AVIS

La municipalité de Chapleau tient à avertir tous ses concitoyens qu'il n'y aura pas d'inspection des bâtiments ni d'émission de permis de construire aux dates suivantes : du 31 août jusqu'au 4 septembre 2009.

Si vous avez besoin d'un permis de construire pendant cette période, nous vous demandons de bien vouloir soumettre votre demande dûment remplie au plus tard le 14 août 2009.

Pour plus d'information n'hésitez pas à communiquer avec le soussigné.

Raymond Paquette  
Assistant By-law Enforcement Officer  
Agent-adjoint d'exécution des règlements  
864-1330

--- découpez et gardez ---

### Joujouthèque - Centre de la petite enfance de Chapleau

Un service gratuit pour toutes les familles  
situé au Centre de Garde d'Enfants de Chapleau, 28 chemin golf.  
Pour des renseignements composez le 864-1886.

#### Heures d'ouverture

Lundi	9h30-11h30	13h00-15h30	
mardi	9h30-11h30	13h00-15h30	18h30-20h00
mercredi	9h30-11h30	13h00-15h30	*après-midi de bébés
jeudi	9h30-11h30	13h00-15h30	18h30-20h00
vendredi	9h30-11h30	fermé les après-midi	
samedi	9h30-11h30	13h00-15h00	

\* Les après-midi de bébés sont aussi pour les mamans prénatales

--- Clip and Save ---

### The Chapleau Toy Library/Ontario Early Years Program

A free service for all families  
Located at the Chapleau Child Care Centre, 28 Golf Road.  
For more information call 864-1886.

#### Regular Hours of Operation

Monday	9:30-11:30a.m.	1:00- 3:30p.m.
Tuesday	9:30-11:30a.m.	1:00- 3:30p.m. 6:30-8:00p.m.
Wednesday	9:30-11:30a.m.	1:00 - 3:30p.m. <b>Babies Afternoon</b>
Thursday	9:30-11:30a.m.	1:00- 3:30p.m. 6:30-8:00p.m.
Friday	9:30-11:30a.m.	<b>Closed Friday afternoons</b>
Saturday	9:30-11:30a.m.	1:00-3:00p.m.

\* Babies Afternoon is also for expectant mothers



The safest place to keep your cash is in an open box on your driveway. "NOT" Yet almost every day in the East Algoma Detachment area, people provide easy access to their property by not taking the most rudimentary and common sense approach to protecting their valuables. LOCK IT OR LOSE IT. In East Algoma detachment last year

the O.P.P. investigated 368 thefts. There were 32 vehicles stolen, 79 thefts from motor vehicles and 257 other thefts. So far this year there have been 171 thefts investigated of which 19 vehicles were stolen, 47 vehicles entered and 152 other thefts reported.

In 99% of the thefts from motor vehicle investigations the vehicles have been

## The Number 1 Crime You Can Prevent

left unlocked. How hard can it be to lock a car especially with the automatic door openers most vehicles have these days. Why would anyone leave their keys in their unlocked vehicle? This has also been the case in 90% of all the vehicle thefts investigated by detachment officers. The OPLOCK IT OR LOSE IT campaign is a public education effort which hopes to encourage people to lock up their cars so

these crimes of opportunities do not happen. You may find a card on your vehicle windshield if an officer checks your vehicle and finds it unlocked. Most thieves are lazy and fear the noise of breaking into a vehicle just to rummage through it for change. Why break into a car when your neighbour leaves theirs unlocked. The days of the small town being a safe place to leave your door unlocked in your home

and vehicles are over, if they in fact ever really existed.

Even in your own home do not let others know where you keep your valuables, medication, cash ect. as many thefts from within some homes are committed by acquaintances who gain this information and act on it at a late date.

The other most important thing you can do is to prevent and help solve

property crime is to report to the police any suspicious activity you may see. This can range from people on the street late at night, to a strange vehicle driving slowly through your neighbourhood. You know who normally is about in the neighbourhood. The police do not mind checking out your suspicions, as a crime prevented takes up a lot less valuable police time than a crime that has to be investigated.

## Mike Brown siègera au Comité d'étude des services de santé dans les collectivités rurales et du Nord

### Le gouvernement McGuinty prend de nouvelles mesures pour renforcer les soins de santé dans les collectivités rurales et du Nord

Mike Brown, député provincial d'Algoma-Manitoulin, est nommé au nouveau Comité d'étude des services de santé dans les collectivités rurales et du Nord.

"Notre gouvernement estime que les résidents des collectivités rurales et du Nord méritent d'avoir accès aux meilleurs soins de santé possibles, a déclaré Mike Brown.

Puisque la réalité en matière de santé dans ces collectivités est différente de celle des centres urbains, nous devons mettre en place un cadre de planification des services de santé qui correspond aux besoins des Ontariennes et Ontariens qui habitent dans ces régions.»

Le Comité sera dirigé par Hal Fjeldsted, chef de la direction de l'Hôpital

de Kirkland et du district, qui fera des recommandations au gouvernement sur la meilleure façon de coordonner la prestation de services de santé dans les régions rurales et le Nord de l'Ontario.

Les membres du comité d'étude représentent une gamme étendue d'intervenants et de professionnels de la santé qui tireront parti de leur expérience de travail dans ces régions.

Le comité d'étude mettra en lumière les programmes et services actuels spécialement axés vers les collectivités rurales et du Nord, déterminera les enjeux propres aux régions rurales et au Nord de l'Ontario en matière de soins de santé, et recommandera les mesures que le gouvernement peut prendre pour améliorer l'accès aux soins de santé dans ces collectivités tout en faisant appel aux ressources existantes. Le comité d'étude présentera un rapport et des recommandations au gouverne-

ment cet hiver.

« Nous nous sommes engagés à améliorer l'accès à des soins de santé de qualité pour les gens qui demeurent dans les régions rurales et le Nord de l'Ontario. Les compétences variées des membres du Comité d'étude des services de santé dans les collectivités rurales et du Nord s'avéreront précieuses au fur et à mesure que nous renforçons les soins de santé pour les gens habitant ces collectivités.»

– David Caplan, ministre de la Santé et des Soins de longue durée


"Les collectivités des régions rurales et du Nord font face à des enjeux

difficiles et complexes. Je serai heureux de travailler avec le comité d'étude afin d'élaborer un cadre de planification pour offrir les meilleurs soins de santé possibles dans ces collectivités. Nous avons formé une équipe très représentative afin d'aborder cette tâche importante. Je suis convaincu que tous les membres sauront relever ce défi. – Hal Fjeldsted, président, Comité d'étude des services de santé dans les collectivités rurales et du Nord.

Plus de 4,8 millions d'Ontariennes et d'Ontariens vivent dans les régions rurales de la province, tandis que plus de 780

000 personnes vivent dans le Nord de l'Ontario.

Les travaux du comité renforceront le Programme des services aux régions insuffisamment desservies, un programme provincial qui vise à attirer et à retenir les professionnels de la santé dans les régions insuffisamment desservies en Ontario.



**TOWNSHIP OF CHAPLEAU**  
CHAPLEAU, ONT.

**NOTICE TO TAX PAYERS**

The first instalment of the 2009 Final Tax Billing is due August 7th, 2009.

A 1.25% penalty is imposed for late payment in addition to 1.25% per month per instalment on overdue accounts.

---

**AVIS AUX PAYEURS DE TAXE**

Le premier versement de la facturation finale des impôts fonciers de 2009 est dû le 7 août, 2009.

Une pénalité de 1.25% sera imposée aux paiements en retard en plus de 1.25% d'intérêt par mois au compte qui nest pas payé à temps.

**L. Jones**  
Treasurer/Tax Collector  
Trésorier/Percepteur

**Pimii Kamik Gas Bar & Gift Shop**  
*Located on the Chapleau Cree First Nation*

**SUMMER HOURS**  
will be from 7 a.m. - 10 p.m., 7 days a week

**Drop by and check out our line of Authentic Native Crafts, Unique Gift Ideas, Jewellery, and Gift Certificates TOO!**

**We also carry road trip snacks, which includes Subs, Chips, Pop, plus a whole lot more.**  
Your Propane Refilling Station




Classified ads

**WORK**

**THE LOCAL MARKET PLACE**

**CHADWIC HOME, FAMILY RESOURCE CENTRE**

Offers shelter, emotional support, and information for women and their children who are in crisis situations. We have a Toll Free Crisis Line which is staffed 24 hours a day. We can arrange for free transportation to the Centre for women who live in the Algoma/Chapleau area. We also offer support to women who live in the communities of Chapleau, White River, Dubreuilville, and Hornepayne through our Outreach Program. Our Outreach Worker travels to those communities to meet with women who need emotional support as well as information about their rights and options. If you need to speak with the Outreach Worker when she is in your community, you can call the Centre at any time to set up an appointment. You do not need to be a resident of the Centre in order to use our services. If you need someone to talk to or if you just need someone to listen, call our Toll Free Crisis line at 1-800-461-2242 or you can drop in at the Centre. We are here for you.

**ALCOHOLICS ANONYMOUS**  
Offers help to anyone who desires to stop drinking. Open discussion meeting on Sundays at 2:00 p.m. Trinity United Church basement. Telephone contacts: 864-2786

**ALCOOLIKES ANONYMES**  
Offre de l'aide à celui ou celle qui désire arrêter de boire. Les rencontres ont lieu tous les mercredis soirs à 19h (7:00 p.m.) Au sous-sol de l'église Sacré-Coeur. Téléphonez au 864-2786

**Narcotics Anonymous** offers help to anyone who desires to stop using drugs. Meeting every Thursday 7:30 p.m. basement Sacred Heart Church. Telephone contact 864-2786.

**Société Alzheimer Society** meetings will be held at the Chapleau Hospital every 1st Monday of each month starting from 7:00 p.m. to 9:00 p.m.

**APARTMENTS FOR RENT**

**1-2 and 3 bedroom apts.** and bachelor. For more information call 864-1148 or 864-4071(cell)<sup>Aug29</sup>

**You need a decent apartment** with 1, 2 or 3 bedrooms, fully or semi-furnished, or not, dryer and washer hookups, outdoor balcony, storage shed, private parking. Central location. Call Quality Rental at 864-9075 and leave message.<sup>Aug8</sup>

**Large 1 bedroom apt.** 700 sq.ft. Fridge and stove included. Available Sept. 1st, possibly sooner. Call 864-0677.<sup>Aug8</sup>

**Cabin for rent** in Esher. Hydro included & fridge and stove. Call 864-2471 or 705-362-6624.<sup>Ag1</sup>

**HOUSES FOR SALE**

**House for sale** or available to rent August 1st. 3 bedrooms, 2 bathrooms, finished basement, newly renovated kitchen with heated ceramic tiles. Fridge & stove included. Call 864-1782 for information

**282 Martel Crescent.** Comfortable, spacious home, 4 bedrooms, 2 bathrooms, finished basement with sauna, hot tub, attached 2 car garage on .84 acres of land. Asking \$225,000.00. Call 705-864-0786 or 864-4415

**3 bdr house,** garage, woodshed, electric and wood heat. 8 Pine Park. Call 864-0919.<sup>Ag1</sup>

The Terry Fox Run Organization is looking for a volunteer to coordinate the run in Chapleau. The run day is Sunday September 13, 2009.

Please contact Kim Smith at 1-888-836-9786 ext 227 if you are able to assist. Thank You

**HOUSES FOR SALE**

**PRICE REDUCED. Home for sale on Devon Siding road** 3 bdrm, 2 baths, large eat-in kitchen, dining room, large living room, sunroom, partially finished basement, new roof 2008, 24'x44' heated 2 story garage with workshop and full loft, wood fired boiler, second garage/woodshed approx. 24'x24', greenhouse, mature gardens and more. Can be seen on saultstemarie.kijiji.ca. NOW ASKING \$219,000.00. Will consider all reasonable offers. Call 864-9007 for an appointment to view.<sup>Ag1</sup>

**WANTED**

The Township of Chapleau is continually running short of blue \$1.00 landfill site tokens. Council seeks your cooperation in returning for a cash refund your unused tokens.

**WOOD STOVES**

**For Sale,** New Blaze King Wood Stoves, shipped direct to Chapleau. **For the best prices on Blaze King wood stoves** call Rick Geroux: 705-779-3304. <sup>cta</sup>



**Village Shop Apartment**

Cozy, renovated 2 Bedroom with fridge & stove, secured building, laundry facilities on site. Call Lucy @ 864-1114

**Custom Mugs.... Great Gifts!**



**864-1870**

**FLOOD'S STRAWBERRIES RASPBERRIES & BLUEBERRIES**

**'Pick Your Own or Already Picked'**

**Open 8 a.m. to 8 p.m.**

Take Hwy. 129 to Little Rapids Road. (3 miles before Hwy. 17)

Take Clover Road for one mile. If you're picking, bring your own containers or buy them on location.

**FOR PICKING CONDITIONS OR FOR AN ORDER, CALL 1-705-842-3925**



**NEW AT THE CHAPLEAU PUBLIC LIBRARY NEW BOOKS**

The Forbidden Bk 2 - Beverly Lewis  
The Virgin's Tale - Sherri Smith  
Help Yourself - Dave Pelzer  
Plum Spooky - Janet Evanovich  
Handle with Care - Jodi Picoult  
Execution Dock - Anne Perry  
True Detectives - Jonathan Kellerman  
Death was in the Picture - Linda L. Richards

**SLOMA CLEANERS**

Drop off at **Between Friends (Cedar Grove)** Mon. Fri. 8.30 to 4.30

**BERRY'S FREIGHT SERVICES**

TIMMINS - CHAPLEAU - TIMMINS

MONDAY TO FRIDAY 1lb. to 10,000 lbs.

FOR QUALITY SERVICES AT INEXPENSIVE PRICES GIVE US A CALL AT 1-705-264-4334

**ALL ADS ARE ACCEPTED AT THE CHAPLEAU INNOVATION CENTRE DEADLINE FOR RECEIVING ADS IS WEDNESDAY 4:00 p.m.**

**CLASSIFIED ADVERTISING RATES**  
Regular Classified Ads First 25 words or less \$6.25 Each additional word \$0.16+GST  
**No refunds on cancelled classified ads.**



**I.D. Photos**  
FAC - PAL

**864-1870**

**Travis Gendron**  
Sales Manager

61 Mission Road Wawa, Ontario, P0S 1K0

Tel: 705-856-2394  
Cell: 705-856-5595  
Fax: 705-856-4290

travisgendron@missionmotors.com

**MISSION MOTORS** of WAWA

NEW & PRE OWNED VEHICLE SALES

GM Goodwrench SERVICE CENTER

MISSION MOTORS 24hr TOWING



**ALLEMANO & FITZGERALD**  
Barristers and Solicitors

**MICHAEL G. ALLEMANO, B.A., L.L.B.**  
Certified by the Law Society as a Specialist in Real Estate Law

P.O. Box 10, 369 Queen St. E. Suite 103, Sault Ste. Marie, Ontario P6A 1Z4

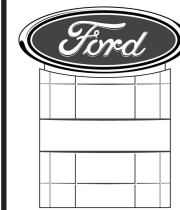
Phone (705) 942-0142  
Fax (705) 942-7188

P.O. Box 1700, 55 Broadway Avenue, Wawa, Ontario P0S 1K0

Phone (705) 856-4970  
Fax (705) 856-2713

**Northern Lights Ford Sales**

**Andrew G. McKenzie**  
11 Years of Service



Highway 17, North P.O. Box 1033 Wawa ON. P0S 1K0  
Bus: 705.856.2775  
Fax: 705.856.4862  
sales@northernlightsford.ca

**BODYLINES BY CRACK LTD.**



-5 Licensed Bodymen  
-Insurance Claims  
-Windshield Repairs and Replacement



-State of the Art Frame Machine

**ALL WORK GUARANTEED**  
PLEASE CALL 705-856-1406



**LABERGE VENNE & PARTNERS**  
PROFESSIONAL CORPORATION  
CHARTERED ACCOUNTANTS and CONSULTANTS  
COMPTABLES AGRÉÉS et CONSULTANTS

**Professional Services to Northern Ontario for 25 years**

Financial Statements for Small Business & Corporations  
Tax Returns - Personal, Corporate and Trust/Estate  
Personal, Retirement, Estate Financial and Tax Planning Strategies  
Business Projections, Plans and Financial Proposals  
Computer Consulting  
ACCPAC and Quickbooks

1970 Paris Street, Sudbury, Ontario P3E 3C8  
(705) 523.0272 (800) 581.7510 www.lvpartners.ca



**LABERGE VENNE & PARTNERS**  
PROFESSIONAL CORPORATION  
CHARTERED ACCOUNTANTS and CONSULTANTS  
COMPTABLES AGRÉÉS et CONSULTANTS

**25 ans de service professionnels pour les entreprises du Nord de l'Ontario**

États financiers pour petites et moyennes entreprises et corporations  
Rapports d'impôts personnel, de compagnie et de fiducie  
Planification financière et fiscale personnelle et de compagnie  
Projections financières, plans d'affaires et propositions de financement  
Consultation en informatique  
ACCPAC et Quickbooks

1970 rue Paris, Sudbury, Ontario P3E 3C8  
(705) 523.0272 (800) 581.7510 www.lvpartners.ca

# Travaux de rénovations domiciliaires : mise en garde du ministère des Services aux consommateurs



(EN)—« Avec le nouveau crédit d'impôt pour la rénovation domiciliaire, la Direction de la protection du consommateur du ministère des Petites Entreprises et des Services aux consommateurs s'attend à une augmentation des plaintes concernant les individus sans scrupule qui essaient de faire un coup d'argent rapide.

« En période de ralentissement économique, il y a

généralement une recrudescence des plaintes contre l'industrie, explique Rick Baldino la Direction de la protection du consommateur. Les gens disent qu'ils ne se laisseront pas avoir par les entrepreneurs véreux. Mais l'expérience prouve le contraire. Il faut vraiment détecter les signes qui indiquent qu'on a affaire à un entrepreneur de rénovations malhonnête. »

Les consom-

mateurs doivent se méfier des entreprises qui envoient un vendeur à leur porte pour leur offrir une bonne affaire s'ils paient comptant. Ils éviteront bien des ennuis s'ils se renseignent et connaissent les droits que la Loi de 2002 sur la protection du consommateur leur donne, notamment :

- Le droit du consommateur de résilier, sans aucun motif, la plupart des contrats signés ou conclus à son

domicile, n'importe quand au cours de la période de réflexion de 10 jours qui suit la réception de la copie du contrat;

- Le droit de résilier une convention si les travaux exigés ne sont pas entamés dans les 30 jours de la date de commencement indiquée dans la convention;

- Une entreprise n'a pas le droit de facturer au consommateur un montant supérieur à 10 % de celui indiqué dans la convention qu'elle a signée avec le consommateur.

Rick Baldino donne également quelques conseils qui éviteront des problèmes aux consommateurs envisageant de faire

des rénovations ou des réparations domiciliaires d'envergure :

1. Demandez au moins trois devis.

2. Obtenez des références de travaux effectués récemment dans le quartier, et vérifiez-les.

3. Obtenez une preuve d'assurance et vérifiez si les entrepreneurs ont un permis.

4. Versez le moins d'arrhes possible — théoriquement moins de 10 pour cent. Ne payez le solde qu'après la réalisation complète des travaux, et si vous êtes satisfait.

« Méfiez-vous des entrepreneurs de rénovations domiciliaires qui promettent

des choses extraordinaires, mais probablement irréalisables! », prévient M. Baldino.

Pour en savoir plus sur les contrats de rénovations domiciliaires ou les droits que donnent les lois ontariennes sur la protection du consommateur, visitez [www.ontario.ca/consumerprotection](http://www.ontario.ca/consumerprotection) ou composez sans frais le 1 866 351-5655.



## Au Canada, les ventes d'écrans solaires aideront la recherche sur le cancer

(EN)—Cette année, la Société canadienne du cancer recevra 2 \$ pour chaque flacon d'écran solaire Neutrogena vendu au Canada, jusqu'à concurrence de

200 000 \$, afin de financer la recherche sur le cancer de la peau. Pour en savoir davantage sur cette campagne, et pour connaître les moyens

de vous protéger contre les rayons nocifs du soleil cet été, consultez les sites [www.Neutrogena.ca](http://www.Neutrogena.ca) ou [www.cancer.ca](http://www.cancer.ca).

**NEW FALL FASHIONS  
ARRIVING DAILY**

**NEW** Athletic Running Shoes  
Now in Stock

*Summer Sale* **CONTINUES ON  
SUMMER FASHIONS**

Closed August 3rd, for Civic Holiday  
**COMPARE - We Won't be Undersold**

**Chapleau Village Shops**

WORKWEAR • FASHIONS • JEWELRY • GIFTWARE

**864-1114**

**Sears**  
Catalogue & Appliance Centre 864-1852

**THE NAPA RALLY 5000  
TEAMS  
WILL BE  
IN TOWN!**

**Come and meet them on  
Thursday-August 20th - 12:30 pm**

At your NAPA Auto Parts Store:

**NAPA** Chapleau Auto Parts & Small Engines  
163 Monk Street  
Chapleau, ON P0M 1K0

[naparally5000.ca](http://naparally5000.ca)