

Talk about
good coffee!
Miss Muggins
Coffee and
Fresh Donuts



CHAPLEAU EXPRESS

Vol. 16, Issue 48, August 11, 2012

PIZZA HUT & KFC
There's a Reason
We're Number 1
"0 TRANS FAT"
864-0911



Chapleau Village Shops celebrate 25 years in business



Shown above is the building housing the Chapleau Village Shops, the Source and the Sears Home Town Store. The building originally housed the T.A. Austin and Co. store in the early 1900's and the Smith and Chapples store in the sixties and seventies.

It seems like only yesterday but it has been 25 years that the Chapleau Village Shops was opened for business.

In 1987, Lucy and Richard Bignucolo purchased the building that once housed the Smith and Chapples department store. The Chapleau Village Shops was born. The store is the true definition of a department store and has served the community well in the last twenty five years.

Striving to bring the latest products to the consumer additional changes, throughout the years, were made to the store.

The Source one of Canada's leading consumer electronics

and wireless retailers is now part of the Chapleau Village Shops along with a Sears Home Town store. This all under one roof.

"During these years, I've had the

privilege of working with some fine staff members and students and I got to know many of our wonderful customers." says co-owner Lucy Bignucolo.

"We've had



our share of frustrations and faced serious challenges. We realize that without the patronage and loyal support of members of this community, success would not have been possible." she

adds. Several breakdowns and water damage over the years didn't deter the owners from continuing their efforts to provide their valuable service to this community.

Chapleau District Family Health Team welcomes new physicians to the Chapleau Medical Centre

The Chapleau and District Family Health team is pleased to welcome the addition of Dr. Kendra Saari, Dr. Stephen Saari and Dr. Doris Mitchell to the Chapleau Medical Centre. Dr. Mitchell and Dr. S. Saari will begin to see enrolled patients effective August 13, 2012. All other patients requesting

healthcare services will be referred to their family doctor or will be directed to seek treatment in the Chapleau General Hospital's Emergency Department.

If you are not currently enrolled with the physician group at the Chapleau Medical Centre and are currently seeking a family physician please contact







Health Care Connect at 1-800-445-1822 to register for the unattached patient database. Health Care Connect is a new program that has been created by the Ministry of Health and Long Term Care to identify and place unattached patients across the province of Ontario with primary care providers. Health Care Connect

will refer people without a family health care provider to physicians who are accepting new patients within their communities. After an individual has registered with Health Care Connect a registered nurse called a Care Connector will be assigned to each unattached patient to assist them in finding a health care provider in

their area. All individuals registering with Health Care Connect must have a valid OHIP card to participate in the program.

If you are enrolled with another family physician and would like to de-roster to register with Health Care Connect please contact 1-888-218-9929.

Long Term Forecast


Friday	High 23 Low 8	
Saturday	High 27 Low 14	
Sunday	High 22 Low 13	
Monday	High 24 Low 11	
Tuesday	High 25 Low 13	
Wednesday	High 24 Low 12	

"The times they are changing here,
the new management has gone CRAZZYYYYY!"

**Now Until The End Of August- Mission Motors Is Selling
(in Stock Only) - 2012 Cars At \$1000 Over Cost
That's CRAZZYYYYY!**

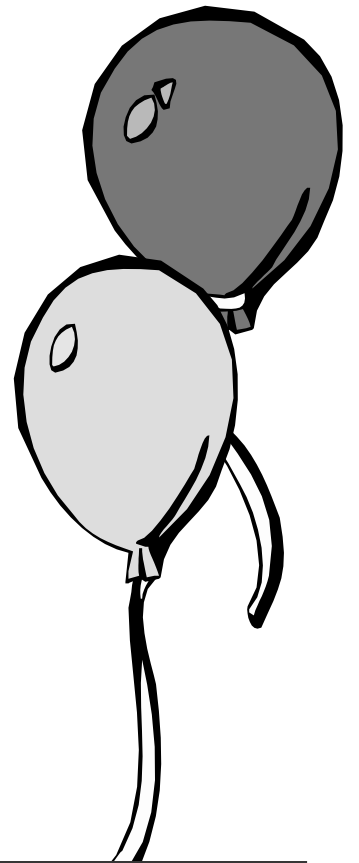
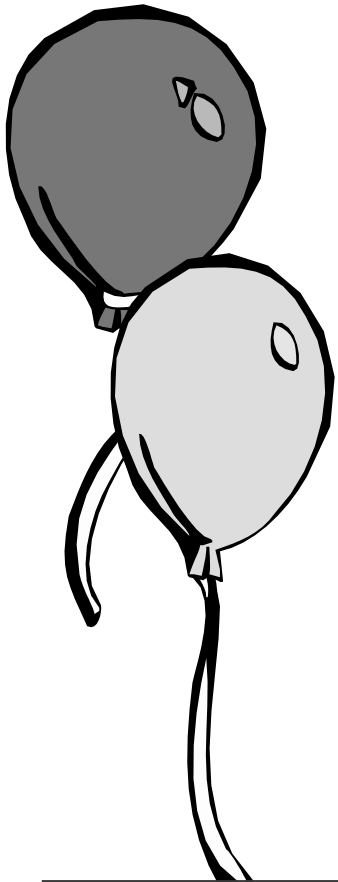
and don't forget 0% financing up to 84 months
on selected models
Call Alain Today

OUR MISSION....IS To Serve You Best



61 Mission Road, Wawa, ON, P0S 1K0
CALL Alain at (705) 856-2394

Celebrating



years in business
JOIN US ON

Aug. 14, 15, 16
For Cake & Lemonade

FREE GIFT
for first
25 customers

FREE DRAWS
for
Children

**CHANCE TO
WIN**
18.5 LED TV
& more

END OF SEASON CLEAROUT
PLUS

25% off all Jewellery and Giftware

*repairs, coffee excluded

NO HST on all Workwear and Workboots

*some exceptions apply

**Wall
Art**

25%^{OFF}

**Sears
Hometown
Store**

**All lawn mowers
now on clearance**

**The Source
Check out
our In-store
Specials**

**Clearance
Shoes**

\$5.00

Other Little Things that we do!

Jewellery & Watch Repairs - Watch Battery Changes - Clothing Alterations - Helium Balloons - Engraving - Gift Certificates
Donation Cards - Gift Wrapping - Tuxedo rentals - Office Supplies - Computer Repairs

Chapleau Village Shops

WORKWEAR • FASHIONS • JEWELLERY • GIFTWARE

864-1114

Sears

HOMETOWN
STORE

864-1852

THE SOURCE
BY CIRCUIT CITY

864-1114

L'ESFCD accueille des nouveaux médecins au Centre médical de Chapleau

L'Équipe de santé familiale de Chapleau et du district est heureuse d'accueillir les docteurs Kendra Saari, Stephen Saari et Doris Mitchell au Centre médical de Chapleau. Les docteurs Doris Mitchell et Stephen Saari commenceront à recevoir des patients inscrits à compter du 13 août 2012. Tous les autres patients demandant des services de soins de santé seront dirigés vers leur médecin de famille ou au service des urgences du

Chapleau General Hospital. Si vous n'êtes pas présentement inscrit auprès du groupe de médecins du Centre médical de Chapleau et que vous êtes à la recherche d'un médecin de famille, veuillez communiquer avec Accès Soins au 1 800 445-1822 pour faire inscrire votre nom dans la base de données des patients sans médecin. Un nouveau programme créé par le ministère de la Santé et des Soins de longue durée, Accès Soins vise à aider les

Ontariennes et Ontariens qui n'ont pas de fournisseurs de soins de santé primaires à en trouver un. Les personnes sans fournisseur de soins de santé familiale sont dirigées vers un médecin de famille qui accepte des nouveaux patients au sein de leur communauté. Le dossier de chaque personne inscrite au programme Accès Soins est confié à une infirmière autorisée, appelée une personne-ressource pour les soins, qui s'occupe d'aider la personne à trouver un fournisseur de soins de santé dans sa région. Toutes les personnes inscrites au programme Accès Soins doivent posséder une carte valide de l'Assurance-santé afin

de pouvoir participer au programme. Si vous êtes inscrit auprès d'un autre médecin de famille et que vous aimeriez vous désinscrire pour vous inscrire au programme Accès Soins, veuillez composer le 1 888 218-9929.

Great Business Opportunity

Owners want to retire

A well established corner store business as well as the Starlite Building.

Please see Diane at the corner store for more details



LEISURE AND CULTURE SERVICES DEPARTMENT

IS NOW ACCEPTING ICE REQUESTS FOR THE 2012/13 SEASON

PLEASE SUBMIT A WRITTEN REQUEST BY AUGUST 24TH, 2012 TO:
**TOWNSHIP OF CHAPLEAU
BOX 129
CHAPLEAU, ON
P0M 1K0
ATTENTION: KEVIN MORRIS**



LE SERVICE CULTUREL ET DES LOISIRS DE CHAPLEAU

ACCEPTE DÈS MAINTENANT LES DEMANDES DE LOCATION DE LA PATINOIRE POUR LA SAISON 2012/13

Veuillez soumettre votre demande en écrit au plus tard le 24 août 2012
**TOWNSHIP OF CHAPLEAU
BOX 129
CHAPLEAU, ON
P0M 1K0
ATTENTION: KEVIN MORRIS**

Invitation to friends

and co-workers of

Richard McAdam

Drop in at the Legion Hall
Saturday, August 25th

To celebrate Frosty's Retirement
Social 7:30 p.m.
Music 9:00 p.m.

REVIEW

Minor Amendment Review Martel Forest 2011–2021 Forest Management Plan

The Ontario **Ministry of Natural Resources (MNR)**, **Tembec** and the **Martel Forest Local Citizens Committee (LCC)** invite you to review the MNR-accepted minor amendment to the 2011–2021 Forest Management Plan (FMP) for the **Martel Forest** and to provide comments.

This amendment provides for:

- The addition of a Primary Road Corridor to the Esher-Healy Link-up Road;
- Alternate access from the Town of Chapleau to Highway 101 West;
- Decreased hauling distance to the Tembec Chapleau Sawmill from harvest allocations west of Chapleau along Highway 101.

How to Get Involved

Minor amendment 11 will be available for review for a 15-day period from **August 11, 2012 to August 25, 2012** at the following locations:

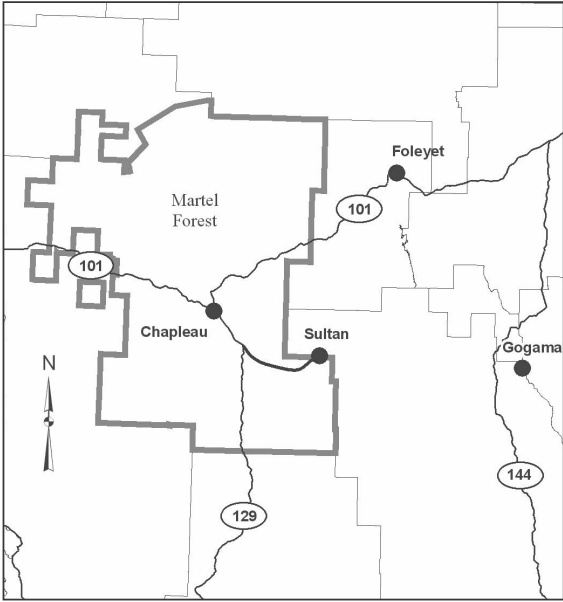
- The MNR public website at ontario.ca/forestplans;
- The Ontario Government Information Centre in Toronto and the appropriate communities of the MNR district and/or area offices provide Internet access; and
- Tembec office, 179 Planer Road, Chapleau, ON Sarah Sullivan, RPF, tel: 705-864-3021.

Comments and/or concerns with respect to this minor amendment must be received within the 15-day review period and no later than **August 25, 2012** by Mike Liukko, RPF of the MNR Chapleau District Office. Further public consultation may be required if significant changes are required as a result of comments, otherwise, following the 15-day inspection period, the minor amendment will be approved. After approval, the amendment will remain on the MNR public website for the duration of the FMP.

During the 15-day review period, you may make a written request to the MNR District Manager to initiate a formal issue resolution process, following the process described in the 2009 *Forest Management Planning Manual* (Part C, Section 6.1.4).

The Ministry of Natural Resources is collecting your personal information and comments under the authority of the *Crown Forest Sustainability Act*. Any personal information you provide (address, name, telephone, etc.) will be protected in accordance with the *Freedom of Information and Protection of Privacy Act*; however, your comments will become part of the public consultation process and may be shared with the general public. Your personal information may be used by the Ministry of Natural Resources to send you further information related to this forest management planning exercise. If you have questions about the use of your personal information, please contact Bill Guthrie at 705-864-1710.

Renseignements en français : 705-864-1710.



have utilities in your dig area. Contact them at least one week before starting your project at www.on1call.com or 1-800-400-2255.

For more event information and sponsorship opportunities contact Maria Doyon at 705-864-3053

The map shows the Forêt Martel area, with locations Foleyet, Chapleau, Sultan, and Gogam marked. Roads 101, 129, and 144 are indicated. A north arrow is present.



We also carry road trip snacks, which includes Subs, Chips, Pop, plus a whole lot more.

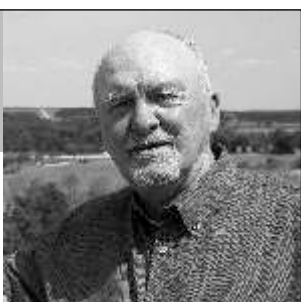
Your Propane Refilling Station



Mrs. Agnes Freeborn organizes successful Chapleau Senior Citizens Club with first executive elected at meeting in park in 1973

Chapleau Moments

by
Michael J. Morris



The enthusiastic response to the week long round of activities during Senior Citizens Week in 1973 resulted in the formation of the Chapleau Senior Citizens Club.

Mrs. Agnes Freeborn was the organizing force behind the formation of the club, and acted as president until an executive could be formed. Mrs. Freeborn called a meeting at the senior citizens park on the site of the old Chapleau High School which was attended by about 40 senior citizens. She gave an outline of what she felt the club could accomplish, adding she felt it was time to "get the ball rolling" and not let the opportunity pass as it had on previous occasions.

The group agreed, and by the end of the meeting an executive had been elected with Mrs. Freeborn declining to accept the position of president.

Mrs. Min Blackburn was elected president while Ernest Gilbert became first vice president and Margaret Costello second vice president. Helen Grout was elected treasurer, Charlie Swanson,

assistant treasurer, Einar Pearson, secretary and Mrs. Mary Mizuguchi, assistant treasurer. Within a year Mrs. Freeborn had become one of the vice presidents.

Two meetings a month were planned, one for business and one for social activities.

Writing in the Sault Star about Senior Citizens Week, Maggie Costello noted that senior citizens had held the spotlight with events that included a bowling evening, a talent show, an evening of cards, a dance, the official opening of the park and a bus trip to Dubreuilville for mass.

Maggie wrote that at the tea, the talent show and the dance, the generation gap just about disappeared which was nice to see. She made special note of the work done by Eileen McCrea and Joan Warren, the coordinators of the week's activities, saying they "did an outstanding job of seeing that their guests were comfortable and happy. They were a busy crew".

Maggie concluded that the dance was the "highlight of the week when the young, the over



Chapleau senior citizens attend party in the park as the finale to Senior Citizens Week in 1973.

40s and the 60s and over mingled gaily and happily and shook a mean foot for all the dances.

"The music provided by the Rhythmaires was a most welcome departure from what we are subjected to most of the time. With everyone well dressed, the young hostesses looking like a bunch of bright flowers, and all out for a merry evening, there prevailed an atmosphere ... of 'the good old days' and missing for some time past."

Through the organizational efforts of Mrs. Freeborn, the club was founded and continued where previous efforts had failed. Active in many aspects of Chapleau life, Mrs. Freeborn was born in Chapleau, the daughter of Mr. and Mrs. J.D. McAdam. Her father, a CPR engineer was the third reeve of Chapleau holding office from 1917 to

1919. Her husband Earle, a CPR freight agent died in office while serving as the 7th reeve in 1938. Her son Elmer served several terms on Chapleau council and another son Earle served as reeve/mayor from 1998 to 2010. On December 1, 1974, the Chapleau Senior Citizens Club played host to the people of Chapleau in their newly renovated Drop In Centre in the basement of Trinity United Church.

Guests were welcomed by Mrs. Freeborn, Mrs. Blackburn, Mrs. Gwen Clegg and Mrs. S. Marcel. The head table was "gaily decorated in a Christmas decor" according to the Chapleau Sentinel.

Presiding at the head table pouring tea were Miss Helen Grout and Mrs. M. Murray. Waiting on tables were Mrs. M. Rioux, Mrs. Ed Riley, Mrs. J. Brownlee,

Mrs. Zita Evans, Mrs. F. Lucas and Mrs. Mary Mizuguchi.

A major highlight of the opening was when the men took over the serving duties. Pouring tea were Willie Fortin and Louis Longchamps while A. Emond, L. Rioux and Peter Blackburn waited on tables.

The kitchen was managed by Mrs. L. Thibault, Mrs. O. Brunette, Mrs. C. Law, Mrs. Rose Ritchie and Mrs. M. O'Hearn.

Rev. William Ivey brought greetings from St. John's Anglican Church while Rev. D. Maclean of Trinity United Church said he was pleased the Seniors were using the

building.

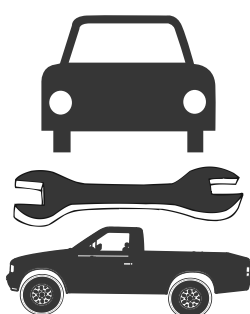
Councillors Dr. G.E. Young, Walter Wilson and Ernie Gilbert were there, and I was too.

The finishing touch to the occasion was the music by Eunice Michaud and her electric piano which was enjoyed by all.

In 1976, club members participated in groundbreaking ceremony for Cedar Grove Lodge, and in 1978, with its completion, the senior citizens moved to the Mrs. Agnes Freeborn Memorial Elderly Persons Centre, in recognition of her efforts in establishing the club. Mrs. Freeborn died on March 3, 1977. My email is mj.morris@live.ca

**COUNCIL MEETING
MONDAY
AUGUST 13th, 2012
OPEN
FORUM
6:00 p.m.**

 **Ontario**
Licenced
Motor Vehicle
Inspection Station



**Chapleau
Cree Auto/Truck**
Monday - Friday
8:30 a.m - 4:30 p.m.
"Preventive Maintenance keeps you on the road"
FOX LAKE RESERVE

**CALL
864-9090
for an
appointment**

THE LOCAL MARKET PLACE

CHADWIC HOME, FAMILY RESOURCE CENTRE. Offers shelter, emotional support, and information for women and their children who are in crisis situations. We have a Toll Free Crisis Line which is staffed 24 hours a day. We can arrange for free transportation to the Centre for women who live in the Algoma/Chapleau area. We also offer support to women who live in the communities of Chapleau, White River, Dubreuilville, and Hornepayne through our Outreach Program. Our Outreach Worker travels to those communities to meet with women who need emotional support as well as information about their rights and options. If you need to speak with the Outreach Worker when she is in your community, you can call the Centre at any time to set up an appointment. You do not need to be a resident of the Centre in order to use our services. If you need someone to talk to or if you just need someone to listen, call our Toll Free Crisis line at 1-800-461-2242 or you can drop in at the Centre. We are here for you.

ALCOHOLICS ANONYMOUS
Offers help to anyone who desires to stop drinking. Open discussion meeting on Sundays at 2:00 p.m. Trinity United Church basement. Telephone contacts: 864-2786

ALCOHOLICS ANONYMOUS
Offers help to anyone who has the desire to stop using drugs/alcohol. Open discussion meeting on Saturday at 7:00 p.m. Pentecostal Church. Call 705-860-9769 for support.

Alcoholics Anonymous (A.A.). Open discussion meeting every Monday evening. Brunswick House First Nation Band office lounge 7pm. Narcotics Anonymous (N.A) every Tuesday same place same time. NNADAP Worker @ 864-0174 info.

Societe Alzheimer Society meetings will be held at the Chapleau Hospital every 1st Monday of each month starting from 7:00 p.m. to 9:00 p.m.

CARS FOR SALE

One Chev Lumina 4 drs. 1995 LLS as is, only 92,829 K. Can be seen at 193 Cherry St. call 705-864-1434. Asking \$1500.00 or best OFFER.

1991 Lincoln Town Car still on the road. As is \$2700.00 firm. Comes with two parts car. 1991 and 1994 Town car. Call 705-864-1870. Leave a message

CAMPING LOTS

Seasonal water front trailer sites available on Mulligan's Bay. Call Lloyd 705-864-1846. Aug25

SEPTIC SERVICES

Chapleau Septic Services available. Call 864-1114 to arrange time. cont.

WANTED

To **purchase winterized cottage** or home with power for year round living near water within 30 km of Chapleau. Call 705-864-1870 and leave message.

**COUNCIL MEETING
MONDAY
AUGUST
13th, 2012
OPEN
FORUM**

**Have
a
Good
Weekend**

SOCCERFEST 2012

Registrations now open for the following events:
-Recreational Soccer matches
-Youth Soccer Skills Training Camp
-R/C Vehicle Show
-All-Star Skills Competition
Age Groups: 5&6, 7-9, 10-14, 15+ (Adults)
Other planned activities: Sandbox Obstacle Course Contest, Blindfold Dribbling, Ultimate Dodgeball, and more!

Once again, there is no fee to enter. Space is limited, please register ASAP. Registration not required to attend the BBQ, to spectate, or the other, mini-activities.

Visit www.chapleausoccer.ca and click on the link "Register for SoccerFest 2012"

You can also visit the Chapleau Village Shops and ask for Tim to receive a registration form.

Volunteers needed!

Located downtown area
3 bedroom house
Large back yard
Large closed in front porch
Very Clean
First and last months rent
\$625.00 + utilities
References if available
non smokers - no pets
Available September 1st, 2012
Call 705-864-1071

**Watch your Photo
Album on TV**
Pay-Per-Scan Photo Scan
Service

\$19.95 per DVD

600 DPI Scans
+ 19¢ per scan
(Highly Recommend)

Express Scanning
+ 27¢ per scan
(Scanned and delivered
within 2 business days)

+ 12¢ per photo Free DVD Label
Scanning in Order + 17¢ per scan
Photo enhancement +17¢ per scan
Image Rotation - extra 6¢ per scan
Dual Side Scanning
(doubles final scan count)

Extra DVDs **\$19.95**
(Volume Discounts Available)
HST extra



705-864-1870

Peak Roofing

Shingle installation and repairs
Soffit & Fascia, ventilation

705-864-2602
peakroofing@mail.com

BERRY'S FREIGHT SERVICES

TIMMINS - CHAPLEAU -
TIMMINS
MONDAY TO FRIDAY
1lb. to 10,000 lbs.

**FOR QUALITY
SERVICES AT
INEXPENSIVE PRICES**
GIVE US A CALL AT
1-705-264-4334

SLOMA CLEANERS

Drop off at Between
Friends (Cedar Grove)
Mon to. Fri. 8 am-
noon and 1-4 pm

ALL ADS ARE
ACCEPTED AT
DENISE'S FLOWER
SHOP

DEADLINE FOR
RECEIVING ADS IS
WEDNESDAY 4:00 p.m.

**CLASSIFIED
ADVERTISING
RATES**

Regular Classified Ads
First 25 words or less \$6.25
Each additional word \$0.16+GST

**No refunds on
cancelled
classified ads.**



NEW AT THE CHAPLEAU PUBLIC LIBRARY NEW BOOKS

Leaving Unknown - Kerry Reichs
The Best Day of Someone Else's Life

Kerry Reichs

Eat to Live

Joel Fuhrman, M.D.

The Pill Book - Harold M. Silverman, Pharm. D.
The Truth About Statins - Barbara H. Roberts, M.D.
Jana Bibi's Excellent Fortunes - Betsy Woodman
The Killing Moon - N. K. Jemisin

Alain Bouffard
Sales Representative
61 Mission Road
Wawa, Ontario, P0S 1K0
Tel: 705-856-2394
Fax: 705-856-4290
alainbouffard@missionmotors.com

**MISSION
MOTORS** WAWA

NEW & PRE OWNED
VEHICLE SALES

Goodwinch
SERVICE CENTER

WAWA MOTORS
24hr TOWING



ALLEMANO & FITZGERALD

Barristers and Solicitors

MICHAEL C. ALLEMANO, B.A., L.L.B.
Certified by the Law Society as a Specialist in Real Estate
Law

P.O. Box 10,
369 Queen St. E. Suite 103
Sault Ste. Marie, Ontario
P6A 1Z4
Phone (705) 942-0142
Fax (705) 942-7188

P.O. Box 1700,
55 Broadway Avenue,
Wawa, Ontario
P0S 1K0
Phone (705) 856-4970
Fax (705) 856-2713

Northern Lights Ford Sales

Andrew G. McKenzie
11 Years of Service



Highway 17 North
P.O. Box 1033
Wawa, ON. P0S 1K0
Business 705-856-2775
Fax 705-856-4862
sales@northernlightsford.ca

BODYLINES BY CRACK LTD.



✂ 5 Licensed Bodymen
✂ Insurance Claims
✂ Windshield Repairs
and Replacement
✂ State of the Art Frame



ALL WORK GUARANTEED
PLEASE CALL 705-856-1406

NASA Lands Car-Size Rover Beside Martian Mountain



PASADENA, Calif. -- N A S A ' s most advanced Mars rover Curiosity has landed on the Red Planet. The one-ton rover, hanging by ropes from a rocket backpack, touched down onto Mars Sunday to end a 36-week flight and begin a two-year investigation.

The Mars Science Laboratory (MSL) spacecraft that carried Curiosity succeeded in every step of the most complex landing ever attempted on Mars, including the final severing of the bridle cords and flyaway maneuver of the rocket backpack.

"Today, the wheels of Curiosity have begun to blaze the trail for human footprints on Mars. Curiosity, the most sophisticated rover ever built, is now on the surface of the Red Planet, where it will seek to answer age-old questions about whether life ever existed on Mars -- or if the planet can sustain life in the future," said NASA Administrator Charles Bolden. "This

is an amazing achievement, made possible by a team of scientists and engineers from around the world and led by the extraordinary men and women of NASA and our Jet Propulsion Laboratory. President Obama has laid out a bold vision for sending humans to Mars in the mid-2030's, and today's landing marks a significant step toward achieving this goal."

Curiosity landed at 10:32 p.m. PDT Aug. 5, (1:32 a.m. EDT Aug. 6) near the foot of a mountain three miles tall and 96 miles in diameter inside Gale Crater. During a nearly two-year prime mission, the rover will investigate whether the region ever offered conditions favorable for microbial life.

"The Seven Minutes of Terror has turned into the Seven Minutes of Triumph," said NASA Associate Administrator for Science John Grunsfeld. "My immense joy in the success of this mission is matched only by

overwhelming pride I feel for the women and men of the mission's team."

Curiosity returned its first view of Mars, a wide-angle scene of rocky ground near the front of the

rover. More images are anticipated in the next several days as the mission blends observations of the landing site with activities to configure the rover for work and check the performance of its instruments and mechanisms.

"Our Curiosity is talking to us from the surface of Mars," said MSL Project Manager Peter Theisinger of NASA's Jet Propulsion Laboratory (JPL) in Pasadena, Calif. "The landing takes us past the most hazardous moments for this project, and begins a new and exciting mission to pursue its scientific objectives."

Confirmation of Curiosity's successful landing came in communications

relayed by NASA's Mars Odyssey orbiter and received by the Canberra, Australia, antenna station of NASA's Deep Space Network.

Curiosity carries 10 science instruments with a total mass 15 times as large as the science payloads on the Mars rovers Spirit and Opportunity. Some of the tools are the first of their kind on Mars, such as a laser-firing instrument for checking elemental composition of rocks from a distance. The rover will use a drill and scoop at the end of its robotic arm to gather soil and powdered samples of rock interiors, then sieve and parcel out these samples into analytical laboratory instruments

inside the rover.

To handle this science toolkit, Curiosity is twice as long and five times as heavy as Spirit or Opportunity. The Gale Crater landing site places the rover within driving distance of layers of the crater's interior mountain. Observations from orbit have identified clay and sulfate minerals in the lower layers, indicating a wet history.

The mission is managed by JPL for NASA's Science Mission Directorate in Washington. The rover was designed, developed and assembled at JPL.

For more information on the mission, visit: <http://www.nasa.gov/mars>



PART-TIME EMPLOYMENT OPPORTUNITY

The Leisure and Culture Services Department is seeking canteen workers and skate patrol for the 2012-13 winter operation.

Canteen Workers

Positive skills will include:

- Must be at least 15yrs old
- Professional mannerism
- Willing to work evenings and weekends as required
- Ability to multi-task

Skate Patrol

Positive skills will include:

- Must be at least 16yrs old
- Professional mannerism
- Willing to work Tuesday & Friday night public skating sessions

Resumes will be accepted by the undersigned until **4:30pm, Friday August 24, 2012.**

Mr. Kevin Morris
Leisure & Culture Services Department
P.O. Box 129
Chapleau, ON
P0M 1K0



OFFRE D'EMPLOI À TEMPS PARTIEL

Le Service de la Culture et des Loisirs de Chapleau a besoin de préposé-e-s à la cantine et de surveillants de patinoire pour la saison hivernale 2012-13.

Préposé-e-s à la cantine

Parmi les compétences recherchées:

- être âgé-e d'au moins 15 ans
- avoir de l'entregent
- être disposé-e à travailler en soirée et les fins de semaine sur demande
- capable d'assumer une multiplicité de tâches

Surveillant-e-s de patinoire

Parmi les compétences recherchées:

- être âgé-e d'au moins 16 ans
- avoir de l'entregent
- être disposé-e à travailler lors des séances de patinage du mardi et du vendredi soir.

Prière d'acheminer son curriculum vitae au soussigné au plus tard le **vendredi le 24 août 2012 à 16h30.**

M. Kevin Morris
Service de la Culture et des Loisirs
C.P. 129
Chapleau (Ont)
P0M 1K0



The Chapleau Child Care Centre de Garde d'Enfants

would like to take this opportunity to remind drivers about young children playing outside during the summer months.

Please be sure to drive carefully through our neighbourhoods to protect our youngest citizens and to ensure everyone has a great summer!

the target landing area for Curiosity, the rover of NASA's Mars Science Laboratory mission, is the ellipse marked on this image, about 12 miles long and 4 miles wide (20 kilometers by 7 kilometers).