

Talk about good coffee!
Miss Muggins
Coffee and
Fresh Donuts

CHAPLEAU EXPRESS

Vol. 17, Issue 30, April 6, 2013

PIZZA HUT & KFC
There's a Reason
We're Number 1
"0 TRANS FAT"
864-0911



Local Ratepayers association formed

At a public meeting held at the Legion Hall on Tuesday, April 2, 2013 a ratepayers association was formed and will be

incorporated in the next few weeks.

Tom Prue was elected as president, Ron Cook as Treasurer and Mario Lafreniere as Secretary.

The committee will consist of Richard Beaudoin, Michael Levesque, Suzanne Santerre, Joe Anglehart and Rémi Poulin.

The Ratepayers Association will act as a much needed voice for the local taxpayers.

To make this endeavour successful each and every Chapleau taxpayer need to get involved in one way or another. Attending council meetings is probably

first and foremost on the list.

A more equitable taxation system, a reduction in wasteful practices and an increase of accountability to the taxpayers were some of the subjects discussed.

Possible missteps and inactions in the case of abandoned properties and tax arrears are all factors leading to tax hikes and they have to be addressed.

Some property owners that have no services such as water, sewage and snow removal are paying in excess of \$5000.00 in taxes. The only service that they have is refuse collection which is paid separately. Something is amiss!

A common denominator in most of the discussions certainly was the Municipal Property Assessment Corpora-

tion of which every municipality in Ontario is a member.

Their mandate is to provide its customers - property owners, tenants, municipalities, and government and business stakeholders - with "consistent and accurate property assessments."

Further information will be provided in upcoming issues of the Chapleau Express.

Canada Day meeting

The sky is grey, featureless. A cold, north wind lifts snow into white sheets while freezing the numerous ponds dotting the street. Yes, spring is here! And soon, Canada Day once again.

Committee will hold a public meeting on Tuesday, April 16th at 7:00PM in Council Chambers. Purpose of the meeting is to give everyone interested opportunity to suggest and discuss activity ideas.

Keeping its promise The Leisure and Cultural Services

Have an idea? Want more to do? See you on April 16th!

Bishop Tom Corston receives Queen's Jubilee Medal

Rt. Rev. Thomas A. Corston, Bishop of the Anglican Diocese of Moosonee, was presented with the Queen's Jubilee Medal by the Ontario Command of the Royal Canadian Legion on April 13.

Chapleau, the son of Frances (Jardine) and the late Henry Corston, serves as Chaplain to the Ontario Command of the Legion. For many years, he was the padre of Legion Branch 72 in Sudbury, when he was rector of the Church of the Epiphany.



He was elected Bishop of Moosonee in 2010. St. John's Anglican Church, which he attended, is part of the diocese.

Upon learning the news, Bishop Corston posted on his Facebook page: "Just been informed that I am to be presented with the Queen's Jubilee Medal by the

Ontario Command of the Royal Canadian Legion on April 13th. Very humbling. I am mindful of the sacrifices made by my father, wounded at Caen, France in 1944 and all Veterans past and present."

"At the going down of the sun and in the morning, we will remember them", he added.

Resident acknowledged for long time service



Shown above is OPP Sergeant Straun Frederiksen presenting Nellie Mitchell with a clock in recognition of Nellie's long time services with the Chapleau Community Policing Committee.

Long Term Forecast

Friday
High -1
Low -5

Saturday
High 0
Low -4

Sunday
High 2
Low -1

Monday
High 1
Low -3

Tuesday
High 3
Low -1

Wednesday
High 4
Low -1

SPRING FEVER HAS HIT MISSION MOTORS

Purchase Or Lease A Car Or Crossover
In The Month Of March and
0% Receive a \$500 Gas Card **72**

and don't forget about
0% financing up to 72 months on select models

Come In And See The Sales Team At Mission Motors Today



61 Mission Road, Wawa, ON, P0S 1K0
Phone (705) 856-2394

George Lockhart Evans 1934 - 2012

A compassionate teacher who inspired a small northern community



By Mac Evans

In the fall of 1961, at the age of 27, George Lochart Evans began his high school teaching career in Chapleau, a northern Ontario community of 3000 people located on the CPR mainline. Born in Vancouver in 1934 and raised in Sarnia, Ontario, the road to Chapleau for George was very convoluted. In Sarnia he developed a keen interest in world events (particularly ancient Greek history) and honed his skills as an orator and writer. He became a member of the

Progressive Conservative Party at the age of 15 and wrote numerous letters to world leaders (including President Truman and then External Affairs Minister Lester Pearson). He won a speaking contest in the Rotary Club's "Adventure in Citizenship" program, earning a trip to Ottawa to see how the federal government worked. With this activist background, George decided to become a lawyer and enrolled in the University of Toronto in 1952.

University life was not kind to George.

It would eventually take him nine agonizing years with four enrollments at three universities to complete his Bachelor of Arts degree in 1961. During this time he spent fourteen months bicycling around Greece. It was a major turning point in his life. In his own words: "Greece made me a coherent person with a set of values. To be aware of what human life is and what it may be is the great gift of Greece." It was in Greece that George "found himself", became a humanist, developed his life-long passion for helping others, and decided to be a teacher.

Graduating in an era of teacher scarcity where he could have taught at almost any school in Ontario, George chose Chapleau because it was a small community where he felt he could make a significant difference in the lives of the town's youth. He taught English, History and Geography. History was his favourite subject and his infectious approach, sprinkled with his own experiences in Greece, made history come alive. He used history to sensitize his students to

the plight of the world's disenfranchised peoples. His compassion for his fellow man, regardless of politics, race, religion or language was stitched into his lessons. George shared his vast treasure of art books and priceless artefacts with his students and took several students with him on his many summer trips back to Greece. He established an award for excellence in history and was instrumental in the founding of the "Homework Club", an after-class venue that made doing homework fun. He fostered amateur theatre, established a Chess Club and, at his own expense, drove team members to tournaments further south in the province.

George was also very involved in community life. He served on the Township Council for four years, was a long-time member of the Library Board, and an active member of the local Rotary Club. He contributed numer-

ous articles to the local paper on the history of Chapleau. But perhaps his most lasting contribution to Chapleau was his response to a tragic situation when twelve local children were suddenly left without a father and threatened with dispersal to the four winds. He threw open his doors and welcomed them in – eventually legally adopting one of the sons. Overtime, several of the boys moved into his house, ate his home-made food, claimed bedrooms, and brought friends home, causing George to personally excavate his basement to provide more living space. He supplied this extended family with hockey gear, skates and skis and drove them to tournaments around northern Ontario. Later on, he funded the "Grandpa George" scholarships for all of their offspring that pursued higher education.

In 1989, after teaching in Chapleau for 28 years, George retired to Sarnia to help his ageing parents stay in their family home. He selflessly looked after

them for fifteen years. In 2005, after both parents had passed away, George returned to live in Chapleau. Once again, his house was open to those in need, including distant relatives of his original "children".

On March 28, 2012, George started the day-long drive from Chapleau to Sarnia to say goodbye to his sister-in-law who was losing her fight with cancer. He was to give her eulogy. An hour out of Chapleau, on the twisting and turning Highway 129, George was killed instantly when his car crossed the centreline and crashed into a transport truck. He was 77. The citizens of Chapleau were in shock. The local paper carried two pages of testimonials from former colleagues and students commenting on the enormous impact George had had on their lives. In his honour, the Chapleau Library was renamed "The George Lockhart Evans Library". George's sister-in-law died two weeks later, not knowing he had predeceased her.



Montreal-born Wendy Farha is a singer, songwriter, musician, comedian and speaker. She has been delighting audiences for more than 34 years with her hilarious comedy, stunning vocals and poignant songs.

Wendy was diagnosed with clinical depression in 2000 and then with breast cancer in 2009. She now tours Canada, sharing her talents, teaching workshops on depression and speaking of how to overcome life's obstacles with faith and courage.

Come hear this woman's remarkable story and see how sadness and despair can be turned into hope and joy!

Two special events with

Wendy Farha!

Wed, April 10/2013 @ 7:00 p.m.
Cake, Coffee & Comedy!

A delightful evening of music, comedy, laughter & yummy desserts!!

Admission: Donation

Thurs, April 11, 2013 @ 7 pm

The Depression Awareness Seminar

Are you battling depression? Do you know someone who is?

Don't miss this important informational evening!

Admission: Free

Chapleau Pentecostal Church

9 Elm Street, Chapleau
Info: 705-864-0828

Visit Wendy at:
www.wendy.ca



We are currently seeking qualified candidates for the following positions

SUMMER STUDENTS EMPLOYMENT OPPORTUNITIES (all positions are contingent on funding)

Services de santé de Chapleau Health Services is seeking highly motivated students to fill the following summer positions (full-time hours).

Registered Nurse Students

-assist Registered Nurse in all patient care activities within scope of practice i.e. emergency care, oncology and acute care.

Registered Practical Nurse Students

- assist Registered Practical Nurse in all patient care activities within scope of practice i.e. long-term care, acute and outpatient clinics.

Activation Assistants

-work in the Activation Department to provide therapeutic activities to long-term care residents.

Supported Independent Living Assistant

-assist the Supported Independent Living Worker in planning, developing, and implementing creative activities for developmentally disabled adults.

Maintenance Assistant

- assist with the maintenance of SSCHS Facilities, buildings interior/exterior, equipment, grounds, vehicles and furniture.

Qualifications

- Must be between 15 and 30 years of age.
- Must be planning to return to school in the fall.

Interested applicants may submit résumés by April 26th, 2013

Human Resources
Services de santé de Chapleau Health Services
6 Broomhead Road, P.O. Box 757
Chapleau, Ontario
P0M 1K0

Tel: (705) 864-3061

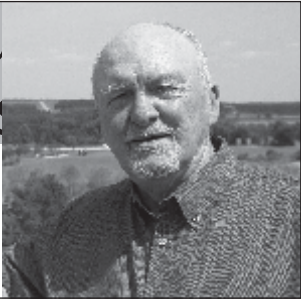
Email: chapleuhr@sschs.ca

We thank all applicants for their interest, but only those selected for an interview will be contacted.
All applications received will be held strictly confidential.
Cet avis est disponible en français.

Early look of Chapleau shows Canadian Pacific Railway buildings shared similar characteristics, Ian Macdonald writes

Chapleau Moments

by Michael J. Morris



Here is Part Two of Ian Macdonald's fascinating look into the early years of Chapleau buildings built by the Canadian Pacific Railway when it arrived at the community and it was established as a divisional point. Ian, who worked for the CPR, and attended Chapleau Public and Chapleau High schools, is retired professor of architecture and professor emeritus at the University of Manitoba. Thanks so much Ian. MJM

By Ian Macdonald

The first generation of CPR buildings shared similar characteristics

regardless of whether the building was a depot, boarding house, two storey houses or a bungalow. The east façade of the original Chapleau CPR depot illustrating their distinctive architectural features. The station was painted many different colours during 24 years of service. The diagram indicates the final paint scheme before the building was relocated to Monk Street.

The first buildings in Chapleau consisted of a boarding house eventually called "The Pig's Ear" and six housing units which together became known as "Cottage Row". These buildings ranging from

a three storey boarding house to single storey bungalows all incorporated the same wood frame construction method, exterior wood siding and distinctive features of the T-1 depots including double hung windows, gable end trusses and window canopies. They were, like the CPR depot, also built on similar types of concrete surface foundations to avoid the cost and time involved in building full basements.

Most people would probably expect new buildings to face a street. The buildings on Cottage Row for some odd reason were built facing south towards an open field and the new CPR round house while turning their backs and backyard fences on to Birch Street, which was to become Chapleau's main street. The result of this was that the south side of Birch Street was lined with fences extending from Young Street all the way to

where the Fox theatre was eventually built.

This unfortunate condition would last for the next fifty years and may account for the fact that most of the early photographs and post cards of Chapleau's main street were always of the north side. The Algoma Dairy began to make things right when it was built facing Birch Street on the site of the Pig's Ear in 1939. Smith and Chapple continued to correct the original planning sin when they expanded their department store to the south side of Birch Street in the 1950's, and also faced the street.

Following construction of Cottage Row, the CPR erected a number of standard duplex houses on Monk Street and Pine Street. A second group of duplex houses were built on Monk Street in 1913 that were similar to the originals with the exception of the addition of a front porch.



South side of Birch Street and Pig's Ear. Behind Pig's Ear (V. Crichton Sr. collection)



Standard CPR duplex house. (Rob Collings collection)

These homes were built in the same resourceful manner as other CPR buildings of the era and, although providing adequate living space, were found to be drafty and uncomfortable by most of the occupants. Similar houses of this type were built and still exist in Schreiber and White River.

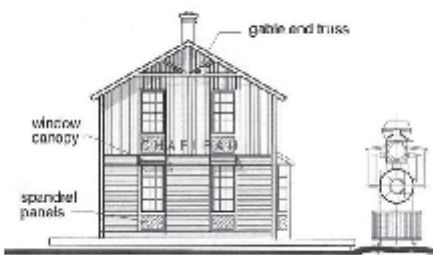
Lorne Street in 1908 a few hundred feet from the last bungalow on Cottage Row. The "Y" was a three-storey timber framed building with the distinctive CPR gable end over the main entrance verandah.

The architectural expression of a building is often associated with its social role in the community. This is certainly the case with the Chapleau Y. The social role is described **Cont'd on P.8**

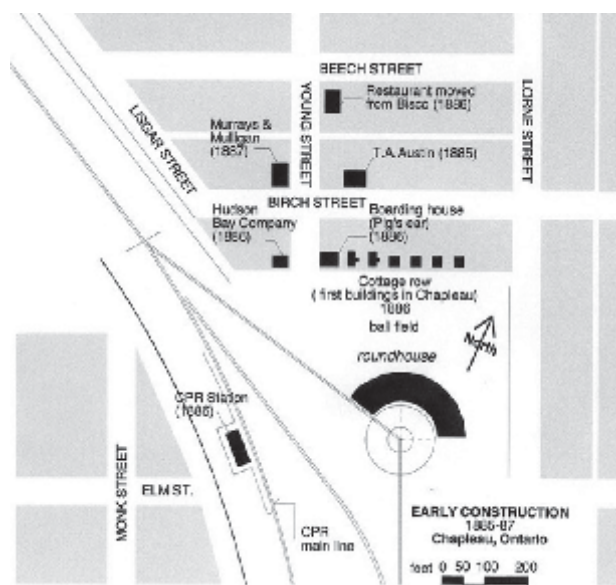
The last of the first generation of CPR buildings and their distinctive features was the Chapleau Railroad Y built on



Chapleau Railroad YMCA



Drawing of east wall of CPR depot



Plan of early Chapleau buildings location 1881-87



Cottage Row. First buildings in Chapleau 1886 (CP Corporate Archives)

Ontario
Licenced
Motor Vehicle
Inspection Station

Chapleau Cree Auto/Truck

Monday - Friday
8:30 a.m - 4:30 p.m.

"Preventive Maintenance keeps you on the road"

FOX LAKE RESERVE

CALL
864-9090
for an
appointment

The Straight Goods On First Nation Salaries

On November 22, 2010, the Canadian Taxpayers Federation (CTF) published salary figures for First Nation Chiefs and Councillors from across Canada. This release by the CTF was timed to coincide with the introduction of MP Kelly Block's Bill C-575 – the First Nations Financial Transparency Act – and alleged “new jaw-dropping reserve pay numbers” that, once again, misrepresented the First Nations reality. Since this time, numerous further stories have emerged on the CTF's website and in the media to suggest “solutions.”

As the national organization representing First Nation citizens in Canada, the Assembly of First Nations (AFN) has always supported the principle of fiscal accountability – but not in the manner set out by the CTF.

By focusing on the exceptions, rather than the predominant reality, and by locating the solutions within the Indian Act, rather than in a process that would see First Nations assume control over their own affairs, the CTF's approach is doing more to harm First Nations than it is to address the archaic federal structures that purport to “do what is best for the Indians.”

Obviously,

where there are fiscal improprieties, these should be addressed. But a scattergun approach that relies upon stereotypes and then advances salary figures based on the CTF's own fictitious calculations leaves little room for informed discussion or the advancement of meaningful solutions. The CTF's alarmist focus sets aside years of advocacy carried out by the AFN on behalf of First Nations across Canada that calls for the implementation of better accountability mechanisms, but without the unnecessary and inaccurate implication that First Nation leaders are corrupt.

The germination of AFN's efforts in this regard are captured in the 2004 publication of “Federal Government Funding to First Nations: the Facts, the Myths, and the Way Forward” which is available at www.afn.ca. This work, which focused on federal transfers to First Nations, was followed by the advancement of a broad strategy aimed at establishing a better basis for accountability, entitled “Accountability for Results.” It involved calling for:

- capacity building, aimed at an effective First Nations public service;

- institution building, aimed at providing First Nations with the facilities to govern; and,
- results-based management, based on five principles for accountability set out by the Auditor General of Canada.

This initiative, which was the subject of active policy engagement by the AFN for over two years, was ended by the federal government in 2007.

While First Nations are themselves aware of the challenges that exist within their communities regarding transparency and accountability, some would like to situate the blame squarely with First Nations themselves. Others, like the Auditor General of Canada, have pointed out that First Nation bands are already under a tremendous federal reporting burden – with an estimated 168 reports that are required from each and every First Nation annually.¹ Given this, a more meaningful context for a story about the salaries of First Nation elected officials is one grounded in reciprocal accountability and self-determination, rather than a smear campaign that sacrifices analysis for big headlines.

The real solutions to the misleading and divisive

arguments being advanced by the CTF (and MP Kelly Block) must be found in moving beyond the archaic structures of the Indian Act, not further entrenching them within it.

The Canadian Taxpayers Federation's Argument

The CTF issued its web publication aimed at the salaries of First Nation elected leaders in a manner that was intended to create alarm. Complete with misappropriated images of traditional First Nation figures, the CTF advances an argument that draws on a rampant stereotype that they themselves have helped to promulgate: the myth that First Nations are not accountable.

To enter into a debate about whether First Nations are or are not accountable – at this point – will do little to undo the sense of alarm that the CTF has helped to generate. Most Canadians have only a limited understanding of the situations, histories or aspirations of First Nations in Canada; sadly, it is the alarmist stories such as these that have the tendency to stick in peoples' imaginations.

While any abuse or misspending is wrong, with 3,297 First Nation elected officials in Canada, it must be pointed out that this is absolutely not the norm as the CTF would suggest. The vast majority of First Nation elected officials are simply trying to earn a decent standard of living – just like most Canadians – and working very hard in the process. Rather than acknowledge this, the CTF issued its release relying upon the following opening statement: “The numbers confirm what we've been saying all along... Many reserve

politicians are paying themselves exorbitant salaries while keeping their band members and taxpayers in the dark.”

And what is an “exorbitant” salary? According to the Government of Canada, the average salary of working Canadians is \$46,345.2. Comparatively, First Nation elected officials earn an average salary of \$36,845.3 – a discrepancy of almost \$10,000.

Certainly, by focusing on the exceptions, the CTF is intentionally working to create a negative impression about First Nation salaries. Similarly, grand comparisons with the salaries of Premiers and the Prime Minister help to further distort the reality.

In examining the CTF's figures, several significant questions emerge about assertions made by the CTF. Let's look at some of the “facts.” For example:

The CTF proclaimed that “approximately 50 reserve politicians paid more than prime minister in 2008-09.” Based on this claim, AFN gathered the most up to date information on Parliamentary

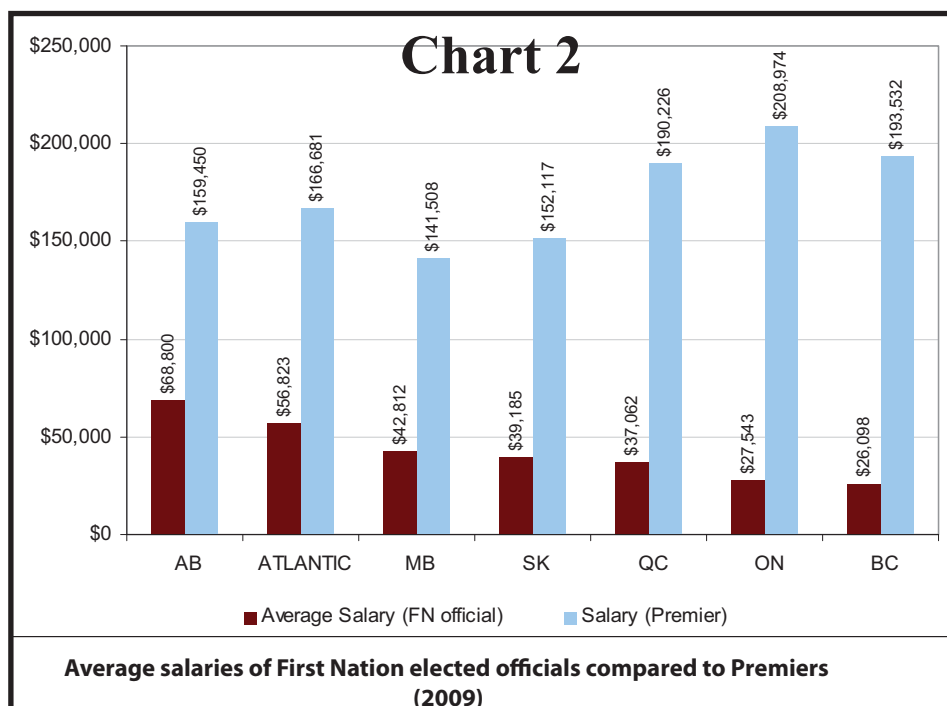
salaries to confirm that the Prime Minister's gross salary is \$315,462. However, the CTF included the calculation of “other” remuneration and “travel / per diems” in First Nation salaries. According to INAC's Financial Reporting Guidelines, “other” remuneration relates to all other sources of revenue – not just actual salaries.

Did former Premier Danny Williams' fortune get calculated into his salary as Premier?

Did revenue from Canada Steamship Lines get calculated into former Prime Minister Paul Martin's salary? Of course not, and it's not appropriate to do so with First Nation elected officials either. This is not methodologically correct – if we're going to make comparisons, let's compare apples with apples.

Similarly, “travel / per diems” relate to expenses that are incurred while on business that can be reimbursed. These are not included in the calculation of anyone else's salaries; we are not sure why the CTF would include them here. Based on a more accurate analysis, the single highest annual

Cont'd on P.6



**ROCH'S
AUTO REPAIR**

24 hour Emergency Towing
serving Chapleau since 1996 with
automotive needs: Tires, sales,
installation and repair.

Roch would like to take this
opportunity to welcome Class A
mechanic
Albert Lapierre
to his team. Call and book an
appointment today for
all your automotive
needs.



705-864-1477
705-919-6915 (cell)

Probe Mines présente son premier exposé public



David Palmer explique le procédé de forage lors de l'exposé public.

Bon nombre de personnes ont assisté lundi dernier au tout premier exposé de Probe Mines à la salle communautaire, en vue d'informer le public sur le progrès entourant la mine d'or du lac Borden.

Le directeur-général de Probe, M. David Palmer, était sur place pour faire part des études économiques qui sont en cours et qui se pour-

suivront jusqu'aux prochains 2-3 ans. "Nous étions de l'avis que le temps était propice pour consulter les collectivités aussitôt que les résultats de nos analyses confirmaient le potentiel d'une mine viable au site du lac Borden" a affirmé M. Palmer

Le gisement d'or, qui a été confirmé en 2010, s'inscrit dans un ensemble de plus de

2100 concessions minières dans la région. Le territoire d'exploration est situé à 15 kms de Chapleau et à 1 km de l'autoroute 101. Plus de 110,000 mètres de forage ont été effectués et l'on estime que la concentration d'or s'élève à 4 millions d'onces.

Au cours de l'exposé on offrit également une vue d'ensemble de l'exploitation d'une mine d'or, y compris les impacts environnementaux et socio-économiques qui en découleraient et comment les gérer. "L'exploitation minière a beaucoup progressé depuis les derniers 30 ans" déclara Palmer. "C'est une industrie qui est rigoureusement réglementée" ajouta-t-il. À titre d'exemple, il souligna que Probe était tenu de déposer une caution avec le Ministère du Développement du Nord et des mines pour couvrir au-delà de 100% du coût de

restauration du site d'exploitation avant même d'être en mesure d'obtenir un permis. Le projet est à sa première étape économique, ou le deuxième de huit volets.

Voici les autres étapes:
 3. pré-faisabilité 6-12 mois
 4. faisabilité 12 mois
 5. impact environnemental et social
 6. construction 18 mois
 7. exploitation – estimée à entre 15 et 20 ans
 8. fermeture et réaménagement

Évidemment il va falloir franchir plusieurs étapes avant d'arriver au point d'exploitation, mais chose certaine, l'avenir de notre collectivité semble plus prometteur.

Advenant l'ouverture de la mine, on estime qu'il faudra embaucher 1100 travailleurs pendant sa phase de construction. Le nombre d'employés requis pour l'exploiter pourrait aller de 150 à 250.

Bien sûr, les travaux inquiètent les propriétaires des chalets environnants. Ces préoccupations ont été soulevées pendant la période de questions et, dans certains cas, apaisées.

M. Palmer a également parlé d'une fuite récente d'un boyau de perforuse de glace: "Le boyau ne contenait aucune substance dangereuse, seulement de l'eau et de la poussière qui ont été aspirés pendant notre exercice de forage sur la glace" affirma-t-il. "Aussitôt qu'on s'est rendu compte du déversement, on s'est précipité pour tout nettoyer et s'assurer que des agents environnementaux des Premières Nations étaient sur place et que le Ministère de l'Environnement était satisfait de nos résultats."

Ensuite M. Palmer accepta volontiers les questions de la salle en affirmant que la participation de la communauté est une partie importante du processus. Les consultations publiques se dérouleront tout au long du projet.

L'environnement et sa préservation sont une priorité pour Probe Mines et à cet effet, les modes opératoires de la compagnie sont conformes aux exigences du Ministère de l'Environnement.

Le président de la Probe Mines donna le mot de la fin en déclarant que la compagnie voulait que

cette initiative soit d'abord un projet local et que les collectivités soient des partenaires clé dans son développement. Comme preuve de son engagement, Probe vient de collaborer avec la Chapleau Economic Development Corporation en vue d'examiner les bénéfices et les retombées économiques du projet. Affirma le Maire Byham: "Cette mine ne deviendra pas réalité avant quelques années, donc même si nous n'avons pas de résultat concret, il faut tout de même prendre les devants pour s'assurer d'être fin prêts à assumer une initiative de cette envergure et d'en tirer le plus de bénéfices possibles pour Chapleau."

Il faut donc mettre en jeu un esprit d'équipe entre notre collectivité et Probe Mines pour que les questions ou les obstacles qui pourraient surgir soient redressés en temps opportun. Une bonne planification infrastructurelle de la part du Canton de Chapleau pourrait s'avérer essentielle d'ici peu.

Nous avons un long parcours à suivre, mais il est encourageant et rempli d'espoir. Chose certaine, la collectivité de Chapleau saura le faire et prètera main forte à Probe Mines afin de foncer ensemble de l'avant, assurant donc un avenir à notre communauté et à nos enfants et petits-enfants.



What's New in the Month of April

Monthly draws for a free day of care for scheduled users

We'll cover the enrollment fee for the first 10 children to register from April to December 2013

24 hour cancellation policy for drop in users

1-2-3 hour casual use blocks with special rates when "YOU" need it for appointments, errands, etc.

Flexible extended hours and so much more.....

For more information please call
The Chapleau Child Care Centre
 at 705-864-1886
 or stop by the Centre at 28 Golf Road

Industry Screening in Parry Sound for Local Movie

Saturday, April 6th, The Road to Tophet will be privately screened for the cast and crew of Pete's Christmas.

Starring Bruce Dern, Zachary Gordon and Molly Parker and currently shooting in Parry Sound, this production is part of the explosion of filming currently underway in northern Ontario. Road to Tophet producer, Axel Green, is working on Pete's Christmas and arranged the screening as a chance to generate buzz for the Chapleau shot movie and to get feedback from other industry professionals. "We'll also raise a bit of money to complete the film with this screening," says Green. Also

attending the screening will be Sault Ste. Marie based actor, Matt Connors.

Since appearing as the drug kingpin, Rick, in The Road to Tophet, Matt's rapidly rising star has caught the attention of film producers working in the north.

This week also marks the end of The Road to Tophet's internet fundraising campaign. As a show of solidarity, many cast members have joined "The 300" - a special limited time offer of a digital download of the movie for \$10. Big thanks to all our many supporters! To contribute you must act by April 11. Visit indiegogo.com/theroadtotophet.



"THE BEEF WAY" IS COMING TO CHAPLEAU
Order your Beef, Pork and Chicken.
 Delivery date will be May 14th, 2013. Please have orders in before April 29th. Call for more information, or to request your pre-order catalogue.
1-800-662-1446

The Straight Goods On First Nation Salaries

Cont'd from P.4
 salary of any First Nation elected official as found in the data provided by the CTF from INAC (inclusive of any honouraria) is \$247,000.

The bottom line: AFN's recalculation of the original figures provided to the CTF by INAC confirms that no First Nation elected official in Canada earns more than the Prime Minister.

The CTF first claimed that "approximately 222 reserve politicians paid more than their respective premiers in 2008-09." This figure was later revised by the CTF to 160.

However, according to our recalculation of the original figures provided to the CTF by INAC using actual salary dollars and honouraria, the AFN identifies that only 21 (rather than 160) First Nation elected officials earn more than their

respective Premiers as follows:

Prov. FN	Elected Officials	Paid more than P.M.
BC	960	0
AB	315	15
SK	521	1
MB	348	0
ON	764	0
QC	179	0
ATLANTIC	210	5

This represents an extremely small fraction of First Nation elected officials in Canada (less than 1%; actually 0.6%) and does not meaningfully inform a debate about salaries in a First Nations context.

In fact, the average salary for a First Nation elected official in Canada is \$36,845. Chart number 2 shows the average salaries by region, compared to the salaries earned by their respective Premiers in each province. This chart shows the real differences between salaries of First Nation elected officials and that of the Premiers of Canada.

The Assembly Of First Nations Position: Real Solutions For Real Problems

First Nation governments are arguably among the most transparent and accountable governments in all of Canada. The AFN has long advanced its Accountability for Results initiative and continues to work with First Nation organizations and leaders – and with the Auditor General of Canada, the Treasury Board Secretariat, and Indian and Northern Affairs Canada – on better approaches to both governance and accountability.

We all know what the problems are – they are not exorbitant salaries – they are decades of paternalism that have placed many First Nation leaders in a position where they are responsible for implementing decisions, but where the ultimate power to make decisions rests with the federal government (i.e., under the Indian Act). Not only does this continue to be patently inappropriate, it remains a recipe for poor outcomes.

In July 2010, at AFN's Annual General Assembly in Winnipeg, National Chief Shawn Ainchut Atleo issued a challenge that would see First Nations move beyond the Indian Act over the next two-to-five years. This challenge speaks to the problems that many First Nations find themselves in responding to allega-

tions like those made by the CTF. The poverty that characterizes many First Nations remains the object of mainstream pity and regret, but with very limited understanding. And when a First Nation citizen or community is seen to be too successful then, again, do they fall prey to intense scrutiny or contempt. Neither of these situations is acceptable, nor do they point us in the direction that so many First Nations want to go.

The solutions lie in returning to First Nations the powers that all nations require to be self-determining. The CTF is intent on smearing all First Nation leaders based on the alleged actions of a few. And in doing so, they are calling on Parliamentarians and Canadians to support MP Kelly Block's private member bill, C-575.

If the issue were one only of transparency then, perhaps, the bill would be fine. But, as we have described, the issue is

not so simple. Bill C-575 favours the further transfer of accountability away from First Nations, thereby only further entrenching the Indian Act and strengthening the Department of Indian Affairs' role in this regard. This is not a solution, it is a shortsighted reaction to alarmist headlines – in fact, it takes us backwards.

The AFN needs the support of all Canadians to ensure that the Government of Canada works with First Nation governments in moving forward to create fundamentally new fiscal transfer arrangements and accountability measures. We are well beyond tinkering – what is required is transformative change. We all must do better.

Pimii Kamik Gas Bar & Gift Shop



Located on the Chapleau Cree First Nation

WINTER HOURS

will be from 7 a.m. - 9 p.m., 7 days a week

Drop by and check out our line of Authentic Native Crafts, Unique Gift Ideas, Jewellery, and Gift Certificates TOO!

We also carry road trip snacks, which includes Subs, Chips, Pop, plus a whole lot more.

Your Propane Refilling Station




GET INVOLVED VISIT THE "Chapleau Community Engagement Group" ON FACEBOOK AND GIVE US YOUR OPINIONS.



SERVICES DE SANTÉ DE CHAPLEAU HEALTH SERVICES

ANNUAL MEMBERSHIP FEES COTISATION ANNUELLE



Pursuant to the Corporation's By-laws, in order to vote at the Annual General Meeting of Services de santé de Chapleau Health Services, persons must have their corporate membership fee of \$2.00 paid on or before April 12, 2013.

Memberships are available at the Chapleau General Hospital or from Directors of the Board of Directors of Services de santé de Chapleau Health Services.

En revue des règlements de la corporation, les membres de la corporation doivent avoir payé leur cotisation annuelle de 2\$ avant le 12 avril 2013 pour avoir le droit de voter à l'assemblée générale annuelle.

On peut obtenir une carte de membre à l'hôpital Général de Chapleau ou auprès d'un directeur(trice) du conseil d'administration des Services de santé de Chapleau Health Services.

PUBLIC NOTICE
PROPOSED GOGO CONNECTIVITY TELECOMMUNICATIONS TOWER
60M STEEL LATTICE TELECOMMUNICATION FACILITY

SUBJECT:
 A wireless communications self-supporting tower, 60 metres high and will occupy a ground compound area of 18.0m x 18.0m

Location: Highway 101/129 Chapleau, ON

Geographic Coordinates:
 Lat: 47 45 00.14
 Long: -83 23 07.59

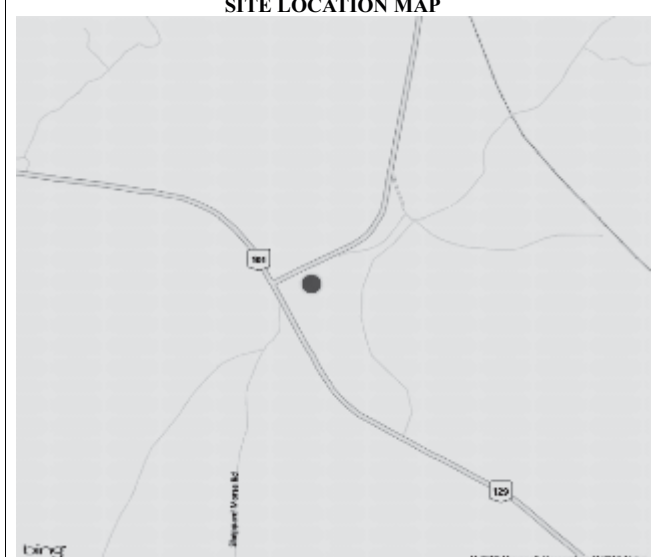
ANY PERSON may make a written submission to the individual listed below by close of business **May 6, 2013** with respect to this matter.

PLEASE TAKE NOTICE as the approval of this site and its design is under the exclusive jurisdiction of the Government of Canada through Industry Canada, the local land-use authority has no jurisdiction in this matter other than as a commenting body to Industry Canada and the applicant. For more information regarding the approval process please contact the local Industry Canada office at 705-941-4607 or the proponent contact below.

PLEASE FORWARD ALL WRITTEN COMMENTS AND REQUESTS FOR ADDITIONAL INFORMATION TO THE FOLLOWING INDIVIDUAL:

PROONENT CONTACT: Sean Ogilvie, Summit Telecom Services Inc., 2645 Royal Windsor Drive, Mississauga, Ontario, L5J 1K9, Tel: 905-630-7912 sean@summit-tel.com

SITE LOCATION MAP



The facility will include a radio equipment shelter and fencing surrounding the tower base. The structure will provide air-to-ground wireless and data services for commercial aircraft.

THE LOCAL MARKET PLACE

CHADWIC HOME, FAMILY RESOURCE CENTRE. Offers shelter, emotional support, and information for women and their children who are in crisis situations. We have a Toll Free Crisis Line which is staffed 24 hours a day. We can arrange for free transportation to the Centre for women who live in the Algoma/Chapleau area. We also offer support to women who live in the communities of Chapleau, White River, Dubreuilville, and Hornepayne through our Outreach Program. Our Outreach Worker travels to those communities to meet with women who need emotional support as well as information about their rights and options. If you need to speak with the Outreach Worker when she is in your community, you can call the Centre at any time to set up an appointment. You do not need to be a resident of the Centre in order to use our services. If you need someone to talk to or if you just need someone to listen, call our Toll Free Crisis line at 1-800-461-2242 or you can drop in at the Centre. We are here for you.

ALCOHOLICS ANONYMOUS
Offers help to anyone who desires to stop drinking. Open discussion meeting on Sundays at 2:00 p.m. Trinity United Church basement. Telephone contacts: 864-2786

ALCOHOLICS ANONYMOUS
Offers help to anyone who has the desire to stop using drugs/alcohol. Open discussion meeting on Saturday at 7:00 p.m. Pentecostal Church. Call 705-860-9769 for support.

Alcoholics Anonymous (A.A.) Open discussion meeting every Monday evening. Brunswick House First Nation Band office lounge 7pm. Narcotics Anonymous (N.A.) every Tuesday same place same time. NNADAP Worker @ 864-0174 info.

Societe Alzheimer Society meetings will be held at the Chapleau Hospital every 1st Monday of each month starting from 7:00 p.m. to 9:00 p.m.

Adult Mental Health (18 yrs and up) and Addiction Services (all ages) offered at Turning Point. Located at 8 Lorne St. South. For professional, confidential services, please call 705-864-1919. Open Monday to Friday from 8:30am to noon and 1pm to 4:30pm.
Services de santé mentale pour adultes (18 ans et plus) et les services de toxicomanie (tous les âges) offerts à Point décisif. Situé au 8, rue Lorne Sud. Contactez-nous au 705-864-1919 pour des services professionnels et confidentiels. Les heures ouvrables sont de 8 h 30 à midi et de 13 h à 16 h 30.

FOR SALE

1998 Chevrolet Suburban 4x4, 6.5 l. Diesel 1500 with 2500 undercarriage. AM/FM CD Recent front diff & transfer case overhaul, new front shocks and wheel bearings, new fuel lines, rim mounted winter tires. Newer fuel tank (4yrs) Needs Engine. 276,000 kms. \$1700.00 obo. As is. Call 705-864-0889.

2010 Dodge Grand Caravan SE rear entry converted passenger wheelchair van. Asking \$27,500.00 firm certified+4 mounted winter tires (studs). Worth over \$55,000.00 new. Call 705-864-0889 ask for Mario or leave a message.

WANTED

To purchase winterized cottage or home with power for year round living near water within 30 km of Chapleau. Call 705-864-1870 and leave message.

GET INVOLVED VISIT THE "Chapleau Community Engagement Group" ON FACEBOOK AND GIVE US YOUR OPINIONS.

Transform Your Photos Into One Of A Kind Gifts



Mouse Pads

Jig Saw Puzzles

864-1870

Dr. L. R. Simpson VETERINARIAN

Will be at the Trinity United Church
MONDAY, April 15th, 2013
FOR APPOINTMENTS CALL
Nadene McEachren at 864-1055
lrs.vet@gmail.com



Bruneau's INSTANT CASH REFUND REMBOURSEMENT INSTANTANÉ

- INSTANT CASH REFUND
- ELECTRONIC FILING
- FAMILY AND SENIOR DISCOUNTS
- PICKUP AND DELIVERY FOR SENIORS
- YEAR ROUND SERVICE

- REMBOURSEMENT INSTANTANÉ
- RAPPORT D'IMPÔT ÉLECTRONIQUE
- RABAIS FAMILIAL ET LIVRAISON POUR PERSONNES ÂGÉES
- SERVICE À L'ANNÉE

Tax Prep and E-File

JOHN BRUNEAU
101 LANSDOWNE ST. S.

705-864-0404

RELIABLE - PROFESSIONAL - CONFIDENTIAL



Cell: 705.542.0313
Bus: 705.942.2100 Fax: 705.942.9892
Lianne.vipond@century21.ca
www.century21.ca/lianne.vipond



121 Brock Street
Sault Ste. Marie, ON
P6A 3B6

Choice Realty Inc. Brokerage*
*Independently Owned and Operated. Trademarks owned by Century 21 Real Estate LLC used under license or authorized sub-license. © 2012 Century 21 Canada Limited Partnership.

Lianne Vipond SALES REPRESENTATIVE

Peak Roofing

Shingle installation and repairs
Soffit & Fascia, ventilation

705-864-2602

peakroofing@mail.com

BODYLINES BY CRACK LTD.



5 Licensed Bodymen
Insurance Claims
Windshield Repairs
and Replacement
State of the Art Frame

ALL WORK GUARANTEED
PLEASE CALL 705-856-1406

BERRY'S FREIGHT SERVICES

TIMMINS - CHAPLEAU - TIMMINS
MONDAY TO FRIDAY
1lb. to 10,000 lbs.

FOR QUALITY SERVICES AT INEXPENSIVE PRICES
GIVE US A CALL AT
1-705-264-4334

SLOMA CLEANERS

Drop off at **Between Friends (Cedar Grove)**
Mon to. Fri. 8 am-noon and 1-4 pm

ALL ADS ARE ACCEPTED AT DENISE'S FLOWER SHOP
DEADLINE FOR RECEIVING ADS IS WEDNESDAY 4:00 p.m.

CLASSIFIED ADVERTISING RATES

Regular Classified Ads
First 25 words or less \$6.25
Each additional word \$0.16+GST
No refunds on cancelled classified ads.

NEW AT THE CHAPLEAU PUBLIC LIBRARY

Nous avons maintenant les livres
PRIX DES LECTEURS RADIO-CANADA 2013
Filleul - Hélène Koscielniak
Le plancher se dérobe - Guy Arnel Bayegnak
Un jour, ils entendront mes silences - Marie- Josée Martin
L'Historien de rien - Daniel Poliquin
Une mort honorable - Jacques Savoie
Quelque chose comme une odeur de printemps - Annie-Claude Thériault
DID YOU KNOW?
You can download FREE E-books and Audio Books from home.
Go to <http://downloadcentre.library.on.ca>

Alain Bouffard
Sales Representative
61 Mission Road
Wawa, Ontario, P0S 1K0
Tel: 705-856-2394
Fax: 705-856-4290
alainbouffard@missionmotors.com



NEW & PRE OWNED VEHICLE SALES
Goodwinch SERVICE CENTER
24hr TOWING



ALLEMANO & FITZGERALD Barristers and Solicitors

MICHAEL C. ALLEMANO, B.A., L.L.B.
Certified by the Law Society as a Specialist in Real Estate Law
P.O. Box 10, 369 Queen St. E. Suite 103, Sault Ste. Marie, Ontario P6A 1Z4
Phone (705) 942-0142 Fax (705) 942-7188
P.O. Box 1700, 37 Broadway Avenue, Wawa, Ontario P0S 1K0
Phone (705) 856-4970 Fax (705) 856-2713

Northern Lights Ford Sales

Andrew G. McKenzie
Travis Gendron



Highway 17 North
P.O. Box 1033
Wawa, ON. P0S 1K0
Business 705-856-2775
Fax 705-856-4862

tgendron@northernlightsford.ca
sales@northernlightsford.ca



LABERGE VENNE & PARTNERS
PROFESSIONAL CORPORATION
CHARTERED ACCOUNTANTS and CONSULTANTS
COMPTABLES AGRÉÉS et CONSULTANTS

Professional Services to Northern Ontario for 30 years

Financial Statements for Small Business & Corporations
Tax Returns - Personal, Corporate and Trust/Estate
Personal, Retirement, Estate Financial and Tax Planning Strategies
Business Projections, Plans and Financial Proposals
Computer Consulting
ACCPAC and Quickbooks

1970 Paris Street, Sudbury, Ontario P3E 3C8
(705) 523.0272 (800) 581.7510 www.lvpartners.ca



LABERGE VENNE & PARTNERS
PROFESSIONAL CORPORATION
CHARTERED ACCOUNTANTS and CONSULTANTS
COMPTABLES AGRÉÉS et CONSULTANTS

30 ans de service professionnels pour les entreprises du Nord de l'Ontario

États financiers pour petites et moyennes entreprises et corporations
Rapports d'impôts personnel, de compagnie et de fiducie
Planification financière et fiscale personnelle et de compagnie
Projections financières, plans d'affaires et propositions de financement
Consultation en informatique
ACCPAC et Quickbooks

1970 rue Paris, Sudbury, Ontario P3E 3C8
(705) 523.0272 (800) 581.7510 www.lvpartners.ca

Chapleau Moments

Cont'd from P.3
 best in the CPR Bulletin of April 1924 as follows:

“ The value of the organization cannot be fully appreciated by other than those who know its workings. The engineers and trainmen, after driving through the snow and cold, find an open fire, a good

meal and cheerful companionship awaiting them at the end of a journey. They can enjoy practically all the comforts of a home and the satisfaction which this gives them, and the general effect it has on the morale and well-being of the employees generally amply compensates the

Company for its rather heavy expenditures.” It is therefore not an accident that the Railroad “Y” has many of the characteristics associated with the traditional idea of home. This begins with a carefully manicured front lawn and fence, rambling front porch, a traditional pitched roof, dramatic chalet style roof overhangs and the ever-present distinctive CPR gable ends. These features had mostly disappeared in the latter years of the Chapleau Y but can be seen in many of the early photographs and post cards.

The enduring lesson taken away from the first generation of CPR buildings is that the CPR in those early days had no alternative but to seek solutions that were innovative, cost-effective and functional to get a near-impossible job done. There was no alternative but to yield to the demands of uncompromising climatic and geographical conditions and make maxi-

mum use of local materials and common labour skills. This produced a different kind of architecture that was the polar opposite of the fussy

and self-indulgent Victorian architecture of the day. This honesty and lack of pretentiousness, however, made it distinctive, important,

uniquely Canadian and in some respects ahead of its time. This was then the early look of the classic railway town that Chapleau was to become.



LEISURE AND CULTURE SERVICES COMMITTEE

CANADA DAY CELEBRATIONS MEETING

Individuals or organizations interested in participating in or volunteering for this year's event are encouraged to attend.

TUESDAY APRIL 16th, 2013 AT 7:00 PM IN THE COUNCIL CHAMBERS AT THE CIVIC CENTRE

COMITÉ DES LOISIRS ET DES AFFAIRES CULTURELLES


Rencontre pour la célébration de la fête du Canada

Les individus ou les organisations intéressés à participer ou aider en tant que volontaire pour la célébration de cette année sont encouragés d'assister à la rencontre.

LE MARDI 16 AVRIL 2013 À 19H DANS LA SALLE DE RÉUNION DU CONSEIL MUNICIPAL AU CENTRE CIVIQUE

PUBLIC NOTICE

**PROPOSED GOGO CONNECTIVITY TELECOMMUNICATIONS TOWER
60M STEEL LATTICE TELECOMMUNICATION FACILITY**

<p>SUBJECT:</p> <p>A wireless communications self-supporting tower, 60 metres high and will occupy a ground compound area of 18.0m x 18.0m</p> <p>Location: 25 Parliament Boulevard, Chapleau, ON</p> <p>Geographic Coordinates:</p> <p>Lat: 47 49 12.50 Long: -83 23 35.96</p> <p>The facility will include a radio equipment shelter and fencing surrounding the tower base. The structure will provide air-to-ground wireless and data services for commercial aircraft.</p>	<p>ANY PERSON may make a written submission to the individual listed below by close of business May 6, 2013 with respect to this matter.</p> <p>PLEASE TAKE NOTICE as the approval of this site and its design is under the exclusive jurisdiction of the Government of Canada through Industry Canada, the local land-use authority has no jurisdiction in this matter other than as a commenting body to Industry Canada and the applicant. For more information regarding the approval process please contact the local Industry Canada office at 705-941-4607 or the proponent contact below.</p> <p>PLEASE FORWARD ALL WRITTEN COMMENTS AND REQUESTS FOR ADDITIONAL INFORMATION TO THE FOLLOWING INDIVIDUAL:</p> <p>PROPONENT CONTACT: Sean Ogilvie, Summit Telecom Services Inc., 2645 Royal Windsor Drive, Mississauga, Ontario, L5J 1K9, Tel: 905-630-7912 sean@summit-tel.com</p> <div style="text-align: center;">  <p>SITE LOCATION MAP</p> </div>
--	---



J'APPREND ENCORE.

Semaine des adultes apprenants du 6 au 14 avril 2013



Il n'est jamais trop tard pour apprendre.
Venez voir les cours et les services offerts à FormationPLUS.
Appelez-nous au 705.864.2763 ou visitez-nous au 69, rue Birch ou sur Facebook (Formation Plus).



Centre culturel Louis-Hémon présente

Les trois exils de Christian E

le mercredi 10 avril à 19h30

École secondaire Trillium

Adulte - 28,50\$
Étudiant - 10\$

23\$ (membre)
5\$ (j'VAIS)



Great Business Opportunity

Owners want to retire

A well established corner store business as well as the Starlite Building.

Please see Diane at the corner store for more details