

Talk about good coffee!

Miss Muggins Coffee and Fresh Donuts



# CHAPLEAU EXPRESS

**PIZZA HUT & KFC**  
 There's a Reason We're Number 1  
 "0 TRANS FAT"  
 864-0911



Vol. 12, Issue 32, April 19, 2008

# Co-operation is key to new initiatives' success



**The Mayors group: Angelo Bazzoni (White River), John MacEachern (Manitouwadge), Hélène Perth (Dubreuilville), Earle Freeborn (Chapleau), Gene Belanger (Hornepayne) and Howard Whent (Wawa)**

**By Clara Lauzière**  
 The Northeast Superior Forest Community is a new initiative that although some may have heard of, has not

been described in any great detail. There are questions in the community, in fact in all the regional partner communities, surrounding who we are and what we are doing.

April 2nd saw us celebrate our accomplishments with the launch and official announcement of more than \$1 million of funding that will be used over the next several years, but what exactly does this project mean?

As General Manager for the new corporation, I can tell you that the overall goal of this initiative is to take a new look at our forestry sector. This region, from Hornepayne, to Manitouwadge, White River, Dubreuilville, Wawa and Chapleau, has been hit by some extremely difficult times. As mills close throughout the region, despite the best efforts of management and staff, it has shifted our

economies in ways that are difficult to recover from. The recovery process itself will take years, and our communities will not look the same as they did before. None of these facts diminishes the most important thing in the NSFC project our greatest asset is still the forests within which we all live, work and play.

This corporation is looking at new ways to generate wealth and prosperity through taking a different approach to resources. There are opportunities to develop new industries in up and coming sectors, from Bio-Energy to Carbon creation our job is to think outside of the box and make these opportunities happen. If we sit back and do nothing, then nothing will be the result. NSFC is not willing to allow the decline to continue without a fight!

One of the key priorities for the Northeast Superior Forest Community is to build strong relationships with the First Nation Com-

munities within our project boundaries.

The Mayors of all six communities recognize that decisions involving lands and resources cannot be made without the direct involvement of area First Nations. Now that process funding has been secured, the NSFC is committed to advancing an aggressive relationship building initiative with the seven First Nations located within the geography of the Forest Community initiative. Chief Keeter Corston of Chapleau Cree First Nation stated that he believes that benefits could be derived from First Nation-municipal partnerships, adding that this can only occur when "Constitutionally entrenched First Nations rights to the resources are fully recognized".

Our relationship building exercise will continue over the coming months, with the expected outcome of creating new partnerships with our First Nations.

The corporation itself is structured in

such a manner as to look at projects in various different streams or verticals.

Non-Timber Forest Products or NTFP's, BioEnergy & Wood and Strategic Policy are the three main areas of study at this time. This is expected to expand over time, but for now they are a key focus area. These will include many projects, from Blueberry plantations to wood plastics or even to cultivating plants for pharmaceutical uses.

Until we understand exactly what it is that is available in the Northeast Superior Region, we will not fully grasp the opportunities that are available to us. Our organization is a new one.

Although these communities have partnered for many years, we have not come together in such a big way until now.

As a region we are working as a cohesive group and are confident that these projects will provide us new economic opportunities.

**Long Term Forecast**

**Saturday**  
 High 7  
 Low 1


**Sunday**  
 High 11  
 Low 4

**Monday**  
 High 15  
 Low 7

**Tuesday**  
 High 16  
 Low 6

**Wednesday**  
 High 10  
 Low 5

**Thursday**  
 High 8  
 Low -1



Serving Northern Ontario with Distinction since 1996

**NHC Northern Haul Contracting**

New! Automotive Mechanic Services!  
 Also, Welding Services, and much more!

Office: (705) 864-1095  
 Fax: (705) 864-1110

come in with a problem, come out with a smile :)

Visit our website at [www.northernhaul.com](http://www.northernhaul.com) for a list of our services!

# REPORT FROM Queen's Park BY Mike Brown,

Provincial Member of Parliament for Algoma-Manitoulin



## Public infrastructure is vital to every person in Ontario

The Ministry of Public Infra-structure Renewal (PIR) works with partners inside and outside government to modernize public infrastructure, plan for growth, and care for the environment in ways that enhance our

quality of life and contribute to our economic success.

PIR also manages the government's capital assets. The Ontario government works with its partners such as hospitals, school boards, municipalities and transit systems to manage and maintain our existing infrastructure and to build the infrastructure needed to meet the demands of Ontario's growing population. In total, Ontario's large and complex infrastructure system is valued at more than \$266 billion.

It includes:

- Schools where our children learn
- Colleges and universities that equip

young people with the skills and knowledge needed in a competitive world economy

- Hospitals and the state-of-the-art diagnostic and treatment equipment

- Transit that gets us to and from our destinations and the transportation networks that move goods to market

- Water and wastewater systems that deliver safe, clean water to communities across Ontario

- Recreational facilities and cultural venues that enrich our lives and attract visitors to our communities

After years of underinvestment, much of Ontario's infrastructure has deteriorated and is outdated.

- The provincial population is expected to increase by about 4 million over the next 25 years and the proportion of senior citizens over 65 years of age is forecast to

grow from 13 per cent to more than 22 per cent in that same period

- Ontario's hospitals, on average are more than 40 years old

- Provincial highways are in need of repair and expansion to accommodate growth and stimulate economic activity

- Many water pipes in cities like Toronto and Ottawa were installed in the 1800s

- And many of Ontario's schools were built in the 1920s

- Some jails were built in the 1800s and some of our courthouses are more than 75 years old

The Ontario government is correcting these deficiencies to ensure the province has a healthy, well-educated workforce; accessible, top-quality services; orderly, planned growth for our communities and a vibrant economy. For

**The Chapleau Express**  
 P.O. Box 457  
 Chapleau (Ont.) P0M 1K0  
 Telephone - Fax : 705-864-2579  
 e-mail : chaexpress@sympatico.ca  
**Published every Saturday/Sunday**  
**Deadline for receiving ads is Wednesday at 4 p.m.**  
 The Chapleau Express is delivered free of charge to every household each Saturday. If you have any comments, please feel free to contact us. Subscriptions: **\$70.00 per year (Canada) \$150.00 U.S per year (U.S.A)** Canadian Publications Products Sales Agreement #30183799

the first time, the Ontario government has a strategy to deal with these challenges. It includes four key elements:

Building a Better Tomorrow Framework puts in place principles to govern the planning, financing and procurement of public infrastructure and to protect the public interest. ReNew Ontario, a five-year \$30 billion plus infrastructure investment plan, directs infrastructure investments to the most important priorities for people: health care, education and

economic success.

Infrastructure financing and procurement strategies that leverage both public and private sector expertise and resources and give Ontarians the best value for their tax dollars. The Growth Plan for the Greater Golden Horseshoe ensures infrastructure investments match growth in the most populated area of the province.

For more information please call (416) 325-0424 or visit the Ministry website at <http://www.pir.gov.on.ca/english>



**BE WISE!**  
**ADVERTISE IN THE CHAPLEAU EXPRESS**  
 chaexpress@sympatico.ca

## IN MEMORY

### OVILA BRILLANT

Nov.17,1921-April 23,2007

Dear Father and Grand-Father, One year has passed since you left us to join your Higher Power. Your spirit lives on and always will. Times you laughed, gave advice or just listened echo in the memories of those whose lives you touched. And in being so remembered your legacy will live on. It comforts us to know that death cannot diminish the important ways you touched our lives, that grief cannot take away the good times that we shared, that sorrow will fade in time but memories remain forever.

Cher Papa et Grand-Papa, Un an déjà que vous nous avez quitté non sans déchirement, mais vous avez espéré dans le Seigneur. Votre départ à laissé une douleur profonde qui ne peut être effacée, mais l'amour que nous avons partagé avec vous sera toujours bien vivant dans nos coeurs. A l'approche du premier anniversaire de votre départ, nous nous souvenons affectueusement de votre amour pour nous. Malgré nos coeurs brisés, nous vous disons merci pour tous les merveilleux souvenirs. Aide nous à surmonter notre peine et veillé sur nous. Vous nous manquez énormément et nous vous aimons pour toujours.

*Les familles Brillant et Martin xoxo*

## OBITUARY

### PILOTE, MRS. ROLLANDE

Passed away at St. Michael's Hospital in Toronto, on Tuesday, April 8, 2008, at the age of 46 years. Rollande, beloved wife of Sylvain. Daughter of the late Emile and Aline Fortin. Loving mother of Johnny (Angela) and Angele (Adam Chevrier). Loving grandmother of Brandon, Lucas, Isayah, Aliyah and Isabelle. Dear Godmother of Edouard and Annabelle. Rollande will also be sadly missed by her six sisters and three brothers, her brothers and sisters-in-law, nieces, nephews, and friends. Cremation has taken place. A Memorial Service will take place at Sacred Heart Church, Chapleau, on Saturday, April 19, 2008, at 11:00 a.m. For those who wish donations to the Northern Cancer Research Foundation would be appreciated by the family. For more information please call the Gilmartin Funeral Home, Wawa (705) 856-7340.

## THANK YOU

We the families of the late Ina Coulter, would like to say THANK YOU!

To Tanya, Sylvia and Joanne of the activation department in the Bignucolo Residence, for your constant loving care and attention. We thank you!

To all the RPN's who gave mom the most wonderful Tender Loving Care. We thank you! And to all our friends and relatives who traveled, sent food, flowers, donations and cards. We thank you!

Mom is gone, but she will never be forgotten.

Thank You

Gary, Gail, Doug, Allen, Shelley and families

**Ads and advertisements can be dropped off at the Chapleau Innovation Centre Monday to Friday 9:00 a.m. to 4:00 p.m.**

## GOING TO CHURCH

Catholic Church  
**SACRED-HEART OF JESUS PARISH**  
**PAROISSE SACRÉ-COEUR DE JÉSUS**  
 26 Lorne Street North  
 OFFICE- 21 Lansdowne St.N. 864-0747  
 Sunday/dimanche 9:30 a.m. English 11:00 a.m. Français  
 Weekdays Mon-Sat en semaine Lun-Sam  
**Fr. Jacques Fortin**

### ST. JEAN DE BRÉBEUF (Sultan)

Liturgy of the Word  
 Liturgie de la parole Every 3rd Saturday 7 p.m. Bilingual  
 Tous les 3e samedis 19h Bilingue  
 Permanent Deacon Ted Castilloux

### Diocese of Moosonee Anglican Church of Canada

**ST. JOHN'S CHURCH**  
 4 Pine Street West 864-1604  
 Sunday Service 10:30 a.m.  
 Rev. Bruce Roberts

### ST. MARY'S ANGLICAN CATHOLIC CHURCH

78 Devonshire Street 864-0909  
 Sunday Service 10 a.m.  
 Rev. William P. Ivey

### CHAPLEAU PENTECOSTAL CHURCH

9 Elm Street (P.A.O.C.) 864-0828  
 Sunday School 9:45 a.m.  
 Sunday Services 11 a.m. & 7 p.m.  
 Family Night (ages 1-109) Wednesday 7 - 8:15 p.m.  
 Pastor Dan Lee

### TRINITY UNITED CHURCH

Corner of Beech and Lorne - 864-1221  
 Sunday Service and Sunday School 11:00 a.m.  
 Anna Chikoski  
 Soup Kettle every 2nd Wednesday of the month

### OUR LADY OF SEVEN SORROWS PARISH PAROISSE NOTRE-DAME-DES-SEPT-DOULEURS (Foleyet)

Liturgy of the World Sundays 11 a.m.  
 Liturgie de la Parole Dimanche 11h  
 Mass every 2nd & 4th Sunday at 4:00 p.m.  
 Messe sux 2e et 4e dimanche à 16h

### COMMUNITY BIBLE CHAPEL

Corner of King and Maple 864-0470  
 Communion Service 9:30  
 Family Bible Hour 11 a.m. Including Sunday School  
 Evening Bible Study and Ladies Bible Study during the week  
 Transportation available  
 Al Tremblay

# Snowmobile tourism gets boost

*Brown Supports Tourism Economy with \$3 Million Investment*

QUEEN'S PARK — On behalf of Peter Fonseca, Ontario's Minister of Tourism, Mike Brown, MPP, Algoma-Manitoulin, announced \$3 million of funding to the

Ontario Federation of Snowmobile Clubs. Brown has promoted snowmobiling as a recreational and tourism pursuit throughout Algoma-Manitoulin

by hosting his SNO (Snowmobiling in Northern Ontario) Tour for seven years. "I invite all Members of Provincial Parliament to accompany me on my

snowmobile tour to familiarize themselves with the recreational opportunities and the great beauty in the North," said Brown.

Snowmobiling contributes \$1.2 billion annually to Ontario's economy, and brings jobs and economic benefits to communities.

"Thanks to the support of the Ontario government, we can step up our campaign to draw more people to Ontario's peerless network of snowmobile trails as well as provide safe, well-maintained trails for all to enjoy," said the Ontario Federation of Snowmobile Clubs' executive director Paul Shaughnessy.

# Afghanistan Afforestation Generates Interest

Mattawa, ON - On Monday, March 31st, 2008 Canadian Institute of Forestry (CIF/IFC) member Captain Neil Stocker R.P.F. and the Institute's Executive Director John Pineau met with the Afghanistan Ambassador to Canada, His Excellency Mr. Omar Samad, to discuss the development and implementation of an Afghanistan Afforestation program. Captain Stocker first presented the idea for this initiative in an article that appeared in the September-October issue of *The Forestry Chronicle*, the professional journal of the CIF/IFC. Afforestation is the process of replanting trees in areas that have experienced long-term

deforestation; as opposed to reforestation which is generally undertaken immediately following a sustainable harvest. During the meeting, the Ambassador expressed strong support and enthusiasm, and encouraged the Institute to work with the Canadian International Development Agency (CIDA) and other appropriate organizations to move the project forward.

"I would like to see afforestation in Afghanistan begin as soon as possible," said Mr. Samad. "Forestry can be a very important tool that will help to bring about positive change, including fighting poverty,"

**Cont'd on P.10**

# Our Lady of Fatima students "Rock Out"



On Saturday April 5th, 2008, students from Our Lady of Fatima participated in a ROCKATHON. It wasn't your typical rockathon with music and instruments, this one included rocking chairs and a lot of enthusiasm. We had 13 eager participants who rocked from 8:00 A.M. to 8:00 P.M. Breakfast, lunch and supper were provided along with yummy dessert. A special

thanks to all staff/parents/former students who helped during the fun filled day and to all those who helped sponsor these spirited students.

We raised over \$2000.00 All proceeds will go toward the Quebec Educational Trip. WAY TO GO !!

**You can always count on our ADVERTISING to bring results.**  
**The Chapleau Express**  
 chaexpress@sympatico.ca  
**864-2579**

Dr. James Shearer  
 Dentistry Professional Corporation

**Receptionist/Bookkeeper**  
 Maternity Leave Position

**Requirements:**

- Prior office experience
- Bookkeeping experience
- Computer and Organizational skills
- Written and Oral communication skills

**Assets:**

- Bilingual - French/English

**Closing Date May 2, 2008**

**Mail Resume to:**  
 Box 726  
 Chapleau, On.  
 P0M 1K0

Roger Carriere of  
**Monuments Carriere**  
 (formerly R&F Monuments)

is inviting all Chapleau residents in need of Monuments, Accessories, Engravings or Repairs to contact him.

Roger continues to offer outstanding service to the Chapleau area.

Chapleau residents are also invited to visit him at his Sudbury location.

Roger will be in Chapleau April 25, 26 and 27th. Please call toll free 1.877.525.7705 between 9:00 a.m. and 4:00 p.m. to set up an appointment.

For best results, send your articles and photos electronically to chaexpress@sympatico.ca



*Brent St. Denis*  
 MP / Député d'  
**Algoma-Manitoulin-Kapuskasing**

**CITIZEN OUTREACH**  
**CONSULTATIONS AVEC LES CITOYENS**

<p><b>The afternoon of Thursday, April 24th</b></p> <p><b>CHAPLEAU</b></p> <p>If you wish to meet with Brent privately, if you have any questions or concerns, or if you want to have a chat, please call:</p>	<p><b>L'après-midi du jeudi 24 avril</b></p> <p><b>CHAPLEAU</b></p> <p>Si vous souhaitez rencontrer en privé, si vous avez des préoccupations ou des questions, ou si vous voulez tout simplement lui dire un mot, veuillez passer un coup de fil au:</p>
--	---

**Toll-Free / Sans Frais:**  
**1-800-920-2057**  
 www.brentstdenis.parl.gc.ca / stdenb@parl.gc.ca

# Snowmobilers celebrate a great winter



the Christmas holidays, providing a real boon for winter tourism operators in rural and northern areas that benefit most from its annual \$1.2 billion economic impact.

Then the snowmobiling season extended through Spring Break and the Easter Weekend, while OFSC trails continued to remain open for good spring riding through the end of March in many areas. Even today, some snowmobile trails in Northern Ontario remain available for limited spring riding.

"Thanks to great snow conditions, thousands of people got to go snow-mobiling for the first time or to discover it again, said

Go Snowmobiling Campaign Coordinator John Blaicher. "Overall, permit sales were up by about 2%, while actual participation increased as more snowmobilers rode more often, with more family and friends, to more places, and covered greater distances."

The OFSC estimates that snowmobilers rode over 150 million kilometres on its 41,000 of snowmobile trails. Another sure sign of a good winter is that many OFSC clubs groomed their trails for 12 weeks or more. Meanwhile, sled sales have reportedly increased by double

digit percentages in some regions, while many snowmobile dealers also sold out of parts, accessories and clothing.

All of this reaffirms a strong future for snowmobiling in Ontario, especially considering the results of a recent study conducted by the International Snowmobile Manufacturers Association. It concluded that: "On a 10-point scale, non-snowmobilers across

North America rated their desire to go snowmobiling as high as an 8 or 9." This season, non-snowmobilers got their wish thanks to Go Snowmobiling and to Old Man winter, and many more are expected to try it for the first time as Go Snowmobiling ramps up for winter 2009. The OFSC wishes to thank its almost 7,000 club volunteers and more than 15,000 landowners for their

part in making the winter of 2008 an outstanding success.

The Ontario Federation of Snowmobile Clubs is dedicated to providing strong leadership and support to member clubs and volunteers, to establishing and maintaining quality snowmobile trails which are used in a safe and environmentally responsible manner, and to furthering the enjoyment of organized snowmobiling.

(Barrie, ON. April 8, 2008) – What a great snowmobiling season! Along with the successful launch of its new Go Snowmobiling Campaign, the Ontario Federation of Snowmobile Clubs (OFSC) celebrated a good, old-fashioned Canadian winter across most of Ontario. The first of what proved to be a record snowfall season in many areas came in November. Many OFSC trails opened for



## Sudbury & District Health Unit lifts Foleyet boil water advisory

The Sudbury & District Health Unit has officially lifted the boil water advisory issued November 12, 2007, for all residents of Foleyet who draw their water from the town's water system.

The health unit issued the

advisory due to uncertainty that the water treatment plant was being operated in a manner that would provide safe potable water.

The Ontario Ministry of the Environment has now confirmed that the plant is operating in

compliance with current drinking water regulations.

"The bacteriological quality of the water supply has since been tested with no adverse results being reported," said Nathalie Barsalou, a public health inspector with the

Sudbury & District Health Unit.

For more information, please call Nathalie Barsalou, public health inspector, Chapleau branch office of the Sudbury & District Health Unit at (705) 864-1610.

**Early detection of cancer only takes a few minutes ...**

**But it could add years to your life.**

If you are a woman 50 years of age or over, book your mammogram at the Ontario Breast Screening Program.

Call **1-800-661-8897**.

For any woman who has ever had sex, a PAP test can prevent most cancers of the cervix. Call your health care provider or public health unit.

**Do it for yourself.  
Do it for the ones you love.**



**Un test de dépistage du cancer ne prend que quelques minutes ...  
mais pourrait ajouter des années à votre vie!**

Les femmes de 50 ans et plus peuvent obtenir un test de dépistage du cancer du sein auprès du Programme ontarien de dépistage du cancer du sein.

Composez le **1-800-661-8897**.

Un test PAP peut prévenir la plupart des cancers du col de l'utérus chez les femmes qui ont eu des rapports sexuels. Appelez votre médecin ou votre service de santé publique local.

**Faites-le pour vous-même!  
Faites-le pour ceux que vous aimez!**



### Whodunit?

They've done it again!!

Who are 'they' and what have they done???

"They" are students attending Our Lady of Fatima, École Sacré-Coeur and Chapleau Public School who are in various grades ranging from two to eight.

They are the "who" and the "what" are the very creative and thoughtful posters that you will see displayed throughout the town.

These are reminders that April is Cancer Month and that the annual residential canvass is in full swing.

Now that these young people have made their important contribution; the Canadian Cancer Society is asking the older generation to be as generous as possible when the canvasser knocks on your door.

We are most grateful for any amount, large or small.

The final results of the campaign will be made available at a later date. If you weren't approached during the month and you wish to donate, contact Kathryn Crichton at 864-0771. or see us at the Trade Show April 25th and 26th at the Northern Credit Union booth.

**You can always count on the Chapleau Express**

### Job Opportunity Welder-Mechanic

Superior Machine & Hydraulics Inc. in Chapleau requires a full time welder/industrial mechanic. This position is suited for a highly motivated, self disciplined individual who desires to work as part of a team. A knowledge of SMAW and GTAW welding is a necessity. Millwright license an asset but is not required. Experience with computerized plasma cutting an asset. Dayshift hours with occasional overtime offered. We offer a competitive wage package commensurate with experience. Contact us at 705 864 1906 or mail resume to 5 Parliament Blvd. Chapleau ON P0M 1K0 or email to rfrazier@bellnet.ca

# PATRICK GROULX Nouveau spectacle!

## Un stand-up rythmé pour « tripper au boutte »!



Patrick Groulx est tout un phénomène! Son premier « one man show », en 2003, l'a littéralement propulsé à l'avant de la scène, le consacrant humoriste incontournable. Son œuvre audacieuse et rafraîchissante lui a permis de rafler l'Olivier de la Découverte et par la suite, celui de la Performance scénique en 2004. Il s'est également lancé dans l'aventure du Groulx Luxe sur les ondes de Musique Plus et a su ainsi gagner

définitivement la faveur du public. L'année dernière, il a même remporté le trophée KARV « beaucoup, passionnément, à la folie » : la vedette de la télé que vous aimez le plus, lors de l'anti-gala à VRAC.

Alors, pour son grand retour sur les planches en Ontario, l'humoriste ottavien a tout simplement décidé d'aller chercher son public! Finie la structure de sketches à personnages qui nous a tant fait rire, Patrick

Groulx a gagné en assurance et s'éclate maintenant avec ses propres blagues! Comme le dit si bien Le Droit; « Avec sa tête d'éternel surpris, il flirte allégrement avec l'humour absurde et partage ses fines observations du quotidien ». Quatre ans et 300 représentations de son « one man show » éponyme plus tard, il se lance dans le stand-up et en profite pour plaisanter largement sur notre besoin insatiable d'être aimé et pour tourner en ridicule tous nos petits plaisirs coupables... Hilarité garantie!

Le Centre culturel Louis-Hémon présentera le nouveau spectacle de Patrick Groulx le vendredi 25 avril au cafétorium de l'École secondaire catholique Trillium à 20 heures. Le spectacle est pour le grand public. Si vous voulez emmener votre enfant c'est à votre discrétion. Pour sa part le Centre les enfants s'ils sont accompagnés d'un adulte et ce jusqu'à l'âge de 15 ans. À noter que la troupe Improtêine fera la première partie du spectacle de Patrick Groulx!

Les billets sont disponibles au Centre culturel au coût de 25\$ et de 20\$ pour les

membres, étudiant 5\$ (j'VAIS) et 8\$ à la porte le billet enfant 5\$ accompagné d'un adulte. Vous pouvez réserver votre billet au Centre 864-1126 ou en ligne au [www.francochapleau.ca](http://www.francochapleau.ca) au comptoir de réservation.

Et c'est ainsi que se termine notre programmation artistique 2007-2008.

Le Centre culturel Louis-Hémon tient à remercier tous ses partenaires : Réseau Ontario, Conseil des Arts de l'Ontario, Patrimoine canadien (PAC), Chapleau Performing Arts, École secondaire catholique Trillium, ses partenaires médiatiques : la Télévision de Radio-Canada Ontario-Outaouais, la

Première Chaîne de Radio-Canada, TFO, MICRO, CHYC-FM et Chapleau Express.

Et un merci très spécial à tous ceux et celles qui ont assisté à nos spectacles. Votre loyauté envers le Centre est remarquable et nous encourage à continuer de vous offrir des spectacles de qualités.



## IMPORTANT LEGION MEETING THURSDAY MAY 8TH 7:00 P.M.

Nominations and Elections  
For new Legion Executive  
All voting members are encouraged to  
**Attend!!!!**



### Hallcom Crew

## Transport

is looking for drivers for  
Chapleau and surrounding  
area.

Please contact:  
Supervisor Gerry  
at 864-1983  
for an interview  
Between 9:00 a.m.  
and 5:00 p.m.

“We Want To Be **YOUR** New Car Dealer”



**Linda Stewart**  
Sales Manager



**Marty Stewart**  
Sales Representative



**Matt Stewart**  
Sales Representative



**Dan Champagne**  
Sales Representative



**Larry Dubeau**  
Sales Representative



**2008 SORENTO**  
lease  
**\$339** / mo.  
48 mos. \$3,595 down  
**0.9%** FINANCE RATE  
\$2,000 CASH REBATE  
\$20,495

1-800-661-6907



## Kia of Timmins

1285 Riverside Drive • 267-8291

NO CREDIT?  
NO PROBLEM!

kiaoftimmins.net  
Visit [kia.ca](http://kia.ca)

## Jour de la Terre reconnu par la boutique "ENTRE AMIS"

Le 22 avril nous invite à poser un geste de respect de la terre. En 1971, les États-Unis ont lancé le jour de la terre pour célébrer la naissance du mouvement environnemental. On peut se renseigner sur le mouvement et ses objectifs en consultant le site web [www.jourdelaterre.org](http://www.jourdelaterre.org).

Ce mardi après-midi, le 22 avril, entre 13 h 30 et 16 h 00, apportez votre recyclage à la boutique "Entre Amis" à Cedar Grove (nous acceptons cannettes de boisson gazeuse, cuivre, aluminium, acier inoxydable, fer, ainsi que les bouteilles

consignées de la LCBO et du Beer Store ou vos objets usagés en bonne condition. En échange, nous vous offrirons un café ou un thé équitable avec un délicieux dessert gratuit. Merci du soin que vous portez à la forêt et à la communauté de Chapleau.

## Earth Day recognized by the "BETWEEN FRIENDS" store

First launched as an environmental awareness event in the United States in 1971, Earth Day (April 22) is celebrated as the birth of the environmental movement. More information regarding Earth Day is available at [www.earthday.ca](http://www.earthday.ca).

This Tuesday

afternoon, April 22, between 1:30 and 4:00 p.m. at the "Between Friends" coffee/thrift shop located at Cedar Grove bring in your recyclables (we collect all metal, i.e., pop cans, copper, aluminium, stainless steel, iron, as well LCBO and Beer Store

returnable bottles) or your donation of used items in good condition. In return, we will offer you a free cup of fair trade coffee or tea with a delicious dessert. Thank you for looking after our forests, our rivers and the community of Chapleau.

### Huron-Superior Catholic District School Board



Ms. Pino gets her class involved in animated story telling.



Send Your Child to a Truly Special School!

### KINDERGARTEN REGISTRATION

OUR LADY OF FATIMA CATHOLIC SCHOOL

OUR SCHOOL WILL TEACH YOUR CHILD THE ABC'S AND **MUCH MORE** IN A FAITH BASED ENVIRONMENT THAT WILL DEVELOP THE FULL POTENTIAL OF YOUR CHILD.

### Our school is special because:

- We revere the dignity of your child
- Affirm the sacredness of all life
- Create sacred learning environments

Give your child the power to transform the world

Join our family by enrolling your child in Kindergarten at Our Lady of Fatima Catholic School Call 864-1081

Come Soar With The Falcons!



## Youth benefit from on the job training

*Brown: Government Funds Northern Co-op and Internship Program*

QUEEN'S PARK - Further investments by the Ontario government are helping Algoma-Manitoulin youth develop their on-the-job skills or pursue career development opportunities at home. "This is a wonderful opportunity for students to learn and gain valuable work experience," said Algoma-Manitoulin MPP, Mike Brown.

As part of a \$6.6-million investment announced by the province today, 18 young residents will gain substantial job experience through the Youth Co-op and Internship Program of the Northern Ontario Heritage Fund Corporation (NOHFC). Employers in the area are receiving a total of \$475,651 to hire the students.

"Job training and skills development lead to rewarding and successful careers," said Northern Development and Mines Minister and NOHFC Chair Michael Gravelle. "Our program is helping hundreds of young northerners develop these skills right here in Northern Ontario." **QUICK FACTS** Private sector and public sector employers located in Northern Ontario involved in the

following areas: health care, social services, value-added manufacturing, emerging technologies, environmental sciences, and other activities that result in an economic or social development advantage for Northern Ontario are eligible for funding.

Employers receive a conditional contribution of up to 50 per cent of a wage subsidy to a maximum of \$6.00 per hour to hire post-secondary students from Northern Ontario for co-op work placements,

They are eligible for up to 50 per cent of a recent Northern Ontario graduate's salary for private sector internships, or up to 90 per cent for public sector internships, to a maximum of \$27,500 annually.

### Happy Birthday



Janice is turning 50 and she is "Staying Alive Staying Alive AH AH AH AH Staying Alive"

John Stadnyk  
Director of Education

[www.hscdsb.on.ca](http://www.hscdsb.on.ca)

Marchy Bruni  
Chairperson

# Health Unit releases community health status report

Created using the most reliable and current data sources available, the Sudbury & District Health Unit today released a comprehensive report that provides information about the health status of people living in its service area. The report includes statistics on topics such as life expectancy; mortality rates; leading causes of illness, death, and injury; reportable diseases; and physical

activity rates.

“Ongoing monitoring and reporting on the health status of the community is an important role for public health,” said Isabelle Michel, Director of the health unit's Resources, Research, Evaluation, and Development division. “This report is a valuable source of information for public health practitioners and like-minded partner agencies as it illustrates

the current health status of the populations we serve.”

The report includes comparisons between the Sudbury & District Health Unit's service area and Ontario, and across socio-demographic characteristics such as sex, age, and income, which are determinants of health.

Some of the results from the report include:

-Physical activity rates steadily increased over

the years (from 22 per cent in 1997 to 32 per cent in 2005). Current rates are statistically higher than the province.

-In 2005, an estimated 24 per cent of people aged 12 and over were current smokers, and 23 per cent of people who drank alcohol reported being heavy drinkers. These findings represent a significant decrease from 2001. For these two behaviours, there are currently no

differences between local and provincial rates.

-In comparison to provincial rates, people in the health unit's area have higher rates of cardiovascular disease, diabetes, and some cancers. These findings are consistent across northeastern Ontario.

-Over the last decade, rates of chlamydia infections have steadily increased across the country. In 2007, 475 people in the health unit's service area were diagnosed with chlamydia. Local rates of this preventable and treatable sexually transmitted infection are higher than provincial rates.

-People in the area die two to three years sooner than the average Ontarian.

-Fifty-eight per cent of people living in the area rate their health as excellent or very good. These findings are similar to the Ontario average.


“So many factors interact with one another to determine the health status of our communities such as poverty, education and income levels, working conditions, and a myriad of personal, social, biological and environmental

factors,” said Vera Etches, Acting Medical Officer of Health. “Some of the findings in the report offer encouragement; however, at the same time, other findings highlight the need for ongoing collaboration between community agencies to improve the health of people living or working within the communities that we serve.”


The health unit serves communities spanning from Chapleau in the north to French River in the south and from Meldrum Bay in the west to Warren in the east. The results in the Health Status Report represent all of these communities.

Health unit staff prepared the comprehensive report using data from several sources such as the Canadian Community Health Survey, the Rapid Risk Factor Surveillance System, the Provincial Health Planning Database, and the integrated Public Health Information System.

To read the complete report online, visit [www.sdhu.com](http://www.sdhu.com), or call the Sudbury & District Health Unit at (705) 522-9200 for a copy.




## Algonia District School Board



National  
Volunteer  
Week

April 27th to May 3rd, 2008



Thank you  
volunteers for  
ALL you do!

**Our students** learn compassion and social responsibility within their schools and they witness it through the actions of dedicated volunteers who so tirelessly give of their time and talents. Thank you to all volunteers, who, through their example, encourage students to reach their potential in all aspects of life.

Reaching to the Future

[www.adsb.on.ca](http://www.adsb.on.ca)

Mario Turco, *Director of Education*  
Wanda McQueen, *Chairperson*



Effective May 1, 2008

Don's Barber Shop  
and  
Marcel's Barber Shop

Price Increase

Adults - \$14.00

Seniors - \$12.00

Children - \$12.00

A partir du 1 mai, 2008

Don's Barber Shop  
et  
Marcel's Barber Shop

Augmentation de prix

adultes - \$14.00

âge d'or - \$12.00

enfants - \$12.00



# New grants help student commuters



Starting this fall, the province will pick up part of the travel costs for students who commute long distances to get to college or university.

Until now, a lot of students living in rural or northern communities had to pay the full cost of getting to school on their own. This put a college or

university education out of reach for some. Now, more students will get the opportunity to continue their education past high school.

Eligible students who go away to school will get a \$300 annual grant to help them return home for visits with family. Students who live at home and commute regularly back and forth will get \$500 each semester.

To be eligible for these grants, a

student must live in a rural or northern community more than 80 kilometres away from a college or university.

About 24,000 students will benefit from the \$27-million program over three years. Students will be able to apply for the grant online starting this year.

This is part of the \$1.5-billion Skills to Jobs Action Plan announced in the government's 2008

Budget.

"More access to higher education means more opportunities for students down the road. We want to be there for students, so that they can be there for school," said Premier Dalton McGuinty.

"Today's students will build tomorrow's knowledge economy, so we want to do everything we can to make sure students get the support they need to succeed," said Minister

of Training, Colleges and Universities John Milloy.

About 120,000 students in Ontario get grants from the government. Seven out of every 10 new jobs created in Ontario over the next decade will require postsecondary education or training. Ontario has the highest proportion of university educated people aged 25 to 64 among G8 countries.



## JOB POSTING

**LABOURER - \$20.99 per hour**  
20 hours per week

Interested individuals may make application to fill the above position. The position is located at the Chapleau Civic Centre, 20 Pine St. W. The position is responsible for all janitorial work related to this facility and may include snow shoveling, grass cutting and other general maintenance. Work is performed after regular office and library hours.

**Qualifications:** Minimum grade 12 education. Proof of current "D" driver's license or agreement to obtain same within specified time. Proven janitorial experience. References may be required.

Resumes will be received by the undersigned until Wednesday, April 23rd, 2008 at 4:00 pm.

## OFFRE D'EMPLOI

**OUVRIER - \$20.99 l'heure**  
20 heures par semaine

Les intéressés sont invités à soumettre leur candidature au poste susmentionné. Le lieu d'emploi est l'hôtel de ville de Chapleau situé au 20, rue Pine ouest. Il s'agit d'un poste de conciergerie pouvant inclure le déneigement, la tonte de la pelouse en plus des tâches d'entretien régulières. Le travail doit s'effectuer après les heures ouvrables du bureau et de la bibliothèque.

Compétences exigées: Minimum 12e année. Preuve d'un permis de conduire catégorie "D" ou promesse de l'obtenir dans un délai spécifique. Expérience en conciergerie. Des références pourraient être demandées.

Les demandes accompagnées de c.v. seront acceptées par le soussigné jusqu'au mercredi 23 avril 2008 à 16h.

Allan Pellow, CAO/AMCT  
Administrateur/greffier,  
C. P./P.O. Box 129, Chapleau, ON.  
864-1330.  
apellow@township.chapleau.on.ca

Dated this 19th day of April, 2008.  
Daté ce 19e jour d'avril 2008.



## Algoma District School Board

*Thank You!*

## ADMINISTRATIVE Professional's Day

**Wednesday, April 23**

We take time to recognize all our Administrative Professionals for the valuable services they provide and the important role they play in supporting our system goals. Thank you to these dedicated individuals who help to establish a caring, respectful and nurturing environment that supports student learning.

*We appreciate all you do!*

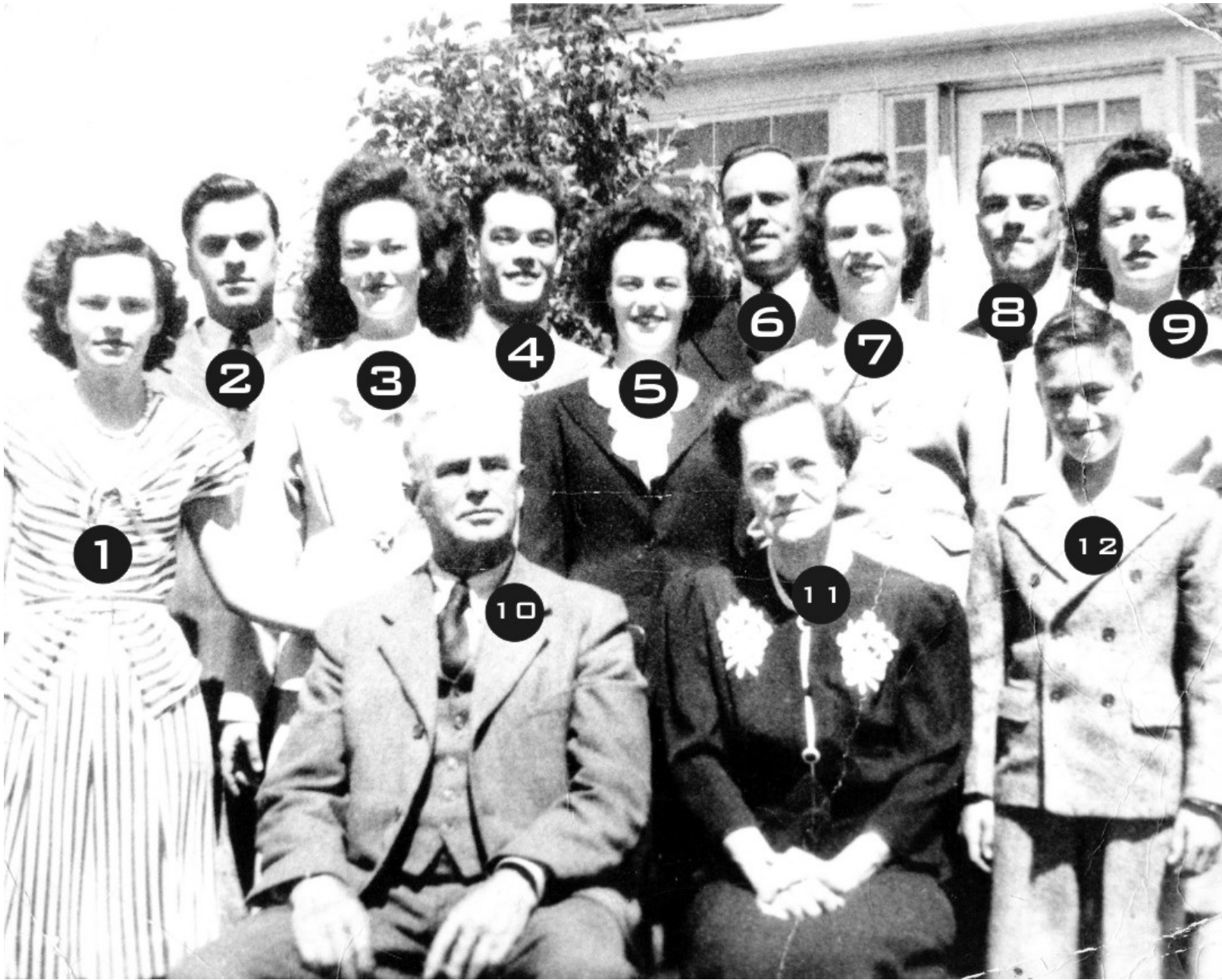
**Reaching to the Future**  
www.adsb.on.ca

Mario Turco, *Director of Education*  
Wanda McQueen, *Chairperson*



# Our Chapleau Families

## *Emile Fortin Family*



1- Marie (Musclow), 2- Emile Jr. (Buzz), 3- Laurette (Fairbrother), 4- Raoul, 5- Marguerite (Levesque), 6-Octave, 7-Colombe (Champion), 8-Johnny, 9-Veronique (Somerleigh), 10- Mr. Emile Fortin, 11- Mrs. Alberta Fortin, 12- Bobby

married and raised ten children.

When the depression came, Mr. Fortin was laid off from the railroad for five years. During that time, in order to support his family, he bought and operated a small lumber mill in Mobert, Ontario. Also, during the winter months, he cut and sold firewood for heating to the people of Chapleau, various businesses, and the local churches. He also did some small construction work during the summer months.

After the depression, he was called back to work at CPRail where he finished his career as a trainman until he was pensioned at age 65.

**Feature your family in the Chapleau Express. For those interested in sending us a short history of your Chapleau family along with photos which will be scanned and returned please feel free to contact us.**

Submitted by "Bobby" Fortin  
Emile Fortin arrived in Chapleau in

1908 from Fall River, Mass., where he was employed in the textile industry. His brother,

who had arrived in Chapleau first, encouraged him to come to the com-

munity to hire on with CPRail as a trainman. After a short period of time, he met

Alberta Lemieux, who was born in Carder, but was now residing in Chapleau. They



Emile Fortin Sr. and Bobby ready for Sunday Mass

### NOTICE OF ANNUAL MEETING SERVICES DE SANTÉ DE CHAPLEAU HEALTH SERVICES



### AVIS D'ASSEMBLÉE ANNUELLE SERVICES DE SANTÉ DE CHAPLEAU HEALTH SERVICES

The 14th Annual General Meeting of Services de santé de Chapleau Health Services will be held on Wednesday, June 18, 2008 at 7:30 p.m. at the Hospital. Members of the public are welcome.

La 14e assemblée générale annuelle des Services de santé de Chapleau Health Services aura lieu le mercredi 18 juin 2008, à 19 h 30, à l'hôpital. Les membres du grand public sont invités à y assister.

Part IV - Board - Section 10 - Nominations for election of Directors subject to section 11 (Board Composition) and all other provisions of this By-law, nominations for election as Director at the annual meeting of the Corporation may be made only by:

Partie IV Conseil d'administration Article 10 Mises en candidature pour l'élection d'administrateurs conformément à l'article 11 (composition du Conseil d'administration) et à toutes les autres dispositions de ce règlement, les mises en candidatures pour l'élection d'administrateurs lors de l'assemblée annuelle de la Société peuvent seulement être faites par:

- a) the Nominating and By-laws Committee of the Board; or
- b) members of the Corporation provided that each nomination by members:
  - i) is in writing and signed by at least two (2) members in good standing;
  - ii) is accompanied by a written declaration signed by the nominee that he or she will serve as a Director in accordance with the By-law if elected; and,
  - iii) is submitted to and received by the Secretary at least fourteen (14) days before the date of the annual meeting.

- a) le Comité des candidatures et des règlements du Conseil d'administration; ou
- b) les membres de la Société à condition que chaque mise en candidature par les membres:
  - i) soit faite par écrit et signée par au moins deux (2) membres en règle;
  - ii) soit accompagnée d'une déclaration écrite signée par le candidat ou la candidate qu'il ou elle agira à titre d'administrateur ou d'administratrice conformément au règlement s'il ou si elle est élu; et,
  - iii) soit remise à la secrétaire et reçue par celle-ci au moins quatorze (14) jours avant la date de l'assemblée annuelle.

# Afghanistan Afforestation Generates Interest

**Cont'd from P.3**  
 increasing employment, restoring ecosystems and improving water retention in the soil. I want to see such a program become a priority."

Following the meeting with the Ambassador, Captain Stocker and Mr. Pineau met with representatives from CIDA, the Department of National Defence and Natural Resources

Canada to discuss and obtain advice on a comprehensive Afghanistan afforestation proposal currently being developed by Captain Stocker. CIF/IFC President Fred Pinto was also able to participate by conference call.

"There is no doubt we are getting considerable interest in the project from many CIF/IFC members, several different non-

profit organizations and from various departments in both provincial and federal governments," said Captain Stocker. "Although we want to move quickly to implement, there are many considerations and details that need to be worked out to ensure that we achieve success. I am confident we will see this happen."

The Canadian Institute of Forestry is one of Canada's oldest and most respected forest conservation organizations. CIF/IFC members work in government, industry, and academia, and include foresters, technicians, biologists, ecologists, educators, economists and many individuals with an



We are currently seeking qualified candidates for the following position:

### SUMMER STUDENTS EMPLOYMENT OPPORTUNITIES

Services de santé de Chapleau Health Services is seeking 7 highly motivated students to fill the following full-time positions. The positions will be 37.5 hours per week from April to August 2008.

- 2 Registered Nurse Students**  
- assist Registered Nurse in all patient care activities within scope of practice i.e. emergency care, oncology and acute care.
- 2 Registered Practical Nurse Students**  
- assist Registered Practical Nurse in all patient care activities within scope of practice i.e. long-term care, acute and outpatient clinics.
- 2 Geriatric Therapeutic/Activation Assistants**  
- work in the Activation Department to provide therapeutic activities to long-term care residents.
- 1 Supported Independent Living Assistant**  
- assist the Supported Independent Living Worker in planning, developing, and implementing creative activities for developmentally disabled adults.

Interested applicants may submit résumés by April 24th, 2008 to:  
 Human Resources  
 Services de santé de Chapleau Health Services  
 6 Broomhead Road, P.O. Box 757  
 Chapleau, Ontario  
 P0M 1K0  
 Tel: (705) 864-3054  
 Email: chapleauhr@sschs.ca

We thank all applicants for their interest, but only those selected for an interview will be contacted. All applications received will be held strictly confidential. Cet avis est disponible en français.

Hospital Auxiliary Tea Penny Sale Winners	
1. Jam Basket	Betty O'Hearn
2. Gift Basket	Jan Ribout
3. Mugs	Tara St.Amand
4. Gift Basket	Pat Mizuguchi
5. Bride & Bridesmaid	Verna Serre
6. Bath Assortment	Georgia Morin
7. Blue Hat	Peggy McKnight
8. Kitchen Basket	Mark Mizuguchi
9. Bowl Set	Lorraine Lemieux
10. Bonnet	Frenda Broomhead
11. Duck Basket	Tari Bedard
12. Bar Set	Peggy McKnight
13. Green Tea Basket	Mark Mizuguchi
14. Kitchen Set	Shawn Gauthier
15. Phone	Cecile Plourde
16. Chair	Carmelle Card
17. Picnic Cooler	Susie Provost
18. Plate & Stand	Goldie Morris
19. Bathroom Set	Yvette Joyal
20. Eden's Angel	Rita Poulin
21. Iron Bike	Rita Poulin
22. Corning set	Jacynth Richard
23. Basket	Anna Bucciarelli
24. Bake + fill	Shirley Casson
25. Care Bear	Evangeline Barsalou
26. Doll	Kaylea Boucher
27. Black Bowl	Yvonne Boucher
28. Basket (Ent.)	Tori Bedard
29. Curling Iron	Paula Taylor
30. Candle Holder	Adyh Duffney
31. Coffee shop	Jan Ribout

interest and passion for our forests and the complex ecosystems that they support.

**CHAPLEAU MINOR HOCKEY ASSOCIATION**  
**ANNUAL GENERAL MEETING**  
 Tuesday May 13, 2008 at 7pm, Recreation Centre

Amendments to the Constitution Accepted in writing by April 30, 2008  
 Send to C.M.H.A., Box 1021, or President

Elections for All Executive Positions and Head Coaches for all divisions.

Coaches  
 Letters of application with 5 parent or executive signatures must be presented to President prior to the start of the meeting.

**Welcome to our booth at the Trade Show.**  
 Interior Home Designs  
 Louise Etter, consultant and  
 Ludie's Baskets & Crafts,  
 Victorian Epicure Selections,  
 Ludie O' Hearn, Consultant.

**Great Mother's Day gift ideas!**



**Northern Haul Contracting**  
[www.northernhaul.com](http://www.northernhaul.com)

**EMPLOYMENT OPPORTUNITY**  
 NHC has the following position available

**Secretary/Receptionist**  
 Experience an asset, Working with Quickbooks

Send resume to Tracey, via Fax, E-Mail or in Person  
 Office Hours: Monday to Friday: 8 am to 5 pm  
 Martel Road, P.O. Box 788 Office: (705) 864-1095  
 Chapleau, Ontario, P0M 1K0 Fax: (705) 864-1110



Le Centre culturel Louis-Hémon présente

# PATRICK GROULX

Et en première partie Improtéine

**LE VENDREDI 25 AVRIL 2008**

École secondaire Trillium (cafétorium)  
 à 20 heures

**Adulte 25\$ 20\$ (membre)**  
**Étudiant 8\$ (à la porte)**  
**Enfant 5\$ (accompagné d'un adulte)**

Info/Billet : 864-1126  
 Réservation : 864-1126 ou [www.francochapeau.ca](http://www.francochapeau.ca)





Algoma District School Board

## SUMMER STUDENT EMPLOYMENT

The Algoma District School Board is accepting applications for Summer Students Employment in Wawa, Chapleau and Hornepayne. Contact your local high school for details and application forms.

Mr. Matthew Morrison  
 North Area Coordinator  
 Algoma District School Board

**Mario Turco** **Wanda McQueen**  
 Director of Education Chair  
[www.adsb.on.ca](http://www.adsb.on.ca)

**THE LOCAL MARKET PLACE**

**CHADWIC HOME, FAMILY RESOURCE CENTRE**

Offers shelter, emotional support, and information for women and their children who are in crisis situations. We have a Toll Free Crisis Line which is staffed 24 hours a day. We can arrange for free transportation to the Centre for women who live in the Algoma/Chapleau area. We also offer support to women who live in the communities of Chapleau, White River, Dubreuilville, and Hornepayne through our Outreach Program. Our Outreach Worker travels to those communities to meet with women who need emotional support as well as information about their rights and options. If you need to speak with the Outreach Worker when she is in your community, you can call the Centre at any time to set up an appointment. You do not need to be a resident of the Centre in order to use our services. If you need someone to talk to or if you just need someone to listen, call our Toll Free Crisis line at 1-800-461-2242 or you can drop in at the Centre. We are here for you.

**ALCOHOLICS ANONYMOUS**  
Offers help to anyone who desires to stop drinking. Open discussion meetings: Wednesday 7:30 p.m. & Sunday 2:00 p.m. Trinity United Church basement. Telephone contacts: 864-2321 and 864-1827.

**ALCOOLQUES ANONYMES**  
Offre de l'aide à celui ou celle qui désire arrêter de boire. Les rencontres ont lieu tous les mercredis soirs à 19h (7:00 p.m.) Au sous-sol de l'église Sacré-Coeur. Téléphonnez au 864-2786.

**Société Alzheimer Society meetings** will be held at the Chapleau Hospital every 1st Monday of each month starting from 7:00 p.m. to 9:00 p.m.

**Narcotics Anonymous** offers help to anyone who desires to stop using drugs. Meeting every Thursday 7:00 p.m. basement Sacred Heart Church. Telephone contact 864-2786.

**APARTMENTS FOR RENT**

**You need a decent apartment** with 1, 2 or 3 bedrooms, fully or semi-furnished, or not, dryer and washer hookups, outdoor balcony, storage shed, private parking. Central location. Call Quality Rental at 864-9075 and leave message. Jun7

**1-2 and 3 bedroom apts.** and bachelor. For more information call 864-1148 or 864-4071 (cell) Sep27

**1 bedroom apartment** for rent. \$550.00 all included. Call Doug at 864-1032 for information. Cont.

**2 bedroom duplex**, close to downtown. \$450.00 plus hydro. Available June 1st. Call after 6 pm. 864-2084. Apr26

**Spotless 1 Bedroom apartment**. Private entrance and deck. Ideal for quiet responsible person. Includes laundry area. Move in with luggage and groceries. Call 864-2060.

**Large 1 bedroom apt.** centrally located, fridge and stove included, storage, parking & outdoor plug-in. Available May 1st. Call 864-0677 May3

**1 bdrm apt.** with fridge, stove and parking. Close to downtown and available immediately at \$395.00 per month. Call Con Schmidt. 864-0617 May3

**Pineland Country Cottages** are now renting modern clean cottages within town limits for the season. Please call 864-1396 after 6:00 p.m. cont

**SHOP LOCALLY  
WE ALL DEPEND  
ON IT**

**FOR SALE**

**1997 Ford Explorer.** New tires. Replacement body parts. Good running. Also Antique Piano. For information call 864-0977. Apr26

**New French door** with built in blinds, brick molding. 60"x80". Call 864-2617. Best offer.

**Have a good weekend!**

**SEEKING APARTMENT**

**"Shift Engineer Chapleau Sawmill seeks a Rental unit.** A non smoking Shift Engineer of the Chapleau Sawmill looking for a Room or Apartment to Rent I am currently living in Kingston (Ontario), but need a 2nd residence from June 1, 2008. If anyone has a quiet/furnished room or an apartment with a safe parking spot with block heating facilities, please feel free to contact me via e-mail mahasinga@msn.com or phone 613-389-5364 and ask for Singa. Thank you in advance."

**SERVICES**

**\$39.99 Telephone Service.** \$20.00 Unlimited Long Distance. Transfer current phone number free. \$39.99 New activations. Toll free 1-866-391-2700. A Neighbourhood Connection. Apr26

**Commercial, event, and wedding videos.** Shot, edited, and produced to DVD. Local, reliable, and professional. Call Alex 864-0386 Apr19

**WOOD STOVES**

**For Sale, New Blaze King Wood Stoves,** shipped direct to Chapleau. For the best prices on Blaze King wood stoves call Rick Geroux: 705-779-3304. ctd

**SHOP LOCALLY!  
WE ALL DEPEND ON IT!**

**Classified ads work**

**SLOMA CLEANERS**  
Drop off at **Between Friends (Cedar Grove)**  
**Mon.-Fri. 8:30 to 12:00 & 1:00 to 4:30**

**BERRY'S FREIGHT SERVICES**

TIMMINS - CHAPLEAU - TIMMINS  
**MONDAY TO FRIDAY**  
1lb. to 10,000 lbs.  
FOR QUALITY SERVICES AT INEXPENSIVE PRICES GIVE US A CALL AT **1-705-264-4334**

**ALL ADS ARE ACCEPTED AT THE CHAPLEAU INNOVATION CENTRE**  
DEADLINE FOR RECEIVING ADS IS **WEDNESDAY 4:00 p.m.**  
**CLASSIFIED ADVERTISING RATES**  
Regular Classified Ads  
First 25 words or less \$6.00  
Each additional word \$0.15+GST  
**No refunds on cancelled classified ads.**

**NEW AT THE CHAPLEAU PUBLIC LIBRARY**

**New Talking Books on MP3**  
Buddha - Deepak Chopra  
Endurance: Shackleton's incredible voyage - Alfred Lansing - The Marriage Game - Fern Michaels  
A Person of interest - Susan Choi  
The Woods - Harlan Coben  
We shall not sleep - Anne Perry  
At some disputed barricade - Anne Perry  
ATTENTION  
COME SEE US AT THE TRADE SHOW

**Commercial Building AVAILABLE for rent 1100 sq. feet Call Doug at 864-1032**

**Travis Gendron**  
Sales Manager  
61 Mission Road  
Wawa, Ontario, P0S 1K0  
Tel: 705-856-2394  
Cell: 705-856-5595  
Fax: 705-856-4290  
travisgendron@missionmotors.com

**MISSION MOTORS** of WAWA

NEW & PRE OWNED  
FINANCE SALES

Goodwrench  
SHOVID CAR CARE

VEHICLE ACCESSORIES  
316 TOWING

PONTIAC, CANADA, GMC, CHEVROLET

**LVP** LABERGE VENNE & PARTNERS  
PROFESSIONAL CORPORATION  
CHARTERED ACCOUNTANTS and CONSULTANTS  
COMPTABLES AGRÉÉS et CONSULTANTS

**Professional Services to Northern Ontario for 25 years**  
Financial Statements for Small Business & Corporations  
Tax Returns - Personal, Corporate and Trust/Estate  
Personal, Retirement, Estate Financial and Tax Planning Strategies  
Business Projections, Plans and Financial Proposals  
Computer Consulting  
ACCPAC and Quickbooks

**1970 Paris Street, Sudbury, Ontario P3E 3C8**  
(705) 523.0272 (800) 581.7510 www.lvppartners.ca

**BRUNEAU'S TAX PREP & EFILE**

**JOHN BRUNEAU**  
864-0404  
101 LANSDOWNE ST. S.

**INSTANT CASH REFUND - ELECTRONIC FILING**  
FAMILY AND SENIOR DISCOUNTS  
FREE PICKUP AND DELIVERY FOR SENIORS  
YEAR ROUND SERVICE

**ALLEMANO & FITZGERALD**  
Barristers and Solicitors

**MICHAEL G. ALLEMANO, B.A., L.L.B.**  
Certified by the Law Society as a Specialist in Real Estate Law

P.O. Box 10, 369 Queen St. E. Suite 103, Sault Ste. Marie, Ontario P6A 1Z4  
Phone (705) 942-0142 Fax (705) 942-7188

P.O. Box 1700, 55 Broadway Avenue, Wawa, Ontario P0S 1K0  
Phone (705) 856-4970 Fax (705) 856-2713

**BRUNEAU'S TAX PREP & EFILE**

**JOHN BRUNEAU**  
864-0404  
101 LANSDOWNE ST. S.

**REMBOURSEMENT INSTANTANÉ - RAPPORT D'IMPÔT ÉLECTRONIQUE - RABAIIS FAMILIAL ET POUR PERSONNES ÂGÉES - LIVRAISON GRATUITE POUR PERSONNES ÂGÉES - SERVICE À L'ANNÉE**

**Northern Lights Ford Sales**  
Andrew G. McKenzie  
11 Years of Service

**Highway 17, North P.O. Box 1033 Wawa ON. P0S 1K0**  
Bus: 705.856.2775  
Fax: 705.856.4862  
sales@northernlightsford.ca

**LVP** LABERGE VENNE & PARTNERS  
PROFESSIONAL CORPORATION  
CHARTERED ACCOUNTANTS and CONSULTANTS  
COMPTABLES AGRÉÉS et CONSULTANTS

**25 ans de service professionnels pour les entreprises du Nord de l'Ontario**  
États financiers pour petites et moyennes entreprises et corporations  
Rapports d'impôts personnel, de compagnie et de fiducie  
Planification financière et fiscale personnelle et de compagnie  
Projections financières, plans d'affaires et propositions de financement  
Consultation en informatique  
ACCPAC et Quickbooks

**1970 rue Paris, Sudbury, Ontario P3E 3C8**  
(705) 523.0272 (800) 581.7510 www.lvppartners.ca

**gen SIGNS**

**Computerized Lettering Decals Highway Signs Custom Signs Vehicle Graphics**

Hours  
**Monday - Tuesday 9:00 a.m. to 5:00 p.m.**  
**Friday - 9:00 a.m. to 2:00 p.m.**  
**864-1870**  
jnsigns@gmail.com

**BODYLINES BY CRACK LTD.**

- 5 Licensed Bodymen
- Insurance Claims
- Windshield Repairs and Replacement
- Radiator Repairs
- State of the Art Frame Machine

**ALL WORK GUARANTEED**  
PLEASE CALL 705-856-1406

**JUST IN**  
**Great new selection of**



**Watches**  
**starting at \$29.95**  
**Chapleau Village Shops**

# Rude awakening



When Mother Nature called and advised that it was time to come out of hibernation, this Chipmunk didn't realize that he would have to tunnel upwards of four feet to see the sunlight. A few handfuls of sunflower seeds was the reward for his determination.

**Upcoming HomeCard**  
**NO FEE EVENT Promotion**  
**At Collins Home Furniture**

**APRIL 19 - MAY 3**

**CUSTOMERS CAN CHOOSE EITHER**  
**DO NOT PAY FOR 6 MONTHS OR 12 EQUAL PAYMENTS**

**It's a great time of the year to**  
**upgrade your furniture**  
**and major appliances**

## PICK OF THE WEEK

**3 Pc. Leather**  
**Living Room Suite**  
**in Coffee colour**  
**\$1999.00**

**with 12 equal monthly**  
**payments of**  
**\$188.24**  
**or 6 months**  
**DO NOT PAY**

**5 Pc.**  
**Dinette Set**  
**in a Burnished Oak**  
**Finish, includes**  
**rectangular table with 4**  
**upholstered side chairs**  
**\$899.99**

**with 12 equal monthly**  
**payments of**  
**\$84.75**



**COLLINS HOME HARDWARE**  
**864-1030**

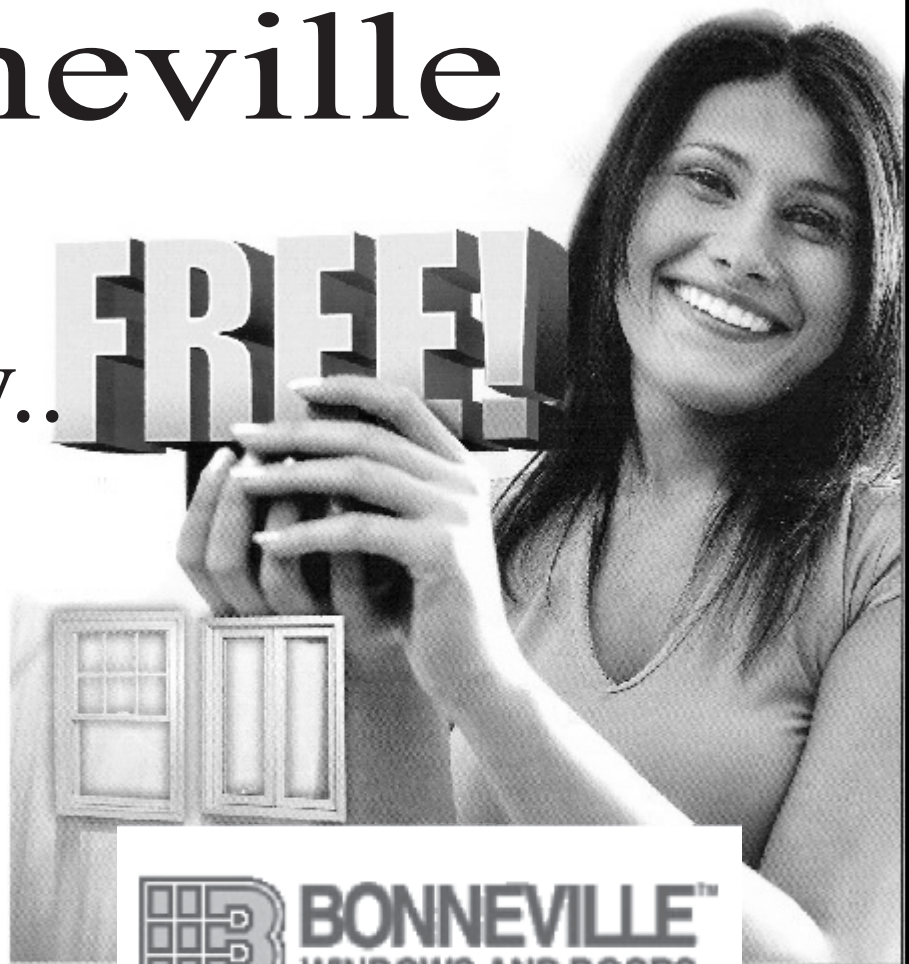


# From Now until April 30th

# On all Bonneville

PVC windows, get  
the LOW-E glass  
with argon absolutely..

# FREE!



**50% OFF**  
**SUGGESTED RETAIL**  
**PRICE**



51 Birch St. East



29 Birch St. East



**COLLINS HOME HARDWARE**  
**864-1030**